



Return to In-Person Instruction

WCPSS Board of Education

December 14, 2020



ABC Science Collaborative


Dr. Danny Benjamin



ABC Science Collaborative: COVID-19 and Schools

Uniting science and schools for a data-driven solution
to decision making and implementation





The information presented here is the most up-to-date, data-driven and evidence-based science to help school districts make important decisions regarding face-to-face instruction. Duke University and its partners will not make decisions nor will they advise specific action. Please refer to DHHS and Health Department guidance.



StrongSchoolsNC
Public Health Toolkit (K-12)

New CDC Guidance: Two Updates

1) School opening/closing

- “Schools should be the last to close... and the first to re-open when they can do so safely.”
 - Guidance document across a range of society (not limited to K-12 schools) including other educational settings, business, home life, social activities, restaurants, and more
- Statement includes important clause “can do so safely”
 - Mitigation strategies, preliminary data
- Distancing plus lack of masking (key around breakfast, lunch, and water breaks)
- Testing—especially helpful in college dorm settings, not clear if helpful in K-12 schools and not a condition of in-person instruction

2) Quarantine

CDC recently moved from 14 days to an option of

- 14 days or
- 7 days with a negative test
- Reminder for health care settings
- Importance of NC DHHS

Update from ABC

- Plan A: 5 districts reported interim data
 - Data should be interpreted with caution
 - No difference in A vs B with respect to within-school transmission
- Recent CDC guidance
 - WCPSS data reassuring thus far
 - CDC guidance does not advocate for Plan A or B in the NC system
 - WCPSS and following the recent CDC article
 - WCPSS certainly masking, contact tracing
 - Some items are for other aspects of society (e.g., testing)
 - Distancing especially important if not masked
 - Two reasons to close
 - The virus (within school transmission or clusters), OR
 - Staffing
 - Quarantine and implications
 - We will revisit quarantine with CDC
 - In the meantime, close collaboration with NC DHHS is warranted on options

Questions?

WHAT   
STARTS
 HERE
CHANGES
 EVERYTHING.



First Semester Update

Proposed Revised Changes

Cathy Moore, Superintendent

Exploring Implications

Three Considerations Driving Decisions

1

New and/or additional information or Executive Orders from the Governor

2

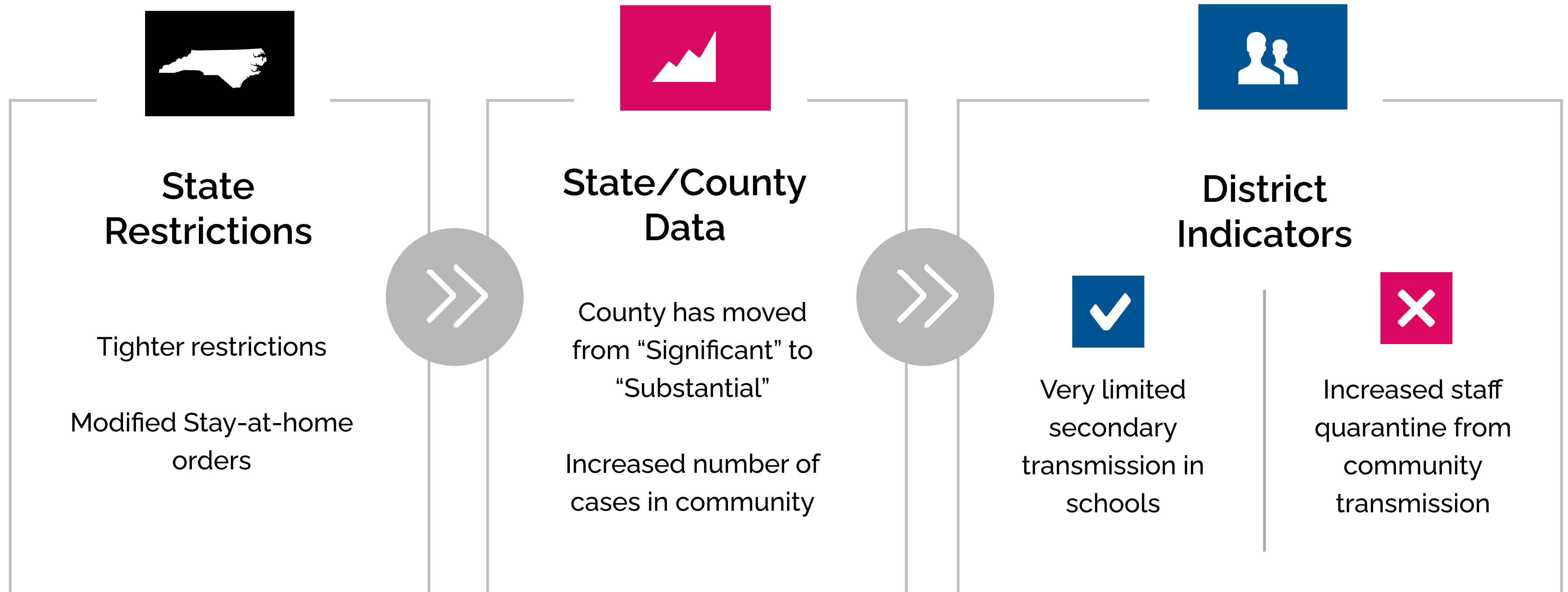
Collaboration with and learnings from state/local health officials and the ABC Science Collaborative

3

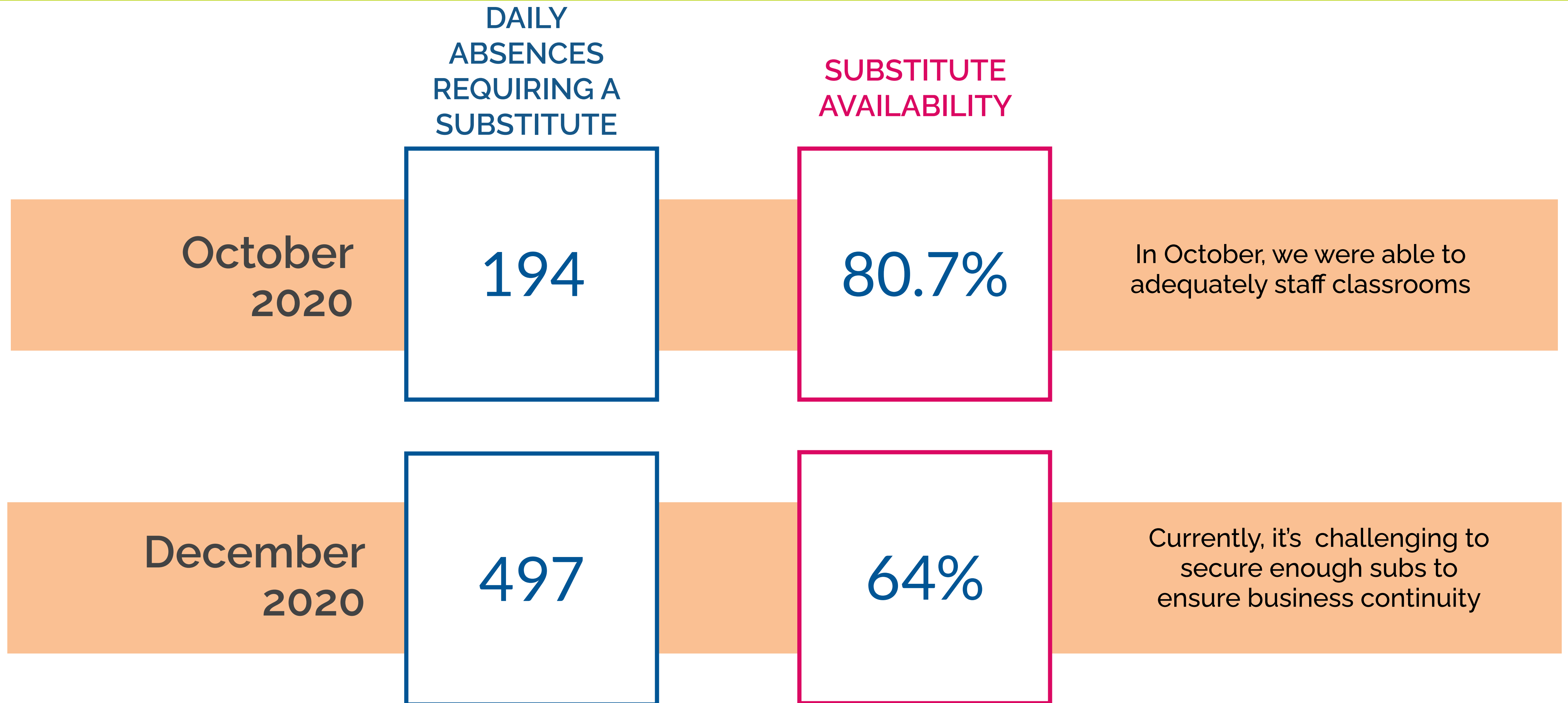
Monitoring implementation of our district's current plan and programming

Reminder: Implementation of any proposed and/or adopted plan is subject to modification due to evolving local and state guidance.

Community Indicators



Staffing Indicators



Classroom Coverage Report Summary



- Data collection tool created with input from principals, Area Superintendents and others
- Responses submitted daily
- Collects number of teachers and IAs not reporting to work (remote or in-person) and staff members re-assigned to cover duties for absent employees
- Building a new data collection platform that will launch in 2021

Proposed Changes

	First Semester Plan	Revision to First Semester Plan
K-12 Regional Programs	Three-cohort rotation, then daily in-person	Remote
PreK - 3	Three-cohort rotation, then daily in-person	Remote
Grades 4-5	Three-cohort rotation	Remote
Grades 6-8	Three-cohort rotation	Remote
Grades 9-12	Remote	Remote



Implications for Calendar

Impact on Calendars

Traditional & Modified

- Semester one ends January 15
- Finish semester one remotely

Single Track 4 YR

- Track out until January 25

Early Colleges, Leadership Academies & Knightdale HS

- January 4 is the start of semester two
- Start the new semester remotely
- Continued alignment with College/University partner for college courses



Implications of Proposed Changes

- **EOC Testing and Exams:** Continue as scheduled
- **Graduation:** Mid-year graduation remains virtual
- **Athletics/Co-Curricular:** Prior approved activities involving athletics, arts and co-curricular activities will continue and will be re-evaluated as needed
- **Transportation:** Transportation will transport middle and high school students who need transportation for required exams
- **Staffing:** Staff will be allowed to work remotely unless job responsibilities require you to be in the building
- **School Building Access:** Front offices will be open to support essential business
- **Child Nutrition Services (Food Distribution Sites):** Curbside distributions will continue, Big Bus Food Truck will continue



Implications for Fall Semester Exams

Teacher-Made Exams

- Exams will be administered virtually for all students taking a teacher-made exam.
- Student exam scores will only be factored into the student's overall course average if the score on the exam is higher than the student's course average going into the exam.

State Tests: End-of-Course & CTE Post Assessments

- State requirement to test in person on campus.
- State requirement to count the state test as 20% of the student's overall grade.
- Students may submit a request for a medical exemption from testing.



Summary Proposed Changes

K-12 Regional Programs Remote January 4 - 15, 2021

PreK - 3 Remote January 4 - 15, 2021

Grades 4-5 Remote January 4 - 15, 2021

Grades 6-8 Remote January 4 - 15, 2021

Grades 9-12 Remote January 4 - 15, 2021

Questions?

WHAT   
STARTS
 HERE
CHANGES
 EVERYTHING.