



Planning for Second Semester

WCPSS Board of Education

January 14, 2021



Planning for Second Semester

Board Request on January 5, 2021:

Provide information around the feasibility of reducing class sizes for grades 4/5 and extending the first semester Plan B rotations for grade 4/5

- Considerations and current context
- Feasibility of options
- Summary
- Board decision

Planning for Second Semester

Considerations and Current Context

Three Considerations Driving Decisions

1

New and/or additional information or Executive Orders from the Governor

2

Collaboration with and learnings from state/local health officials and the ABC Science Collaborative

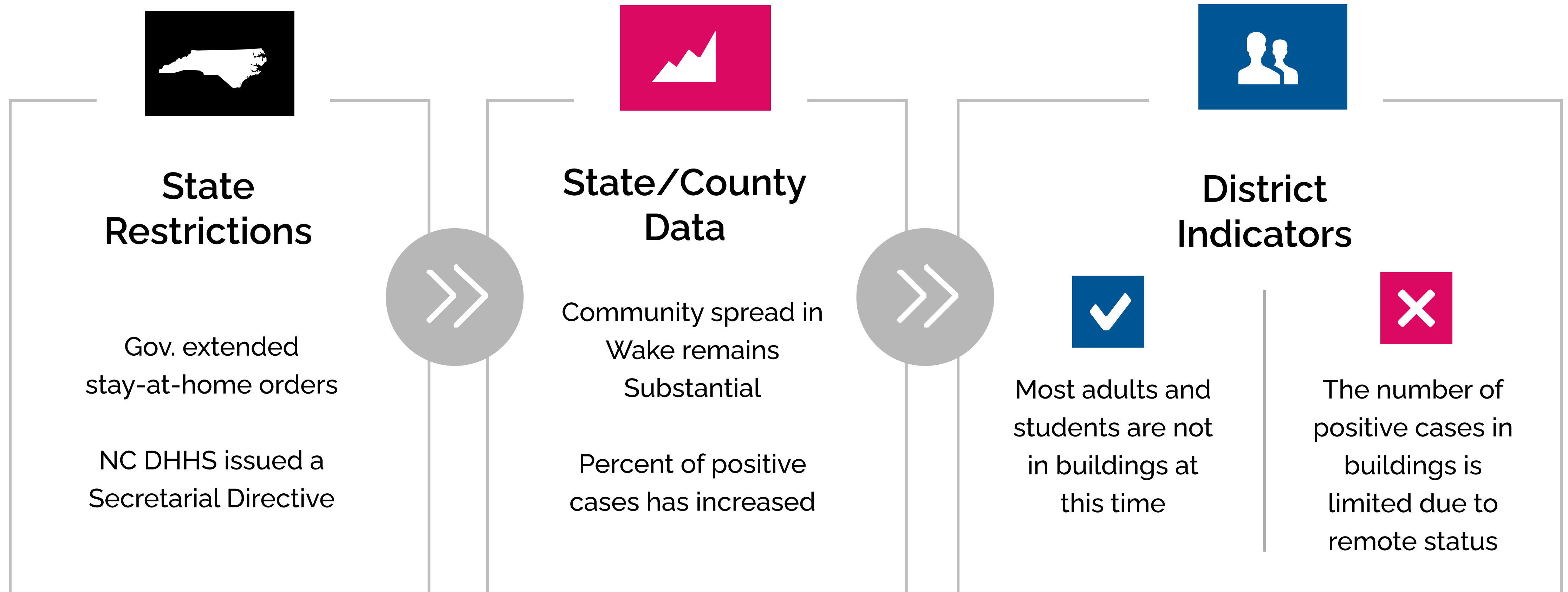
3

Monitoring implementation of our district's current plan and programming

Reminder: Implementation of any proposed and/or adopted plan is subject to modification due to evolving local and state guidance.

Planning for Second Semester

Considerations and Current Context





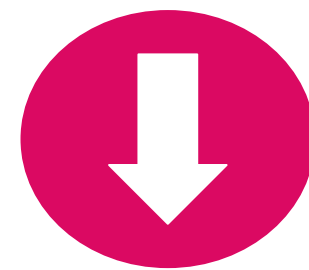
Planning for Second Semester

- Wake County Division of Principals and Assistant Principals recommendation
- NCAE survey and request
- Increase in Virtual Academy enrollment requests (post-registration window)
- Neighboring school districts move to remote instruction
 - ◆ Alamance-Burlington remote until March 1 for K-5/March 8 for 6-12, then Plan B
 - ◆ Chapel Hill remote through March
 - ◆ Cumberland remote until mid-March
 - ◆ Durham K-12 remote for the whole year
 - ◆ Franklin County remains in Plan B
 - ◆ Guilford delays in person for 6-12 for three weeks, K-5 remains in-person Plan A
 - ◆ Johnston pulls back from intended Plan A to limited Plan B beginning February 1
 - ◆ Orange Grades 2-12 remote until end of March

Planning for Second Semester

Focus: Grades 4-5

- ❑ Considerations and current context
- ❑ **Feasibility of options**
- ❑ Summary
- ❑ Board decision



PreK-3

K-12 Regional Programs:
Daily in-person

Grades 4-5:
Daily in-person

Grades 6-8:
Three cohort rotation

Grades 9-12:
Three cohort rotation



PreK-3

K-12 Regional Programs:
Daily in-person

Grades 4-5:
Daily in-person
adhering to <20 per class

Grades 6-8:
Three cohort rotation

Grades 9-12:
Three cohort rotation



PreK-3

K-12 Regional Programs:
Daily in-person

Grades 4-5:
Three cohort rotation

Grades 6-8:
Three cohort rotation

Grades 9-12:
Three cohort rotation

Planning for Second Semester

Current Approved Plan: Grades 4-5

- ❑ Considerations and current context
- ❑ **Feasibility of options**
- ❑ Summary
- ❑ Board decision

Advantages

- Provides stability for master schedule
- Brings ~46,000 students back in 6-12 in rotations
- Daily F2F instruction for Grades 4 and 5

Barriers

- Class sizes too large in Grades 4 and 5
- Social distancing not feasible
- Significant loss of staff flexibility to cover urgent needs
- Larger number of students in common areas

Planning for Second Semester

Revised #1: Grades 4-5 Daily In-Person (adhering to < 20 students per class)

- ❑ Considerations and current context
- ❑ **Feasibility of options**
- ❑ Summary
- ❑ Board decision

Advantages

- Smaller class size
- Better social distancing
- Brings ~46,000 students back in 6-12 in rotations
- Daily F2F instruction for Grades 4 and 5

Barriers

- High Quality Instruction vs. Supervision
- Inability to properly staff the school (absences, quarantines, limited applicant pool, etc.)
- Physical Space for additional classes
- More F2F teachers means larger VA classes
- More than 140 teachers needed even after staff redistributions
- Teacher-student assignments will change

Planning for Second Semester

Revised #2: Grades 4-5 Three cohort rotation

- ❑ Considerations and current context
- ❑ **Feasibility of options**
- ❑ Summary
- ❑ Board decision

Advantages

- Consistent with first semester in the master schedule
- Brings ~46,000 students back in 6-12 in rotations
- 95% of schools can practice social distancing
- Stability - teachers do not have to change in most cases

Barriers

- Grades 4 and 5 will not attend school daily (remain in rotations)
- Reduced direct supervision of student learning compared to face to face
- Schools have already built master schedule for second semester

Planning for Second Semester

Recommendation

- ❑ Considerations and current context
- ❑ Feasibility of options
- ❑ **Summary**
- ❑ Board decision



January 20

Mid February

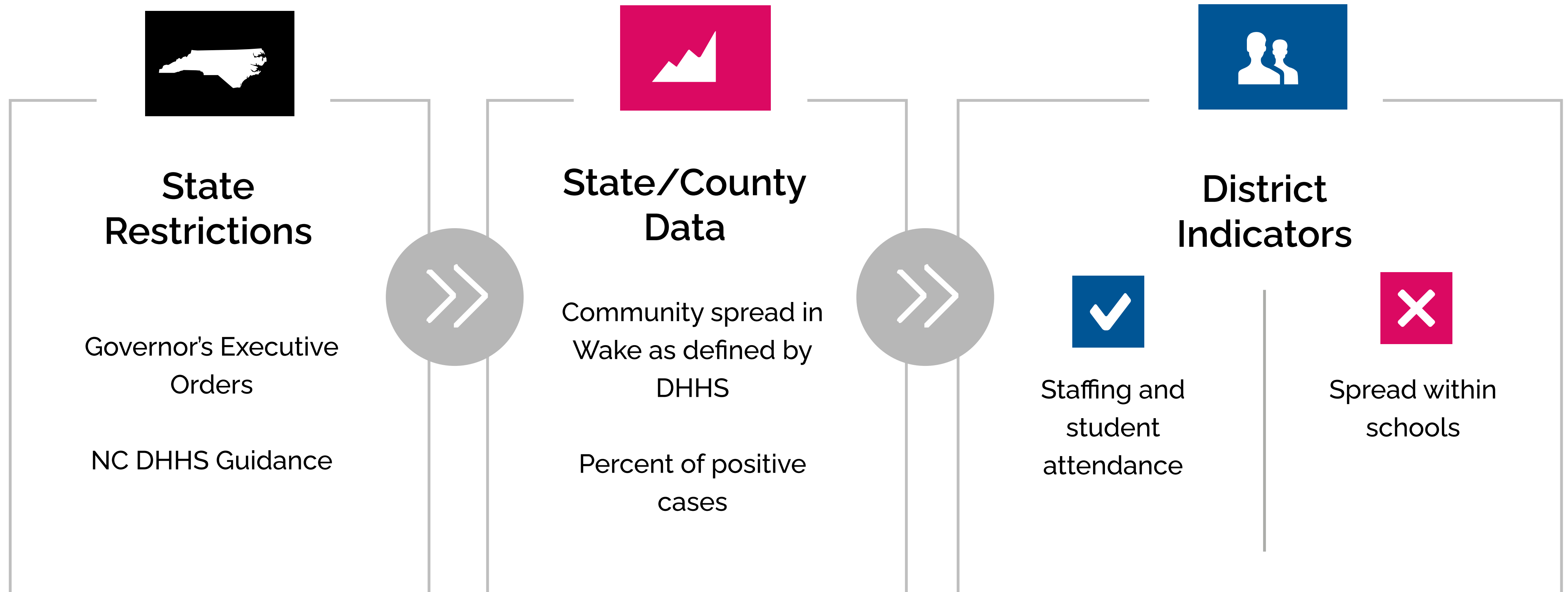
All students, PreK-12

Review status to determine next steps

Remain in remote learning

Planning for Second Semester

Next Steps





Planning for Second Semester

- ❑ Considerations and current context
- ❑ Feasibility of options
- ❑ Summary
- ❑ Board decision

- **Questions**
- **Discussion**
- **Decision**

WHAT   
STARTS
 HERE
CHANGES
 EVERYTHING.