

Student Achievement Committee Presentation

January 25, 2021

Office of Professional Learning

Inclusion Activity 3 Words

1. *Identify **3** words that come to mind when thinking of Professional Learning*
2. *Type your response in the chat, BUT DO NOT HIT SEND*

Desired Outcomes

By the end of our session, the Student Achievement Committee will have an understanding of the work from the Office of Professional Learning Department related to...

- Department Collaborations
- Online and Blended Learning
- Professional Learning Teams
- Instructional Assistant (IA) Empowerment Series
- Adult Social Emotional Learning (SEL)

Note Taking Tool

- Strengths
- Questions
- Wonderings



Student Achievement Committee

[Click here to make a copy of this agenda to take your own notes](#)

Strengths, Questions, and Wonderings Protocol

Directions: As you listen to the presentation, please share your reflections and feedback regarding the segments presented. Capturing strengths, questions, and wonderings.

Strengths - Strong qualities and areas the work seems to meet the desired goal

Questions - Any clarifications you might need to help guide your feedback.

Wonderings - (Cool feedback) Ideas or suggestions for strengthening the work in an area. Cool feedback is couched in "I wonder..." statements (e.g., I wonder if the facilitators role being spelled out more would add clarity?).

Office of Professional Learning

The Office of Professional Learning facilitates and supports high quality professional learning for all staff in the Wake County Public School System.

- [Office of Professional Learning Priorities](#) (Adult Learning, Instructional, Non-Instructional and Support Systems)
- Current 20-21 Office of Professional Learning Course Offerings

Strengths

Questions

Wonderings

Strengths	Questions	Wonderings

Office of Professional Learning



Adult Learning



Instructional



Non-Instructional



Support Systems

Current Offerings 20-21

- Crucial Accountability
- Crucial Conversations
- Strengthening Adult SEL series
- Strengths Finder
- DiSC
- Getting Unstuck (Instructional Assistants)
- Visual Design for Presentation
- Virtual Professional Learning 101
- PLC+ Book Study
- PLC+ Activator Training
- WakeLearns Training



Overview

Departmental Collaboration

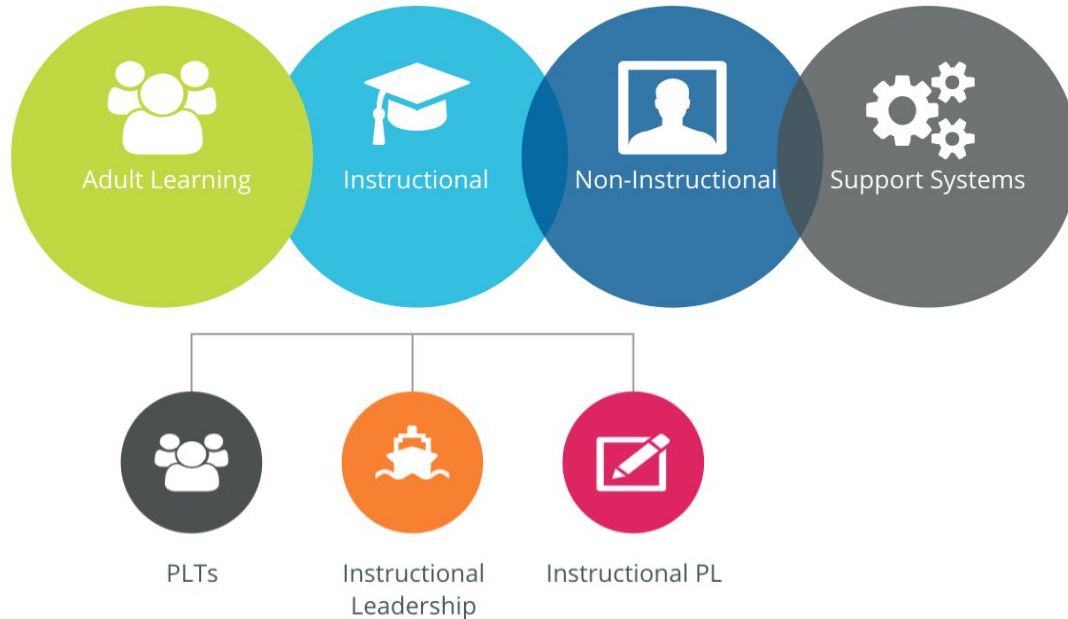
Online and Blended Learning

Professional Learning Teams (PLT)

Instructional Assistant (IA) Empowerment

Adult Social Emotional Learning

Departmental Collaboration



Collaboration with Other Departments

- ❑ Academics
- ❑ Athletics
- ❑ Human Resources
- ❑ Magnet Programs
- ❑ Special Education Services
- ❑ Equity Affairs
- ❑ Data, Research, and Accountability
- ❑ Digital Learning and Libraries
- ❑ Counseling and Student Services



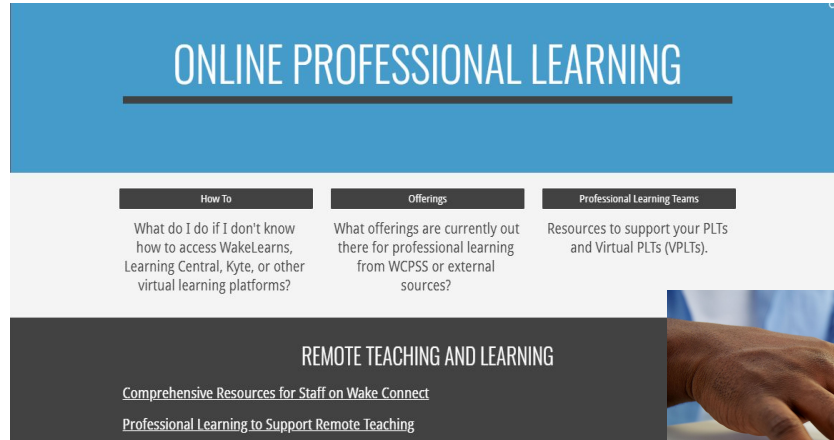
Professional Learning Days



- All schools participated in the PL days
- 9000 employees attended at least one course
- 126 courses were offered
- WakeLearns survey results indicate that 87% of participants identified that their learning would enhance their effectiveness in their job
- Collaboration among 18 departments

WCPSS Online Professional Learning Site

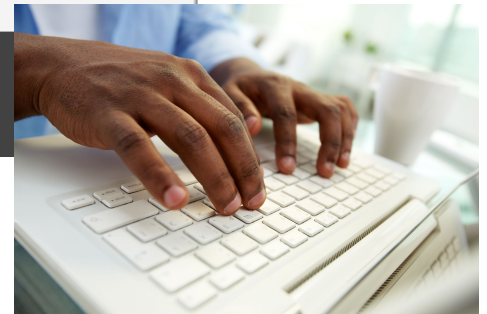
- [Online PL Site](#) launched in March
- Updated frequently with synchronous and asynchronous options
- Could be utilized for teacher workdays



The screenshot displays the 'ONLINE PROFESSIONAL LEARNING' website. The main header is a blue bar with the title in white. Below the header, there are three columns of content:

- How To**: What do I do if I don't know how to access WakeLearns, Learning Central, Kyte, or other virtual learning platforms?
- Offerings**: What offerings are currently out there for professional learning from WCPSS or external sources?
- Professional Learning Teams**: Resources to support your PLTs and Virtual PLTs (VPLTs).

At the bottom of the page, there is a dark grey footer with the text 'REMOTE TEACHING AND LEARNING' and two links: [Comprehensive Resources for Staff on Wake Connect](#) and [Professional Learning to Support Remote Teaching](#).



Future Teachers Conference

- 1st Virtual Conference
- Direct support for 97 Future Teachers
- Development of systems and processes for:
 - Presenter Training
 - Scheduling
 - Participant Documentation
 - Feedback
 - Support



Counseling and Student Services Kick-Off

Health Services 2020-2021 CASS Kick-off > Pages > Kick-Off Home

Home [View All Pages](#) Front Page Published Edit

Announcements [Discussions](#) [People](#) [Quizzes](#) [Modules](#) [Grades](#) [Assignments](#) [Files](#) [Pages](#) [Syllabus](#) [Rubrics](#) [Outcomes](#) [Conferences](#) [Collaborations](#) [Settings](#)

Kick-Off Home

Counseling and Student Services 20-21 Virtual Kick-Off

School Social Workers

School Psychologists

Health Services

School Counselors

<https://wcpss-staff.instructure.com>

Micro-Credential Pilot



Teacher Protocols



Social Emotional
Learning



Intercultural
Competency



Student Agency

Online and Blended Learning



Online and Blended Learning Courses

- ❑ **Blended & Online Learning Environments**
 - ❑ Sections for Teachers
 - ❑ Sections available to IAs
 - ❑ Sections available to SUBS
 - ❑ Section open for new hires
- ❑ **Pulling WakeLearns Reports**
- ❑ **What's Next?**



Online and Blended Learning Courses

Course	Completed
Courses for Teachers	
Designing <i>a Blended and Online Learning Environment</i>	11,996
Instructional Design <i>in a Blended and Online Learning Environment</i>	11,035
Communication <i>in a Blended and Online Learning Environment</i>	10,806
Feedback <i>in a Blended and Online Learning Environment</i>	10,936
IA Support & Communication <i>in a Blended and Online Learning Environments</i>	1492
Substitute	
Instruction <i>in a Blended and Online Learning Environment</i>	1044
Designing <i>a Blended and Online Learning Environment</i>	1241

Strengths, Questions, Wonderings

Step 1



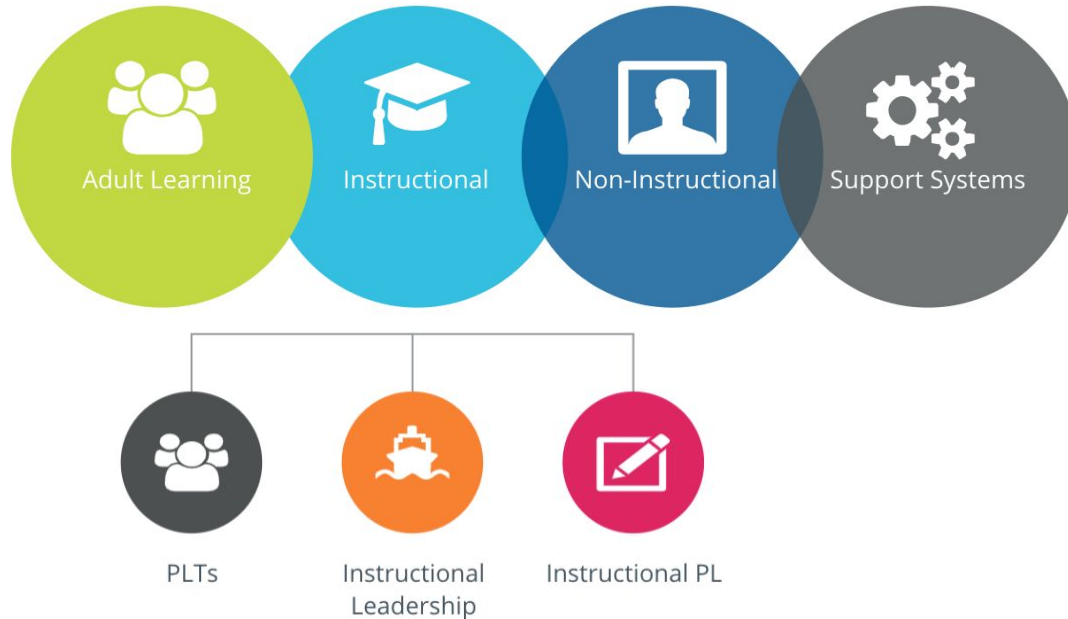
Think Time

Step 2



Group Share

Professional Learning Teams



Is it PLT, PLC, or PLC+?



PLC+: Better Decisions and Greater Impact by Design...



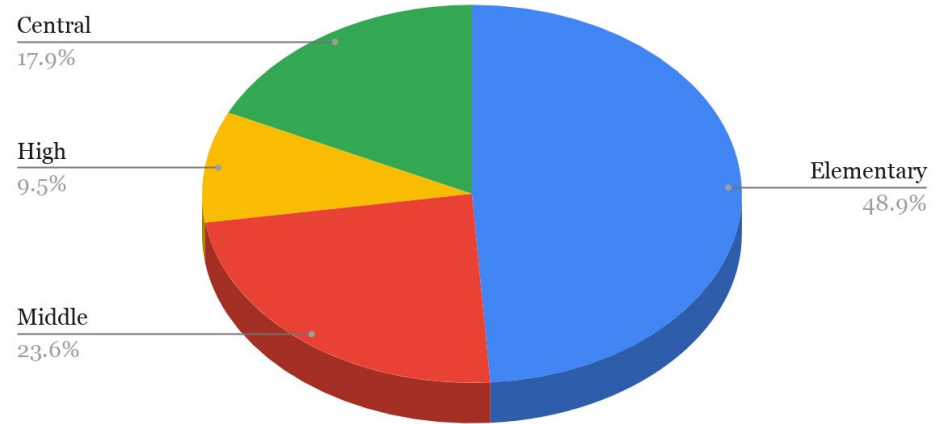
- Focuses on five essential questions:

<i>Where are we going?</i>	<i>Where are we now?</i>	<i>How do we move learning forward?</i>	<i>What did we learn today?</i>	<i>Who benefited and who did not benefit?</i>
----------------------------	--------------------------	---	---------------------------------	---

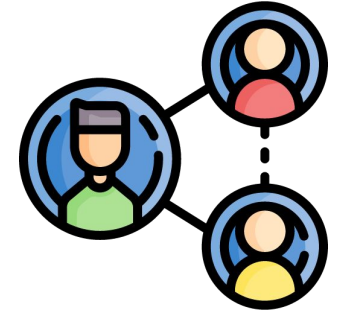
- ***Equity, High Expectations, Individual/Collective Efficacy, & Activation***
- Offers teams and individuals tools, protocols, and processes useful in engaging in the PLC+ work

PLC+ Data Snapshot

- **368** staff members
 - 180 Elem School
 - 87 Middle School
 - 35 High School
 - 66 Central Services
- Participation from **97** WCPSS schools
 - 58 Elem schools
 - 23 Middle schools
 - 16 High schools
- Representation from all nine WCPSS areas
- Additional schools have launched PLC+ work



The Activator Network



- Extends the *PLC+* work, focusing on **Activation**
- Equips participants with tools and skills to activate teams in their schools by exploring the following topics:

<i>Effective Collaboration</i>	<i>Establishing Roles & Developing Team Cohesion</i>	<i>Developing Norms and Protocols</i>	<i>Activating the Five Essential Questions & Four Crosscutting Values</i>
<i>Scheduling PLC+ Meetings & Meeting Cycles</i>	<i>Activating a High-Impact and High-Functioning PLC+</i>	<i>Activating Conversations Focused on Equity</i>	

- Extends professional learning opportunities to ***cycles*** of study, learning, coaching, and collaboration with OPL and peers

Activator Network Data Snapshot



- 116 individuals are currently in the Activator Network
- 47 schools are represented
- All nine areas of WCPSS are represented

Additional PLT Supports

PROFESSIONAL LEARNING TEAMS



VPLT BEST PRACTICES



SAMPLE VPLT AGENDA



SAMPLE VPLT VIDEO



PLT 101 COURSE



PLT TOOLKIT



OPL SUPPORT HOURS



PLT 101 Course



PLT TOOLKIT



PLTS



NORMS & ROLES



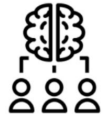
STANDARDS FOR
SUCCESSFUL MEETINGS



PLT SELF-ASSESSMENT

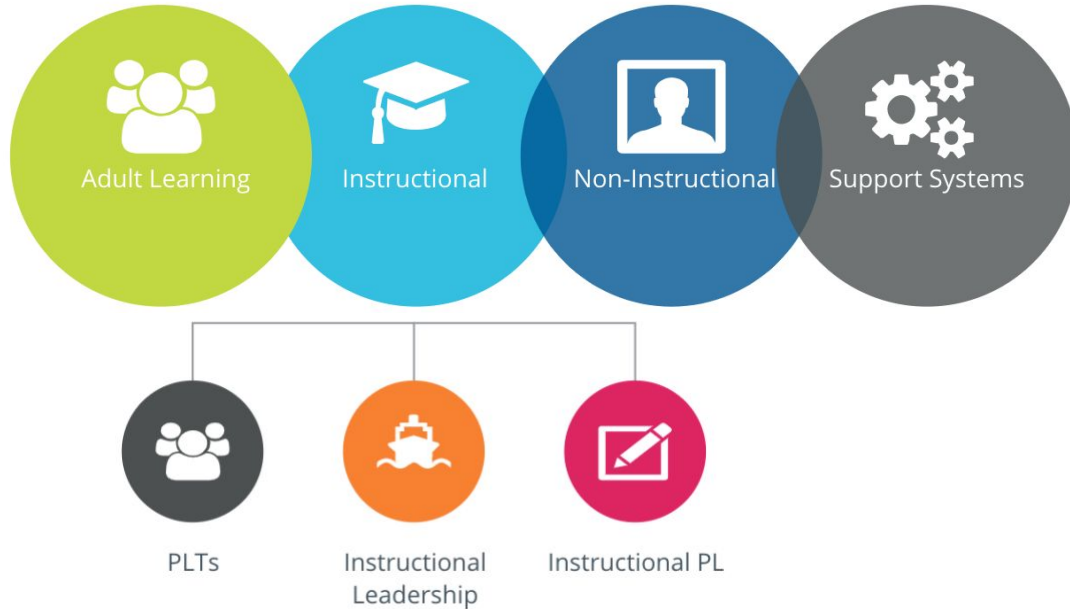


TEAM RELATIONSHIPS



COLLABORATIVE SCHOOL
CULTURE

Instructional Assistant Empowerment



What is IA Empowerment?



- A series of professional learning offerings
- Inclusion in certified staff offerings
- Increased awareness of higher education offerings
- Development of career pathways for professional growth
- Culminating conference for ALL Instructional Assistants

IA Empowerment 19-20



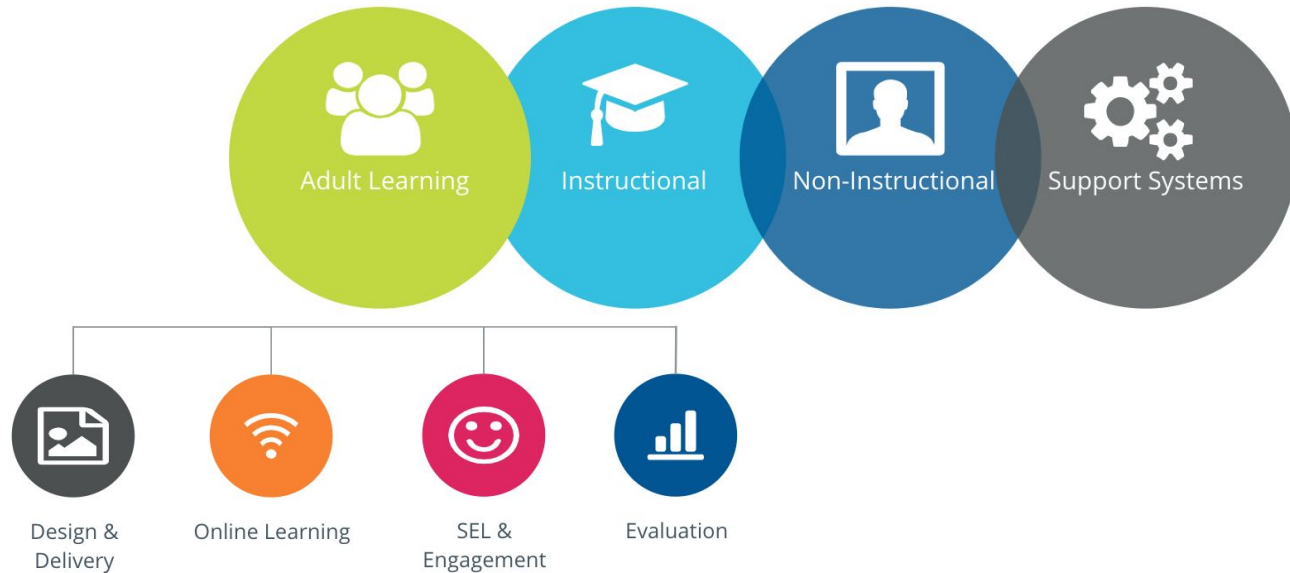
- Over 1500 participants
- Day and Evening Courses
- IA Conference
- Google Training
- Inclusion in District PL Days
- University Partnerships

IA Empowerment 20-21

- Online and Blended Learning
- University Partnerships
- Kyte Learning
- Micro-Credential Pilot



Adult Social Emotional Learning



What is SEL?

The **process** through which **children AND adults**

- Understand and manage emotions
- Set and achieve positive goals
- Feel and show empathy for others
- Establish and maintain positive relationships
- Make responsible decisions



(Source: CASEL)

Adult SEL Professional Learning

- Synchronous
- Asynchronous
- Behavioral Health Guide

Staff Behavioral Health Professional Learning & Resource Guide

How to use this Document: [Video](#)

Purpose of this Document:

- To outline the scaffolded and comprehensive **district professional learning program that supports ALL staff** in developing behavioral health skills aligned with district goals.
- To outline the **frequent opportunities for staff to practice, model, and enhance** these competencies, including consistent and scaffolded professional learning experiences.



Behavioral Health defined: [Slides](#)

In WCPSS, the term "Behavioral Health" includes **Social and Emotional Learning (SEL)** support and **Mental Health** support for staff.

Social & Emotional Learning (SEL): The **process** through which children **and adults** acquire and effectively apply the knowledge, attitudes, and skills necessary to understand and manage emotions, set and achieve positive goals, feel and show empathy for others, establish and maintain positive relationships, and make responsible decisions (CASEL). The main supports to strengthen staff SEL include Adult SEL offerings from Office of Professional Learning, the Community Resiliency Model program (CASS), and the Restorative Practices Program (RP).

Mental Health: Mental health is not simply the absence of mental illness but also encompasses social, emotional, and behavioral health and the **ability to cope with life's challenges** (National Association of School Psychologists, NASP).

Strengths, Questions, Wonderings

Step 1



Think Time

Step 2



Group Share

Self-Control

3RD Grade
4TH Grade
Grade

Be the CHANGE You want
to see in the WORLD!

-Mahatma Gandhi

Thank You.

