

Student Support Services

Behavioral Health Practices: Mental Health Services

*Wake County Board of Education Board Student Achievement Committee
February 22, 2021*



Presenters

Paul Koh, Assistant Superintendent, Student Support Services

Marrius Pettiford, Ph.D., Senior Director, Counseling & Student Services

Debbie Richardson, Director, Alliance Behavioral Health

Panel Members Available for Questions

Cam Lopes, Director, Special Education Services

Michael Pesce, Director, School Social Work

Brian Glendenning, Sr. Administrator, Healthful Living

Kelly Lister, Sr. Administrator, Crisis Prevention & Intervention

Jill Harris-Velez, Bilingual School-Based Liaison



Desired Outcomes

- Provide an overview of the importance of mental health
- Review SB199 and requirements for mental health supports
- Share example practices supporting mental health for students, families, and staff
- Provide overview of Alliance Healthcare partnership and impact
- Review next steps for our mental health work



WCPSS Core Beliefs (Our Why)

#1 Every student is uniquely capable and deserves to be challenged and engaged in relevant, rigorous, and meaningful learning each day.

#2 Every student is expected to learn, grow, and succeed while we eliminate the ability to predict achievement based on socioeconomic status, race, and ethnicity.

#3 Well-supported, highly-effective, and dedicated principals, teachers, and staff are essential to success for all students.

Behavioral Health

Social & Emotional
Learning (SEL)

Mental Health

Behavior

Behavioral Health: Mental Health



Mental Health Collaborative



WCPSS Board Policies: Behavioral Health and Mental Health Service

<ul style="list-style-type: none">● 1710/4021/7230 Prohibition Against Discrimination, Harassment, and Bullying● 1510/4200/7270 School Safety	<ul style="list-style-type: none">● 4240/7312 Child Abuse and Related Threats to Child Safety● 4309 Student Behavior – Code of Student Conduct● 4400 Attendance
<ul style="list-style-type: none">● 3226/4205 Internet Safety● 3430 School Improvement Plan● 3610 Counseling Program	<ul style="list-style-type: none">● 6140 Student Wellness

Laws and Board Policies connected to Behavioral Health and Mental Health Service

Legal Statutes	State/Local Board Policies	WCPSS Impact
Senate Bill 199/SL 2019-245 Link		Training on New Mandatory Reporting Requirement
Senate Bill 199/SL 2019-245 Link	School Based Mental Health Policy SHLT-003	Annual report due September 15



School-Based Mental Health Policy SHLT-003

An act to require the State Board of Education to adopt a school-based mental health policy and require K-12 school units to adopt and implement a school based mental health training program and a suicide risk referral protocol.

Policy SHLT 003

Example - Behavioral Health and Mental Health Services

School Level	District Level
Student Support Services Team Provide Mental Health Awareness Training	District Provide Mental Health Services Guidance
CORE Behavioral Health Reopening Plans	Professional Development & Training Around Community Systems and Resources
Classroom Guidance & Lessons	Behavioral Health Best Practices & Strategies Training

Student and Family Supports

School Level	District Level
Student Support Services Professional Learning Teams	Alliance Behavioral Health
Mental Health Wellness Training	Community Liaisons
Prevention Curriculum <ul style="list-style-type: none">● Curriculum Related to Mental and Emotional Health and Interpersonal Communications and Relationships● Funny Tummy● Human Trafficking	Supportive Counseling
Crisis Training Signs of Suicide	Student & Family Wellness Sessions



Mental Health Supports

Parent-Initiated Calls: Alliance Access Staff 1-800-510-9132 (parents only) - Students may be covered by private insurance, Medicaid, or they may be uninsured.

School-Based Referrals: Alliance Bridge to Success Program - School teams refer to Alliance with parental consent.

Community-Based Supports:

- WCPSS has agreements with community agencies that can provide preventative and supportive counseling support which do not rise to the level of mental health support needed for an Alliance referral

Community Resiliency Model & Restorative Practices: Supports provided for schools to address building relationships and ensure trauma-informed practices are being developed.



Wellness Supports for Students, Families, and Caretakers

- **Community Resiliency Model Wellness Training**
- **Restorative Practices and Community-Building Circles**
- **Keeping your Kids Emotionally & Physically Safe**
- **Asynchronous Virtual Parent Summit**
 - Anxiety & COVID, Motivation & Engagement, Self-Care

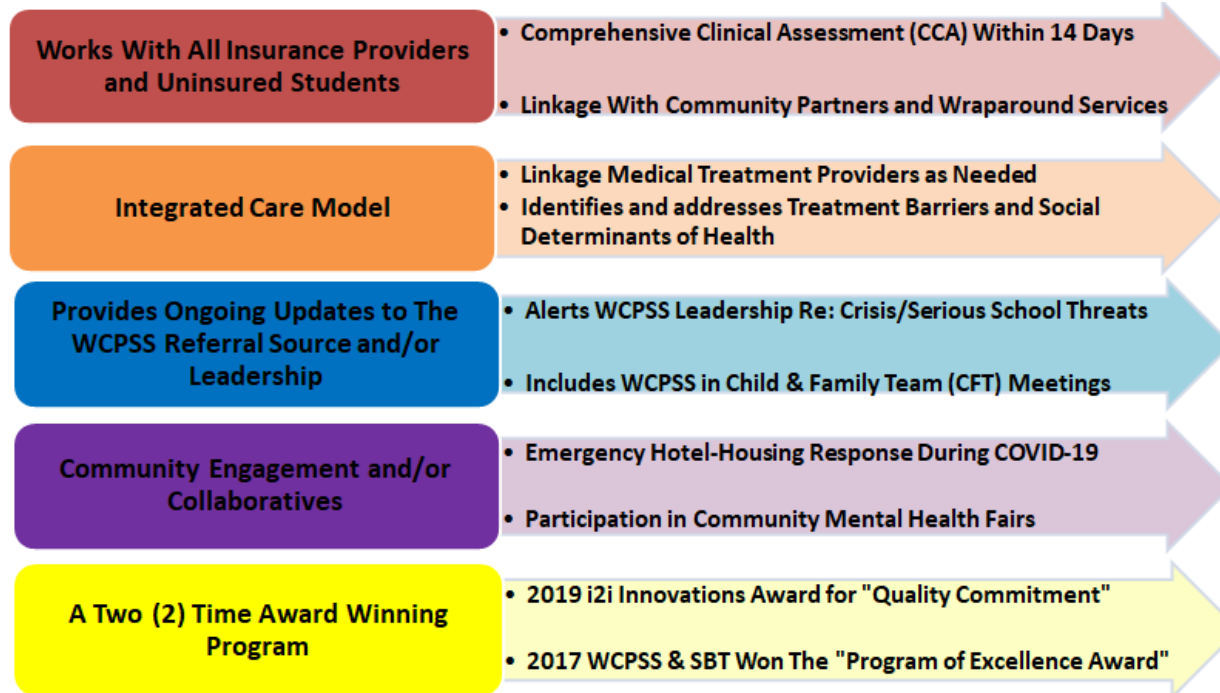
All sessions available February 2021 to May 2021

<https://www.wcpss.net/wellness>

Mental Health Collaborative



Alliance Health





Alliance Health

School Based Team (SBT) Areas of Specialization:

Intellectual and Developmental Disabilities (IDD) Care Coordination

Crisis Care Coordination

Justice Liaison

Psychiatric Residential Treatment Facility (PRTF) Care Coordination

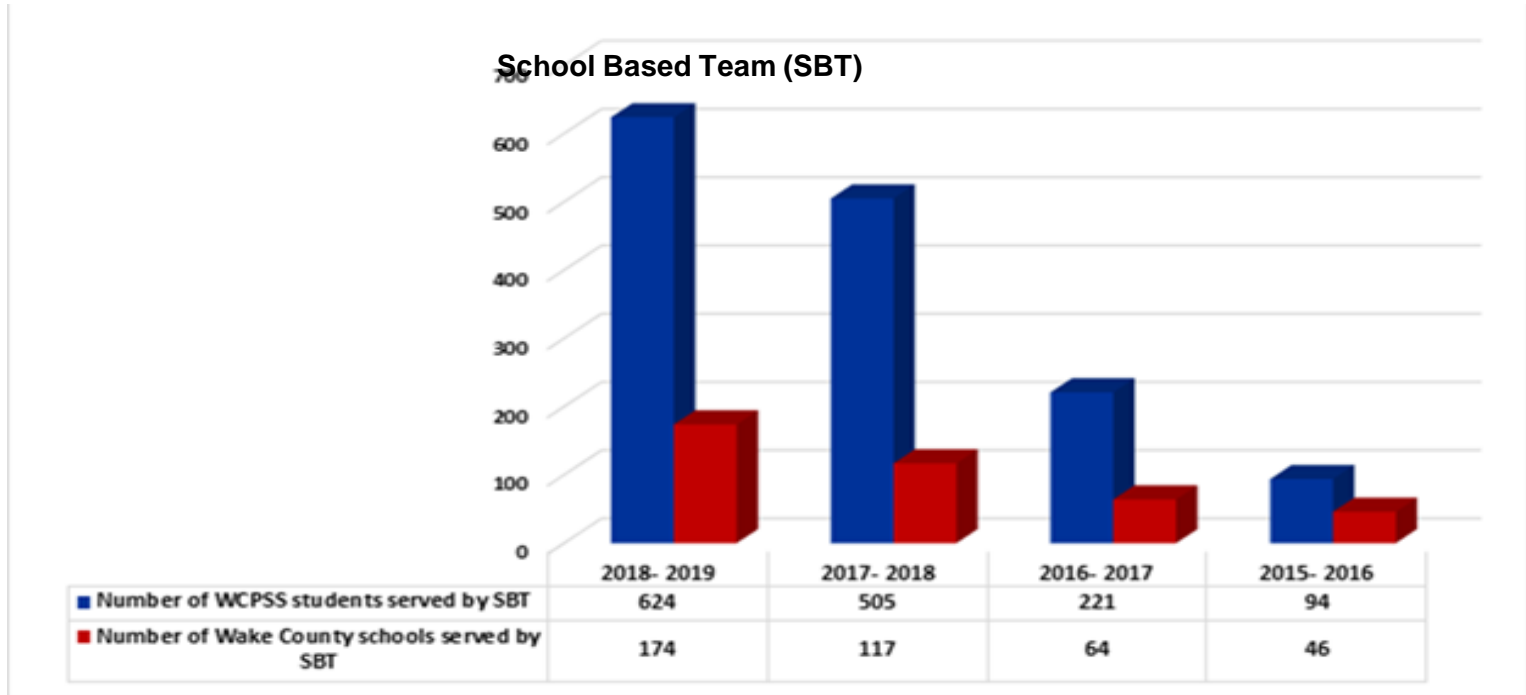
Early Childhood Care Coordination

Family Engagement Liaison

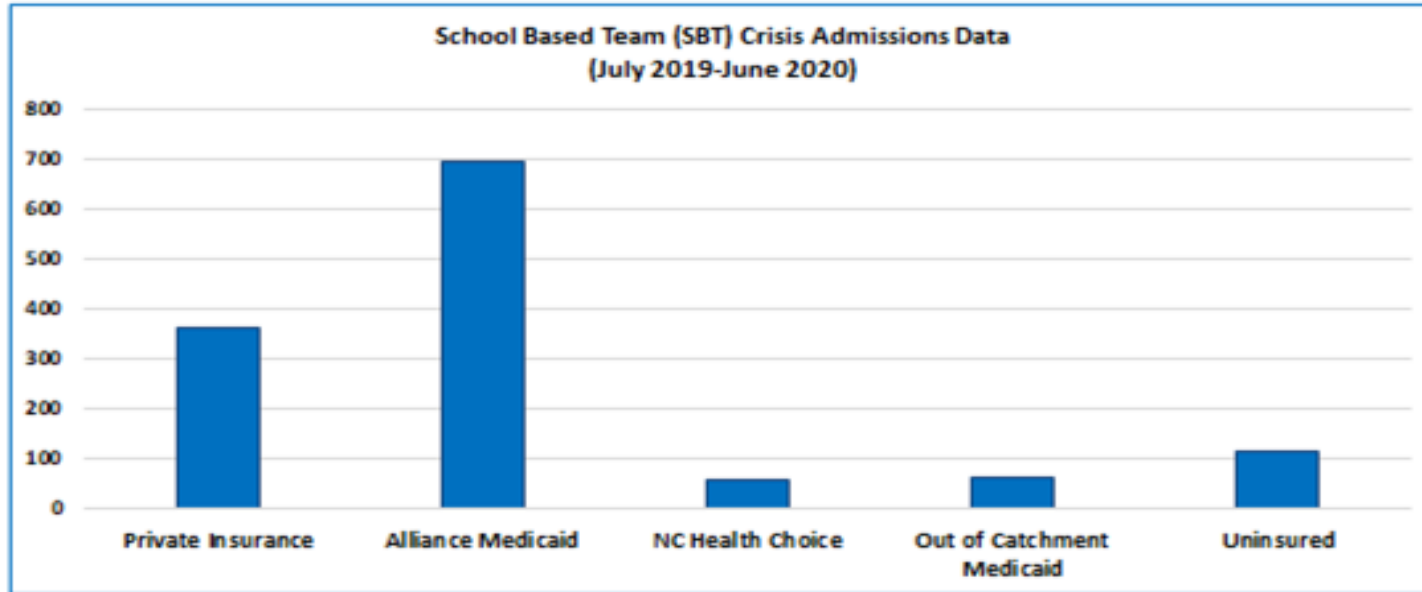
Embedded Alternative School Care Coordination

Bilingual (English/Spanish) Care Coordination

Alliance Health



Alliance Health



***This data reflects the census information that SBT received from WakeMed, HHH, and UNC Wakebrook between July 1, 2019 - June 30, 2020. There may be additional crisis admissions from these facilities that were not captured in the census data that SBT received.**

Next Steps

- Continue to research and explore additional resources around the implementation and delivery of School Based Mental Health services in support of overall behavioral health for students.



Questions

