

2022-2023 Enrollment Plan

Initial Planning

Wade Martin, Assistant Superintendent for School Choice, Planning and Assignment
Glenn Carrozza, Senior Director - Office of Student Assignment

BOE Work Session
April 20, 2021

Why are we here?

Staff is here today to begin discussing the 2022-2023 Enrollment Plan.

Our goal for today's meeting is to provide talking points, and to solicit feedback from the Board, so that staff may begin to plan for Draft 1.

What will be discussed?

- New Schools Opening in 2022-23
- Capped/Overcrowded Schools for 2021-22
- Calendar Alignment for Base Schools
- Year-Round Schools
- Historical Assignment Areas

WCPSS Board Policy 4150: School Assignment and Transfers

A. DRAWING OF SCHOOL ATTENDANCE AREAS

1. The assignment areas will be developed by balancing, to the extent reasonable, the goals and factors set forth below and will include target ranges, where appropriate, to accomplish these goals and factors:
 - **Operational Efficiency**
 - **Proximity**
 - **Stability**
 - **Student Achievement (3-year average data will be used)**

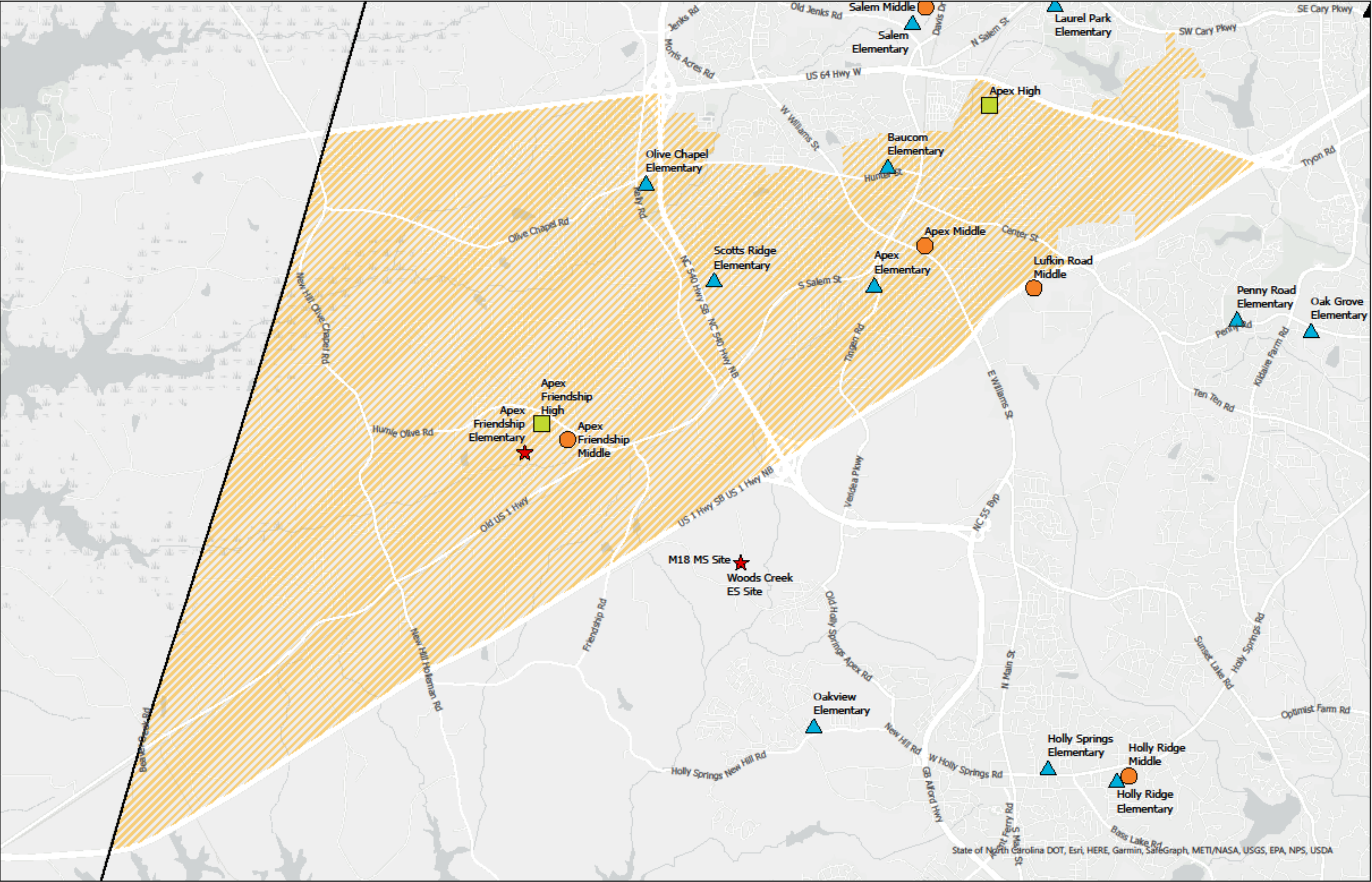
Apex Friendship Elementary School

Calendar: Traditional / Multi-Track Year-Round?

Capacity: 716 as traditional / 924 as multi-track year-round

Grades: K-5

Potential Impact Area-Apex Friendship Elementary



New School Opening- Barton Pond Elementary (2022-23)

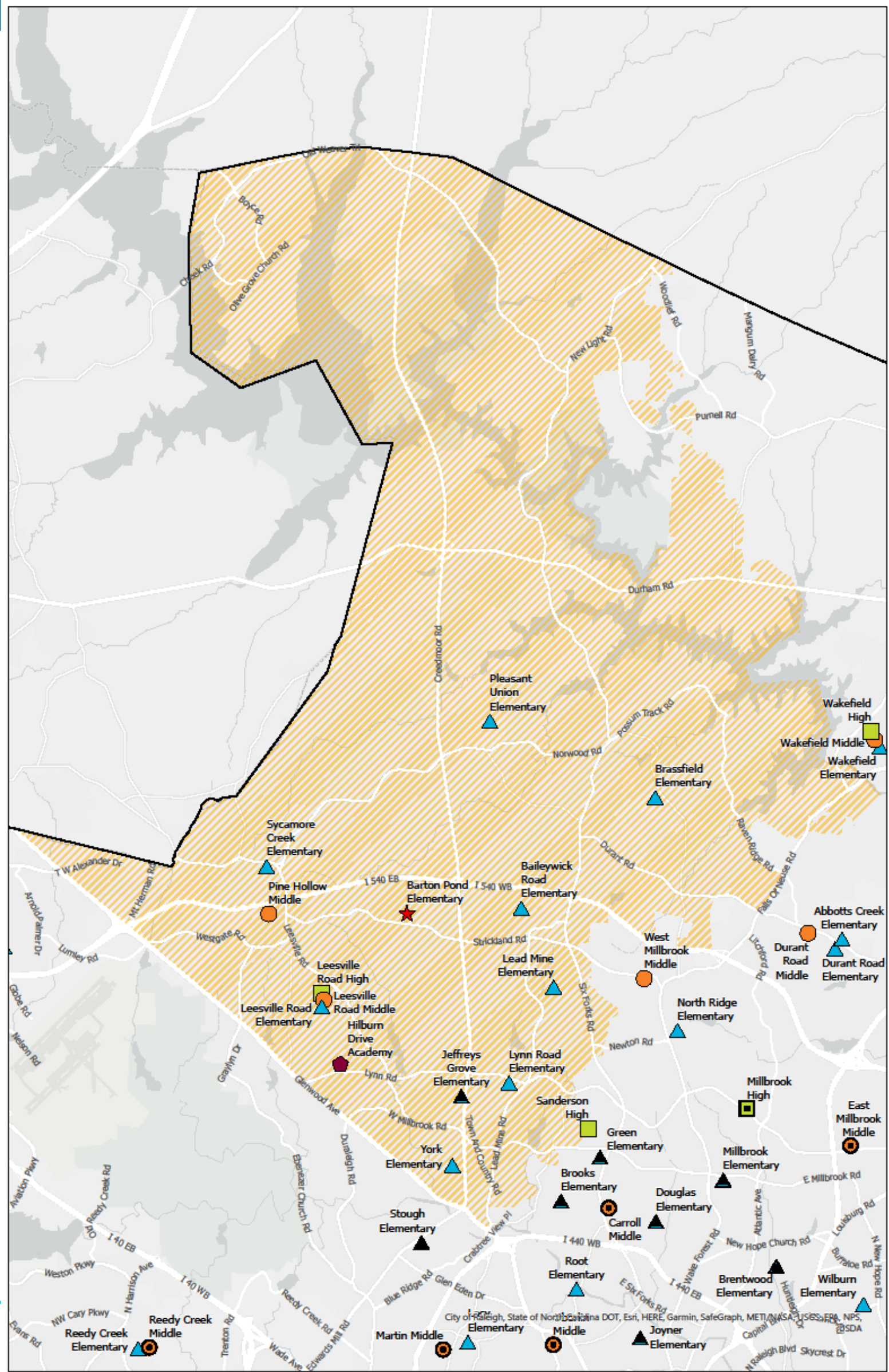
Barton Pond Elementary School

Calendar: Traditional / Multi-Track Year-Round

Capacity: 616 as traditional / 814 as multi-track year-round

Grades: K-5

Potential Impact Area-Barton Pond Elementary



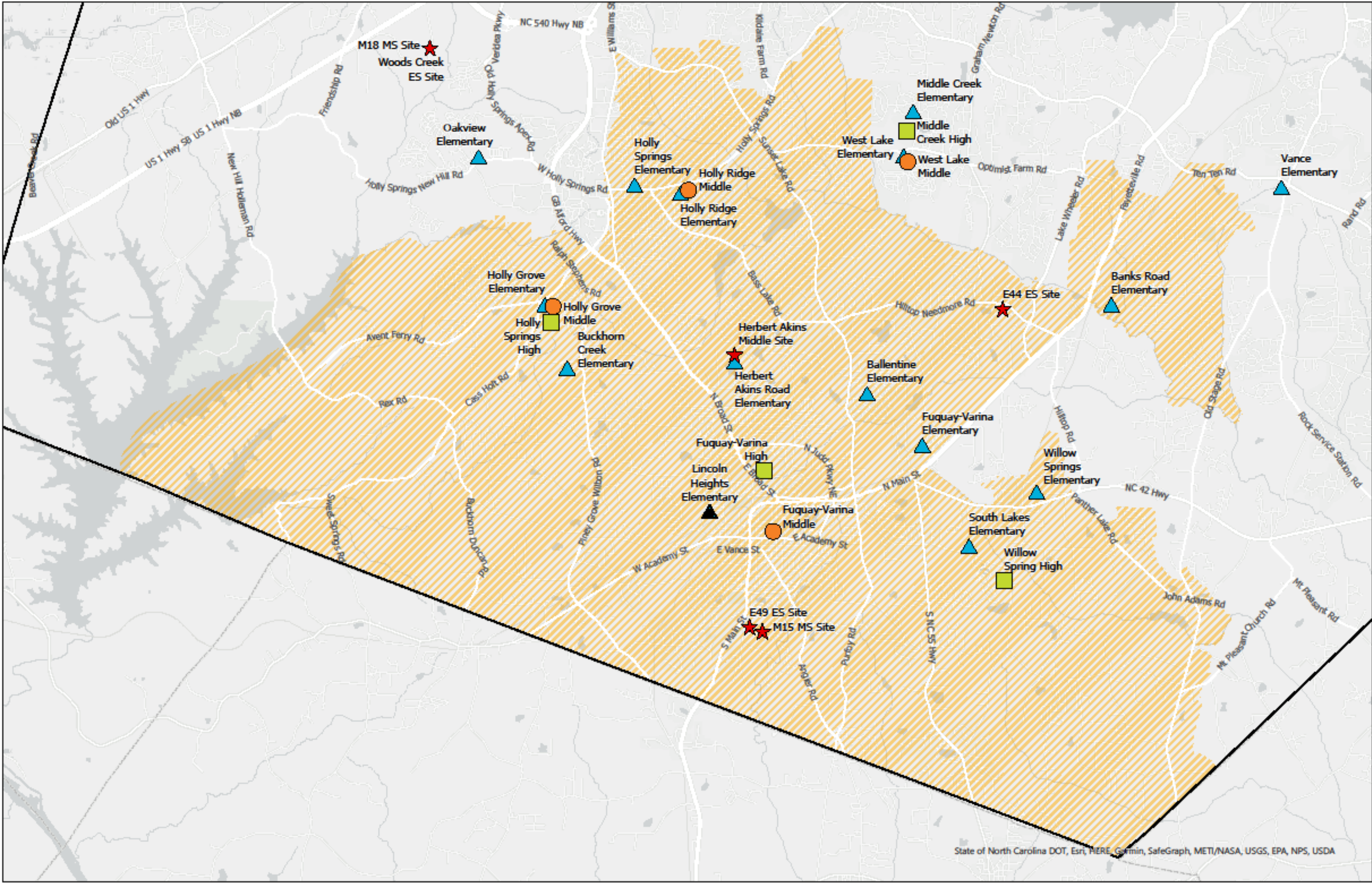
Herbert Akins Road Middle School

Calendar: Traditional / Multi-Track Year-Round

Capacity: 936 as traditional / 1,248 as multi-track year-round

Grades: 6-8

Potential Impact Area-Herbert Akins Road Middle



Operational Efficiency-Capped Schools

Elementary schools with an enrollment cap for 2021-2022:

- Abbotts Creek
- Alston Ridge
- Beaverdam
- Cedar Fork
- Combs
- Highcroft
- Holly Grove
- Hortons Creek
- Lead Mine
- Mills Park
- Northwoods
- Oakview
- Olive Chapel
- Rogers Lane
- Scotts Ridge
- Sycamore Creek
- Weatherstone
- White Oak

Operational Efficiency-Capped Schools

Secondary schools with an enrollment cap for 2021-2022:

- Apex Friendship Middle
- Mills Park Middle

- Apex Friendship High
- Heritage High
- Panther Creek High

Calendar Alignment for Base Schools

Calendar alignment for base schools is beneficial for several reasons:

- Provides families K-8 consistency
- Allows for improved long-range planning
- Improves cohort health for rising 6th graders

Year-Round Schools

Assessing areas of need based on long-range enrollment projections

- High areas of growth that are not currently supported by the Capital Improvement Plan
- “Aging out” effect- areas showing a decline in K-12 student populations over time

Historical analysis of application data

- Identifying trends with regards to applications into and out of specific schools in each region
- Analyzing the impact of our current selection criteria

Historical Assignment Areas

Areas that are not proximate to their base school

- Analysis of the support they provide to the district's goals
- Identifying areas that may be more proximate to schools, when possible

Additional Items to Consider?

Does the Board have any other items they would prefer to be included in the 2022-23 Enrollment Plan?

Dialogue and Questions

Staff is available for questions from members of the Board