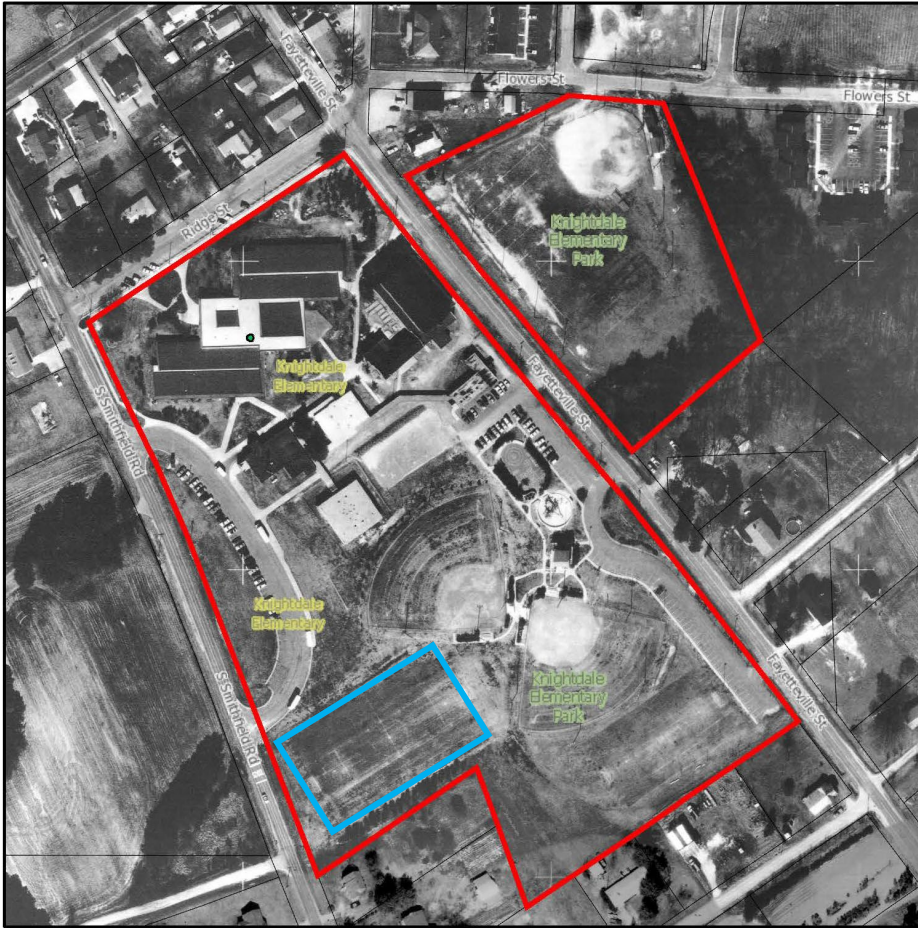


Knightdale Elementary School/Park Multipurpose Field Utilization Evolution



1988 GIS Aerial View

 Multipurpose Field



1999 GIS Aerial View

Depicts utilities and sidewalks added to multipurpose field in preparation for trailer classroom placement.



2005 GIS View

Depicts trailer classrooms installed on the multipurpose field.



2010 GIS Aerial View

Depicts removal of trailer classrooms from the multipurpose field in lieu of placement of a multi-classroom modular unit and driveway on the outfield of the adjacent ballfield.



2017 GIS Aerial View

Depicts Town's installation of fencing on the ballfield shortened by the modular placement to enhance functionality, and identifies the approximate area slated for removal of former trailer classroom infrastructure and restoration of multi-purpose field for school and Town use.