



Updates on 2021-2022 WCPSS Virtual Academy Program Planning

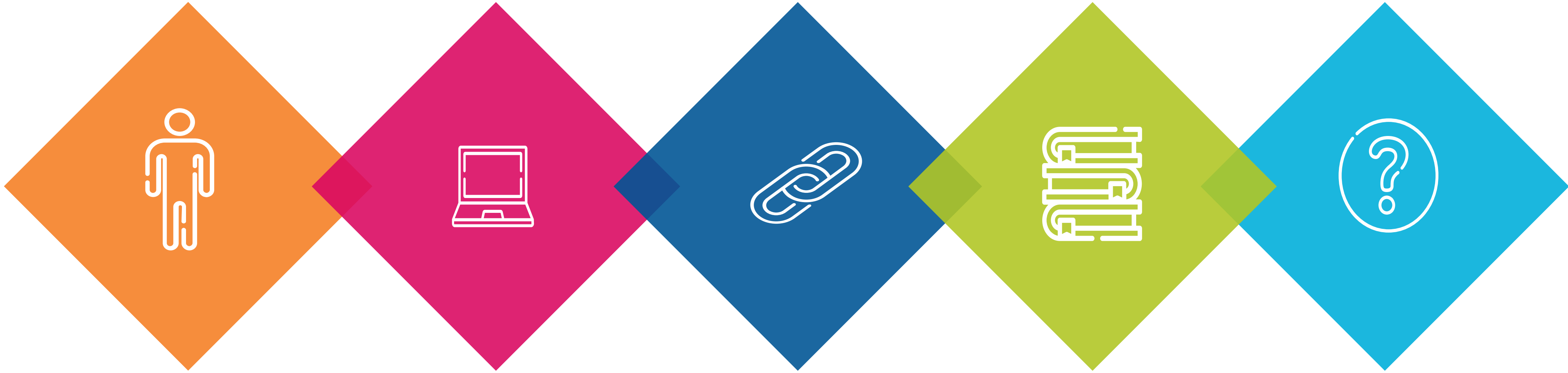
WCPSS Board of Education Work Session

June 15, 2021

Drew Cook, Assistant Superintendent for Academics
Alicia Miller, Director for Curriculum and Instruction



Agenda



Registration Data

Instructional
Design &
Scheduling
Process

Key Factors for
Implementation
& Next Steps

SB 654

Questions &
Answers



2021-2022 Registration Opportunities

- **Registration Window:** April 22 - May 2
- **Registration Waitlist Window:** May 3 - May 12
- **Opt-Out Window:** Communicate Decision by May 19
- Families have received confirmation letters.

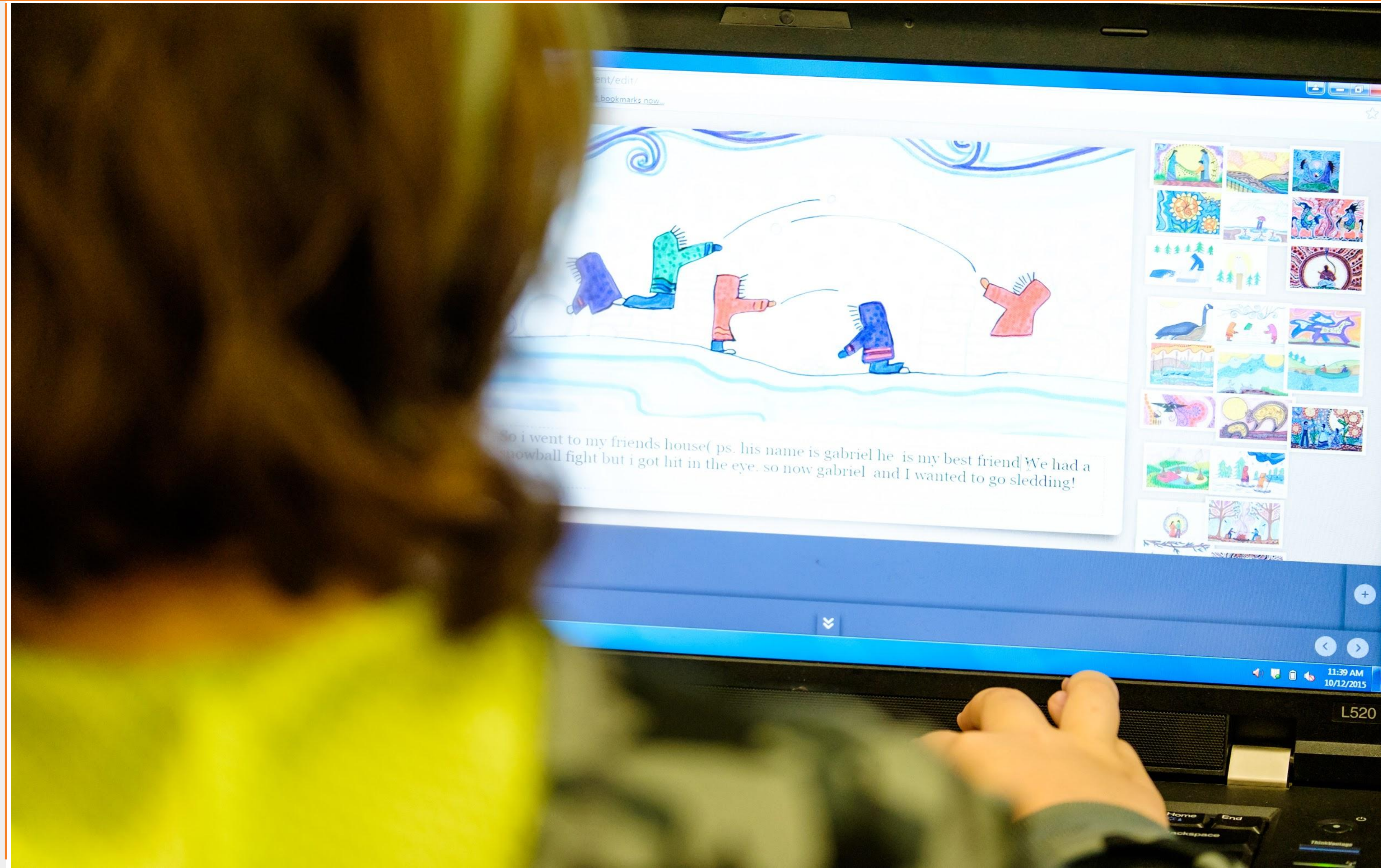
2021-2022 Registration Data

Total Students
11,527

K-5: 5,316

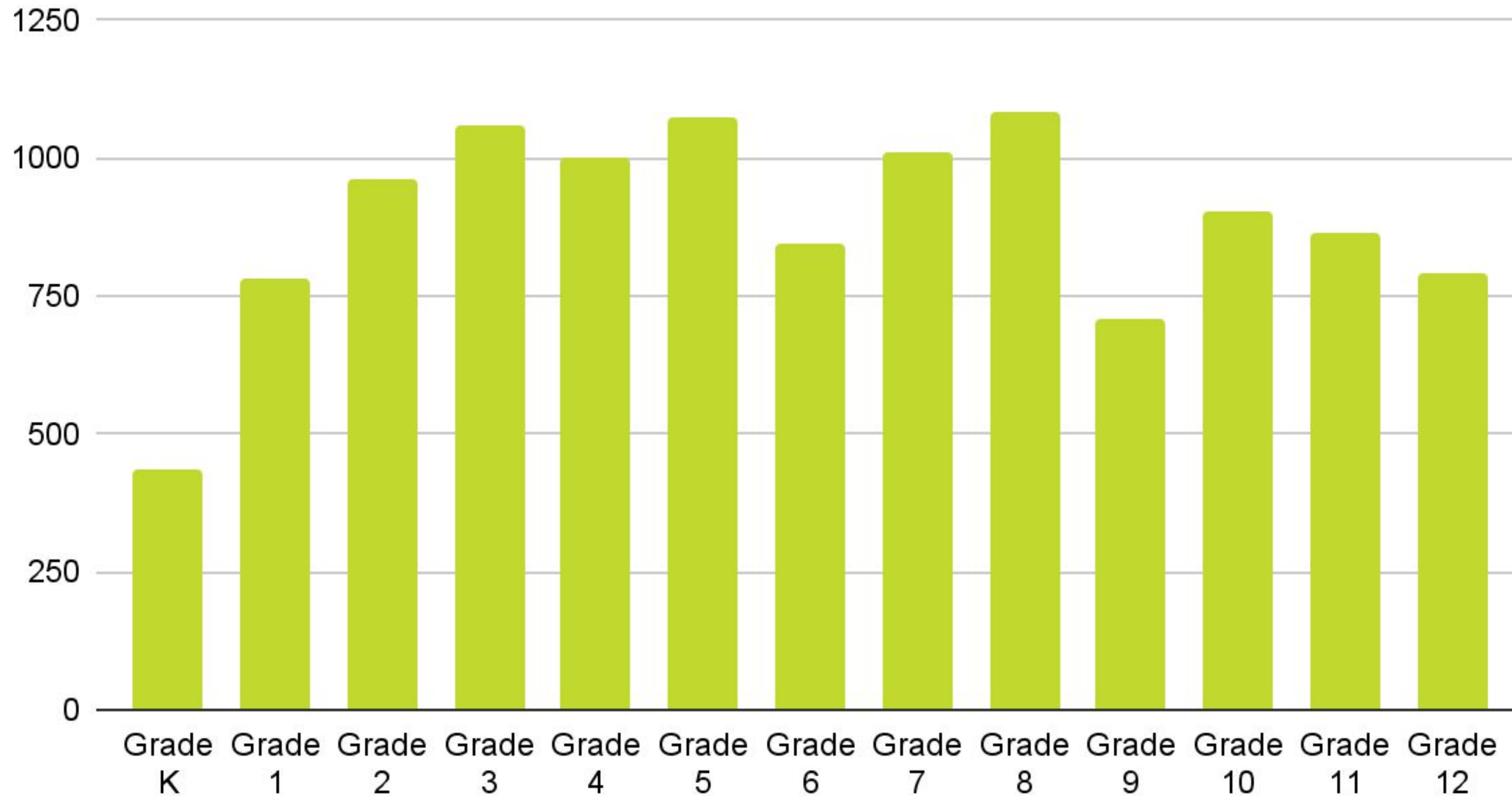
6-8: 2,937

9-12: 3,274



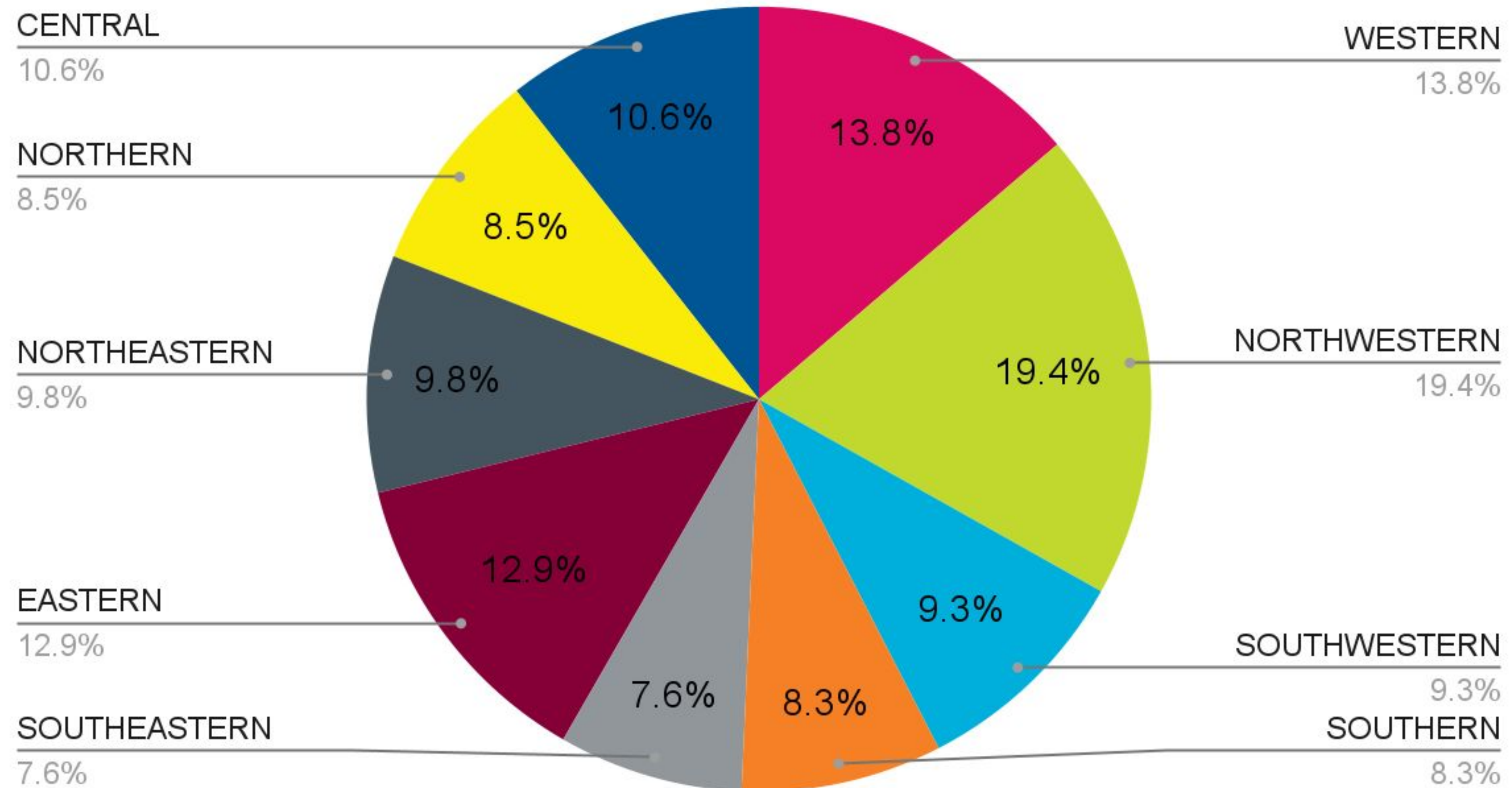
2021-2022 Registration Data by Grade Level

Number of VA Students per Grade

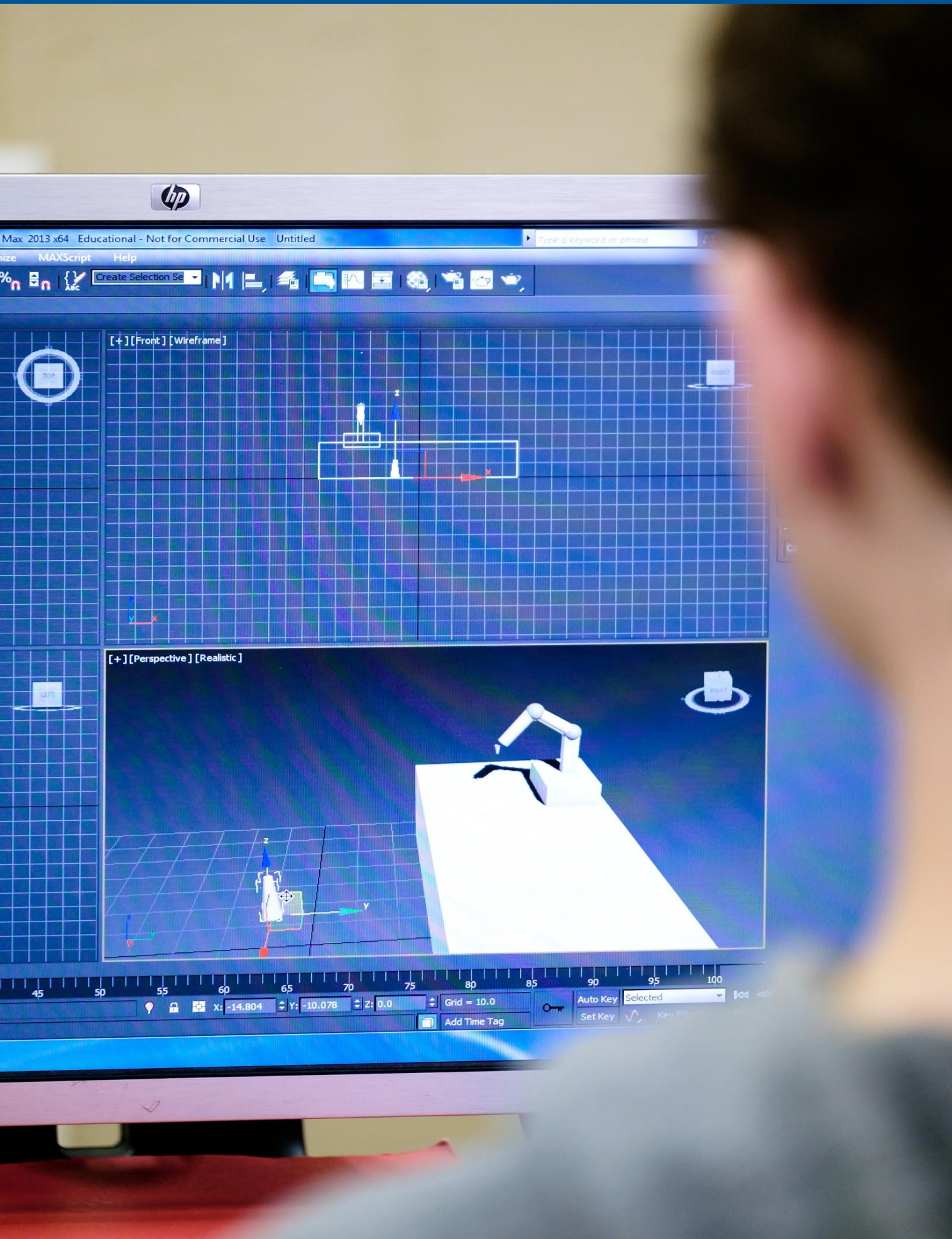


2021-2022 Registration Data by Area

Virtual Academy Students by WCSS Area

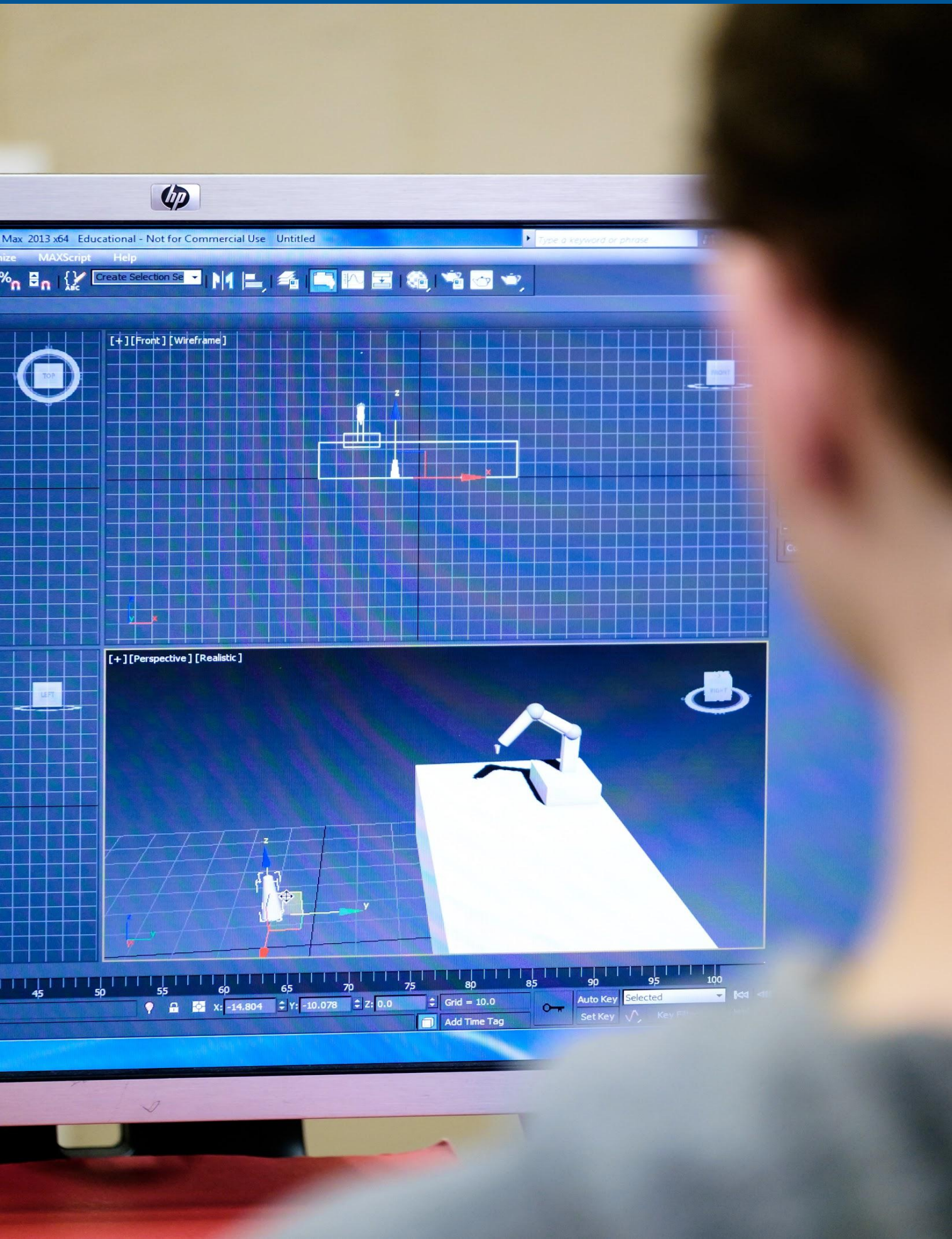


Program Structure & Instructional Design



- The Virtual Academy will remain as a program within a school for next year with additional centralized curricular and structural supports to enhance consistency of instructional delivery and student experience.
- Classes and course options in 2021-2022 will include standards aligned instructional content and social/emotional support across all K-12 grade levels.
- Students will experience an intentional effort on the part of their school's staff to make meaningful connections and to create a true classroom community.
- Supports and services for AIG, ESL, Intervention, 504 Plans, IEPs, etc. will be provided by the student's assigned school.

Course Offerings



- K-8 and high school core courses, including accelerated courses, required for graduation and conducive to a virtual learning environment will be offered.
- Select elective courses will be offered.
- Due to the uniqueness of each individual magnet program/theme, students who elect to participate in the Virtual Academy in the 2021-22 school year may not be guaranteed the full magnet program offered for the theme of their assigned magnet school.
- To the degree possible, students will be assigned teachers from their current school. However, in most cases, students may be assigned to teachers from different schools within the district to form classes/courses.



Scheduling Process

Based on Virtual Academy registration data, schools have completed the following steps.



Step One

Schedule School-Based VA Classes/Courses

Step Two

Identify District Support for VA Classes/Courses



Scheduling Process

Elementary



Area Superintendents are working with principals within an area and across areas to creatively schedule VA students and efficiently maximize staffing resources.

Secondary



District VA team is working with principals by calendar or course schedule to creatively schedule VA students and efficiently maximize staffing resources.

Virtual Academy Registration Commitment



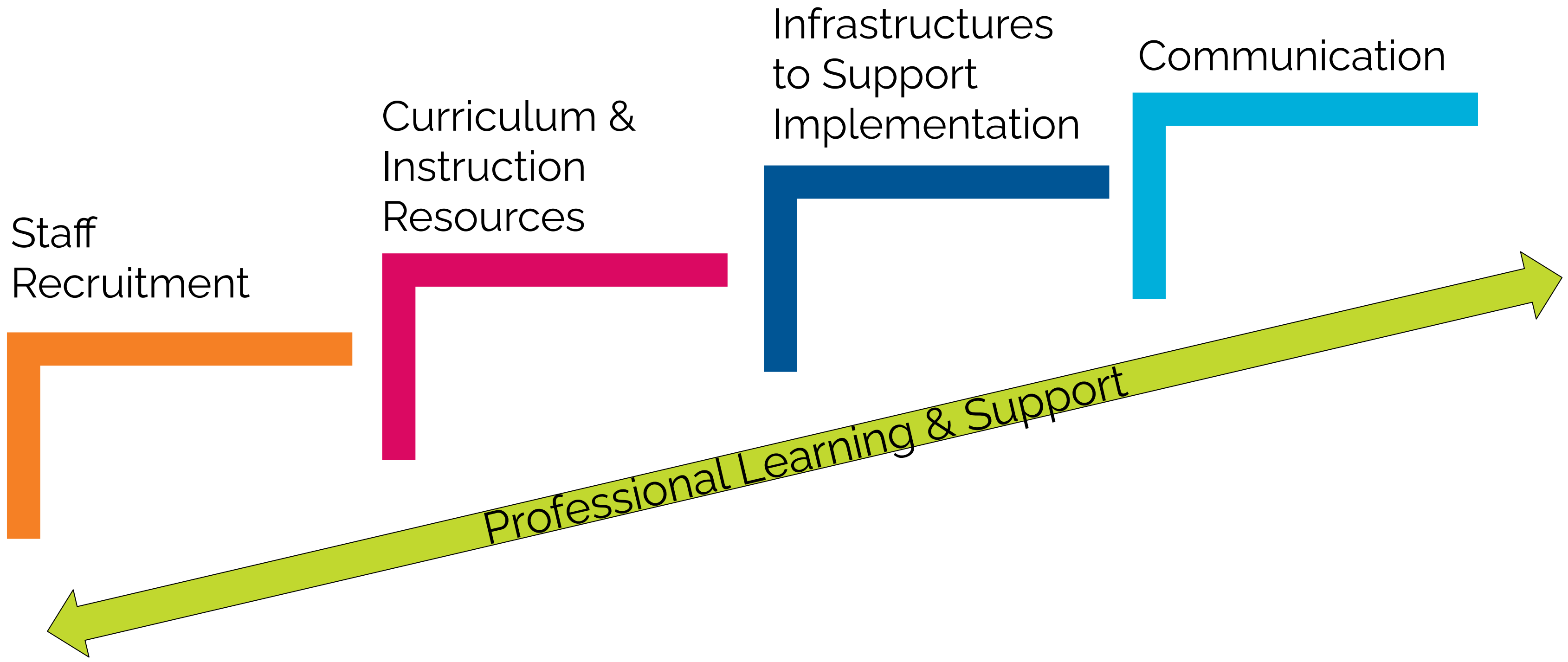
- Registered families have committed to the entire 21-22 school year.
- This commitment cannot be changed unless vaccines become widely available for all children. The district will reassess the required one-year commitment at the semester break.
- New enrollees to WCPSS can request the Virtual Academy. The school will assess and assign courses/classes based on seat availability and in collaboration with the district.



Professional Learning and Orientation

- Professional learning will be provided for VA teachers, and will include:
 - Building Classroom Culture.
 - Instructional Practices in the Virtual Learning Environment.
 - Canvas as the Learning Management System.
- A virtual, self-paced orientation, provided by the district will be completed by staff, students and families during the first week of school.
- Professional Learning Teams (PLTs) will be created for VA teachers to strengthen their practice and increase student results.

Planned Action Steps





Key Factor for Planning

SB 654
Legislation

Dialogue and Questions

WHAT   
STARTS
 HERE
CHANGES
 EVERYTHING.