

Trailers - 101

September 15, 2021

Jacqueline B. Ellis, Chief of Schools

Cecil Bell, Senior Director Risk Management

Glenn Carrozza, Senior Director Office of Student Assignment

Clint Council, Director Construction Management

Marcella S. Rorie, Senior Director Long Range Planning

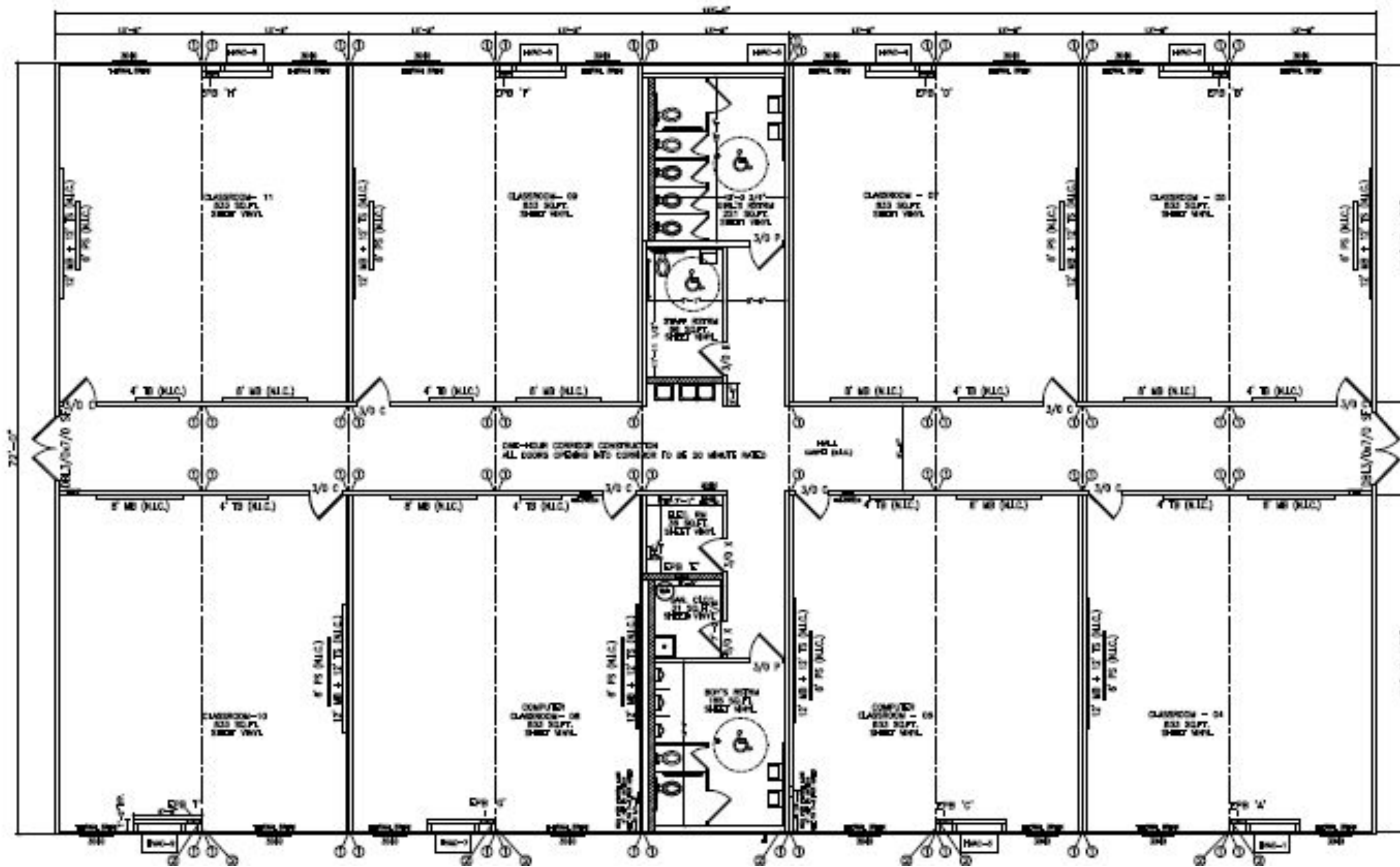
Nate Slavik, Senior Director Maintenance & Operations



Objectives

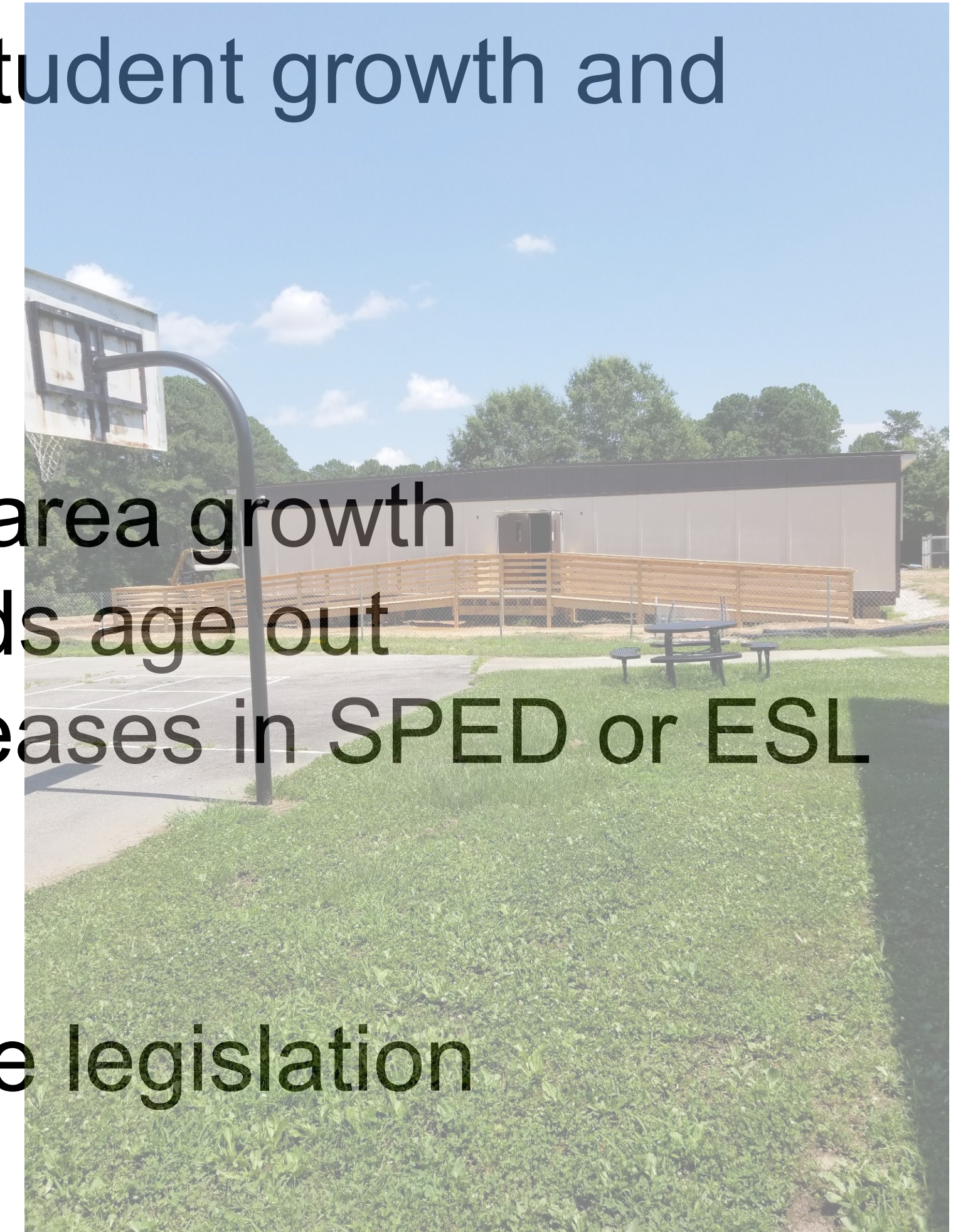
- 1 Define what constitutes a trailer/modular
- 2 Define the purpose of trailers
- 3 Discuss the trailer move process and master plan
- 4 Discuss trailer length of service, condition and maintenance
- 5 Discuss CIP Funding and Planning Assumptions guideline
- 6 Share an update on the cost & time of trailer placement

What is a Trailer, how are they used, etc...?



- Popular names: trailers, modulars, cottages, learning labs, QC Shacks, etc...
- Uses: Capacity & Non-capacity teaching spaces, toilet facilities, administrative and cafeteria facilities, and transportation offices.

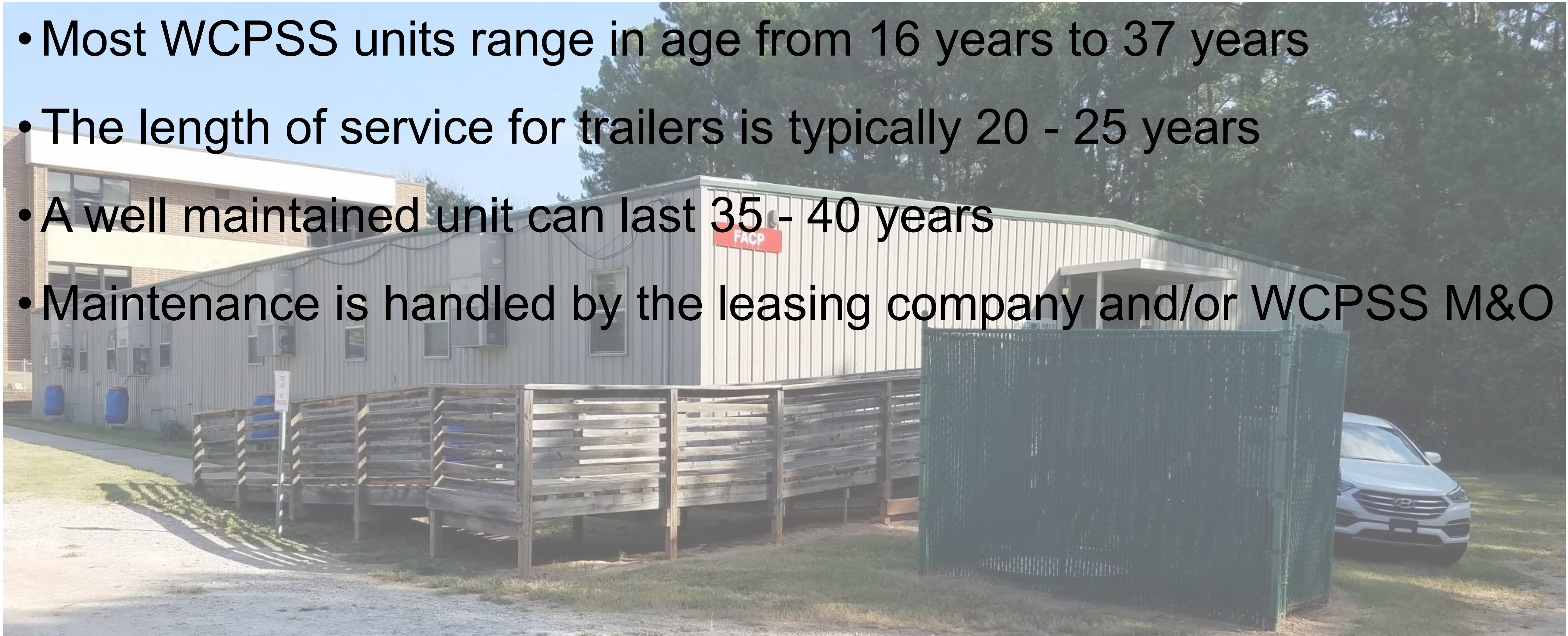
- Trailers are used to support the fluctuation in student growth and academic program changes
- Trailers increase the flexibility needed to:
 - increase a school's capacity to accommodate area growth
 - reduce a school's capacity when neighborhoods age out
 - accommodate changes in student needs (increases in SPED or ESL student populations)
- Trailers helped us to meet the HB 90 Class size legislation requirements



The adopted criteria for determining the number of trailers to support the fluctuation in student growth, and academic program changes considers whether:

- The trailers can physically be accommodated on the site
- Are they permissible by the AHJ and by zoning, etc...
- Can the capacity in the units be supported by dining room facilities with no more than 3 seatings based on DPI Guidelines
- Can the units be accommodated within 300 feet of the closest building access point
- Can the units be supported by specialized educational program spaces like CTE, science, gym, etc...
- Can they be supported by vehicle traffic patterns

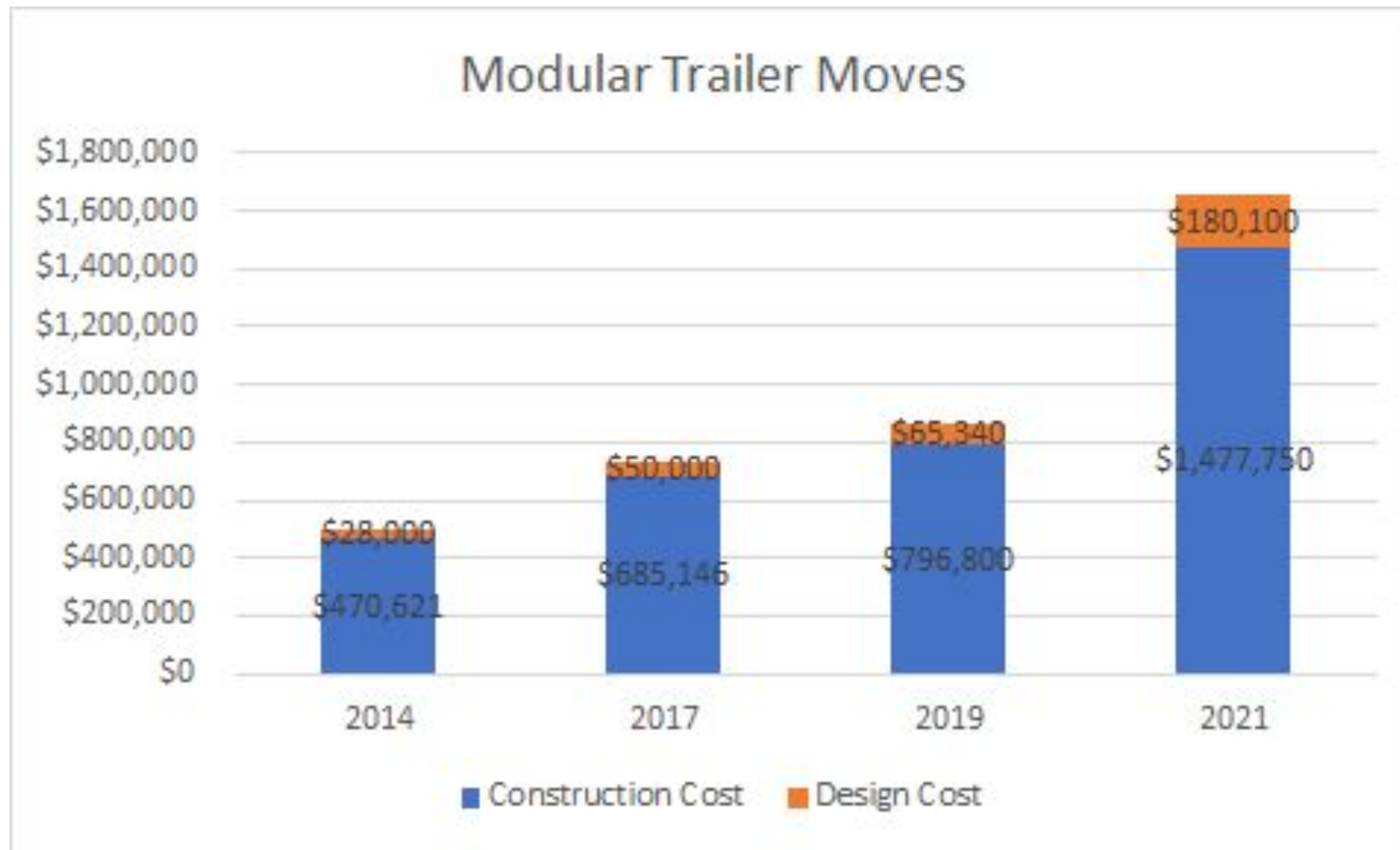
- Most WCPSS units range in age from 16 years to 37 years
- The length of service for trailers is typically 20 - 25 years
- A well maintained unit can last 35 - 40 years
- Maintenance is handled by the leasing company and/or WCPSS M&O



CIP Funding and Planning Assumptions

School	FY22 \$M	FY23 \$M	FY24 \$M	FY25 \$M	FY26 \$M	FY27 \$M	FY28 \$M
4							
5							
9	Woods Creek ES (E51)	51.5					
10	Hilltop Needmore ES (E44)	46.9					
11	Fuquay Varina MS (M15)	44.5	35.4				
12	E-52		48.9				
13	Felton Grove HS (H12)	84.4	60.0				
14	E-53	3.5		51.0			
15	ES (TBD)	3.5		51.0			
16	RTP MS 19/HS 11	-		73.2	50.0		
17	HS 15 (Capital Blvd Site)	4.5			67.8		
18	MS 12		6.6	-	36.7	50.0	
19	HS 3			8.0		90.0	58.8
20	ES (TBD)			5.0		54.2	
21	ES (TBD)				5.5		58.0
22	ES (TBD)				5.5		58.0
23	ES (TBD)					6.0	
24	New School Totals	238.9	150.9	188.3	165.5	140.0	119.0
25							
28	Swift Creek ES		49.4				
30	Baucorn ES		42.7				
31	ES Reno 1			11.2		50.0	
32	ES Reno 2			5.5	-	55.7	
33	ES Reno 3			-	5.5	-	55.6
34	Reno TBD				7.3	-	60.0
35	Existing School Totals	-	92.1	16.7	12.8	105.7	55.6
36							
37							
38	Life CY Building	18.7	20.5	35.0	40.0	45.0	46.4
39	Life CY Furniture	2.1	2.1	2.2	2.2	2.3	2.4
40	Ed Equipment	2.6	2.7	3.8	3.9	4.0	4.2
41	Enviro/ADA	-	-	1.2	1.2	1.2	1.3
42	Tech Devices	19.3	20.0	25.7	26.5	27.3	28.1
43	Tech Infrastructure	6.6	6.8	7.0	7.1	7.4	7.6
44	Security	8.1	4.8	4.9	5.0	5.2	5.4
45	Temp Classrooms	2.7	2.8	2.9	3.0	3.1	3.2
46	Assessments	0.5	0.6	0.6	0.6	0.6	0.7

- Where possible, standard core facilities are designed to accommodate:
 - 4 trailers ES
 - 6 trailers at MS and HS
- Our current CIP Funding for trailer moves (Temp Classrooms) is ~ \$2.7M - \$3.2M annually through Fiscal Year 2028.



- In 2021 it cost \$1.48M to move a 7 classroom trailer unit.
- It takes ~ 1 year from the start of a trailer placement request, until the time of occupancy.

Questions?

