

DRAFT 2

WCPSS ENROLLMENT PLAN

2022-2023

A MULTI-YEAR APPROACH TO GROWTH MANAGEMENT

Prepared by: Office of Student Assignment

Board of Education Work Session
November 16, 2021

Feedback collected

- Online feedback has been collected at:
 - wcpss.granicusideas.com
- Virtual Public Meetings were held on:
 - October 20
 - October 21
 - October 28
 - November 1

New School – Barton Pond Elementary School (opening August 2022)

- Traditional Calendar
- Capacity: 616
- Year-Round Application School: **Brier Creek Elementary**
- Impacted Schools: Baileywick Elementary, Hilburn Drive Academy, Jeffreys Grove Elementary, Lead Mine Elementary, Leesville Road Elementary, Lynn Road Elementary, Sycamore Creek Elementary, Underwood Elementary and York Elementary

• Current status:

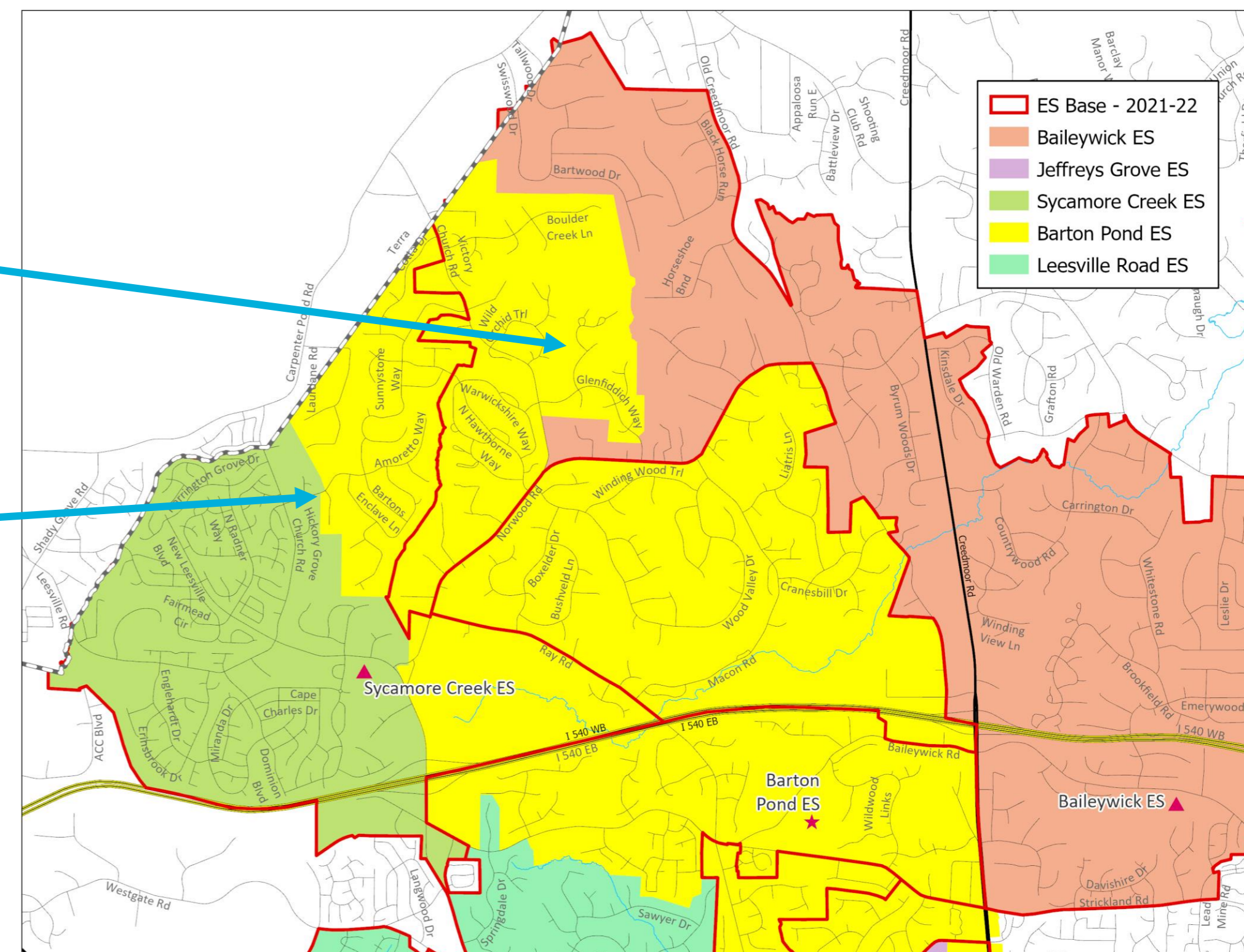
2021-22 Base School	Calendar	Capacity w/ Trailers	2020-21 ADM	2020-21 Util w/ Trl
Baileywick ES	T	410	360	88%
Hilburn Dr Academy (K-5)	T	444	450	101%
Jeffreys Grove ES	T	470	522	111%
Leesville Rd ES	T	728	633	87%
Lead Mine ES	T	430	460	107%
Lynn Rd ES	T	528	499	95%
Sycamore Creek ES	Y	924	987	107%
Underwood ES	T	410	424	103%
York ES	T	508	429	84%

- Y – Year-Round Calendar, All Tracks (1-4)
- Y4 – Year-Round Calendar, Track 4 Only
- T – Traditional Calendar
- Base % = Percentage of WCPSS students within base attending the base school
- Util = Utilization based on 2021-22 capacity, 8/11/2021
- Util w/ Trl = Utilization with Trailers

Barton Pond Elementary School

Changes for Draft 2:

- Split neighborhood (Hawthorne)
Baileywick ES base move to Barton Pond ES
- Split neighborhood (Bartons Creek Bluff)
Sycamore Creek ES base move to Barton Pond ES



Proposed Base Areas

Barton Pond Elementary School

2021-22 Base School	Calendar	Capacity w/ Trailers	2022-23 Util w/ Trl	2024-25 Util w/ Trl
Baileywick ES	T	410	88%	84%
Hilburn Dr Academy (K-5)	T	444	103%	99%
Jeffreys Grove ES	T	470	109%	100%
Leesville Rd ES	T	728	88%	86%
Lead Mine ES	T	430	100%	92%
Lynn Rd ES	T	528	97%	91%
Sycamore Creek ES	Y	924	104%	98%
Underwood ES	T	410	96%	90%
York ES	T	508	85%	82%
Barton Pond ES				

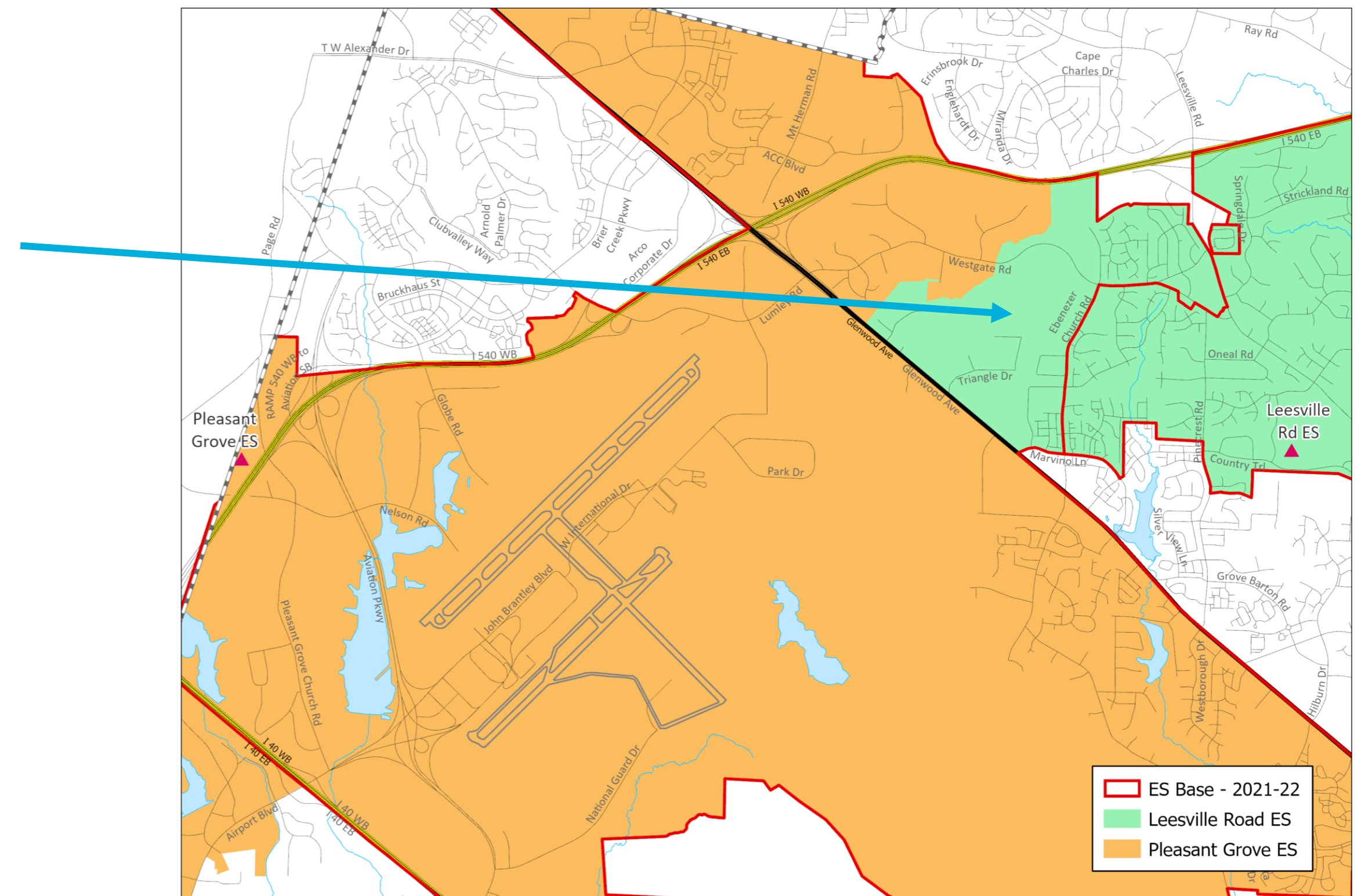
2022-23 Base School	Calendar	Capacity w/ Trailers	2022-23 Util w/ Trl	2024-25 Util w/ Trl
Baileywick ES	T	410	80%	75%
Hilburn Dr Academy (K-5)	T	444	100%	96%
Jeffreys Grove ES	T	470	94%	86%
Leesville Rd ES	T	728	78%	79%
Lead Mine ES	T	430	89%	82%
Lynn Rd ES	T	528	92%	85%
Sycamore Creek ES	Y	924	94%	88%
Underwood ES	T	410	94%	88%
York ES	T	508	77%	74%
Barton Pond ES	T	616	78%	75%

- Y – Year-Round Calendar, All Tracks (1-4)
- Y4 – Year-Round Calendar, Track 4 Only
- T – Traditional Calendar
- Base % = Percentage of WCPSS students within base attending the base school
- Util = Utilization based on 2021-22 capacity, 8/11/2021
- Util w/ Trl = Utilization with Trailers

Leesville Road Elementary School

Change for Draft 2:

- Including remaining residential area
- Pleasant Grove ES base move to Leesville Road ES



Proposed Base Areas

Leesville Road Elementary School

2021-22 Base School	Calendar	Capacity w/ Trailers	2022-23 Util w/ Trl	2024-25 Util w/ Trl
Leesville Rd ES	T	728	88%	86%
Pleasant Grove ES	T	616	96%	92%

2022-23 Base School	Calendar	Capacity w/ Trailers	2022-23 Util w/ Trl	2024-25 Util w/ Trl
Leesville Rd ES	T	728	78%	79%
Pleasant Grove ES	T	616	100%	97%

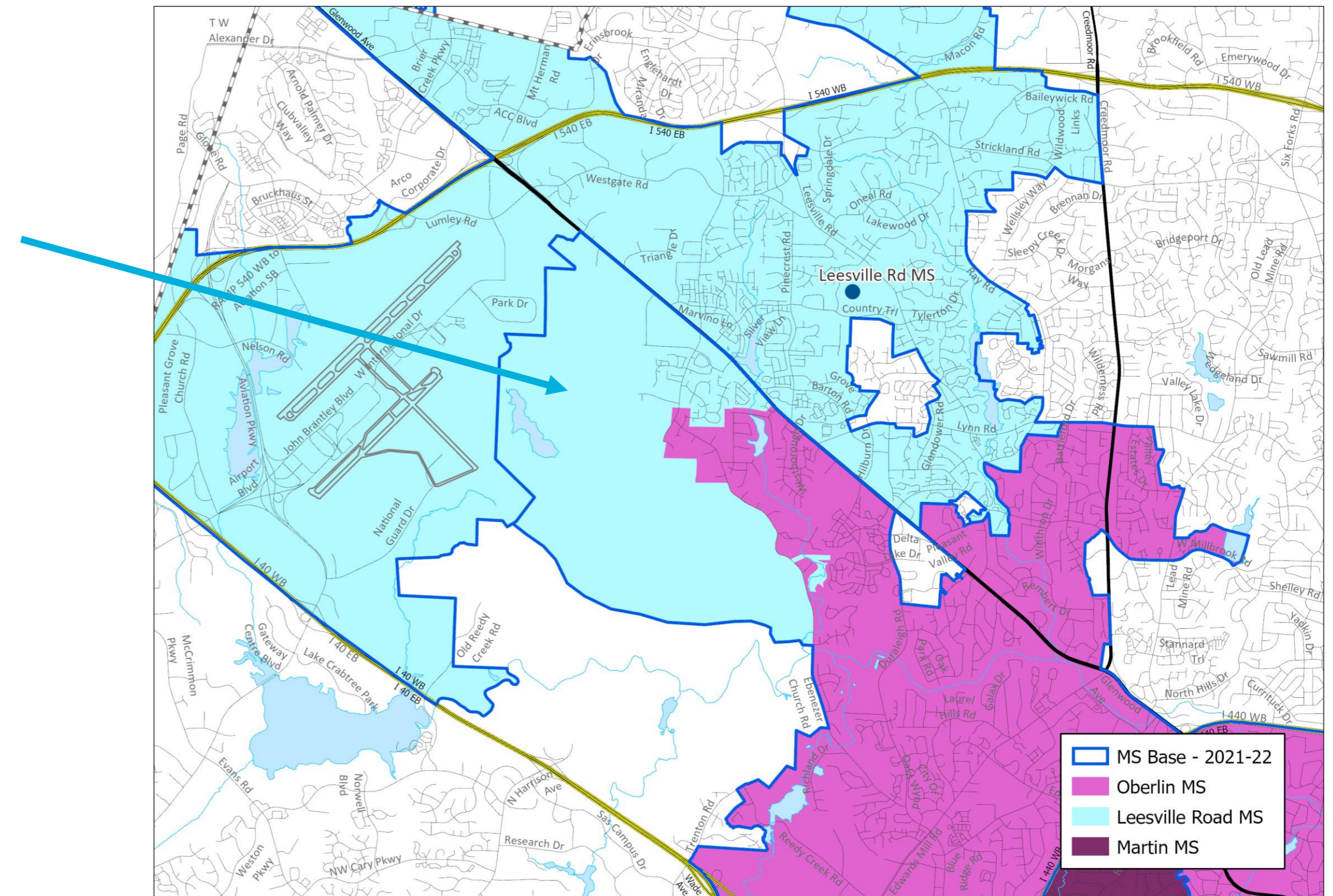
- Y – Year-Round Calendar, All Tracks (1-4)
- Y4 – Year-Round Calendar, Track 4 Only
- T – Traditional Calendar
- Base % = Percentage of WCPSS students within base attending the base school
- Util = Utilization based on 2021-22 capacity, 8/11/2021
- Util w/ Trl = Utilization with Trailers

Leesville Road Middle School

Change for Draft 2:

- Umstead Park area

Oberlin MS base move to Leesville Road MS



Proposed Base Areas

Leesville Road Middle School

2021-22 Base School	Calendar	Capacity w/ Trailers	2022-23 Util w/ Trl	2024-25 Util w/ Trl
Oberlin MS	T	1092	113%	108%
Leesville Rd MS	T	1222	68%	65%

2022-23 Base School	Calendar	Capacity w/ Trailers	2022-23 Util w/ Trl	2024-25 Util w/ Trl
Oberlin MS	T	1092	111%	105%
Leesville Rd MS	T	1222	69%	65%

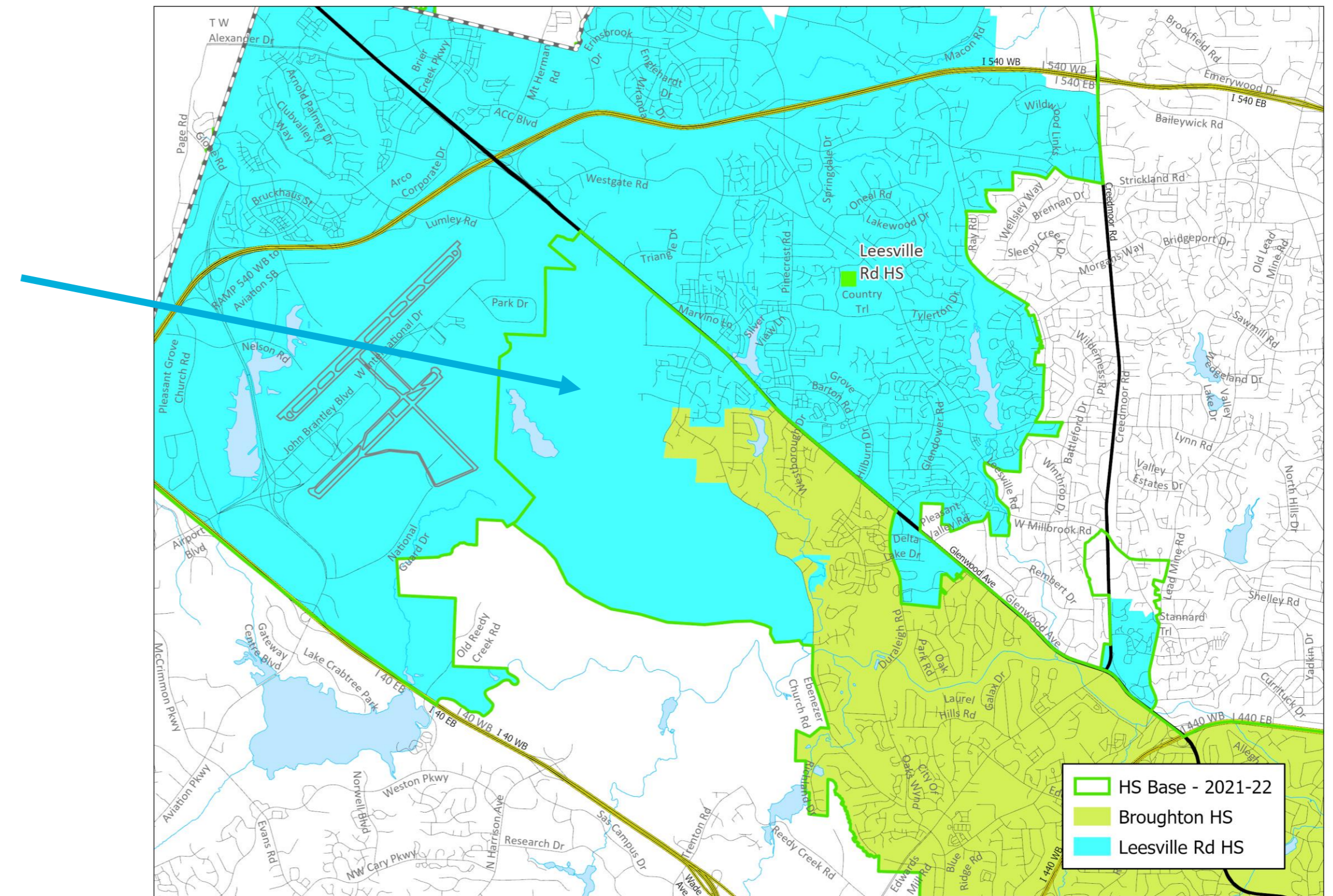
- Y – Year-Round Calendar, All Tracks (1-4)
- Y4 – Year-Round Calendar, Track 4 Only
- T – Traditional Calendar
- Base % = Percentage of WCPSS students within base attending the base school
- Util = Utilization based on 2021-22 capacity, 8/11/2021
- Util w/ Trl = Utilization with Trailers

Leesville Road High School

Change for Draft 2:

- Umstead Park area

Broughton HS base move to Leesville Road HS



Proposed Base Areas

Leesville Road High School

2021-22 Base School	Calendar	Capacity w/ Trailers	2022-23 Util w/ Trl	2024-25 Util w/ Trl
Broughton HS	T	2064	104%	105%
Leesville Rd HS	T	2477	107%	103%

2022-23 Base School	Calendar	Capacity w/ Trailers	2022-23 Util w/ Trl	2024-25 Util w/ Trl
Broughton HS	T	2064	102%	104%
Leesville Rd HS	T	2477	100%	97%

- Y – Year-Round Calendar, All Tracks (1-4)
- Y4 – Year-Round Calendar, Track 4 Only
- T – Traditional Calendar
- Base % = Percentage of WCPSS students within base attending the base school
- Util = Utilization based on 2021-22 capacity, 8/11/2021
- Util w/ Trl = Utilization with Trailers

Calendar Application Area Changes

Base School	Current Calendar Application School #1	Current Calendar Application School #2	Proposed Calendar Application School #1	Proposed Calendar Application School #2	Notes
Abbotts Creek Elementary	Durant Road Elementary	N/A	Durant Road Elementary	Brassfield Elementary	
Fuquay-Varina Middle	*West Lake Middle		*Herbert Akins Middle		*Based on address location
Sycamore Creek Elementary	Pleasant Grove Elementary		*Barton Pond Elementary	*York Elementary	*Based on address location
Wakefield Middle	Durant Road Middle	Heritage Middle	Durant Road Middle	N/A	
Durant Road Elementary	Fox Road Elementary		Fox Road Elementary	Wakefield Elementary	

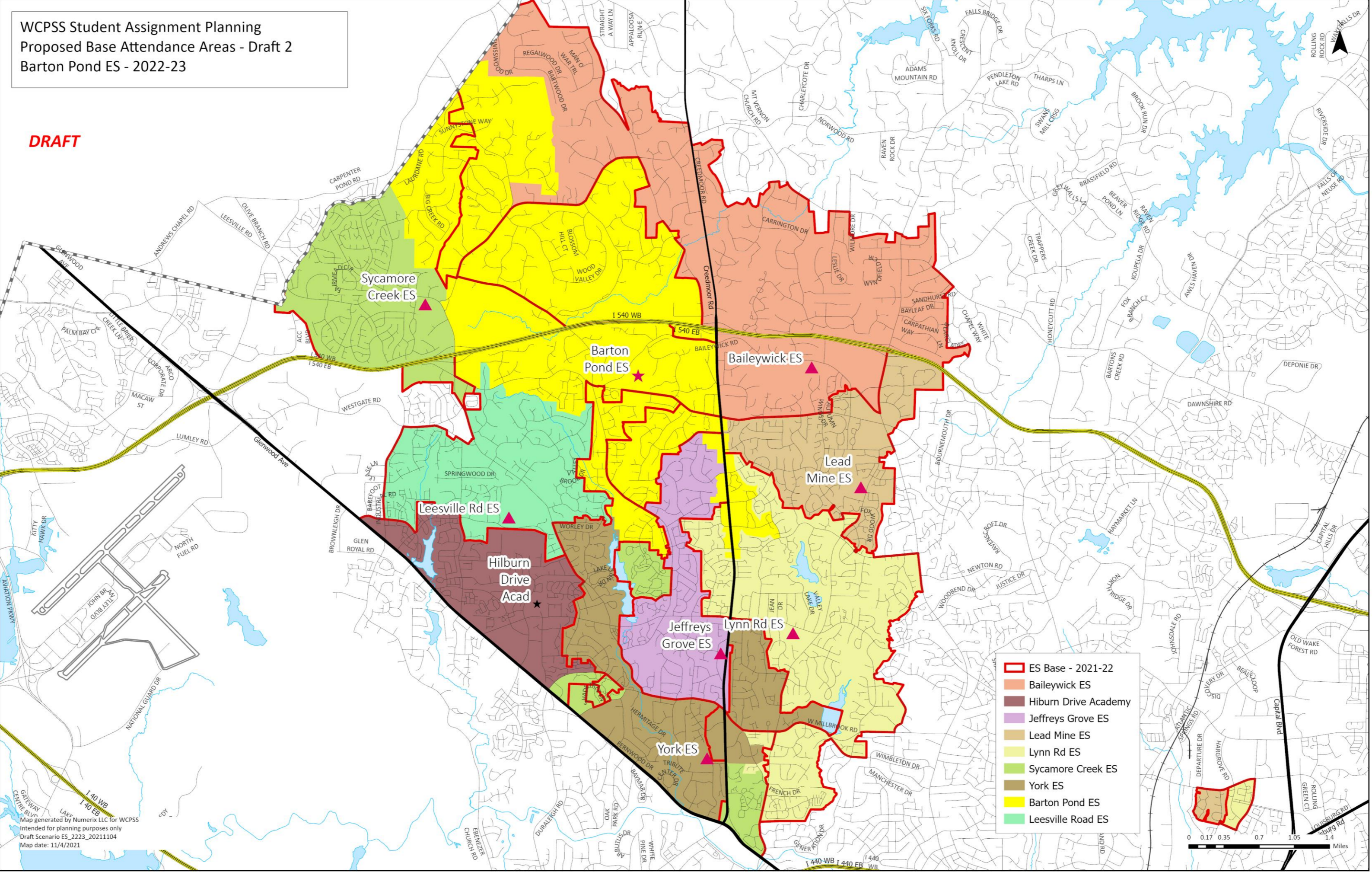
Next Steps

- Staff will continue to collect and review feedback provided online
 - wcpss.granicusideas.com
- Public Hearing on November 30, 2021
- Final Draft presented to the Board on December 7, 2021
 - Staff will seek Board approval during the Board Meeting

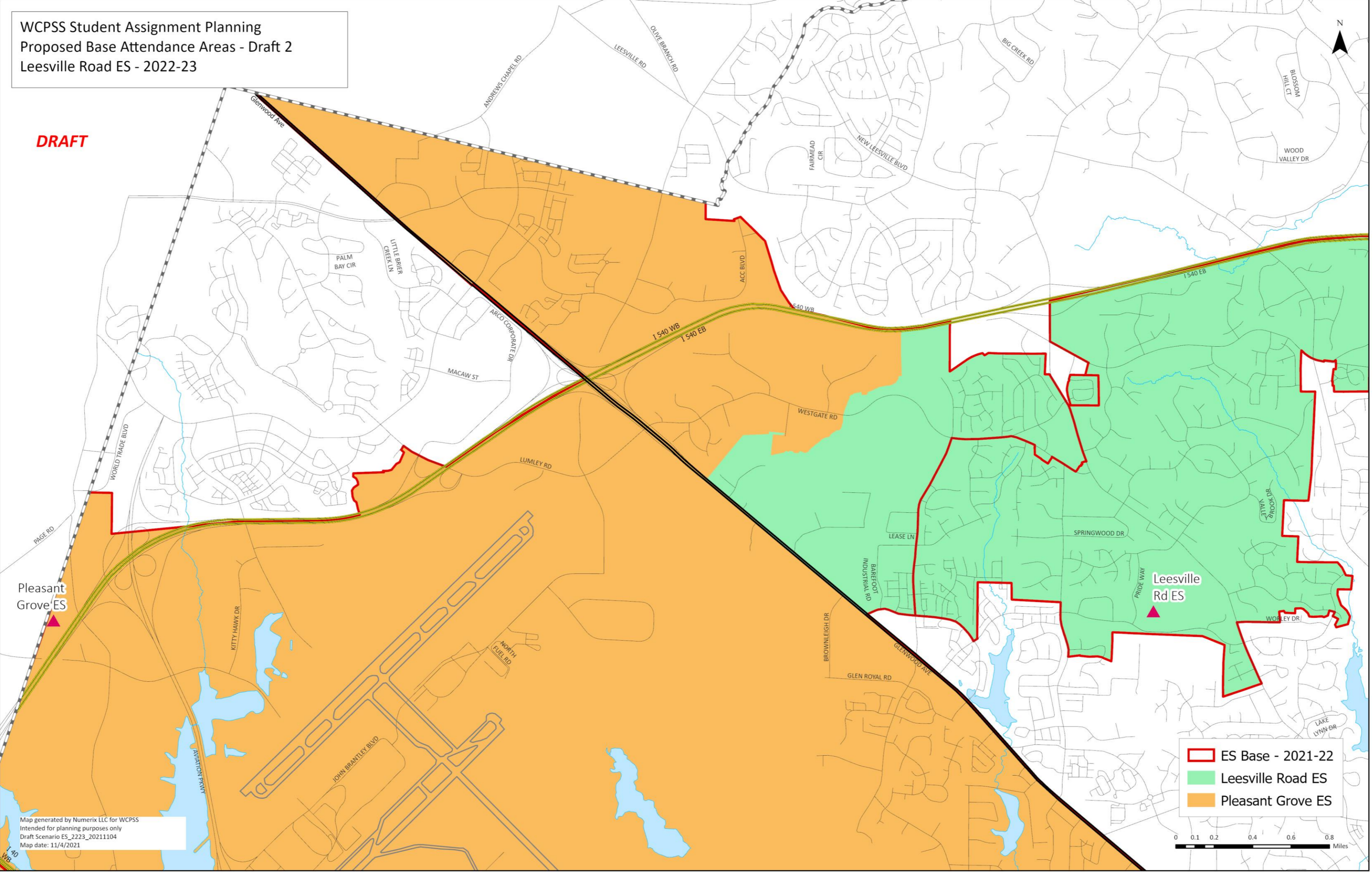
Addendum

- Updated Base Area Detail Maps
- WCPSS Board Policy 4150 details

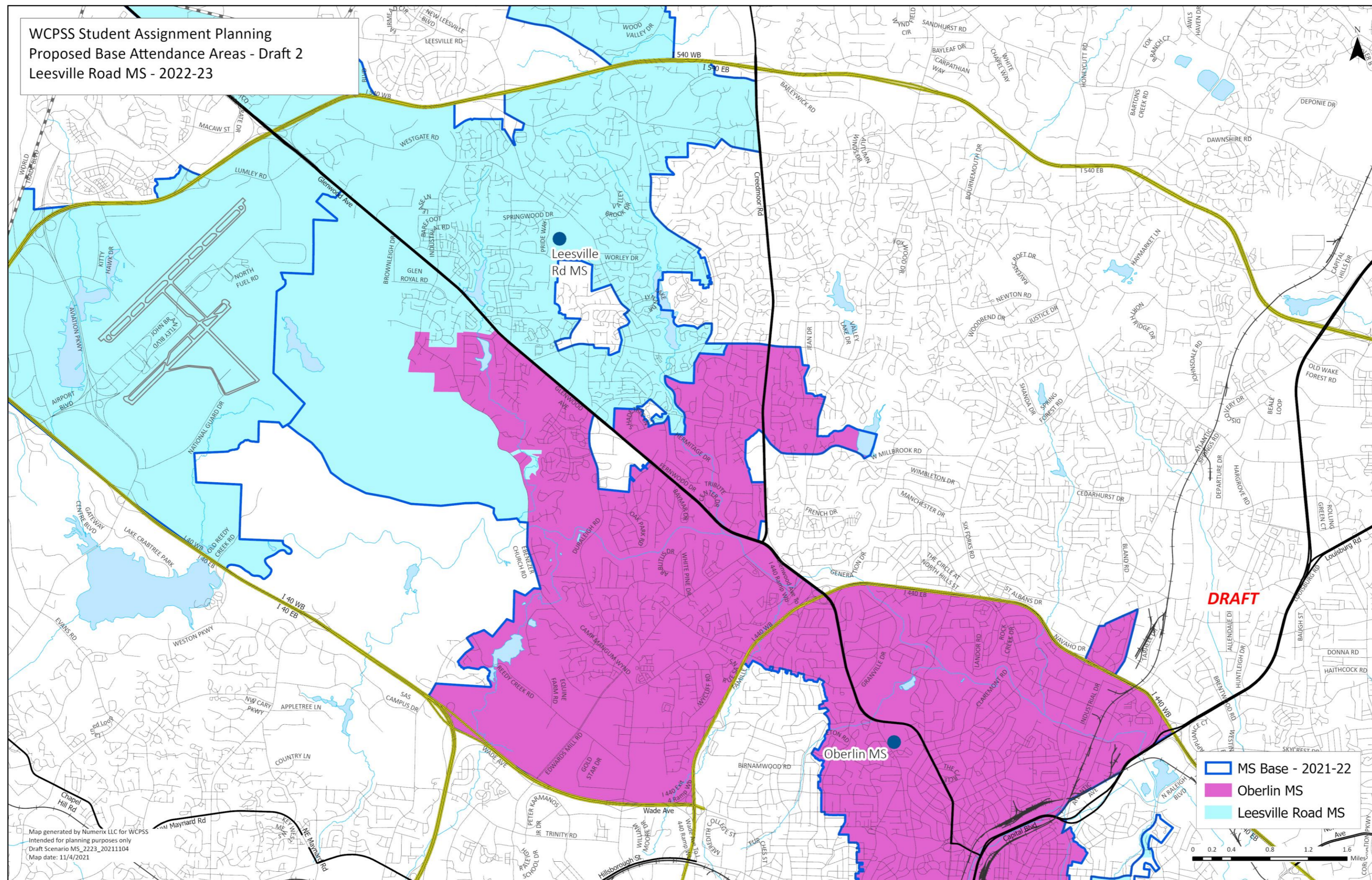
Detail Map: Barton Pond Elementary School



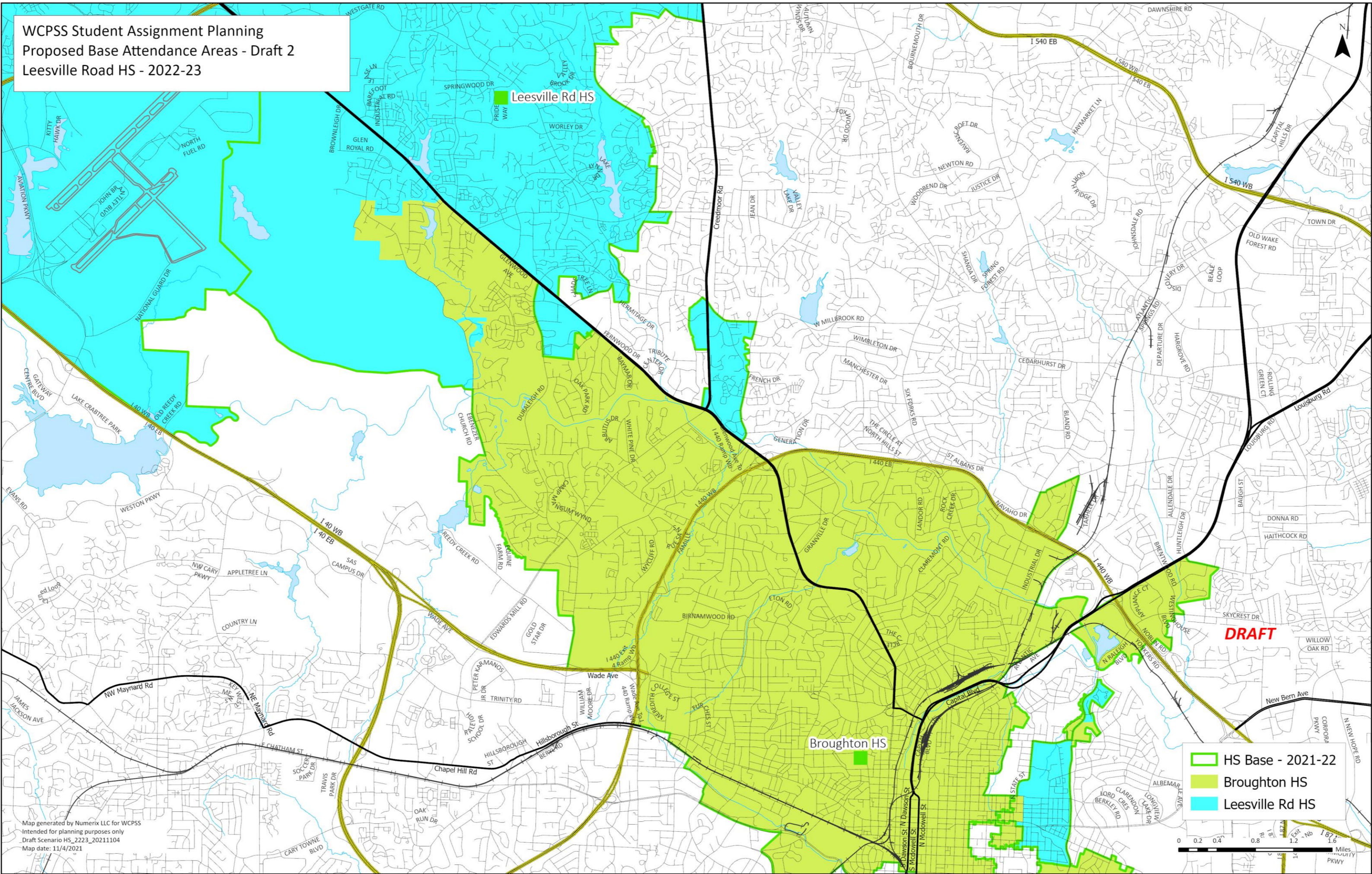
Detail Map: Leesville Road Elementary School



Detail Map: Leesville Road Middle School



Detail Map: Leesville Road High School



WCPSS Board Policy 4150

To the extent practicable, student populations at each school will provide an optimal opportunity for academic success for all students.

To the extent practicable, base school assignments will be within a reasonable distance of the student's home.

To the extent practicable, assignments will optimize the use of school facilities and transportation resources.

a. Student Achievement

Factors for consideration include:

1. providing an opportunity for families to apply to designated application schools;
2. minimizing high concentrations of low-performing students at each school; and
3. minimizing high concentrations of students from low income families at each school.

b. Stability

To the extent practicable, a student who is reassigned will have the opportunity to stay at the current school for one additional year if it is the terminal grade for an elementary or middle school (grades 5 and 8), and the student's siblings will be provided an opportunity to attend the same school for the one year period. The student and siblings must apply for these transfers at the designated time. To the extent practicable, any student currently in high school who is reassigned from an existing school to an existing school will be provided an opportunity to stay at the current school until the terminal grade (grade 12). The student must apply for this transfer at the designated time. Additional opportunities to remain at the current school, including for siblings, may be included in the annual student enrollment plan. A change in domicile does not preserve the previous school assignment. However, Early College and Magnet application assignments are valid through the terminal grade of the school.

c. Proximity

Factors for consideration include:

1. allowing students living within the immediate vicinity of a school, defined by the assignment plan, to attend that school; and
2. minimizing splitting of neighborhoods when developing base attendance areas.

d. Operational Efficiency

Factors for consideration include:

1. minimizing under-enrolled schools;
2. minimizing overcrowded schools; and
3. maximizing transportation efficiencies.”