



# Baucom Elementary School

## DEMOLITION AND REBUILD

### **SCHEMATIC DESIGN – Facilities Committee Meeting**

Mark Strickland, Chief of Facilities + Operations Officer

Elizabeth Sharpe, Director of Planning, FD+C

M. Elizabeth Wakeford, Senior Facility Planner, FD+C

Alice Reese, Senior Site Planner, FD+C

December 15, 2021

# Baucom ES - Guiding Principles



- The new building shall honor the school community's **history** while embracing the **future**.
- The new school shall provide a Campus **identity** that is unique to this school community and reflective of its diversity of cultures while offering a sense of belonging to all students and staff.
- The new school shall function as the center of community taking advantage of **proximity** to promote walking/biking from adjacent neighborhoods.
- The building shall be **connected to the site** through views and space, taking advantage of its natural features and offering opportunities for outdoor learning environments.
- The new school shall provide a clear sense of **circulation** with appropriate **wayfinding**. It shall have a defined main entry that is **welcoming** to visitors while at the same time offering a sense of **security** for students and staff.

# Baucom ES - Project Goals



Maintain the existing tight-knit, neighborhood culture of Baucom ES

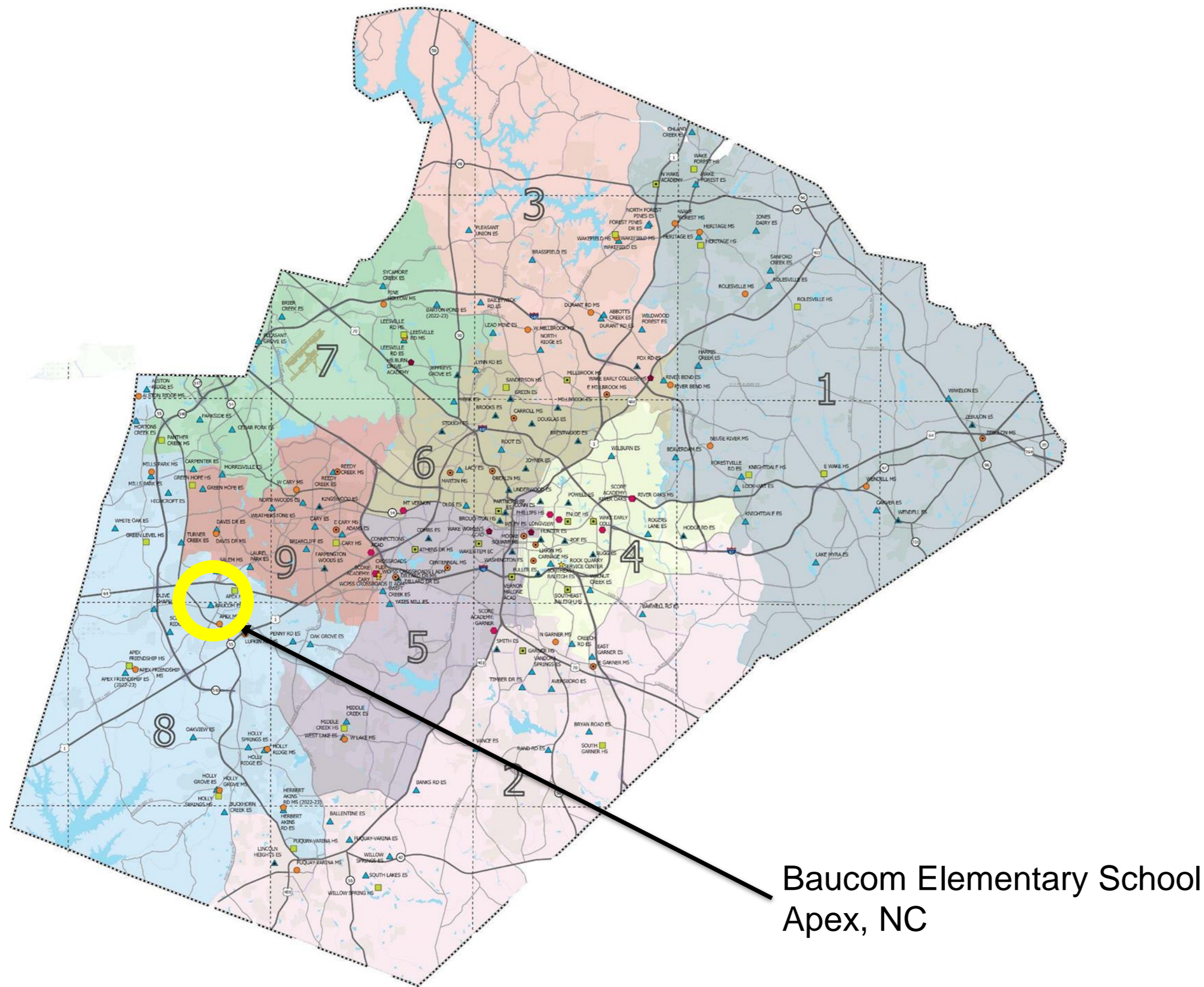


Provide flexibility and choice for collaborative learning spaces

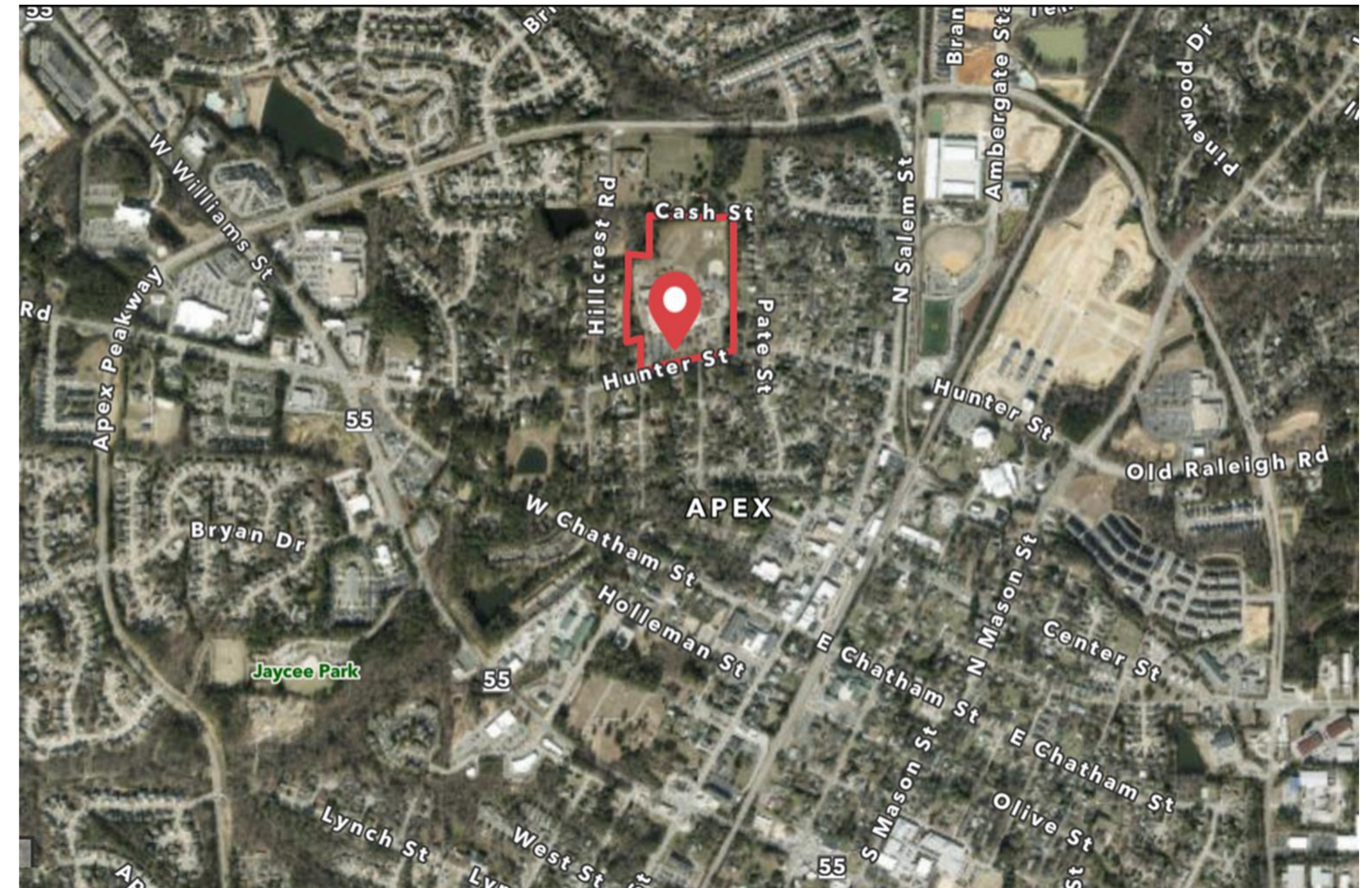


Provide opportunities for interaction with outdoor spaces

# Baucom ES - Vicinity and Site Maps



Location Map



Vicinity Map

# Baucom ES - Proposed Site Plan



## PROGRAM:

- PRE-K PLAY
- K-2 PLAYGROUND
- K-2 PAVED PLAY
- 3-5 PLAYGROUND
- 3-5 PAVED PLAY

## REQUIRED:

- 3200 SF
- 2500 SF
- 3360 SF
- 2500 SF
- 3360 SF

## PROVIDED:

- 3200 SF
- 2500 SF
- 3360 SF
- 2500 SF
- 3360 SF

GRASSY PLAY TOTAL  
SOUTH  
NORTH

156,000 SF

115,201 SF  
36,810 SF  
78,391 SF

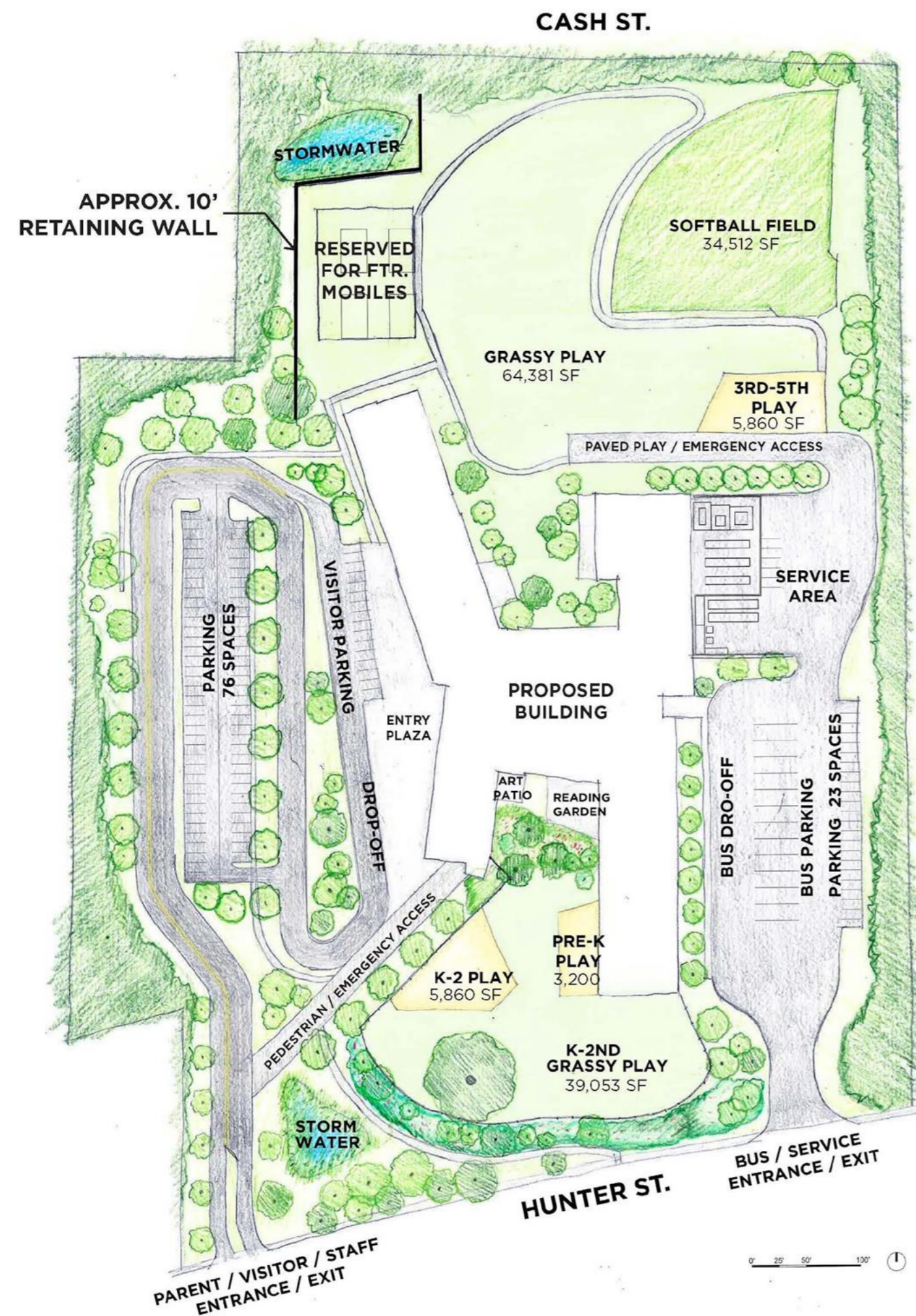
SOFTBALL FIELD TOTAL

34,512 SF

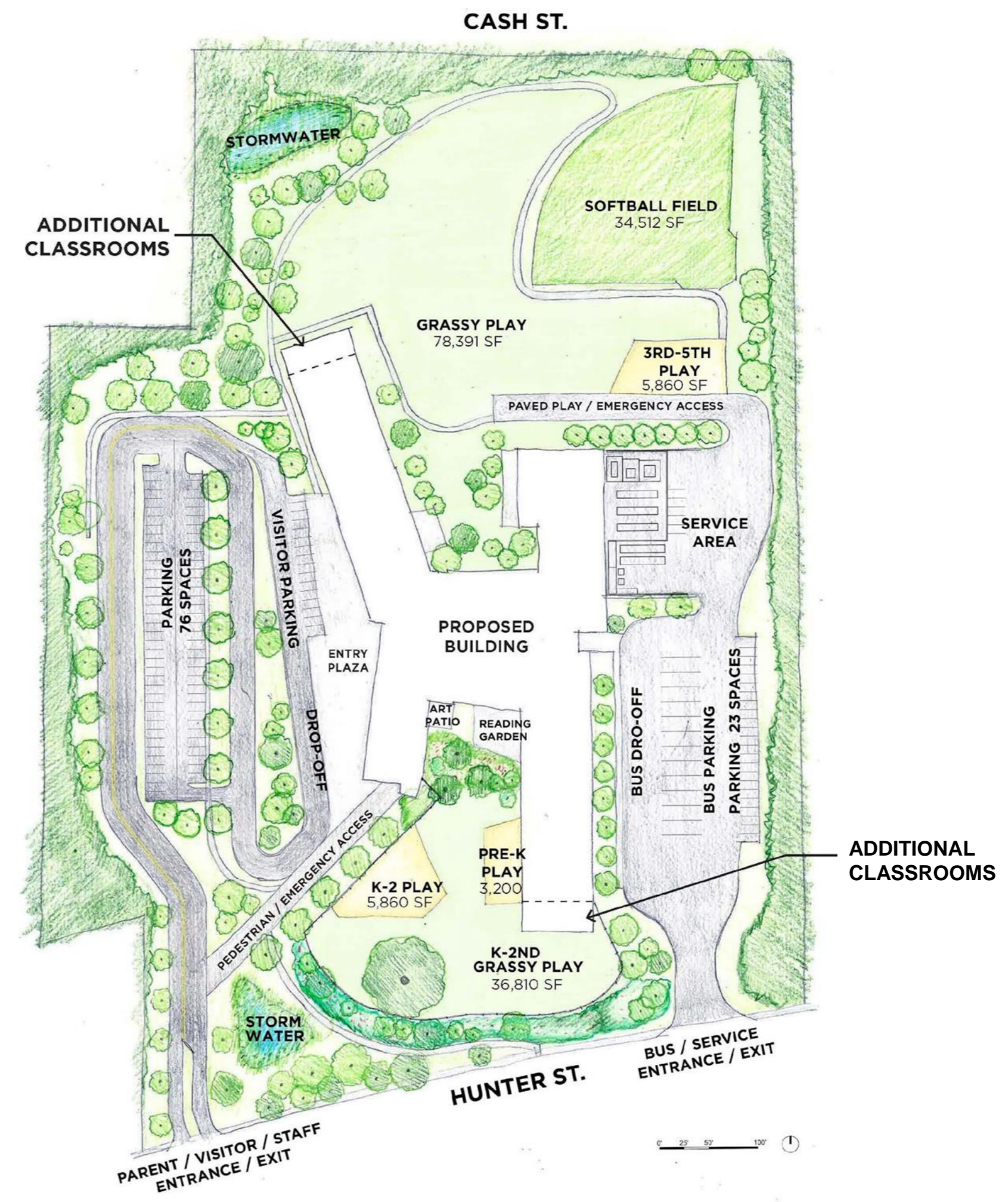
GRASSY PLAY + SOFTBALL FIELD

149,713 SF

# Baucom ES - Comparison of Site with and without Mobiles



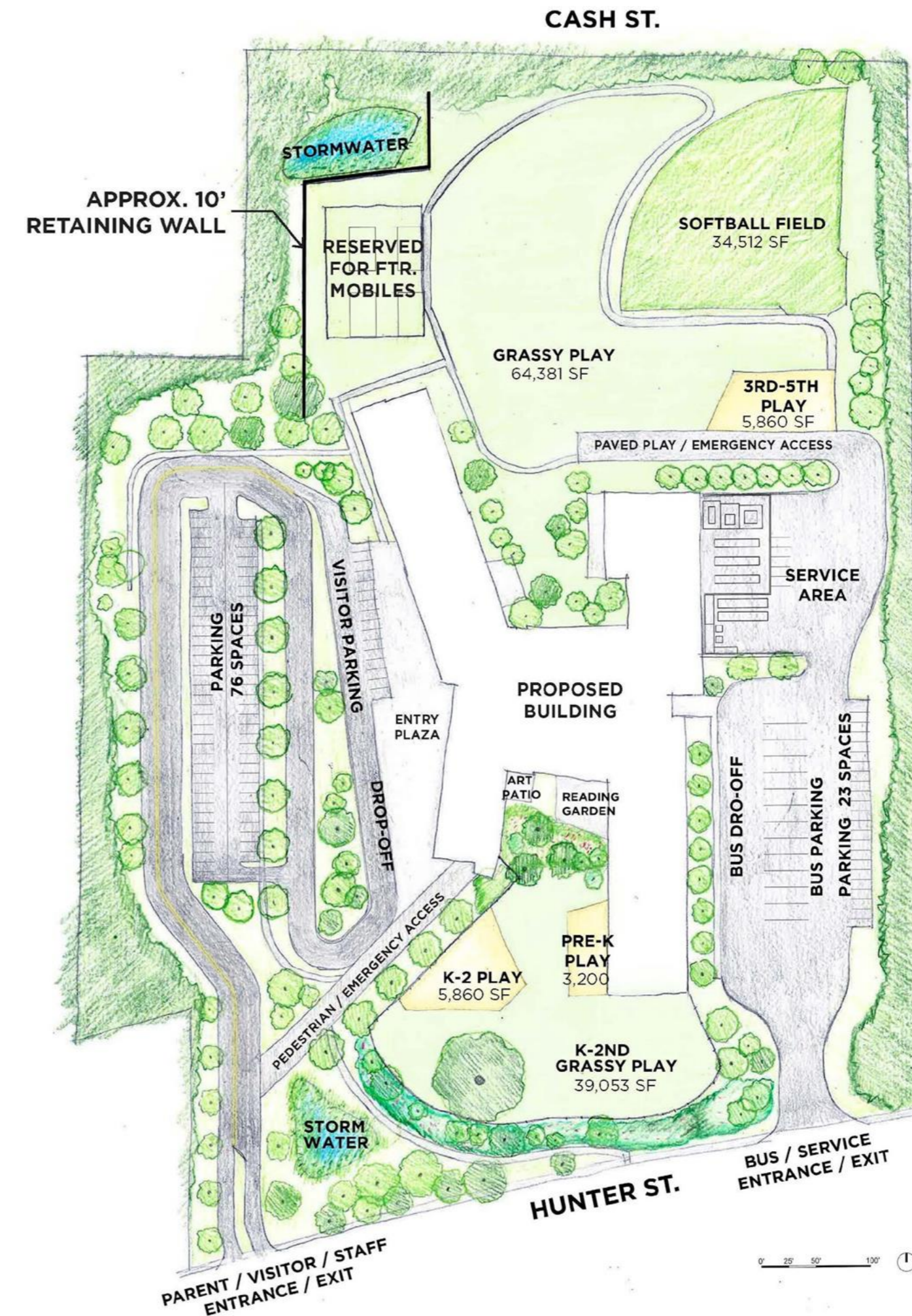
Building Capacity 716  
Core Capacity 800



Building Capacity 800  
Core Capacity 800

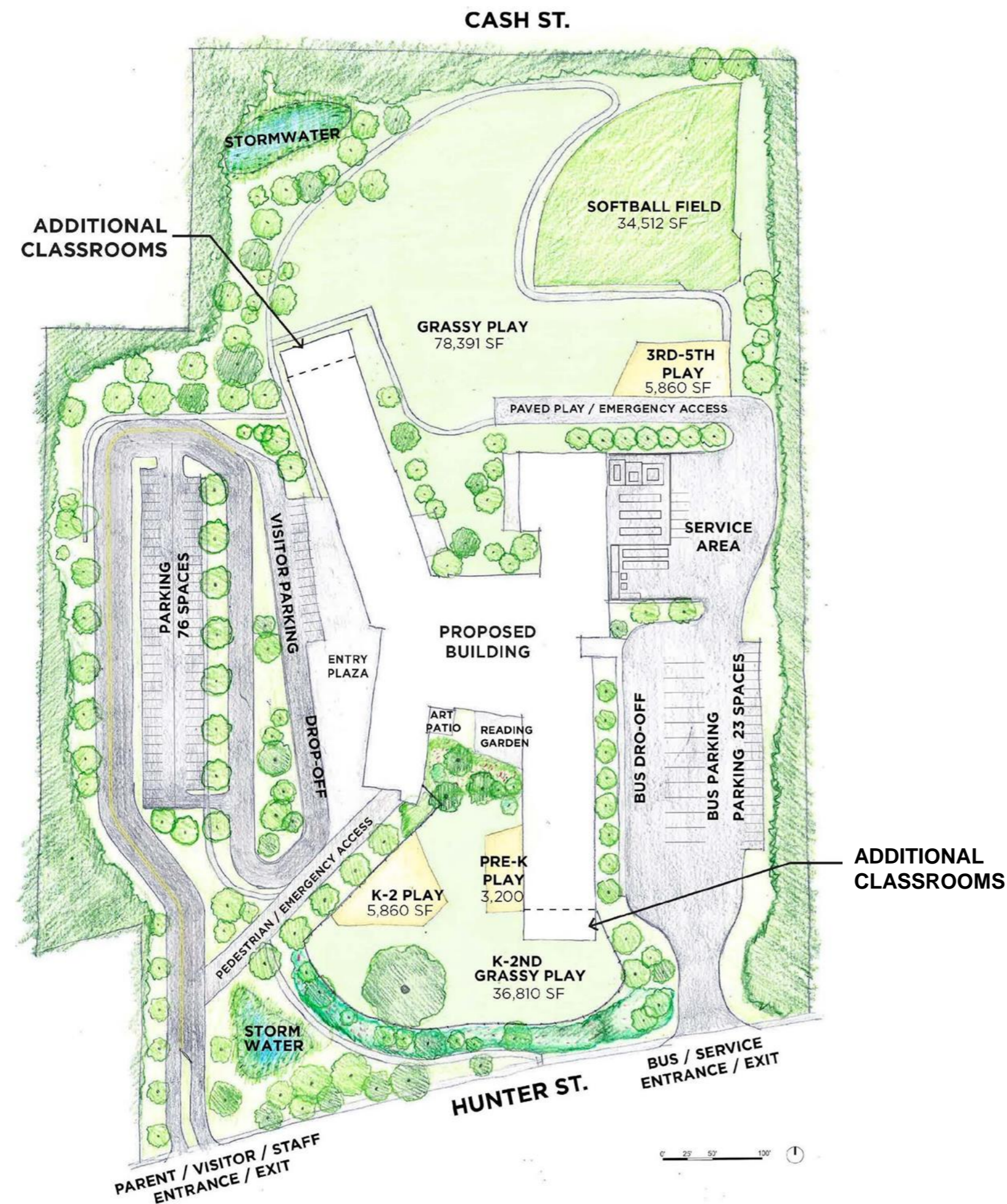
# Baucom ES - Site Impacts with Mobiles

- +/-10' High Retaining wall required
- Decrease in programmed play area
- Closer proximity of classroom space with community use
- High visibility from community uses
- Restrooms located in main building
- Disruption of school activity post construction



Building Capacity 716

# Baucom ES - Recommended Solution to Achieving Core Capacity



Building to Core Capacity of 800

- Opportunity to use topography to support curriculum
- Increase in programmed play area for 3-5 grades
- School Spaces defined by building envelope
- Equity in classroom environments
- Improved Life-cycle costs
- Minimal visual impacts

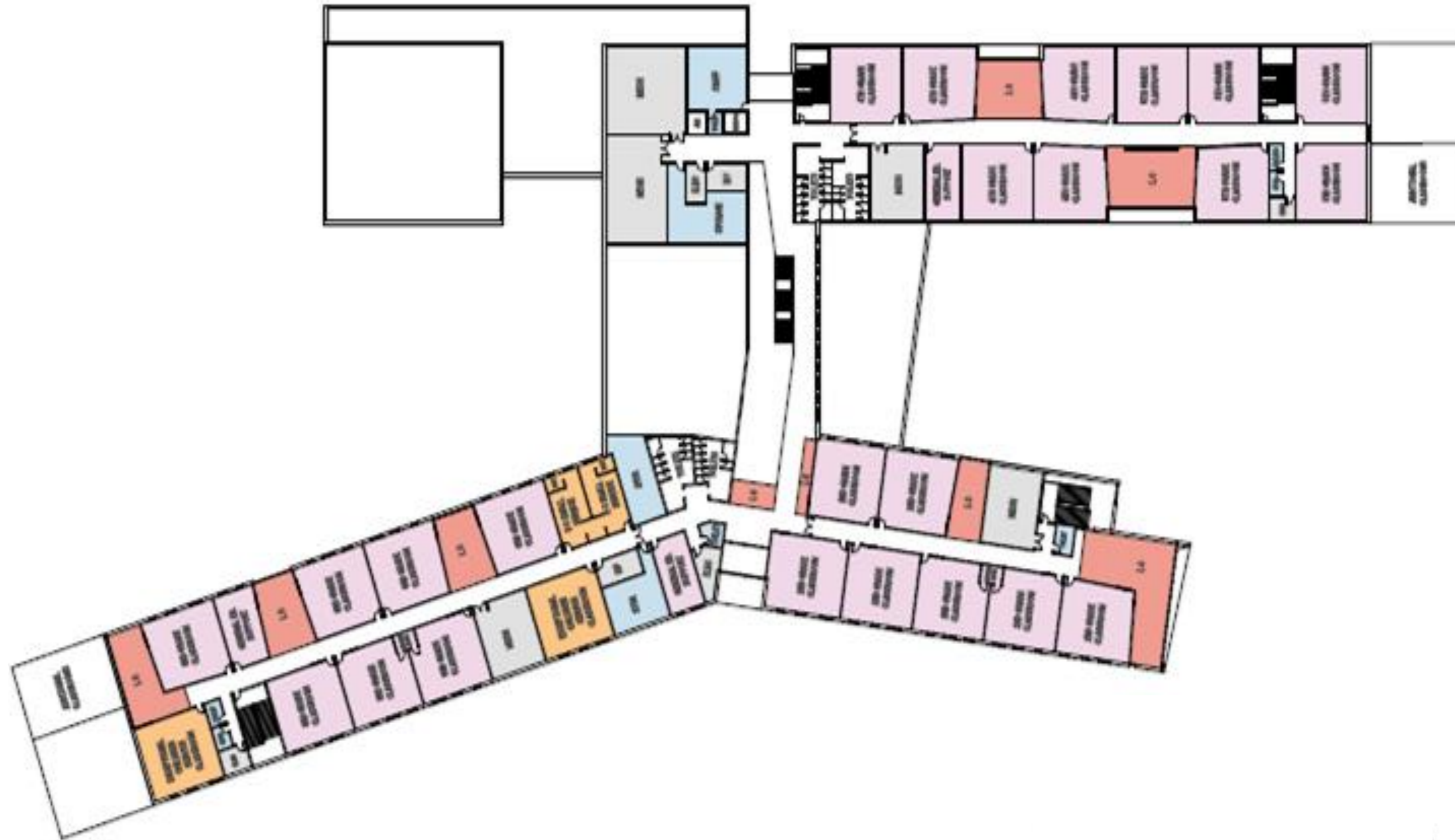
# Baucom ES - Proposed 1st Floor Plan



# Baucom ES - Learning Commons



# Baucom ES - Proposed 2nd Floor Plan



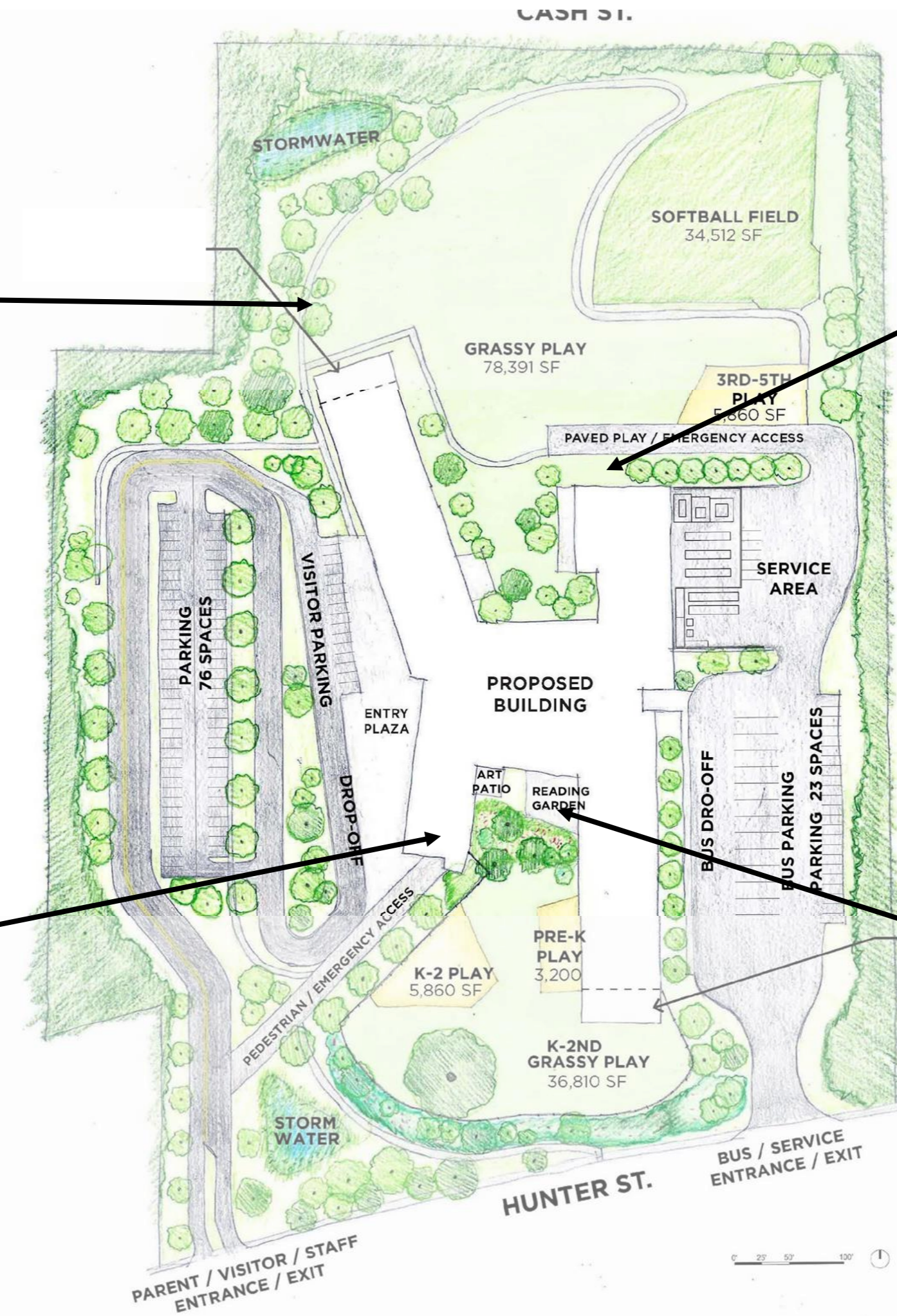
# Baucom ES - Central Corridor



# Baucom ES - Central Corridor



# Baucom ES - Outdoor Learning



**Thank you!**

Questions...