

# School Capping Recommendations

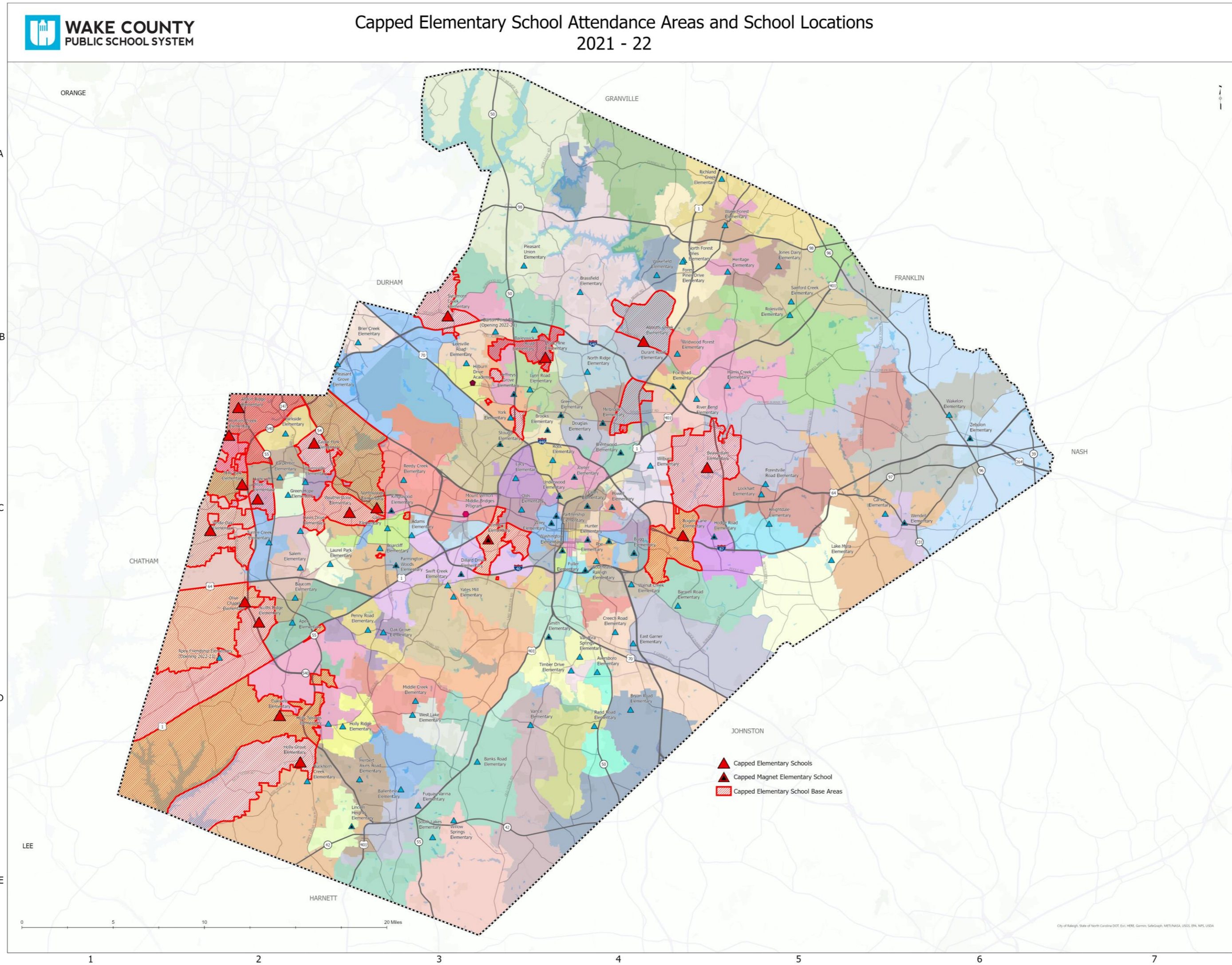
January 19, 2022

Glenn Carrozza, WCPSS Assistant Superintendent for School Choice, Planning and Assignment  
Marcella S. Rorie, Senior Director Long Range Planning

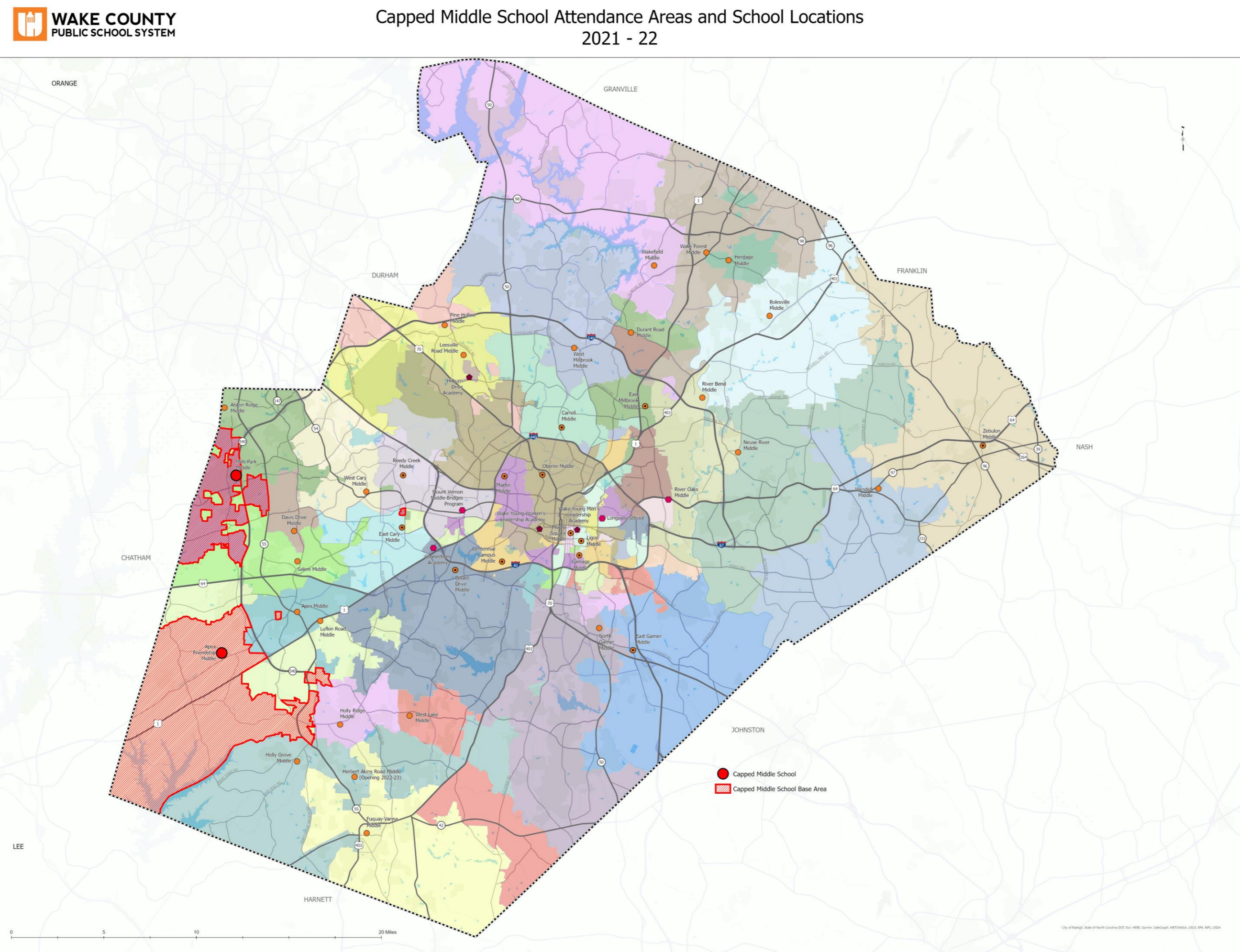
# 2021-22 Capped Schools (18 Elementary, 2 Middle, 3 High)

Elementary		Middle	High
Abbotts Creek	Northwoods	Apex Friendship	Apex Friendship
Alston Ridge (MTYR)	Oakview	Mills Park	Heritage
Beaverdam	Olive Chapel (MTYR)		Panther Creek
Cedar Fork	Rogers Lane		
Combs	Scotts Ridge		
Highcroft Drive	Sycamore Creek		
Holly Grove (MTYR)	Weatherstone		
Hortons Creek	White Oak		
Lead Mine			
Mills Park			

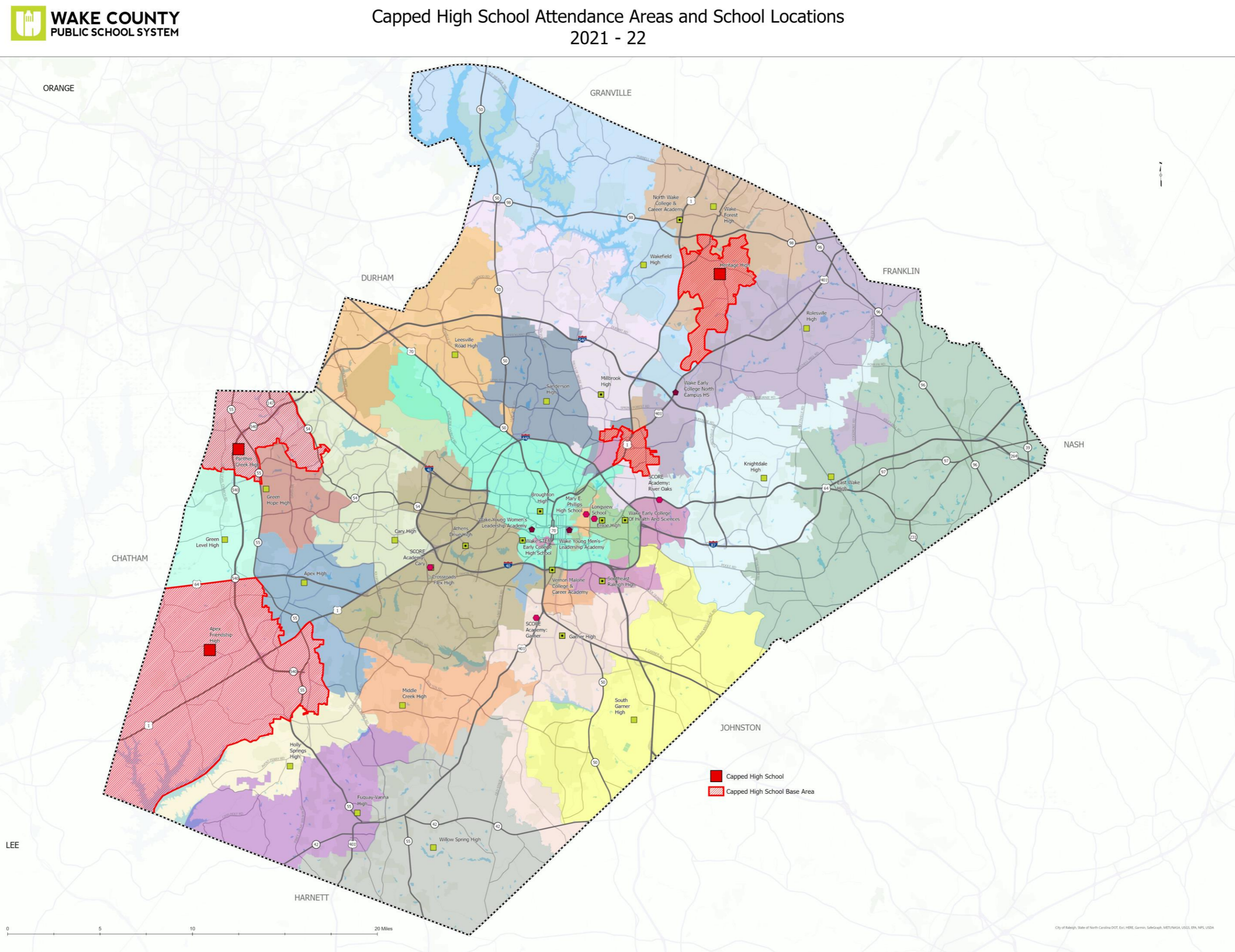
# CAPPED ELEMENTARY SCHOOLS



# CAPPED MIDDLE SCHOOLS



# CAPPED HIGH SCHOOLS



# School Capping Considerations

- Class size legislation
- Impacts to school capacity
- Core facilities overloaded
- Alternative means of accommodating growth within school building exhausted
- Trailer additions not possible
- Projected enrollment growth beyond capacity

# School Capping Consideration Details

- Must accommodate students living in their base prior to cap
- Program classrooms converted to capacity classrooms
- K-1 classrooms must be on first floor
- K-1 accommodated in trailers and/or a modular
- Number of co-teaching classrooms
- Number of combination classrooms
- Number of students per classroom

# K-3 Class Size Legislation Details

- K class size - 18:1
- 1<sup>st</sup> grade class size - 16:1
- 2<sup>nd</sup> and 3<sup>rd</sup> grade class size - 17:1 each

# 2021-22 Capping Recommendations

Staff recommends that the enrollment cap be removed from the following 2 schools:

Schools	% Crowding w/Trailers
Combs ES	97.9%
Lead Mine ES	99.8%

# 2021-22 Capping Recommendations

Staff recommends that these 4 **additional** schools be capped:

Schools	% Crowding w/Trailers
Apex ES	111.4%
Holly Ridge ES	126.4%
Parkside (M-T) ES	110.4%
River Bend ES	119.6%

# 2021-22 Capping Recommendations (Overflow Schools)

Staff recommends these 4 additional schools be capped with these potential overflow schools:

Schools	Potential Overflow Schools	% Crowding w/Trailers
Apex ES	Baucom ES *@ Woods Creek ES (E51)	96.6%
	Penny Road ES	87.0%
Holly Ridge ES	Middle Creek (M-T) ES	73.6%
Parkside (M-T) ES	Adams (M-T) ES	67.7%
River Bend ES	Fox Road ES	78.1%

\* Baucom capacity will increase when they swing to Woods Creek ES.

# Feeder Pattern Cap for Apex Friendship HS

- Extraordinary growth in Base Attendance Area
- Growth that exceeds what can be addressed by only considering new families moving into the base
- Affects operational efficiency at the school

# Growth Management Options

- Apply Enrollment Caps
- Convert Schools to Multi-Track Year-Round
- Reassign Students

# Cost Implications

- We estimate that approximately 11 additional buses will be needed to accommodate the proposed new school caps
- Hiring additional drivers will continue to be the greatest challenge
- Increased bus ride times for students

# Recommended Caps

## **Staff proposes:**

- Remove the caps from 2 schools.
- Implement new caps on 4 additional schools.

# Next Steps – Timeline and Questions

## February 1st Board of Education Meeting

Approve 2022 capping recommendations

## Dialogue & Questions