

# Year-Round Schools Discussion

## Under-Utilized Schools

January 18, 2022

# Today's Objectives

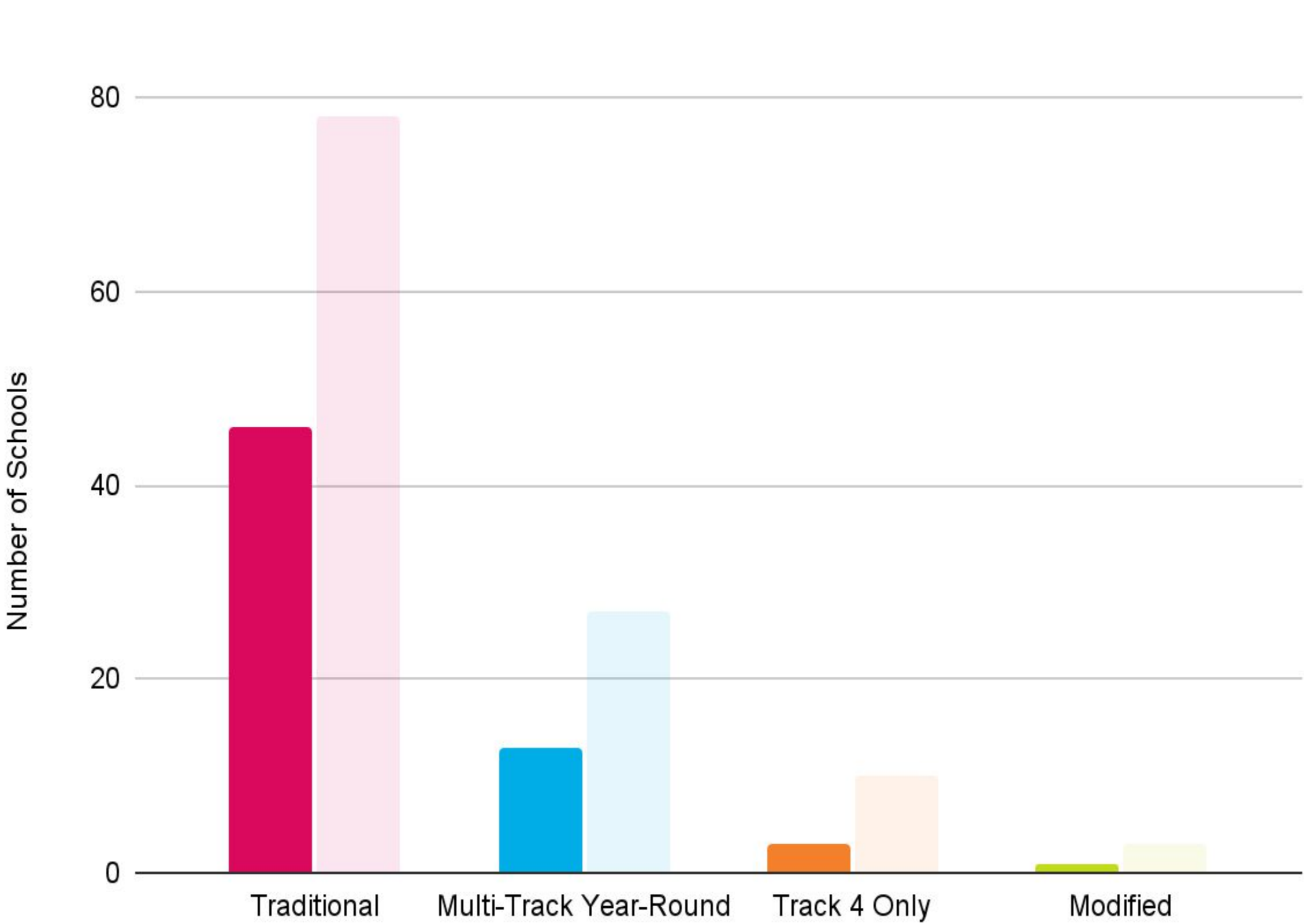
## The Board will have:

- An understanding of the metrics used by staff to determine when to consider recommendations to the Board for changing a school from multi-track year-round to single track (Track 4 only)
- A recommendation from staff for changing several schools from multi-track year-round to track 4 only

# District Data

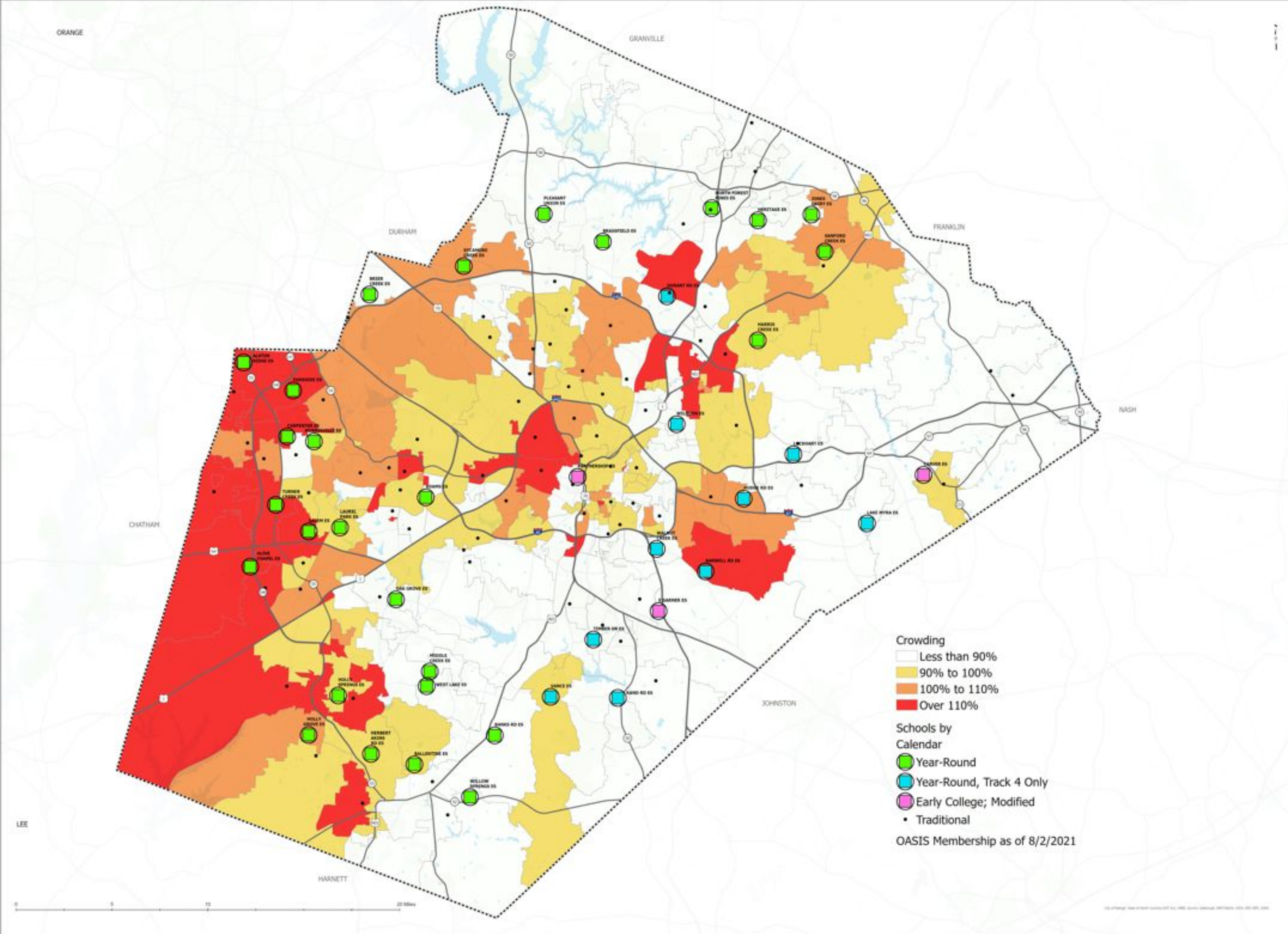
## Elementary School Crowding

Number of schools over 95% crowded



- **Traditional: 46/78 (59%)**
- **Multi-Track Year-Round: 13/27 (48%)**
- **Track 4 Only: 3/10 (30%)**
- **Modified: 1/3 (33%)**

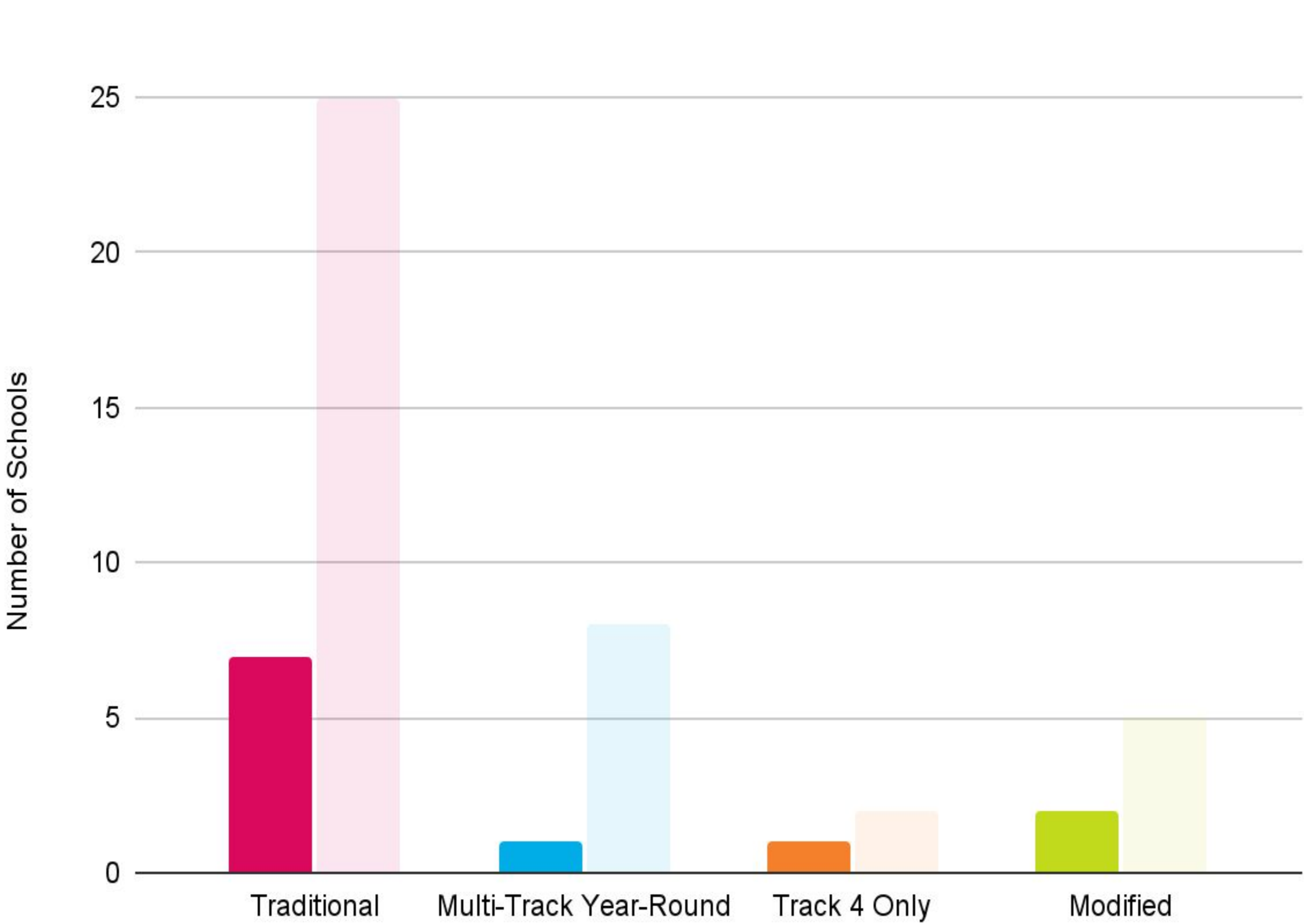
(\* percentages rounded to nearest whole percent)



# District Data

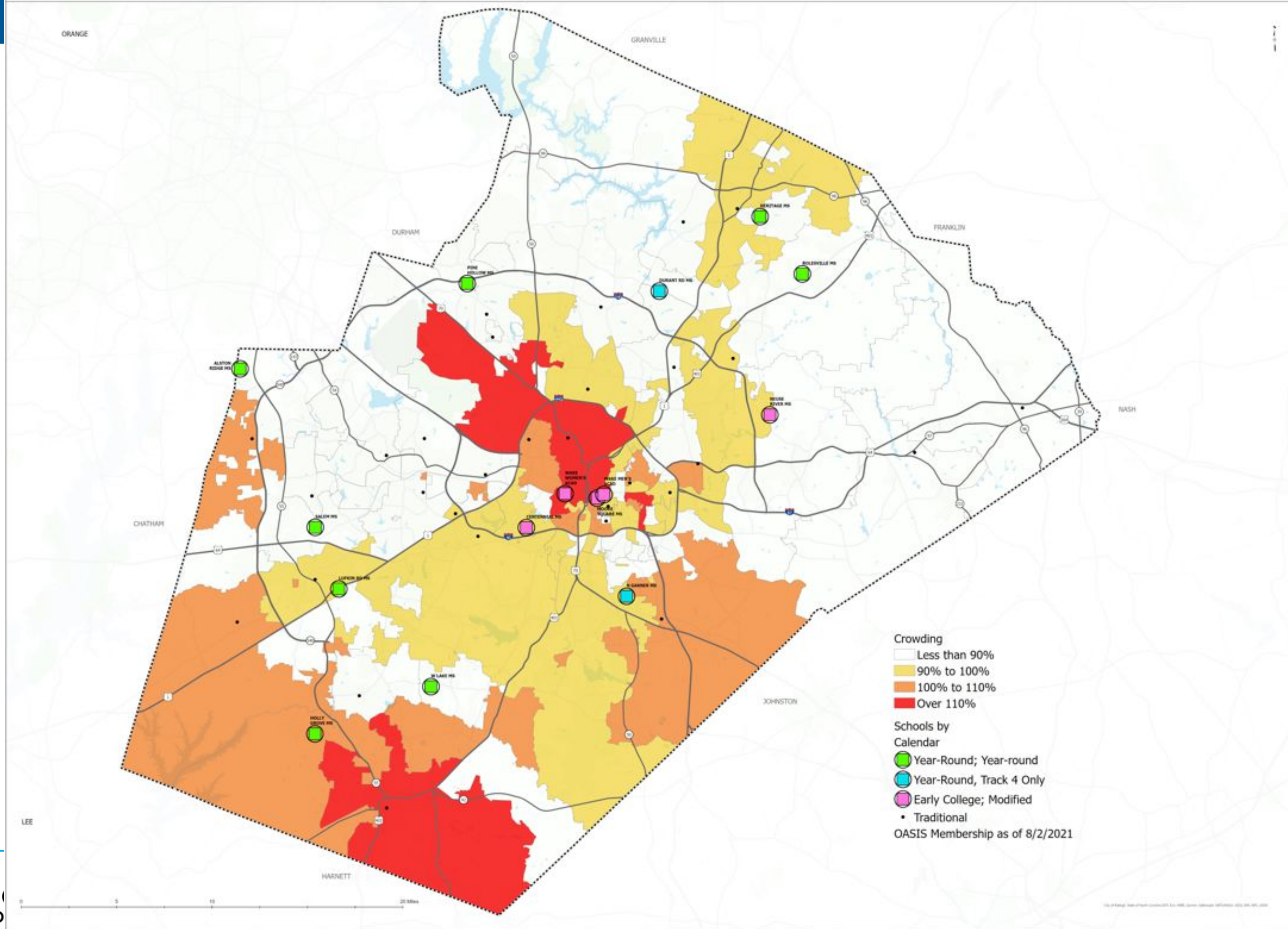
## Middle School Crowding

Number of schools over 95% crowded



- **Traditional: 7/25 (28%)**
- **Multi-Track Year-Round: 1/8 (13%)**
- **Track 4 Only: 1/2 (50%)**
- **Modified: 2/5 (40%)**

(\* percentages rounded to nearest whole percent)



# Calendar Law- S.L. 2020-3 (SB 704) Updated June 30, 2020

**Year-round:** A school with a single- or multi-track instructional calendar to provide instructional days throughout the entire school calendar year, beginning July 1 and ending June 30, by utilizing at least one of the following plans:

1. A plan dividing students into four groups and requiring each group to be in school for assigned and staggered quarters each school calendar year.
2. A plan providing students be scheduled to attend four quarters of between 43 and 47 instructional days each school calendar year, with vacation periods for students of between 14 and 18 days separating each quarter.
3. A plan dividing the school calendar year into five nine-week sessions of classes and requiring each student to attend four assigned and staggered sessions out of the five nine-week sessions to complete the student's instructional year.
4. In a LEA with both single- and multi-track instructional calendars, a plan for a single-track instructional calendar that is identical to at least one track of a multi-track instructional calendar adopted by the local board that meets the requirements of either 1. or 3. above.

# Factors Considered: Multi-Track to Track 4 Only

1

## Utilization

As a multi-track school, is the school building utilization at 75% or less?

2

## Growth Potential

Will there be a need for additional seats based on the Capital Improvement Plan and long-range projections?

3

## Feeder Alignment

Can the feeder schools align tracks for siblings?

# Projected Utilization

- ✓ Multi-Track Year-Round Schools with a projected utilization of less than 75%
- ❑ Does not have expected growth or impact from the CIP
- ❑ Has feeder schools that can align tracks with siblings

- Adams Elementary
- Middle Creek Elementary
- West Lake Elementary
- Willow Springs Elementary
- Rolesville Middle
- West Lake Middle

# Projected Utilization

- ✓ Multi-Track Year-Round Schools with a projected utilization of less than 75%
- ✓ Does not have expected growth or impact from the CIP
- ☐ Has feeder schools that can align tracks with siblings

- Adams Elementary
- Middle Creek Elementary
- West Lake Elementary
- Willow Springs Elementary
- Rolesville Middle
- West Lake Middle

# Projected Utilization

- ✓ Multi-Track Year-Round Schools with a projected utilization of less than 75%
- ✓ Does not have expected growth or impact from the CIP
- ✓ Has feeder schools that can align tracks with siblings

- Adams Elementary
- Middle Creek Elementary
- West Lake Elementary
- Willow Springs Elementary
- Rolesville Middle
- West Lake Middle

# West Lake Middle Feeder Schools

West Lake Middle feeder elementary schools:

- Banks Road (MTYR)
- East Garner (Mod)
- Middle Creek (MTYR)
- Vance (T4)
- Walnut Creek (T4)
- West Lake (MTYR)

# West Lake Middle School Feeder: Possible Exception

## Banks Road (MTYR)

- Does not project to be lower than 75% utilized (80%)
- Approximately 1/3 of the base will be assigned to West Lake Middle (remaining students will be assigned to Herbert Akins Middle (MTYR))
- Future potential growth in the area
- Will be directly impacted with the opening of Hilltop Needmore Road Elementary

## Staff Recommendation

- Do not change calendar at this time
- Reassess after Hilltop Needmore Road Elementary opens

# Public Feedback

- West Lake PTA meeting (November 1st)
- January 10<sup>th</sup> virtual feedback session (200+ participants)
  - Parent survey provided to participants
  - Presentation and survey were also sent to parents that did not participate

# Public Feedback

## Parent Survey Results

**Based on the information provided, how supportive would you be of a change from multi-track year-round to track 4 only?**

**Very Supportive-** 542 responses (50%)

**Somewhat Supportive-** 163 (15%)

**Undecided-** 105 (10%)

**I do not support this change-** 275 (26%)

1,078 total responses

# Final Thoughts

Three multi-track year-round schools **qualify** and are **recommended for a change** to track 4 only.

West Lake  
Middle

West Lake  
Elementary

Middle Creek  
Elementary

→ Staff will review these schools after a three-year period to determine if adjustments are needed.

Additionally:

- Banks Road Elementary will be **reassessed** when Hilltop Needmore Road Elementary opens.
- Adams and Willow Springs Elementary and Rolesville Middle will continue to be **monitored** over time.
- Moving forward, analysis will be provided for any new schools that meet the criteria shared today as situations arise.

# Closing Thoughts or Questions?