

School Capping Recommendations

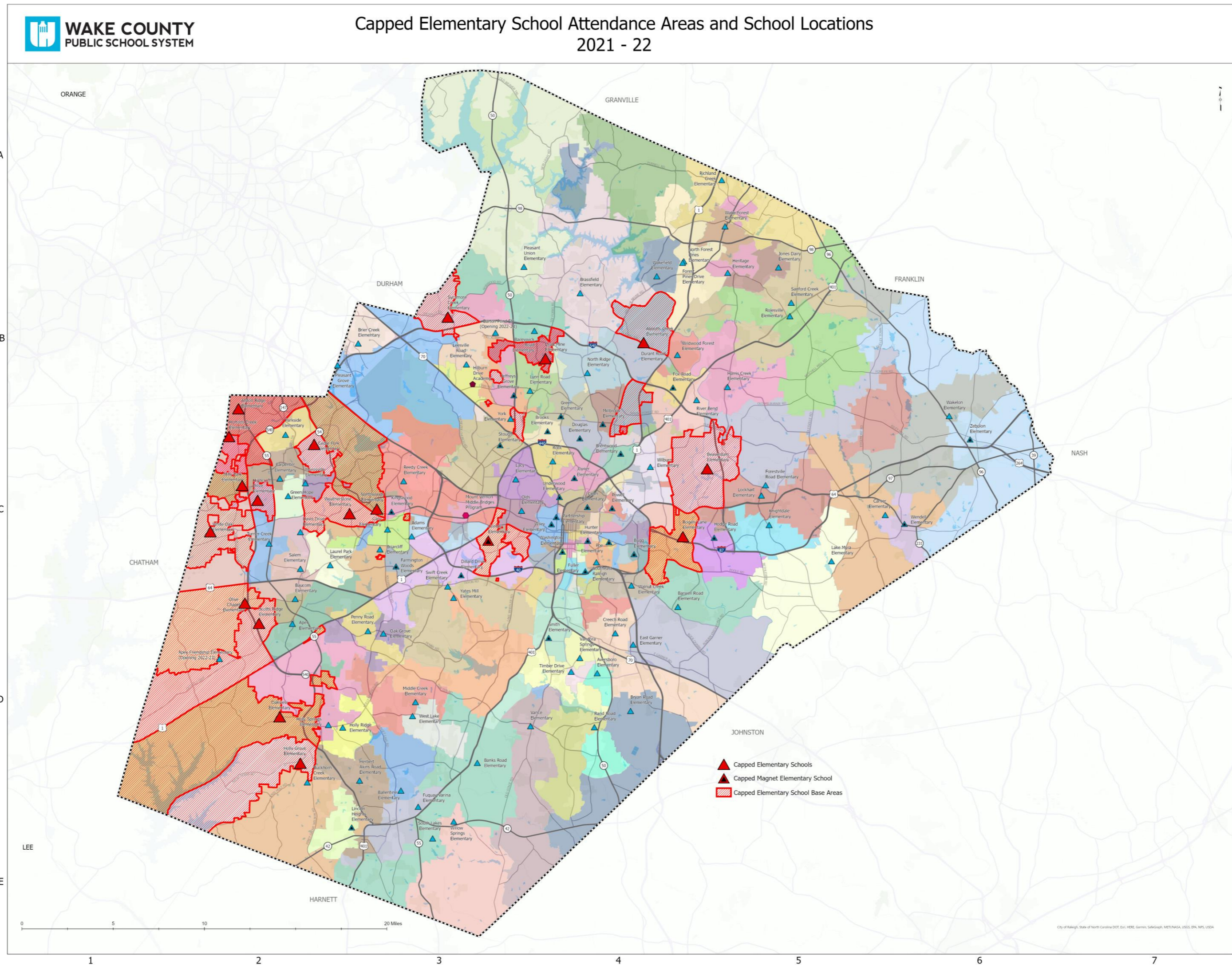
February 1, 2022

Glenn Carrozza, WCPSS Assistant Superintendent for School Choice, Planning and Assignment
Marcella S. Rorie, Senior Director Long Range Planning

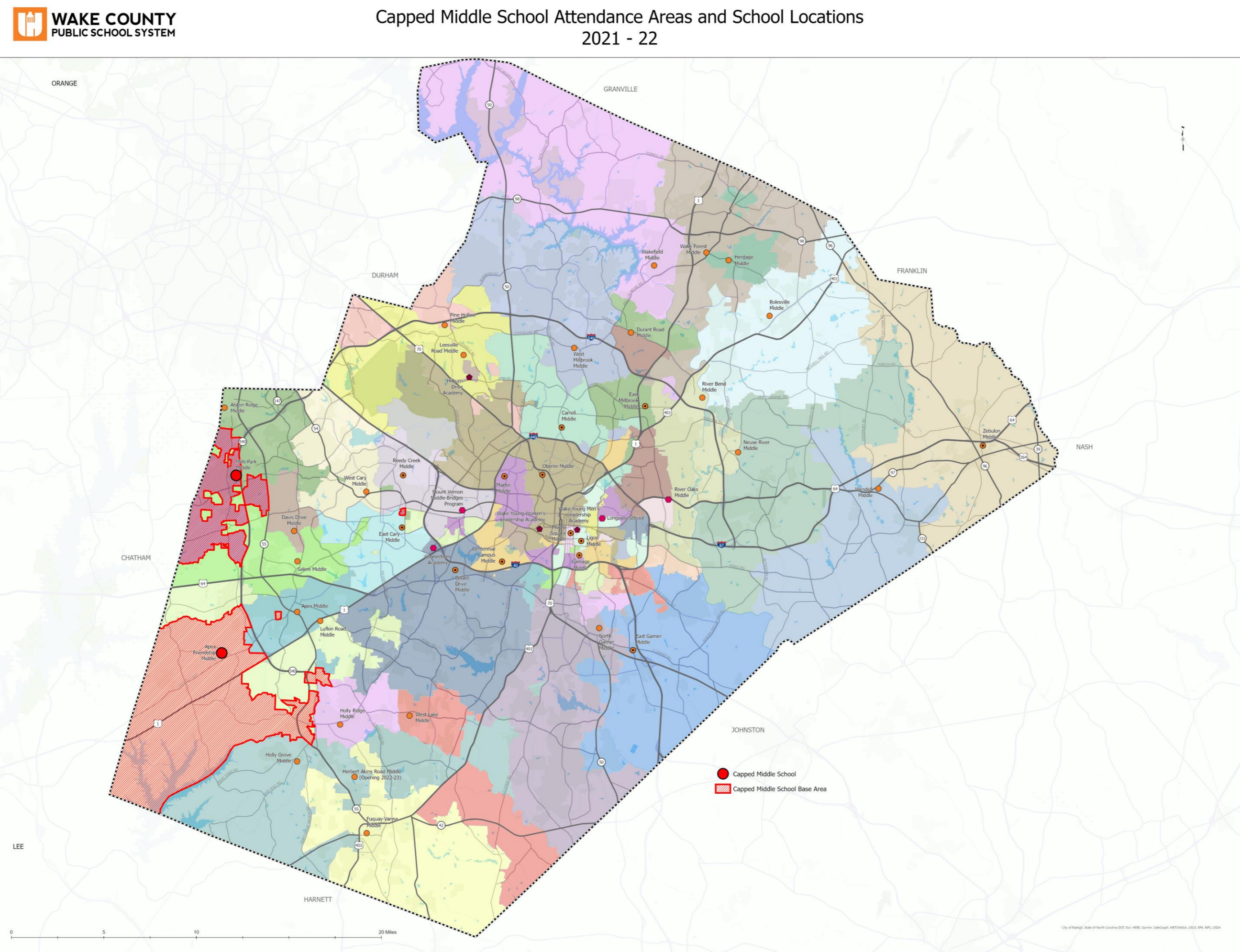
2021-22 Capped Schools (18 Elementary, 2 Middle, 3 High)

Elementary		Middle	High
Abbotts Creek	Northwoods	Apex Friendship	Apex Friendship
Alston Ridge (MTYR)	Oakview	Mills Park	Heritage
Beaverdam	Olive Chapel (MTYR)		Panther Creek
Cedar Fork	Rogers Lane		
Combs	Scotts Ridge		
Highcroft Drive	Sycamore Creek		
Holly Grove (MTYR)	Weatherstone		
Hortons Creek	White Oak		
Lead Mine			
Mills Park			

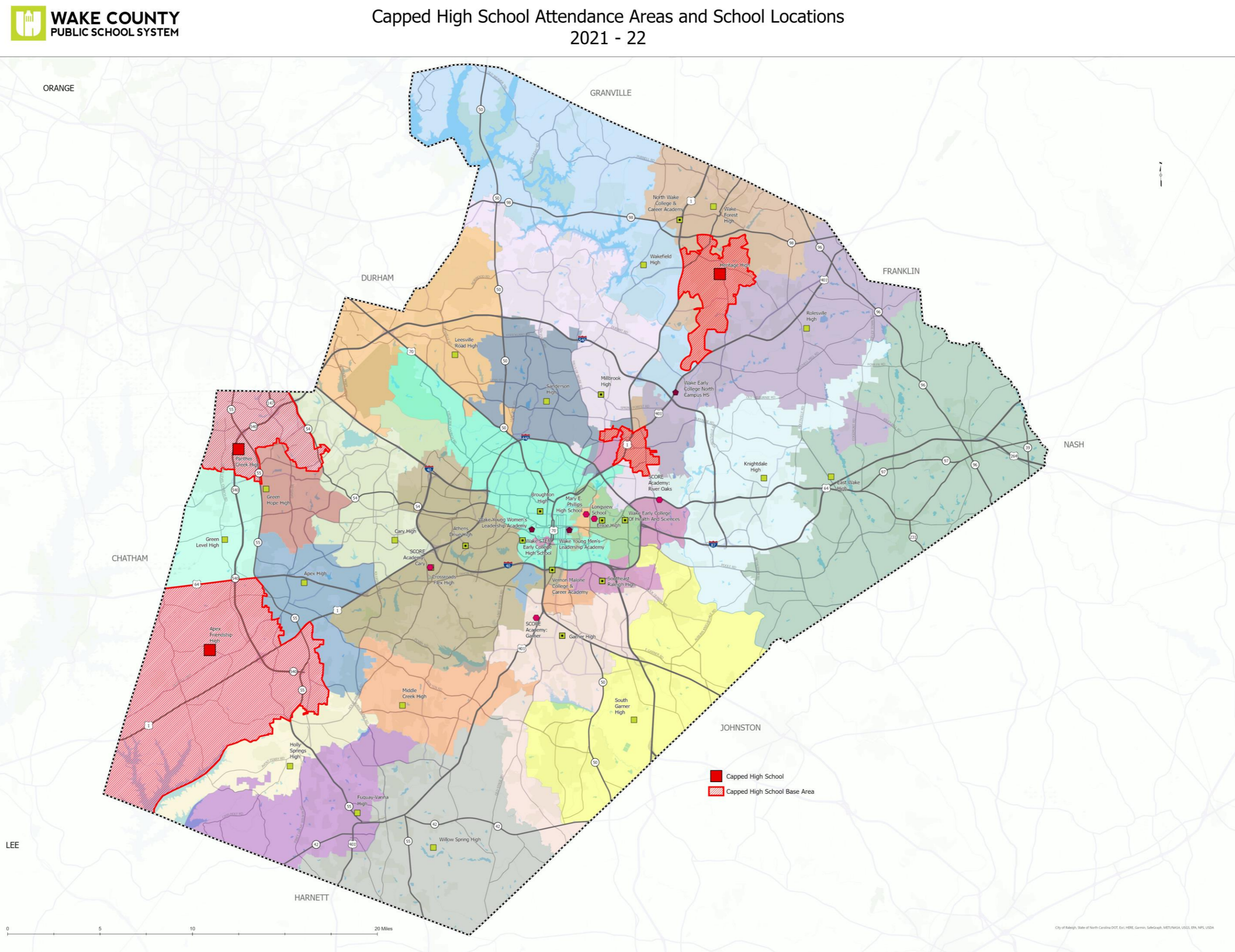
CAPPED ELEMENTARY SCHOOLS



CAPPED MIDDLE SCHOOLS



CAPPED HIGH SCHOOLS



School Capping Considerations

- Class size legislation
- Impacts to school capacity
- Core facilities overloaded
- Alternative means of accommodating growth within school building exhausted
- Trailer additions not possible
- Projected enrollment growth beyond capacity

School Capping Consideration Details

- Must accommodate students living in their base prior to cap
- Program classrooms converted to capacity classrooms
- K-1 classrooms must be on first floor
- K-1 accommodated in trailers and/or a modular
- Number of co-teaching classrooms
- Number of combination classrooms
- Number of students per classroom

K-3 Class Size Legislation Details

- K class size - 18:1
- 1st grade class size - 16:1
- 2nd and 3rd grade class size - 17:1 each

K-3 Class Size Legislation Impacts

- There were 559 fewer classrooms, or approximately 9,500 fewer seats when this legislation was enacted.

Proposed Capped Totals per Grade					
	Grade K	Grade 1	Grade 2	Grade 3	
2018-2019	20	20	20	20	K-3 avg of 20
2019-2020	18	16	20	20	K-3 avg of 19
2020-2021	18	16	17	20	K-3 avg of 18
2021-2022	18	16	17	17	

2021-22 Capping Recommendations

Staff recommends that the enrollment cap be removed from the following 2 schools:

Schools	% Crowding w/Trailers
Combs ES	97.9%
Lead Mine ES	99.8%

2021-22 Capping Recommendations

Staff recommends that these 4 **additional** schools be capped:

Schools	% Crowding w/Trailers
Apex ES	111.4%
Holly Ridge ES	126.4%
Parkside (M-T) ES	110.4%
River Bend ES	119.6%

2021-22 Capping Recommendations (Overflow Schools)

Staff recommends these 4 additional schools be capped with these potential overflow schools:

Schools	Potential Overflow Schools	% Crowding w/Trailers
Apex ES	Baucom ES *@ Woods Creek ES (E51)	96.6%
	Penny Road ES	87.0%
Holly Ridge ES	Middle Creek (M-T) ES	73.6%
Parkside (M-T) ES	Adams (M-T) ES	67.7%
River Bend ES	Fox Road ES	78.1%

* Baucom capacity will increase when they swing to Woods Creek ES.

Feeder Pattern Cap for Apex Friendship HS

- Extraordinary growth in Base Attendance Area
- Growth that exceeds what can be addressed by only considering new families moving into the base
- Affects operational efficiency at the school

Growth Management Options

- Apply Enrollment Caps
- Convert Schools to Multi-Track Year-Round
- Reassign Students

Cost Implications

- We estimate that approximately 11 additional buses will be needed to accommodate the proposed new school caps
- Hiring additional drivers will continue to be the greatest challenge
- Increased bus ride times for students

Recommended Caps

Staff proposes:

- Remove the caps from 2 schools.
- Implement new caps on 4 additional schools.
- Implement feeder pattern cap for Apex Friendship HS.

Next Steps – Timeline and Questions

Approve 2022 capping recommendations

Meet with capped and overflow schools to review next steps