



Parkside Middle School / Wake Early College of Information and Biotechnologies

SCHEMATIC DESIGN – Facilities Committee Meeting

Mark Strickland, Chief of Facilities + Operations Officer

Elizabeth Sharpe, Director of Planning, FD+C

M. Elizabeth Wakeford, Senior Facility Planner, FD+C

Alice Reese, Senior Site Planner, FD+C

February 9, 2022

Parkside MS / Wake Early College of Information + Biotechnologies

PROJECT GOALS



The new building shall provide a single Campus **identity** which is unique to this community and reflective of its diversity of cultures while offering a sense of belonging to all students and staff.

The building shall be **connected to the site** through views and space, taking advantage of its natural features, and offering opportunities for outdoor learning environments.



The new school shall provide a **clear sense of separation between MS and HS** through circulation, appropriate wayfinding, and arrangement of classrooms and gathering spaces. It shall have a defined main entry that is **welcoming** to visitors while at the same time offering a sense of **security** for students and staff.

Parkside MS / Wake Early College of Information + Biotechnologies

PROJECT GOALS



Educational excellence within a uniquely stimulating environment



Flexibility and choice of collaborative learning spaces



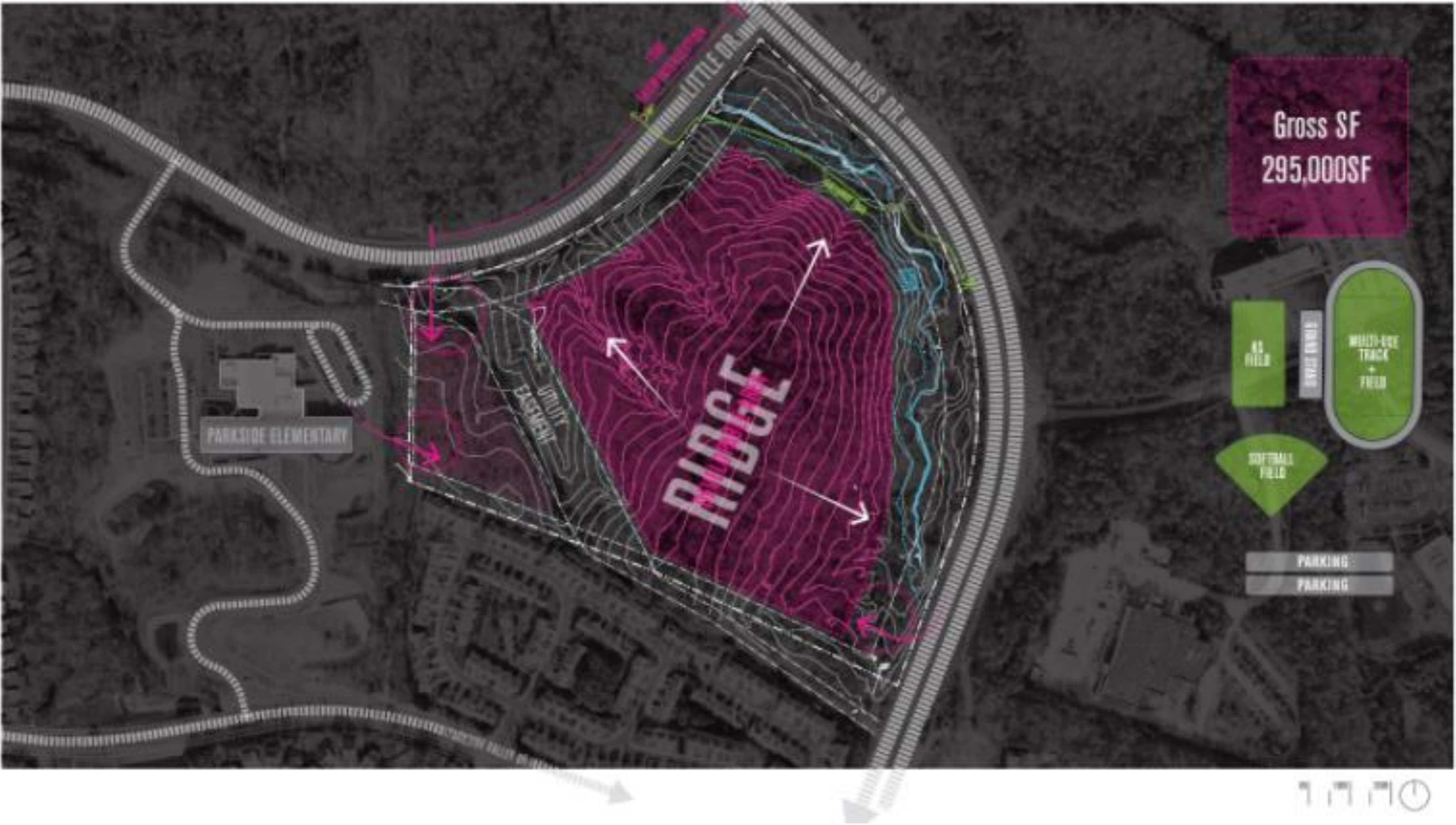
Opportunities for interaction with outdoor spaces



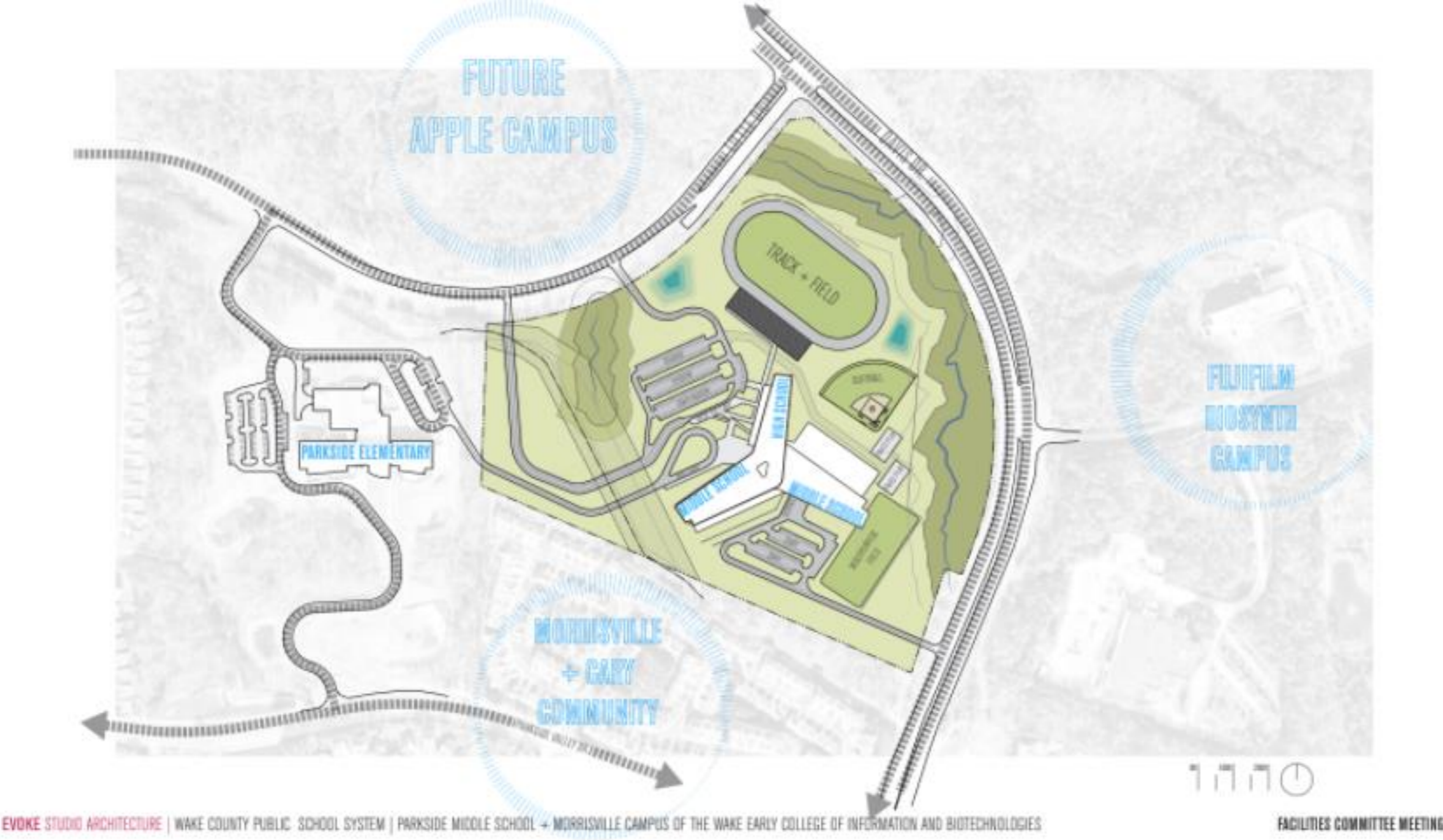
- Parkside MS / Wake Early College of Information + Biotechnologies VICINITY MAP



Parkside MS / Wake Early College of Information + Biotechnologies SITE



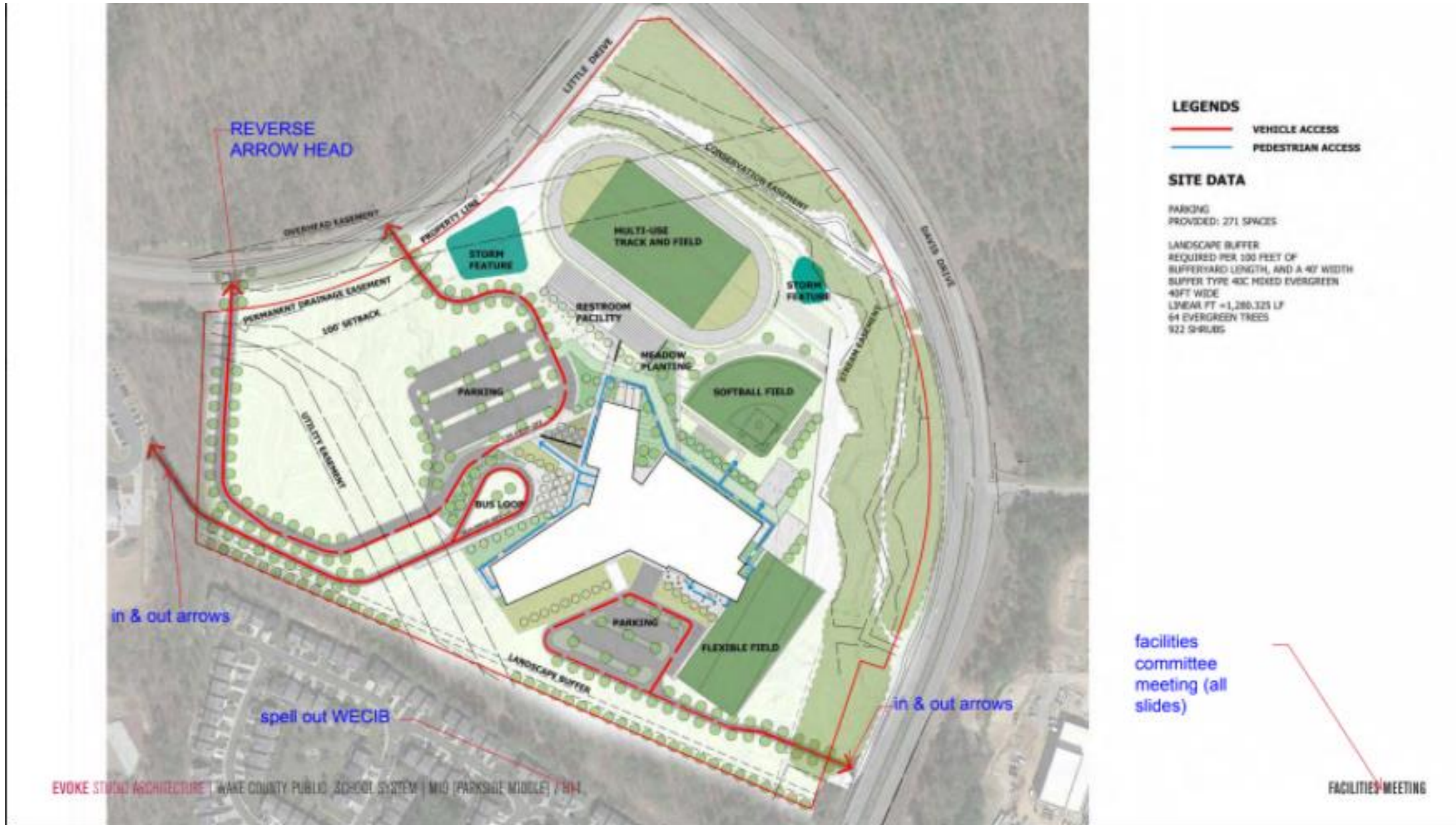
Parkside MS / Wake Early College of Information + Biotechnologies SITE



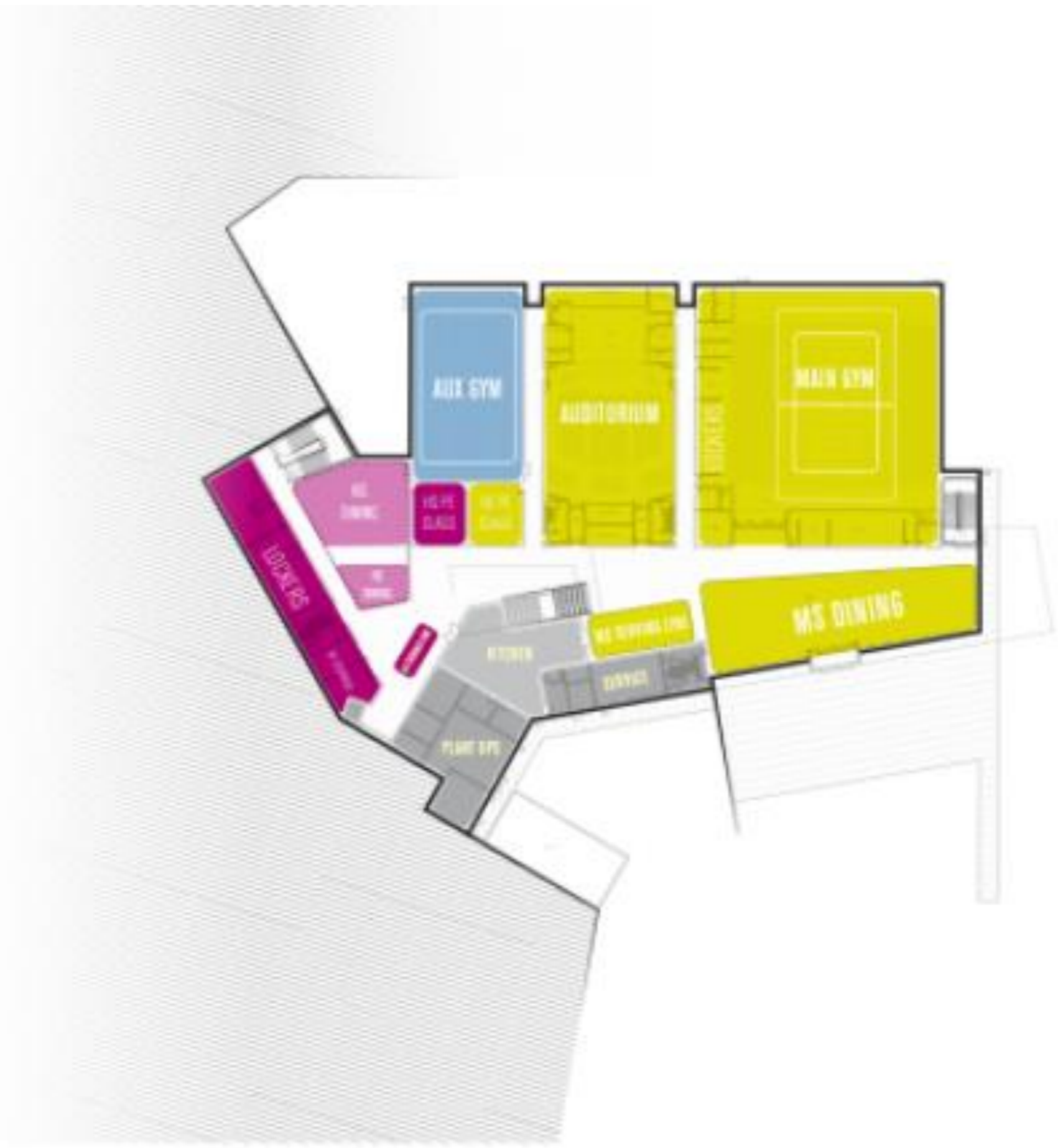
Parkside MS / Wake Early College of Information + Biotechnologies SITE



Parkside MS / Wake Early College of Information + Biotechnologies SITE CIRCULATION



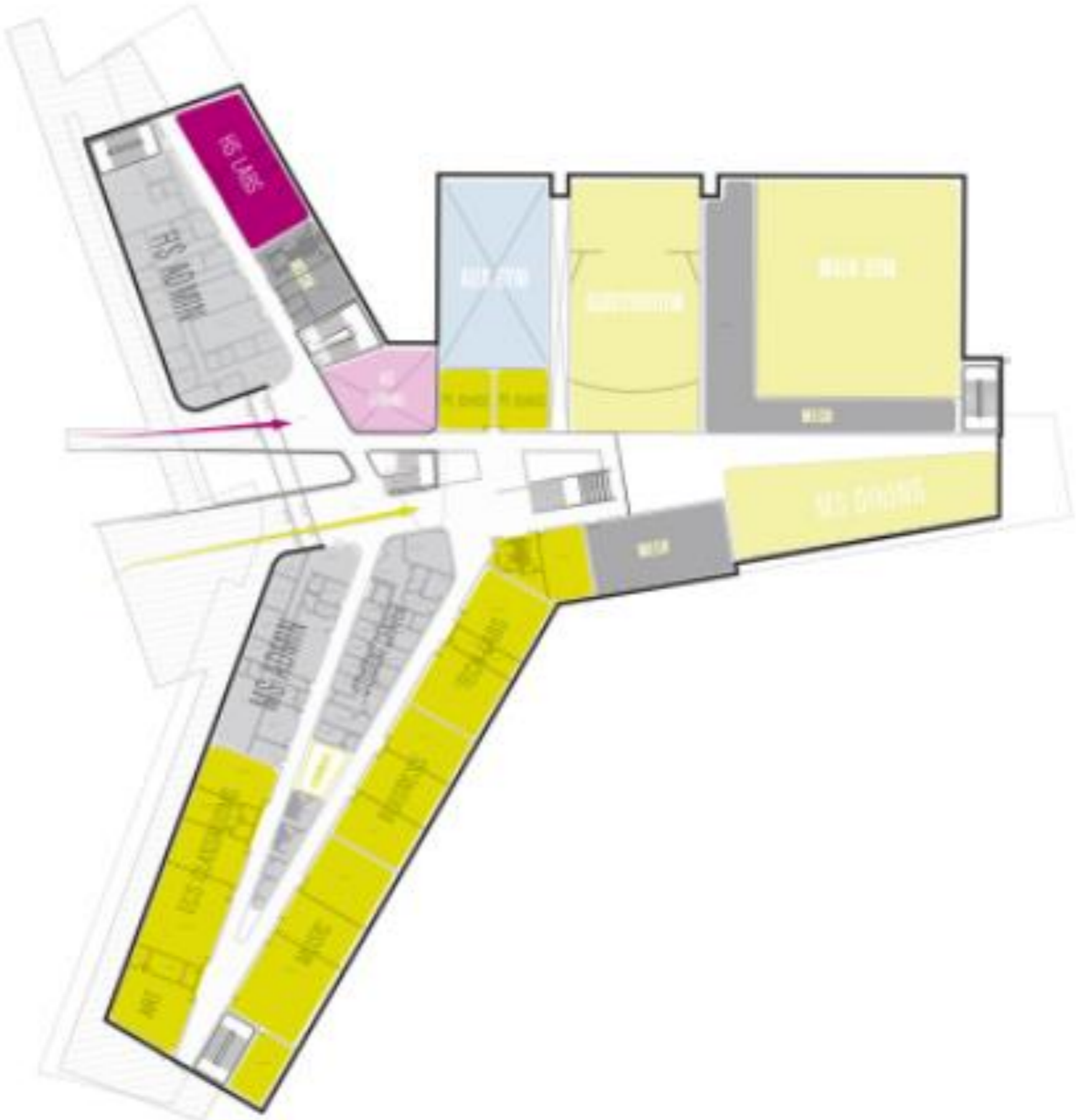
PLAN DEVELOPMENT
LEVEL 00



EVOKE STUDIO ARCHITECTURE | WAKE COUNTY PUBLIC SCHOOL SYSTEM | M19 (PARKSIDE MIDDLE) / H11

FACILITIES MEETING

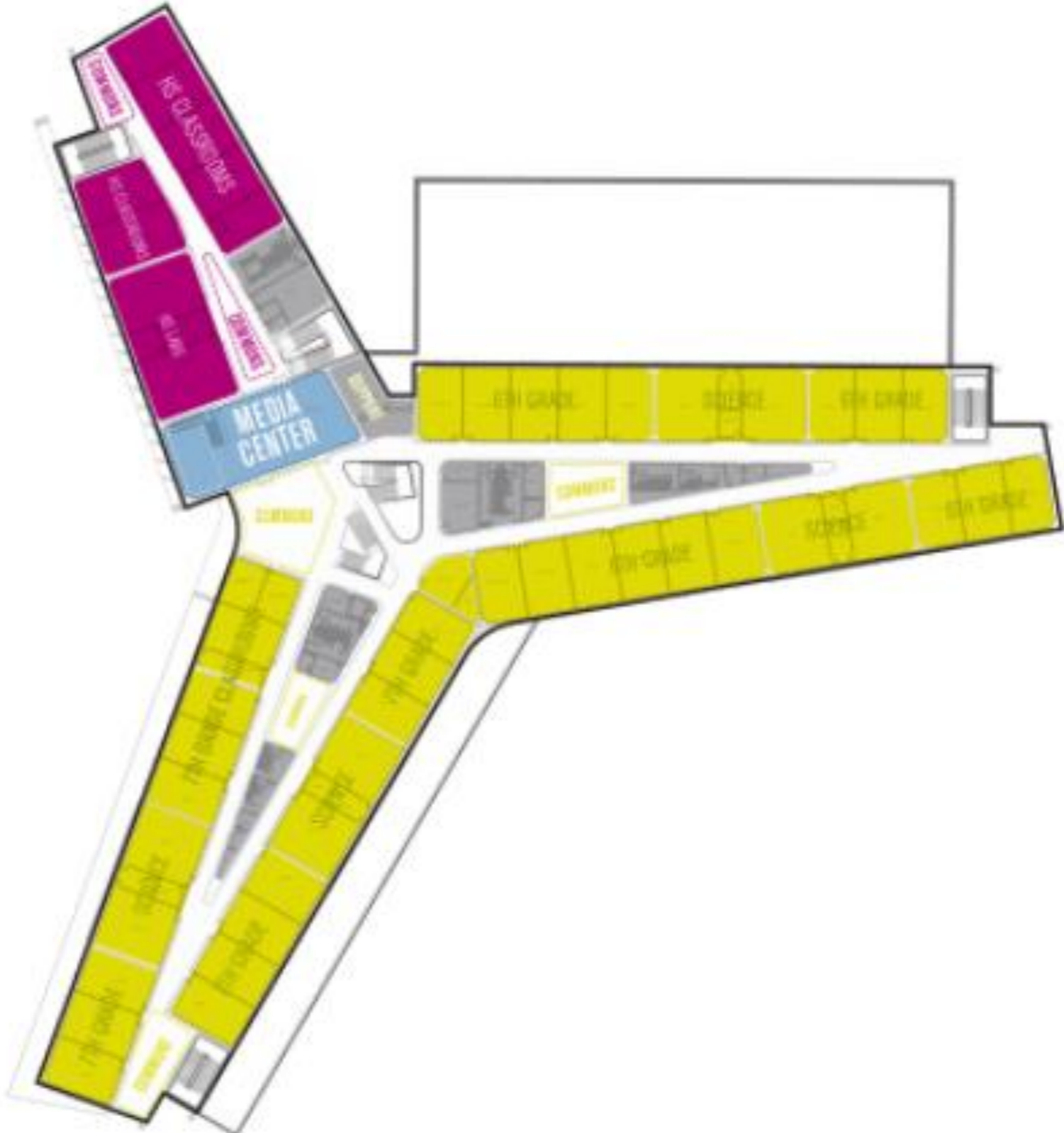
PLAN DEVELOPMENT
LEVEL 01



EVOKE STUDIO ARCHITECTURE | WAKE COUNTY PUBLIC SCHOOL SYSTEM | M19 (PARKSIDE MIDDLE) / H11

FACILITIES MEETING

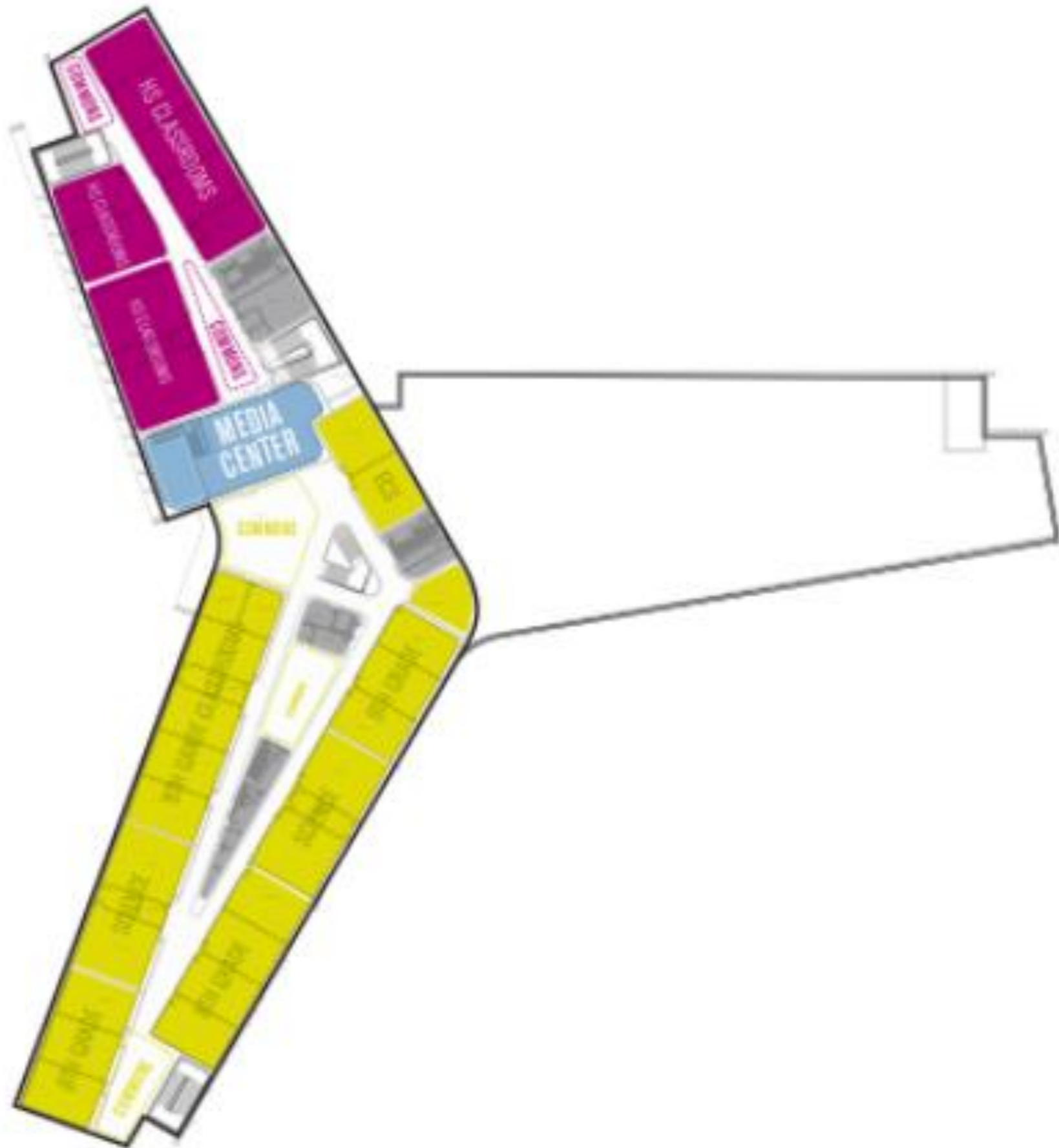
PLAN DEVELOPMENT
LEVEL 02



EVOKE STUDIO ARCHITECTURE | WAKE COUNTY PUBLIC SCHOOL SYSTEM | M19 (PARKSIDE MIDDLE) / H11

FACILITIES MEETING

PLAN DEVELOPMENT
LEVEL 03



EVOKE STUDIO ARCHITECTURE | WAKE COUNTY PUBLIC SCHOOL SYSTEM | M19 (PARKSIDE MIDDLE) / H11

FACILITIES MEETING

OPTION FOR FLEXIBLE CAPACITY

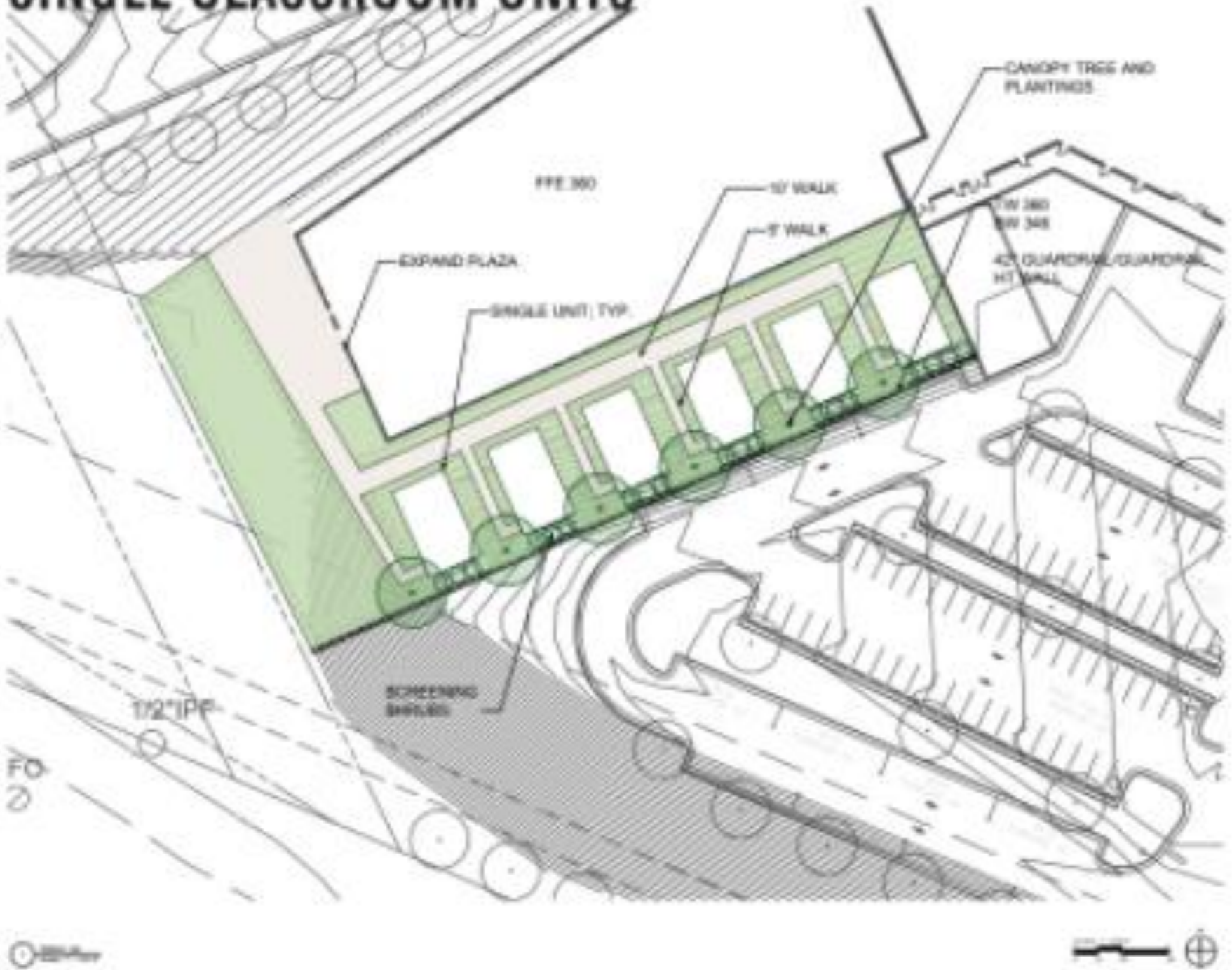


Parkside MS / Wake Early College of Information + Biotechnologies

OPTION FOR FLEXIBLE CAPACITY

MOBILE UNITS

SINGLE CLASSROOM UNITS



SIX-CLASSROOM MODULAR



EVOKE STUDIO ARCHITECTURE | WAKE COUNTY PUBLIC SCHOOL SYSTEM | PARKSIDE MIDDLE SCHOOL + MORRISVILLE CAMPUS OF THE WAKE EARLY COLLEGE OF INFORMATION AND BIOTECHNOLOGIES

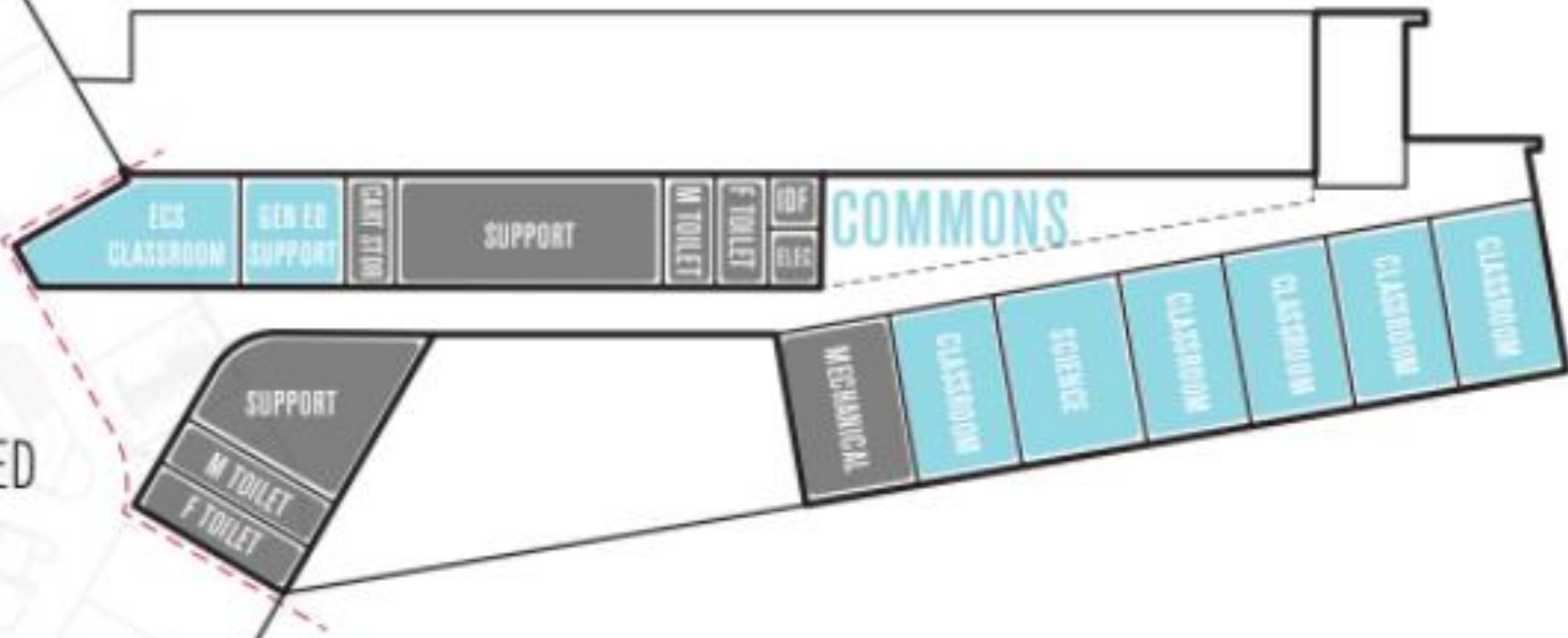
FACILITIES COMMITTEE MEETING

Parkside MS / Wake Early College of Information + Biotechnologies

ALTERNATIVE SOLUTION FOR FLEXIBLE CAPACITY

BUILDING ADDITION

- INCREASE TO COLUMN + FOOTING SIZES IN BASE BUILDING TO ACCOMODATE FUTURE LOAD
- MINIMAL IMPACT TO EXISTING BUILDING LAYOUT
- MUST EXTEND FULL LENGTH OF BUILDING WING TO MEET EGRESS REQUIREMENTS
- EXTENSION OF BASE BUILDING MEP+FP SYSTEMS (UNLIKELY TO REQUIRE INCREASED SYSTEM SIZE)

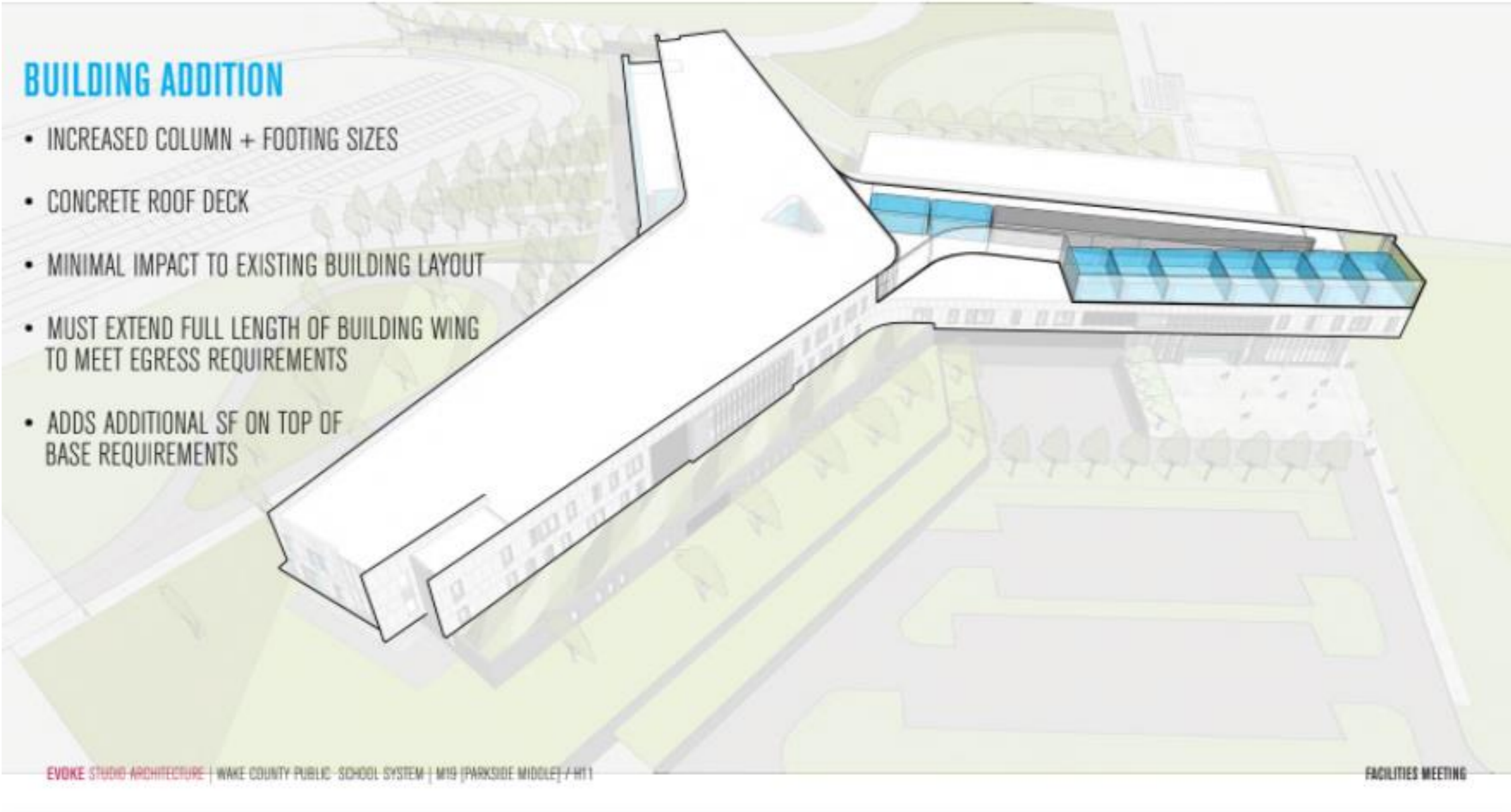


EVOKE STUDIO ARCHITECTURE | WAKE COUNTY PUBLIC SCHOOL SYSTEM | PARKSIDE MIDDLE SCHOOL + MORRISVILLE CAMPUS OF THE WAKE EARLY COLLEGE OF INFORMATION AND BIOTECHNOLOGIES

FACILITIES COMMITTEE MEETING

Parkside MS / Wake Early College of Information + Biotechnologies

ALTERNATIVE SOLUTION FOR FLEXIBLE CAPACITY



Parkside MS / Wake Early College of Information + Biotechnologies

