



Actions:

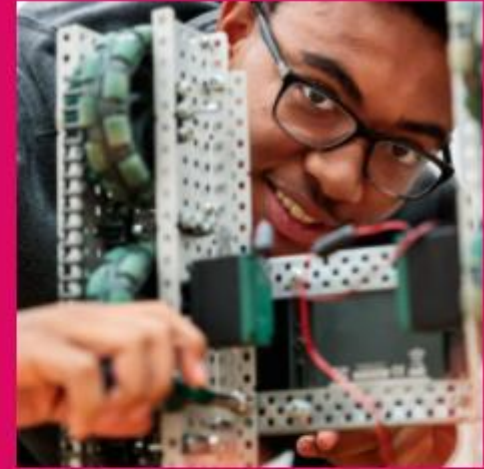
- Review updates and emerging takeaways from stakeholder input sessions
- Discuss implications for fall of 2022-2023



Time	Item	Lead
5 min	Introduction and Updates	RTI
25 min	Stakeholder Feedback	RTI and staff
25 min	Reflections and Implications Discussion	RTI
5 min	Next Steps	RTI



**Stakeholder
Engagement
Spring 2022**



Stakeholder Engagement

Planned engagement structures

Board Advisory
Committees

- Community members including parents representing a Board member's region

Structured Community Focus
Groups

- Including students, higher ed, community advocacy groups, faith community, business community, military representatives, and elected officials

Educator, Staff, and Student
Structures

- Superintendent's teacher and student advisory councils, school-based administrator meetings, and other existing structures to seek input from school-based staff, district leaders, and central office staff.

Thought Exchange
community-wide

- Gather input from any stakeholder across the county using an online platform.



Stakeholder Engagement

Essential Question:

- What **knowledge, skills, dispositions, and attitudes** are most important for our students to acquire before they graduate?

Stakeholder Engagement

- All BAC meetings scheduled
- Launched the Thought Exchange link to the broader community
- Input from school-based administrators and school staff
- Input from central services personnel
- Input from students
- Facilitation of in-person focus sessions

Background on Thought Exchange Process

What knowledge, skills, dispositions, and attitudes are most important for our students to acquire before they graduate?

- Enter your own thoughts
- Rate the *importance* of each thought (yours and others)
- Other stakeholders are doing the same (parents, community, students, staff)



Participation by Stakeholder Group

Parents



Students



Community



Staff



Initial Themes Identified Across All Responses

- Collaboration
- Communication
- Critical Thinking
- Creativity/Adaptability
- Social-Emotional
Competence
- Empathy
- Problem Solving
- Respect
- Financial Literacy
- Work Ethic/Habits
- Content Literacies
(Reading, Math, etc.)
- Digital Literacy

Aggregated Themes

- 4Cs - Collaboration, Communication, Critical Thinking, Creativity
- Social-Emotional Competence
- Empathy/Respect
- Financial Literacy
- Work Ethic/Habits
- Content Literacies (Reading, Math, etc.)
- Digital Literacy

Priority Areas for Parents/Guardians



Critical Thinking/ Problem Solving, Communication Collaboration, Creativity/ Adaptability



Credit, Savings, Taxes, Staying Out of Debt



Relationship/ Social Skills, Self-Management, Coping, Managing Emotions



Reading, Math, Science, Social Studies, Languages, etc.

Priority Areas for Students



Financial
Literacy

**Credit, Savings,
Taxes, Staying Out
of Debt**



4Cs

**Critical Thinking/ Problem
Solving, Communication
Collaboration, Creativity/
Adaptability**



Social-Emotional
Competence

**Relationship/
Social Skills, Self-
Management, Coping,
Managing Emotions**



Work Ethic/Habits

**Resilience,
Persist/Learn from
Mistakes, Personal
Accountability,
Time Management**



Priority Areas for Community Members



Critical Thinking/ Problem Solving, Communication Collaboration, Creativity/ Adaptability



Reading, Math, Science, Social Studies, Languages, etc.



Understand Multiple Perspectives, Respect and Value Others



Credit, Savings, Taxes, Staying Out of Debt

Priority Areas for Staff



Critical Thinking/ Problem Solving, Communication Collaboration, Creativity/ Adaptability



Understand Multiple Perspectives, Respect and Value Others



Relationship/ Social Skills, Self-Management, Coping, Managing Emotions



Resilience, Persist/Learn from Mistakes, Personal Accountability, Time Management

Priorities Across Groups

	<u>First</u>	<u>Second</u>	<u>Third</u>	<u>Fourth</u>
Parents	4Cs	Financial Literacy	Social-Emotional Competence	Content Literacies
Students	Financial Literacy	4Cs	Social-Emotional Competence	Work Ethic/ Habits
Community	4Cs	Content Literacies	Empathy/ Respect	Financial Literacy
Staff	4Cs	Empathy/ Respect	Social-Emotional Competence	Work Ethic/ Habits

Focusing Questions for Discussion

- What do you see and hear that stands out to you?
- What are your reactions to the feedback?
- What aligns with your aspirations and hopes for students?
- What are the implications for our work in WCPSS?

Proposed Structure

Looking Ahead

Vision: All Wake County Public School System students will be prepared to reach their full potential and lead productive lives in a complex and changing world.

Mission: Wake County Public School System will provide a relevant and engaging education and will graduate students who are collaborative, creative, effective communicators and critical thinkers.

Core Beliefs

STRATEGIC PRIORITIES

The most important priorities to achieve our mission and vision.

Number To Be Determined

PRIORITY 1

PRIORITY 2

PRIORITY 3

Proposed Structure

Looking Ahead

Vision: All Wake County Public School System students will be prepared to reach their full potential and lead productive lives in a complex and changing world.

Mission: Wake County Public School System will provide a relevant and engaging education and will graduate students who are collaborative, creative, effective communicators and critical thinkers.

Core Beliefs

Long Term Measurable Goal

- Do you want to set/update a long-term goal(s) as in the previous strategic plan?
- Or a goal per priority?

Proposed Structure

Looking Ahead

Vision: All Wake County Public School System students will be prepared to reach their full potential and lead productive lives in a complex and changing world.

Mission: Wake County Public School System will provide a relevant and engaging education and will graduate students who are collaborative, creative, effective communicators and critical thinkers.

Core Beliefs

This Spring...

STRATEGIC PRIORITIES

The most important priorities to achieve our mission and vision.

PRIORITY 1

PRIORITY 2

PRIORITY 3

For the Fall...

ACTIONS

Primary strategic initiatives to enable realization of our goals.

MEASURES

Metrics to assess progress toward goals.

- At the next meeting we will discuss the most important **strategic priorities** to set to drive the work of our schools and educators heading into the fall.

Aligned Actions 1.1

Aligned Actions 1.2

Aligned Actions 1.3

Performance Outcomes/Measures 1.1

Performance Outcomes/Measure 1.2

Performance Outcomes/Measure 1.3

Aligned Actions 2.1

Aligned Actions 2.2

Aligned Actions 2.3

Performance Outcomes/Measure 2.1

Performance Outcomes/Measure 2.2

Performance Outcomes/Measure 2.3

Aligned Actions 3.1

Aligned Actions 3.2

Aligned Actions 3.3

Performance Outcomes/Measure 3.1

Performance Outcomes/Measure 3.2

Performance Outcomes/Measure 3.3



Questions