



# Board of Education Update



# Wake Tech Students' Return on Investment

GEORGETOWN UNIVERSITY



Center  
on Education  
and the Workforce

McCourt School of Public Policy

*“The Colleges Where  
Low-Income Students  
Get the Highest ROI”*

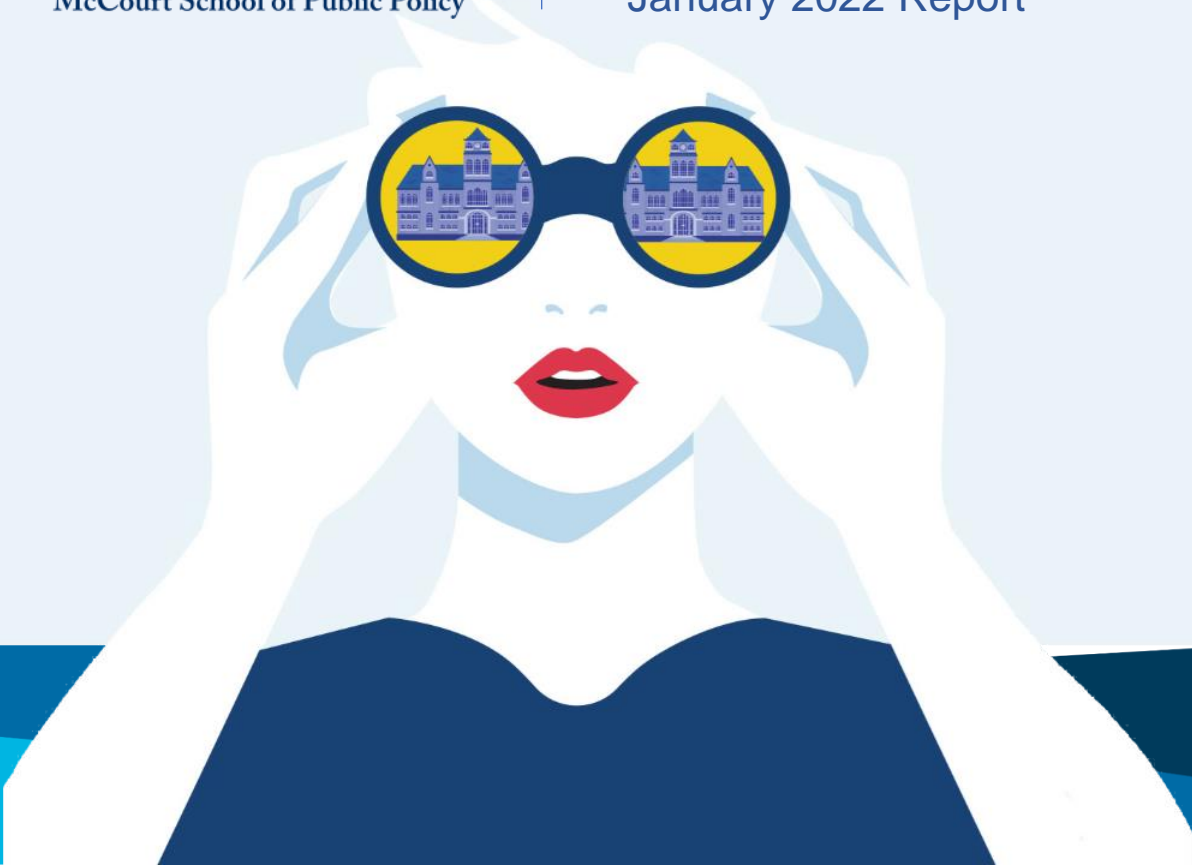
January 2022 Report

**Top 20%**

among US colleges  
after 10 years

**Top 10%**

among NC colleges  
after 10 years





*Reach'n  
Rally!*

STRATEGIC PLAN  
**2021-2025**

We will **REACH** students in every area of Wake County and **RALLY** around them to go as far as their dreams, talents, and resilience will take them.



# Career and College Promise

- *“Increase the percentage and diversity of high school students participating in Career & College Promise programs to the NC urban average in accordance with MyFutureNC recommendations.”*
  - *Partner (Title 1 HS) with WCPS to foster strategic dual enrollment (i.e., on-site, technology academies, Early College) to support students attending Title 1 high schools (SE Garner, SE Raleigh, Knightdale, East Wake).*
  - *Partner with programs associated with WCPS to reach and support students and parents from underserved populations, such as Communities in Schools, Juntos, NC Society of Hispanic Professionals.*



# Wake County Career and College Promise

- Enrollment as of 6/20
  - 1,912 students (60% increase)
  - 462 FTE (43% increase)





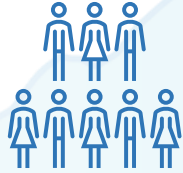
# WAKE EARLY COLLEGE

of Information & Biotechnologies

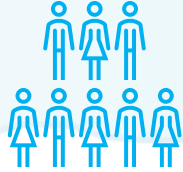


# Enrollment

**70,000**  
STUDENTS



**1,400**  
EMPLOYEES



# 9 locations

1. Southern Wake Campus
2. Scott Northern Wake Campus
3. Perry Health Sciences Campus
4. Public Safety Education Campus
5. RTP Campus
6. Western Wake Campus
7. Beltline Education Center
8. Eastern Wake Education Center
9. Eastern Wake 4.0



# EAST WAKE 4.0 CAMPUS – SOUTH BIRDS-EYE



# EAGLE START Bridge Program

- “Implement a Summer Bridge Program that helps students gain early momentum at Wake Tech through early engagement and the completion of transition courses needed to enter college-level English and math.”
  - Summer 2022
    - 129 applicants; 114 accepted; 91 confirmed attendees
      - 43% African American; 26% Hispanic/Latino
      - 2.2 HS GPA or below
    - 6-week program – June 27 – August 4
    - ACA 090 (College Success); Developmental Reading and Math to reach concurrent status.



# Career Ladders

- *“With input from employers, create dynamic career ladders around stackable AAS degree and diploma paths that include robust and data informed career development.”*
- *Primary Ladder Rungs (Backward Mapping/Forward Scaffolding)*
  - *Career and College Promise Pathways*
  - *Workforce Continuing Education Entry/Certifications*
  - *Stackable Applied Degrees*
  - *Work-based Learning Apprenticeship*
  - *Strategic University Transfer Partners*
- *WakeWorks – Youth Apprenticeship*



# Biopharma





Apprenticeships  
ensure a  
**DIRECT PATHWAY**  
to the workforce.

