



Swift Creek Elementary School

DEMOLITION AND REBUILD

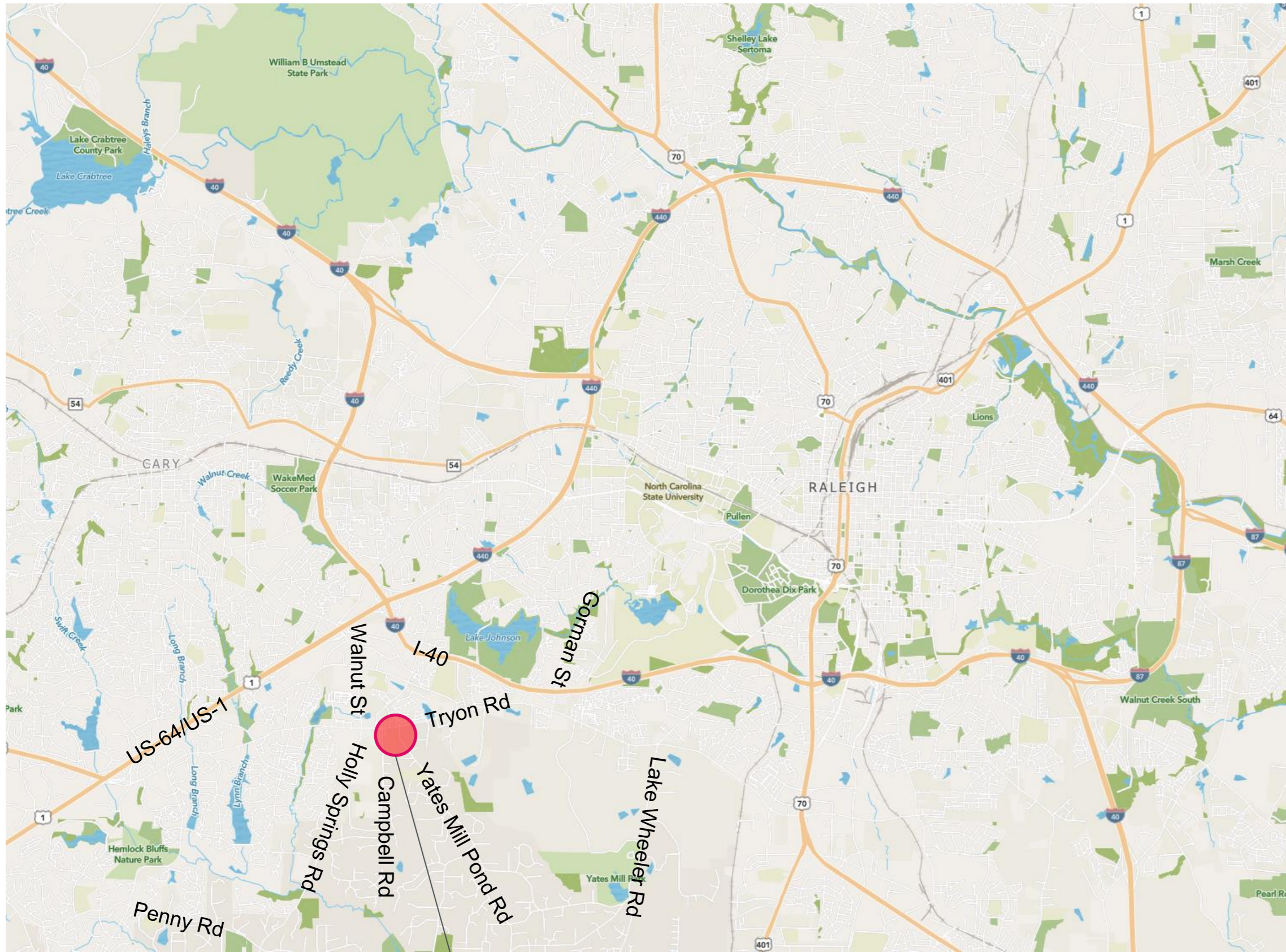
SCHEMATIC DESIGN – FACILITIES COMMITTEE MEETING.

M. Elizabeth Wakeford, Senior Facility Planner, FD+C

Alice Reese, Senior Site Planner, FD+C

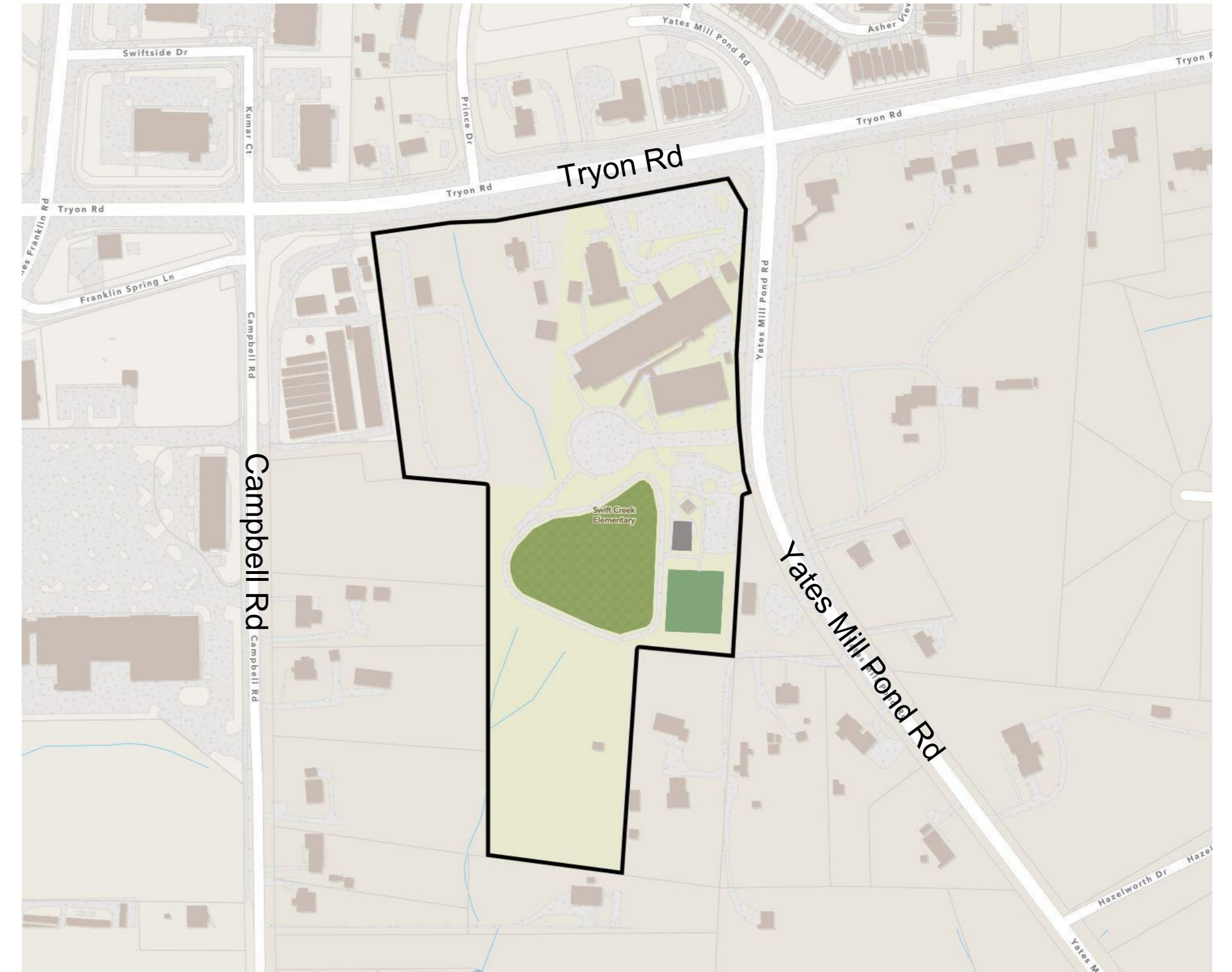
September 14, 2022

Swift Creek ES - Vicinity and Site Maps



LOCATION MAP

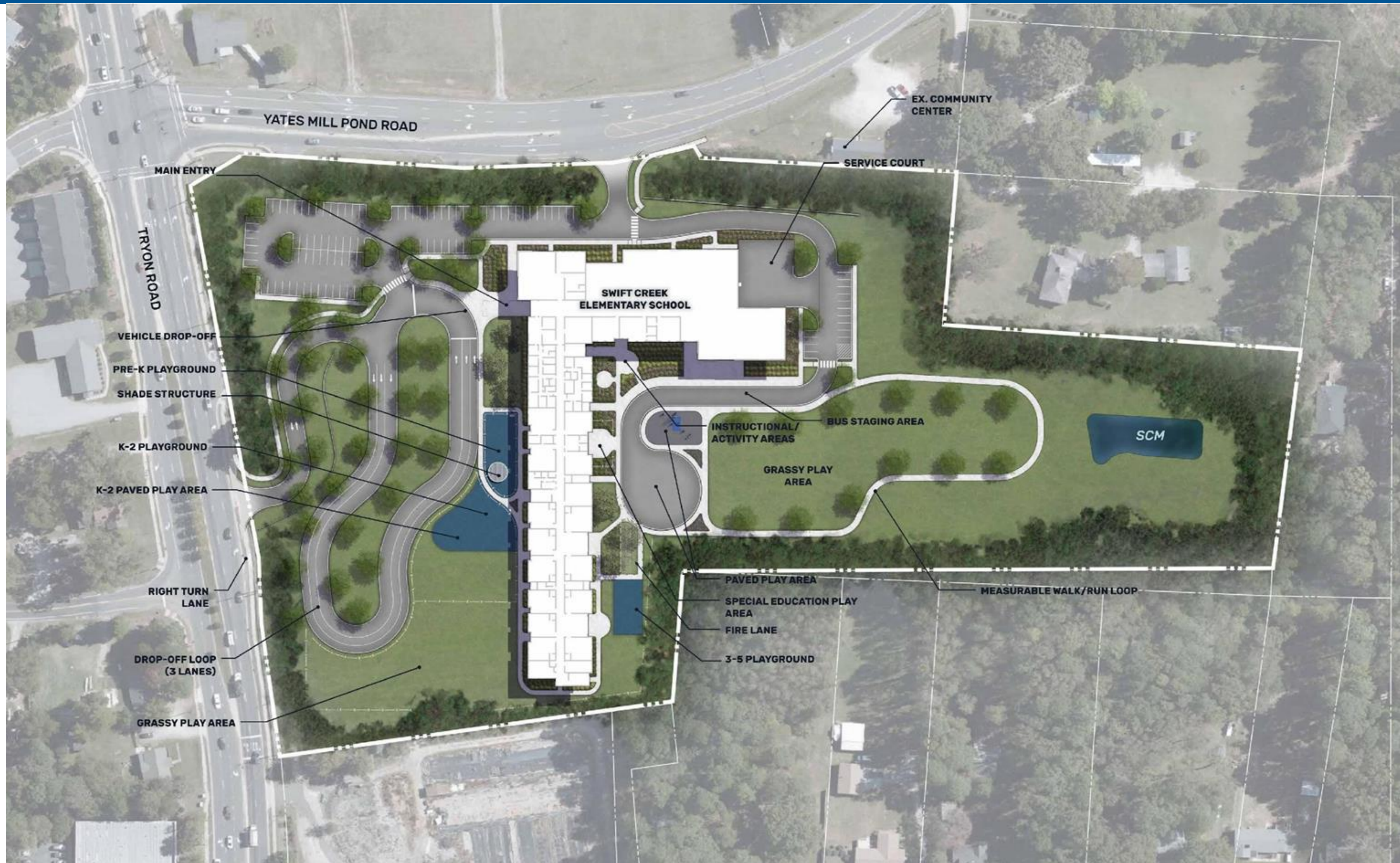
SWIFT CREEK ELEMENTARY SCHOOL



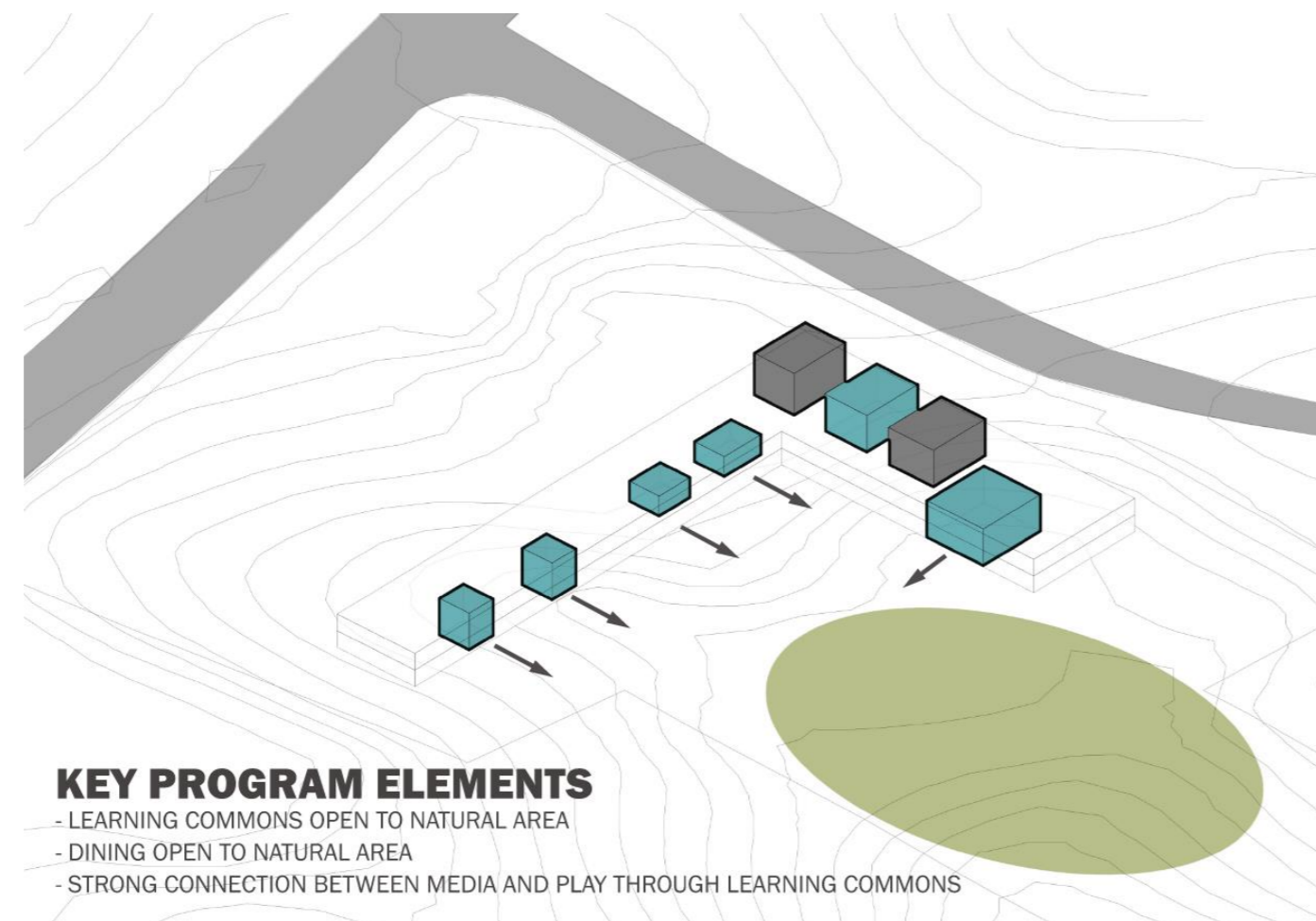
VICINITY MAP



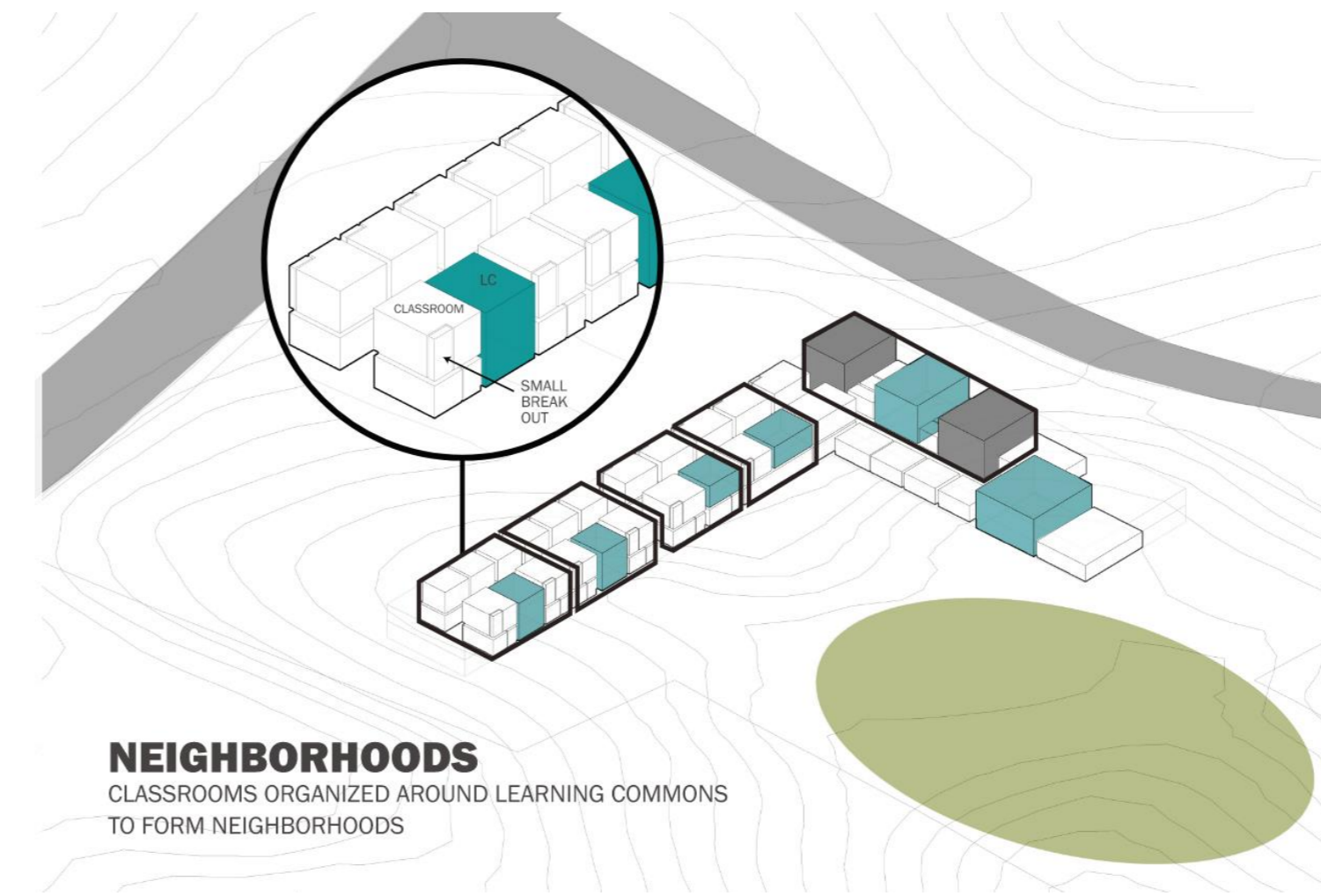
Swift Creek ES - Proposed Site Plan



Swift Creek ES – Project Goals

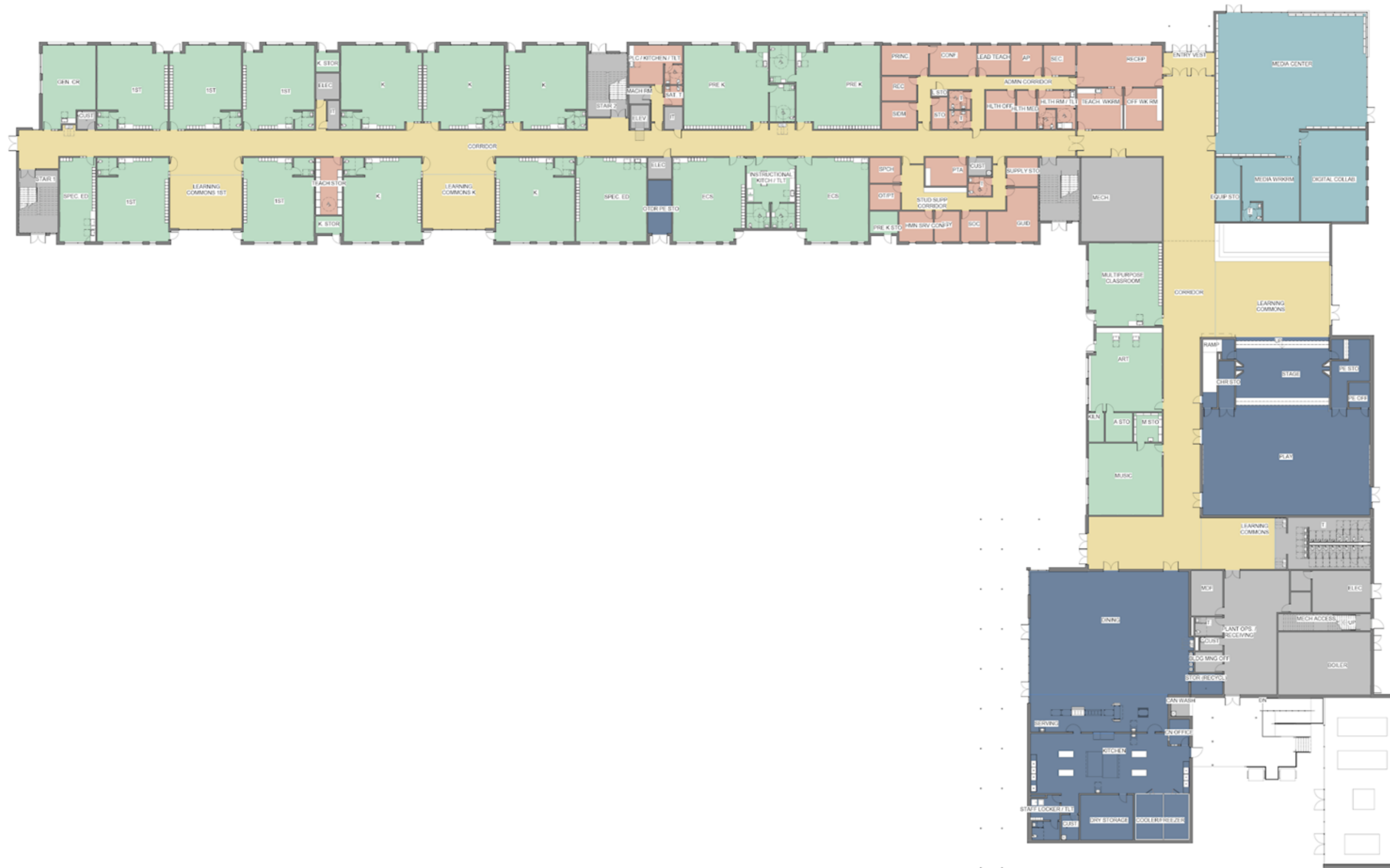


Organize Key program elements so that views and access to the outdoors are maximized.

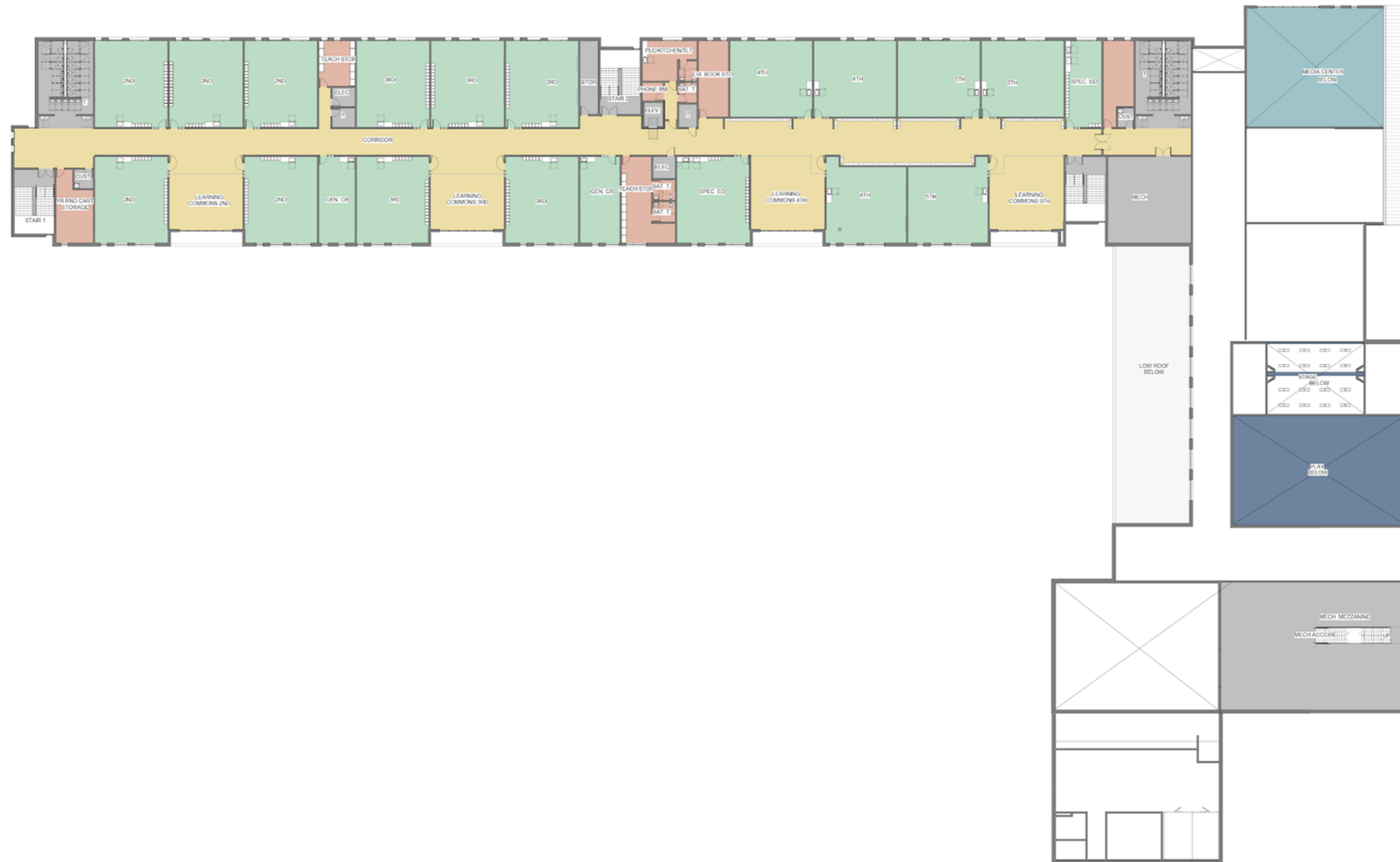


Organize Classroom spaces around learning commons to create a neighborhood for each grade level and promote collaboration.

Swift Creek ES - Proposed 1st Floor Plan



Swift Creek ES - Proposed 2nd Floor Plan



Swift Creek ES - Main Entry View from Tryon Rd.



Swift Creek ES - Learning Commons



Swift Creek ES

Thank you!

Questions...