

WCPSS 2023-2024 Enrollment Plan

Draft #1

A Multi-year Approach to Growth Management

Prepared by the Office of Student Assignment

Board of Education Work Session
September 20, 2022

Purpose

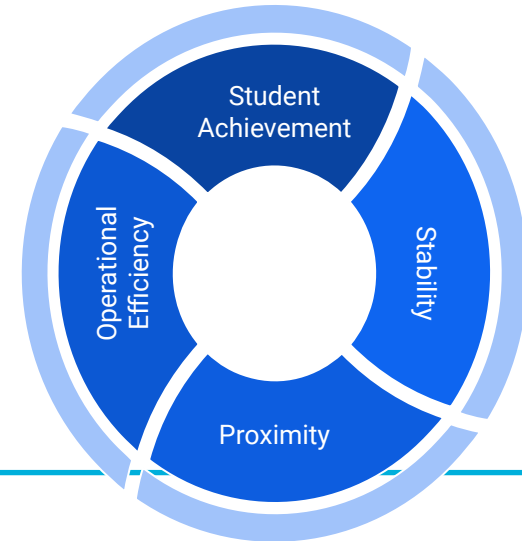
Staff is here today to share the first draft of the 2023-2024 Enrollment Plan.

Our goal for today's meeting is to share information related to the development of the first draft and to solicit feedback from the Board, so that staff may prepare a revised (Draft #2) 2023-2024 Enrollment Plan.

WCPSS Board Policy 4150: School Assignment and Transfers

Section A. Drawing of School Attendance Areas

1. The assignment areas will be developed by balancing, to the extent reasonable, the goals and factors set forth below and will include target ranges, where appropriate, to accomplish these goals and factors:
 - a. **Student Achievement**
 - b. **Stability**
 - c. **Proximity**
 - d. **Operational Efficiency**



Overview

- **Updates**

- Public Engagement Progress
- Capped Schools
- Current Capital Improvement Plan (CIP)

- **Enrollment Plan Recommendations**

- Base Assignment Changes
- Calendar Application Changes
- Stability Rules for 2023-24

- **Timeline / Next Steps**

- **Addendum**



Updates

Public Engagement Progress: ThoughtExchange

ThoughtExchange Summary:

June 10 - June 29, 2022:

“What are the most important factors for a school to be a good fit for your family?”



2,832
Participants



2,579
Thoughts




56,248
Ratings

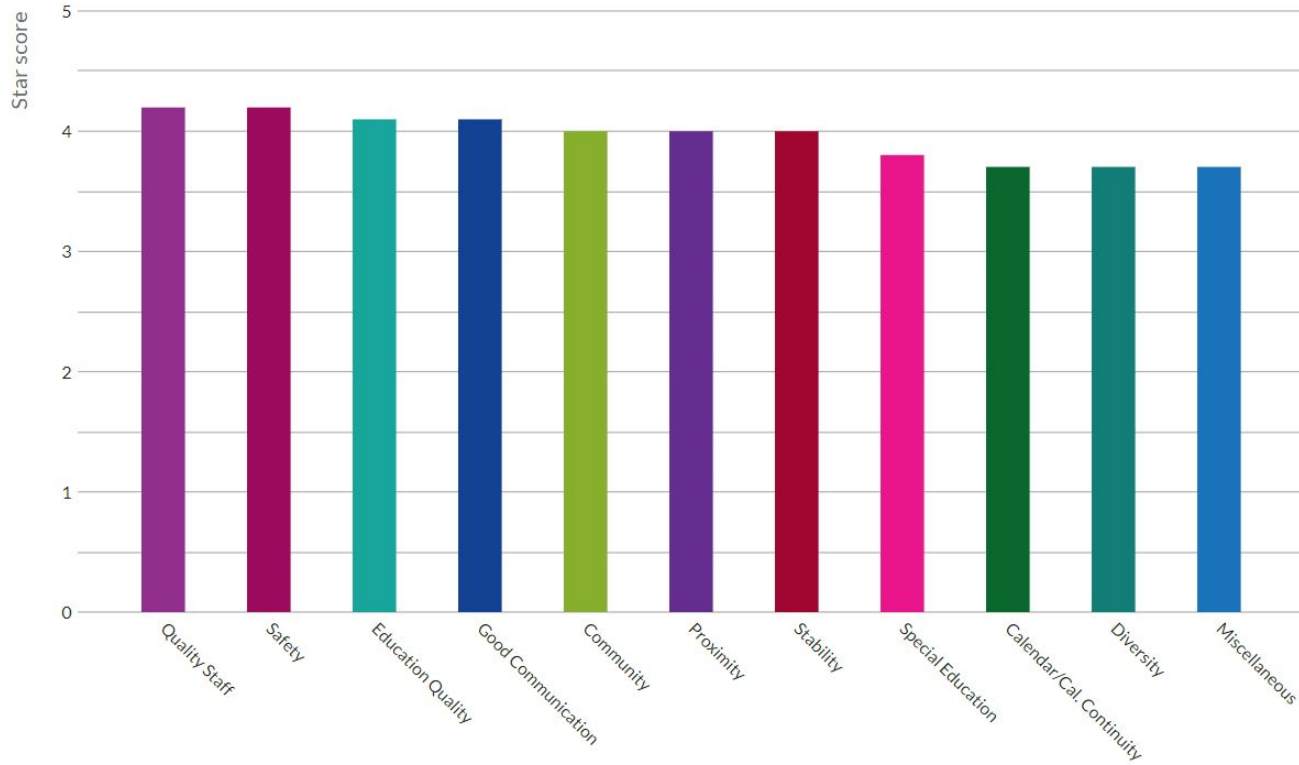
Which of the following best describes you?



2803
Responses

%		Answer (Multi-select)
4%	(130)	Community Member
97%	(2719)	Parent
6%	(173)	Staff Member
0%	(7)	Student

Public Engagement Progress: ThoughtExchange



Public Engagement Progress: Focus Groups

Focus Group Summary

July / August 2022:

- Based on responses from ThoughtExchange, **education quality** and **proximity** surfaced as important factors
- Partnered with Data, Research and Accountability staff to conduct focus groups to gain a deeper understanding of these two factors with respect to operational efficiency
- Held three separate sessions with 6-10 participants per session that focused on four core questions during each session

Public Engagement Progress: Focus Groups

Focus Group Summary

- Key takeaways include:
 - **clear communication** regarding the goals of student assignment, how year-round schools work, and why assignment decisions are made is helpful to families
 - **year-round calendar** may be used to reduce the need for capping or reassignment in high growth areas, while offering stability of school assignment for families
 - **proximate school assignments** may increase family involvement, and ultimately student achievement
 - **strong, educated teachers** is a significant factor for a family's perception of a high quality school

Public Engagement Progress: Next Steps

Draft #1 Public Engagement Activities

- September 20:
 - District website is updated with Draft 1 information (wcpss.net/2023enrollmentproposal)
- September 20 - October 7:
 - Open New ThoughtExchange: “What are your thoughts or questions about the proposed changes?” (wcpss.net/draft1feedback)
- September 28 - October 6:
 - Host Regionally Focused Virtual Public Information Sessions
 - September 28, 6:00-7:30 pm - Central Area & Northern Area
 - September 29, 6:00-7:30 pm - Southeast Raleigh, Eastern Area & Northeastern Area
 - October 5, 6:00-7:30 pm - Southeastern Area & Southern Area
 - October 6, 6:00-7:30 pm - Southwestern Area & Western Area

Capped Schools

Elementary Schools

- Abbotts Creek
- Alston Ridge
- Apex
- Beaverdam
- Cedar Fork
- Highcroft
- Holly Grove
- Holly Ridge
- Hortons Creek
- Mills Park
- Northwoods
- Oakview
- Olive Chapel
- Parkside
- River Bend
- Scotts Ridge
- Sycamore Creek
- Weatherstone
- White Oak

Middle Schools

- Apex Friendship
- Mills Park

High Schools

- Apex Friendship
- Heritage
- Panther Creek

Current CIP: Seven-year Plan for Future School Openings*

Code	School Name	2021-22	2022-23	2023-24	2024-25	2025-26	2026-27	2027-28
H13	Willow Spring HS	H13 HS Lrg						
E24	Barton Pond ES	Brassfield ES	E24 ES					
E41	Apex Friendship ES		E41 ES					
M14	Herbert Akins Road MS		M14 MS					
E51	Woods Creek ES		Baucom ES	Baucom ES	E51 ES			
E44	Hilltop Needmore ES					E44 ES		
E52	Rex Road ES					E52 ES		
E49	Bowling Road ES					E49 ES		
H12	Felton Grove HS					H12 HS Lrg		
E53	Pleasant Plains ES					E53 ES		
M19/H11	Parkside MS/ Wake EC of Infor. & Biotech.					M19/H11 Sm		
H14	Morrisville Area HS (unnamed)							H14 HS Sm
	Swing Space: A new school serves as a swing space for an existing school's renovation before opening with its own population.							

This seven-year plan is designed with flexibility, so that it may be reviewed annually by WCPSS staff and Wake County Planners.

**Note: Market volatility has the potential to impact scheduled project completion dates.*



Enrollment Plan Recommendations



Base Assignment Changes

Base School Impacts (2023-24) – Elementary School

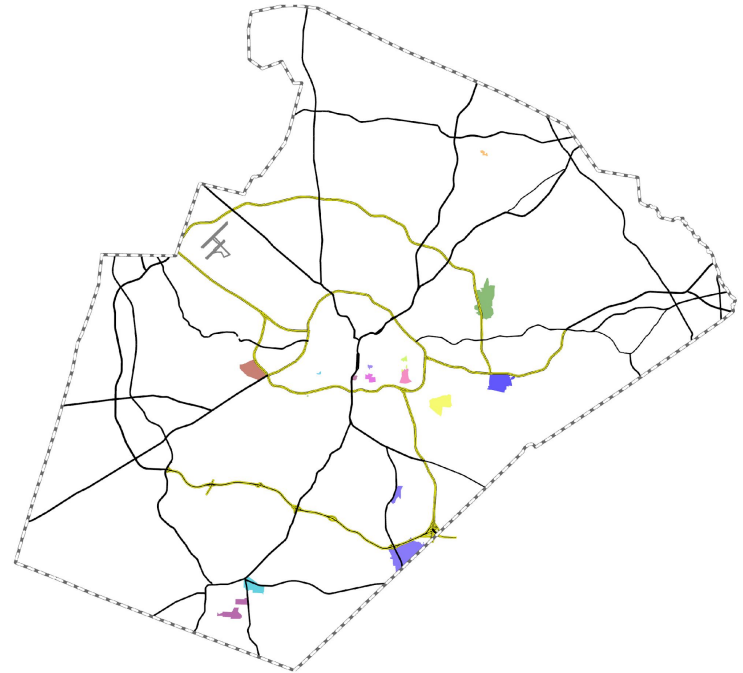
Base Attendance Areas Impacted:

Sending Schools:

Barwell Road
Beaverdam
Bryan Road
Combs
Dillard Drive
Farmington Woods
Heritage
Hodge Road
Laurel Park
North Ridge
Oak Grove
Olds
South Lakes
Swift Creek

Receiving Schools:

Adams
Aversboro
Bugg
Dillard Drive
Forestville Road
Fuller
Fuquay-Varina
Hunter
Knightdale
Swift Creek
Wake Forest
Walnut Creek
Washington
Wiley
Willow Springs



Base School Impacts (2023-24) – Middle School

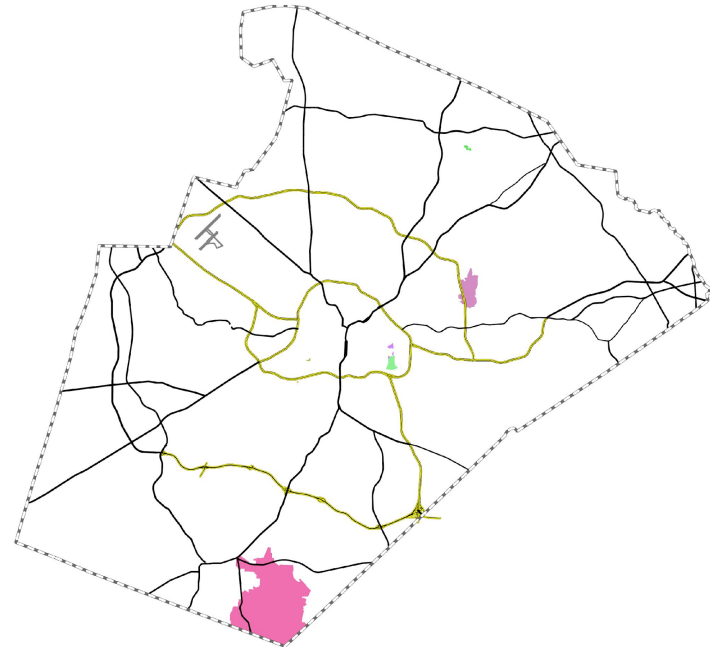
Base Attendance Areas Impacted:

Sending Schools:

Centennial
Dillard Drive
Fuquay-Varina
Heritage
River Bend
West Millbrook

Receiving Schools:

Centennial
Dillard Drive
Herbert Akins Road
Ligon
Neuse River
Oberlin
Wake Forest



Base School Impacts (2023-24) – High School

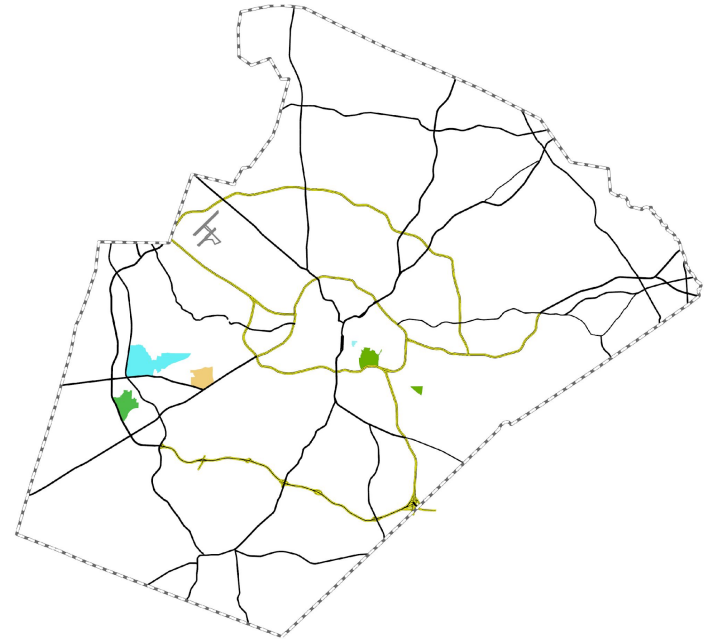
Base Attendance Areas Impacted:

Sending Schools:

Apex
Apex Friendship
Broughton
Enloe
Garner
Sanderson

Receiving Schools:

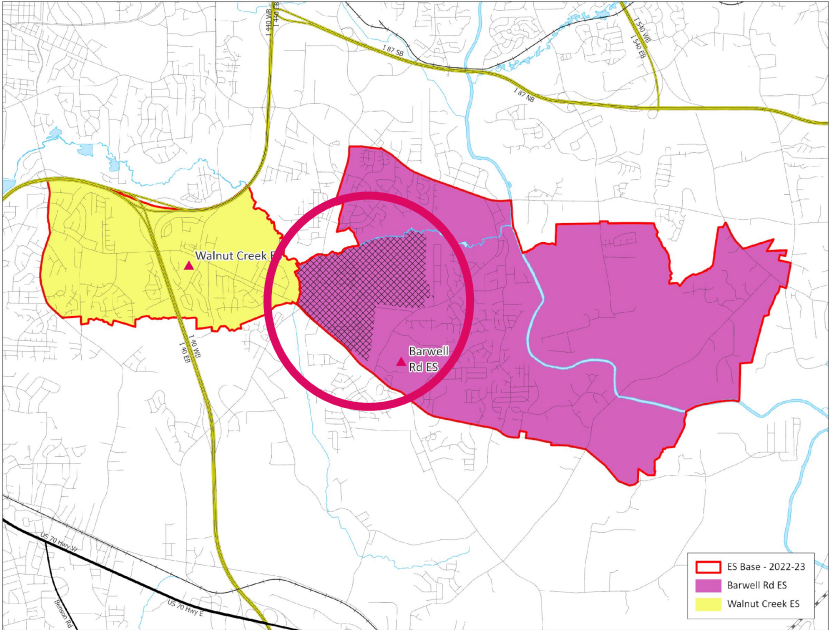
Apex
Broughton
Cary
Green Hope
Southeast Raleigh



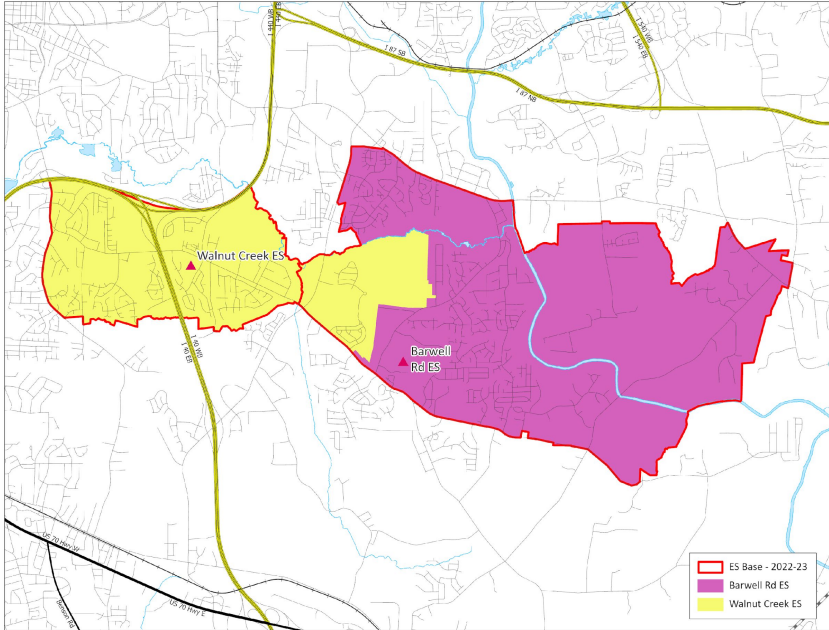


Southeast Raleigh, Eastern Area & Northeastern Area

Existing Schools – Walnut Creek ES (from Barwell Road ES)



Impacted Areas:



Proposed Base Areas

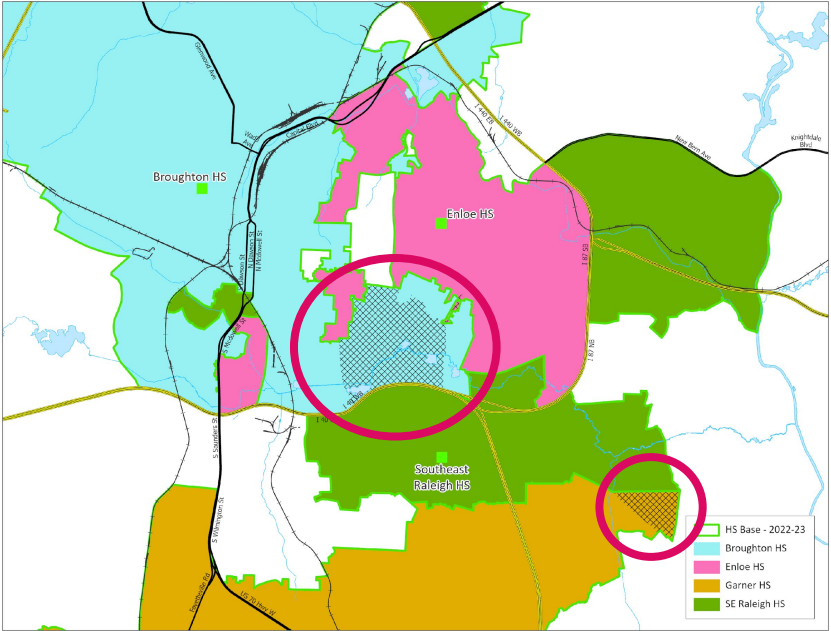
Existing Schools – Walnut Creek ES (from Barwell Road ES)

2022-23 Base School	Calendar	Capacity w/ Trailers	2023-24 Util w/ Trl	2025-26 Util w/ Trl
Barwell Rd ES	S-T	616	120%	145%
Walnut Creek ES	S-T	656	82%	85%

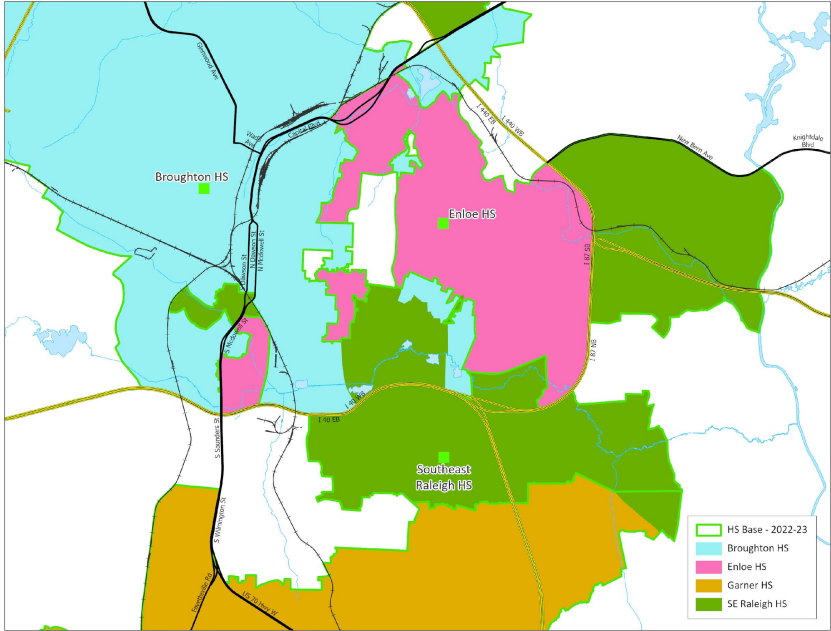
Proposed 2023-24 Base School	Calendar	Capacity w/ Trailers	2023-24 Util w/ Trl	2025-26 Util w/ Trl
Barwell Rd ES	S-T	616	120%	134%
Walnut Creek ES	S-T	656	82%	95%

- M-T – Multi-Track Year-Round Calendar
- S-T – Single Track Year-Round Calendar
- T – Traditional Calendar
- Base % = Percentage of WCPSS students within base attending the base school
- Util = Utilization based on 2022-23 capacity, updated May 2022
- Util w/ Trl = Utilization with Trailers

Existing Schools – Southeast Raleigh HS (from Broughton, Enloe & Garner HS)



Impacted Areas: 



Proposed Base Areas

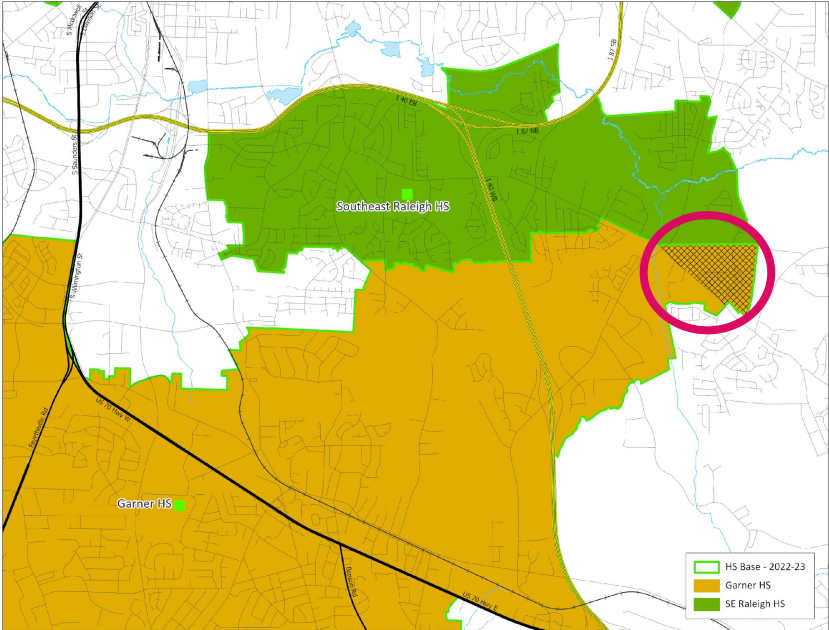
Existing Schools – Southeast Raleigh HS (from Broughton, Enloe & Garner HS)

2022-23 Base School	Calendar	Capacity w/ Trailers	2023-24 Util w/ Trl	2025-26 Util w/ Trl
Broughton HS	T	2064	104%	104%
Enloe HS	T	2415	105%	104%
Garner HS	T	2240	78%	74%
Southeast Raleigh HS	M	1967	79%	76%

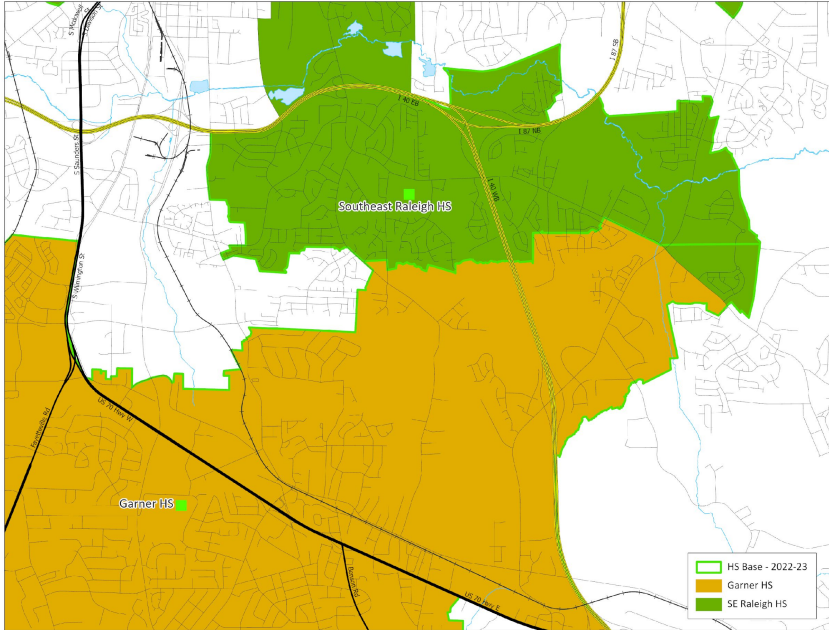
Proposed 2023-24 Base School	Calendar	Capacity w/ Trailers	2023-24 Util w/ Trl	2025-26 Util w/ Trl
Broughton HS	T	2064	100%	100%
Enloe HS	T	2415	105%	103%
Garner HS	T	2240	78%	73%
Southeast Raleigh HS	M	1967	84%	81%

- M-T – Multi-Track Year-Round Calendar
- S-T – Single Track Year-Round Calendar
- T – Traditional Calendar
- Base % = Percentage of WCPSS students within base attending the base school
- Util = Utilization based on 2022-23 capacity, updated May 2022
- Util w/ Trl = Utilization with Trailers

Existing Schools – Southeast Raleigh HS (from Garner HS)

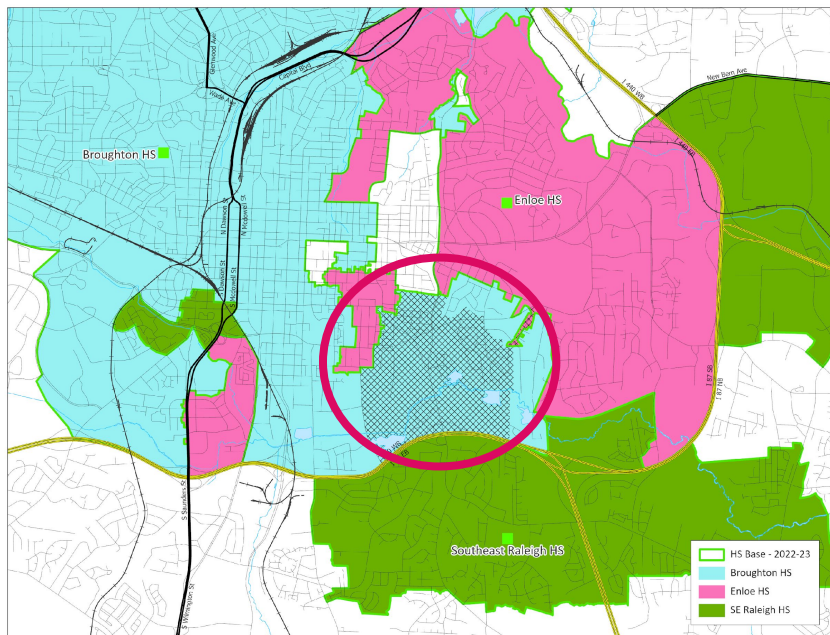


Impacted Areas:

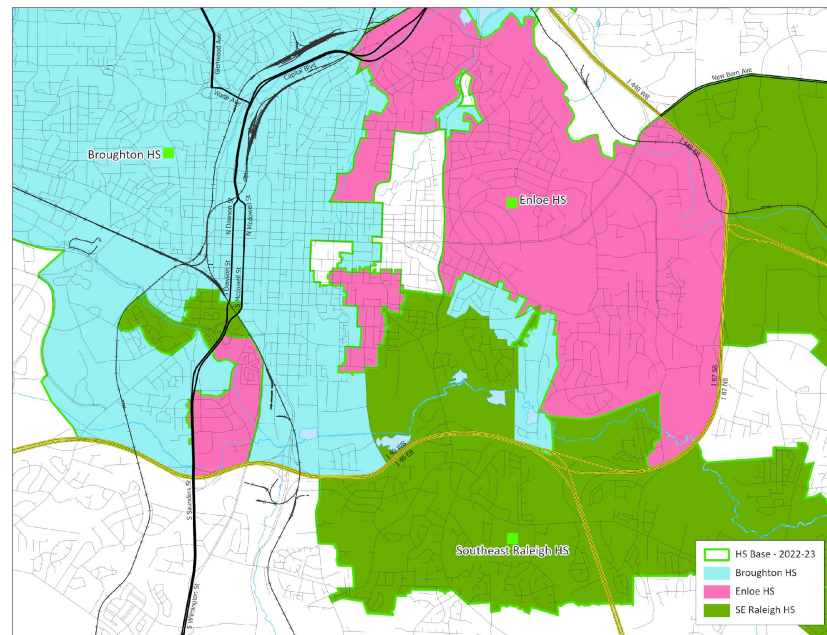


Proposed Base Areas

Existing Schools – Southeast Raleigh HS (from Broughton & Enloe HS)

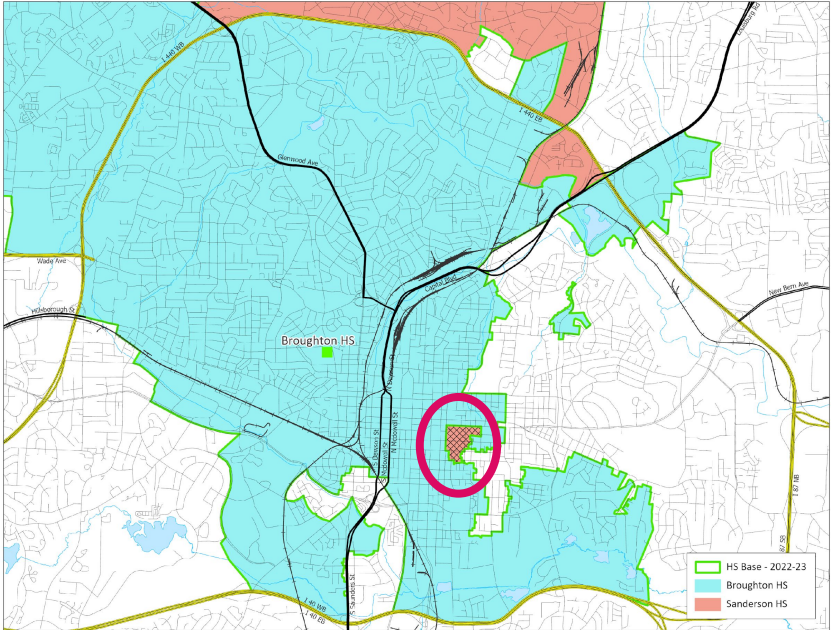


Impacted Areas:

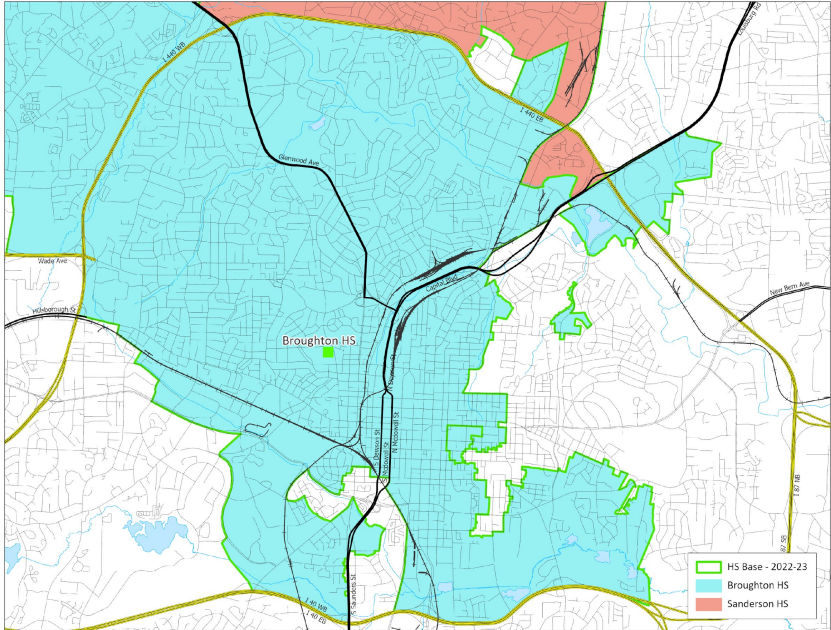


Proposed Base Areas

Existing Schools – Broughton HS (from Sanderson HS)



Impacted Areas:



Proposed Base Areas

Existing Schools – Broughton HS (from Sanderson HS)

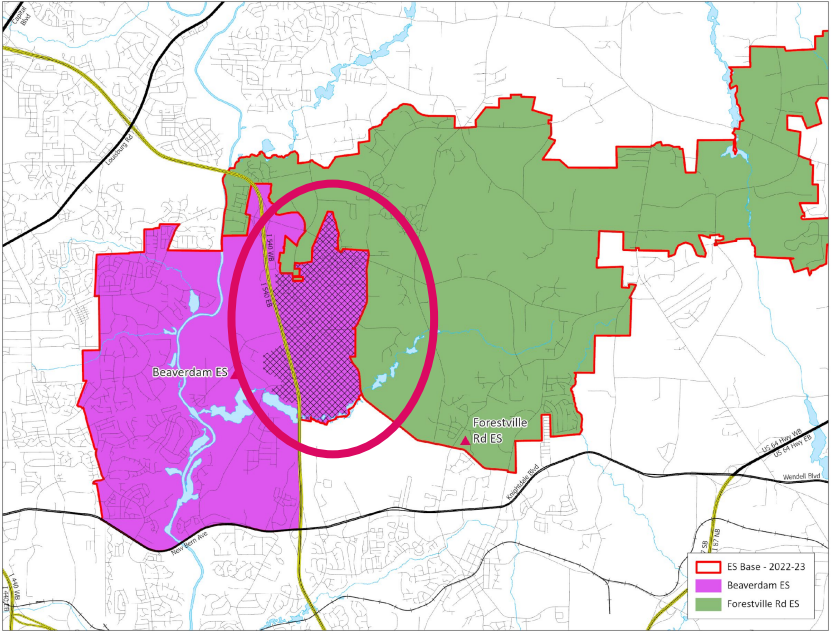
2022-23 Base School	Calendar	Capacity w/ Trailers	2023-24 Util w/ Trl	2025-26 Util w/ Trl
Broughton HS	T	2064	104%	104%
Sanderson HS	T	1967	86%	87%

Proposed 2023-24 Base School	Calendar	Capacity w/ Trailers	2023-24 Util w/ Trl	2025-26 Util w/ Trl
Broughton HS	T	2064	100%	100%
Sanderson HS	T	1967	85%	86%

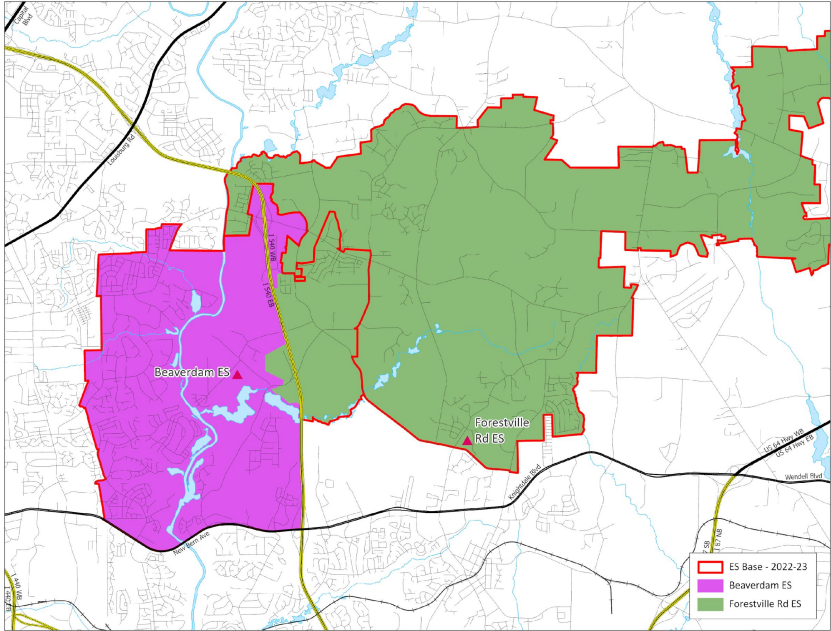
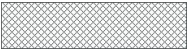
- M-T – Multi-Track Year-Round Calendar
- S-T – Single Track Year-Round Calendar
- T – Traditional Calendar
- Base % = Percentage of WCPSS students within base attending the base school
- Util = Utilization based on 2022-23 capacity, updated May 2022
- Util w/ Trl = Utilization with Trailers

NOTE: Broughton HS is impacted by other assignment adjustments

Existing Schools – Forestville Road ES (from Beaverdam ES)



Impacted Areas:



Proposed Base Areas

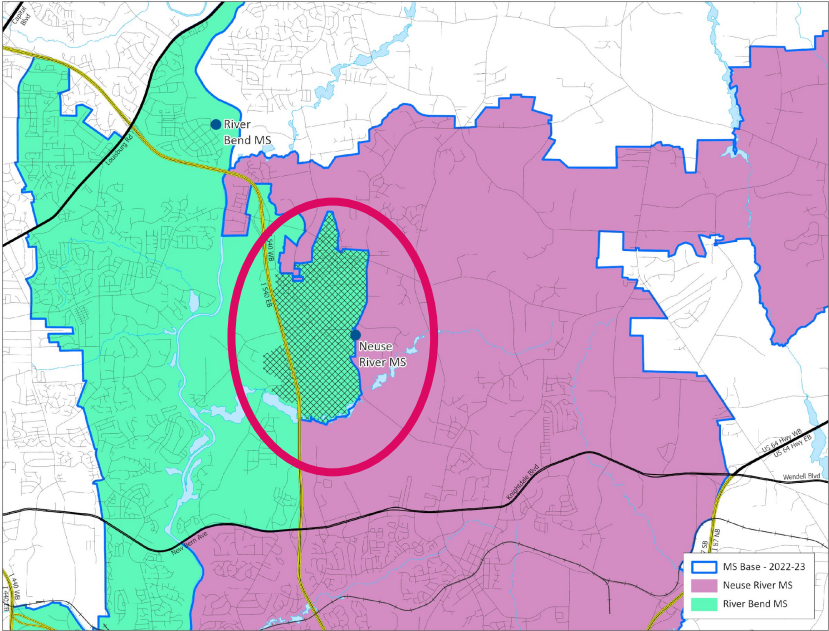
Existing Schools – Forestville Road ES (from Beaverdam ES)

2022-23 Base School	Calendar	Capacity w/ Trailers	2023-24 Util w/ Trl	2025-26 Util w/ Trl
Beaverdam ES	T	696	105%	114%
Forestville Rd ES	T	628	80%	90%

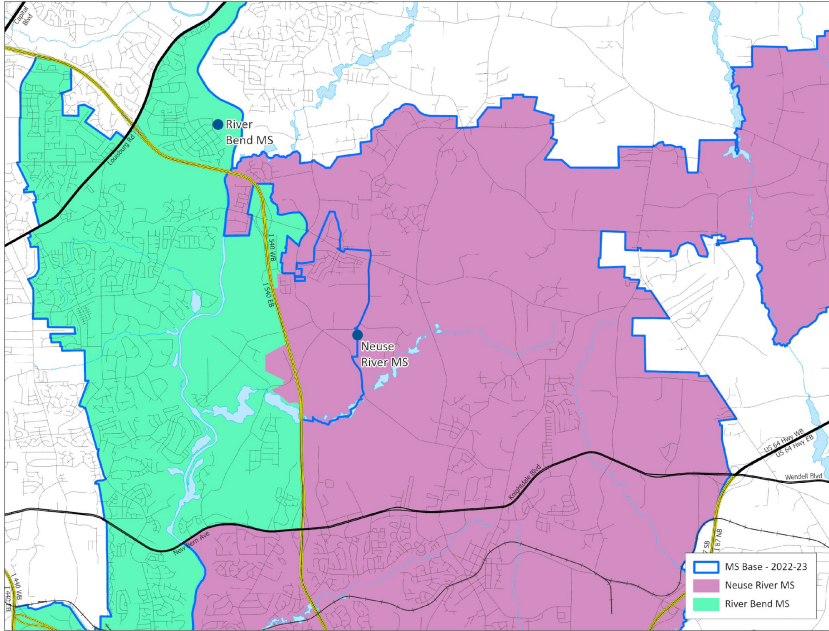
Proposed 2023-24 Base School	Calendar	Capacity w/ Trailers	2023-24 Util w/ Trl	2025-26 Util w/ Trl
Beaverdam ES	T	696	96%	105%
Forestville Rd ES	T	628	90%	100%

- M-T – Multi-Track Year-Round Calendar
- S-T – Single Track Year-Round Calendar
- T – Traditional Calendar
- Base % = Percentage of WCPSS students within base attending the base school
- Util = Utilization based on 2022-23 capacity, updated May 2022
- Util w/ Trl = Utilization with Trailers

Existing Schools – Neuse River MS (from River Bend MS)



Impacted Areas:



Proposed Base Areas

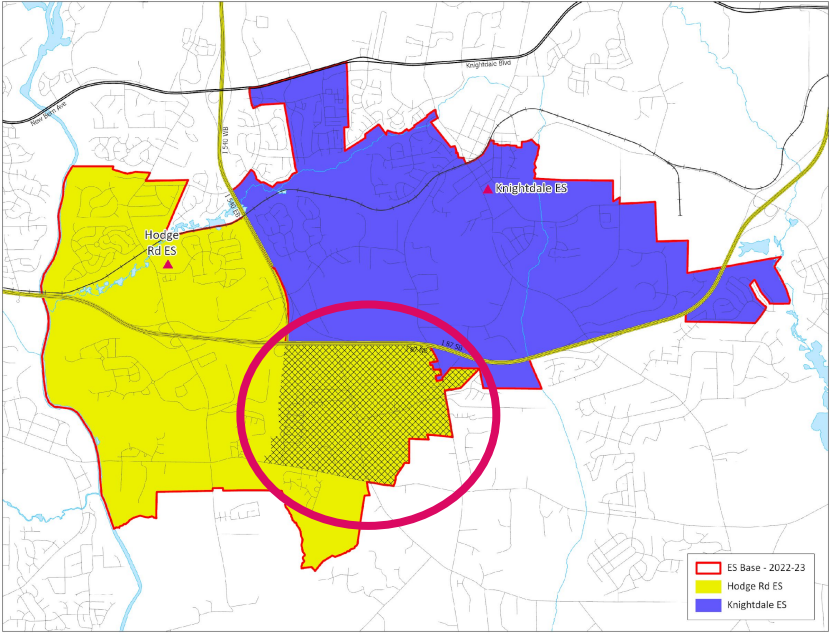
Existing Schools – Neuse River MS (from River Bend MS)

2022-23 Base School	Calendar	Capacity w/ Trailers	2023-24 Util w/ Trl	2025-26 Util w/ Trl
Neuse River MS	M	1248	77%	76%
River Bend MS	T	1248	95%	91%

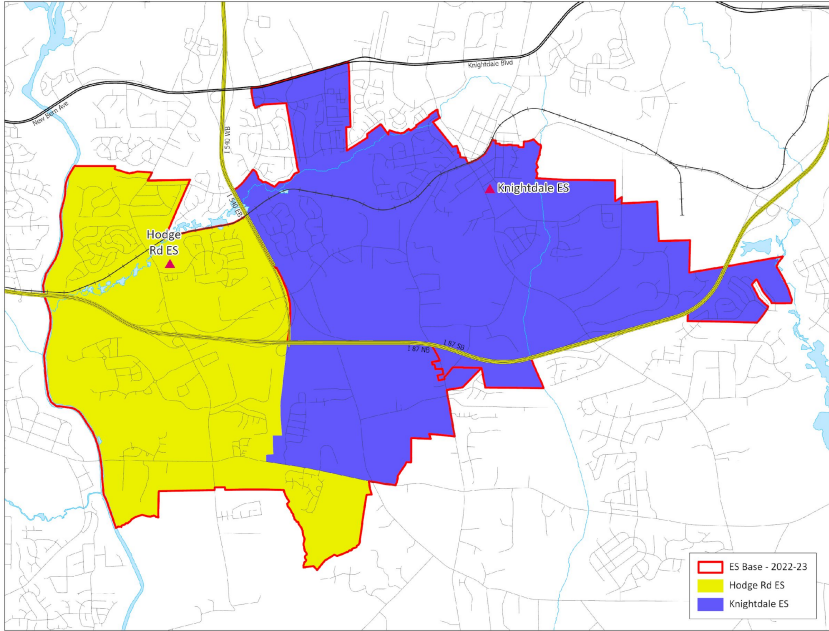
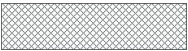
Proposed 2023-24 Base School	Calendar	Capacity w/ Trailers	2023-24 Util w/ Trl	2025-26 Util w/ Trl
Neuse River MS	M	1248	80%	80%
River Bend MS	T	1248	92%	88%

- M-T – Multi-Track Year-Round Calendar
- S-T – Single Track Year-Round Calendar
- T – Traditional Calendar
- Base % = Percentage of WCPSS students within base attending the base school
- Util = Utilization based on 2022-23 capacity, updated May 2022
- Util w/ Trl = Utilization with Trailers

Existing Schools – Knightdale ES (from Hodge Road ES)



Impacted Areas:



Proposed Base Areas

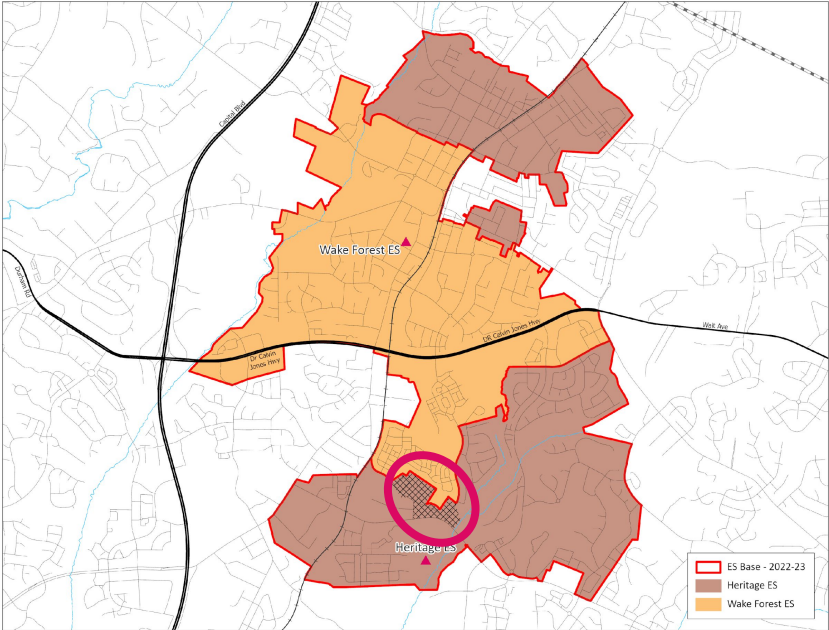
Existing Schools – Knightdale ES (from Hodge Road ES)

2022-23 Base School	Calendar	Capacity w/ Trailers	2023-24 Util w/ Trl	2025-26 Util w/ Trl
Hodge Rd ES	S-T	470	109%	114%
Knightdale ES	T	648	79%	79%

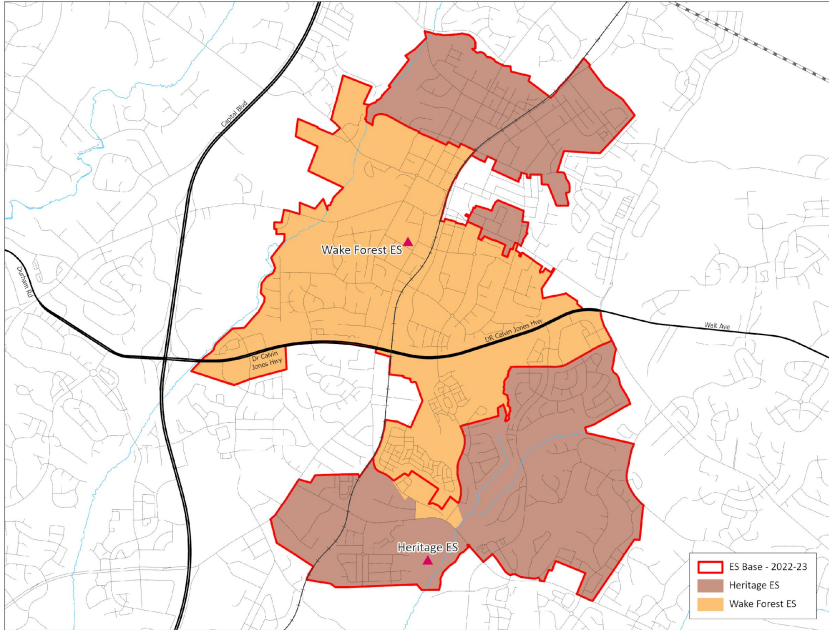
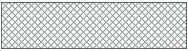
Proposed 2023-24 Base School	Calendar	Capacity w/ Trailers	2023-24 Util w/ Trl	2025-26 Util w/ Trl
Hodge Rd ES	S-T	470	104%	109%
Knightdale ES	T	648	83%	83%

- M-T – Multi-Track Year-Round Calendar
- S-T – Single Track Year-Round Calendar
- T – Traditional Calendar
- Base % = Percentage of WCPSS students within base attending the base school
- Util = Utilization based on 2022-23 capacity, updated May 2022
- Util w/ Trl = Utilization with Trailers

Existing Schools – Wake Forest ES (from Heritage ES)



Impacted Areas:



Proposed Base Areas

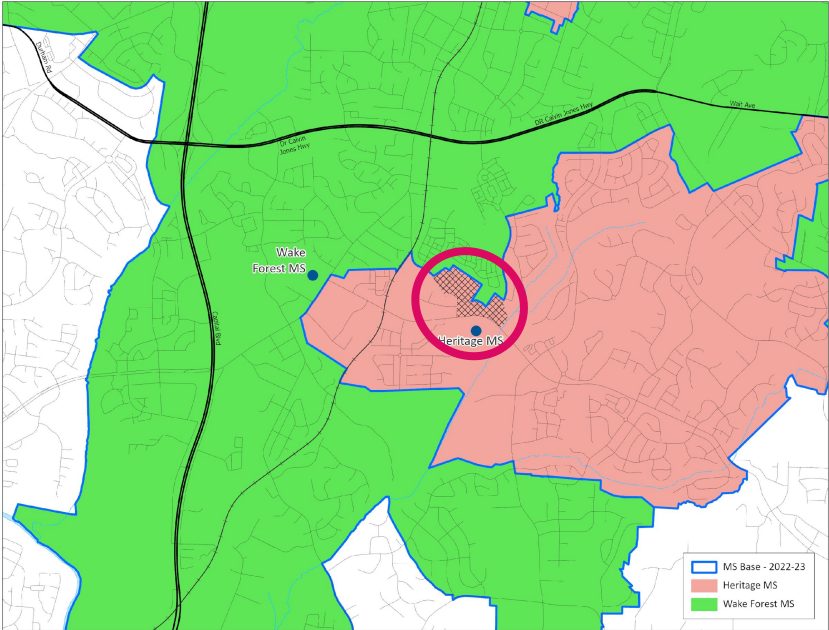
Existing Schools – Wake Forest ES (from Heritage ES)

2022-23 Base School	Calendar	Capacity w/ Trailers	2023-24 Util w/ Trl	2025-26 Util w/ Trl
Heritage ES	M-T	776	82%	77%
Wake Forest ES	T	508	70%	78%

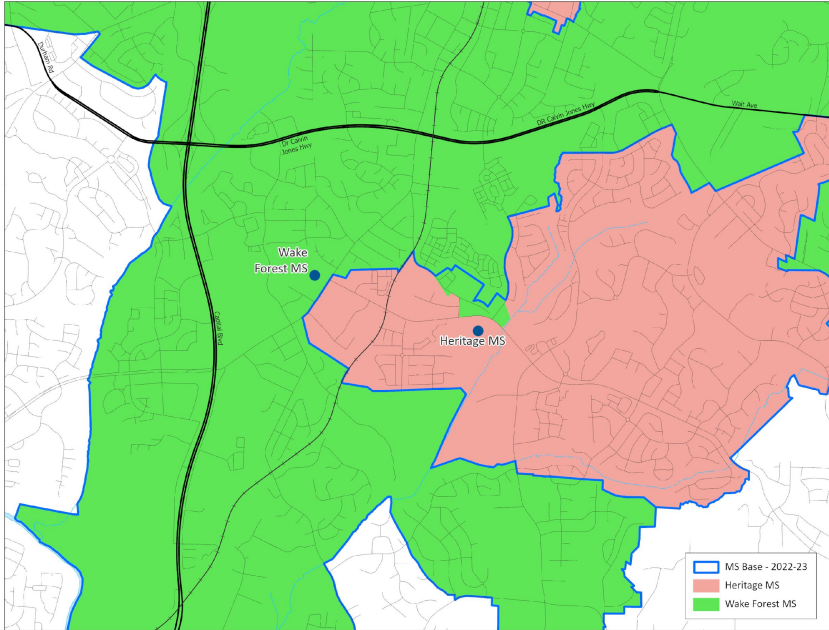
Proposed 2023-24 Base School	Calendar	Capacity w/ Trailers	2023-24 Util w/ Trl	2025-26 Util w/ Trl
Heritage ES	M-T	776	81%	76%
Wake Forest ES	T	508	70%	79%

- M-T – Multi-Track Year-Round Calendar
- S-T – Single Track Year-Round Calendar
- T – Traditional Calendar
- Base % = Percentage of WCPSS students within base attending the base school
- Util = Utilization based on 2022-23 capacity, updated May 2022
- Util w/ Trl = Utilization with Trailers

Existing Schools – Wake Forest MS (from Heritage MS)



Impacted Areas:



Proposed Base Areas

Existing Schools – Wake Forest MS (from Heritage MS)

2022-23 Base School	Calendar	Capacity w/ Trailers	2023-24 Util w/ Trl	2025-26 Util w/ Trl
Heritage MS	M-T	1248	84%	80%
Wake Forest MS	T	1222	86%	91%

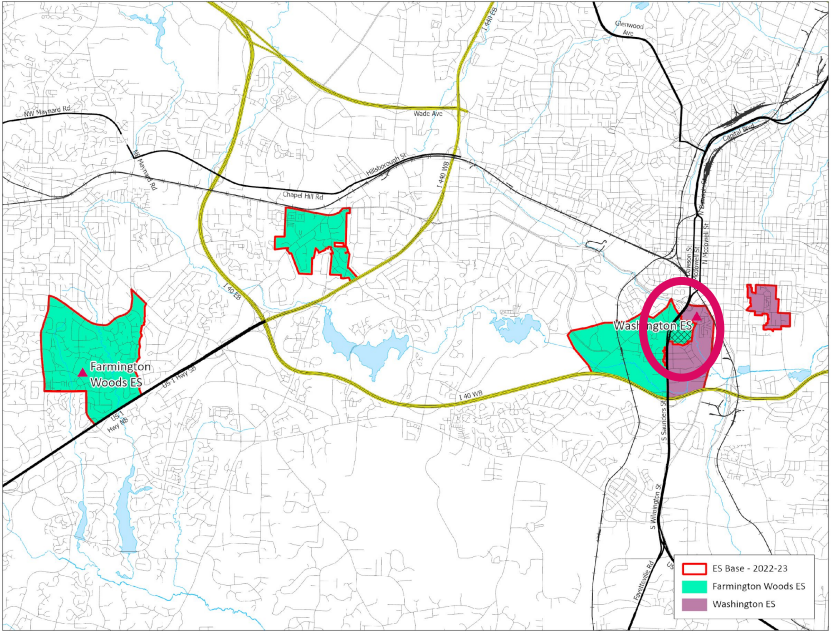
Proposed 2023-24 Base School	Calendar	Capacity w/ Trailers	2023-24 Util w/ Trl	2025-26 Util w/ Trl
Heritage MS	M-T	1248	84%	80%
Wake Forest MS	T	1222	86%	91%

- M-T – Multi-Track Year-Round Calendar
- S-T – Single Track Year-Round Calendar
- T – Traditional Calendar
- Base % = Percentage of WCPSS students within base attending the base school
- Util = Utilization based on 2022-23 capacity, updated May 2022
- Util w/ Trl = Utilization with Trailers

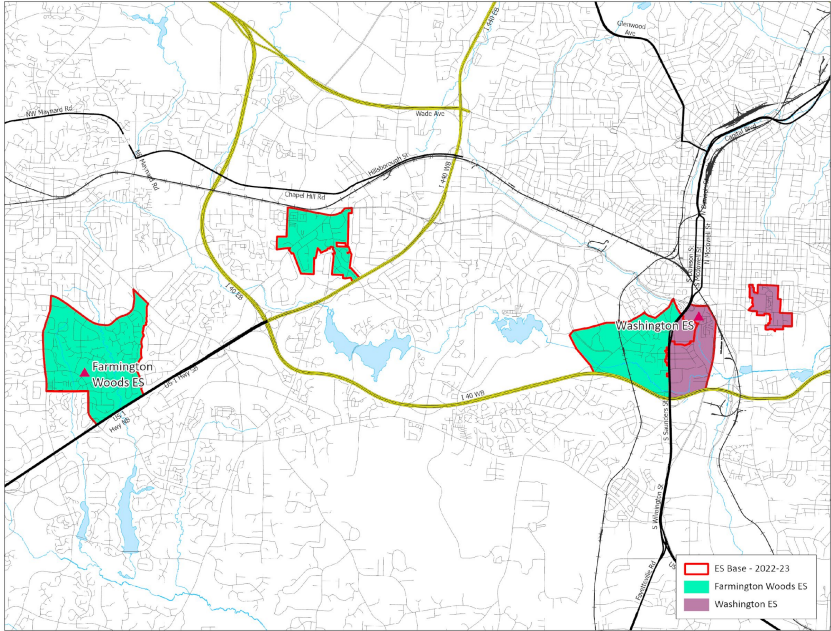
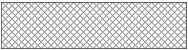


Central Area & Northern Area

Existing Schools – Washington ES (from Farmington Woods ES)



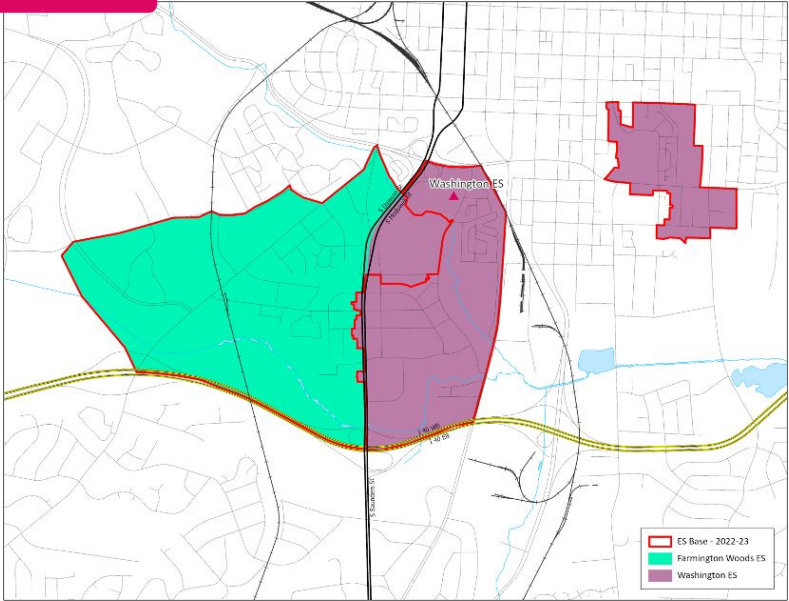
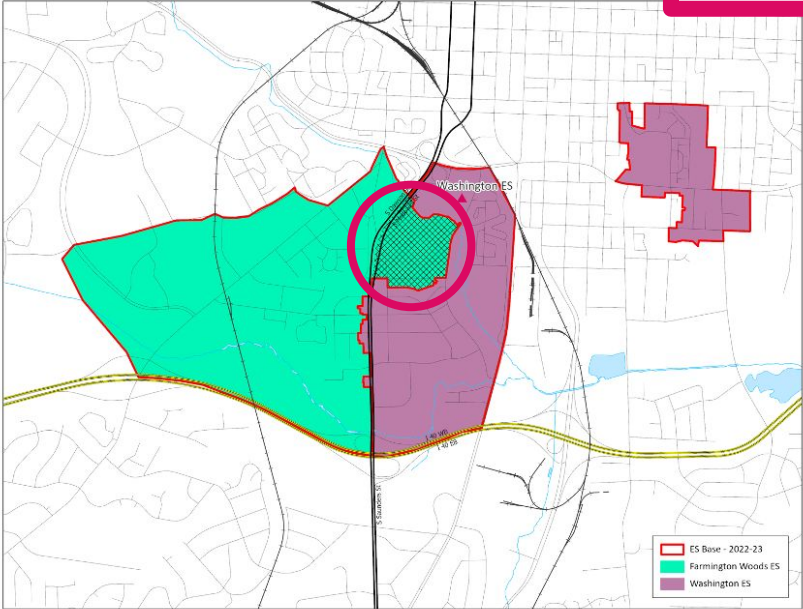
Impacted Areas:



Proposed Base Areas

Existing Schools – Washington ES (from Farmington Woods ES)

ZOOM



Impacted Areas: 

Proposed Base Areas

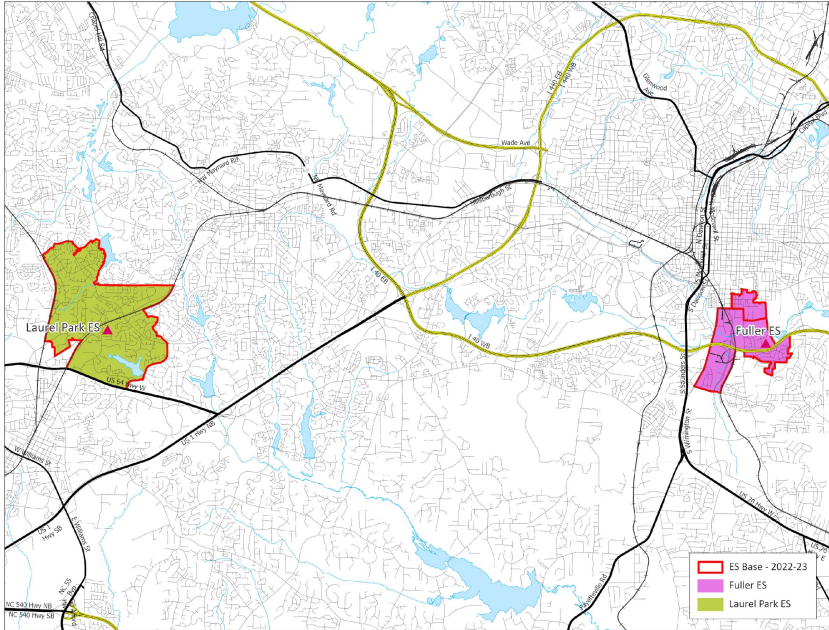
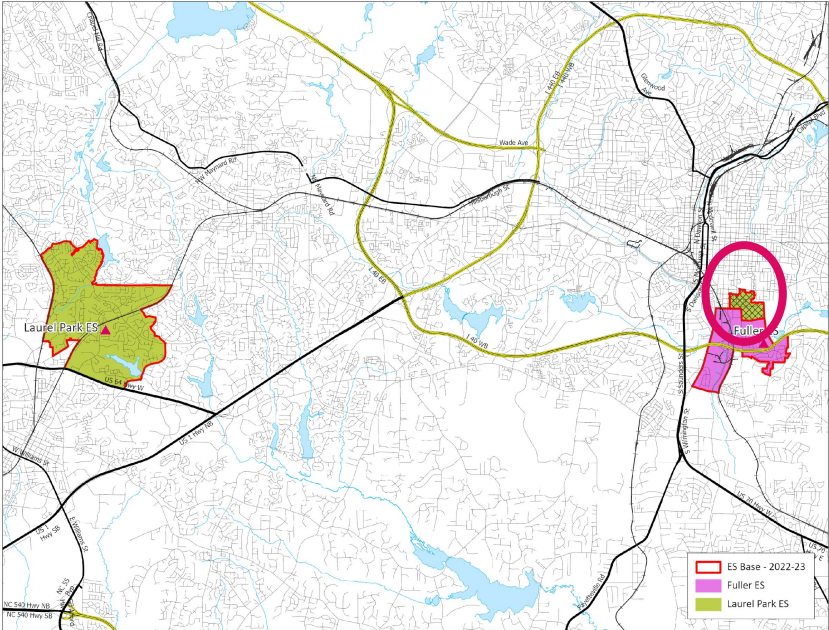
Existing Schools – Washington ES (from Farmington Woods ES)

2022-23 Base School	Calendar	Capacity w/ Trailers	2023-24 Util w/ Trl	2025-26 Util w/ Trl
Farmington Woods ES	T	728	83%	80%
Washington ES	T	508	102%	101%

Proposed 2023-24 Base School	Calendar	Capacity w/ Trailers	2023-24 Util w/ Trl	2025-26 Util w/ Trl
Farmington Woods ES	T	728	82%	80%
Washington ES	T	508	102%	102%

- M-T – Multi-Track Year-Round Calendar
- S-T – Single Track Year-Round Calendar
- T – Traditional Calendar
- Base % = Percentage of WCPSS students within base attending the base school
- Util = Utilization based on 2022-23 capacity, updated May 2022
- Util w/ Trl = Utilization with Trailers

Existing Schools – Fuller ES (from Laurel Park ES)

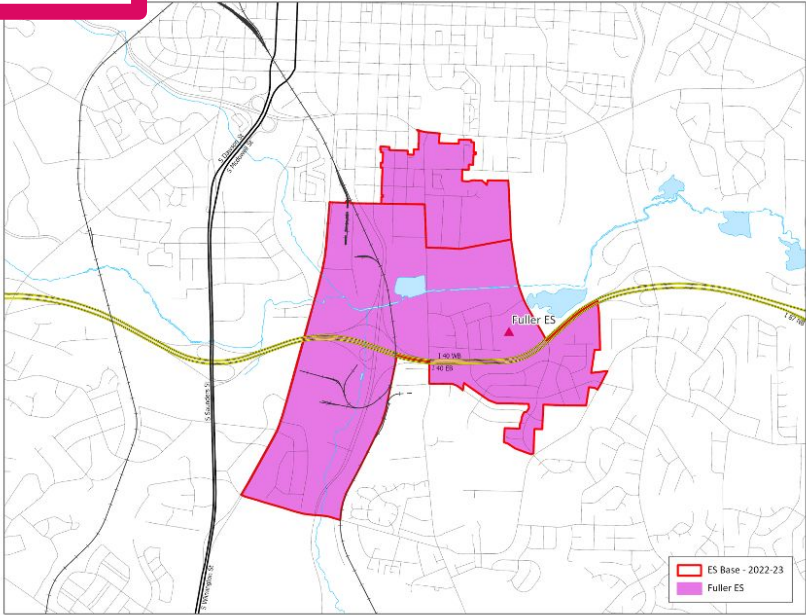
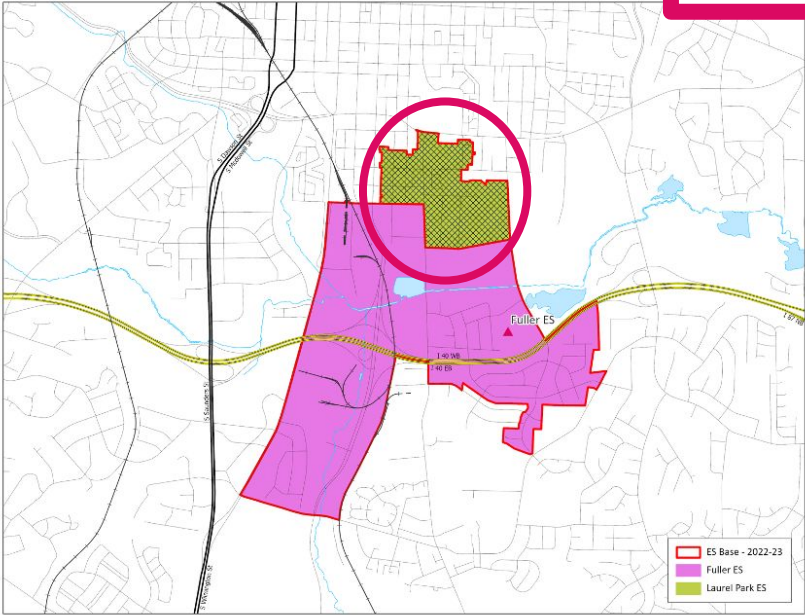


Impacted Areas: 

Proposed Base Areas

Existing Schools – Fuller ES (from Laurel Park ES)

ZOOM



Impacted Areas: 

Proposed Base Areas

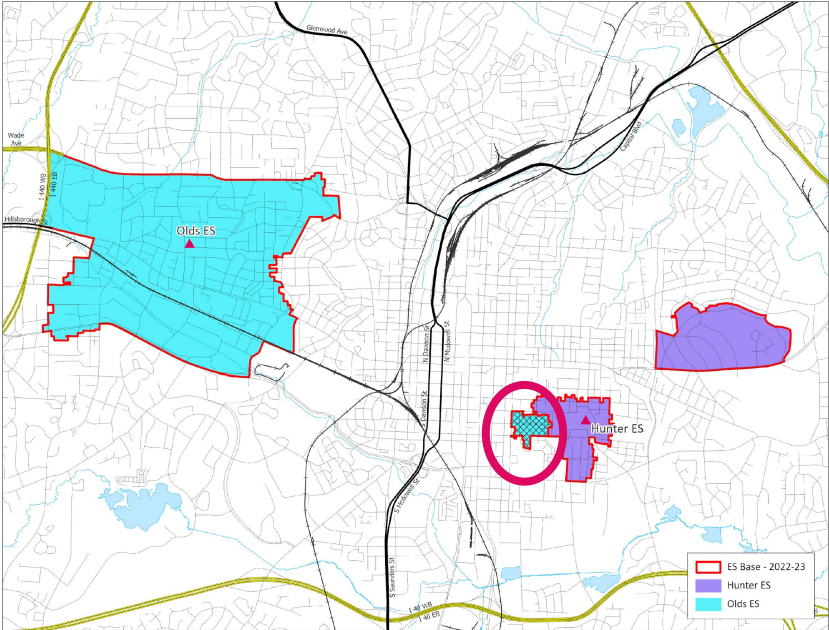
Existing Schools – Fuller ES (from Laurel Park ES)

2022-23 Base School	Calendar	Capacity w/ Trailers	2023-24 Util w/ Trl	2025-26 Util w/ Trl
Fuller ES	T	508	72%	76%
Laurel Park ES	M-T	854	97%	92%

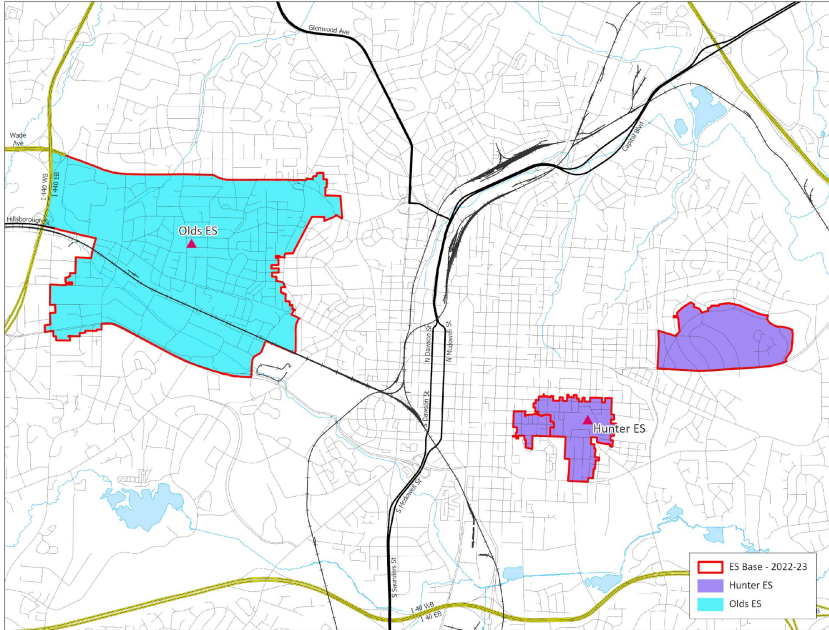
Proposed 2023-24 Base School	Calendar	Capacity w/ Trailers	2023-24 Util w/ Trl	2025-26 Util w/ Trl
Fuller ES	T	508	79%	83%
Laurel Park ES	M-T	854	93%	87%

- M-T – Multi-Track Year-Round Calendar
- S-T – Single Track Year-Round Calendar
- T – Traditional Calendar
- Base % = Percentage of WCPSS students within base attending the base school
- Util = Utilization based on 2022-23 capacity, updated May 2022
- Util w/ Trl = Utilization with Trailers

Existing Schools – Hunter ES (from Olds ES)



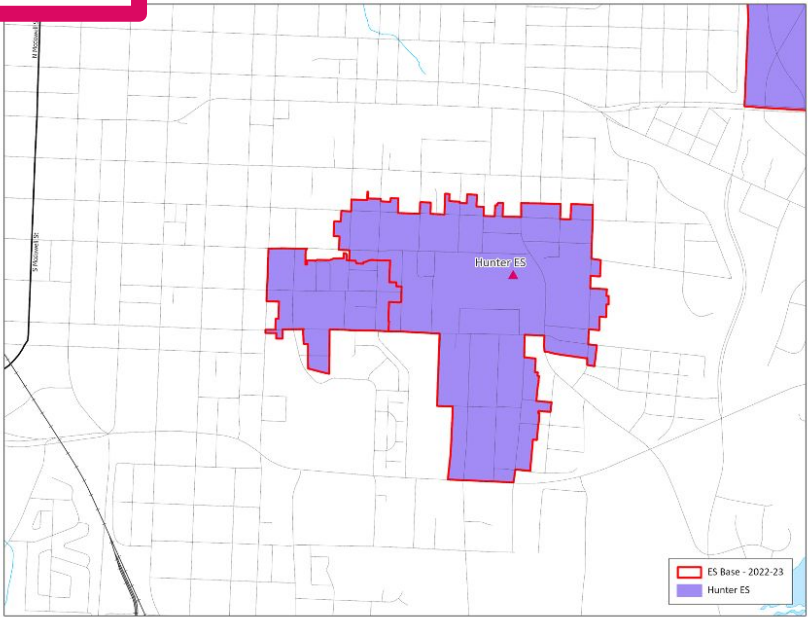
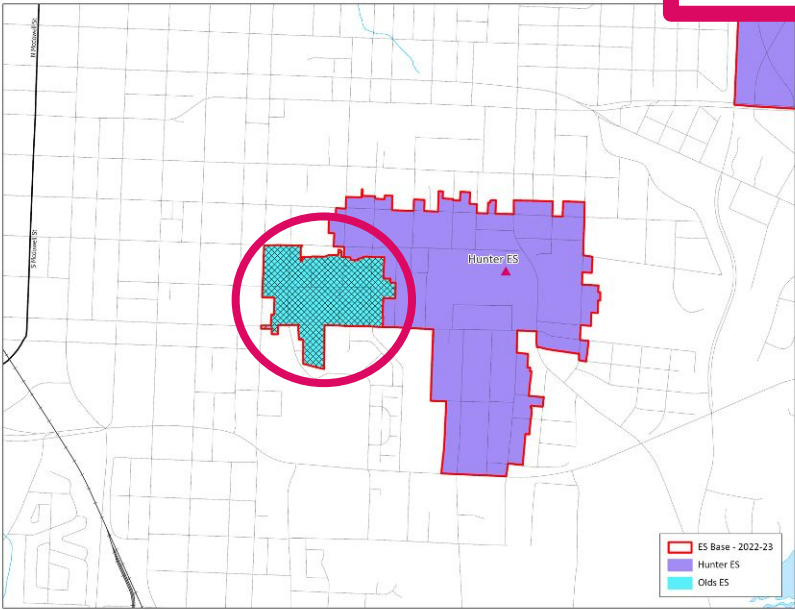
Impacted Areas:



Proposed Base Areas

Existing Schools – Hunter ES (from Olds ES)

ZOOM



Impacted Areas: 

Proposed Base Areas

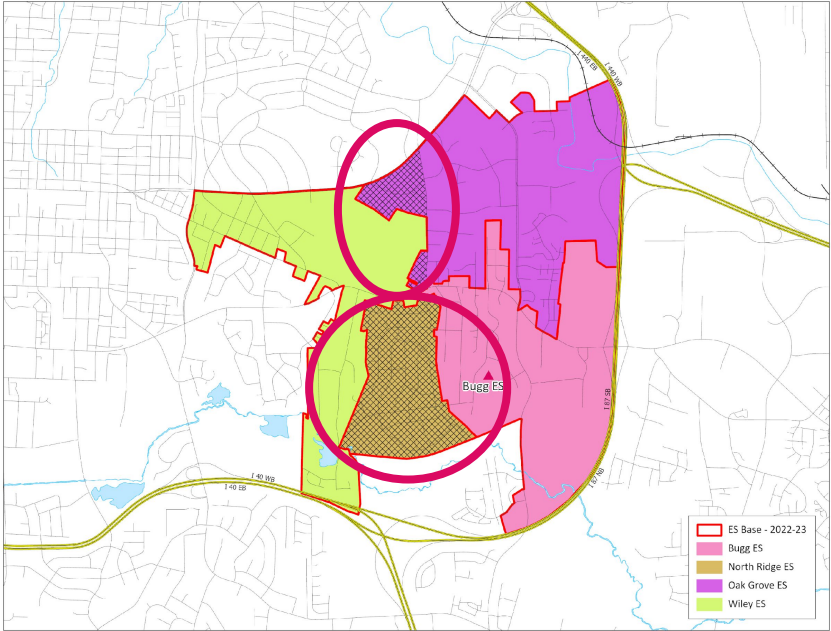
Existing Schools – Hunter ES (from Olds ES)

2022-23 Base School	Calendar	Capacity w/ Trailers	2023-24 Util w/ Trl	2025-26 Util w/ Trl
Hunter ES	T	628	96%	96%
Olds ES	T	220	121%	112%

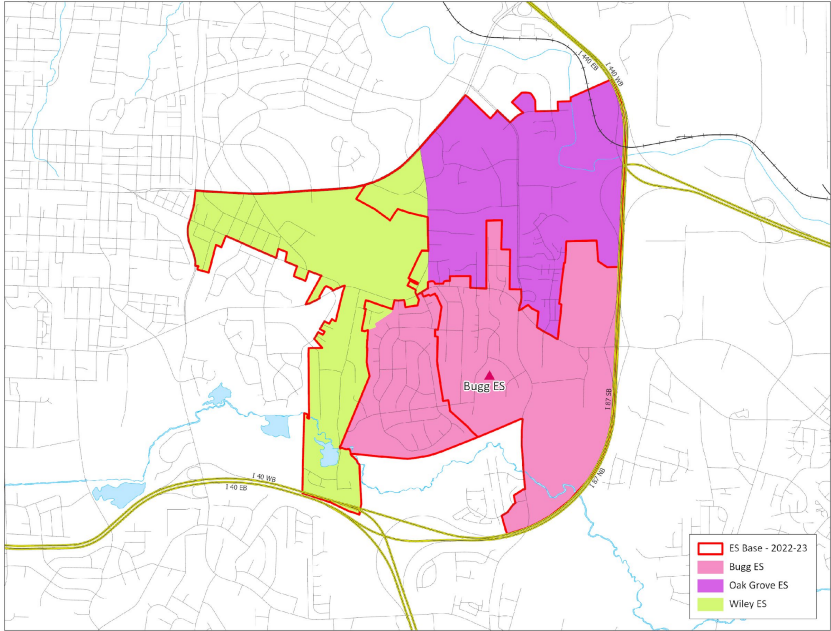
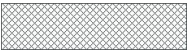
Proposed 2023-24 Base School	Calendar	Capacity w/ Trailers	2023-24 Util w/ Trl	2025-26 Util w/ Trl
Hunter ES	T	628	99%	99%
Olds ES	T	220	113%	106%

- M-T – Multi-Track Year-Round Calendar
- S-T – Single Track Year-Round Calendar
- T – Traditional Calendar
- Base % = Percentage of WCPSS students within base attending the base school
- Util = Utilization based on 2022-23 capacity, updated May 2022
- Util w/ Trl = Utilization with Trailers

Existing Schools – Bugg & Wiley ES (from Oak Grove & North Ridge ES)



Impacted Areas:



Proposed Base Areas

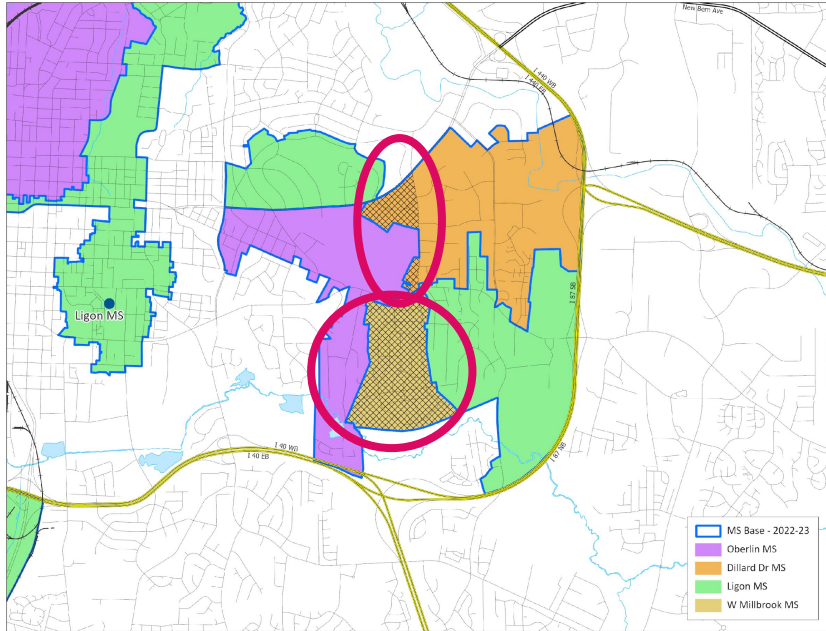
Existing Schools – Bugg & Wiley ES (from Oak Grove & North Ridge ES)

2022-23 Base School	Calendar	Capacity w/ Trailers	2023-24 Util w/ Trl	2025-26 Util w/ Trl
Bugg ES	T	410	52%	52%
North Ridge ES	T	616	112%	107%
Oak Grove ES	M-T	716	87%	83%
Wiley ES	T	410	89%	88%

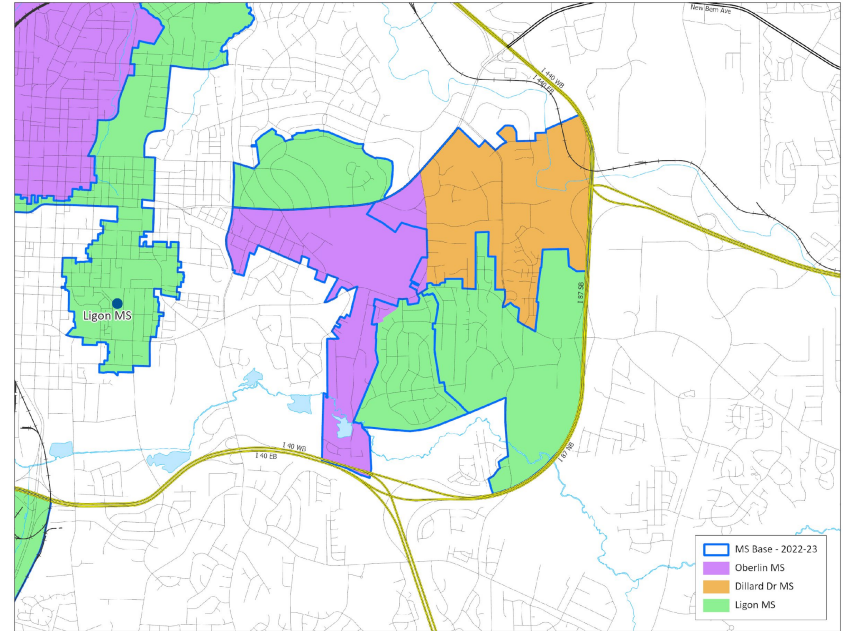
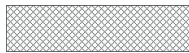
Proposed 2023-24 Base School	Calendar	Capacity w/ Trailers	2023-24 Util w/ Trl	2025-26 Util w/ Trl
Bugg ES	T	410	64%	65%
North Ridge ES	T	616	103%	98%
Oak Grove ES	M-T	716	87%	82%
Wiley ES	T	410	90%	89%

- M-T – Multi-Track Year-Round Calendar
- S-T – Single Track Year-Round Calendar
- T – Traditional Calendar
- Base % = Percentage of WCPSS students within base attending the base school
- Util = Utilization based on 2022-23 capacity, updated May 2022
- Util w/ Trl = Utilization with Trailers

Existing Schools - Ligon & Oberlin MS (from Dillard Drive & West Millbrook MS)



Impacted Areas:



Proposed Base Areas

Existing Schools – Ligon & Oberlin MS (from Dillard Drive & West Millbrook MS)

2022-23 Base School	Calendar	Capacity w/ Trailers	2023-24 Util w/ Trl	2025-26 Util w/ Trl
Oberlin MS	T	1092	103%	99%
Dillard Dr MS	T	1092	93%	94%
Ligon MS	T	1014	95%	96%
W Millbrook MS	T	1248	79%	77%

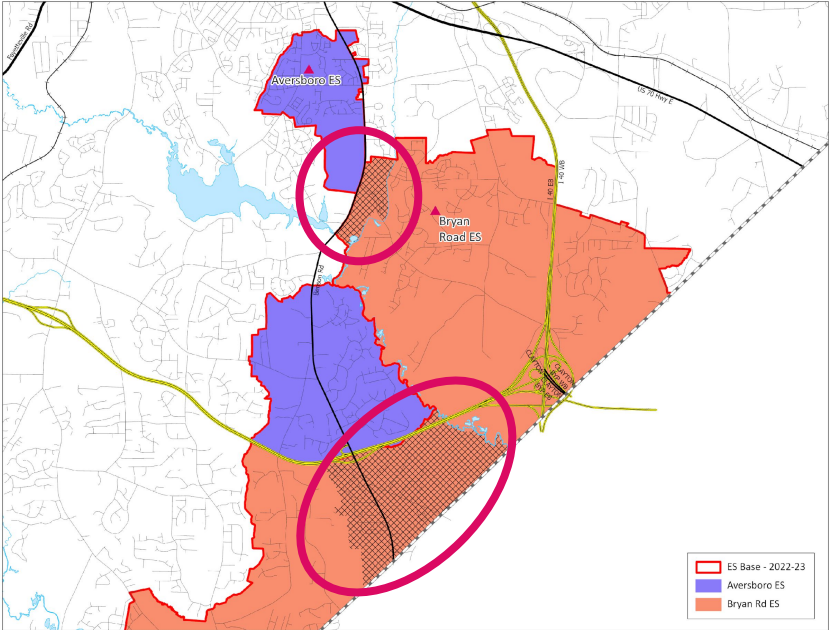
Proposed 2023-24 Base School	Calendar	Capacity w/ Trailers	2023-24 Util w/ Trl	2025-26 Util w/ Trl
Oberlin MS	T	1092	103%	100%
Dillard Dr MS	T	1092	93%	94%
Ligon MS	T	1014	98%	99%
W Millbrook MS	T	1248	76%	74%

- M-T – Multi-Track Year-Round Calendar
- S-T – Single Track Year-Round Calendar
- T – Traditional Calendar
- Base % = Percentage of WCPSS students within base attending the base school
- Util = Utilization based on 2022-23 capacity, updated May 2022
- Util w/ Trl = Utilization with Trailers

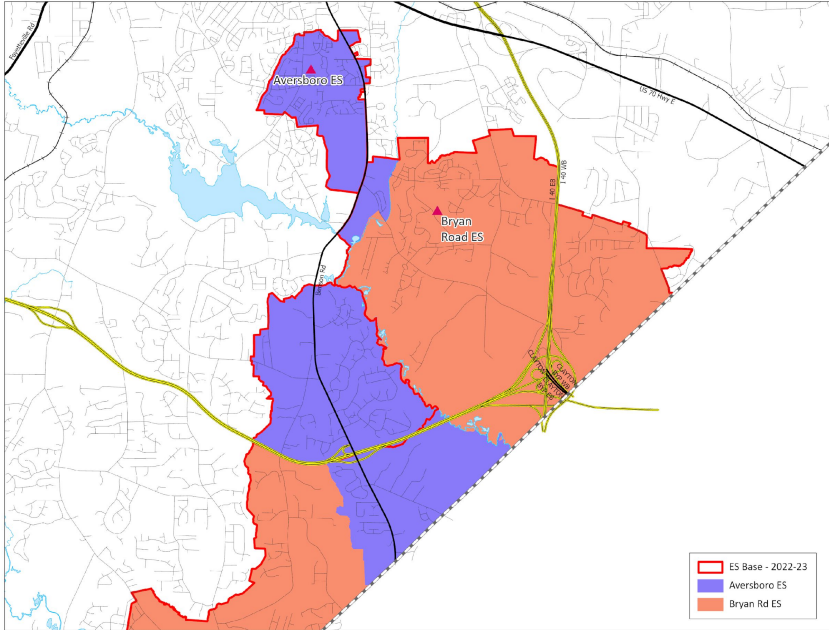


Southeastern Area & Southern Area

Existing Schools – Aversboro ES (from Bryan Road ES)



Impacted Areas:



Proposed Base Areas

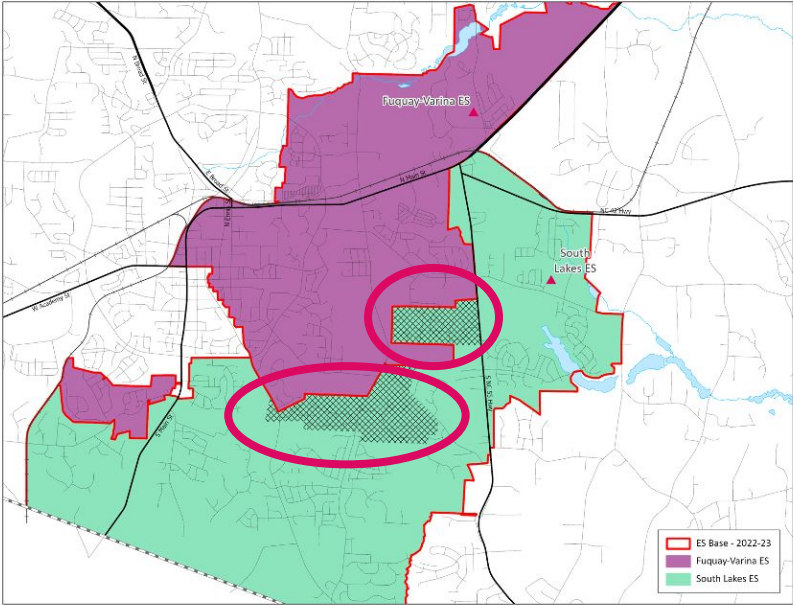
Existing Schools – Aversboro ES (from Bryan Road ES)

2022-23 Base School	Calendar	Capacity w/ Trailers	2023-24 Util w/ Trl	2025-26 Util w/ Trl
Aversboro ES	T	588	61%	61%
Bryan Road ES	T	616	106%	114%

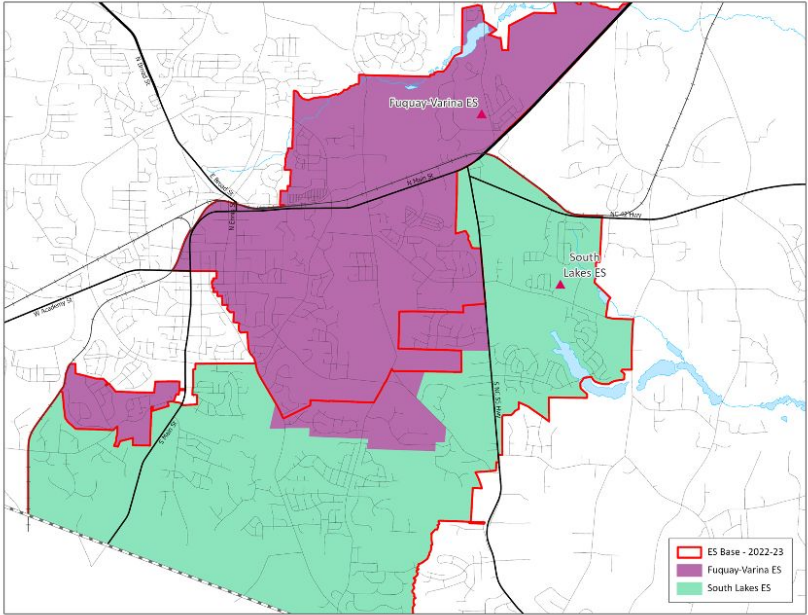
Proposed 2023-24 Base School	Calendar	Capacity w/ Trailers	2023-24 Util w/ Trl	2025-26 Util w/ Trl
Aversboro ES	T	588	68%	68%
Bryan Road ES	T	616	97%	104%

- M-T – Multi-Track Year-Round Calendar
- S-T – Single Track Year-Round Calendar
- T – Traditional Calendar
- Base % = Percentage of WCPSS students within base attending the base school
- Util = Utilization based on 2022-23 capacity, updated May 2022
- Util w/ Trl = Utilization with Trailers

Existing Schools – Fuquay-Varina ES (from South Lakes ES)



Impacted Areas:



Proposed Base Areas

Existing Schools – Fuquay-Varina ES (from South Lakes ES)

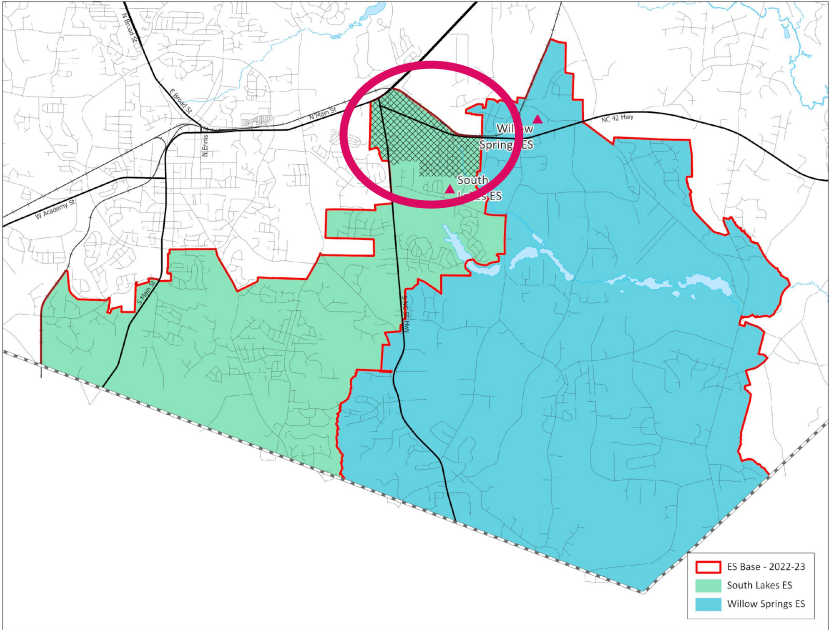
2022-23 Base School	Calendar	Capacity w/ Trailers	2023-24 Util w/ Trl	2025-26 Util w/ Trl
Fuquay-Varina ES	T	768	84%	82%
South Lakes ES	T	716	117%	128%

Proposed 2023-24 Base School	Calendar	Capacity w/ Trailers	2023-24 Util w/ Trl	2025-26 Util w/ Trl
Fuquay-Varina ES	T	768	94%	88%
South Lakes ES	T	716	91%	109%

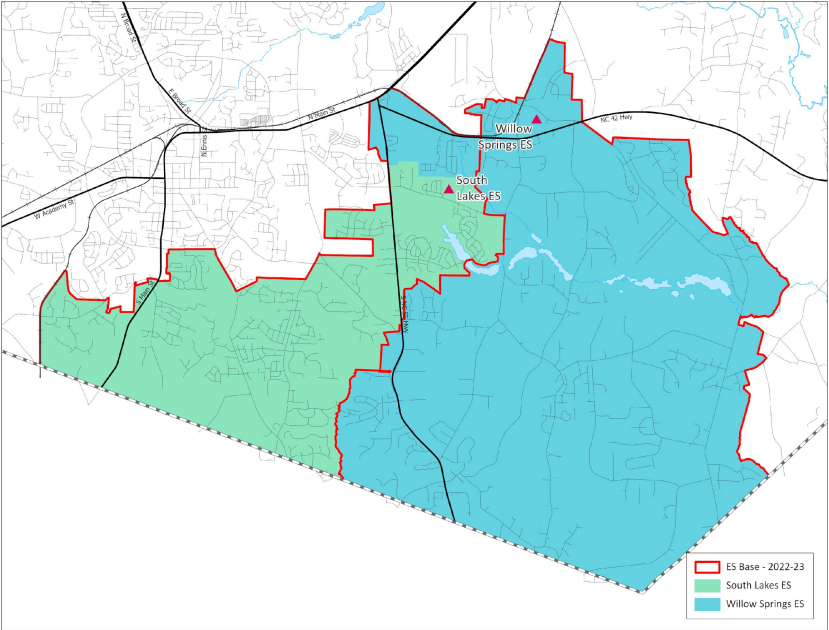
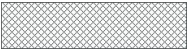
- M-T – Multi-Track Year-Round Calendar
- S-T – Single Track Year-Round Calendar
- T – Traditional Calendar
- Base % = Percentage of WCPSS students within base attending the base school
- Util = Utilization based on 2022-23 capacity, updated May 2022
- Util w/ Trl = Utilization with Trailers

NOTE: South Lakes ES is impacted by other assignment adjustments

Existing Schools – Willow Springs ES (from South Lakes ES)



Impacted Areas:



Proposed Base Areas

Existing Schools – Willow Springs ES (from South Lakes ES)

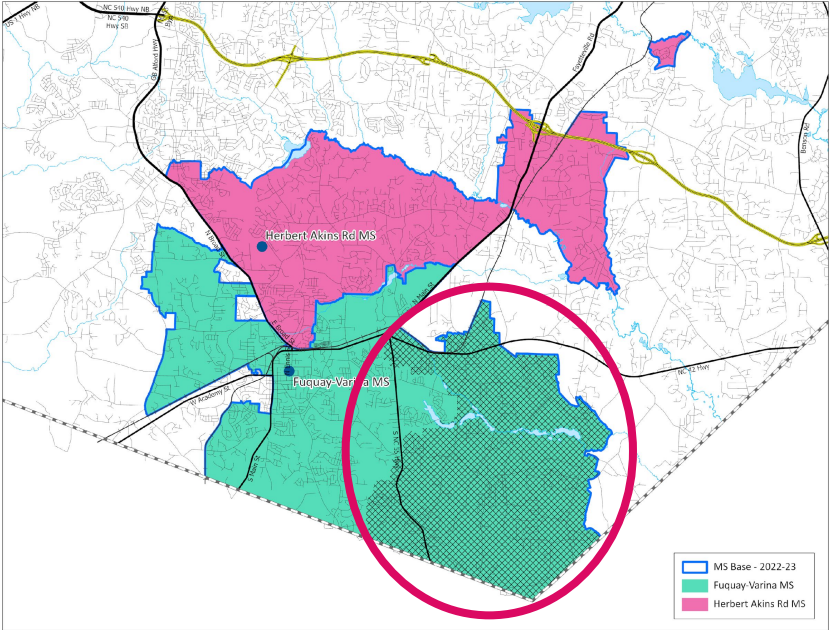
2022-23 Base School	Calendar	Capacity w/ Trailers	2023-24 Util w/ Trl	2025-26 Util w/ Trl
South Lakes ES	T	716	117%	128%
Willow Springs ES	M-T	876	79%	88%

Proposed 2023-24 Base School	Calendar	Capacity w/ Trailers	2023-24 Util w/ Trl	2025-26 Util w/ Trl
South Lakes ES	T	716	91%	109%
Willow Springs ES	M-T	876	88%	97%

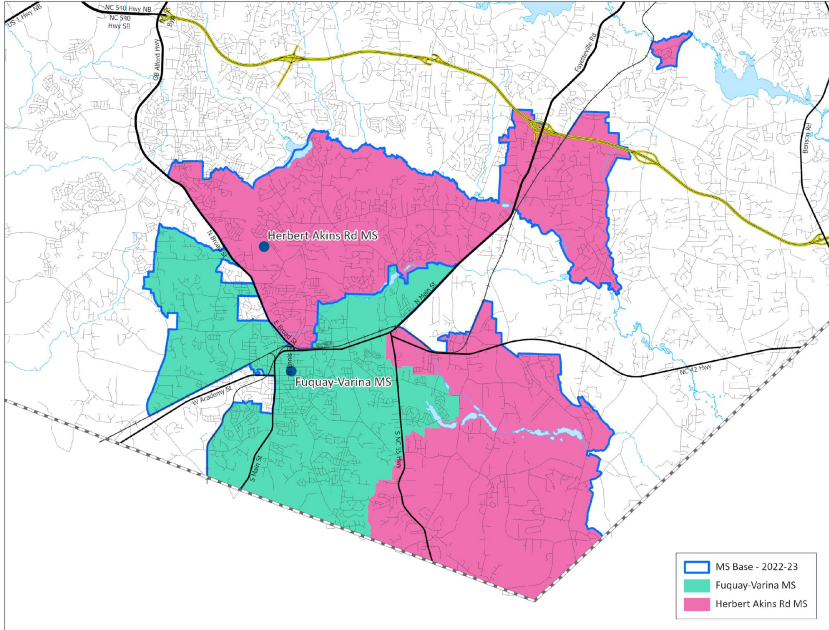
- M-T – Multi-Track Year-Round Calendar
- S-T – Single Track Year-Round Calendar
- T – Traditional Calendar
- Base % = Percentage of WCPSS students within base attending the base school
- Util = Utilization based on 2022-23 capacity, updated May 2022
- Util w/ Trl = Utilization with Trailers

NOTE: South Lakes ES is impacted by other assignment adjustments

Existing Schools – Herbert Akins Road MS (from Fuquay-Varina MS)



Impacted Areas:



Proposed Base Areas

Existing Schools – Herbert Akins Road MS (from Fuquay-Varina MS)

2022-23 Base School	Calendar	Capacity w/ Trailers	2023-24 Util w/ Trl	2025-26 Util w/ Trl
Fuquay-Varina MS	T	936	130%	135%
Herbert Akins Rd MS	M-T	1248	75%	75%

Proposed 2023-24 Base School	Calendar	Capacity w/ Trailers	2023-24 Util w/ Trl	2025-26 Util w/ Trl
Fuquay-Varina MS	T	936	90%	95%
Herbert Akins Rd MS	M-T	1248	100%	100%

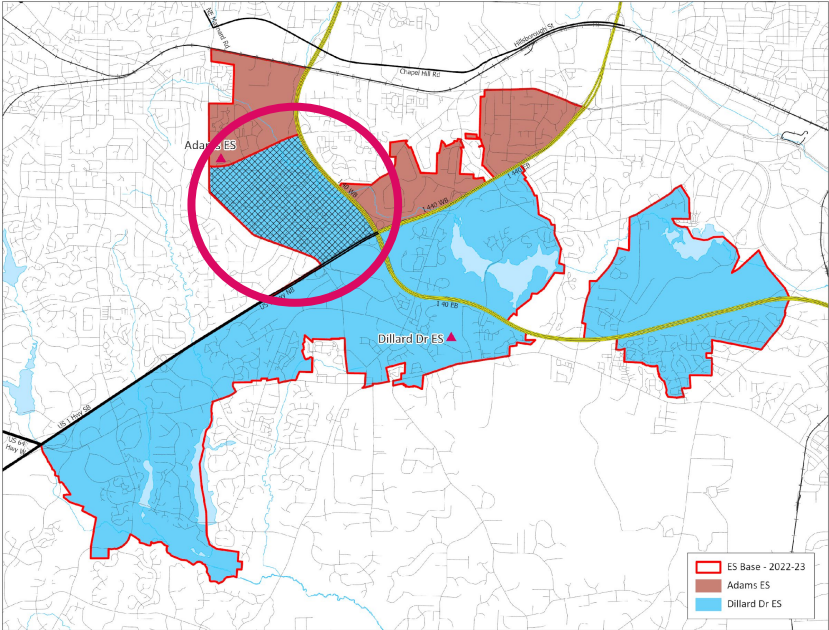
- M-T – Multi-Track Year-Round Calendar
- S-T – Single Track Year-Round Calendar
- T – Traditional Calendar
- Base % = Percentage of WCPSS students within base attending the base school
- Util = Utilization based on 2022-23 capacity, updated May 2022
- Util w/ Trl = Utilization with Trailers

NOTE: Fuquay-Varina MS and Herbert Akins Rd MS are impacted by other assignment adjustments

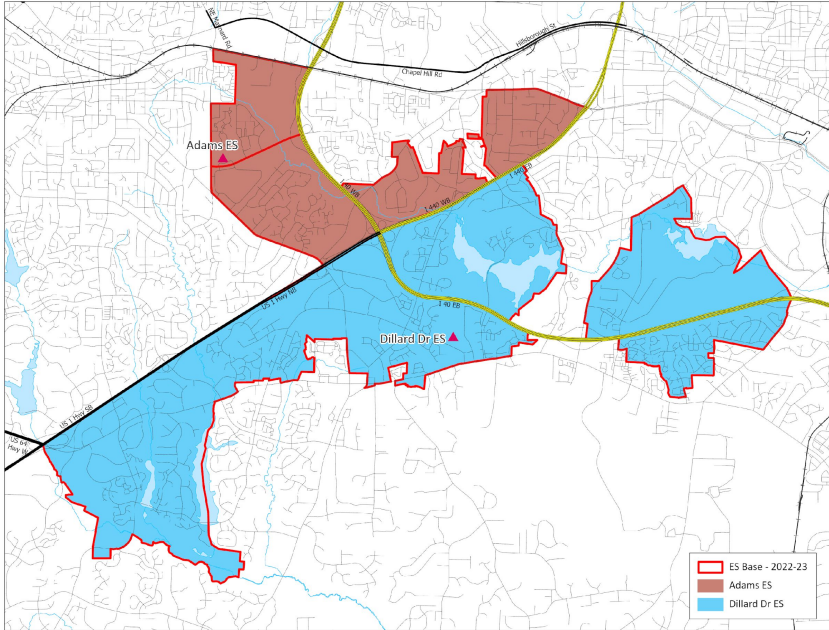


Southwestern Area & Western Area

Existing Schools – Adams ES (from Dillard Drive ES)



Impacted Areas: 



Proposed Base Areas

Existing Schools – Adams ES (from Dillard Drive ES)

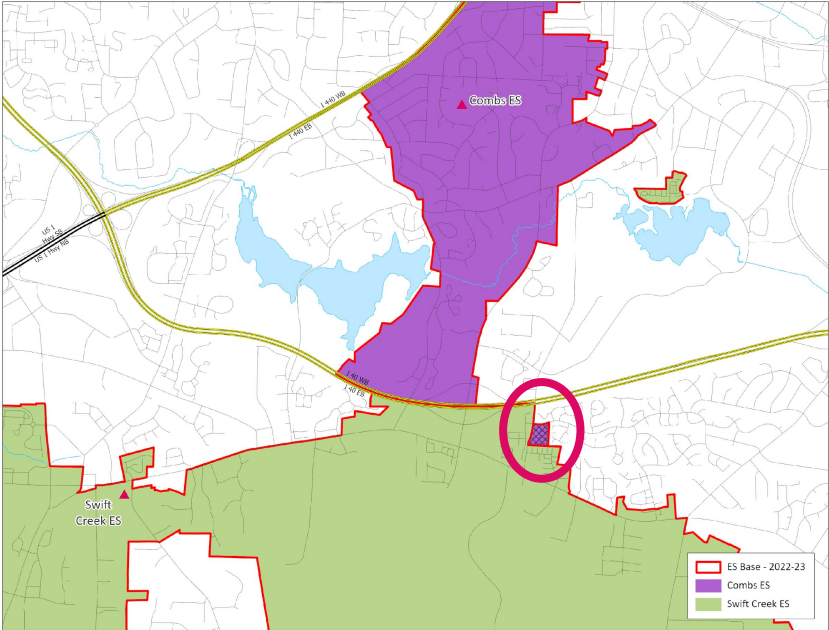
2022-23 Base School	Calendar	Capacity w/ Trailers	2023-24 Util w/ Trl	2025-26 Util w/ Trl
Adams ES	M-T	756	73%	76%
Dillard Dr ES	T	668	105%	100%

Proposed 2023-24 Base School	Calendar	Capacity w/ Trailers	2023-24 Util w/ Trl	2025-26 Util w/ Trl
Adams ES	M-T	756	91%	94%
Dillard Dr ES	T	668	84%	80%

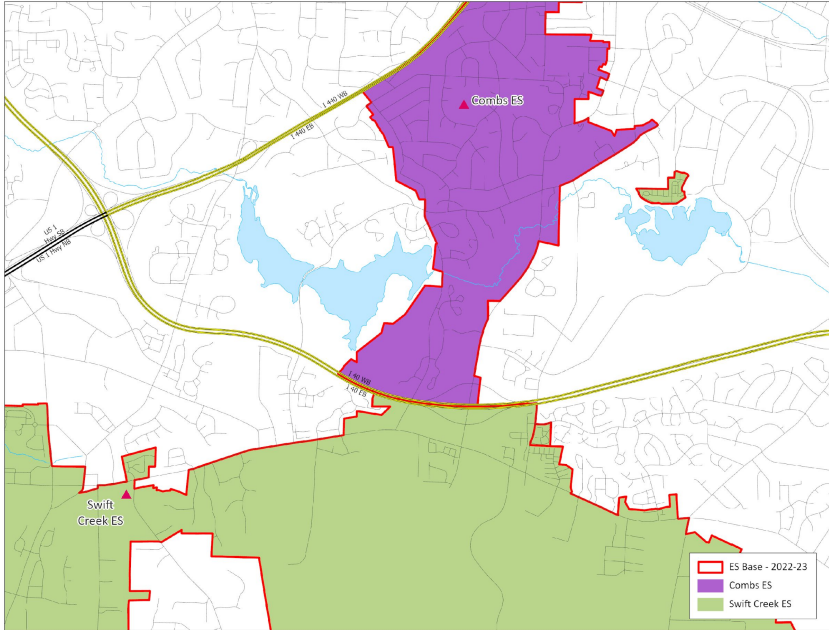
- M-T – Multi-Track Year-Round Calendar
- S-T – Single Track Year-Round Calendar
- T – Traditional Calendar
- Base % = Percentage of WCPSS students within base attending the base school
- Util = Utilization based on 2022-23 capacity, updated May 2022
- Util w/ Trl = Utilization with Trailers

NOTE: Dillard Drive ES is impacted by other assignment adjustments

Existing Schools – Swift Creek ES (from Combs ES)



Impacted Areas:



Proposed Base Areas

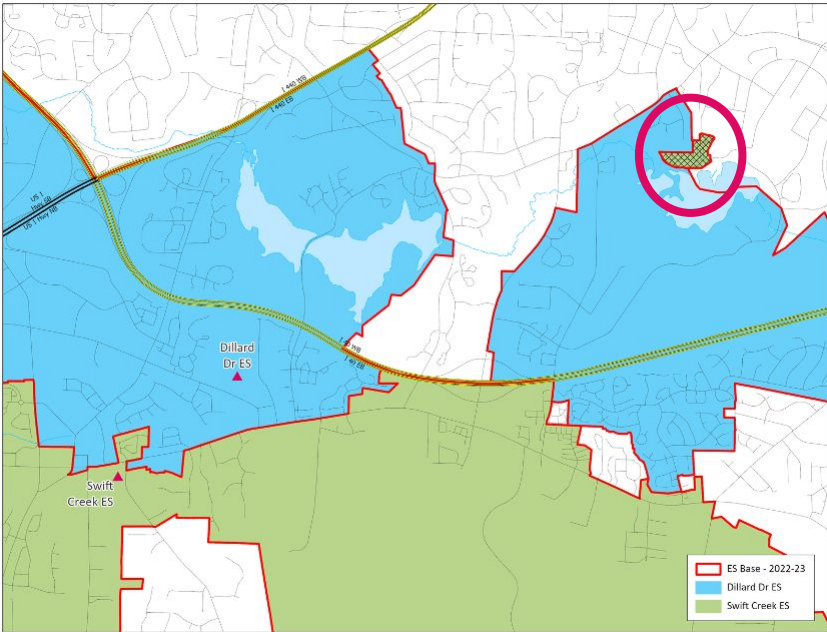
Existing Schools – Swift Creek ES (from Combs ES)

2022-23 Base School	Calendar	Capacity w/ Trailers	2023-24 Util w/ Trl	2025-26 Util w/ Trl
Combs ES	T	630	95%	92%
Swift Creek ES	T	450	88%	89%

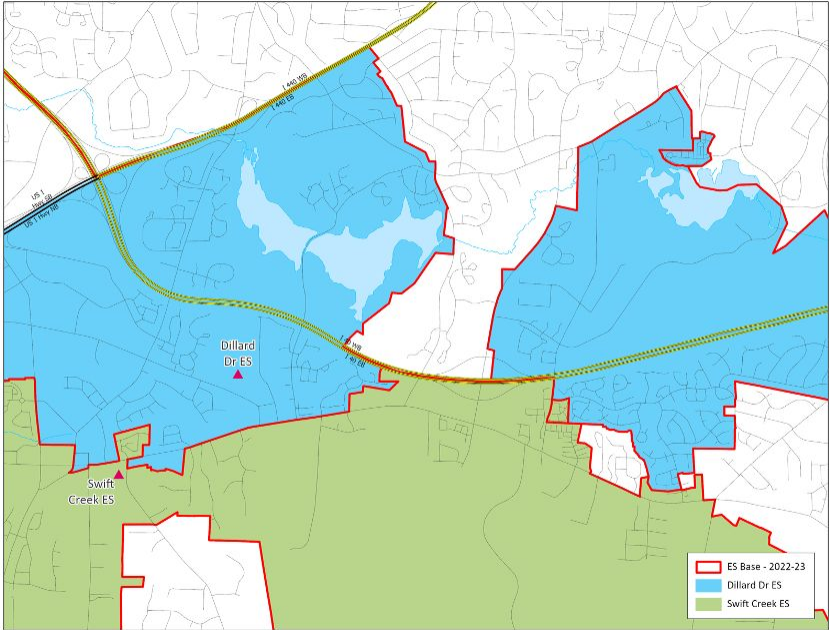
Proposed 2023-24 Base School	Calendar	Capacity w/ Trailers	2023-24 Util w/ Trl	2025-26 Util w/ Trl
Combs ES	T	630	95%	92%
Swift Creek ES	T	450	88%	88%

- M-T – Multi-Track Year-Round Calendar
- S-T – Single Track Year-Round Calendar
- T – Traditional Calendar
- Base % = Percentage of WCPSS students within base attending the base school
- Util = Utilization based on 2022-23 capacity, updated May 2022
- Util w/ Trl = Utilization with Trailers

Existing Schools – Dillard Drive ES (from Swift Creek ES)



Impacted Areas:



Proposed Base Areas

Existing Schools – Dillard Drive ES (from Swift Creek ES)

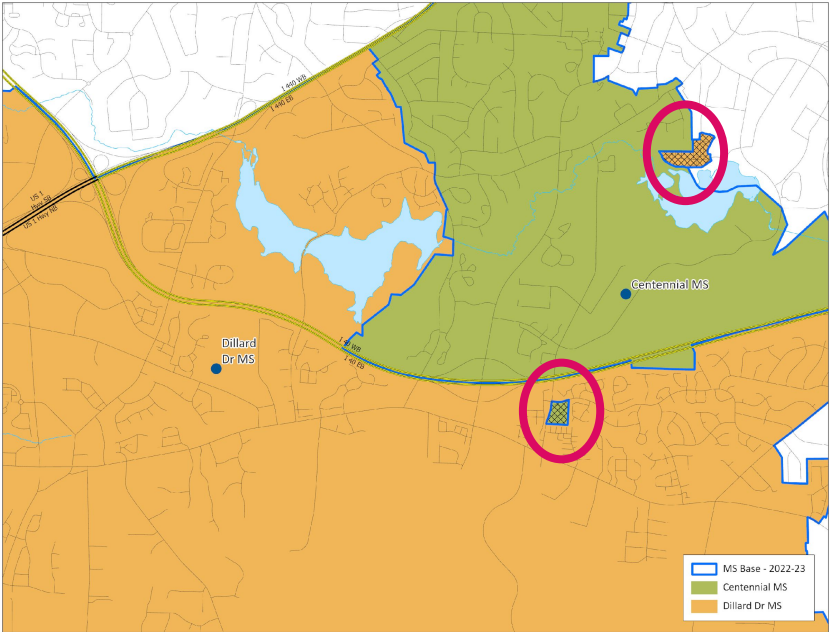
2022-23 Base School	Calendar	Capacity w/ Trailers	2023-24 Util w/ Trl	2025-26 Util w/ Trl
Dillard Dr ES	T	668	105%	100%
Swift Creek ES	T	450	88%	89%

Proposed 2023-24 Base School	Calendar	Capacity w/ Trailers	2023-24 Util w/ Trl	2025-26 Util w/ Trl
Dillard Dr ES	T	668	84%	80%
Swift Creek ES	T	450	88%	88%

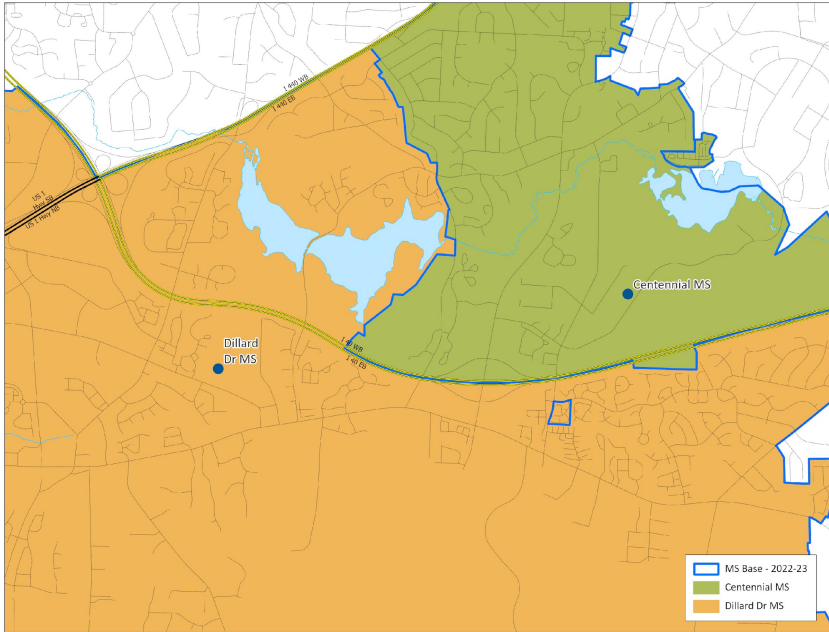
- M-T – Multi-Track Year-Round Calendar
- S-T – Single Track Year-Round Calendar
- T – Traditional Calendar
- Base % = Percentage of WCPSS students within base attending the base school
- Util = Utilization based on 2022-23 capacity, updated May 2022
- Util w/ Trl = Utilization with Trailers

NOTE: Dillard Drive ES is impacted by other assignment adjustments

Existing Schools – Dillard Drive MS and Centennial MS



Impacted Areas:



Proposed Base Areas

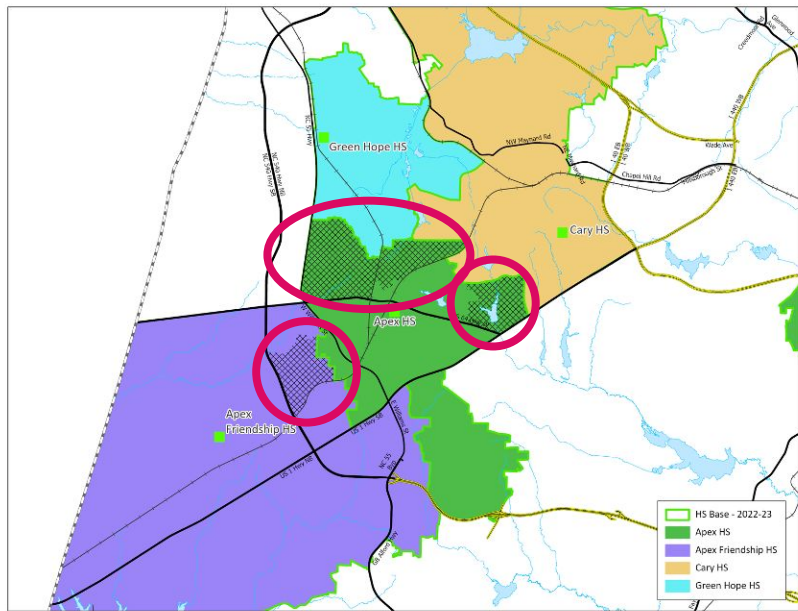
Existing Schools – Dillard Drive MS and Centennial MS

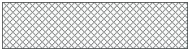
2022-23 Base School	Calendar	Capacity w/ Trailers	2023-24 Util w/ Trl	2025-26 Util w/ Trl
Centennial MS	M	624	92%	91%
Dillard Dr MS	T	1092	93%	94%

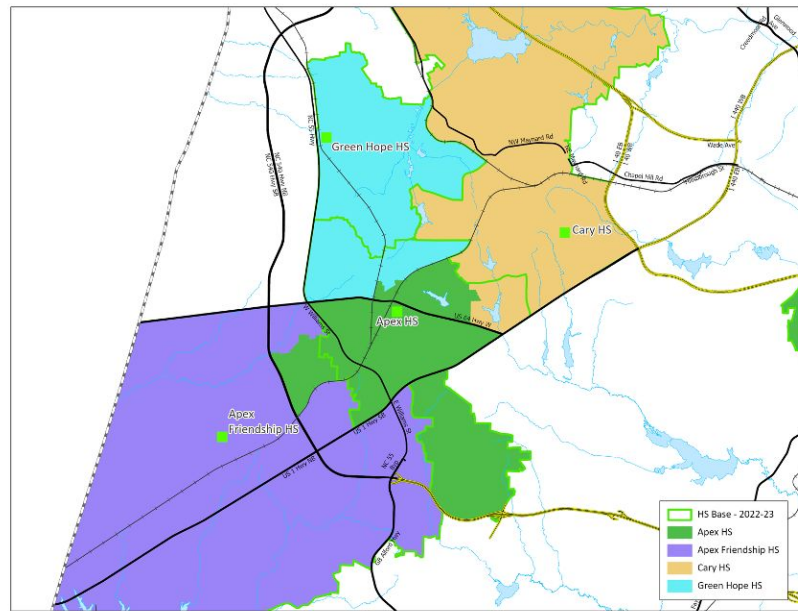
Proposed 2023-24 Base School	Calendar	Capacity w/ Trailers	2023-24 Util w/ Trl	2025-26 Util w/ Trl
Centennial MS	M	624	92%	92%
Dillard Dr MS	T	1092	93%	94%

- M-T – Multi-Track Year-Round Calendar
- S-T – Single Track Year-Round Calendar
- T – Traditional Calendar
- Base % = Percentage of WCPSS students within base attending the base school
- Util = Utilization based on 2022-23 capacity, updated May 2022
- Util w/ Trl = Utilization with Trailers

Existing Schools - Apex, Cary & Green Hope HS (from Apex & Apex Friendship HS)



Impacted Areas: 



Proposed Base Areas

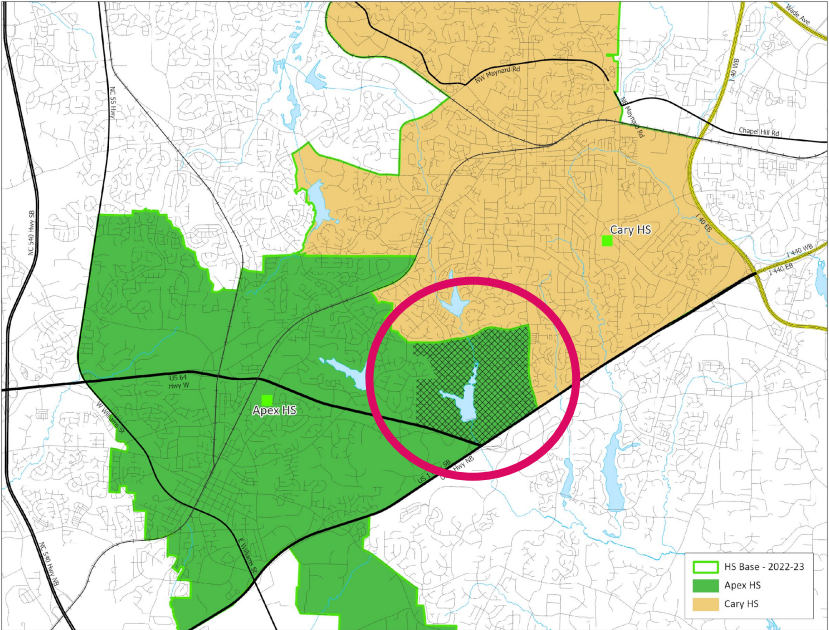
Existing Schools - Apex, Cary & Green Hope HS (from Apex & Apex Friendship HS)

2022-23 Base School	Calendar	Capacity w/ Trailers	2023-24 Util w/ Trl	2025-26 Util w/ Trl
Apex HS	T	2240	113%	106%
Apex Friendship HS	T	2384	119%	122%
Cary HS	T	2234	98%	92%
Green Hope HS	T	2495	82%	78%

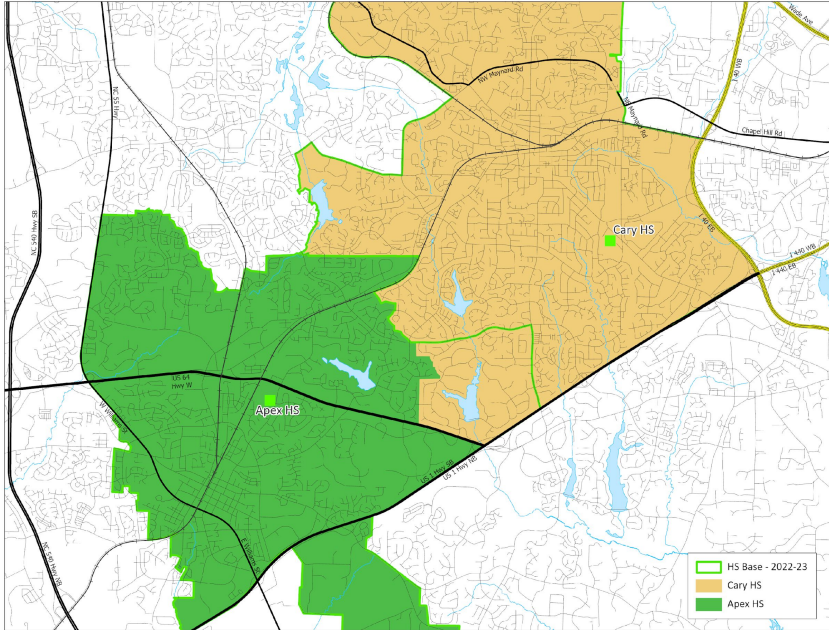
Proposed 2023-24 Base School	Calendar	Capacity w/ Trailers	2023-24 Util w/ Trl	2025-26 Util w/ Trl
Apex HS	T	2240	107%	99%
Apex Friendship HS	T	2384	103%	107%
Cary HS	T	2234	101%	95%
Green Hope HS	T	2495	100%	96%

- M-T – Multi-Track Year-Round Calendar
- S-T – Single Track Year-Round Calendar
- T – Traditional Calendar
- Base % = Percentage of WCPSS students within base attending the base school
- Util = Utilization based on 2022-23 capacity, updated May 2022
- Util w/ Trl = Utilization with Trailers

Existing Schools – Cary HS (from Apex HS)

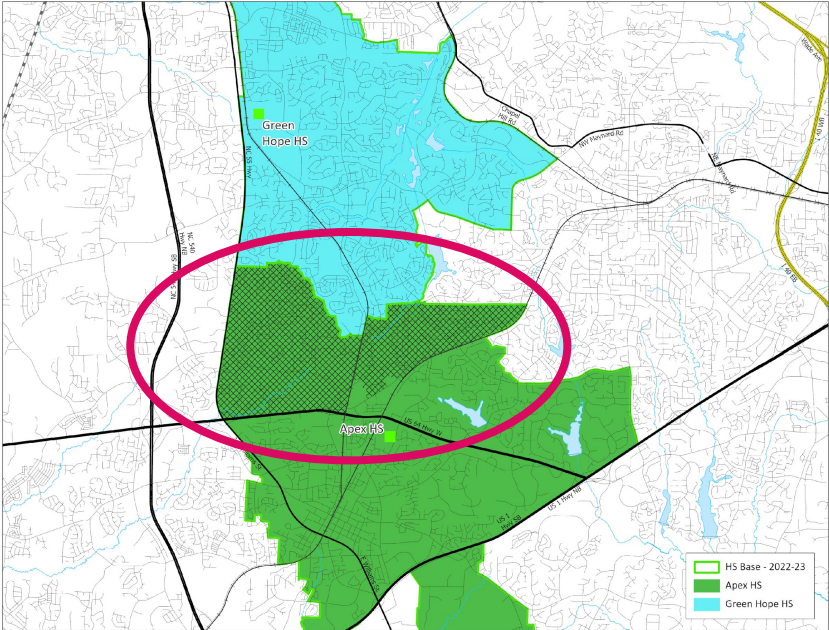


Impacted Areas:

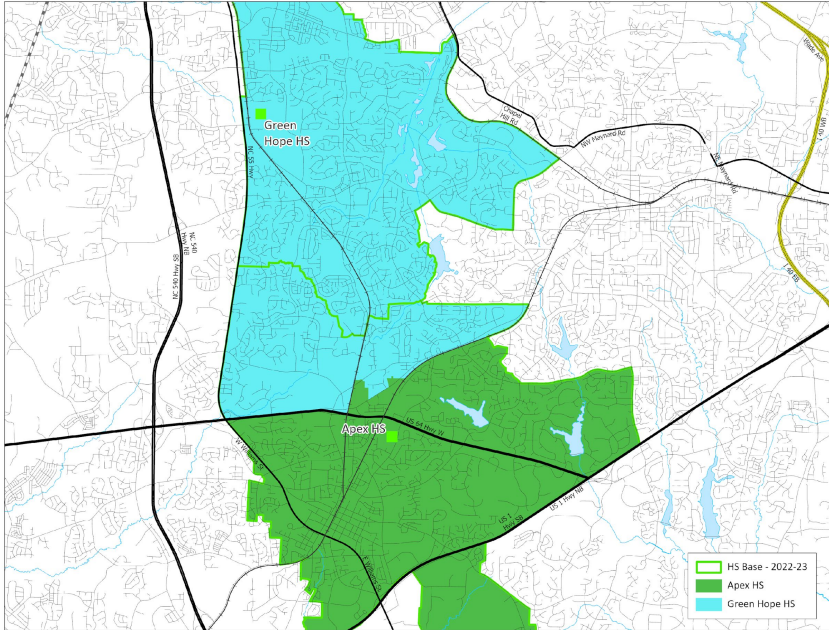


Proposed Base Areas

Existing Schools – Green Hope HS (from Apex HS)

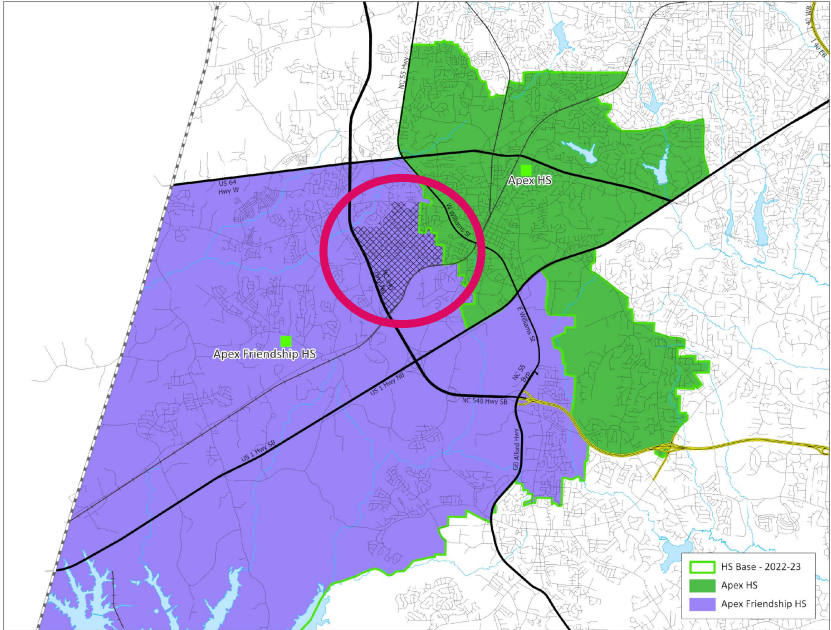


Impacted Areas:

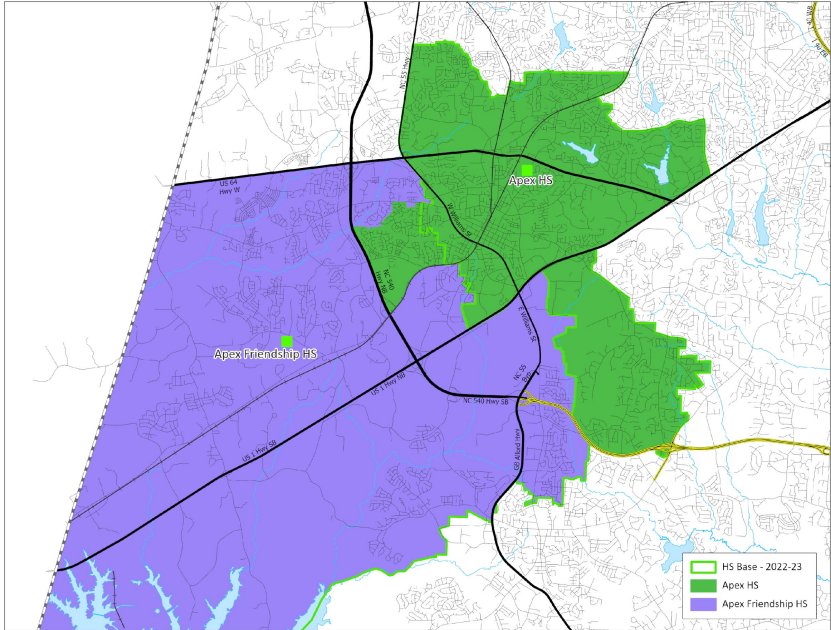


Proposed Base Areas

Existing Schools – Apex HS (from Apex Friendship HS)



Impacted Areas:



Proposed Base Areas



Calendar Application Changes

Elementary Calendar Application Changes

Current Base	Current Calendar Application School(s)	Proposed Calendar Application School
Aversboro	Banks Road, Timber Drive	n/a
Bailewick	Pleasant Union, Sycamore Creek	n/a
Ballentine	Fuquay-Varina, Lincoln Heights	Fuquay-Varina
Banks Road	Fuquay-Varina, Lincoln Heights	Fuquay-Varina
Baucom	Laurel Park, Salem	Laurel Park
Bryan Road	Banks Road, Rand Road, Timber Drive	Rand Road or Timber Drive
Carpenter	Green Hope, Weatherstone, White Oak	Green Hope or Weatherstone
Douglas	Durant Road, Wilburn	n/a
Farmington Woods	Adams, Timber Drive	Adams, n/a*
Green	Durant Road	n/a
Harris Creek	Wildwood Forest, Rolesville	Rolesville
Hilburn Drive	Brier Creek, Sycamore Creek	Brier Creek

* area near Washington ES

Elementary Calendar Application Changes *(continued)*

Current Base	Current Calendar Application School(s)	Proposed Calendar Application School
Hilburn Drive	Brier Creek, Sycamore Creek	Brier Creek
Hunter	Wilburn	n/a
Jeffreys Grove	Brier Creek, Sycamore Creek	n/a
Lead Mine	Pleasant Union	n/a
Leesville Road	Brier Creek, Sycamore Creek, Wilburn	n/a
Lynn Road	Brier Creek, Pleasant Union	n/a
Middle Creek	Swift Creek, Yates Mill	Swift Creek
Morrisville	Green Hope, Weatherstone	n/a
North Ridge	Barwell Road, Durant Road	n/a
Partnership	Knightdale	n/a
Pleasant Union	Jeffreys Grove, Lynn Road	Lynn Road
Richland Creek	Jones Dairy, Sanford Creek	Jones Dairy
Salem	Baucom, Pleasant Grove, Scotts Ridge	Baucom or Pleasant Grove

Elementary Calendar Application Changes *(continued)*

Current Base	Current Calendar Application School(s)	Proposed Calendar Application School
Southeast Raleigh	Timber Drive	n/a
Stough	Brier Creek	n/a
Turner Creek	Baucom, White Oak	Baucom
Underwood	Wilburn	n/a
Wake Forest	Heritage, Jones Dairy	n/a
Washington	Timber Drive, Wilburn	n/a
Weatherstone	Morrisville, Salem	Morrisville
Wendell	Carver, Lake Myra	Carver
West Lake	Swift Creek, Yates Mill	n/a
Wiley	Adams, Barwell Road, Wilburn	n/a
Willow Springs	Fuquay-Varina, Lincoln Heights	Fuquay-Varina

Middle & High School Calendar Application Changes

Current Middle School Base	Current Calendar Application School(s)	Proposed Calendar Application School
Martin	Lufkin Road, Pine Hollow	n/a
Moore Square	Carroll	n/a
Neuse River	Wendell	n/a
Oberlin	Pine Hollow	n/a
Reedy Creek	Lufkin Road, Salem	n/a
Wendell	Neuse River	n/a
Zebulon	Neuse River	n/a
Current High School Base	Current Calendar Application School	Proposed Calendar Application School
Southeast Raleigh	Middle Creek	n/a



Stability Rules for 2023-24

Stability Rules: Recommendation

- All existing students impacted by assignment changes are eligible to remain assigned to their current school with transfer status (no transportation) through the terminal grade of the school.
 - Rising Kindergarten/6th/9th siblings of existing students eligible to join their sibling with transfer status (no transportation) through the terminal grade of the school.

Details regarding the process for requesting a stability transfer will be provided in Draft 2 of the enrollment plan.



Timeline / Next Steps

Timeline: 2023-2024 Enrollment Plan

- *May 3 – Initial Planning Discussion [BoE Work Session]*
 - *May-June – Staff Hosts ThoughtExchange and Focus Groups*
 - *Community Stakeholders & District Leadership*
 - *May-September – Staff Develops Draft 1*
- **September 20 – Presentation of Draft 1 [BoE Work Session]**
 - **September-October – Staff Hosts Public Engagement Activities**
 - **October – Staff Refines Original Draft**
- **October 18 – Presentation of Draft 2 [BoE Work Session]**
- **November 10 – Public Hearing for BoE**
- **November 15 – Presentation of Final Draft for Review & Approval [BoE Work Session & Meeting]**

Next Steps: Public Engagement Progress

Draft #1 Public Engagement Activities

- September 20:
 - District website is updated with Draft 1 information (wcpss.net/2023enrollmentproposal)
- September 20 - October 7:
 - Open New ThoughtExchange: “What are your thoughts or questions about the proposed changes?” (wcpss.net/draft1feedback)
- September 28 - October 6:
 - Host Regionally Focused Virtual Public Information Sessions
 - September 28, 6:00-7:30 pm - Central Area & Northern Area
 - September 29, 6:00-7:30 pm - Southeast Raleigh, Eastern Area & Northeastern Area
 - October 5, 6:00-7:30 pm - Southeastern Area & Southern Area
 - October 6, 6:00-7:30 pm - Southwestern Area & Western Area



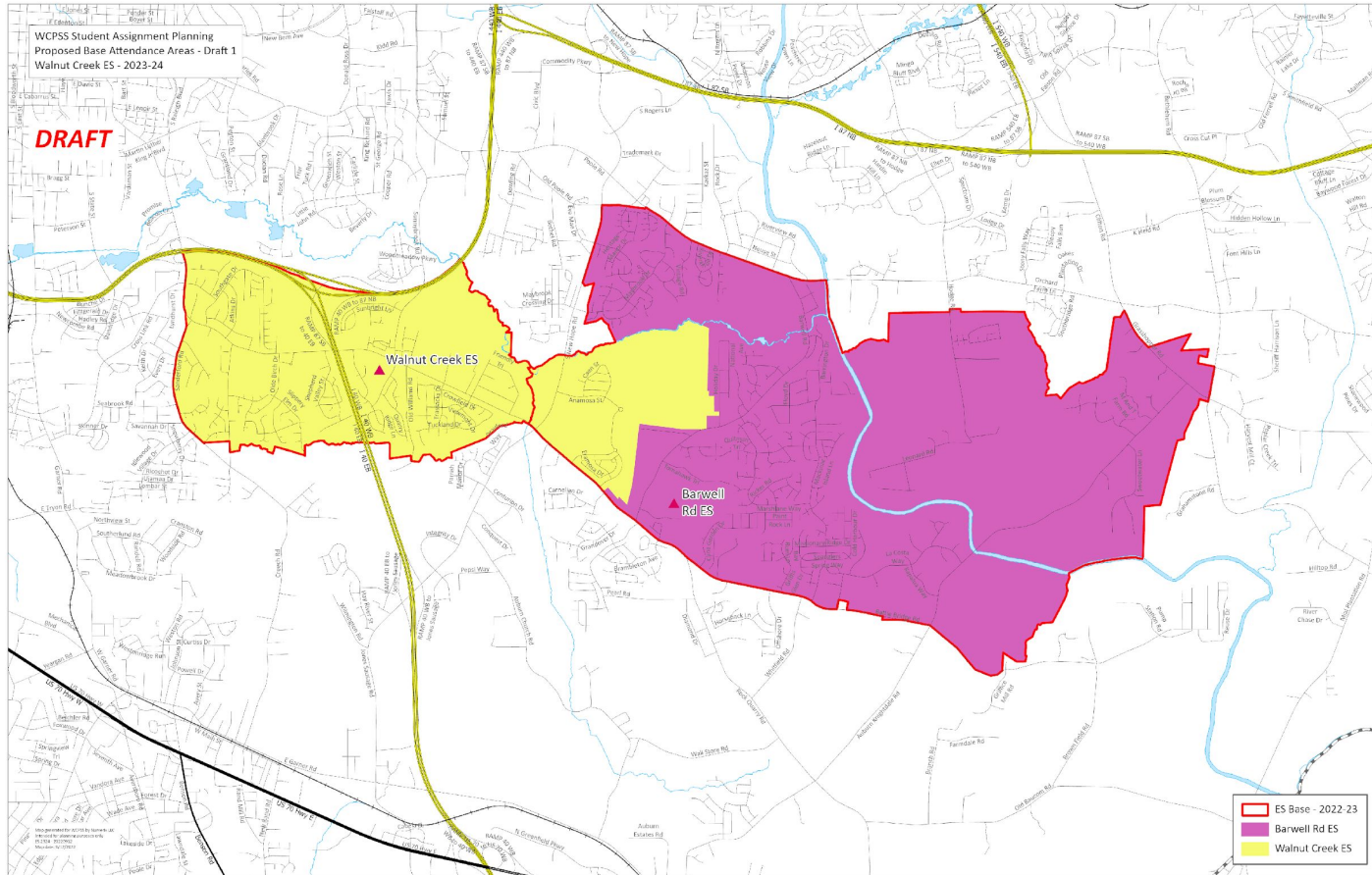
Addendum

Board Policy 4150, Detail Maps, Data Reports

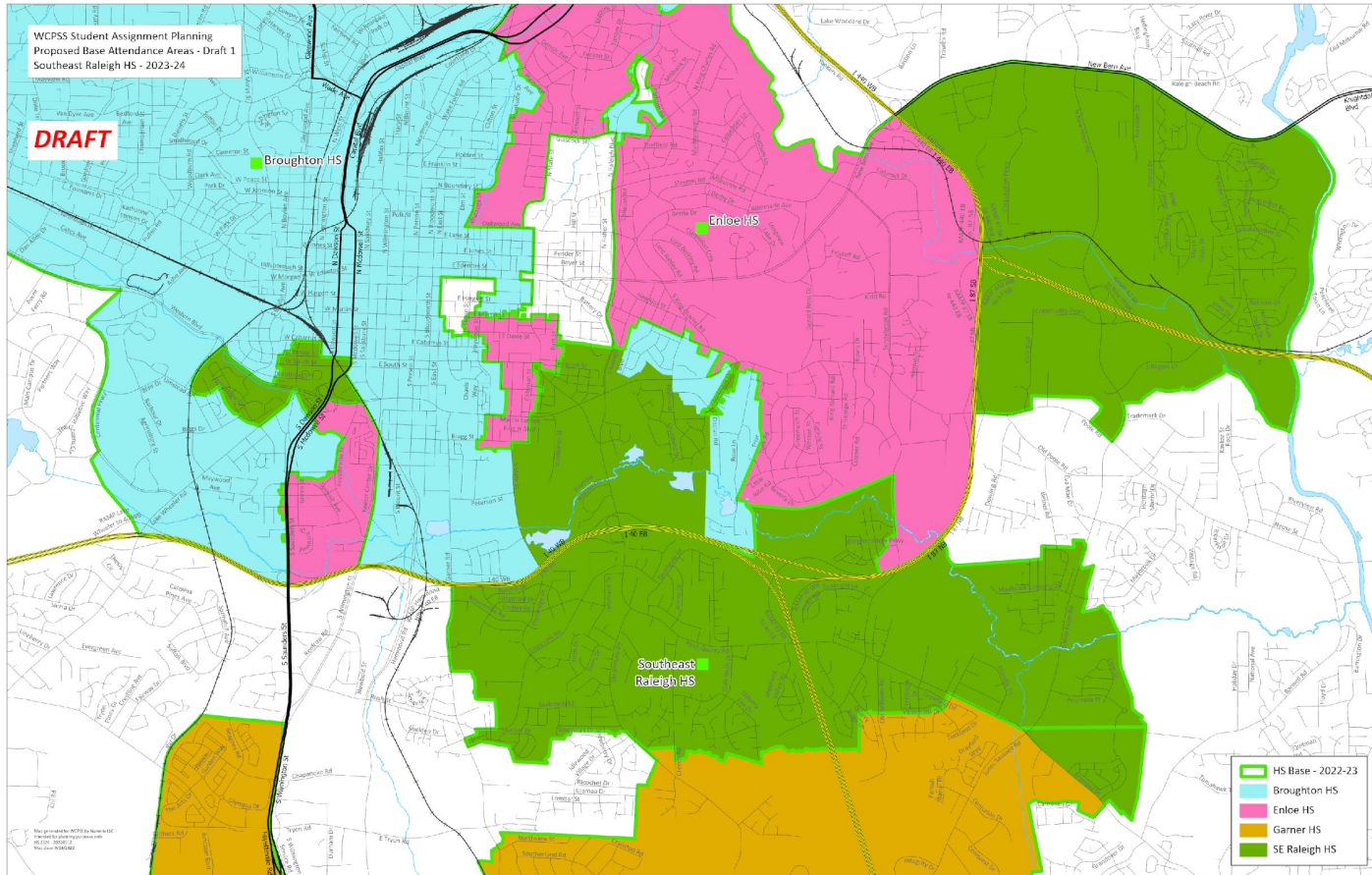
Board Policy 4150: Drawing of School Attendance Areas

Student Achievement	Stability	Proximity	Operational Efficiency
<i>To the extent practicable...</i>			
<p>student populations at each school will provide an optimal opportunity for academic success for all students</p>	<p>a student rising into a terminal grade (5th, 8th, 12th) who is reassigned will be provided an opportunity to stay at the current school for at least one additional year, siblings will also be provided an opportunity to attend for at least the one year period</p>	<p>base school assignments will be within a reasonable distance of the student's home</p>	<p>assignments will optimize the use of school facilities and transportation resources</p>
<i>Factors for consideration include:</i>			
<ul style="list-style-type: none"> • opportunity to apply to designate application schools • minimize high-concentrations of low-performing students • minimize high concentrations of students from low income families 	<ul style="list-style-type: none"> • additional opportunities to remain at the current school, including for siblings, may be included in the annual student enrollment plan • Early College and Magnet application assignments are valid through the terminal grade of the school 	<ul style="list-style-type: none"> • allow students living within the immediate vicinity of a school, defined by the assignment plan, to attend that school • minimize splitting of neighborhoods when developing base attendance areas 	<ul style="list-style-type: none"> • minimize under-enrolled schools • minimize over-crowded schools • maximize transportation efficiencies

DRAFT

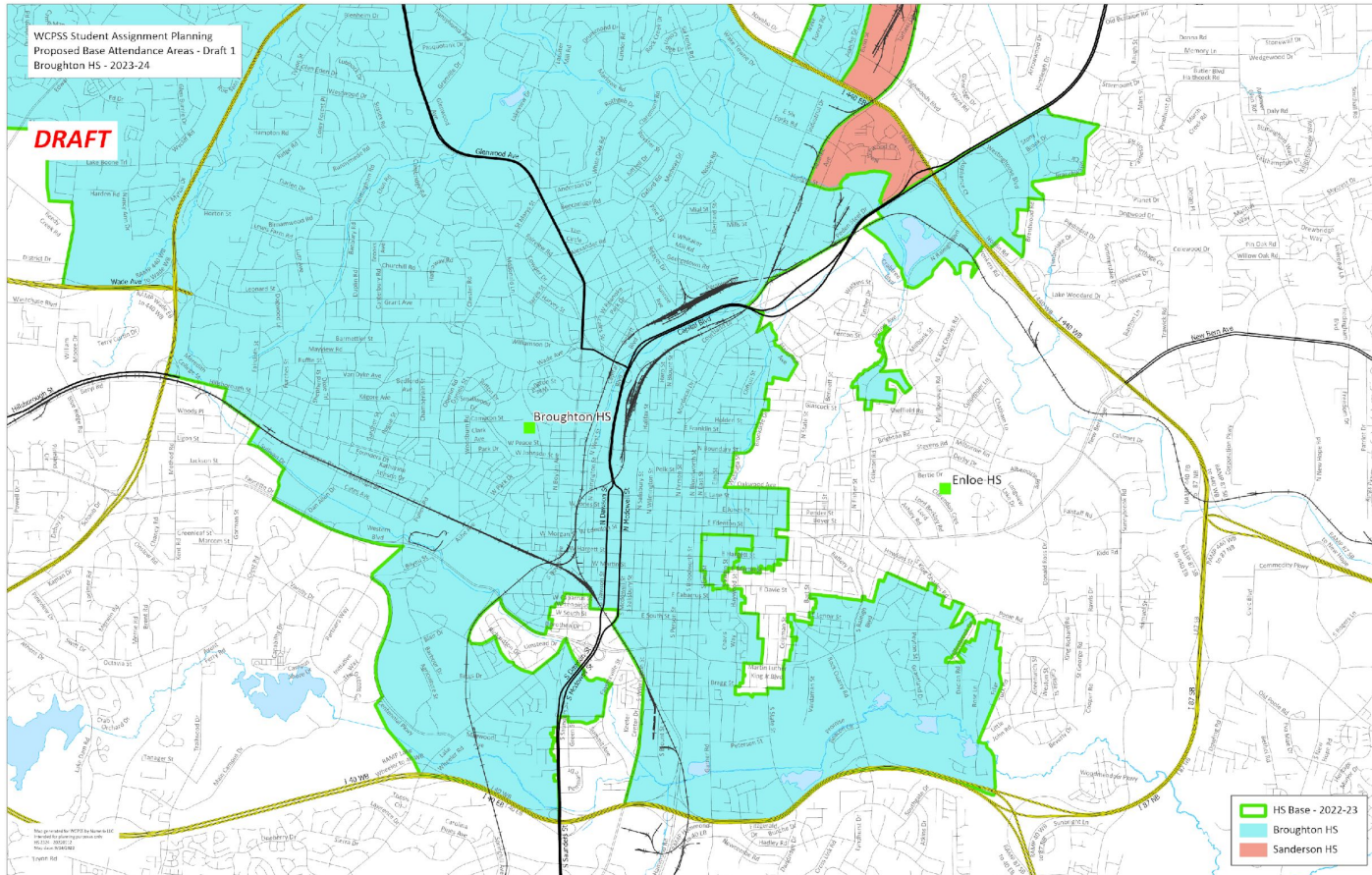


DRAFT



WCPSS Student Assignment Planning
Proposed Base Attendance Areas - Draft 1
Broughton HS - 2023-24

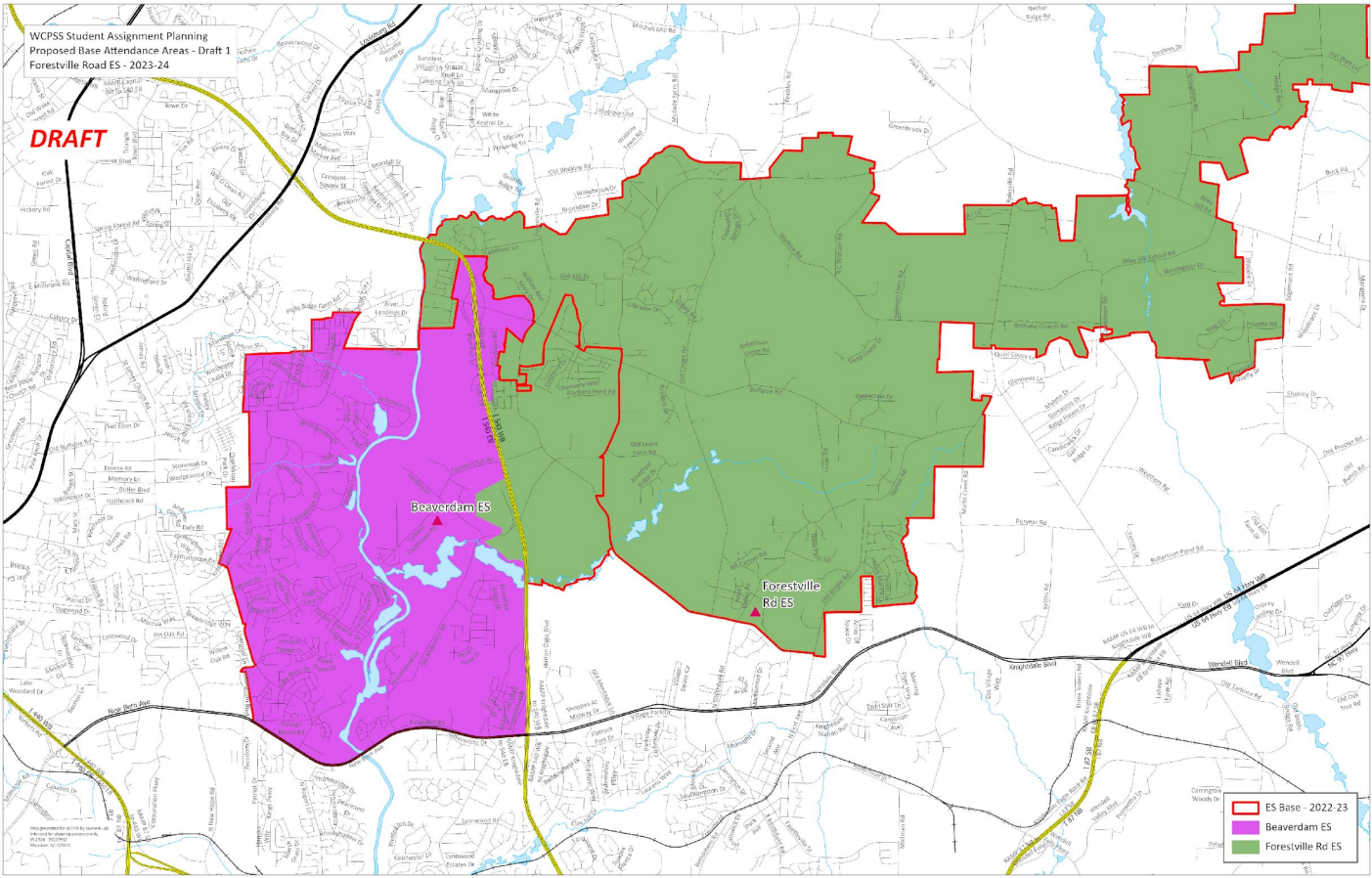
DRAFT



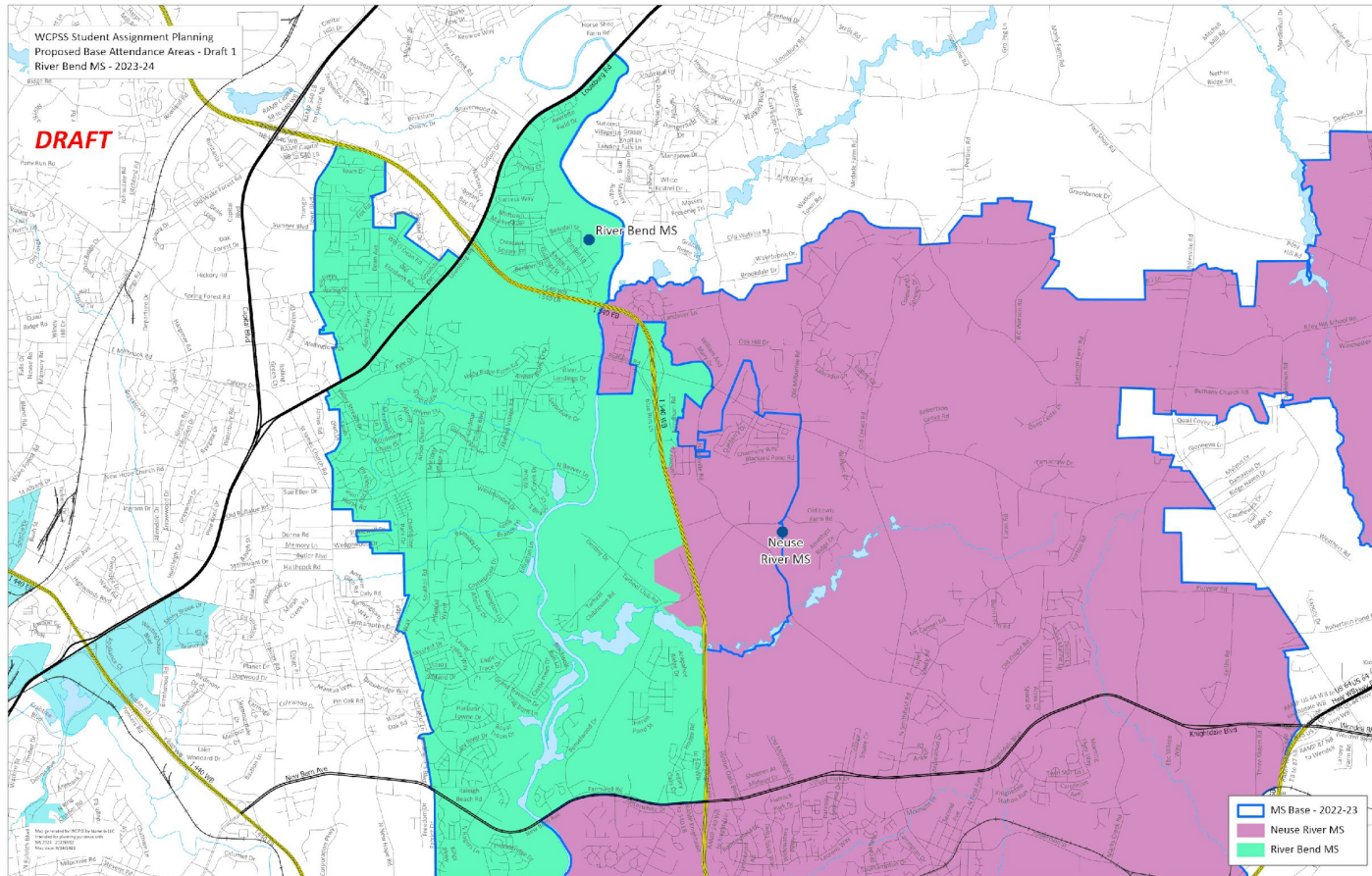
This map was created by WCPSS GIS Services on 08/22/2023. All rights reserved. No warranty is made.

HS Base - 2022-23
Broughton HS
Sanderson HS

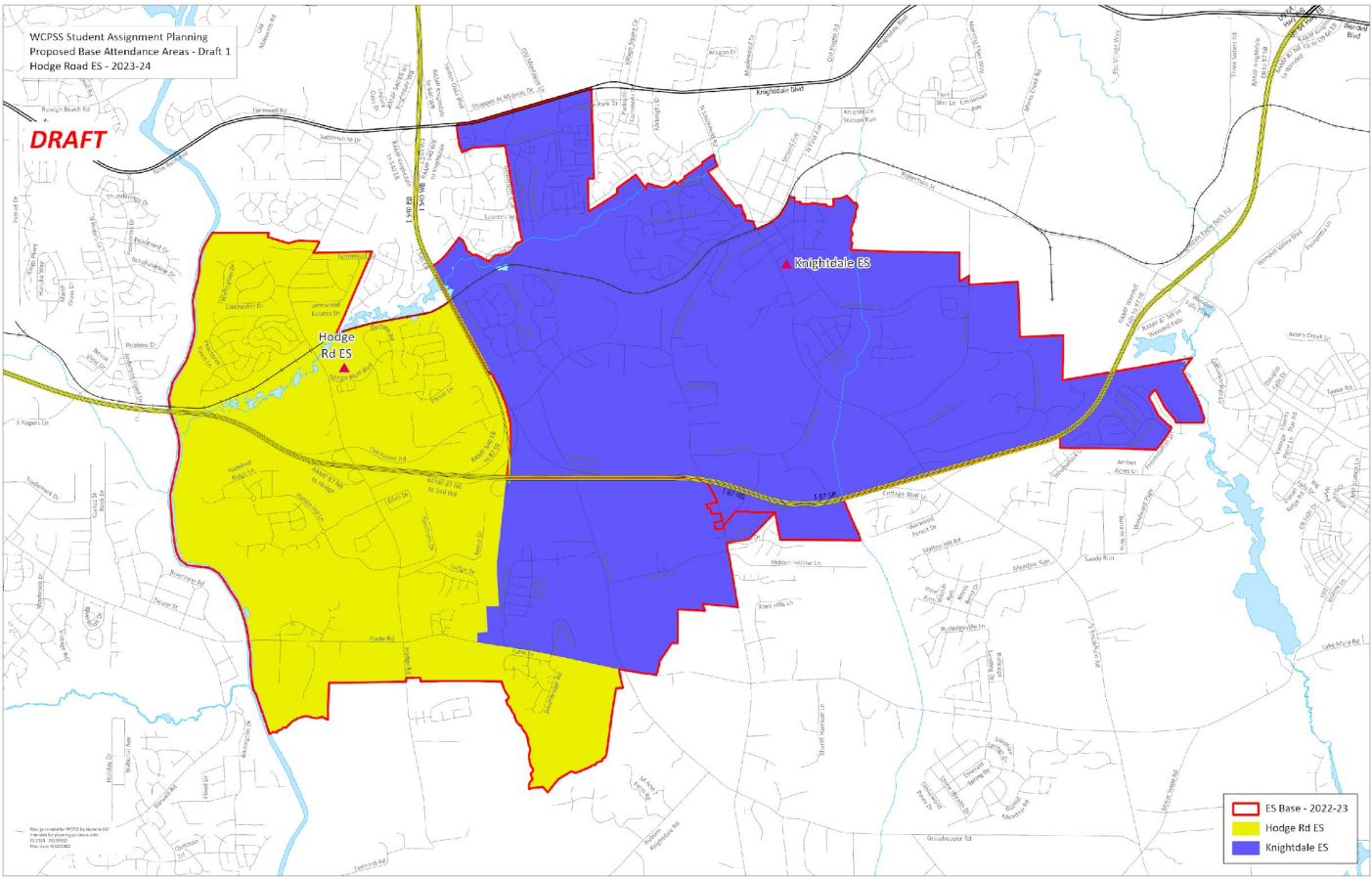
DRAFT



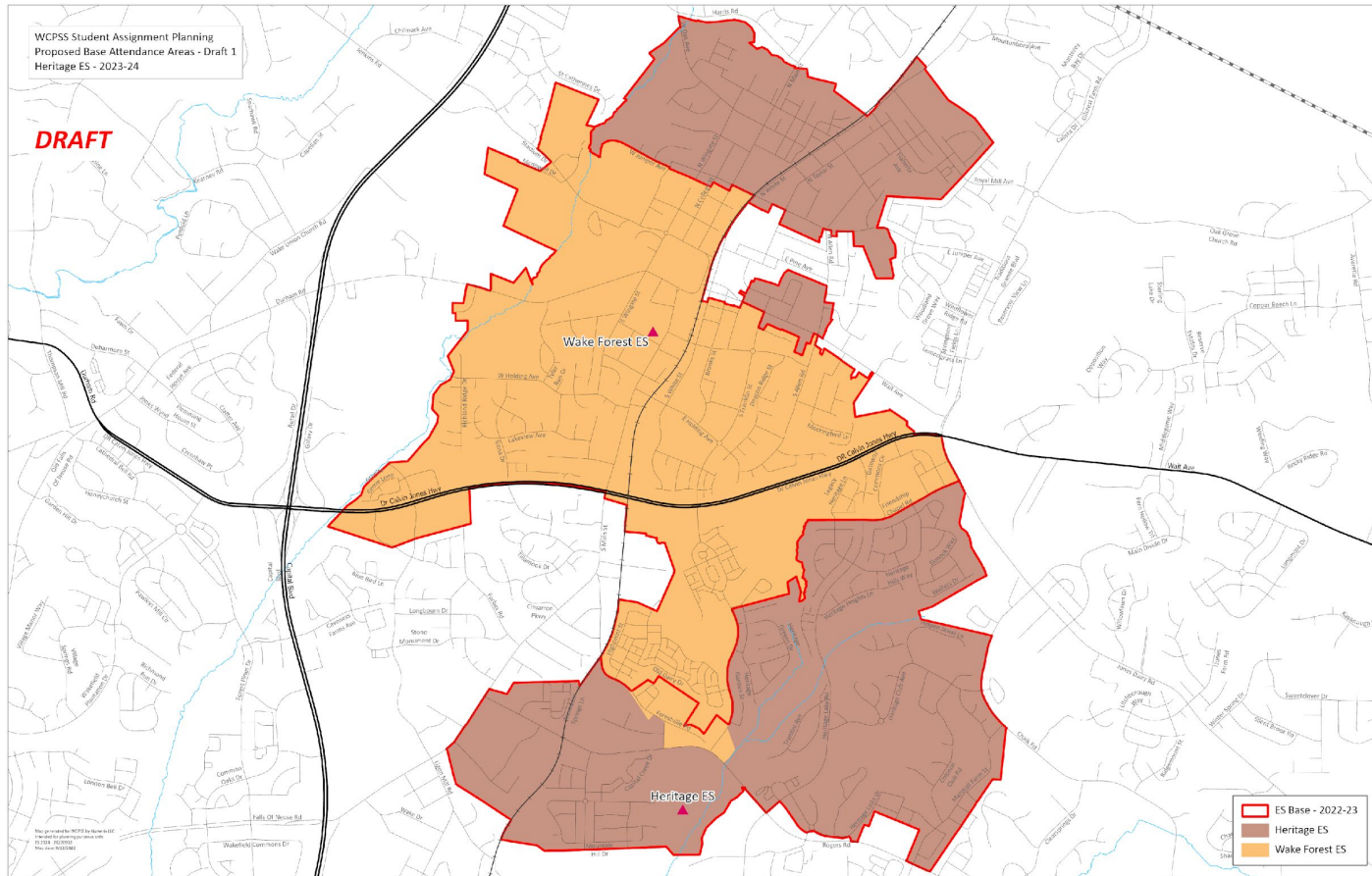
DRAFT



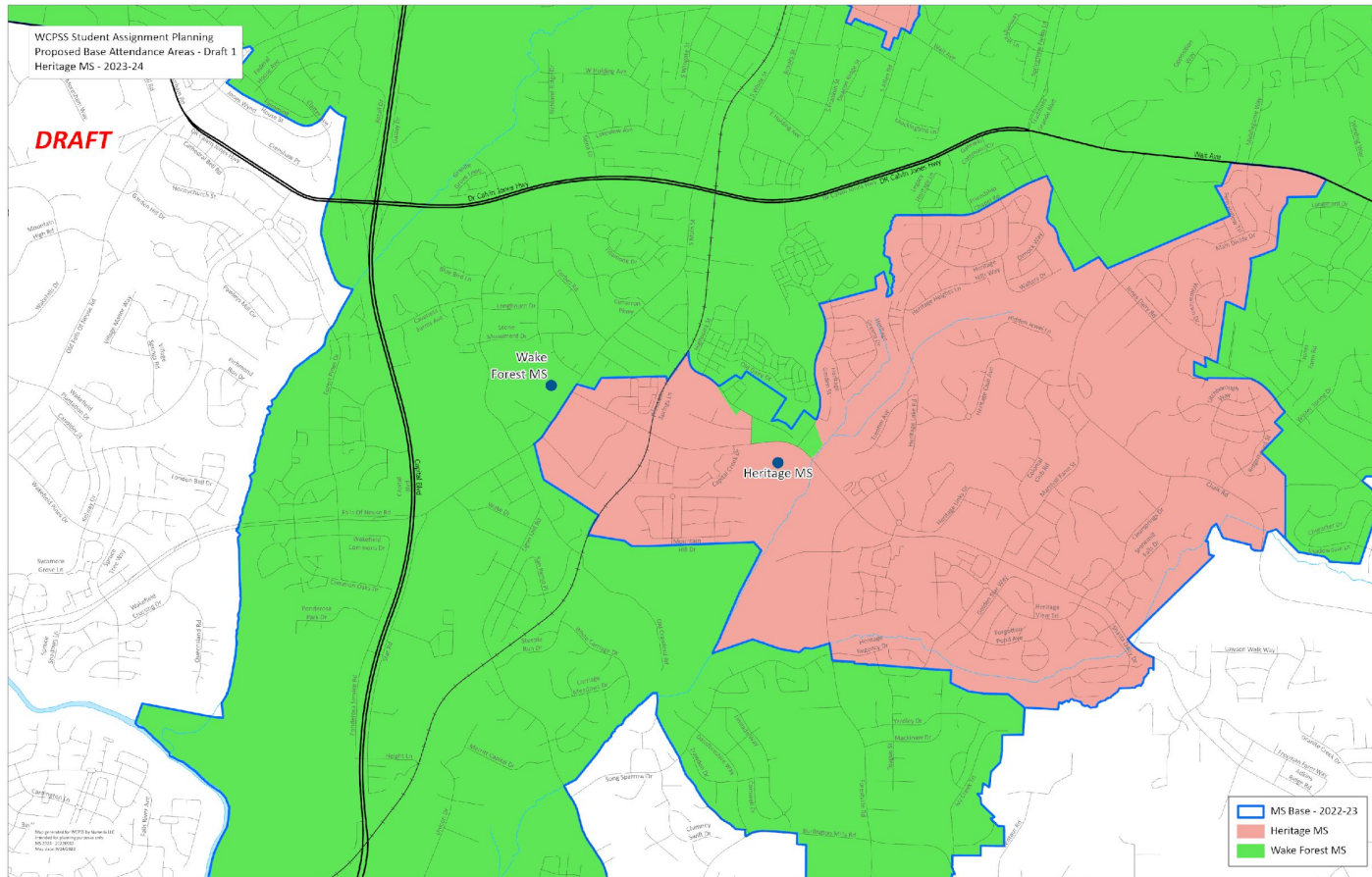
DRAFT



DRAFT

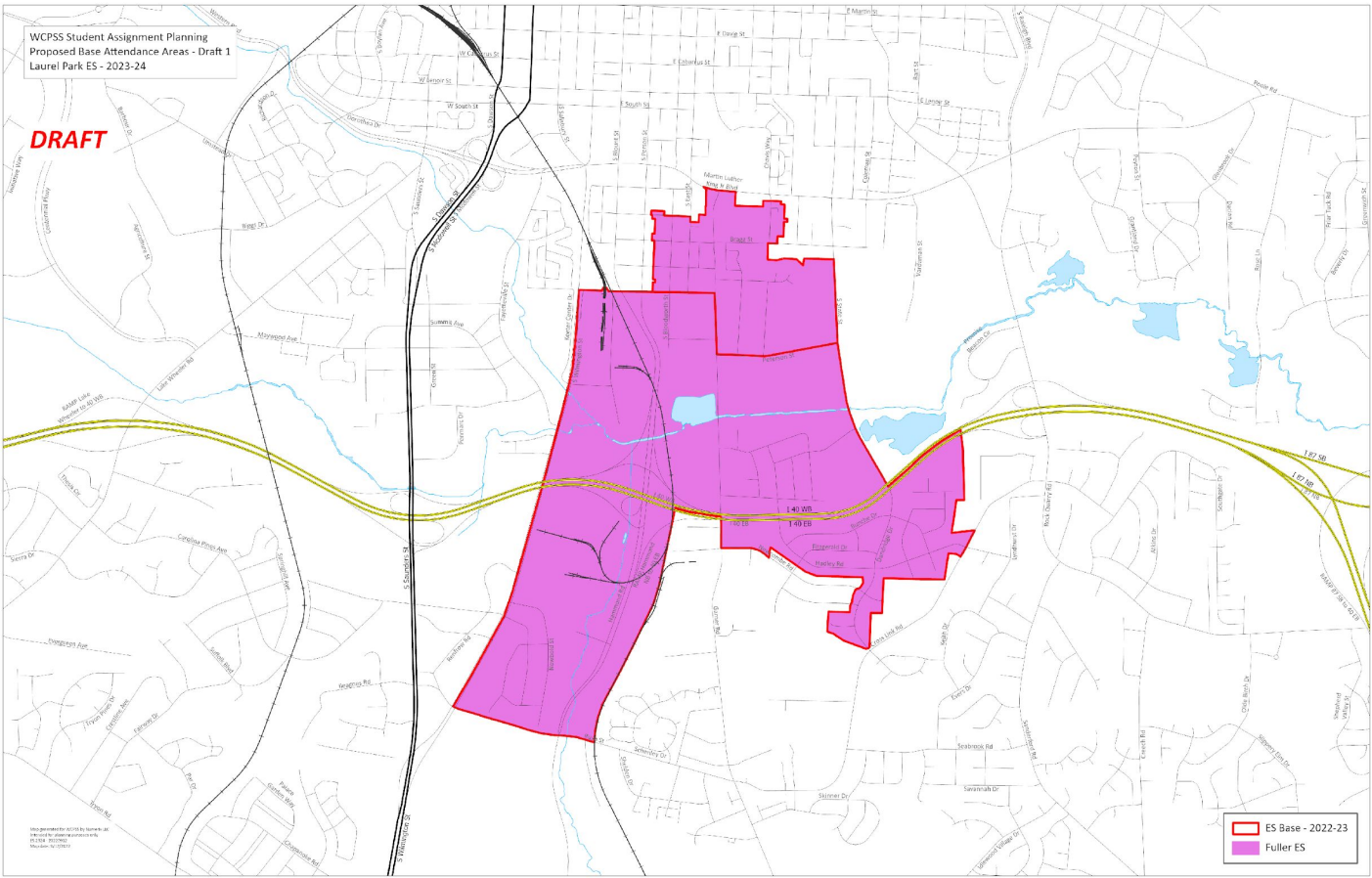


DRAFT



WCPSS Student Assignment Planning
Proposed Base Attendance Areas - Draft 1
Laurel Park ES - 2023-24

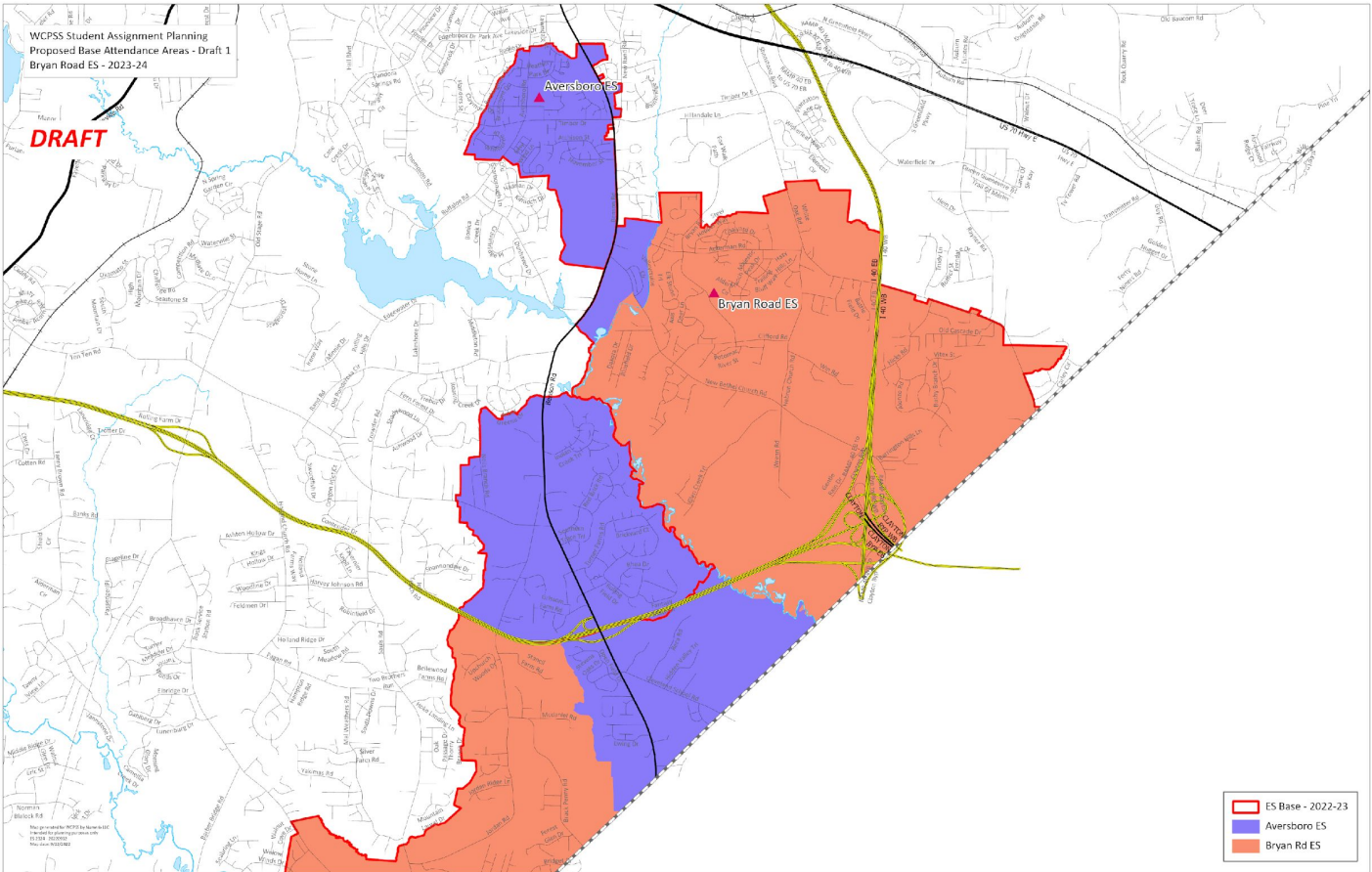
DRAFT



Map generated by WCPSS by Tomerik at
11/16/2022 10:00 AM
Map Date: 11/16/2022
Map Scale: 1:10000

ES Base - 2022-23
Fuller ES

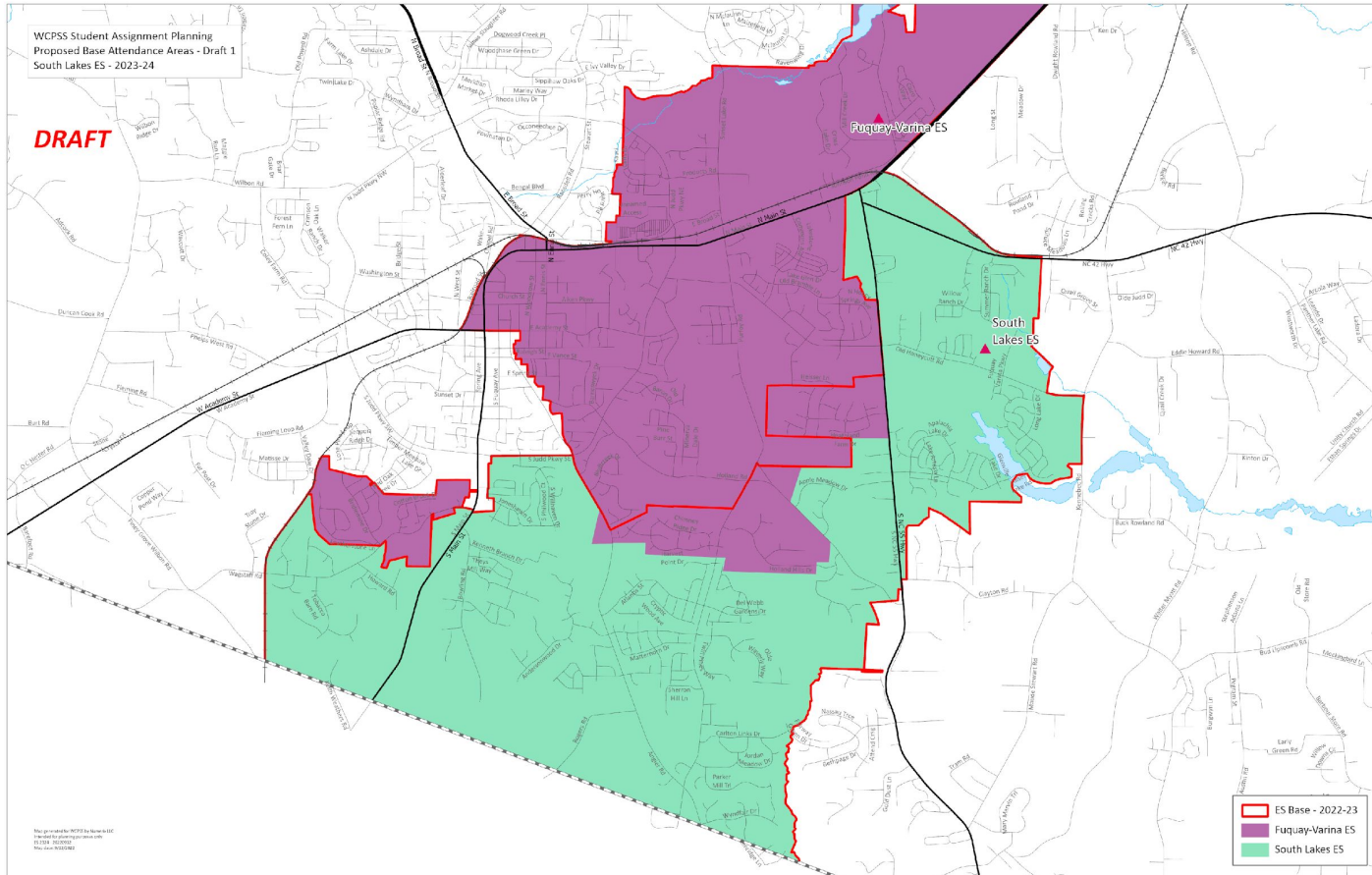
DRAFT



- ES Base - 2022-23
- Aversboro ES
- Bryan Rd ES

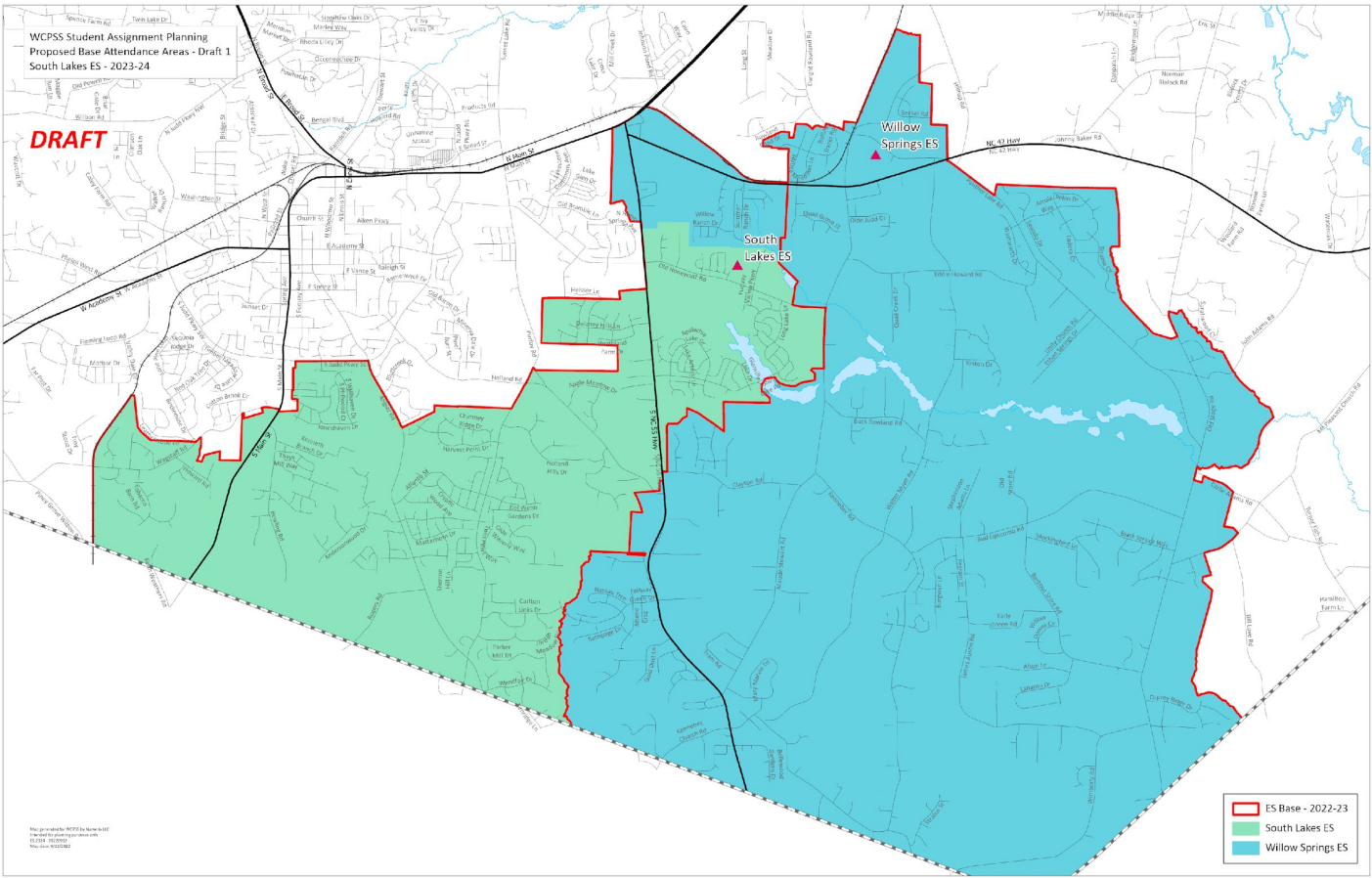
WCPSS Student Assignment Planning
Proposed Base Attendance Areas - Draft 1
South Lakes ES - 2023-24

DRAFT



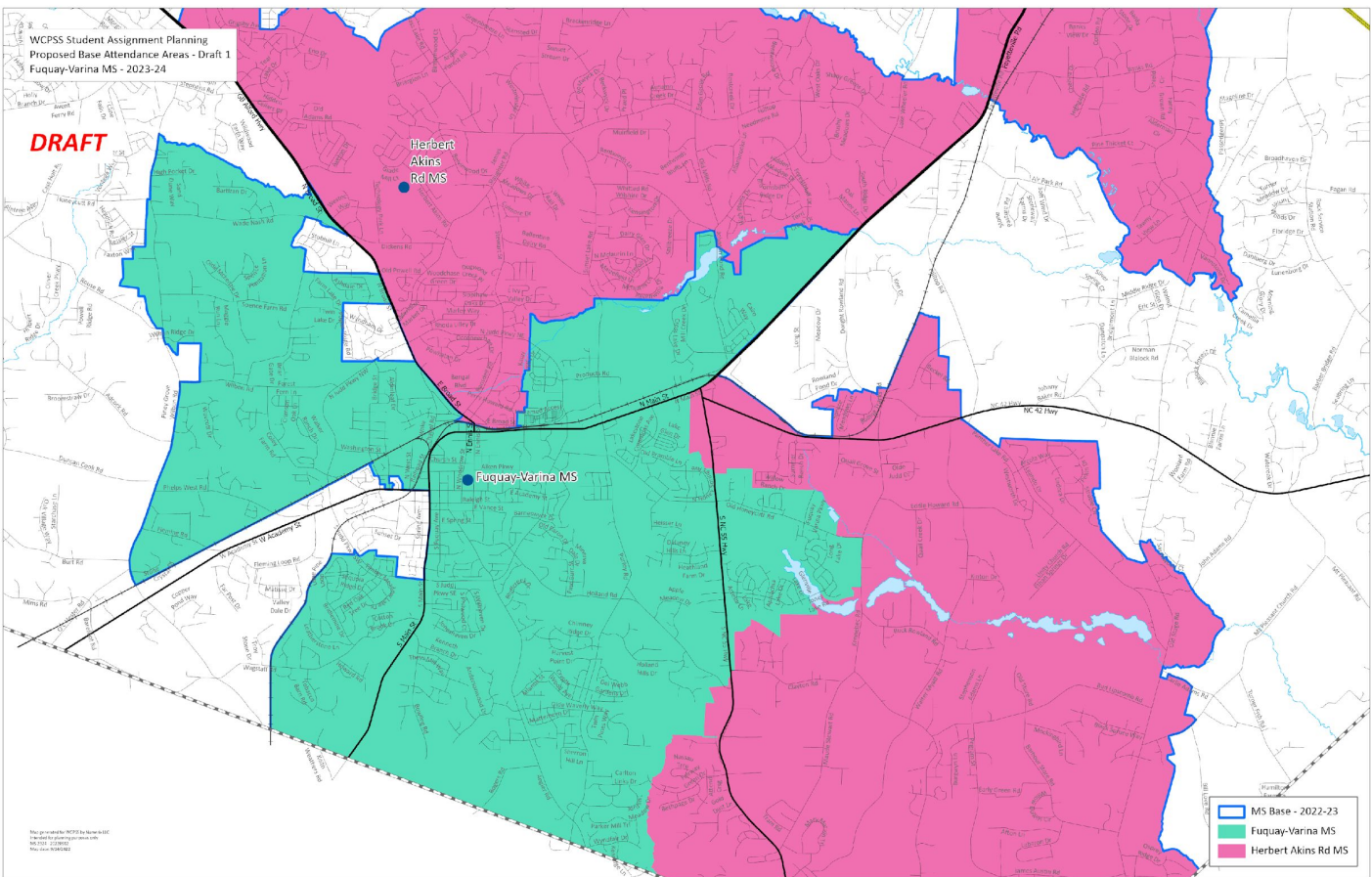
WCPSS Student Assignment Planning
Proposed Base Attendance Areas - Draft 1
South Lakes ES - 2023-24

DRAFT



- ES Base - 2022-23
- South Lakes ES
- Willow Springs ES

DRAFT

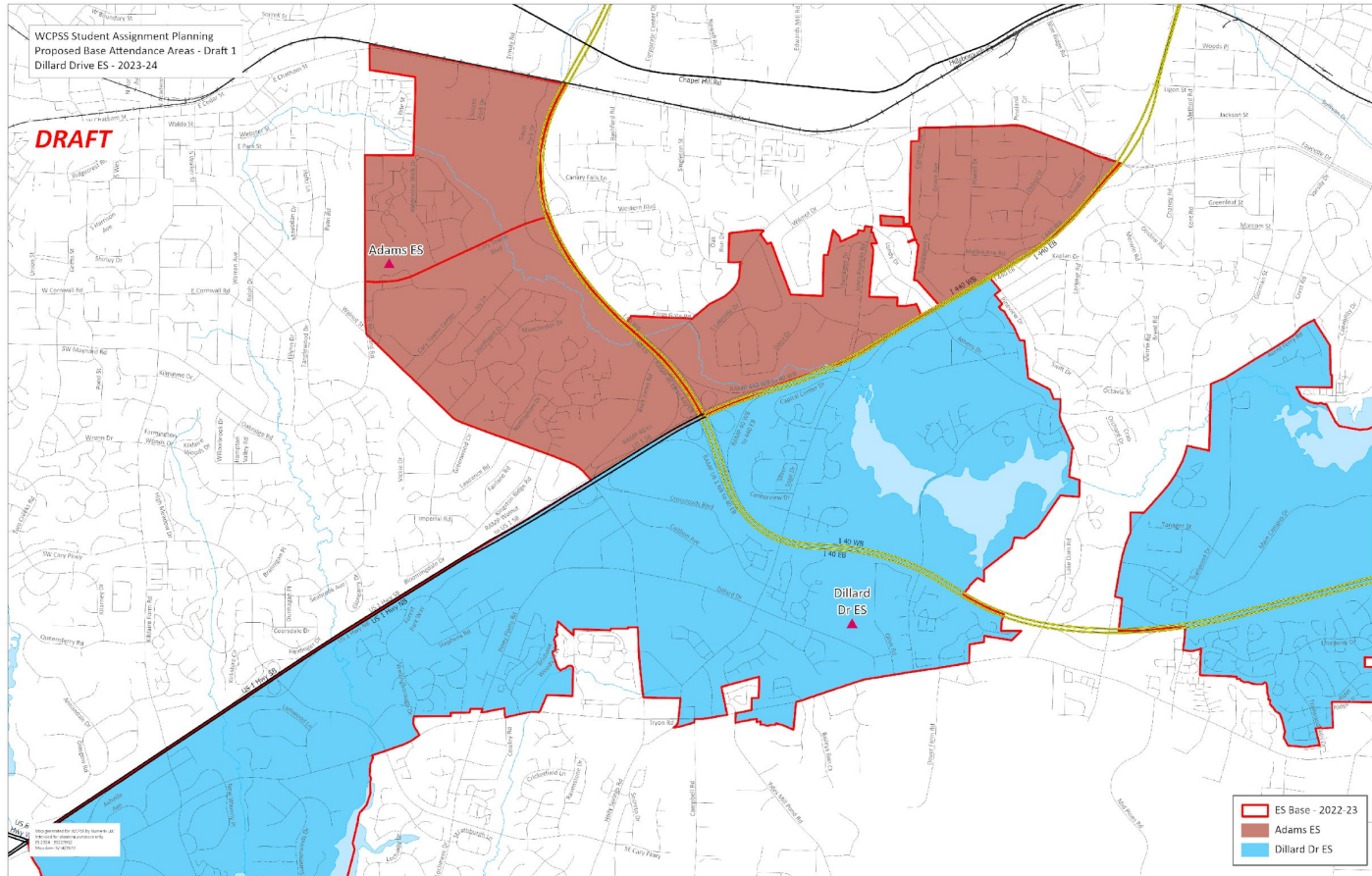


Map prepared by WCPSS GIS Services
10/2023
Map Scale: 1:24,000

- MS Base - 2022-23
- Fuquay-Varina MS
- Herbert Akins Rd MS

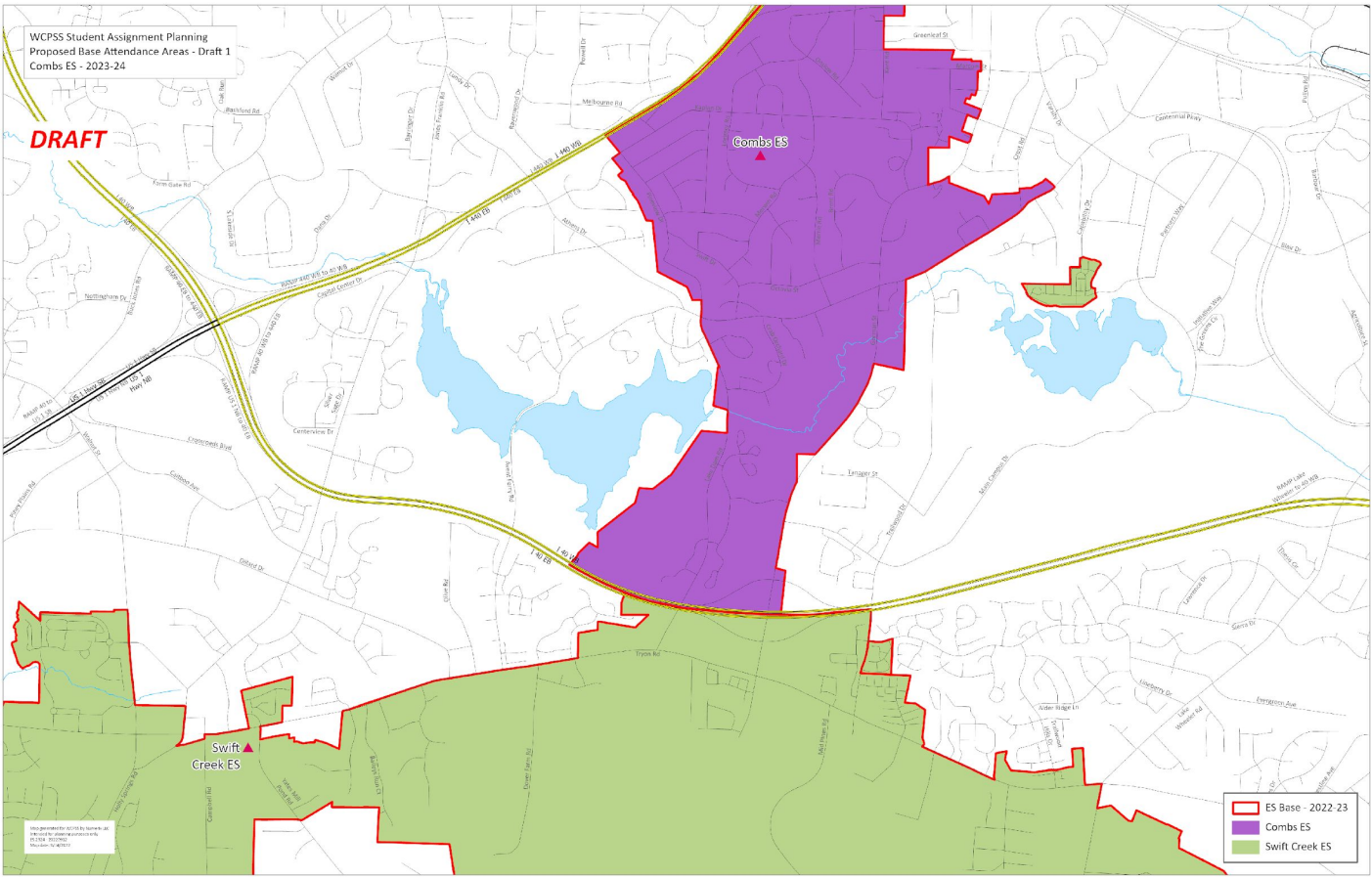
WCPSS Student Assignment Planning
Proposed Base Attendance Areas - Draft 1
Dillard Drive ES - 2023-24

DRAFT



WCPSS Student Assignment Planning
Proposed Base Attendance Areas - Draft 1
Combs ES - 2023-24

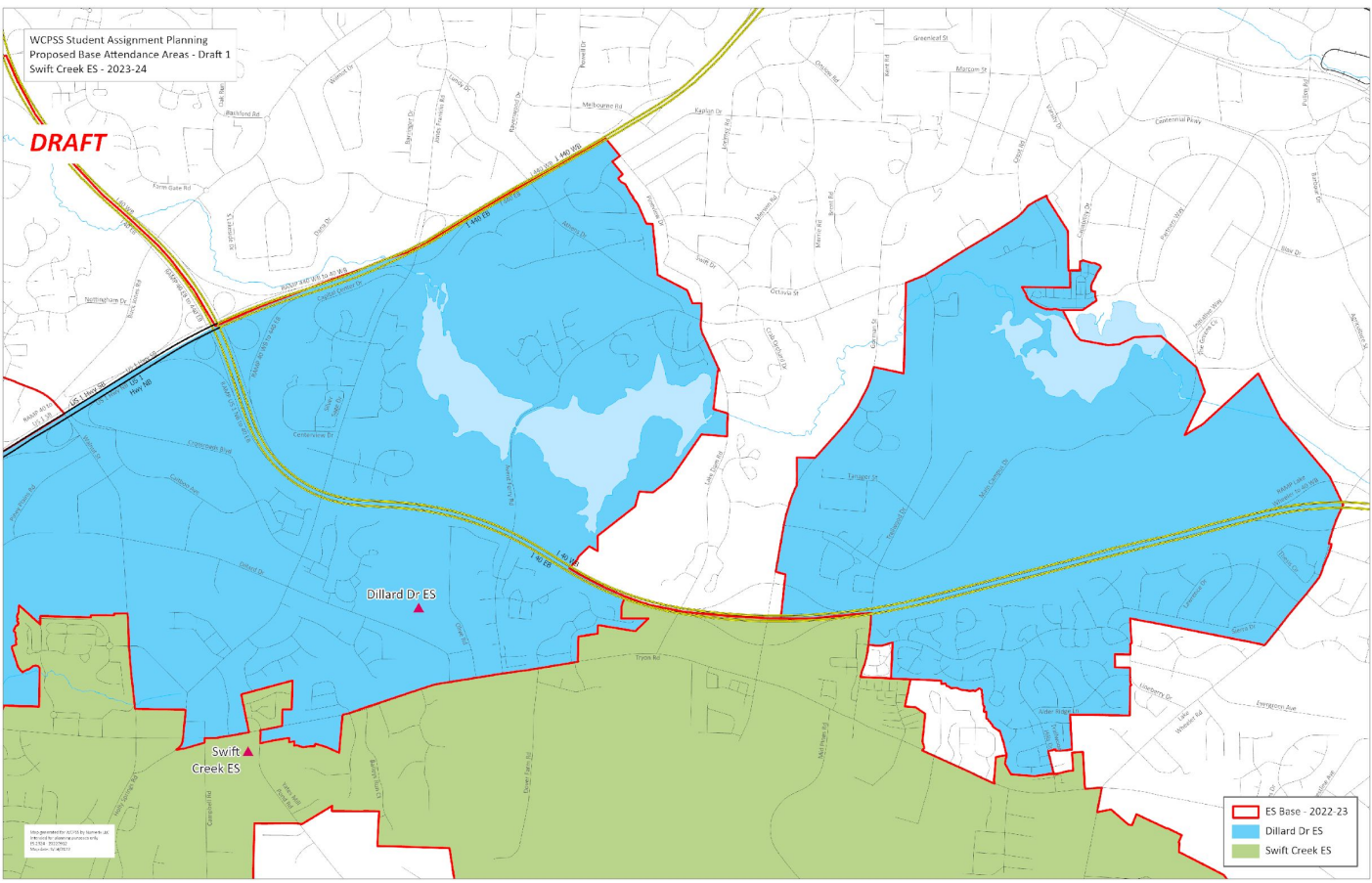
DRAFT



- ES Base - 2022-23
- Combs ES
- Swift Creek ES

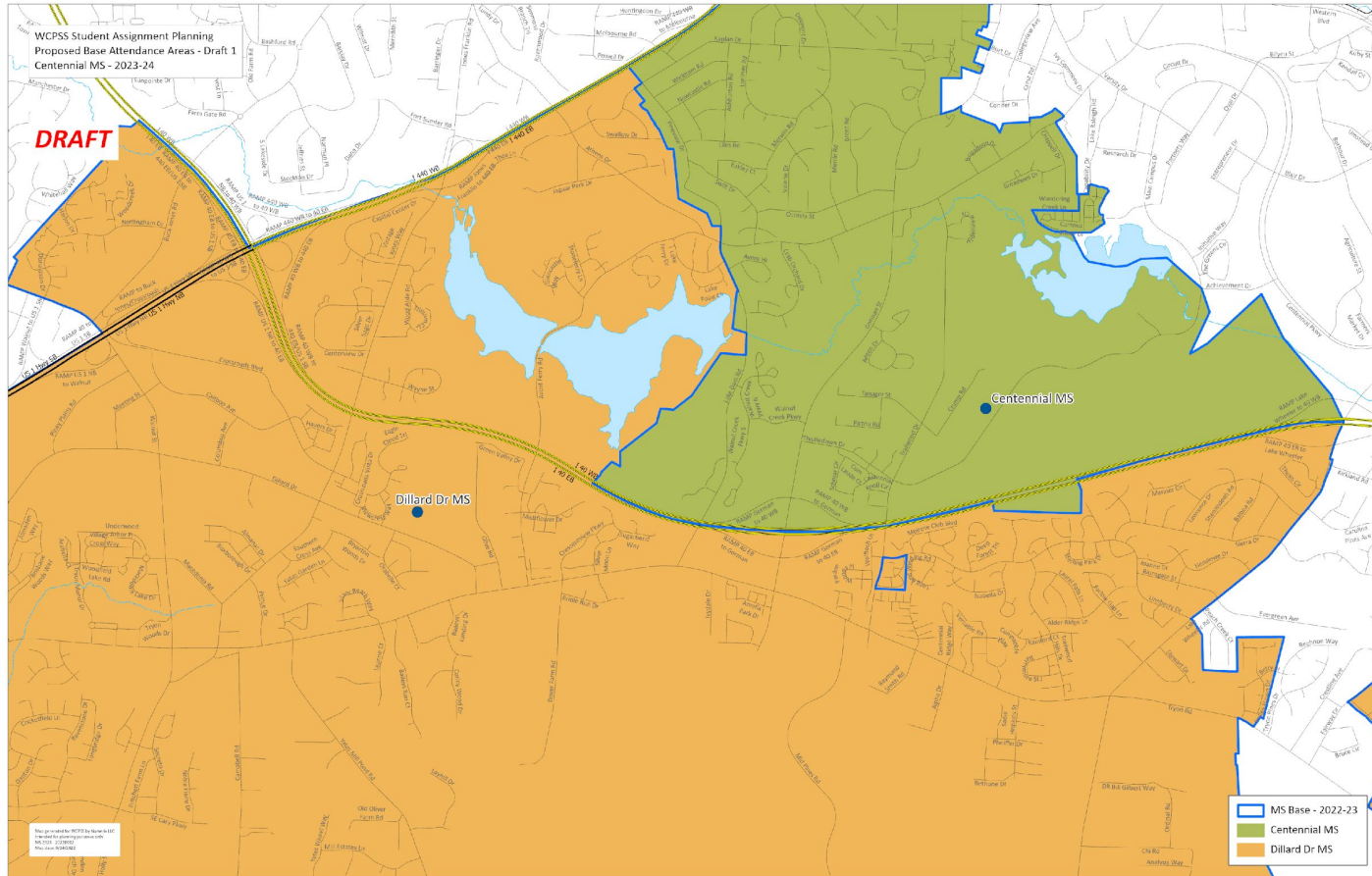
WCPSS Student Assignment Planning
Proposed Base Attendance Areas - Draft 1
Swift Creek ES - 2023-24

DRAFT

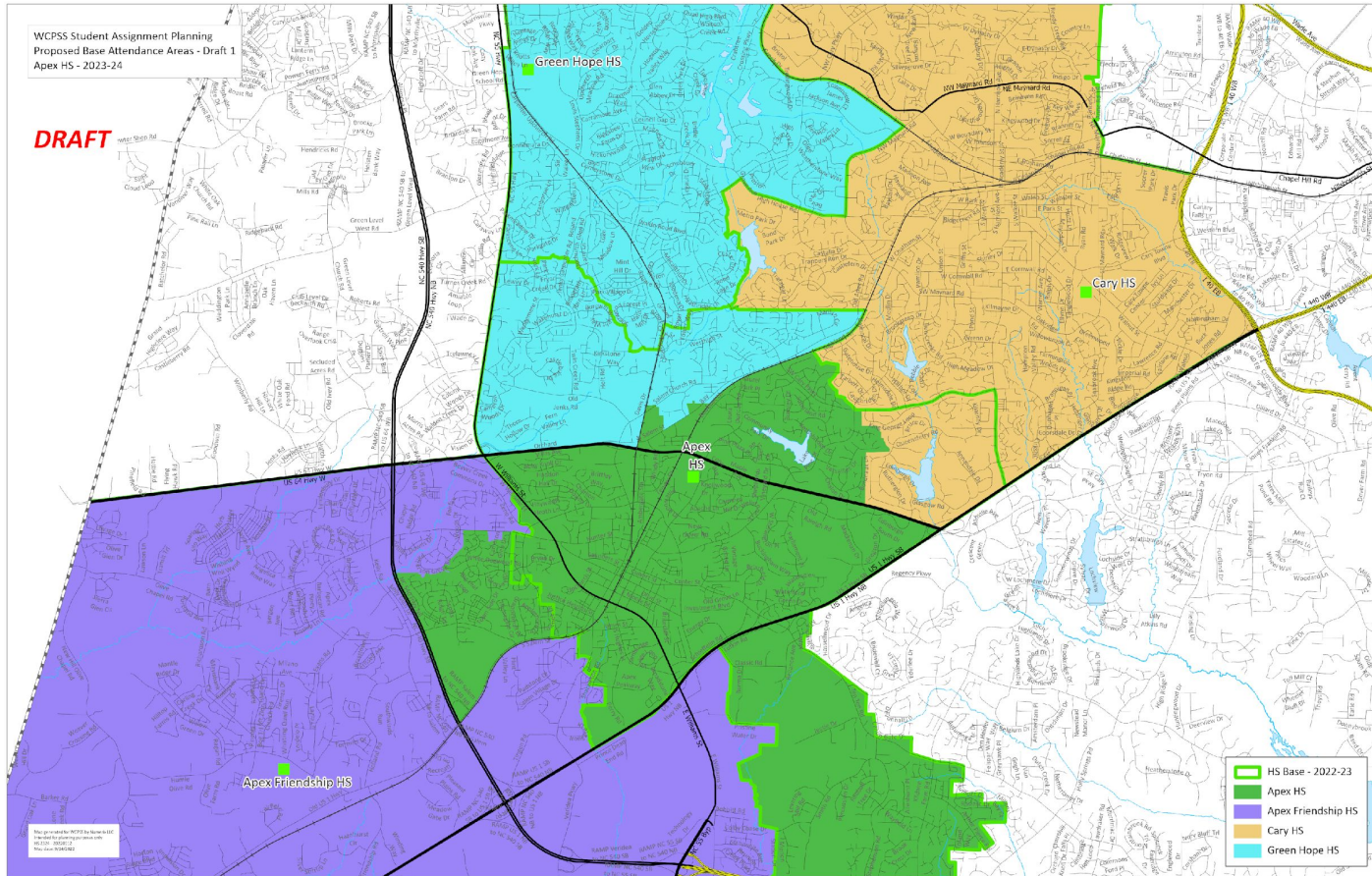


WCPSS Student Assignment Planning
Proposed Base Attendance Areas - Draft 1
Centennial MS - 2023-24

DRAFT



DRAFT



Data Reports

Reports Included in the Agenda Attachments for the Work Session:

- **2022-2023 Base Population Report (pdf file)**
 - data related to the number of students assigned as base to each school (indicates number of base students attending the base assigned school and number of base students attending other schools as application, transfer, etc.)
- **2022-2023 School Population Report (pdf file)**
 - data related to the actual enrollment at each school (includes base, application, transfer, etc.)