

WCPSS 2023-2024 Enrollment Plan

Draft #2

A Multi-year Approach to Growth Management

Prepared by the Office of Student Assignment

Board of Education Work Session
October 18, 2022

Purpose

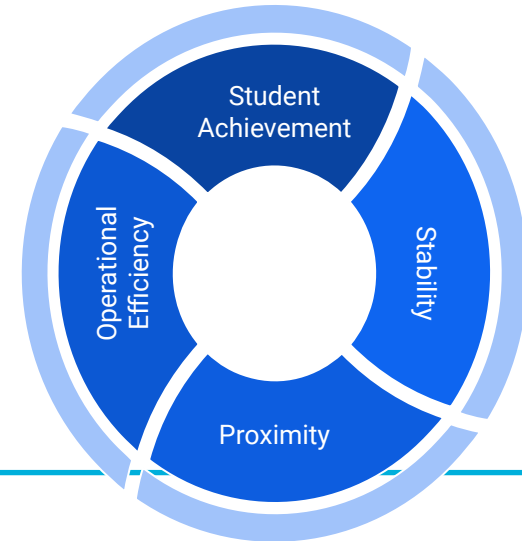
Staff is here today to share the second draft of the 2023-2024 Enrollment Plan.

Our goal for today's meeting is to share updates from our public engagement activities and revisions to the proposed enrollment plan. Additionally, we are requesting feedback from the Board to assist staff in preparing a Final Draft of the 2023-2024 Enrollment Plan for approval by the Board.

WCPSS Board Policy 4150: School Assignment and Transfers

Section A. Drawing of School Attendance Areas

1. The assignment areas will be developed by balancing, to the extent reasonable, the goals and factors set forth below and will include target ranges, where appropriate, to accomplish these goals and factors:
 - a. **Student Achievement**
 - b. **Stability**
 - c. **Proximity**
 - d. **Operational Efficiency**



- **Updates**

- Public Engagement Progress
- Review Current Capital Improvement Plan (CIP)
- Review Recommended Stability Rules for 2023-24

- **Revisions to Draft 1 Enrollment Plan Recommendations**

- Revisions to Base Assignment Changes

- **Timeline / Next Steps**

- **Addendum**



Updates



Public Engagement Progress: ThoughtExchange

Public Engagement Progress: ThoughtExchange

ThoughtExchange Summary:

September 20 - October 7, 2022:

“What are your thoughts and questions about the proposed changes?”

 **2,088**
Participants


 **1,421**
Thoughts

 **26,468**
Ratings


- Which of the following best describes where you live within Wake County?

- Which of the following best describes your role?

 **1990**
Responses

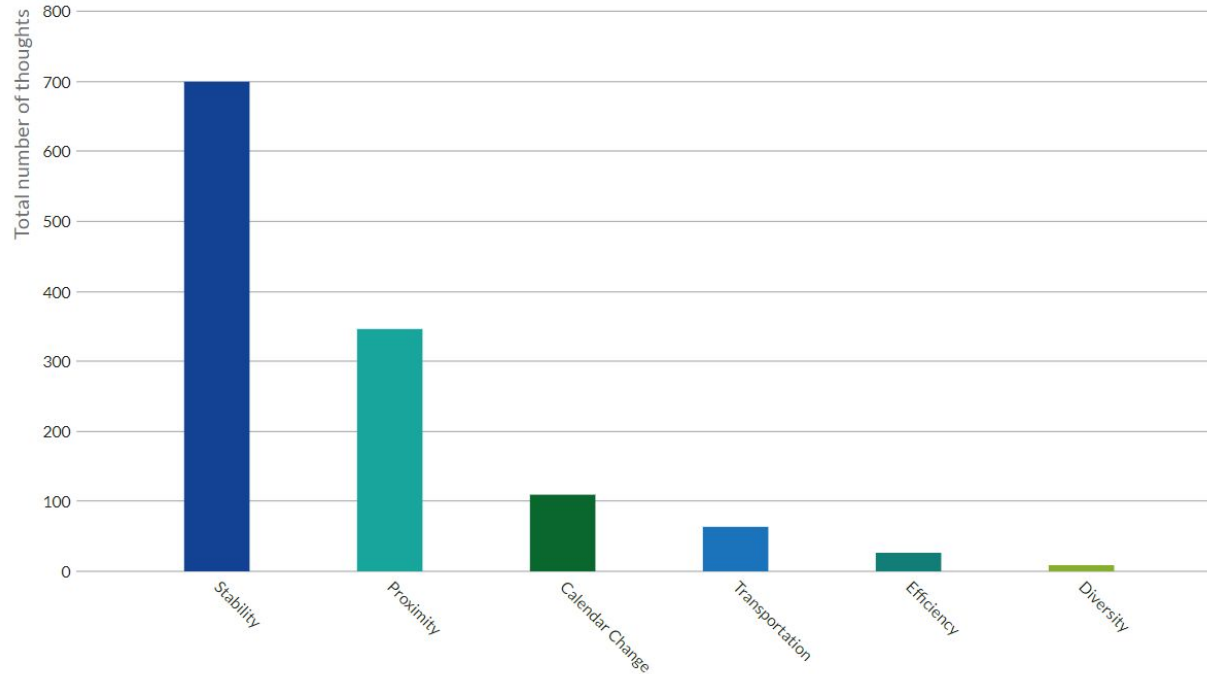
%		Answer (Multi-select)
94%	(1,880)	Parent/Guardian
3%	(63)	Student
2%	(41)	Community Member
2%	(59)	Staff



%		Answer
8%	(151)	Central Area
4%	(83)	Eastern Area
8%	(140)	Northern Area
5%	(101)	Northeastern Area
7%	(127)	Northwestern Area
12%	(212)	Southern Area
10%	(189)	Southeastern Area
30%	(543)	Southwestern Area
16%	(287)	Western Area

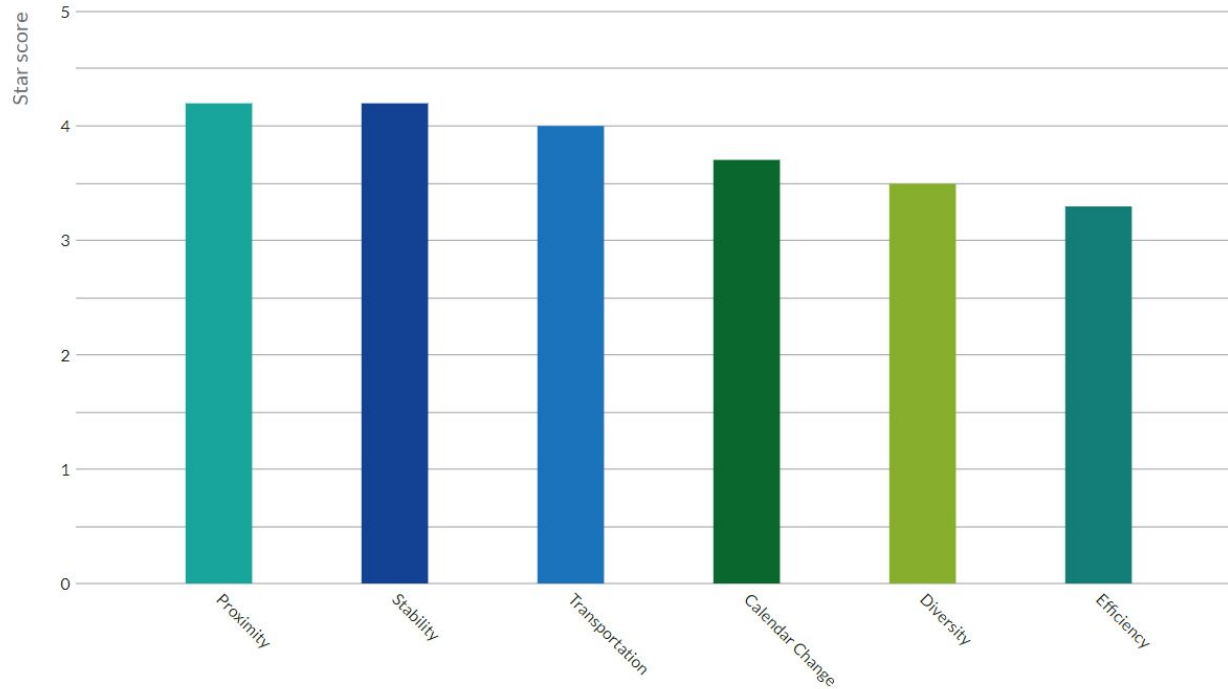
Public Engagement Progress: ThoughtExchange

Quantity of Thoughts by Theme / Topic



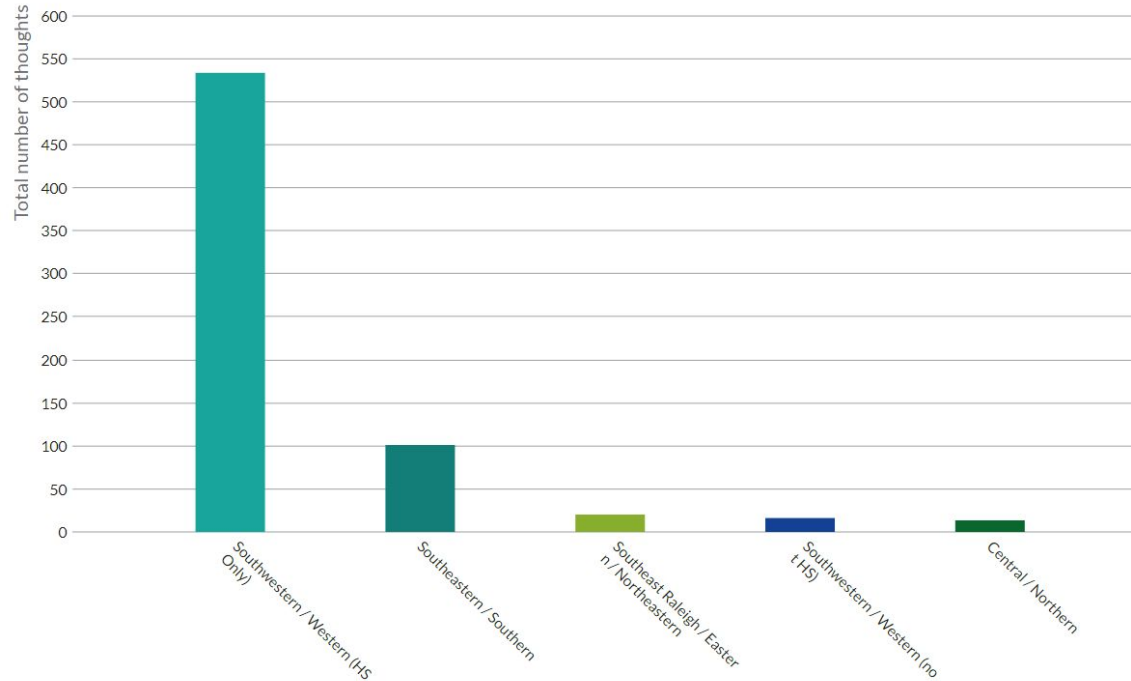
Public Engagement Progress: ThoughtExchange

Rating of Thoughts by Theme / Topic



Public Engagement Progress: ThoughtExchange

Quantity of Thoughts by Theme / Area



Key Takeaways

- Support for the recommended stability rules
- Support for recommendations that allow families to attend a more proximate school
- Recognition that high rates of population growth in some areas of the county impact the need for changes in school assignments
- Preference to wait until new schools open to reassign students
- Concerns about stability transfers being granted without district transportation



Public Engagement Progress: Public Information Sessions

Public Engagement Progress: Information Sessions

Virtual Public Information Sessions

Session	Date	Areas	Participants (Live)	Views (Recording)*
1	September 28	Central & Northern	18	78
2	September 29	Southeast Raleigh, Eastern & Northeastern	8	151
3	October 5	Southeastern & Southern	32	85
4	October 6	Southwestern & Western	52	92
Totals			111	406

**as of 5:00 pm on October 11, 2022*

Public Engagement Progress: Information Sessions

Key Takeaways

Session 1 - Central & Northern Areas

- No concerns expressed regarding recommendations in these areas
- Clarifications regarding stability rules
- Clarifications about recommendations for other areas of the county

Session 2 - Southeast Raleigh, Eastern & Northeastern Areas

- Concerns about developments coming on line without sufficient capacity in nearby schools
- Clarifications regarding stability rules
- Clarifications about recommendations for other areas of the county

Key Takeaways (continued)

Session 3 - Southeastern & Southern Areas

- Concerns that additional middle schools for this area are not included in the current CIP
- Concerns that Herbert Akins Road MS is not the closest school for families impacted by the recommendations
- Concerns about calendar alignment for younger siblings of high school students
- Clarifications regarding stability rules
- Concerns that stability transfers are without transportation

Key Takeaways (continued)

Session 4 - Southwestern & Western Areas

- Concerns that Green Hope HS is not the closest school for families impacted by the recommendations
- Clarifications regarding why Green Level HS is not included as an option to relieve overcrowding at Apex Friendship HS
- Clarifications regarding why reassignment is needed for 2023-24 when Felton Grove HS is scheduled to open in 2025-26
- Clarifications regarding stability rules
- Concerns that stability transfers are without transportation



Public Engagement Progress: Questions & Answers

Public Engagement Progress: Q&A

Question:

If I have a rising 2nd and 4th grade student that are impacted by the assignment plan, will they be allowed to stay at their current school? Also, if I have a rising kindergarten student - can they join their older siblings?

Yes

Once the final plan is approved by the Board, impacted families will be contacted with specific instructions on how to submit their requests to remain at their current school, without transportation.

In addition, if you have pre-registered your rising kindergartner, you will be able to submit the request for this future student to join their older siblings through this same process.

Public Engagement Progress: Q&A

Question:

My student is currently in the AOIT program at Apex HS and is in the proposal to be reassigned to Green Hope HS, can my student stay at Apex HS through 12th grade?

Yes

Once the final plan is approved by the Board, impacted families will be contacted with specific instructions on how to submit their requests to remain at their current school, without transportation.

Transfers approved through this process are valid through the terminal grade of the school.

Public Engagement Progress: Q&A

Question:

Once I submit a stability transfer, will I need to re-submit the request each year thereafter?

No

Stability transfers are valid through the terminal grade of the school.

- Elementary school stability transfers are **valid through the 5th grade** and do NOT need to be requested each year.
- Middle school stability transfers are **valid through the 8th grade** and do NOT need to be requested each year.
- High school stability transfers are **valid through the 12th grade** and do NOT need to be requested each year.

Public Engagement Progress: Q&A

Question:

My student currently walks to Apex HS from one of the neighborhoods recommended to be assigned to Green Hope HS. Why are you recommending assigning them to a school farther away?

The neighborhoods North of US Hwy 64 that are recommended for assignment to Green Hope HS are more proximate to Green Hope HS than other portions of the Apex HS base.

While not the most proximate school for these neighborhoods, Green Hope HS is the most proximate school with available capacity to support these neighborhoods over time.

In addition, these neighborhoods are on the opposite side of US Hwy 64 from Apex HS and are not located in a “no transportation zone” for the school.

Public Engagement Progress: Q&A

Question:

Why wasn't Green Level HS considered as an option for relieving crowding at Apex Friendship HS in this plan?

Although Green Level HS may be more proximate for some families, the existing base area for this school is growing and will continue to grow. In addition, the school is already nearing capacity with its current enrollment.

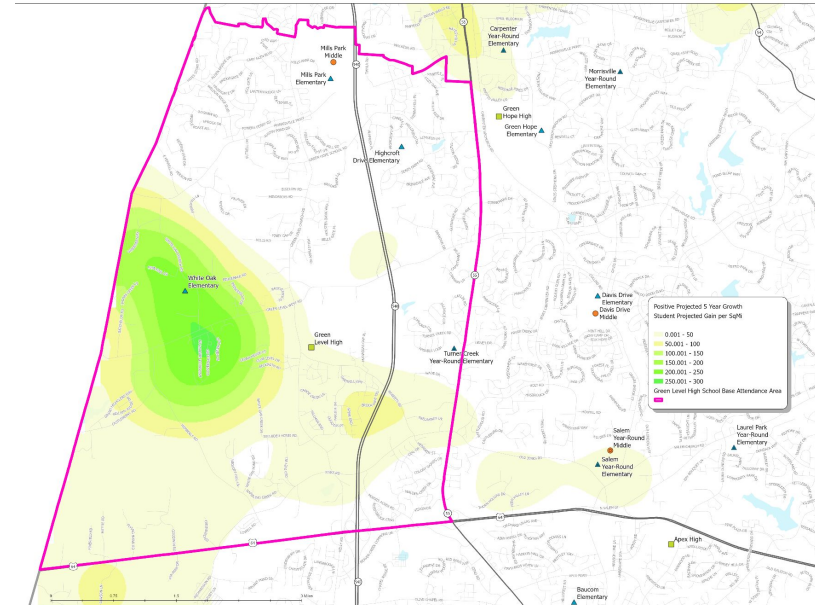
Public Engagement Progress: Q&A

Current Crowding for Southwestern & Western Area High Schools

School	Capacity	Crowding
Apex HS	2240	112.7%
Apex Friendship HS	2384	117.2%
Cary HS	2234	97.2%
Green Level HS	2203	93.6%
Green Hope HS	2495	81.1%
Holly Springs HS	1992	108.7%

Data source, 9/6/22 OoSA student locator file

5-year Projected Positive Enrollment Growth for Green Level HS Base Area



Public Engagement Progress: Q&A

Question:

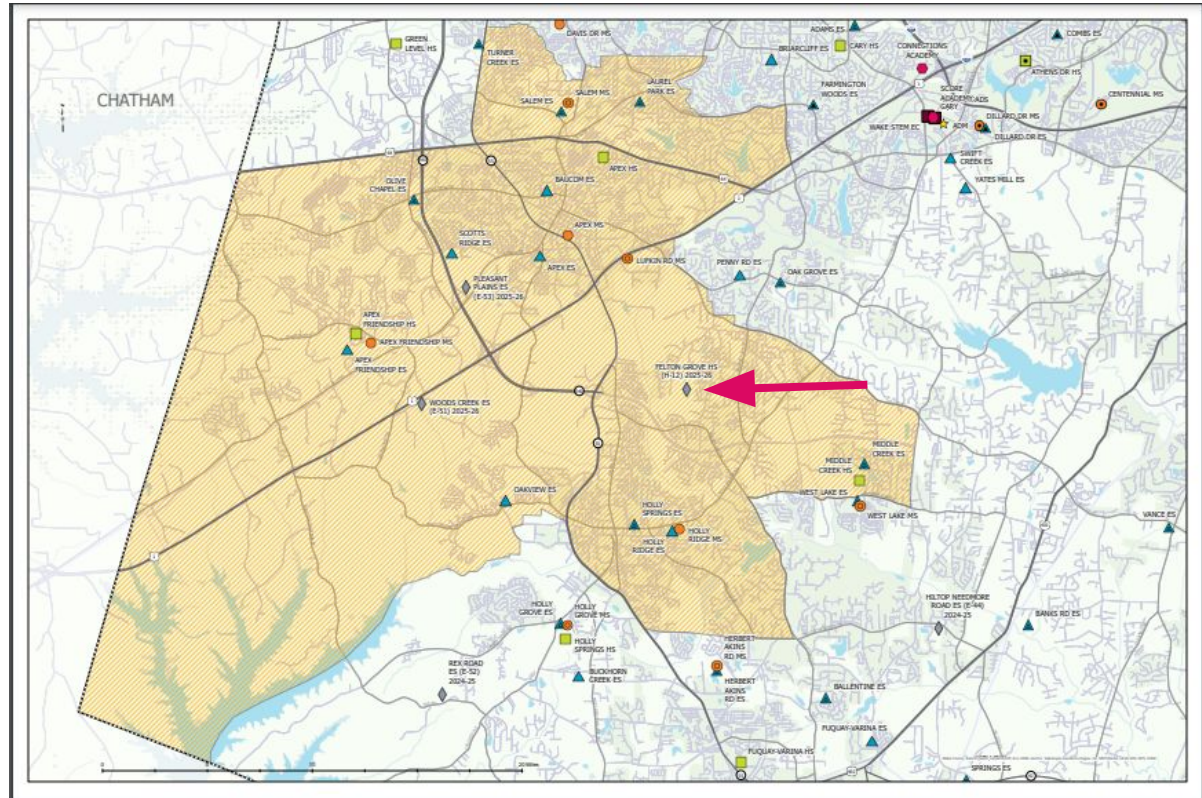
Why aren't neighborhoods in Holly Springs included in the recommendations to relieve crowding at Apex Friendship HS in this plan?

Felton Grove High is projected to open for the 2025-26 school year. We anticipate areas south of US 1 in the existing Apex Friendship High and Apex High base attendance areas, along with portions of Holly Springs High and Middle Creek High base attendance areas, may be impacted by the opening of this new school.

Public Engagement Progress: Q&A

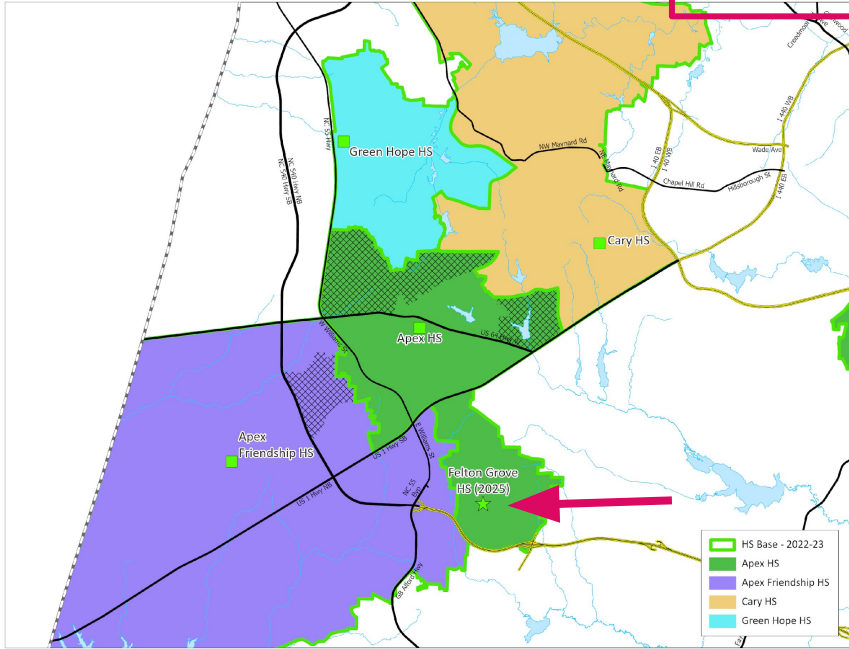
Potential Impact* Map - Felton Grove HS

*NOTE: This is NOT a recommended base attendance area

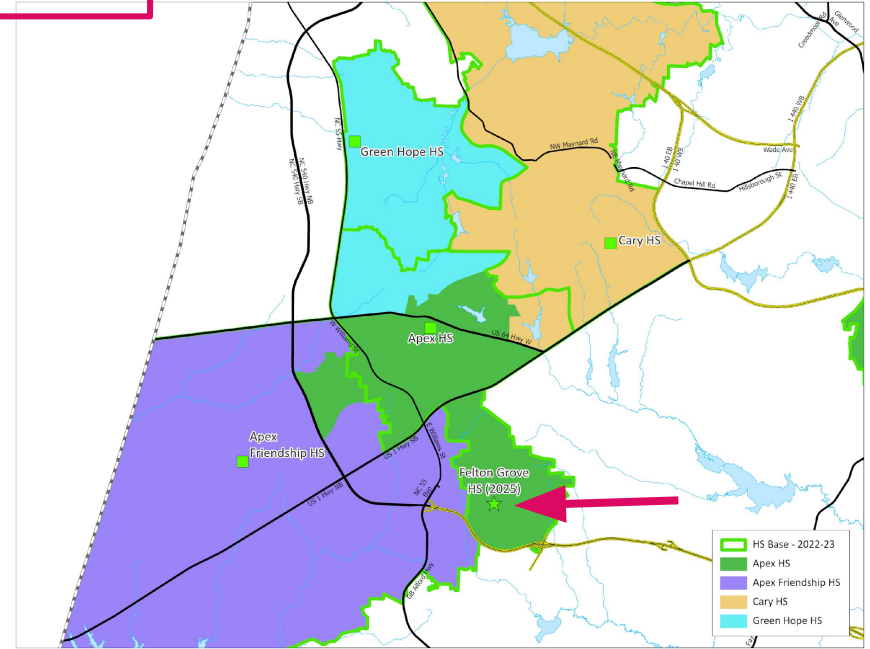


Public Engagement Progress: Q&A

DRAFT #1



Impacted Areas:



Proposed Base Areas

Public Engagement Progress: Next Steps

Draft #2 Public Engagement Activities

- October 18:
 - District website is updated with Draft 2 information (wcpss.net/2023enrollmentproposal)
- October 18 - November 4:
 - Open New ThoughtExchange: “What are your thoughts or questions about the updates included in Draft 2?” (wcpss.net/draft2feedback)
- October 26:
 - Host Draft #2 Public Information Session (6:00-7:30 pm)
- November 10:
 - Special Called Board of Education Meeting - Public Hearing on Student Assignment Plan

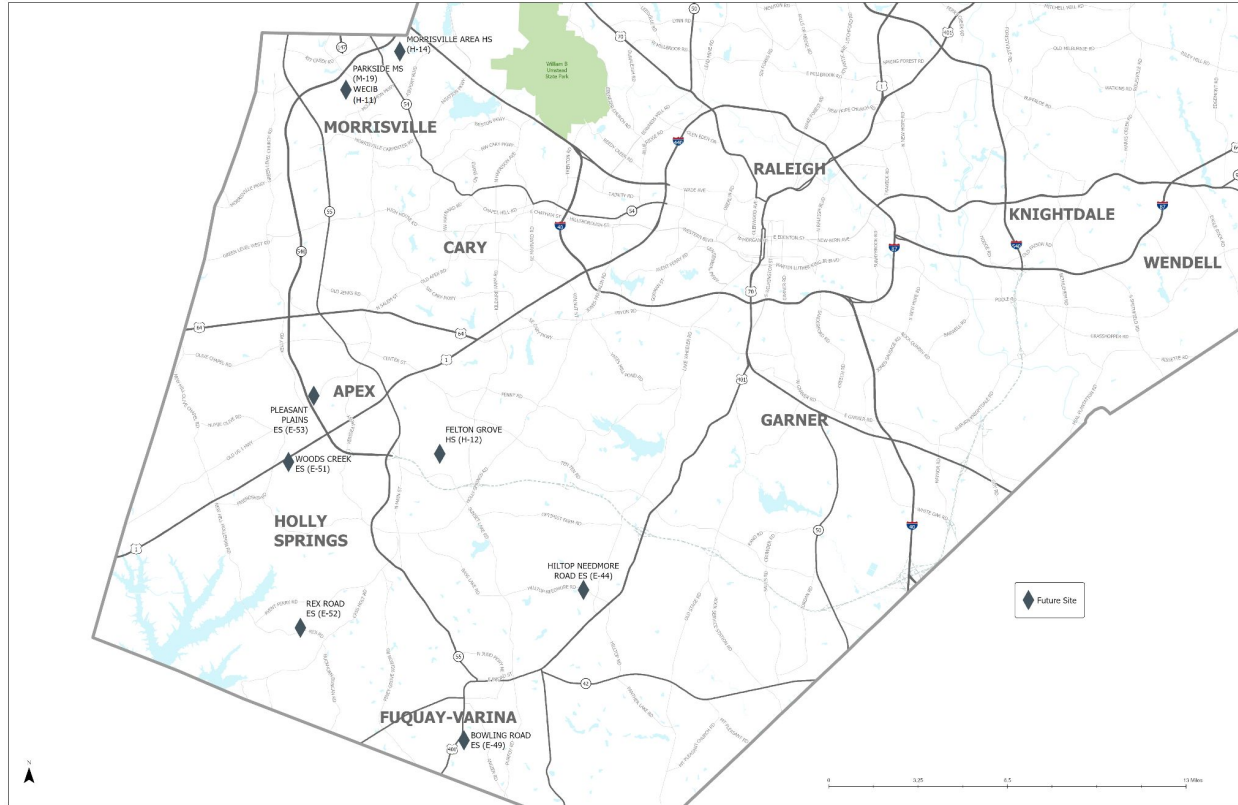
Current CIP: Seven-year Plan for Future School Openings*

Code	School Name	2021-22	2022-23	2023-24	2024-25	2025-26	2026-27	2027-28
H13	Willow Spring HS	H13 HS Lrg						
E24	Barton Pond ES	Brassfield ES	E24 ES					
E41	Apex Friendship ES		E41 ES					
M14	Herbert Akins Road MS		M14 MS					
E51	Woods Creek ES		Baucom ES	Baucom ES	E51 ES			
E44	Hilltop Needmore ES					E44 ES		
E52	Rex Road ES					E52 ES		
E49	Bowling Road ES					E49 ES		
H12	Felton Grove HS					H12 HS Lrg		
E53	Pleasant Plains ES					E53 ES		
M19/H11	Parkside MS/ Wake EC of Infor. & Biotech.					M19/H11 Sm		
H14	Morrisville Area HS (unnamed)							H14 HS Sm
	Swing Space: A new school serves as a swing space for an existing school's renovation before opening with its own population.							

This seven-year plan is designed with flexibility, so that it may be reviewed annually by WCPSS staff and Wake County Planners.

**Note: Market volatility has the potential to impact scheduled project completion dates.*

Current CIP: Seven-year Plan for Future School Openings*





Review of Recommended Stability Rules for 2023-24

Stability Rules: Recommendation

- All existing students impacted by assignment changes are eligible to remain assigned to their current school with transfer status (no transportation) through the terminal grade of the school.
- Rising Kindergarten/6th/9th siblings of existing students eligible to join their sibling with transfer status (no transportation) through the terminal grade of the school.

Families potentially impacted by the recommendations included in this draft will be contacted this week with information regarding the process and timeline for requesting stability transfers for existing students and for rising kindergarten, 6th and 9th grade siblings of existing students.



Revisions to Draft 1 Enrollment Plan Recommendations



Revisions to Base Assignment Changes

Base School Impacts (2023-24) – Elementary School

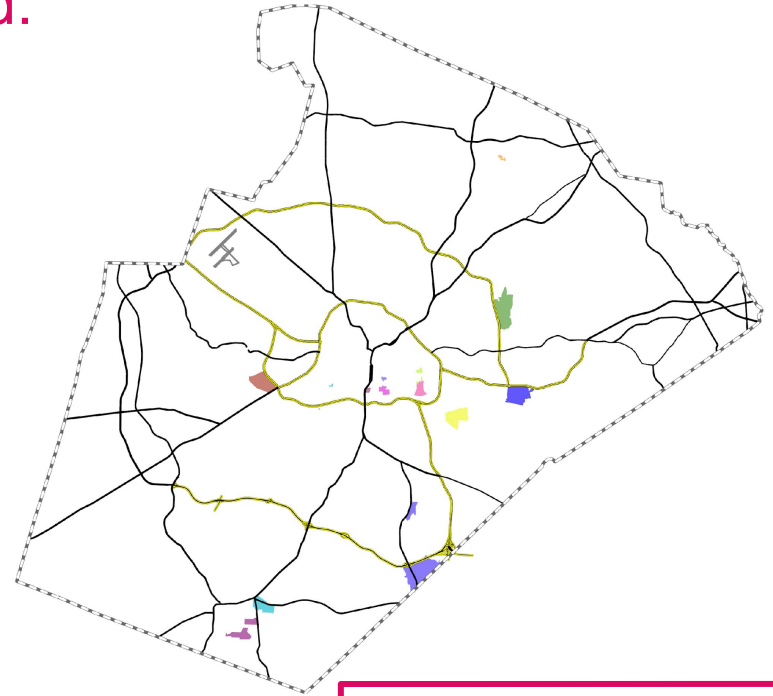
Base Attendance Areas Impacted:

Sending Schools:

Barwell Road
Beaverdam
Bryan Road
Combs
Dillard Drive
Farmington Woods
Heritage
Hodge Road
Laurel Park
North Ridge
Oak Grove
Olds
South Lakes
Swift Creek

Receiving Schools:

Adams
Aversboro
Bugg
Dillard Drive
Forestville Road
Fuller
Fuquay-Varina
Hunter
Knightdale
Swift Creek
Wake Forest
Walnut Creek
Washington
Wiley
Willow Springs



Technical Correction - Map

Base School Impacts (2023-24) – Middle School

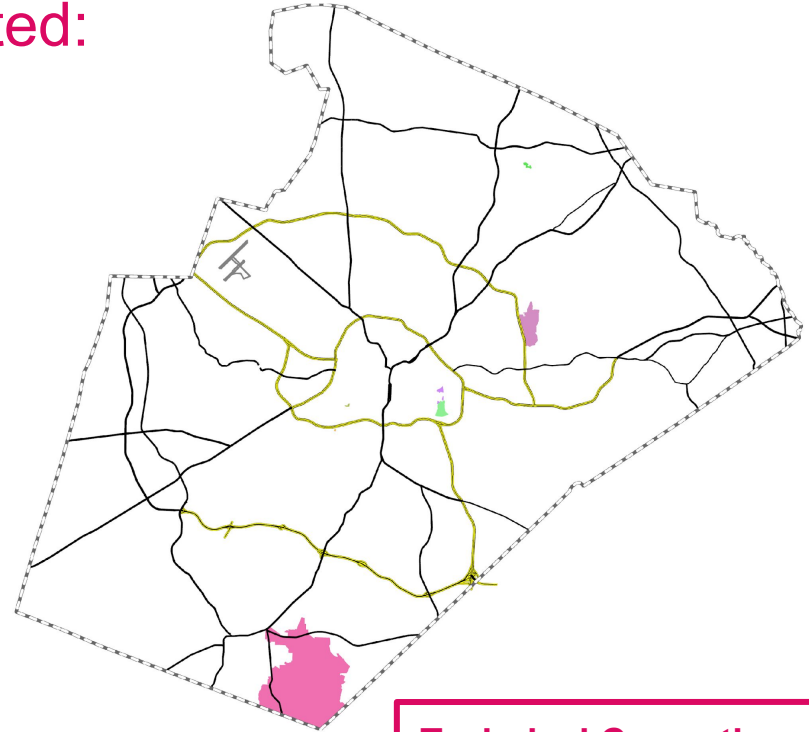
Base Attendance Areas Impacted:

Sending Schools:

- Centennial
- Dillard Drive
- Fuquay-Varina
- Heritage
- River Bend
- West Millbrook

Receiving Schools:

- Centennial
- Dillard Drive
- Herbert Akins Road
- Ligon
- Neuse River
- Oberlin
- Wake Forest



Technical Correction - Map

Base School Impacts (2023-24) – High School

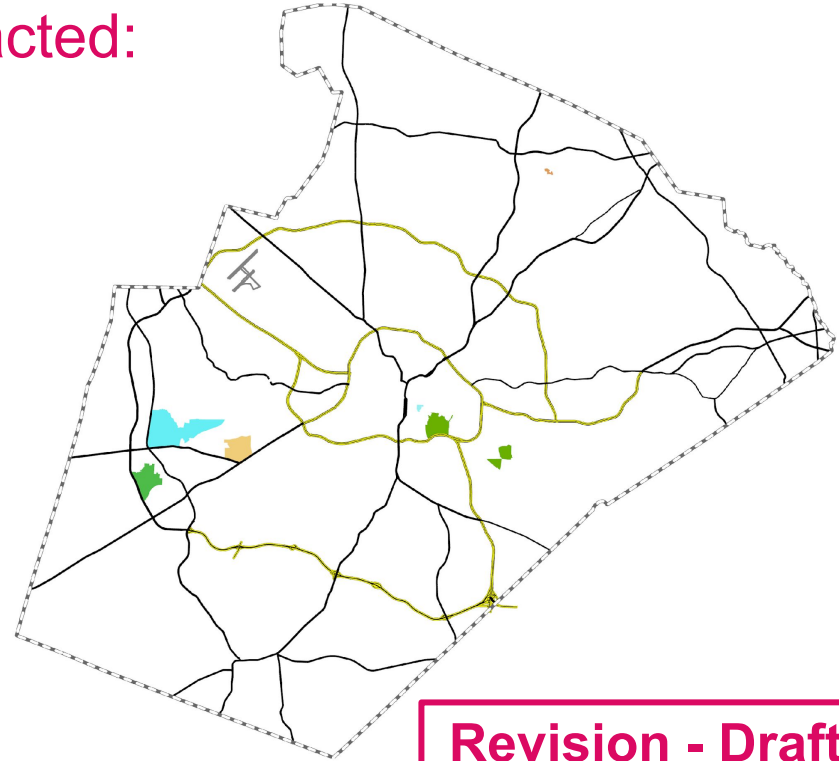
Base Attendance Areas Impacted:

Sending Schools:

- Apex
- Apex Friendship
- Broughton
- Enloe
- Garner
- Heritage
- Sanderson
- South Garner

Receiving Schools:

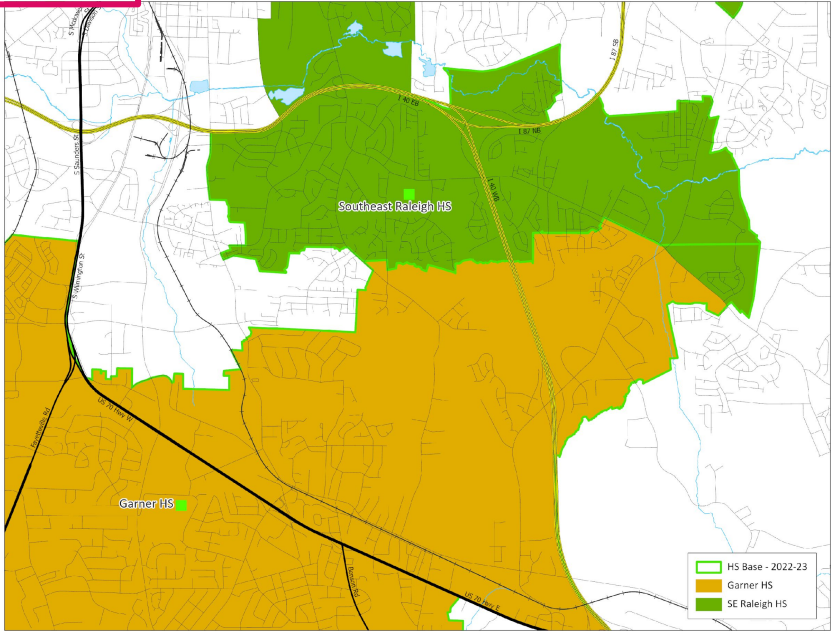
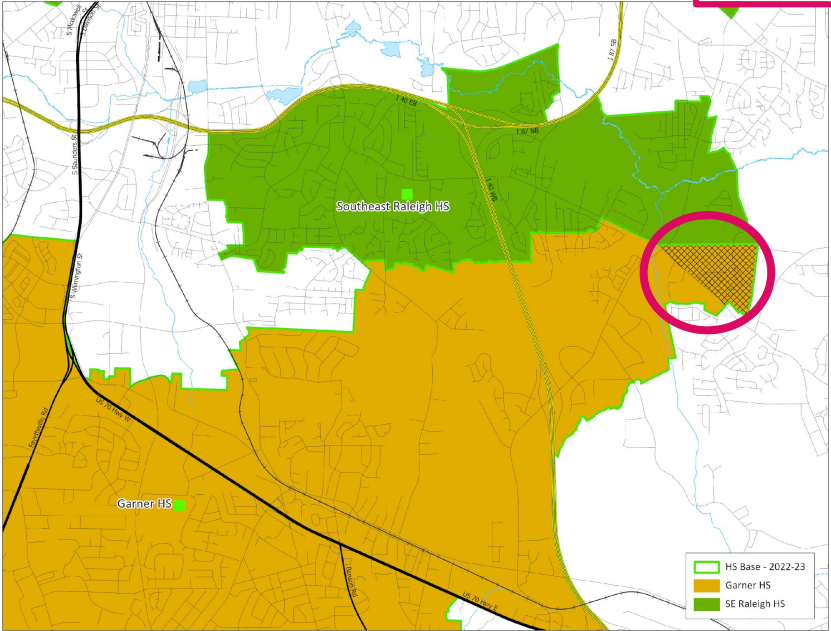
- Apex
- Broughton
- Cary
- Green Hope
- Southeast Raleigh
- Wake Forest



Revision - Draft #2

Existing Schools – Southeast Raleigh HS (from Garner HS)

DRAFT #1

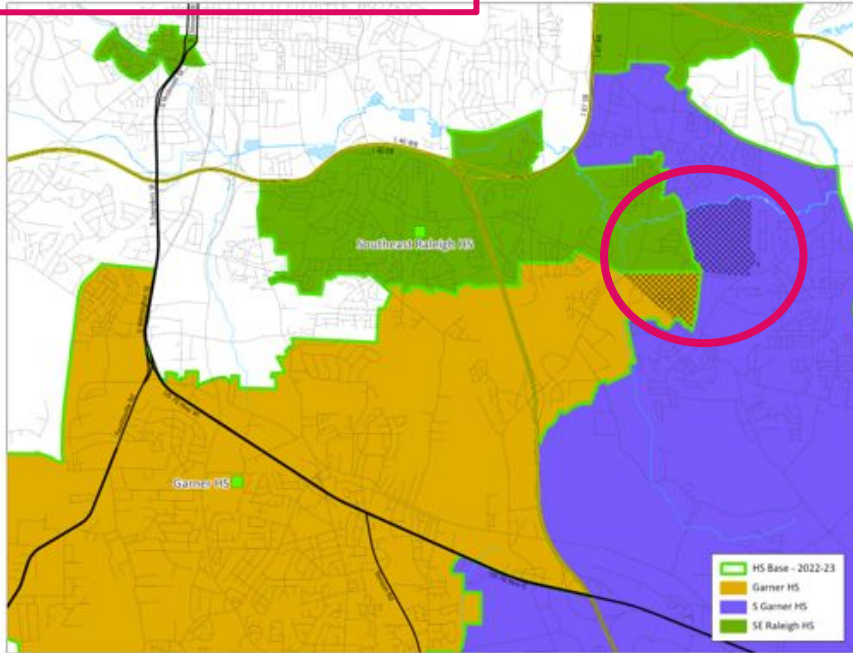


Impacted Areas: 

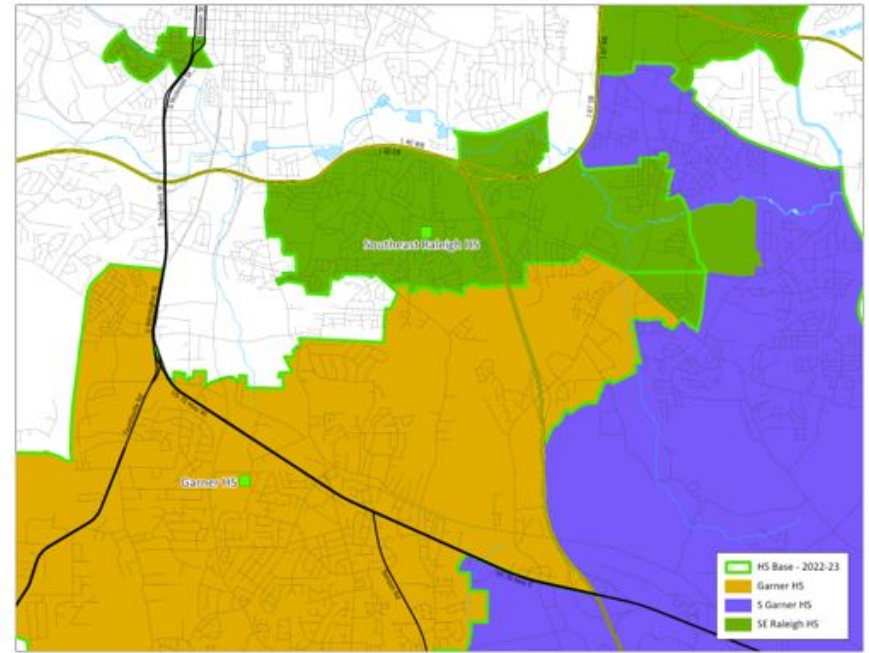
Proposed Base Areas

Existing Schools – Southeast Raleigh HS (from Garner & South Garner HS)

Revision - Draft #2



Impacted Areas:



Proposed Base Areas

Existing Schools – Southeast Raleigh HS (from Garner & South Garner HS)

Revision - Draft #2

2022-23 Base School	Calendar	Capacity w/ Trailers	2023-24 Util w/ Trl	2025-26 Util w/ Trl
Garner HS	T	2240	78%	74%
South Garner HS	T	2203	85%	82%
Southeast Raleigh HS	M	1967	79%	76%

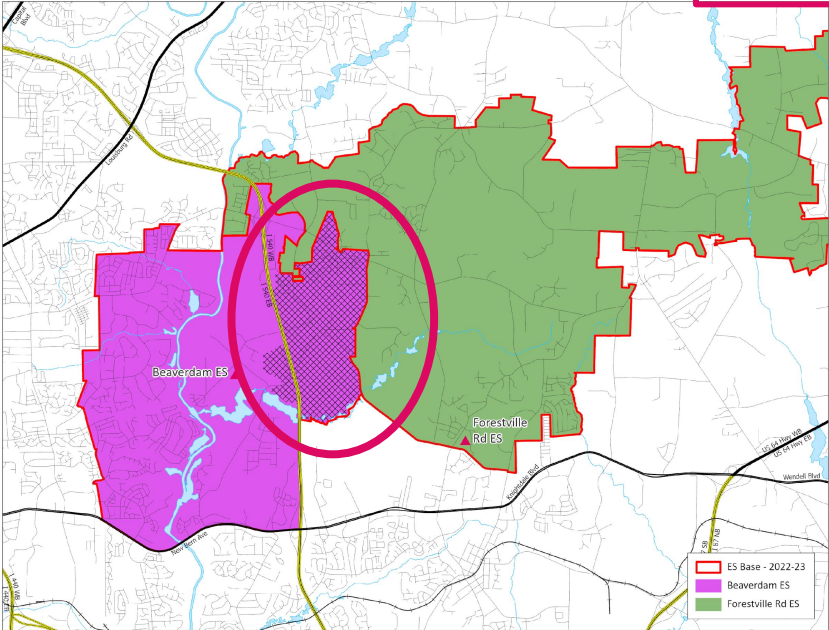
Proposed 2023-24 Base School	Calendar	Capacity w/ Trailers	2023-24 Util w/ Trl	2025-26 Util w/ Trl
Garner HS	T	2240	78%	73%
South Garner HS	T	2203	85%	82%
Southeast Raleigh HS	M	1967	84%	81%

- M-T – Multi-Track Year-Round Calendar
- S-T – Single Track Year-Round Calendar
- T – Traditional Calendar
- Base % = Percentage of WCPSS students within base attending the base school
- Util = Utilization based on 2022-23 capacity, updated May 2022
- Util w/ Trl = Utilization with Trailers

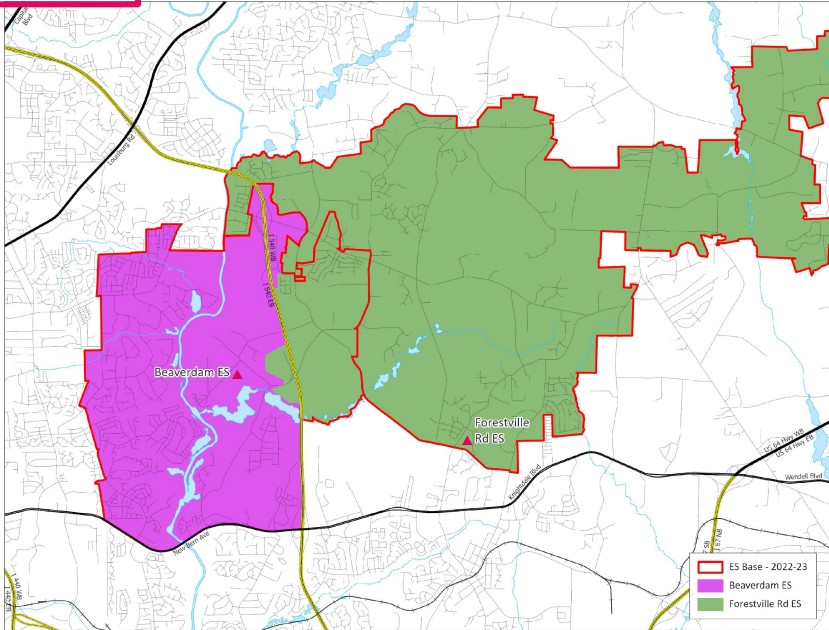
NOTE: Southeast Raleigh HS is impacted by other assignment adjustments

Existing Schools – Forestville Road ES (from Beaverdam ES)

DRAFT #1



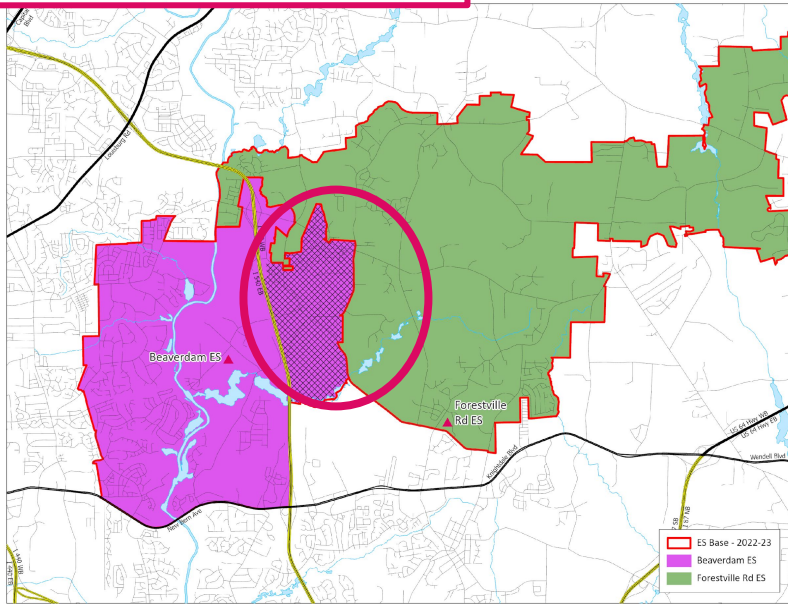
Impacted Areas:



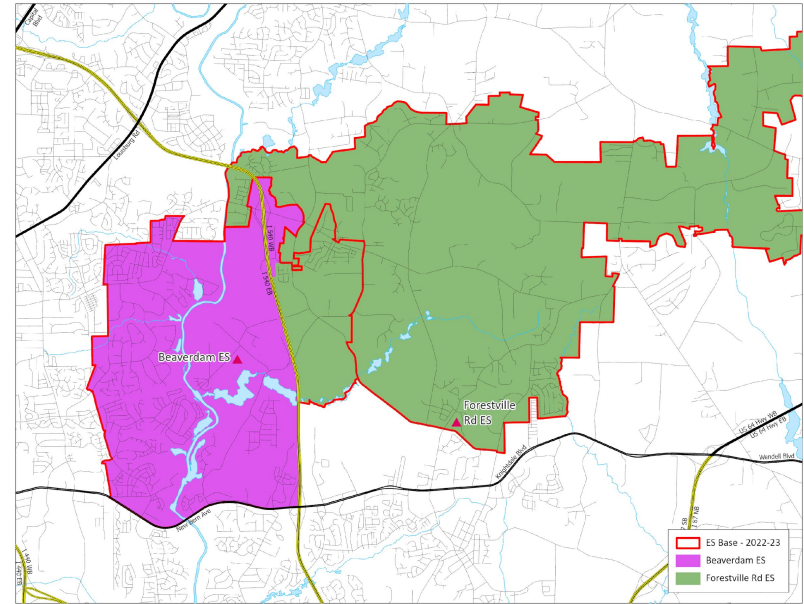
Proposed Base Areas

Existing Schools – Forestville Road ES (from Beaverdam ES)

Revision - Draft #2



Impacted Areas:



Proposed Base Areas

Existing Schools – Forestville Road ES (from Beaverdam ES)

Draft #2 (no changes from Draft #1)

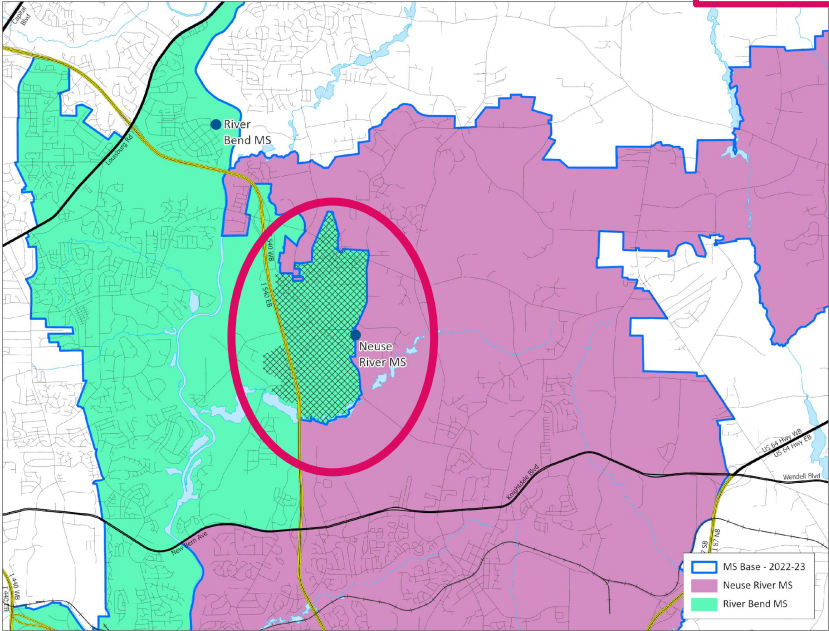
2022-23 Base School	Calendar	Capacity w/ Trailers	2023-24 Util w/ Trl	2025-26 Util w/ Trl
Beaverdam ES	T	696	105%	114%
Forestville Rd ES	T	628	80%	90%

Proposed 2023-24 Base School	Calendar	Capacity w/ Trailers	2023-24 Util w/ Trl	2025-26 Util w/ Trl
Beaverdam ES	T	696	96%	105%
Forestville Rd ES	T	628	90%	100%

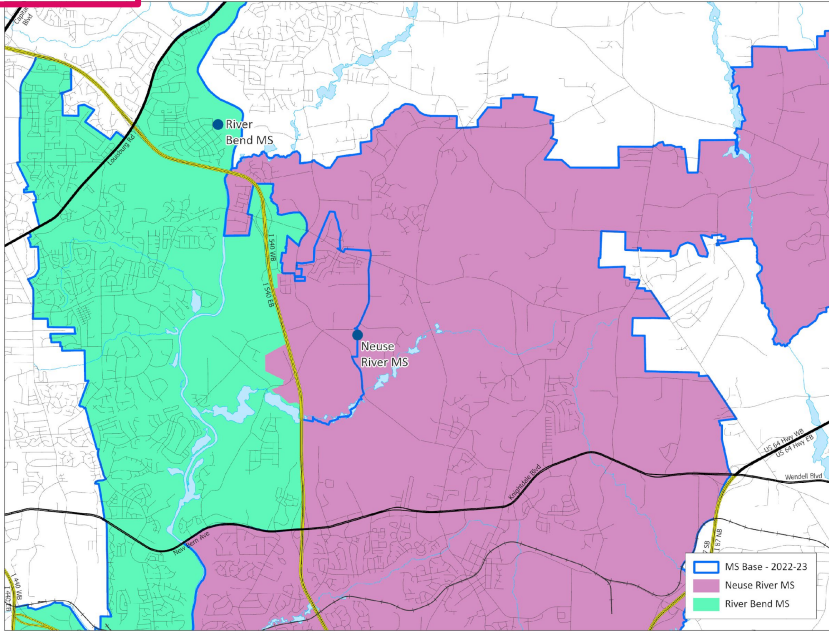
- M-T – Multi-Track Year-Round Calendar
- S-T – Single Track Year-Round Calendar
- T – Traditional Calendar
- Base % = Percentage of WCPSS students within base attending the base school
- Util = Utilization based on 2022-23 capacity, updated May 2022
- Util w/ Trl = Utilization with Trailers

Existing Schools – Neuse River MS (from River Bend MS)

DRAFT #1



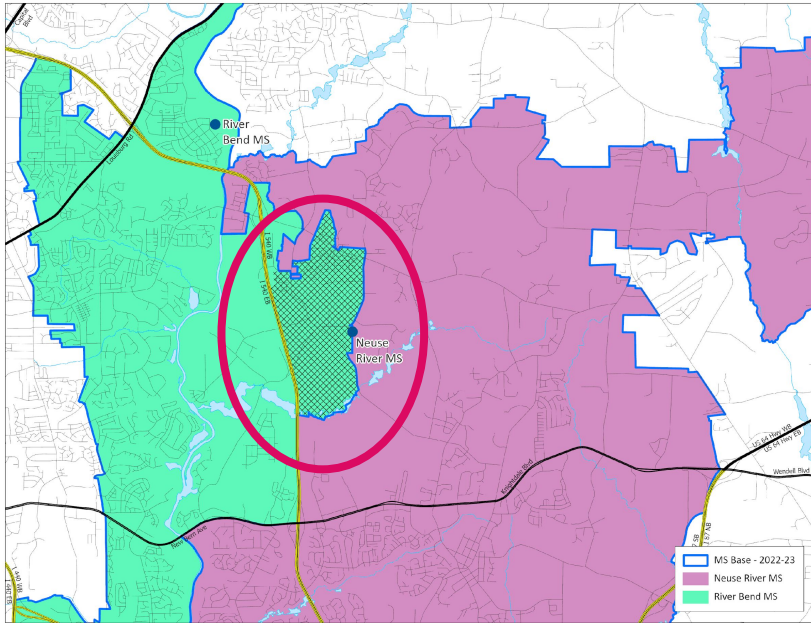
Impacted Areas:



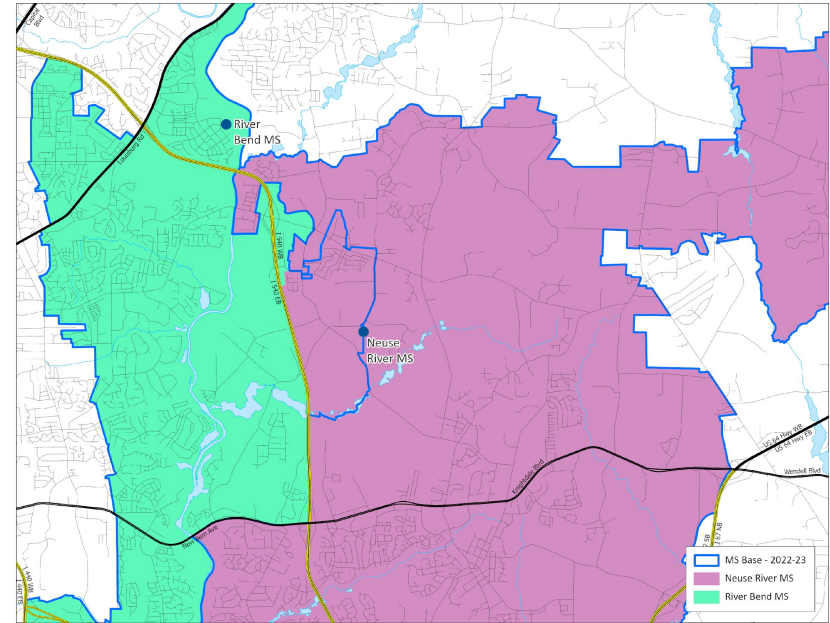
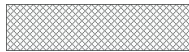
Proposed Base Areas

Existing Schools – Neuse River MS (from River Bend MS)

Revision - Draft #2



Impacted Areas:



Proposed Base Areas

Existing Schools – Neuse River MS (from River Bend MS)

Draft #2 (no changes from Draft #1)

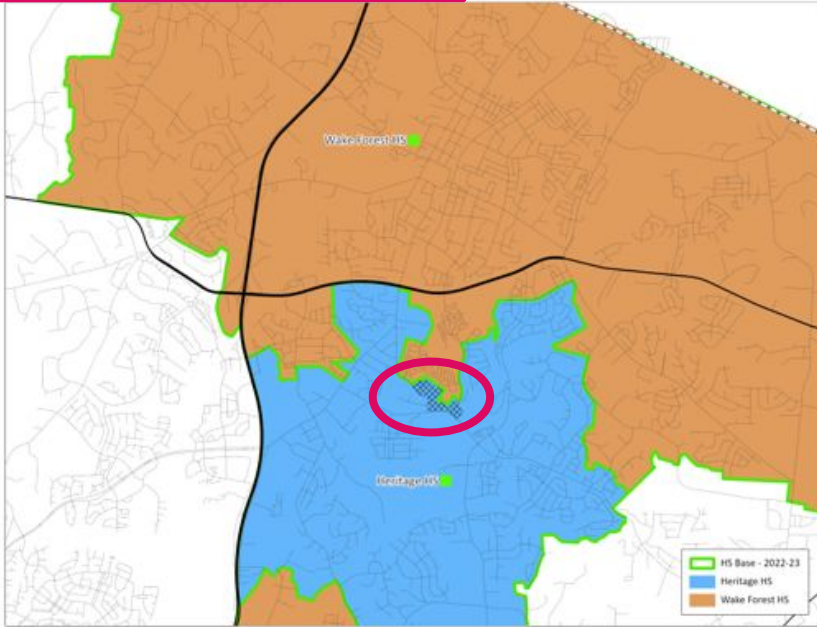
2022-23 Base School	Calendar	Capacity w/ Trailers	2023-24 Util w/ Trl	2025-26 Util w/ Trl
Neuse River MS	M	1248	77%	76%
River Bend MS	T	1248	95%	91%

Proposed 2023-24 Base School	Calendar	Capacity w/ Trailers	2023-24 Util w/ Trl	2025-26 Util w/ Trl
Neuse River MS	M	1248	80%	80%
River Bend MS	T	1248	92%	88%

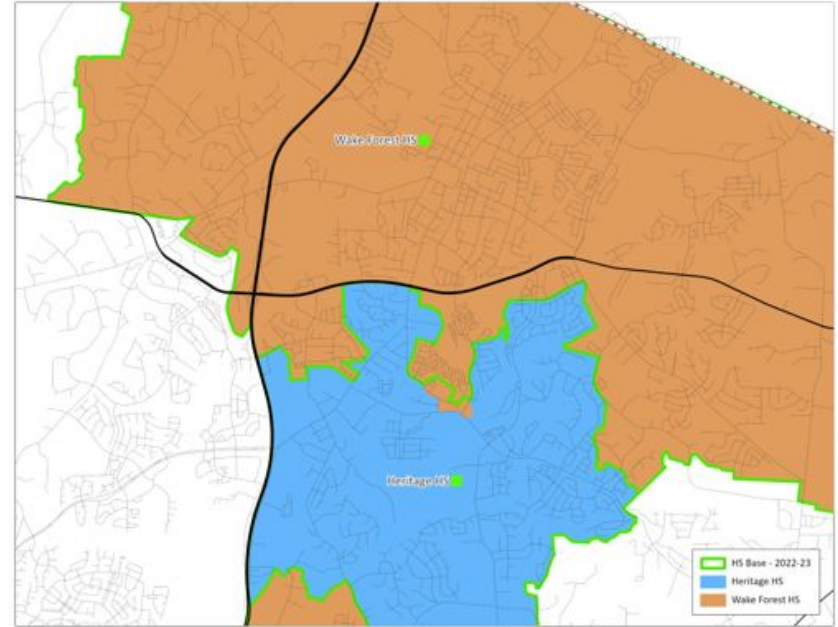
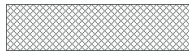
- M-T – Multi-Track Year-Round Calendar
- S-T – Single Track Year-Round Calendar
- T – Traditional Calendar
- Base % = Percentage of WCPSS students within base attending the base school
- Util = Utilization based on 2022-23 capacity, updated May 2022
- Util w/ Trl = Utilization with Trailers

Existing Schools – Wake Forest HS (from Heritage HS)

Addition - Draft #2



Impacted Areas:



Proposed Base Areas

Existing Schools – Wake Forest HS (from Heritage HS)

Addition - Draft #2

2022-23 Base School	Calendar	Capacity w/ Trailers	2023-24 Util w/ Trl	2025-26 Util w/ Trl
Heritage HS	T	1714	112%	102%
Wake Forest HS	T	2172	100%	101%

Proposed 2023-24 Base School	Calendar	Capacity w/ Trailers	2023-24 Util w/ Trl	2025-26 Util w/ Trl
Heritage HS	T	1714	112%	101%
Wake Forest HS	T	2172	100%	101%

- M-T – Multi-Track Year-Round Calendar
- S-T – Single Track Year-Round Calendar
- T – Traditional Calendar
- Base % = Percentage of WCPSS students within base attending the base school
- Util = Utilization based on 2022-23 capacity, updated May 2022
- Util w/ Trl = Utilization with Trailers



Timeline / Next Steps

Timeline: 2023-2024 Enrollment Plan

- **May 3 – Initial Planning Discussion [BoE Work Session]**
 - *May-June – Staff Hosts ThoughtExchange and Focus Groups*
 - *Community Stakeholders & District Leadership*
 - *May-September – Staff Develops Draft 1*
- **September 20 – Presentation of Draft 1 [BoE Work Session]**
 - *September-October – Staff Hosts Public Engagement Activities*
 - *October – Staff Refines Original Draft*
- **October 18 – Presentation of Draft 2 [BoE Work Session]**
 - *October-November - Staff Hosts Public Engagement Activities*
 - *November - Staff Prepares Final Draft*
- **November 10 – Public Hearing for BoE**
- **November 16 – Presentation of Final Draft for Review & Approval [BoE Work Session & Meeting]**

Public Engagement Progress: Next Steps

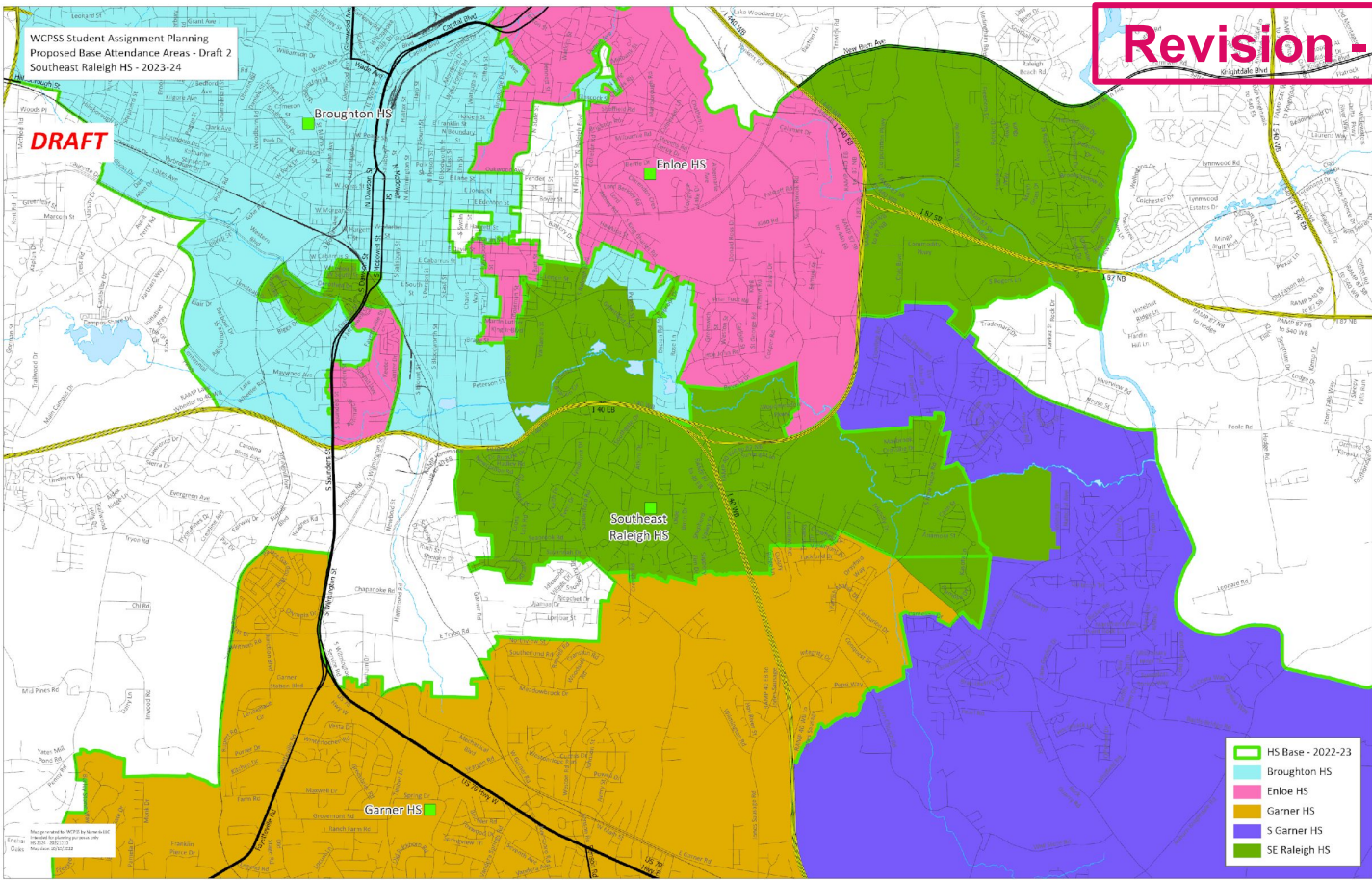
Draft #2 Public Engagement Activities

- October 18:
 - District website is updated with Draft 2 information (wcpss.net/2023enrollmentproposal)
- October 18 - November 4:
 - Open New ThoughtExchange: “What are your thoughts or questions about the updates included in Draft 2?” (wcpss.net/draft2feedback)
- October 26:
 - Host Draft #2 Public Information Session (6:00-7:30 pm)
- November 10:
 - Special Called Board of Education Meeting - Public Hearing on Student Assignment Plan



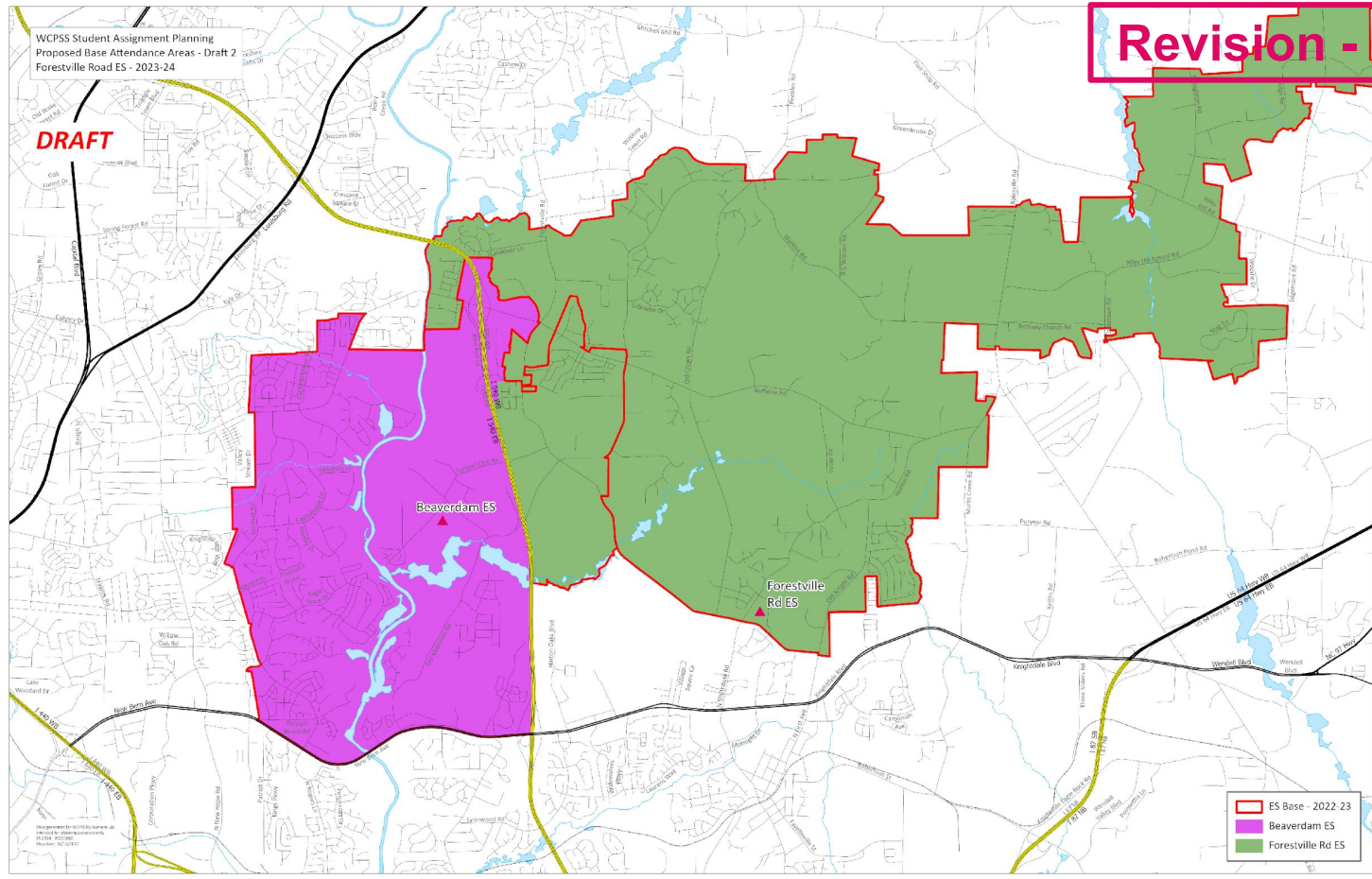
Addendum

Updated Detail Maps, Prior Presentations

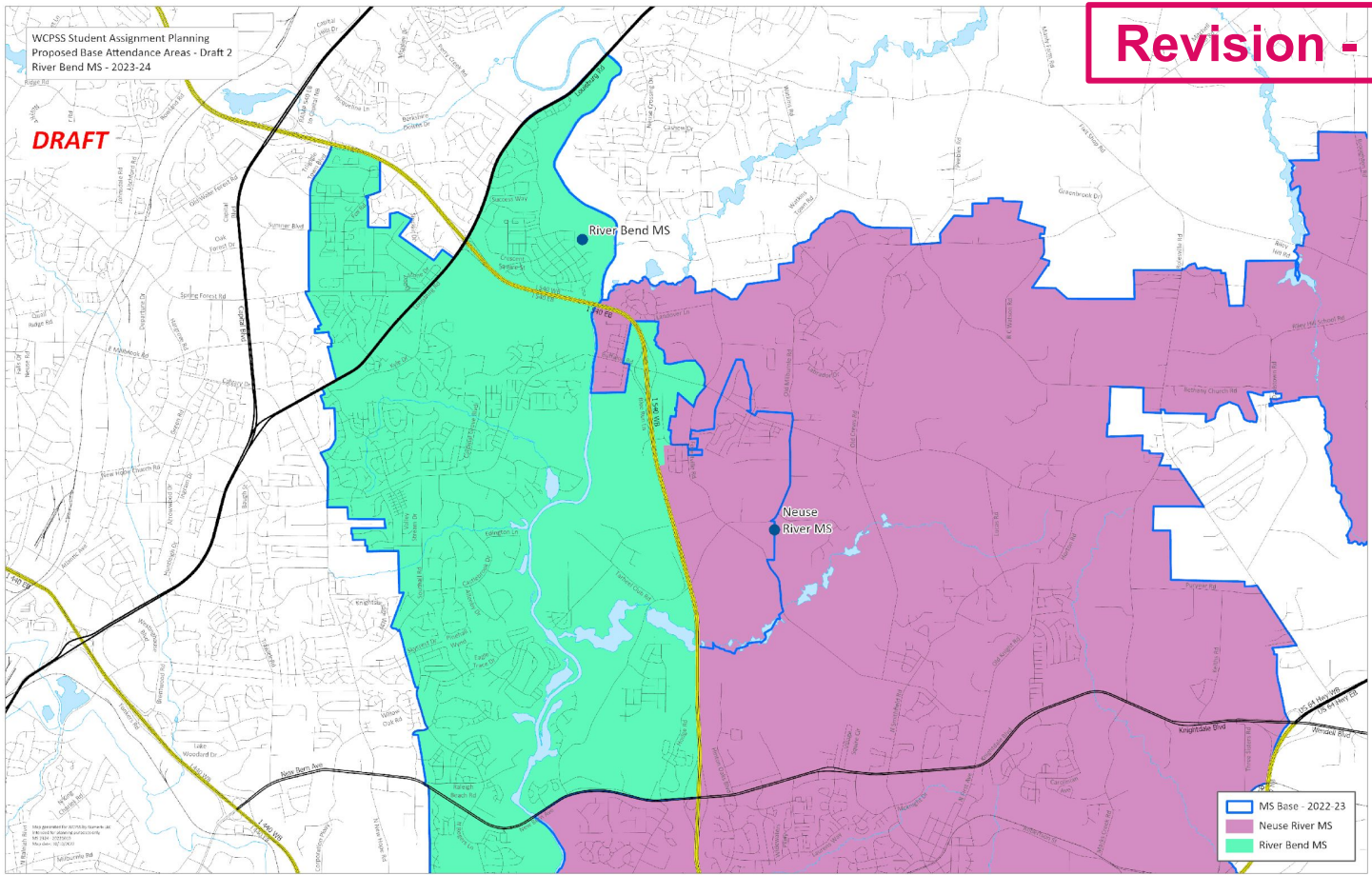


WCPSS Student Assignment Planning
Proposed Base Attendance Areas - Draft 2
Forestville Road ES - 2023-24

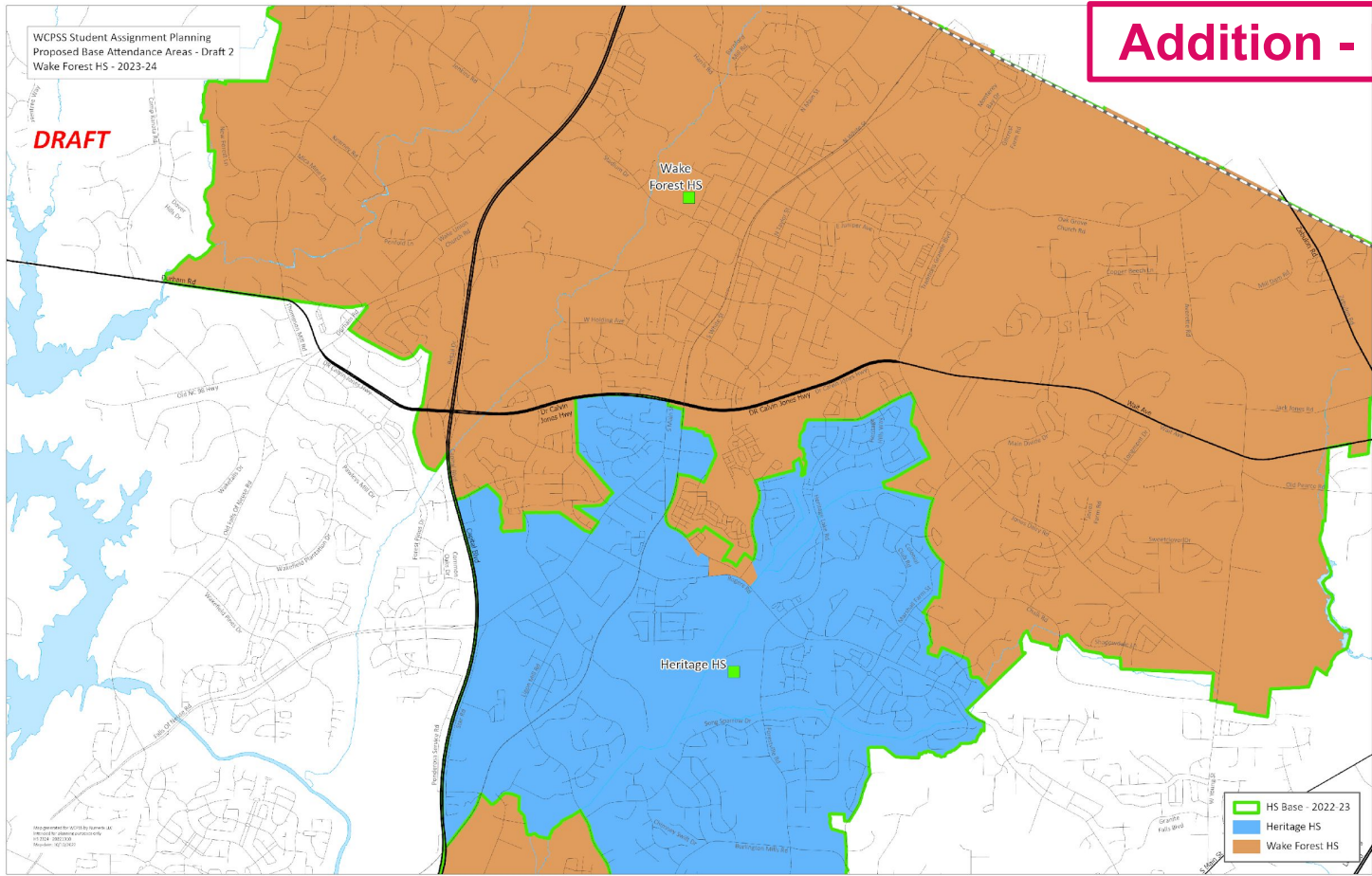
DRAFT



DRAFT

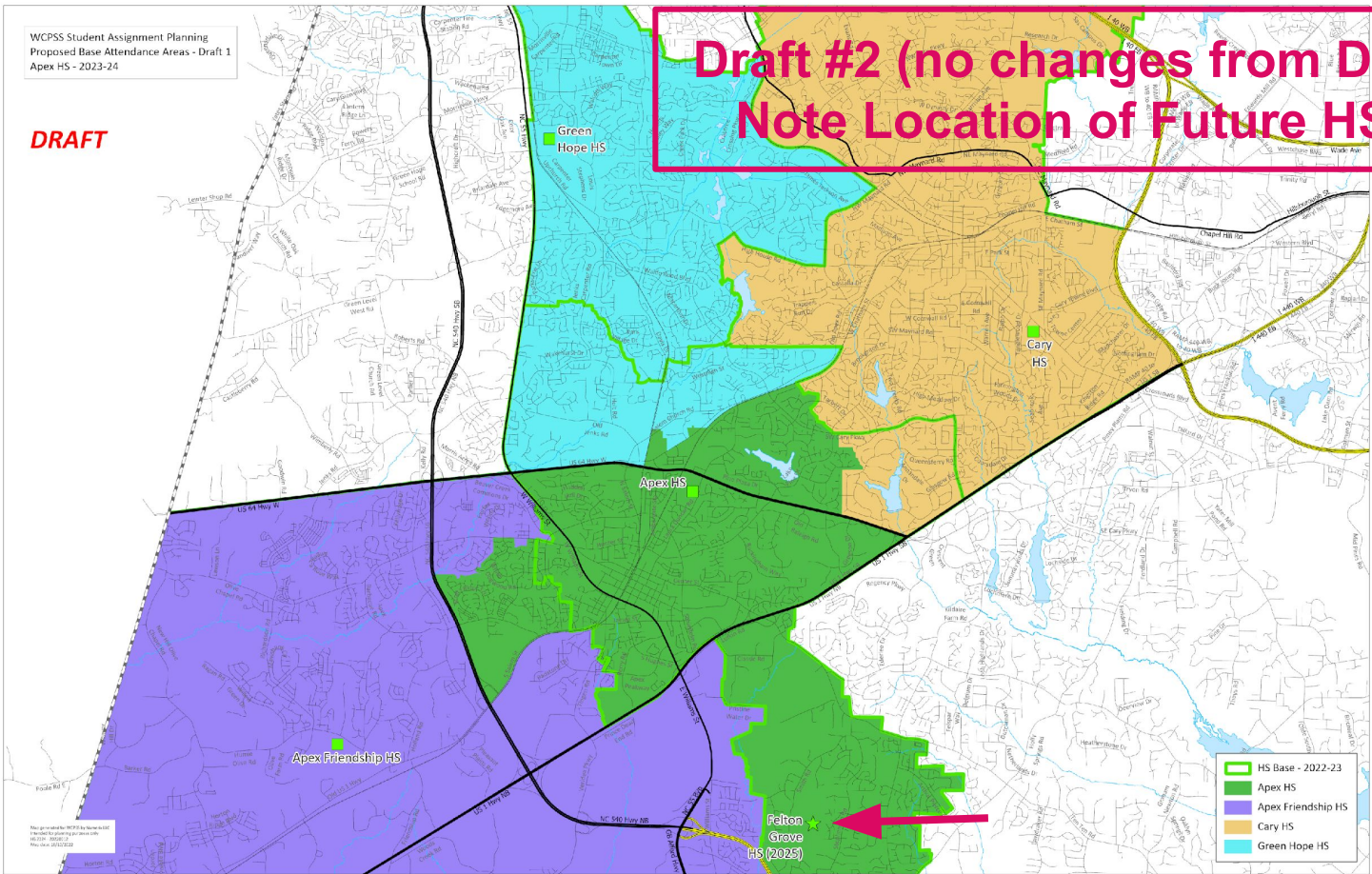


DRAFT



DRAFT

**Draft #2 (no changes from Draft #1)
Note Location of Future HS Site**



Map generated by WCPSS on 10/23/2023
10/23/2023 10:23:23 AM
www.wcpss.net

Prior Presentations

Items Included in the Agenda Attachments for the Work Session:

- Draft #1: WCPSS 2023-24 Enrollment Plan (pdf file)
 - Original presentation as shared during the Board Work Session on September 20, 2022, with technical corrections included

Note: Board Policy 4150, Base Population Report and School Population Report previously posted with September 20, 2022 Board materials