



Wake County

Transportation Center Project Update

Douglas Congdon, Program Executive – FD&C

Elizabeth Sharpe, Director – FD&C

Shane Webster, Senior Facility Planner – FD&C

November 9, 2022

Middle Creek Transportation Center – Site Plan

LEGEND	
A	MAINTENANCE BUILDING (<u>22 SERVICE BAYS</u>)
B	FUEL STORAGE TANKS • <u>DIESEL: 3 - 12,000 & 1 - 8,000 GALLON</u> • <u>GASOLINE: 1 – 4,000 GALLON</u>
C	DOUBLE- SIDED TOP-LOADING FUELING STATION
D	CTE CLASSROOM AND SHOP BAYS
E	<u>BUS PARKING = 250 BUSES (6 DISTRICTS)</u>
F	PARKING (STAFF, CTE, DRIVERS)
G	OPERATIONS & ADMINISTRATION BUILDING (19,997 sf)
H	SINGLE BAY UNDER CARRIAGE WASH
I	BUS WASH BUILDING



Piney Plains Transportation Center – Site Plan

LEGEND

A	NEW MAINTENANCE WING - 16 SERVICE BAYS
B	ABOVE GRADE FUEL STORAGE TANKS - DIESEL: 1 - 3,000 GALLON - GASOLINE: 1- 5,000 GALLON
C	DOUBLE- SIDED REFUELING STATION
D	CTE CLASSROOM AND MAINTENANCE BAYS
E	BUS PARKING: -PRE-NCDOT RAMP: 135 BUSES (2.5 DISTRICTS) - POST NCDOT RAMP: 61 BUSES (1.5 DISTRICTS)
F	PARKING (STAFF, CTE, DRIVERS)
G	ALARM MONITORING CENTER



Piney Plains Transportation Center – NCDOT / Town of Cary Impacts

- Proposed Bus Parking: 135 Buses (2 Districts)
- Bus Parking Post Ramp: 61 Buses (1.5 Districts)
- 100 Ft. NCDOT Right of Way
- 50 Ft. Town of Cary Buffer
- Relocation of main Bus Driveway further away from intersection at Ramp.
- Piney Plains Road Widening and Streetscape Improvements, and 80 ft. RW
- TAR required for Site Plan Approval and Rezoning.



Piney Plains Transportation Center

EXISTING BUILDING

AERIAL VIEW OF EXISTING FACILITY



Piney Plains Transportation Center - Floor Plan

New Maintenance Wing

BUILDING FLOOR PLAN LEGEND

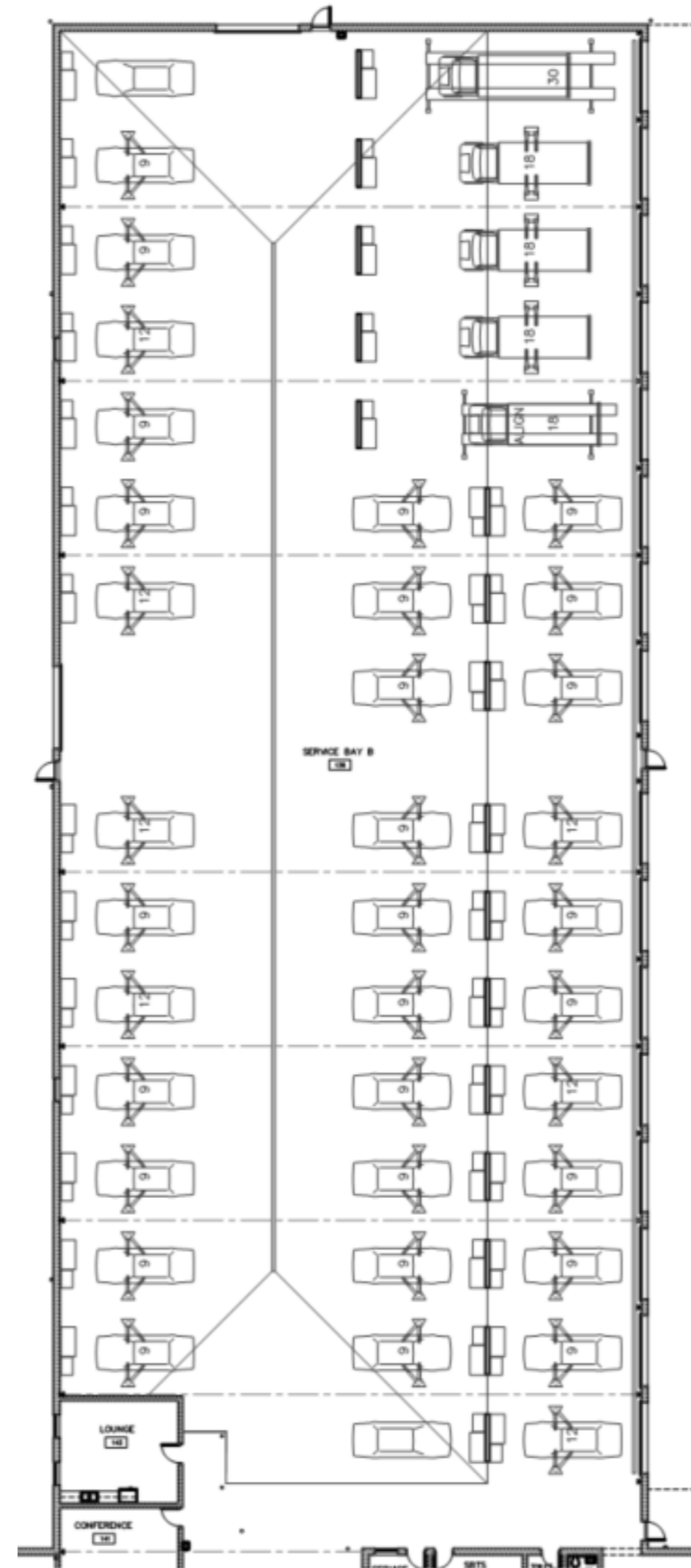
- CTE
- MAINTENANCE AREAS / 16 SERVICE BAYS
- TOOL STORAGE
- OPERATIONS / ADMINISTRATION
- OPERATIONS (DRIVERS'S AREA / GENERAL STORAGE
- ALARM MONITORING CENTER (AMC)



Piney Plains Transportation Center – Bus Repair Wing Replacement

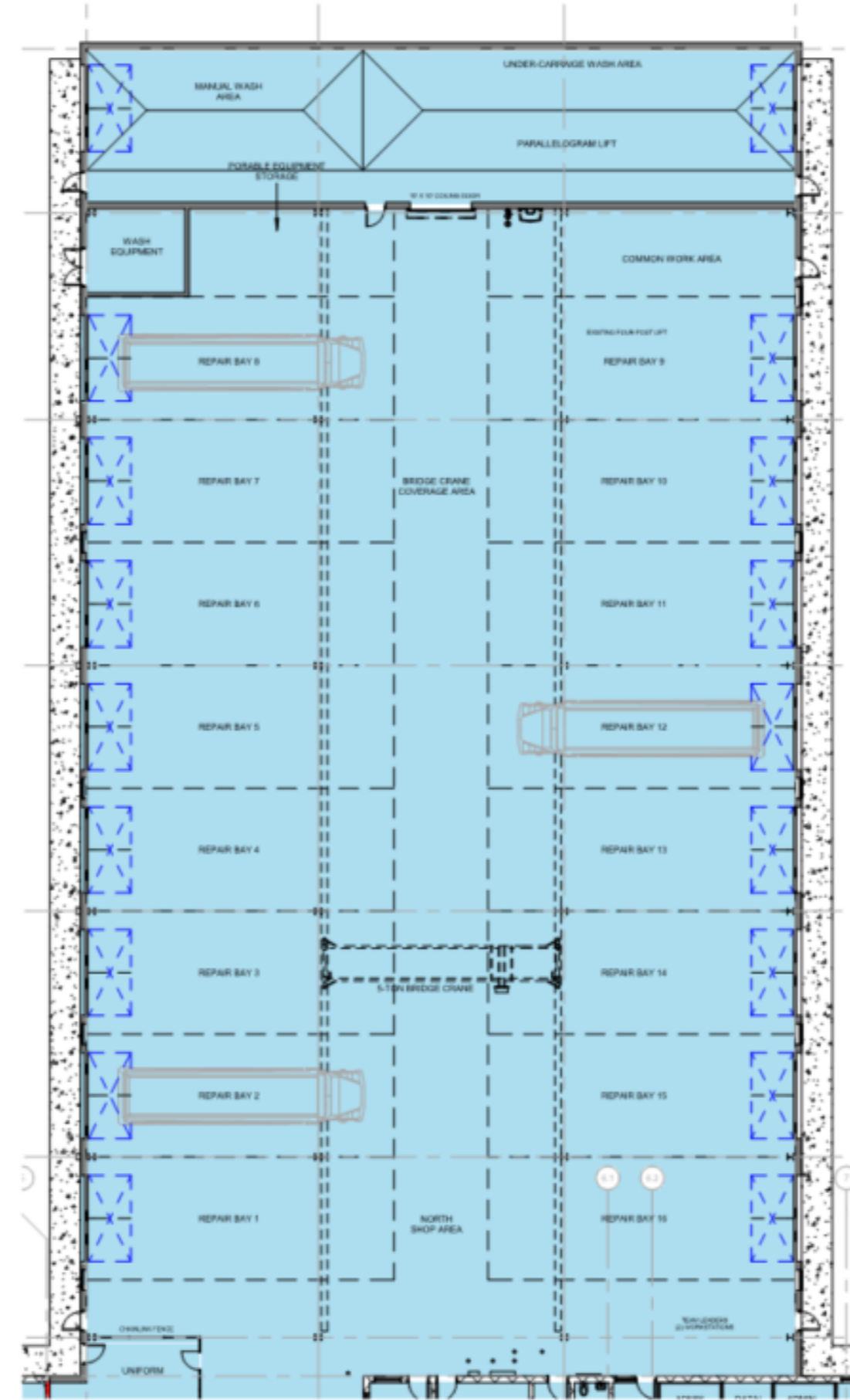
Original Maintenance Wing

- 8 -10 Workable Bus Service Bays
- Inefficient Use Of Space
- No Under Carriage Wash Bay
- No Bus Lift Capability – Low Structure
- Requires Both Service Wings To Achieve Minimum Number Of Service Bays
- Takes UP Space Required For Other Program Needs.
- Existing Overhead Doors Would Need To Be Replaced and Masonry Wall Openings Enlarged.
- More Difficult to Maneuver Buses Around Building.



New Maintenance Wing

- 16 Right Sized Service Bays
- Appropriate Height For Lift Service.
- Bridge Crane Serving 16 Bays.
- Under Carriage Wash
- Common Work and Tool Areas
- Working Clearances meet DPI Standards
- Proper Height, Insulated Overhead Doors.
- Improved Bus Maneuvering & Site Access
- Supported By Current Budget
- No Net Increase In Impervious Area

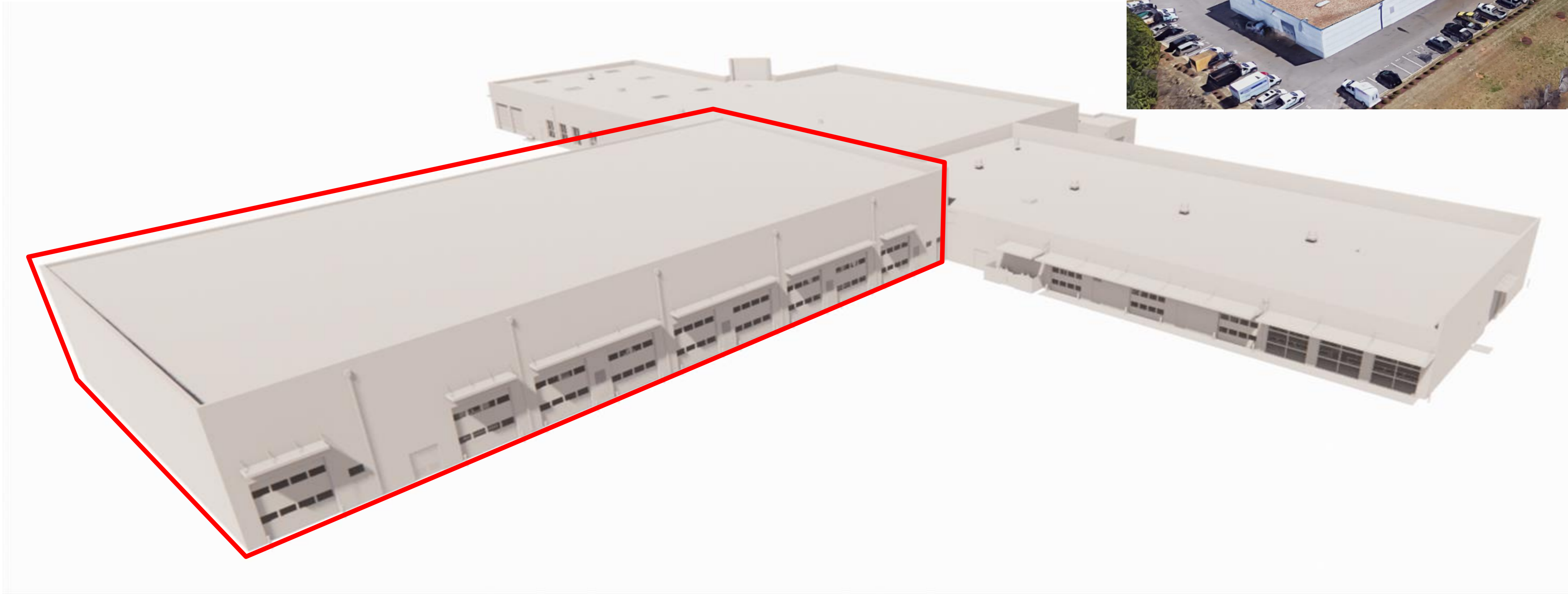


Piney Plains Transportation Center – Bus Repair Wing Replacement

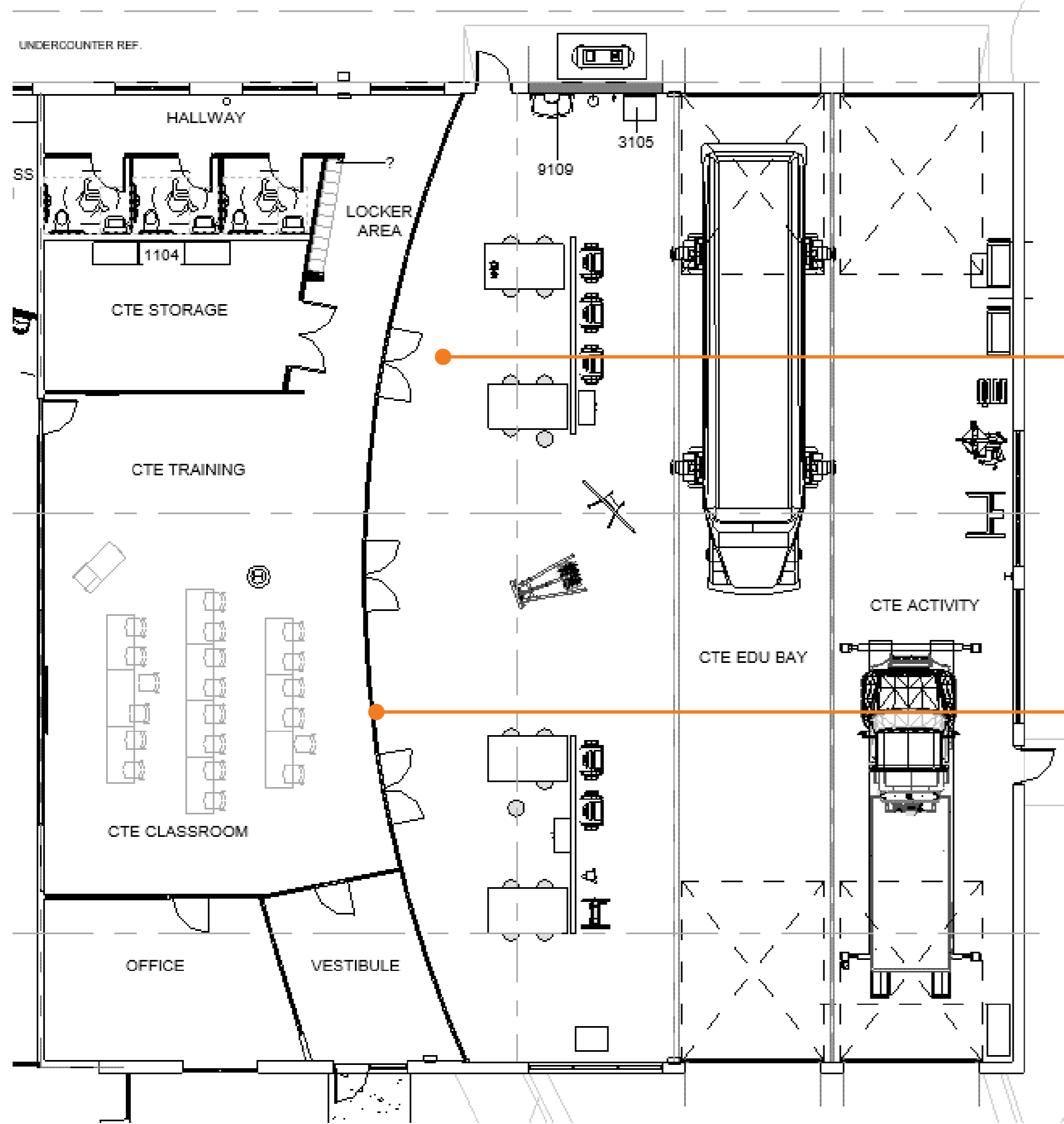
3D RENDERING

NEW NORTH BAY SERVICE WING

EXISTING MAINTENANCE
BAY WING TO BE
DEMOLISHED.



Piney Plains Transportation Center - CTE Classrooms & Service Bay



Piney Plains Transportation - CTE Concept Images

3D RENDERING

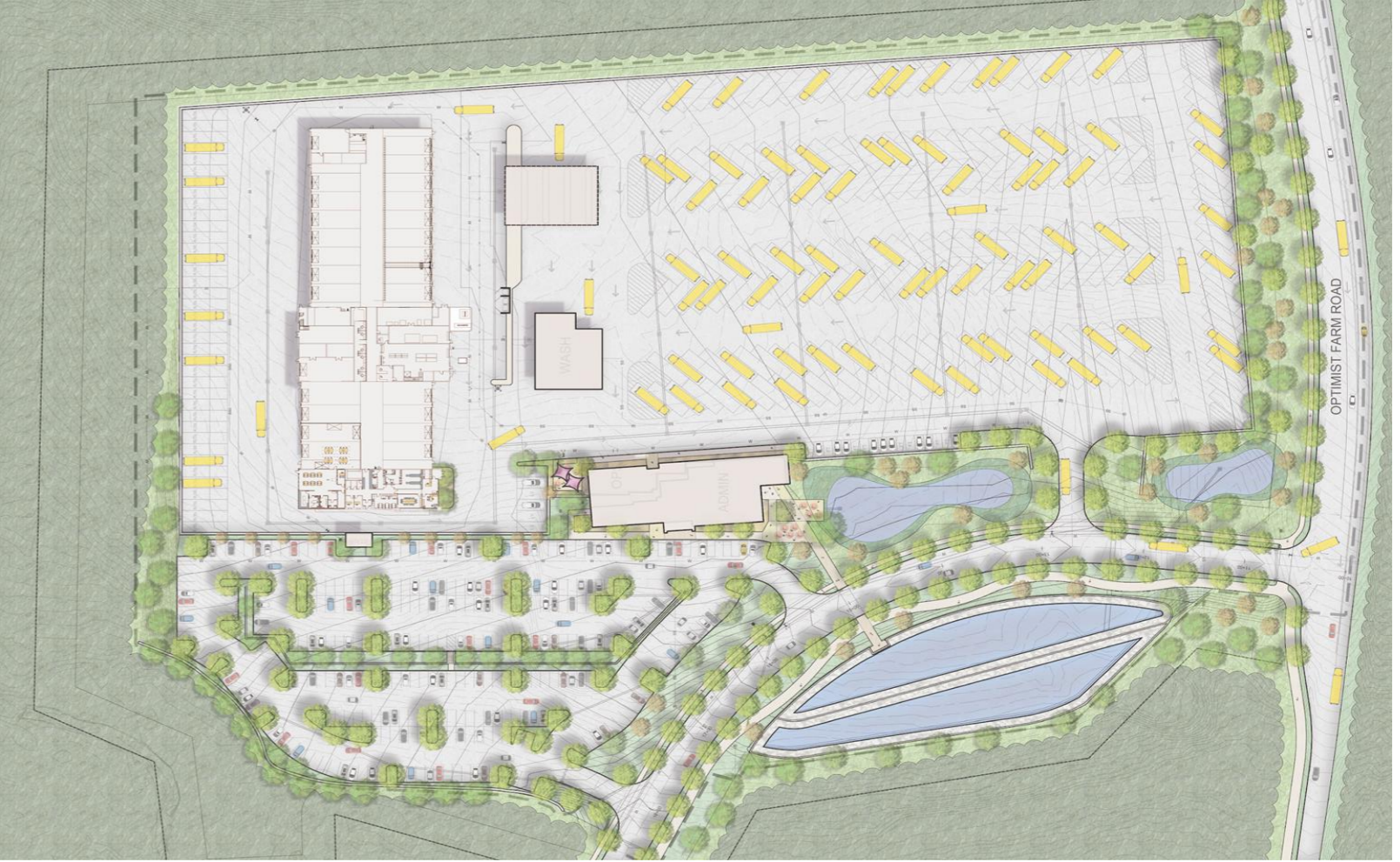
INTERIOR CTE CLASSROOM & SERVICE BAY AREA



Middle Creek & Piney Plains Transportation Program Comparison

Summary

	MIDDLE CREEK	PINEY PLAINS
	CCAP = \$29,169,481 (9/6/2019)	CCAP = \$21,196,093 (3/1/2022)
	Site Acreage - 21.58	Site Acreage - 28.93
Administration and Operations	19,997 sf	11,410
Maintenance Service Bays	22	16
Undercarraige Wash Bay	1	1
Wash Building	1	0
CTE Diesel Mechanics Program:		
Classrooms	1	1
Teaching Bays	2	4
Bus Parking Spaces:	250 / 6 Districts	135 / 2.5 Districts
Post NCDOT Off Ramp		61 / 1.5 Districts
Alarm Monitoring Center	NA	2,700 sf
Staff / CTE / Bus Driver Parking	88,704 sf	109,412 sf
Top Loading Fueling Station	1 - Double Sided	1 - Double Sided
Diesel	3-12,000 & 1-3,000 gal.	1-3,000 gallon
Gasoline	1-4,000 gallon	1-5,000 gallon



Thank You!

QUESTIONS?