

Area Crowding Considerations - 101

November 9, 2022

Marcella S. Rorie, Senior Director Long Range Planning
Susan Pullium, Senior Director Office of Student Assignment

Area Crowding Considerations

Ongoing residential growth outpaces school capacities in some areas of Wake County and challenges teaching and learning.

- School crowding impacts
- Crowding management tools
- School crowding thresholds



School Crowding Impacts

Crowding Impacts

- Inequitable learning environment experiences
- Excedence of legislative class size limits/District average
- Core space impacts
- Transportation inefficiencies
- Building overutilization and operational inefficiencies
- Limits family choice opportunities



Crowding Management Tools

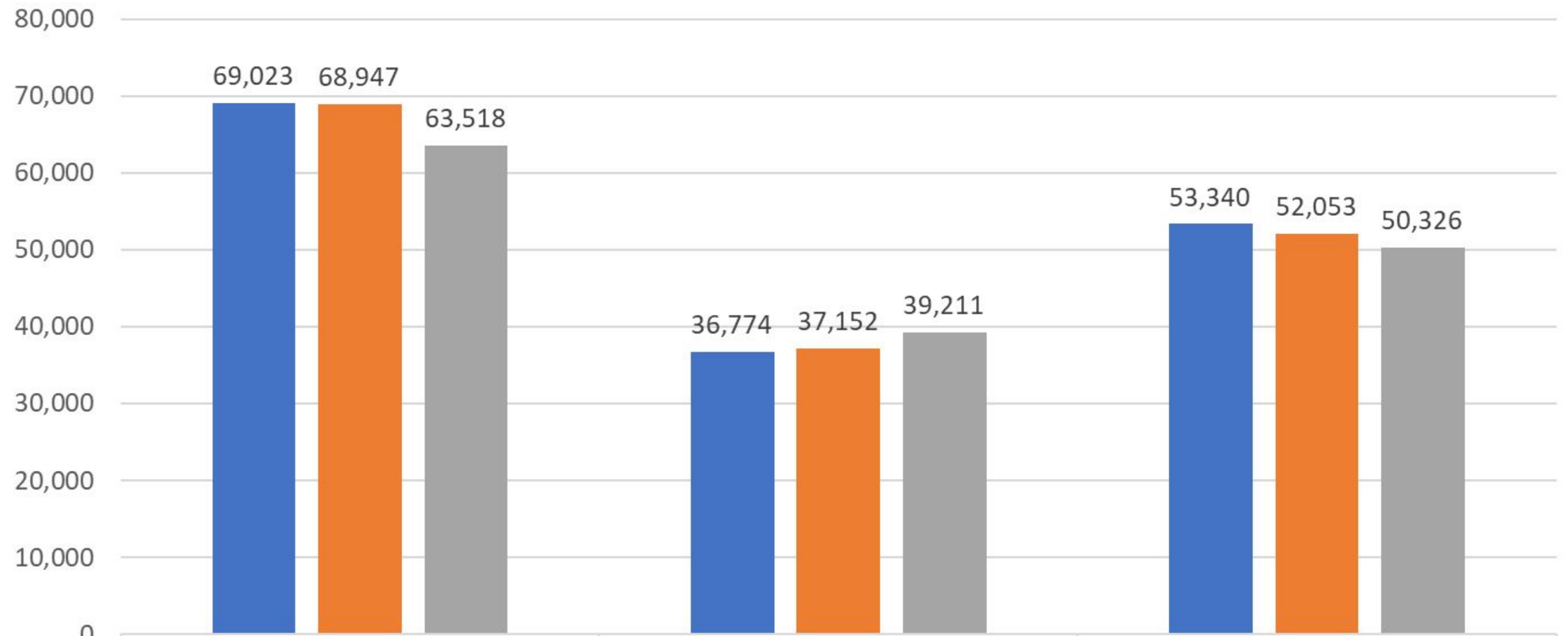
Crowding Management Tools

- Add capacity with new schools, renovations or trailers
- Provide and encourage consideration of magnet school choices
- Adjust student assignment areas
- Apply enrollment caps
- Change a school's traditional calendar to year round

New schools and renovations capacities

Class size legislation greatly affected the available capacity at elementary schools.

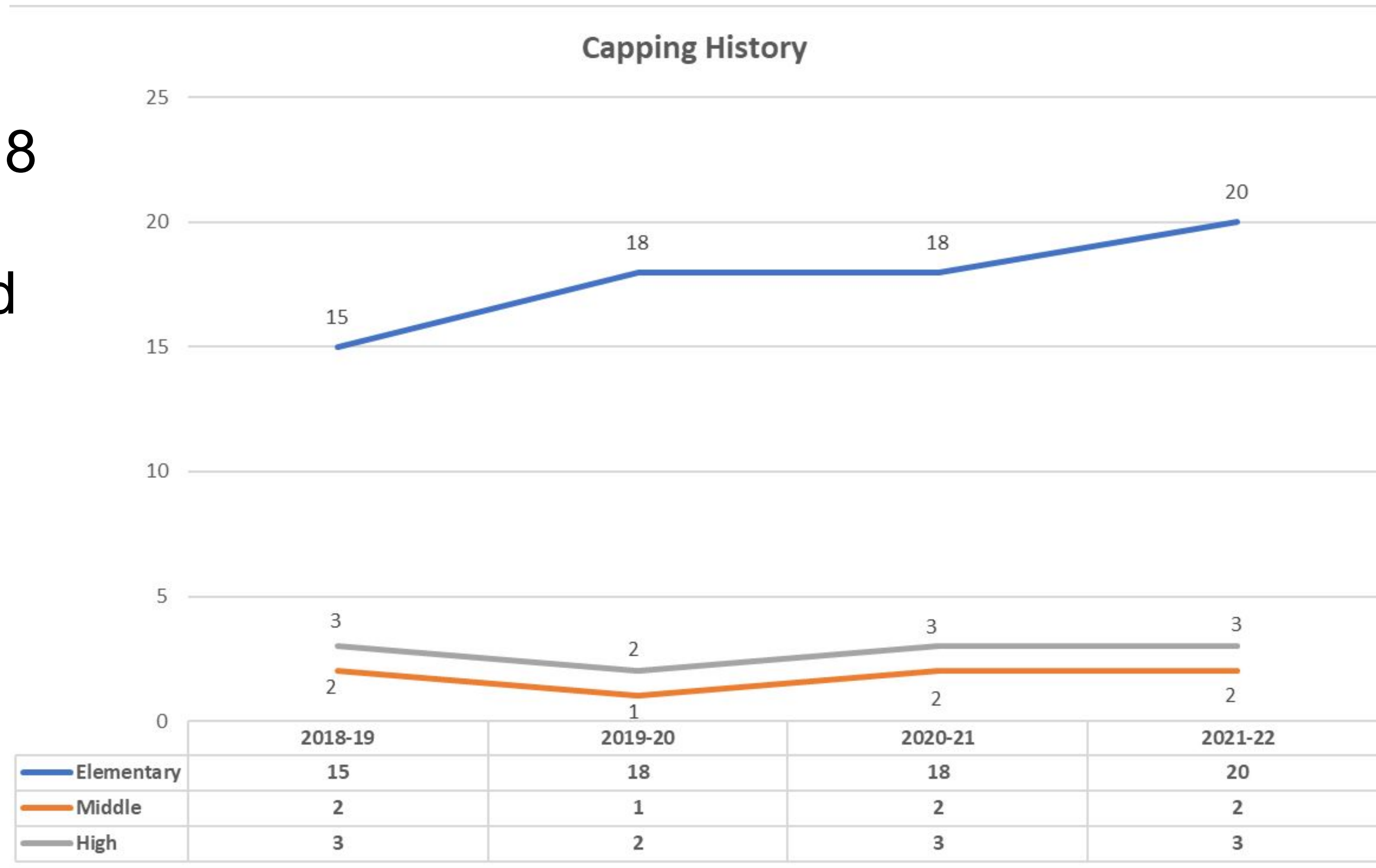
2022-23 PMR 1 By Grade Membership & 2021-22 PMR 2 & 2021-22 School Capacity



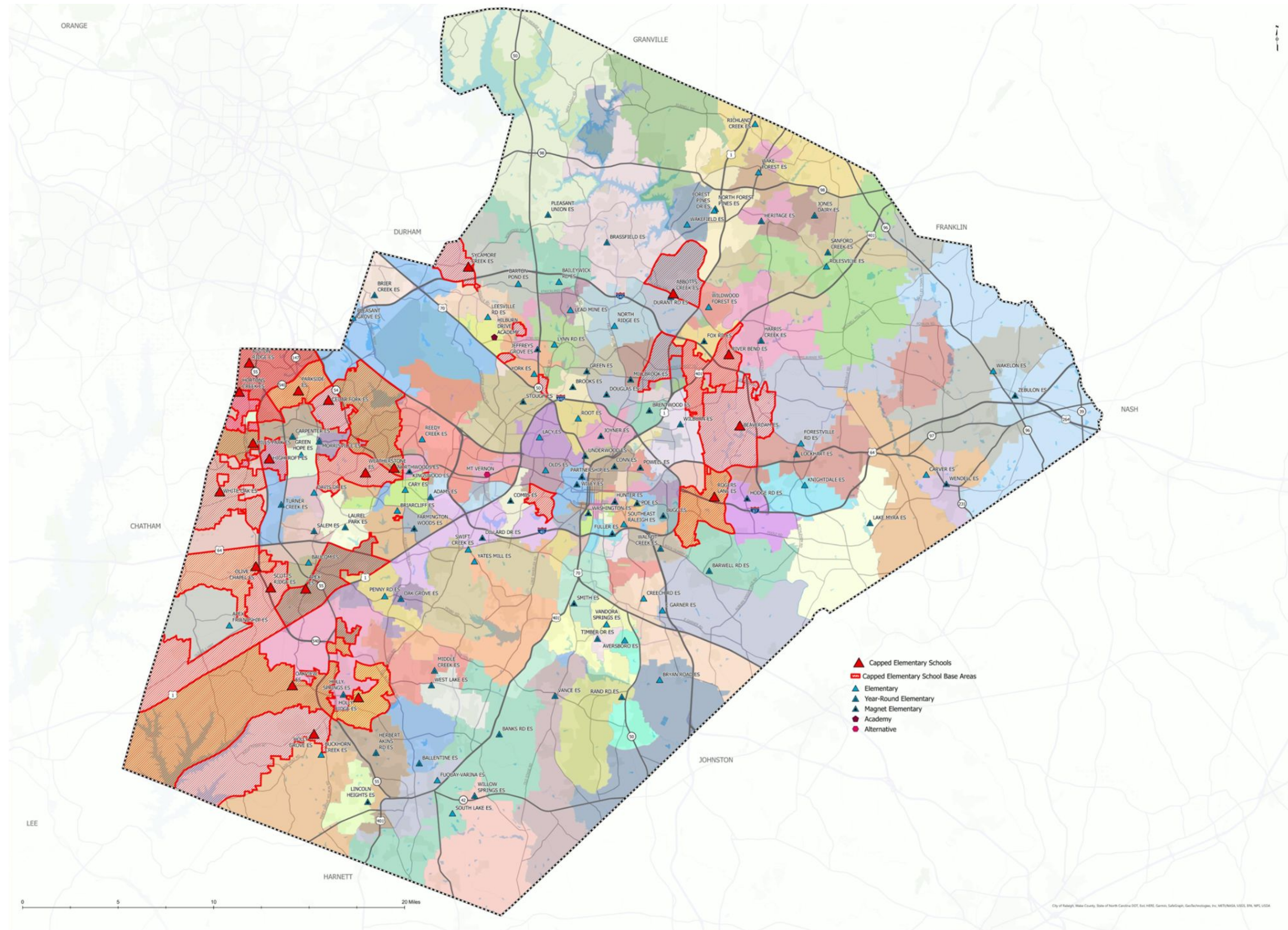
	Elementary	Middle	High
2022-23 PMR 1 By Grade Mem	69,023	36,774	53,340
2021-22 PMR 2 Membership	68,947	37,152	52,053
2021-22 School Capacity	63,518	39,211	50,326

Recommendations for capping and uncapping schools

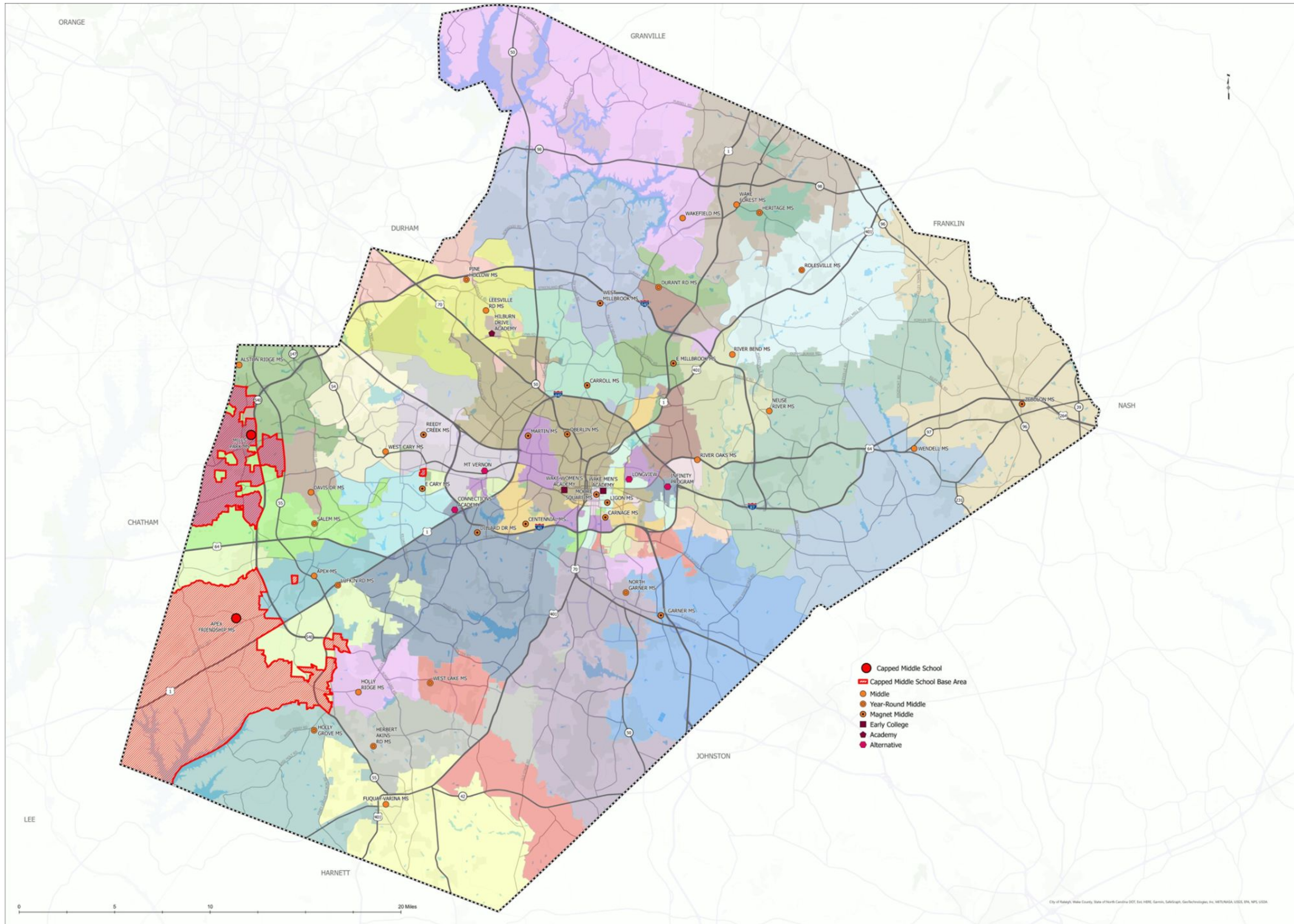
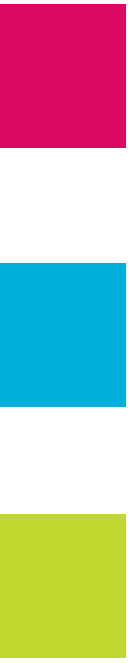
Since 2018-19, we have averaged 15 to 18 capped Elementary Schools, 1 to 2 capped Middle Schools, and 2 to 3 capped High Schools.



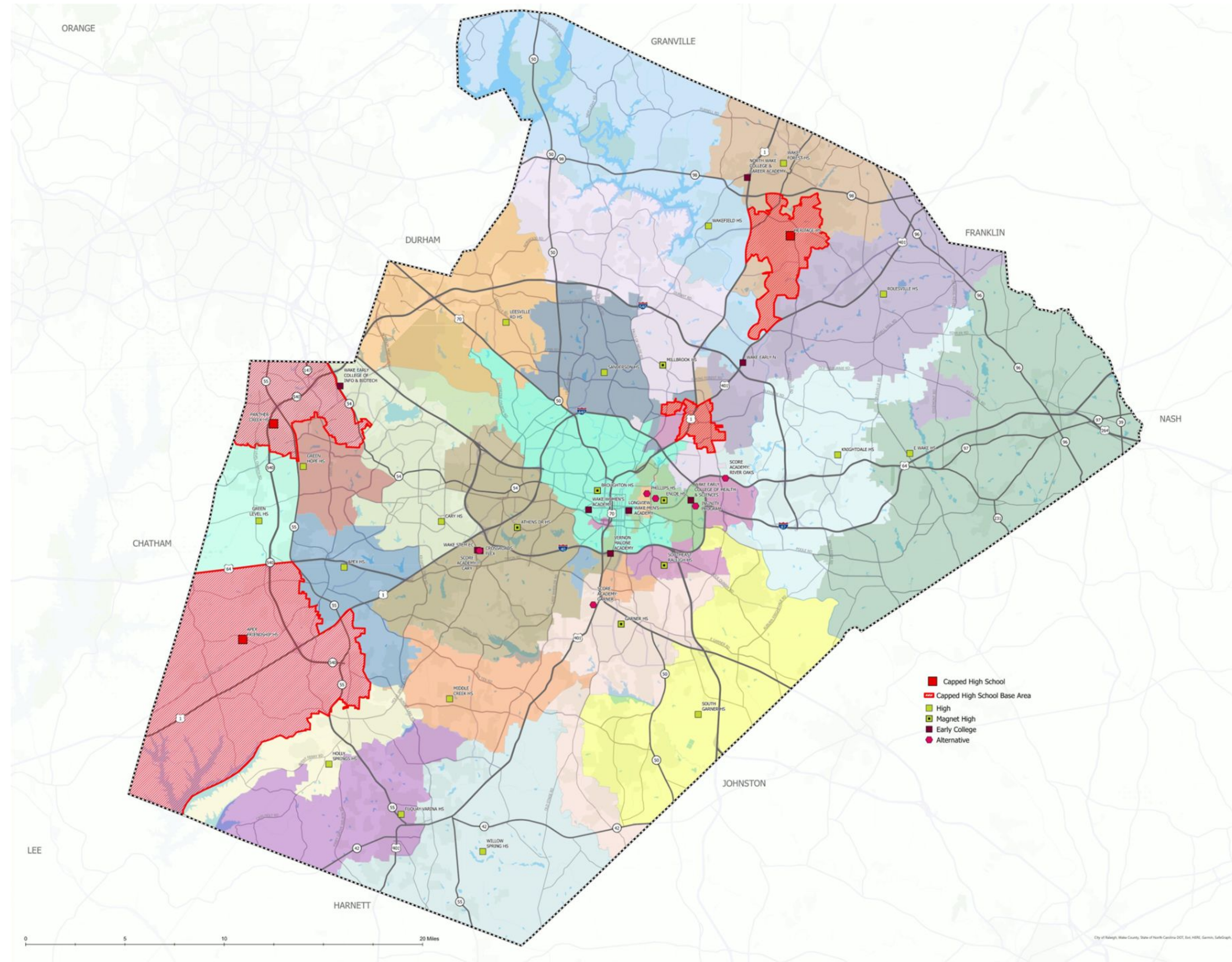
CAPPED ELEMENTARY SCHOOL ATTENDANCE AREAS 2022-23



CAPPED MIDDLE SCHOOL ATTENDANCE AREAS 2022-23



CAPPED HIGH SCHOOL ATTENDANCE AREAS 2022-23



Recommendations for school calendar change

ELEMENTARY SCHOOL CAPACITY (LARGE MODEL)							
Description	TRADITIONAL			MULTI-TRACK			
	Number of Classrooms	Student/Teacher Ratio	Planned Capacity	Number of Classrooms		Student/Teacher Ratio	Planned Capacity
				CR	YR ²		
K through 5 Classrooms							
K Classroom	7	18	126	7	9	18	162
1st grade Classroom	7	16	112	7	9	16	144
2nd grade Classroom	7	17	119	7	9	17	153
3rd grade Classroom	7	17	119	7	9	17	153
4th grade Classroom	5	24	120	5	6	26	156
5th grade Classroom	5	24	120	5	6	26	156
	38		716	38	48		924
Other Classrooms							
Extended Content Classroom	2	---	---	2		---	---
Special Education Services - Lg ¹	3	---	---	3		---	---
Special Education Services - Sm	2	---	---	2		---	---
General Ed. Support CR - Sm	5	---	---	5		---	---
Digital Collaboration (Media)	1	---	---	1		---	---
Art Classroom	1	---	---	1		---	---
Music Classroom	1	---	---	1		---	---
Multi-purpose Room	1	---	---	1		---	---
SUBTOTAL	54		716	54	64		924
Pre-Kindergarten	2	10	20	2	2	10	20
PERMANENT CAPACITY	56		716/20	56	66		924/20

MIDDLE SCHOOL CAPACITY (LARGE MODEL)							
Description	TRADITIONAL			Multi-Track			
	Number of Classrooms	Student/Teacher Ratio	Planned Capacity	Number of Classrooms		Student/Teacher Ratio	Planned Capacity
				CR	YR		
Regular Classroom	36	26	936	36	45	26	1170
Science Lab	12	26	312	12	15	26	390
General Ed. Support Classroom- Sm	3	---	---	3		---	---
Foreign Language	1	---	---	1		---	---
Extended Content Classroom	4	---	---	4		---	---
Special Education Services - Lg ¹	5	---	---	5		---	---
Special Education Services - Sm	4	---	---	4		---	---
Art Classroom	1	---	---	1		---	---
Choral Classroom	1	---	---	1		---	---
Band/Instrument Classroom	1	---	---	1		---	---
Stage (Dance/Drama)	1	---	---	1		---	---
Dance/Drama	1	---	---	1		---	---
FACS Lab	1	---	---	1		---	---
Technology Education or Exploring Biotechnology Lab	1	---	---	1		---	---
Business Education Lab	3	---	---	3		---	---
Aux. Gym	1	---	---	1		---	---
Health Ed. /Multi-purpose	4	---	---	4		---	---
ISS	1	---	---	1		---	---
PERMANENT CAPACITY TOTAL	54		1,248	54	66		1,560



School Crowding Thresholds

School Crowding Threshold Considerations

- What is the school utilization level?
- Is school crowding stable?
- Does school crowding by grade exceed legislative limits?
- What is the base assignment area for the school?
- What are the residential growth projections proximate to this school?
- Are there new schools, renovations or trailers planned that will benefit the capped schools?

Capacity Considerations Thresholds - Staff

- Watch/Yellow:
Approaching 95% Crowding

	ES	MS	HS
Reassign school space use	X	X	X
Classes on a Cart	X		
Pull out/Push in SPED	X	X	X
Magnet marketing			
Class size waiver	X		
Possible trailer addition	X	X	X
Reassignment recommendation			
Possible capping recommendation			
Calendar change recommendation			

2022-23 Facilities Utilization						
09. 29.22						
Schools	2022-23 OASIS Current Membership as of 09.19.22	School Building Capacity	Capacity Trailers at School	School Building Capacity w/Trailers	School Crowding Percentage w/Trailers	Non-Capacity & Retired Trailers
Elementary						
ES Example A (T)	512	410	7	550	93.1%	1
ES Example B (T)	274	308	0	308	89.0%	0
ES Example C (M-T)	607	616	5	716	84.8%	0
ES Example D (T)	503	410	11	630	79.8%	2
Middle						
MS Example A (T)	980	936	6	1,092	89.7%	0
MS Example B (T)	959	936	3	1,014	94.6%	0
MS Example C (T)	1,052	1,248	0	1,248	84.3%	0
MS Example D (T)	873	936	6	1,092	79.9%	0
High						
HS Example A (T)	1,486	1,680	0	1,680	88.5%	0
HS Example B (T)	1,741	2,240	0	2,240	77.7%	0
HS Example C (T)	1,870	2,203	0	2,203	84.9%	0
HS Example D (T)	2,060	2,203	0	2,203	93.5%	0

Capacity Considerations Thresholds - Staff and BOE

- Warning/Orange:
95% - 110% Crowding

	ES	MS	HS
Reassign school space use	X	X	X
Classes on a Cart	X		
Pull out/Push in SPED	X	X	X
Magnet marketing	X	X	X
Class size waiver	X		
Possible trailer addition	X	X	X
Reassignment recommendation	X	X	X
Possible capping recommendation	X	X	X
Calendar change recommendation			

2022-23 Facilities Utilization						
<i>09. 23.22</i>						
Schools	2022-23 OASIS Current Membership as of 09.19.22	School Building Capacity	Capacity Trailers at School	School Building Capacity w/Trailers	School Crowding Percentage w/Trailers	Non-Capacity & Retired Trailers
Elementary						
ES Example A (T)	605	618	0	618	97.9%	0
ES Example B (T)	274	308	0	308	89.0%	0
ES Example C (T)	503	410	11	630	79.8%	2
ES Example D (M-T)	607	616	5	716	84.8%	0
Middle						
MS Example A (T)	980	936	6	1,092	89.7%	0
MS Example B (T)	873	936	6	1,092	79.9%	0
MS Example C (T)	1,052	1,248	0	1,248	84.3%	0
MS Example D (M-T)	1,521	1,560	0	1,560	97.5%	0
High						
HS Example A (T)	1,486	1,680	0	1,680	88.5%	0
HS Example B (T)	2,125	2,172	0	2,172	97.8%	0
HS Example C (T)	1,741	2,240	0	2,240	77.7%	0
HS Example D (T)	1,870	2,203	0	2,203	84.9%	0

Capacity Considerations Threshold - Staff and BOE

- Action/Red:
110%+ Crowding

	ES	MS	HS
Reassign school space use	X	X	X
Classes on a Cart	X		
Pull out/Push in SPED	X	X	X
Magnet marketing	X	X	X
Class size waiver	X		
Possible trailer addition	X	X	X
Reassignment recommendation	X	X	X
Possible capping recommendation	X	X	X
Calendar change recommendation	X	X	

2022-23 Facilities Utilization						
<i>09. 23.22</i>						
Schools	2022-23 OASIS Current Membership as of 09.26.22	School Building Capacity	Capacity Trailers at School	School Building Capacity w/Trailers	School Crowding Percentage w/Trailers	Non-Capacity & Retired Trailers
Elementary						
ES Example A (T)	754	573	0	573	131.6%	0
ES Example B (T)	274	308	0	308	89.0%	0
ES Example C (T)	503	410	11	630	79.8%	2
ES Example D (M-T)	607	616	5	716	84.8%	0
Middle						
MS Example A (T)	1,052	1,248	0	1,248	84.3%	0
MS Example B (T)	873	936	6	1,092	79.9%	0
MS Example C (T)	1,631	1,248	4	1,352	120.6%	0
MS Example D (T)	980	936	6	1,092	89.7%	0
High						
HS Example A (T)	1,870	2,203	0	2,203	84.9%	0
HS Example B (T)	1,741	2,240	0	2,240	77.7%	0
HS Example C (T)	2,781	2,240	6	2,384	116.7%	0
HS Example D (T)	1,486	1,680	0	1,680	88.5%	0

Crowding Considerations Requiring Board Review &/or Action

- Multi-Year Enrollment Plan **Review and Action**
- Facility Utilization Report **Review**
- Enrollment Capping Recommendations **Review and Action**
- Calendar Change Recommendations **Review and Action**



Conclusion

Future Agenda Topics - 2022-23 Crowding Considerations

- Fall 2022: Finalizing Multi-Year Enrollment Plan
- Fall 2022: Facilities Utilization Report 2022-2023
- Spring 2023: Capping/Cap Removal/Calendar Change recommendations

Discussion & Questions

