



CAMPO-WCPSS

Safe Routes to Schools-Potential LAPP Projects

September 23, 2022

Joining us today

Transportation:

Ms. Joy Mylin-Senior Administrator/Routing Manager

Facilities Design and Construction:

Ms. Elizabeth Sharpe-Director

Ms. Alice Reese-Senior Site Planner

School Choice, Planning and Assingnment

Mr. Glenn Carrozza-Assistant Superintendent

CAMPO-WCPSS History

- Several years ago, CAMPO reached out to partner with WCPSS to obtain some data for their Safe Routes to School work.
- Recently, WCPSS has agreed to collaborate more in hopes of providing some relief to our transportation requirements.
- Several school sites have been identified as potential projects that may improve the safety for students/families to access the school campus.

Potential Projects

Criteria:

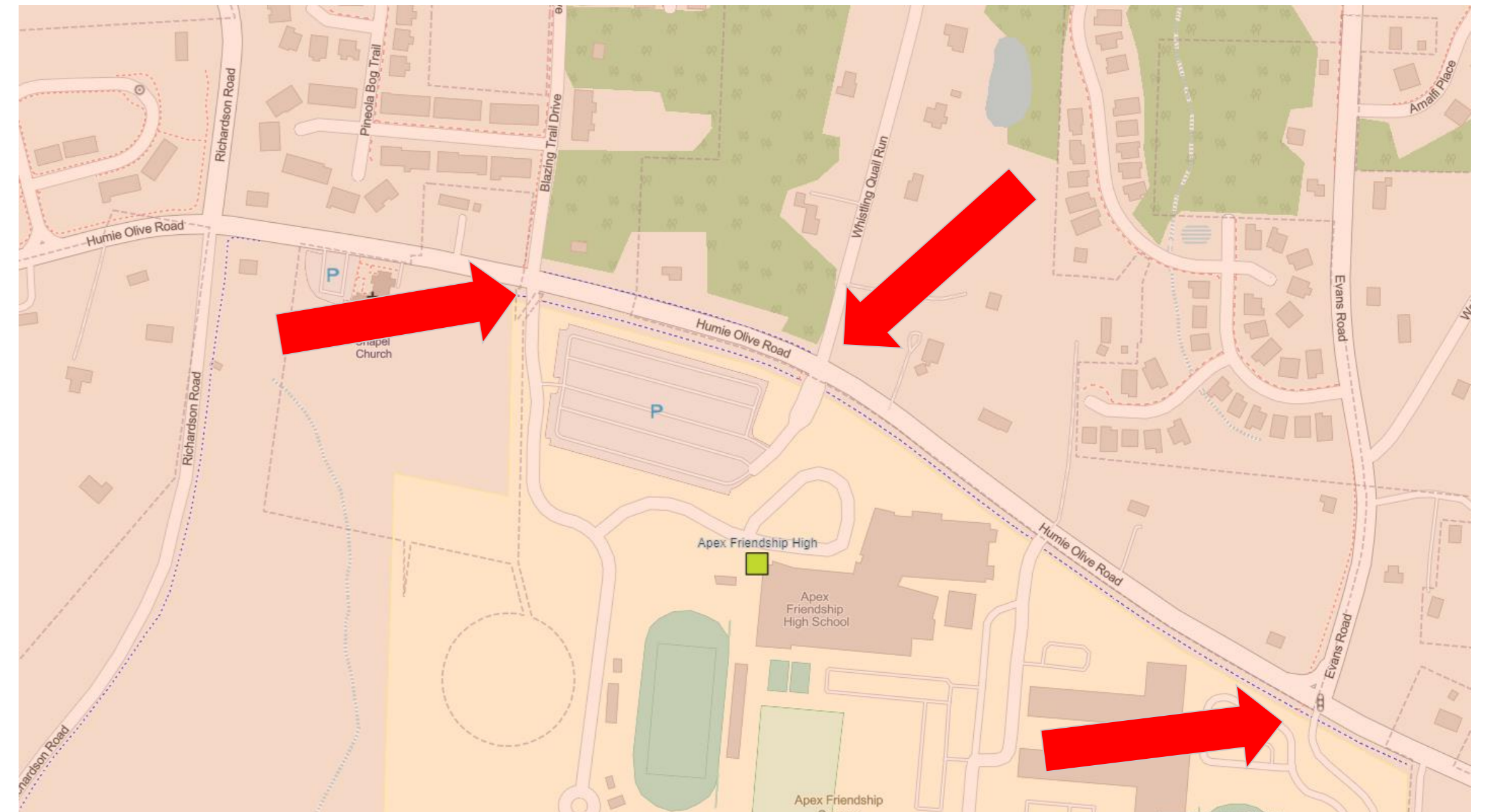
- Can improvements be made, so that the No Transport Zone may be expanded for a school campus?
- Does the school have interest from families to increase their ability to safely access the school campus?
- Will the ability for families to access the campus safely benefit the school campus?

No Transport Zone Criteria

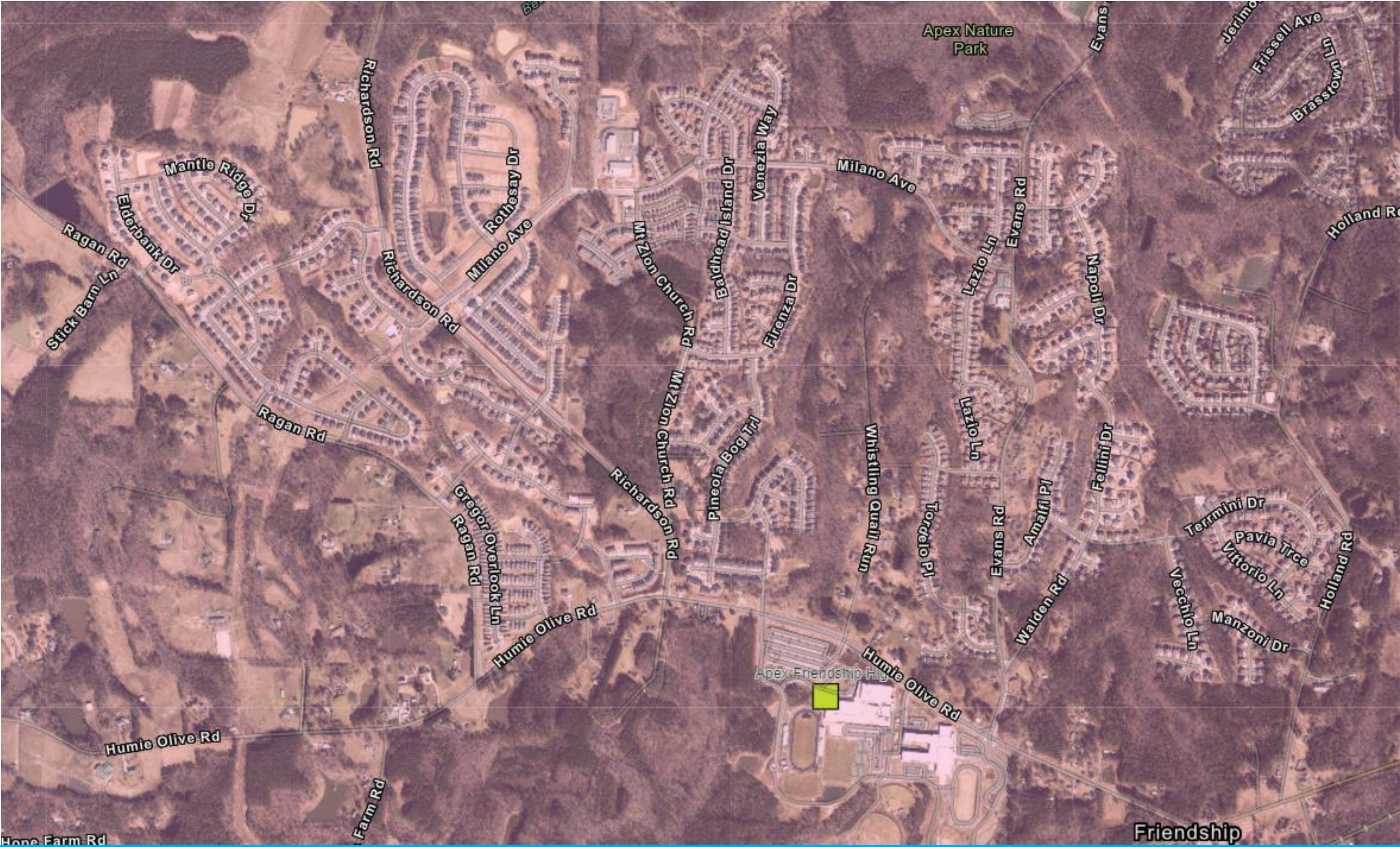
- Per State Statute 115C-246, A pupil who lives **one and one-half miles** or more from the school to which the pupil is assigned shall be eligible for school bus transportation.
- WCPSS creates a No Transport Zone for areas that will not receive district bus transportation.
- No Transport Zones include walk paths that have no obstructions and that students may safely cross the street(s) in order to access the school campus.
- Greenways that are secluded and are not visible to the general public have **not** been included in No Transport Zones.

Potential Projects-Apex Friendship Campus

- The Apex Friendship Campus houses the elementary, middle and high schools.
- The neighborhoods across Humie Olive Road to the north of the campus could be considered for the No Transport Zone if road improvements were made to allow for safe crossing.



Potential Projects-Apex Friendship Campus



Potential Solutions

- Crossing Guards
- Stop signs with line striping
- Flashing crosswalks
- Others?



Similar Potential Projects

Cary:

- Green Level High School-Green Level Church/Roberts Road area
- West Cary Middle School-Evans Road

Fuquay-Varina:

- South Lakes Elementary-Old Honeycutt Road

Garner:

- Bryan Road Elementary-Bryan Road

Similar Potential Projects

Holly Springs:

- Buckhorn Creek Elementary-Honeycutt Road
- Holly Ridge Elementary/Middle-Holly Springs Road
- Holly Springs Elementary-Holly Springs Road

Knightdale:

- Lockhart Elementary-Forestville Road

Morrisville:

- Parkside Elementary-Louis Stephens Road or Davis Drive

Similar Potential Projects

Raleigh:

- Hilburn Drive Academy-Hilburn Drive or Lynn Road
- Lead Mine Elementary-Old Lead Mine Road
- Wildwood Forest Elementary-Wildwood Forest Drive

Rolesville:

- Sanford Creek Elementary-Granite Falls Blvd.

Similar Potential Projects

Wendell:

- Location of new Wendell site-TBD

Zebulon:

- Zebulon Middle-Shepherd School Road

Other Potential Projects Involving Greenways?

- Many greenways have not been identified as No Transport Zones due to the lack of visibility to the general public.
- If greenways were used for students to cross a tree buffer area, there may be potential to include those areas as part of a No Transport Zone.



Potential Projects with Greenways

Bryan Road Elementary-Garner (connecting new neighborhoods behind the school)

Heritage High School-Wake Forest (connecting the neighborhood to the south of the school)

Holly Springs High-Holly Springs (connecting the neighborhoods to the east and south of the school)

Jones Dairy Elementary-Wake Forest (connecting the neighborhoods to the west and south of the school)

Contact Us For Further Discussion

Glenn Carrozza- gcarrozza@wcpss.net

Elizabeth Sharpe- esharpe@wcpss.net

Alice Reese- areese@wcpss.net

Jennifer Delcourt- Jennifer.Delcourt@wakegov.com

Kenneth Withrow- Kenneth.Withrow@campo-nc.us