

# WCPSS 2024-2025 Enrollment Plan

## Draft #1

*A Multi-year Approach to Growth Management*

Prepared by the Office of Student Assignment

Board of Education Work Session  
September 19, 2023

# Purpose

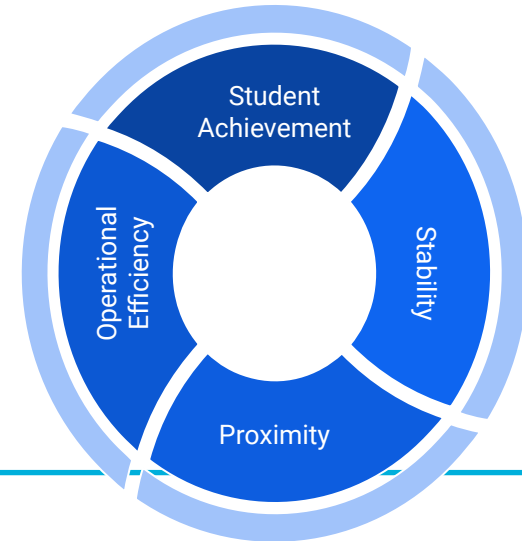
Staff is here today to share the initial draft of the 2024-2025 Enrollment Plan.

Our goal for today's meeting is to share information related to the development of the first draft and to solicit feedback from the Board, so that staff may prepare a revised (Draft #2) 2024-2025 Enrollment Plan.

# WCPSS Board Policy 4150: School Assignment and Transfers

## Section A. Drawing of School Attendance Areas

1. The assignment areas will be developed by balancing, to the extent reasonable, the goals and factors set forth below and will include target ranges, where appropriate, to accomplish these goals and factors:
  - a. **Student Achievement**
  - b. **Stability**
  - c. **Proximity**
  - d. **Operational Efficiency**



# Overview

- **Updates**

- Public Engagement Progress
- Capped and Overcrowded Schools
- Current Capital Improvement Plan (CIP)

- **First Draft of Enrollment Plan**

- Recommendations for Base Assignment Changes
- Recommendations for Calendar Application Changes
- Recommendations for Stability Rules for 2024-2025

- **Timeline / Next Steps**

- **Addendum**



# Updates



# Public Engagement Progress



# Information & Updates

[www.wcpss.net/2024enrollmentproposal](http://www.wcpss.net/2024enrollmentproposal)



# Community Engagement Sessions (Review)

# Regional Public Engagement Sessions: Participation

Future School	Session Date	# Participants	ThoughtExchange*	
			# Participants	# Thoughts
<b>Bowling Road ES</b> <i>@ Lincoln Heights ES</i>	May 11	2	0	0
<b>Felton Grove HS</b> <i>@ Holly Springs HS</i>	May 4	94	213	183
<b>Hilltop Needmore ES</b> <i>@ Banks Road ES</i>	May 15	20	7	6
<b>Parkside MS</b> <i>@ Parkside ES</i>	March 30	37**	371	314
<b>Pleasant Plains ES</b> <i>@ Scotts Ridge ES</i>	April 13	10	15	27
<b>Rex Road ES</b> <i>@ Holly Grove ES</i>	April 3	12	75	64
<b>Woods Creek ES</b> <i>@ Baucom ES (Woods Creek ES)</i>	April 27	15	24	27
<b>Totals</b>		<b>190</b>	<b>705</b>	<b>621</b>

# Regional Public Engagement Sessions: Core Question



What are the most important things that district leadership should be aware of and take into consideration when managing enrollment growth and school crowding?

# Regional Public Engagement Sessions: Key Takeaways

## Requests to:

- Communicate information & decisions early (calendar, assignment area, etc.)
- Be mindful of traffic patterns & major highways when developing assignment areas for new schools
- Allow for cohort continuity for students as they promote to middle & high school
- Clarify the availability of before & after school care at new schools
- Be mindful of student needs (IEPs, advanced coursework, extracurricular activities, etc.) when opening new schools and transitioning students from one school to another
- Be able to start and finish at the same school
- Expand 'walk zones' for schools to promote proximate assignments
- Avoid assignments to multiple schools for the same neighborhood

What are the most important things that leadership should be aware of and take into consideration when opening a new school in your community?

# Regional ThoughtExchanges: Themes

## → Communication

- ◆ Clear, consistent & frequent updates; opportunities to engage & provide feedback

## → Continuity

- ◆ Cohort continuity; stability of assignments for families & neighborhoods

## → Crowding

- ◆ School size, capacity & crowding

## → Plans for Growth

- ◆ Planning for long-term needs based on growth/ new residential developments

## → Proximity

- ◆ Close to home; close to neighborhood

## → Quality Education for All

- ◆ Equal & equitable access to resources, classes & extracurriculars; supports for AIG, IEP & 504 plans

## → School Choice

- ◆ School & calendar options

## → School Operations

- ◆ Bell schedules; before & after school care options; safety; class sizes

## → Transportation

- ◆ Reliability of bus service; options to walk to school; traffic & commute times; carpool considerations

# Regional ThoughtExchanges: Sample Results



# Regional Public Engagement Outcomes: Impacts on Planning

## Conduct Focus Groups

- Address topics that require clarity (cohort continuity, etc.)
- Address topics that were not addressed (calendar, etc.)

## Review Stability Rules

- Consider concerns related to stability of assignment, balanced with enrollment growth patterns and operational concerns

## Review Feeder Patterns

- Consider concerns related to cohort & calendar continuity



# Focus Groups

# Focus Groups: Summary

- Based on feedback gathered from spring public engagement activities, **cohort continuity** and **school calendar alignment** surfaced as important factors
- Partnered with Data, Research and Accountability staff to conduct focus groups to gain a deeper understanding of parents' concerns and priorities specific to these factors
- Held three separate sessions during June with 5-7 participants per session that focused on three core questions during each session

# Focus Groups: Key Takeaways

- **keep students together** (from the same neighborhood, on the same school calendar, or rising together into the next school level)
  - Parents expressed that continuity of peer groups forges strong social bonds, builds resilience and ultimately improves academic performance
- **year-round calendar** is preferred as a solution for crowding
  - Parents expressed that stability of school assignment is important
- **calendar alignment** preferences vary by family
  - Parents expressed that K-8 alignment may offer stability for younger students and students with special needs, and that 6-12 alignment may offer stability for older students, especially those involved in after-school activities

# Public Engagement: Next Steps

## Draft #1 Public Engagement Activities

- September 19:
  - District website is updated with Draft 1 information ([wcpss.net/2024enrollmentproposal](http://wcpss.net/2024enrollmentproposal))
- September 19 - October 6:
  - Open ThoughtExchange: “What are your thoughts or questions about the proposed changes?” ([wcpss.net/draft1feedback](http://wcpss.net/draft1feedback))
- September 26 - October 5:
  - Host Regionally Focused Virtual Public Information Sessions
    - September 26, 6:00-7:30 pm - Northwestern Area
    - September 28, 6:00-7:30 pm - Central Area, Northern Area & Northeastern Area
    - October 4, 6:00-7:30 pm - Southern Area & Southwestern Area
    - October 5, 6:00-7:30 pm - Southeastern Area & General Overview



# Information & Updates

[www.wcpss.net/2024enrollmentproposal](http://www.wcpss.net/2024enrollmentproposal)



# Capped and Overcrowded Schools

# Capped/ Overcrowded Schools for 2023-2024

## Capped Elementary Schools\*

Abbotts Creek

Alston Ridge (MTYR)

Apex

Apex Friendship

Beaverdam

Cedar Fork

Highcroft Drive

Holly Grove (MTYR)

Holly Ridge

Hortons Creek

Mills Park

Northwoods

Oakview

Olive Chapel (MTYR)

Parkside (MTYR)

River Bend

Rogers Lane

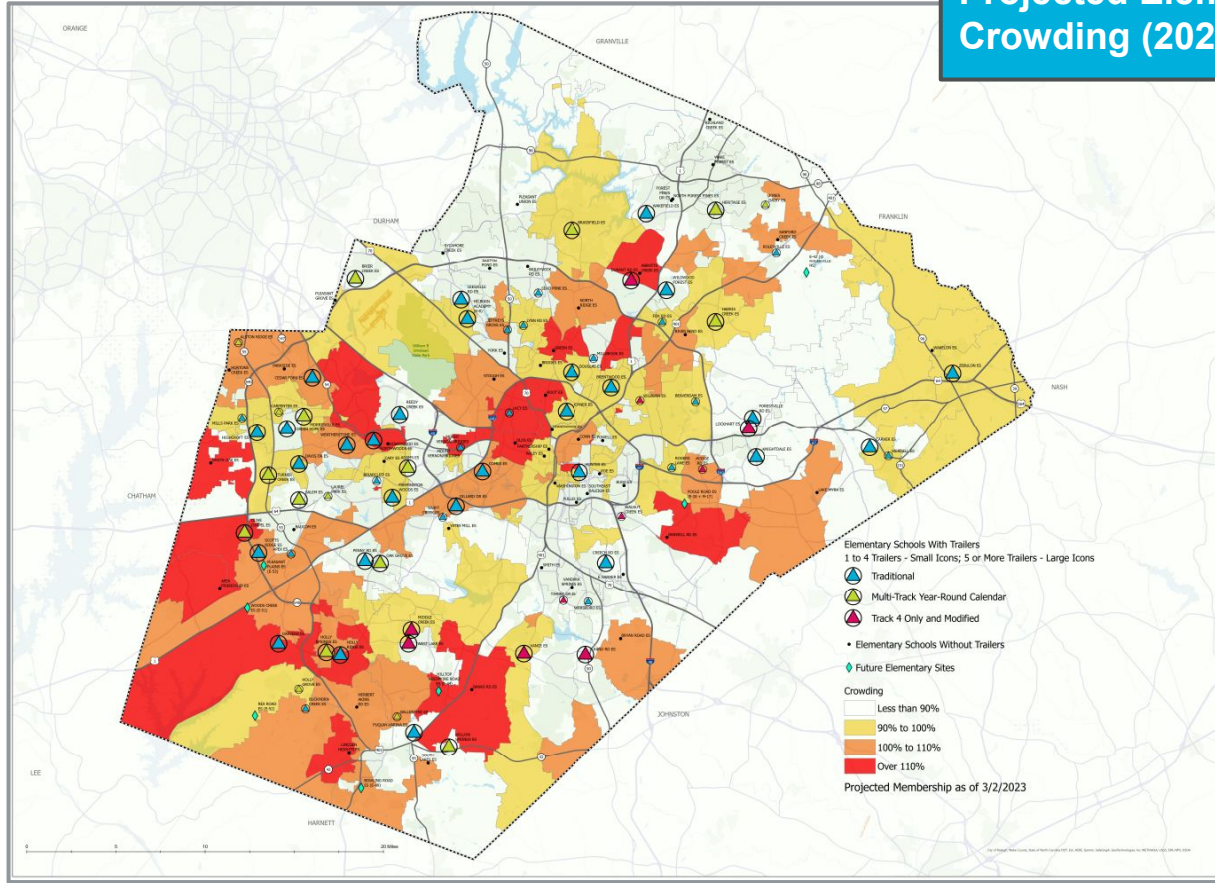
Scotts Ridge

Weatherstone

White Oak

\*as of February 21, 2023  
(MTYR) = multi-track year round

# Projected Elementary School Crowding (2023-24)



# Capped/ Overcrowded Schools for 2023-2024 *(continued)*

## Capped Middle Schools\*

Apex Friendship

Mills Park

## Capped High Schools\*

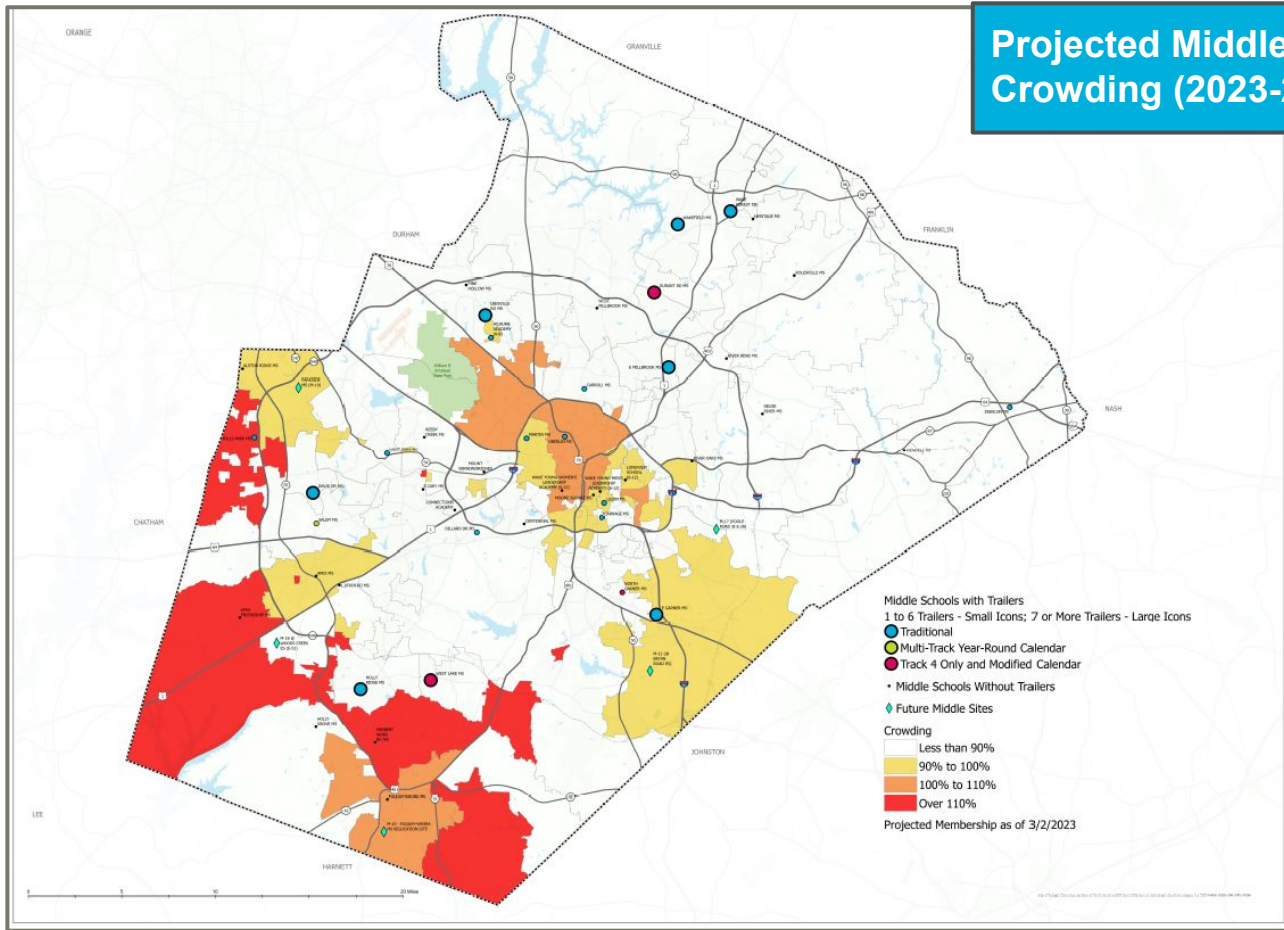
Apex Friendship

Heritage

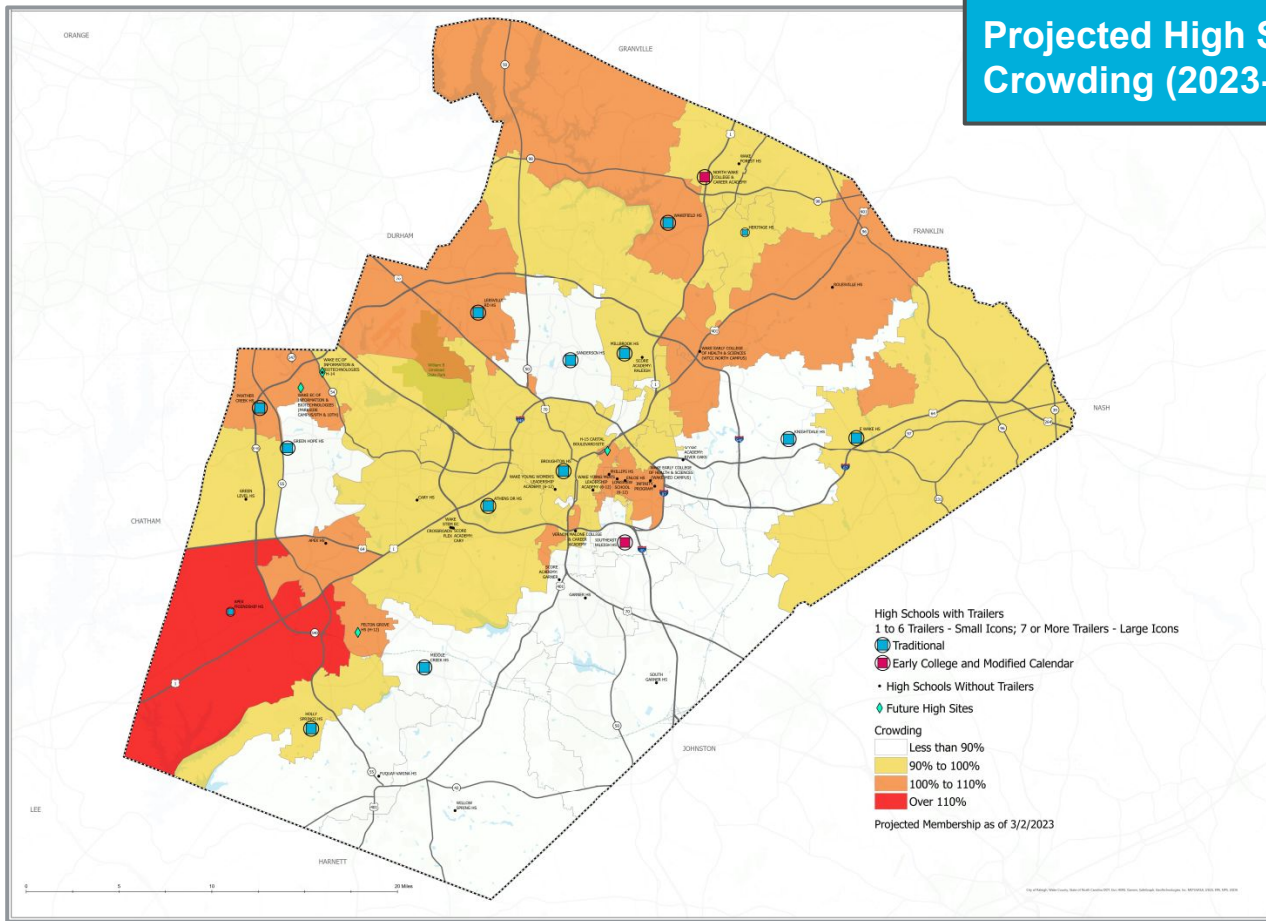
Panther Creek

\*as of February 21, 2023

# Projected Middle School Crowding (2023-24)



# Projected High School Crowding (2023-24)





# Current Capital Improvement Plan (CIP)

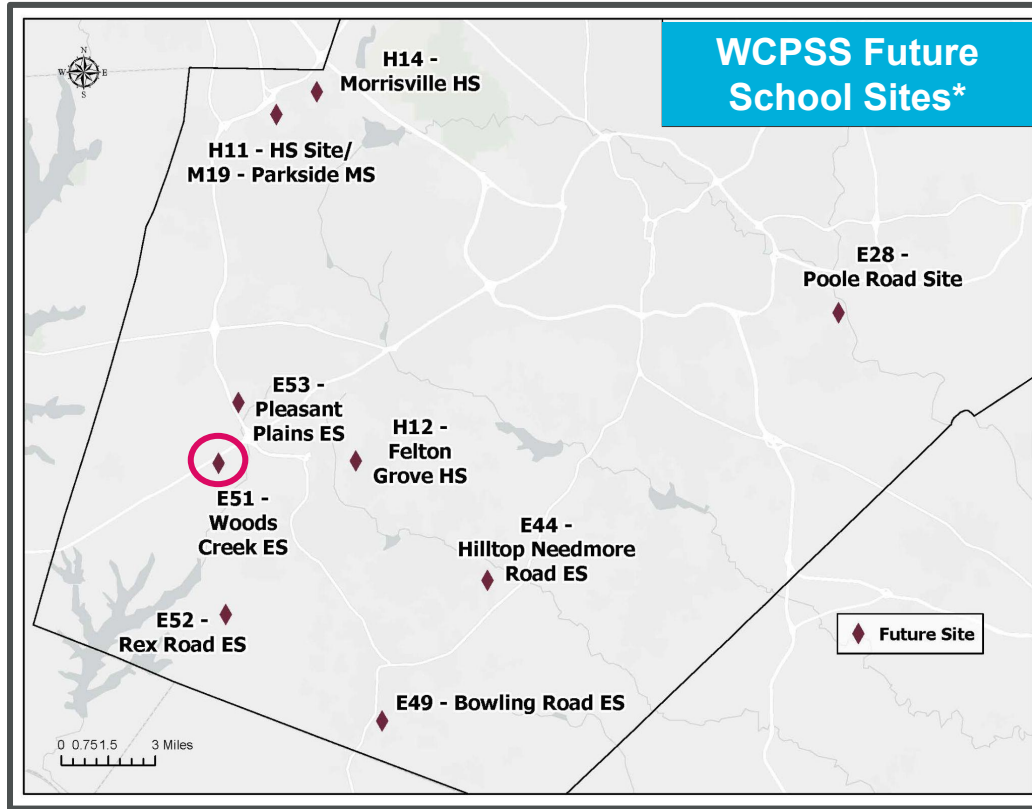
# Review of Current CIP: Seven-year Plan for Future School Openings\*

Code	School Name	2023-24	2024-25	2025-26	2026-27	2027-28	2028-29	2029-30	2030-31
E51	Woods Creek ES	Baucom ES	E51 ES						
E44	Hilltop Needmore ES			E44 ES					
E52	Rex Road ES			E52 ES					
E49	Bowling Road ES			E49 ES					
H12	Felton Grove HS			H12 HS					
E53	Pleasant Plains ES			E53 ES					
M19	Parkside MS/ Wake EC of Infor. & Biotech.			M19 MS/ H11 EC					
H14	Morrisville HS					H14 HS			
E28	Poole Road Site								E28 ES
	Swing Space: A new school serves as a swing space for an existing school's renovation before opening with its own population.								
	New school opening with unique base attendance area								

*This seven-year plan is designed with flexibility, so that it may be reviewed annually by WCPSS staff and Wake County Planners.*

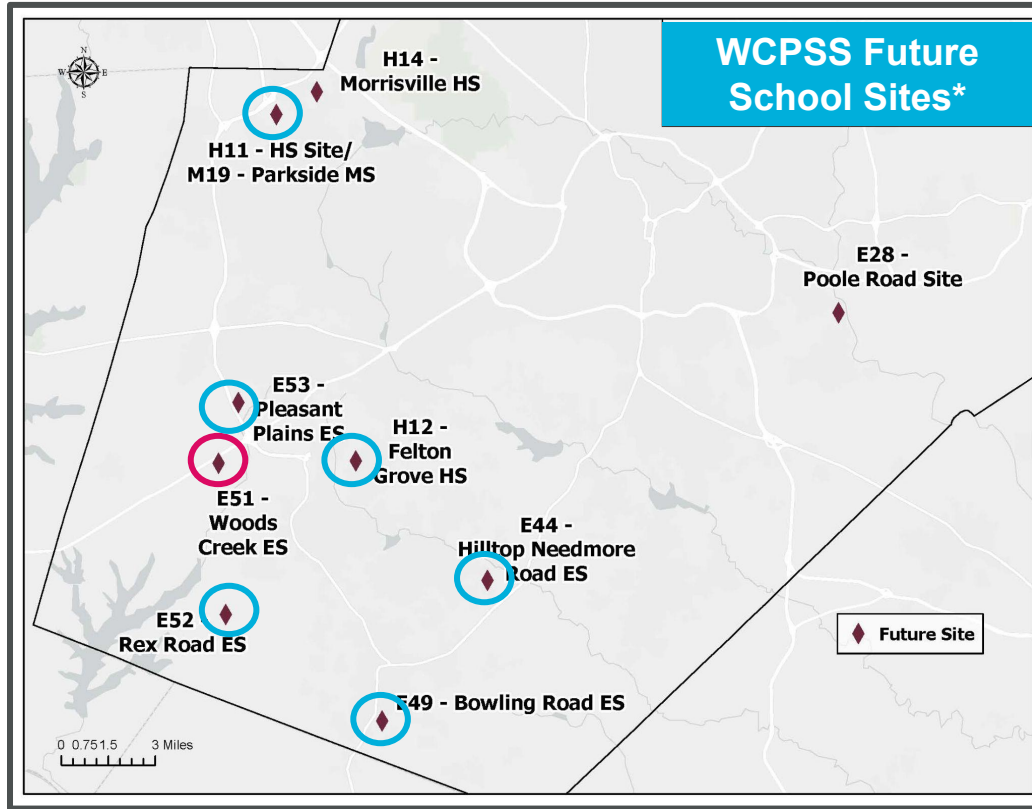
*\*Note: Market volatility, scope changes & design/ construction schedules have the potential to impact scheduled project completion dates.*

# Future School Sites\*



*\*Note: Market volatility, scope changes & design/ construction schedules have the potential to impact scheduled project completion dates.*

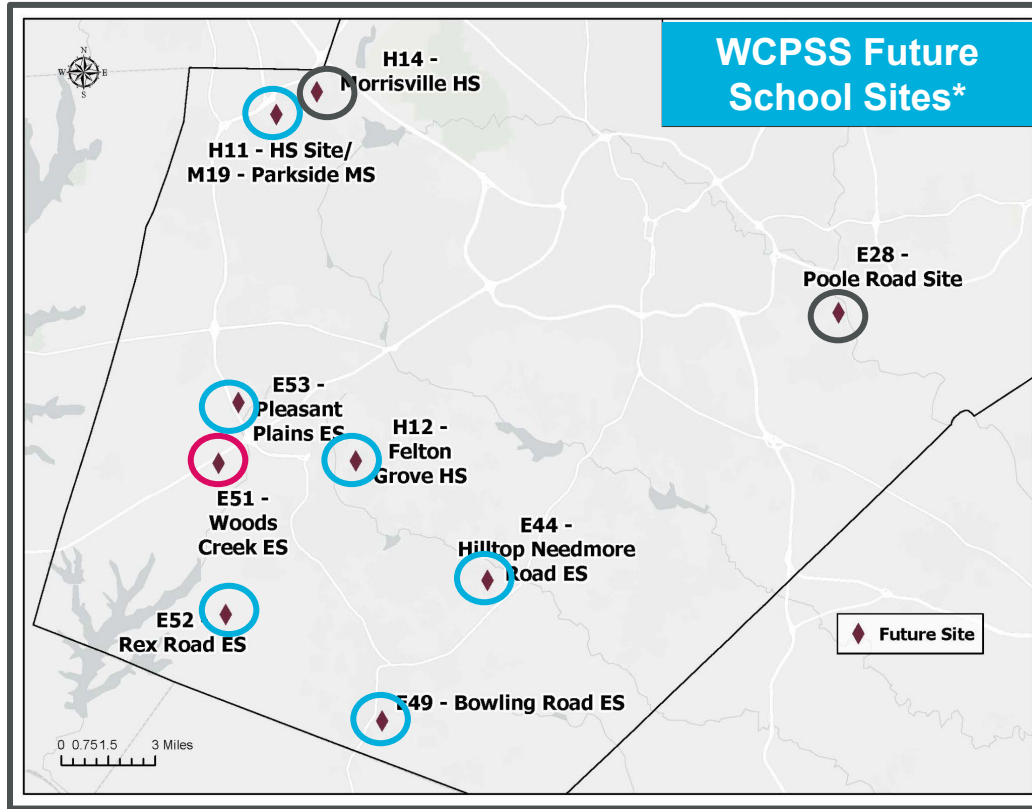
# Future School Sites\*



## WCPSS Future School Sites\*

*\*Note: Market volatility, scope changes & design/ construction schedules have the potential to impact scheduled project completion dates.*

# Future School Sites\*



WCPSS Future School Sites\*

*\*Note: Market volatility, scope changes & design/ construction schedules have the potential to impact scheduled project completion dates.*



# First Draft of Enrollment Plan



# Recommendations for Base Assignment Changes

# Base School Impacts (2024-25) – Elementary School

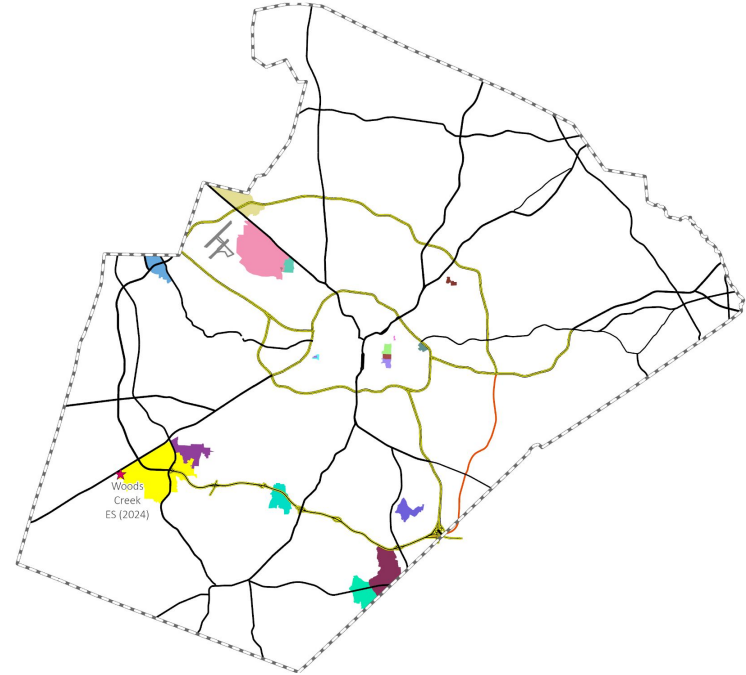
## Base Attendance Areas Impacted:

### Sending Schools:

Alston Ridge  
Apex  
Banks Road  
Bryan Road  
Carpenter  
Durant Road  
Holly Springs  
Leesville Road  
Oakview  
Parkside  
Pleasant Grove  
Sanford Creek  
Southeast Raleigh

### Receiving Schools:

Aversboro  
Brier Creek  
Combs  
Durant Road  
Hunter  
Joyner  
Leesville Road  
Oak Grove  
Olds  
Partnership  
Pleasant Grove  
Powell  
Rand Road  
Stough  
Underwood  
Vance  
West Lake  
York  
Woods Creek - NEW



# Base School Impacts (2024-25) – Middle School

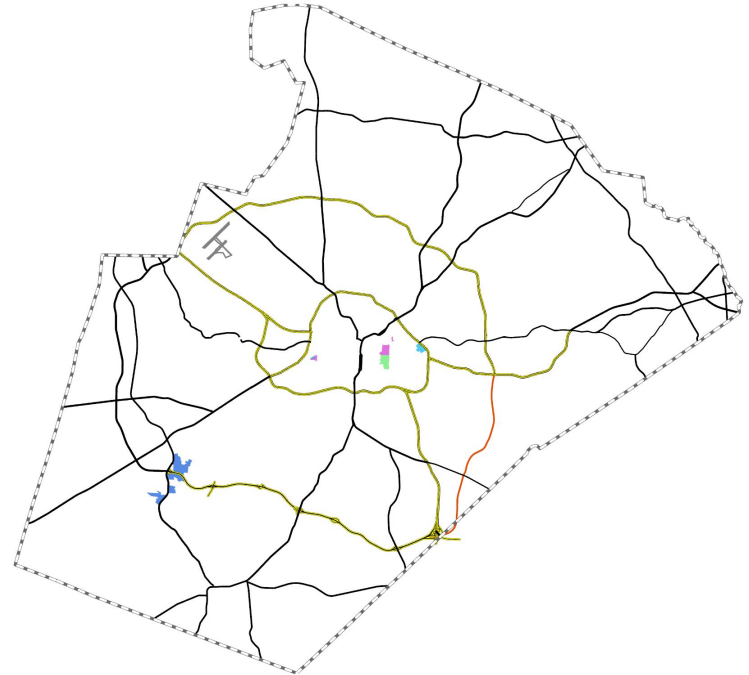
## Base Attendance Areas Impacted:

### Sending Schools:

Alston Ridge  
Apex  
Apex Friendship  
Centennial  
Durant Road  
Leesville Road

### Receiving Schools:

Centennial  
Ligon  
Lufkin Road  
Martin  
Moore Square



# Base School Impacts (2024-25) – High School

## Base Attendance Areas Impacted:

Sending Schools:

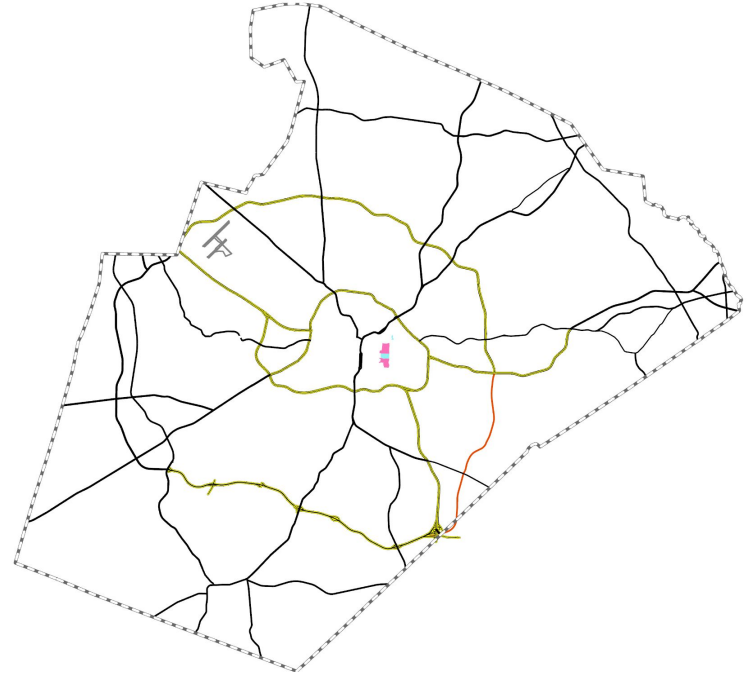
Leesville Road

Southeast Raleigh

Receiving Schools:

Broughton

Enloe





# Southern Area & Southwestern Area

# Woods Creek Elementary (opening July 2024)



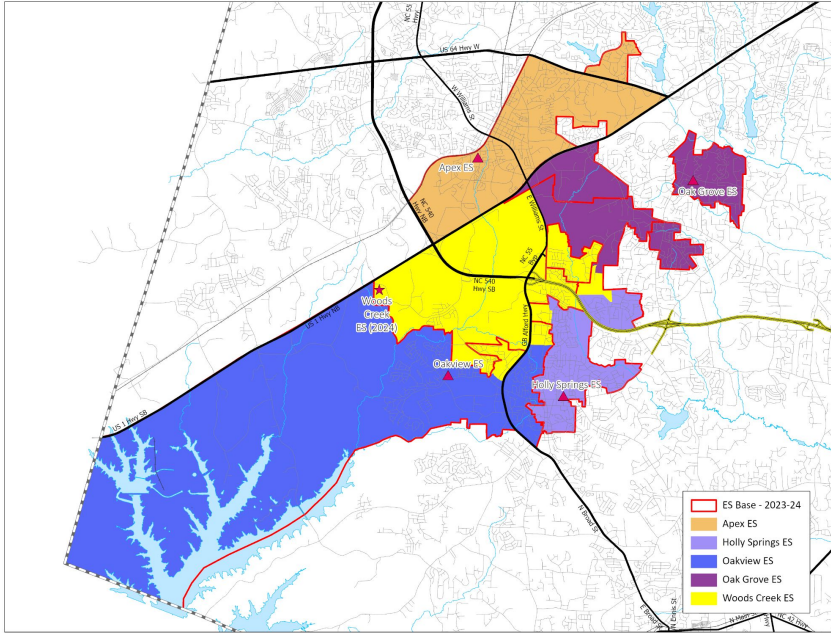
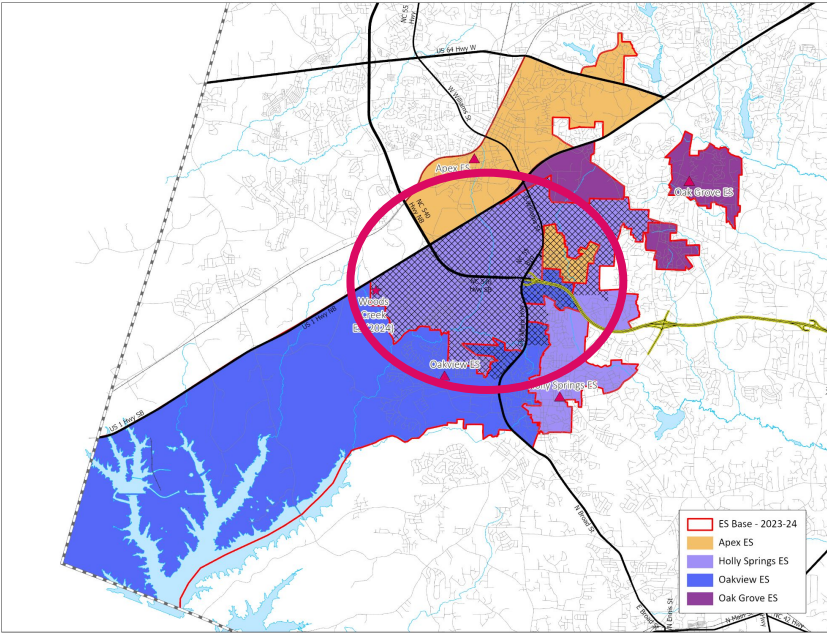
# New School – Woods Creek ES (opening July 2024)

- Calendar Recommendation:
  - Multi-track Year-round Calendar (Capacity = 924)
- Impacted Schools:
  - Apex Elementary, Holly Springs Elementary & Oakview Elementary

2023-24 Base School	Calendar	Capacity w/ Trailers	2024-25 Projected Utilization w/ Trailers
Apex ES	T	588	110%
Holly Springs ES	M-T	876	111%
Oakview ES	T	736	138%

- M-T – Multi-Track Year-Round Calendar
- S-T – Single Track Year-Round Calendar
- T – Traditional Calendar
- Util = Utilization based on building capacity, updated March 2023
- Util w/ Trl = Utilization with Trailers

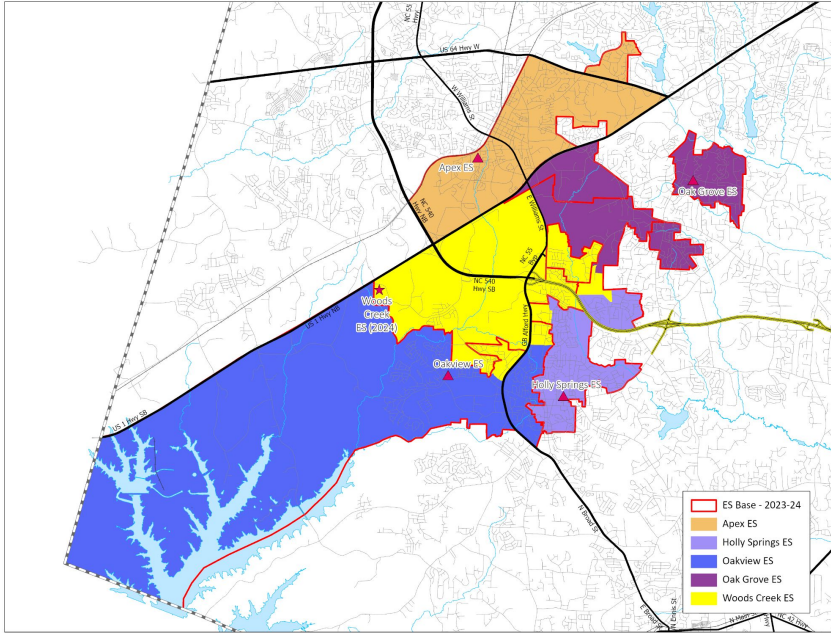
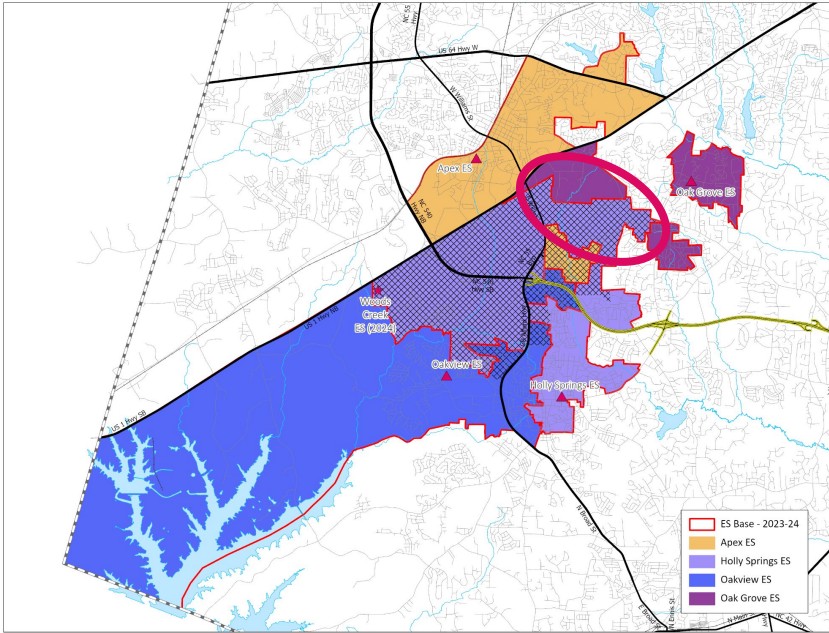
# New School – Woods Creek ES



Impacted Areas: 

Proposed Base Areas

# Existing School – Oak Grove ES (from Holly Springs ES)



Impacted Areas: 

Proposed Base Areas

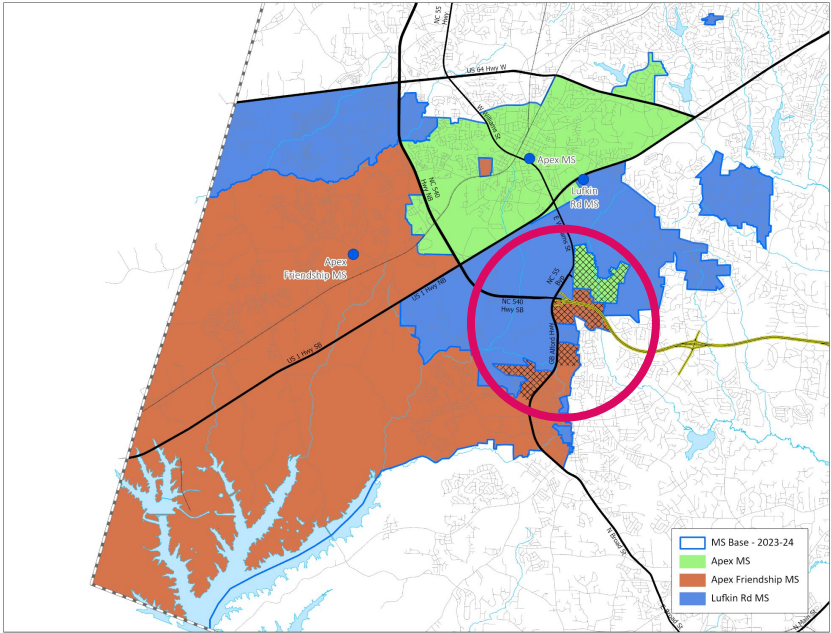
# New School – Woods Creek ES & Existing School – Oak Grove ES (from Holly Springs ES)

2023-24 Base School	Calendar	Capacity w/ Trailers	2024-25 Util w/ Trailers	2026-27 Util w/ Trailers
Apex ES	T	588	110%	108%
Holly Springs ES	M-T	876	111%	134%
Oakview ES	T	736	138%	156%
Oak Grove ES	M-T	716	78%	76%

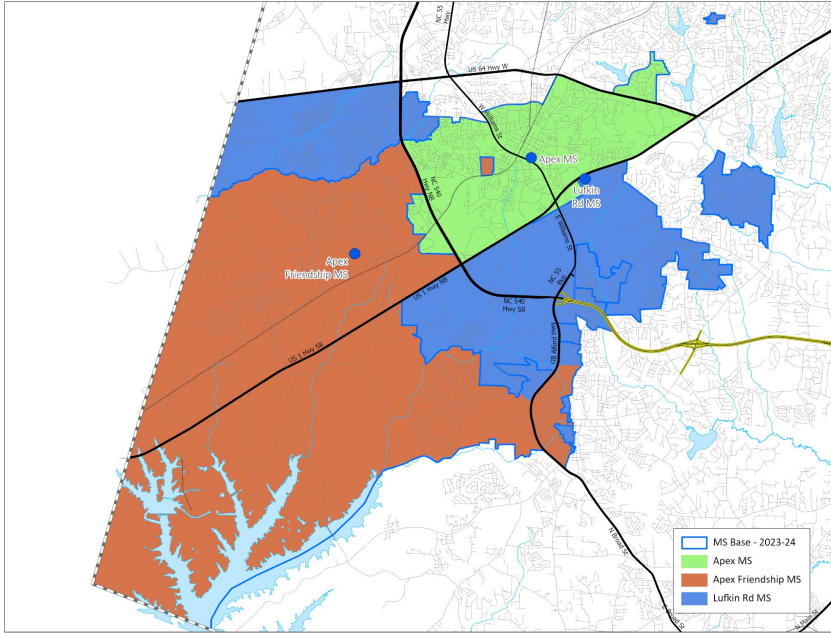
2024-25 Base School	Calendar	Capacity w/ Trailers	2024-25 Util w/ Trailers	2026-27 Util w/ Trailers
Apex ES	T	588	93%	93%
Holly Springs ES	M-T	876	83%	91%
Oakview ES	T	736	111%	128%
Oak Grove ES	M-T	716	84%	86%
Woods Creek ES	M-T	916	65%	75%

- M-T – Multi-Track Year-Round Calendar
- S-T – Single Track Year-Round Calendar
- T – Traditional Calendar
- Util = Utilization based on building capacity, updated March 2023
- Util w/ Trl = Utilization with Trailers

# Existing School – Lufkin Road MS (from Apex & Apex Friendship MS)



Impacted Areas:



Proposed Base Areas

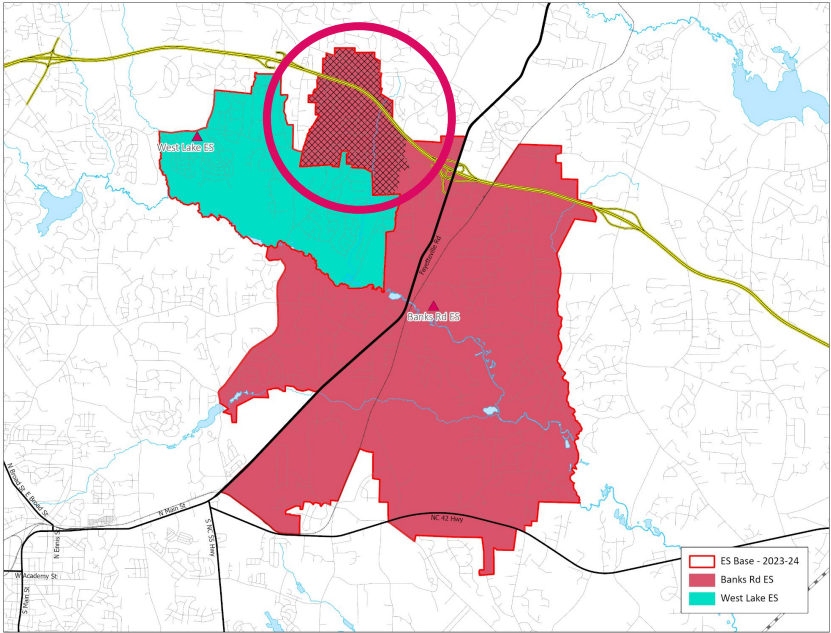
# Existing School – Lufkin Road MS (from Apex & Apex Friendship MS)

2023-24 Base School	Calendar	Capacity w/ Trailers	2024-25 Util w/ Trailers	2026-27 Util w/ Trailers
Apex MS	T	936	101%	105%
Apex Friendship MS	T	1248	117%	119%
Lufkin Road MS	M-T	1248	80%	88%

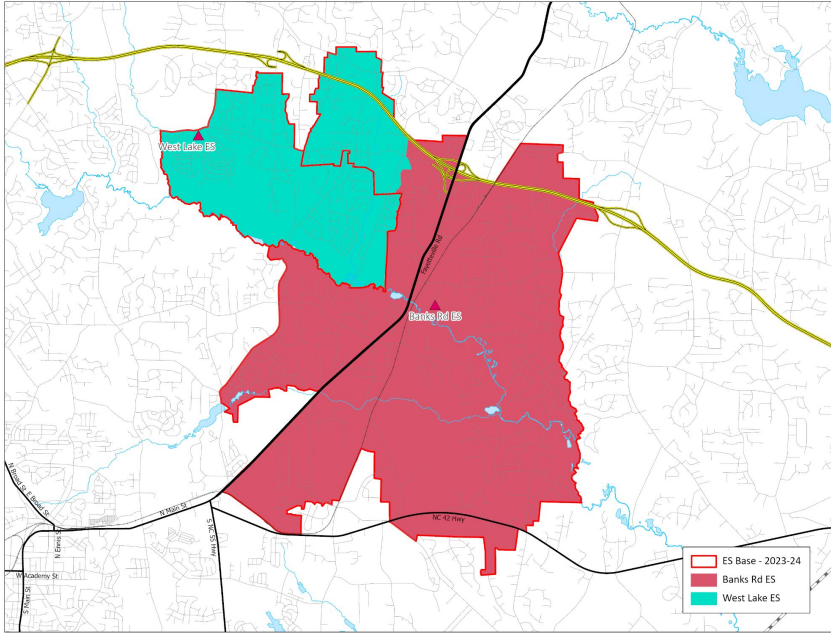
2023-24 Base School	Calendar	Capacity w/ Trailers	2024-25 Util w/ Trailers	2026-27 Util w/ Trailers
Apex MS	T	936	96%	99%
Apex Friendship MS	T	1248	109%	111%
Lufkin Road MS	M-T	1248	91%	101%

- M-T – Multi-Track Year-Round Calendar
- S-T – Single Track Year-Round Calendar
- T – Traditional Calendar
- Util = Utilization based on building capacity, updated March 2023
- Util w/ Trl = Utilization with Trailers

# Existing School – West Lake ES (from Banks Road ES)



Impacted Areas:



Proposed Base Areas

# Existing School – West Lake ES (from Banks Road ES)

2023-24 Base School	Calendar	Capacity w/ Trailers	2024-25 Util w/ Trailers	2026-27 Util w/ Trailers
Banks Road ES	S-T	616	127%	147%
West Lake ES	S-T	748	79%	81%

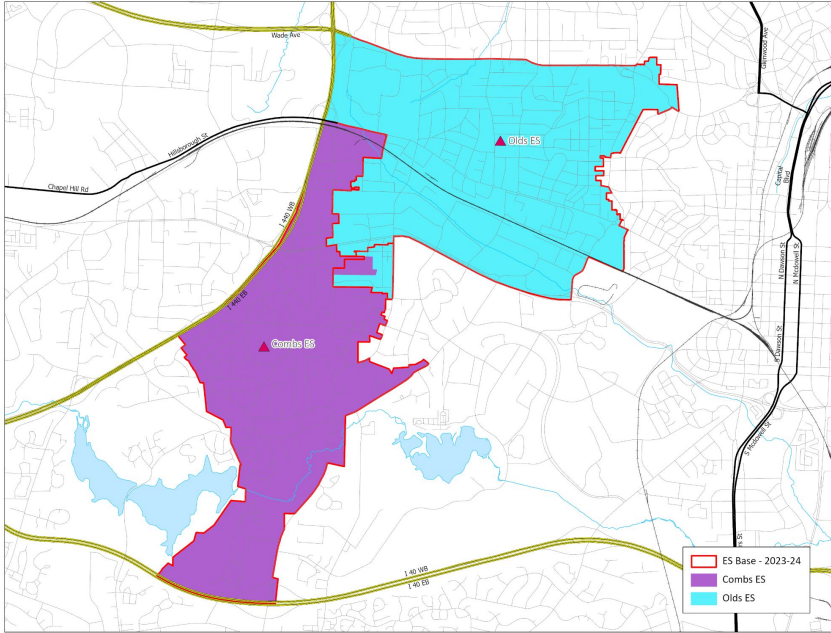
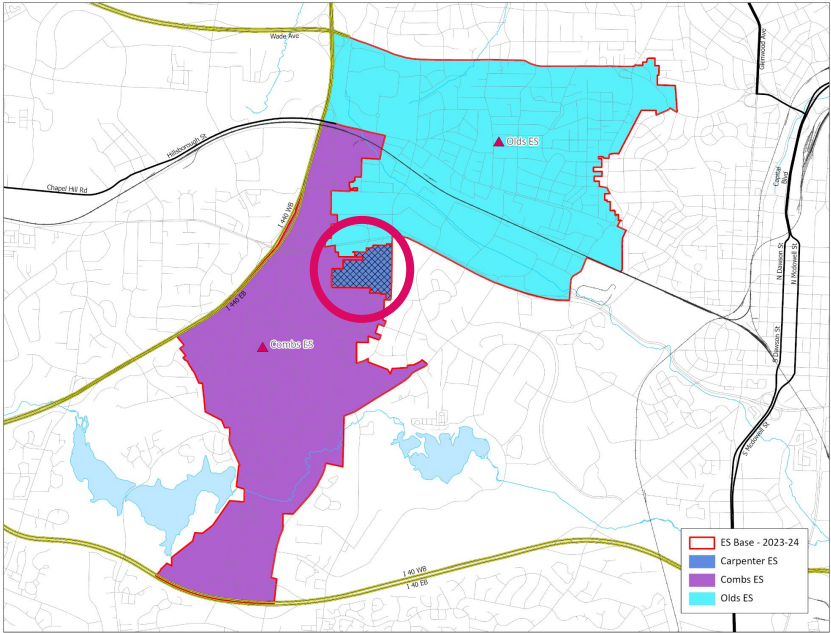
2024-25 Base School	Calendar	Capacity w/ Trailers	2024-25 Util w/ Trailers	2026-27 Util w/ Trailers
Banks Road ES	S-T	616	118%	138%
West Lake ES	S-T	748	87%	90%

- M-T – Multi-Track Year-Round Calendar
- S-T – Single Track Year-Round Calendar
- T – Traditional Calendar
- Util = Utilization based on building capacity, updated March 2023
- Util w/ Trl = Utilization with Trailers



# Central Area, Northern Area & Northeastern Area

# Existing School – Combs & Olds ES (from Carpenter ES)



Impacted Areas:



Proposed Base Areas

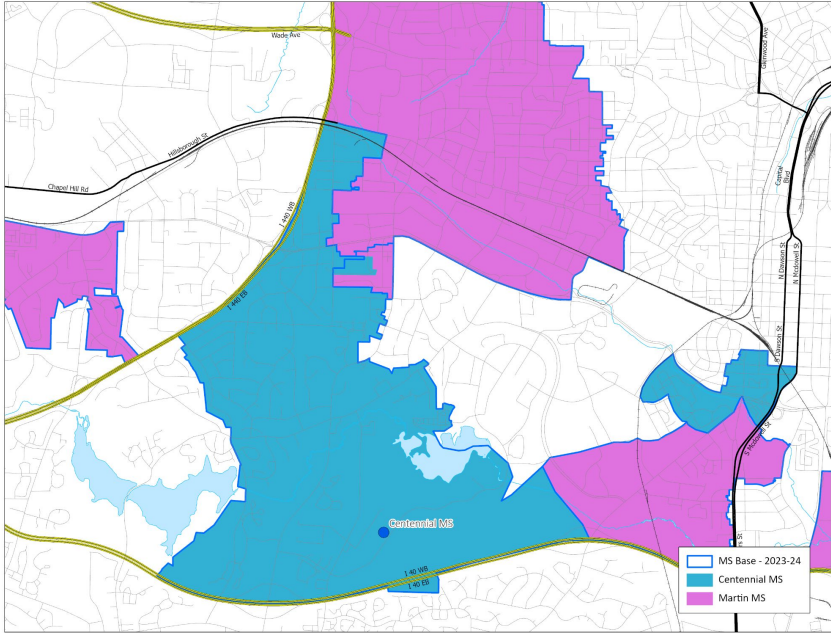
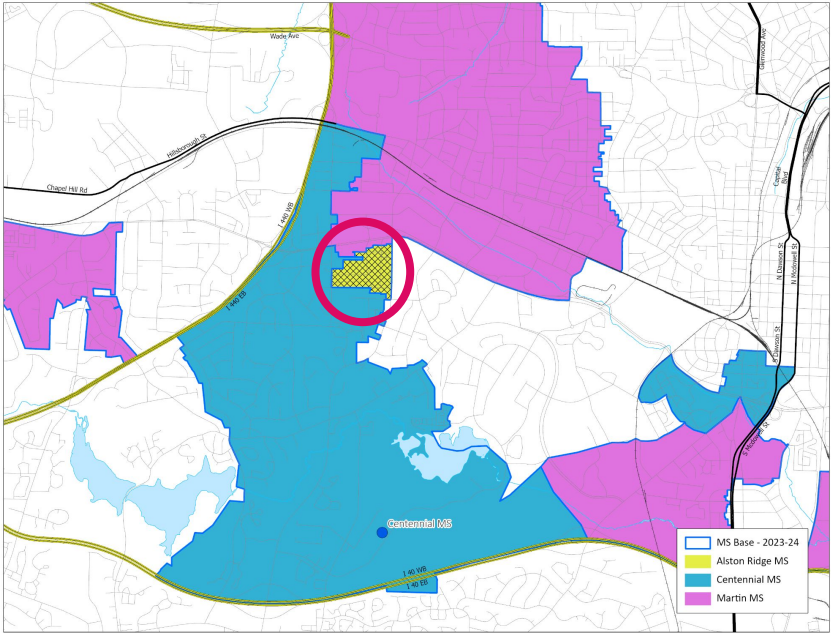
# Existing School – Combs & Olds ES (from Carpenter ES)

2023-24 Base School	Calendar	Capacity w/ Trailers	2024-25 Util w/ Trailers	2026-27 Util w/ Trailers
Carpenter ES	M-T	656	113%	118%
Combs ES	T	616	100%	98%
Olds ES	T	220	115%	112%

2024-25 Base School	Calendar	Capacity w/ Trailers	2024-25 Util w/ Trailers	2026-27 Util w/ Trailers
Carpenter ES	M-T	656	106%	112%
Combs ES	T	616	103%	101%
Olds ES	T	220	123%	119%

- M-T – Multi-Track Year-Round Calendar
- S-T – Single Track Year-Round Calendar
- T – Traditional Calendar
- Util = Utilization based on building capacity, updated March 2023
- Util w/ Trl = Utilization with Trailers

# Existing School – Centennial & Martin MS (from Alston Ridge MS)



Impacted Areas: 

Proposed Base Areas

# Existing School – Centennial & Martin MS (from Alston Ridge MS)

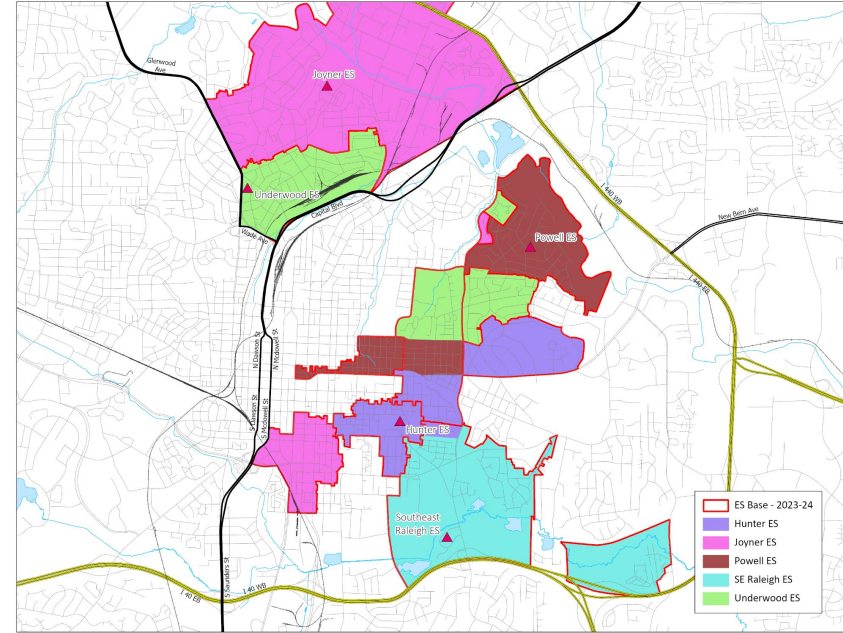
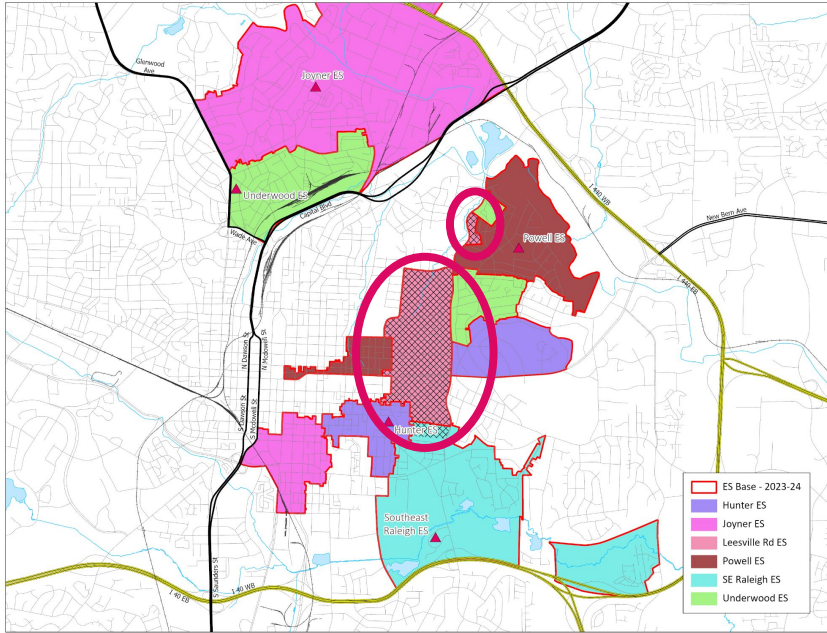
2023-24 Base School	Calendar	Capacity w/ Trailers	2024-25 Util w/ Trailers	2026-27 Util w/ Trailers
Alston Ridge MS	M-T	1560	105%	105%
Centennial MS	M	624	81%	83%
Martin MS	T	1014	101%	100%

2024-25 Base School	Calendar	Capacity w/ Trailers	2024-25 Util w/ Trailers	2026-27 Util w/ Trailers
Alston Ridge MS	M-T	1560	103%	104%
Centennial MS	M	624	84%	86%
Martin MS	T	1014	105%	105%

- M-T – Multi-Track Year-Round Calendar
- S-T – Single Track Year-Round Calendar
- T – Traditional Calendar
- Util = Utilization based on building capacity, updated March 2023
- Util w/ Trl = Utilization with Trailers

*Centennial MS is also impacted by another assignment change  
Martin MS is also impacted by another assignment change*

# Existing School – Hunter, Joyner, Powell & Underwood ES (from Leesville Road & Southeast Raleigh ES)



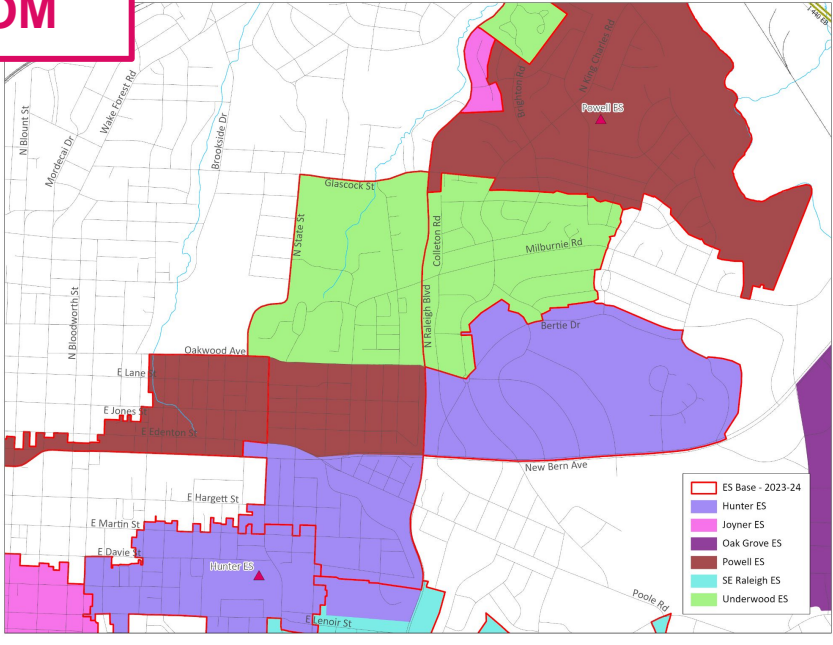
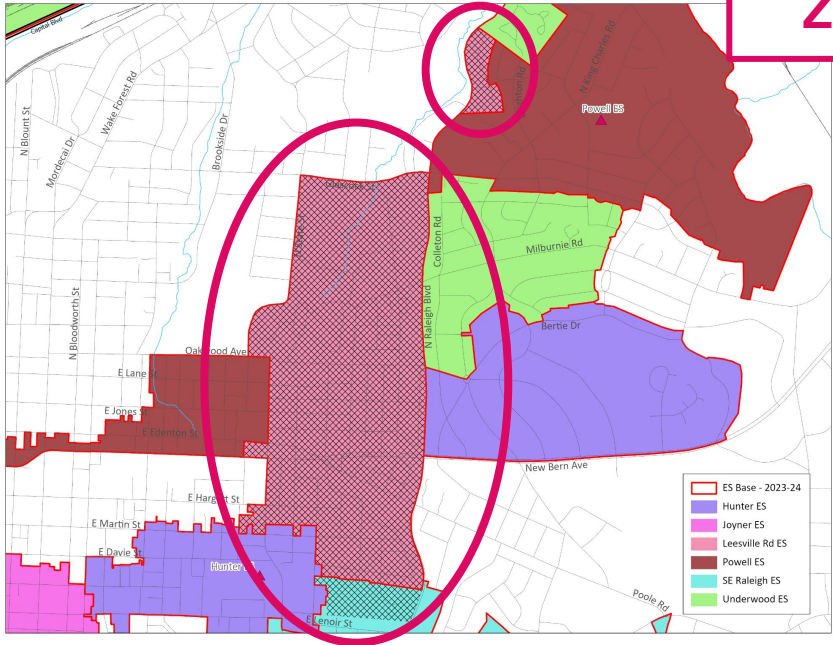
Impacted Areas:



Proposed Base Areas

# Existing School – Hunter, Joyner, Powell & Underwood ES (from Leesville Road & Southeast Raleigh ES)

ZOOM



Impacted Areas: 

Proposed Base Areas

# Existing School – Hunter, Joyner, Powell & Underwood ES (from Leesville Road & Southeast Raleigh ES)

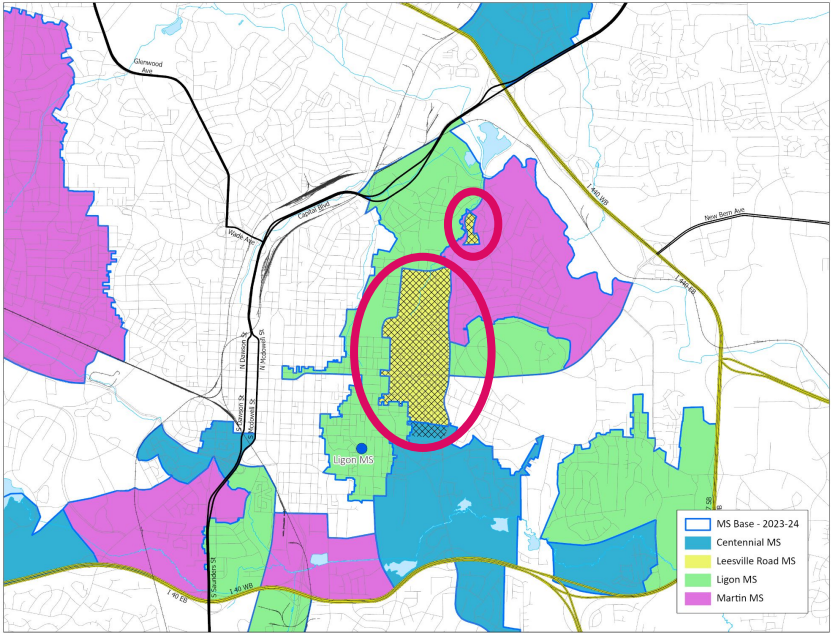
2023-24 Base School	Calendar	Capacity w/ Trailers	2024-25 Util w/ Trailers	2026-27 Util w/ Trailers
Hunter ES	T	628	103%	104%
Joyner ES	T	550	92%	91%
Leesville Rd ES	T	728	78%	81%
Powell ES	T	308	89%	88%
Southeast Raleigh ES	T	410	94%	93%
Underwood ES	T	410	100%	98%

2024-25 Base School	Calendar	Capacity w/ Trailers	2024-25 Util w/ Trailers	2026-27 Util w/ Trailers
Hunter ES	T	628	106%	107%
Joyner ES	T	550	100%	98%
Leesville Rd ES	T	728	76%	78%
Powell ES	T	308	93%	94%
Southeast Raleigh ES	T	410	94%	93%
Underwood ES	T	410	106%	105%

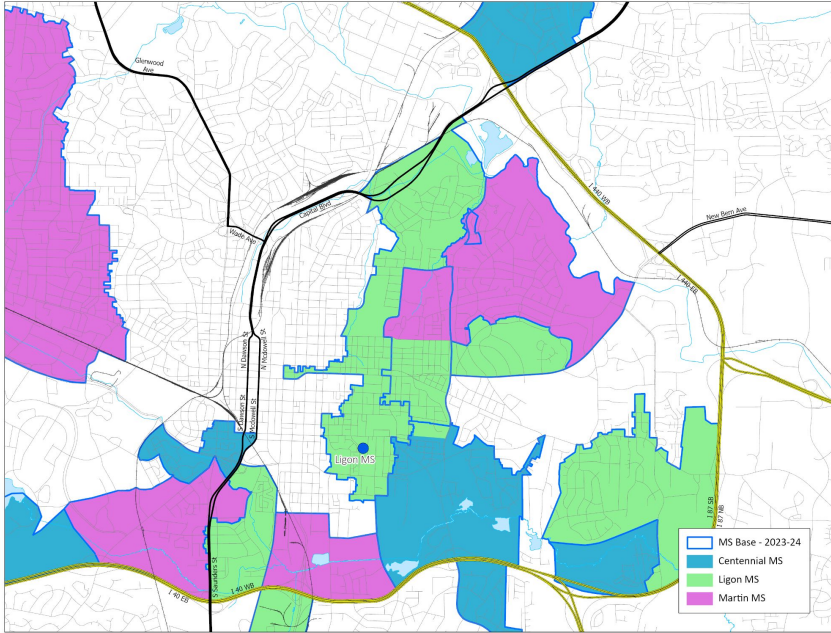
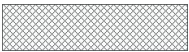
- M-T – Multi-Track Year-Round Calendar
- S-T – Single Track Year-Round Calendar
- T – Traditional Calendar
- Util = Utilization based on building capacity, updated March 2023
- Util w/ Trl = Utilization with Trailers

*Leesville Road ES is also impacted by another assignment change*

# Existing School – Ligon & Martin MS (from Centennial & Leesville Road MS)



Impacted Areas:



Proposed Base Areas

# Existing School – Ligon & Martin MS (from Centennial & Leesville Road MS)

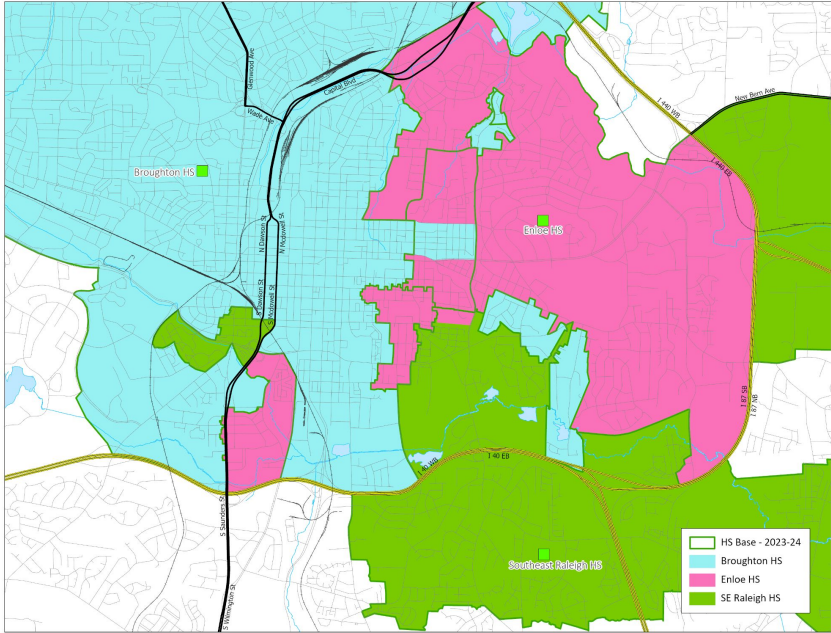
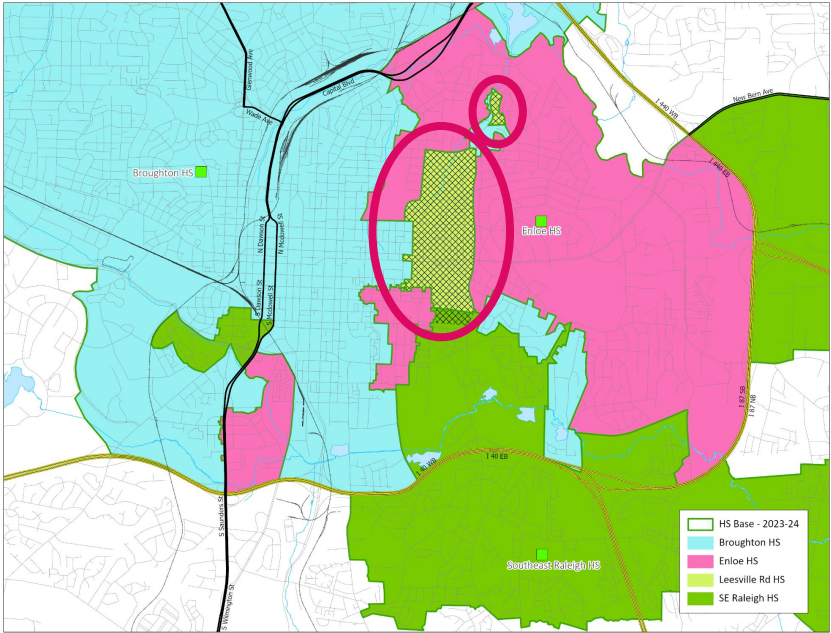
2023-24 Base School	Calendar	Capacity w/ Trailers	2024-25 Util w/ Trailers	2026-27 Util w/ Trailers
Centennial MS	M	624	81%	83%
Leesville Road MS	T	1222	66%	66%
Ligon MS	T	1014	92%	94%
Martin MS	T	1014	101%	100%

2024-25 Base School	Calendar	Capacity w/ Trailers	2024-25 Util w/ Trailers	2026-27 Util w/ Trailers
Centennial MS	M	624	84%	86%
Leesville Road MS	T	1222	62%	61%
Ligon MS	T	1014	94%	96%
Martin MS	T	1014	105%	105%

- M-T – Multi-Track Year-Round Calendar
- S-T – Single Track Year-Round Calendar
- T – Traditional Calendar
- Util = Utilization based on building capacity, updated March 2023
- Util w/ Trl = Utilization with Trailers

*Centennial MS is also impacted by another assignment change  
Martin MS is also impacted by another assignment change*

# Existing School – Broughton & Enloe HS (from Leesville Road & Southeast Raleigh HS)



Impacted Areas:



Proposed Base Areas

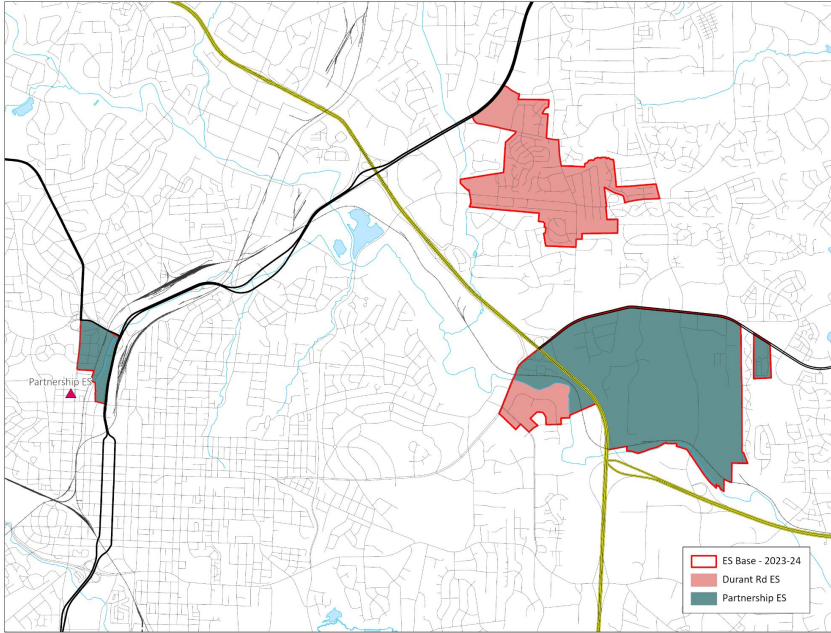
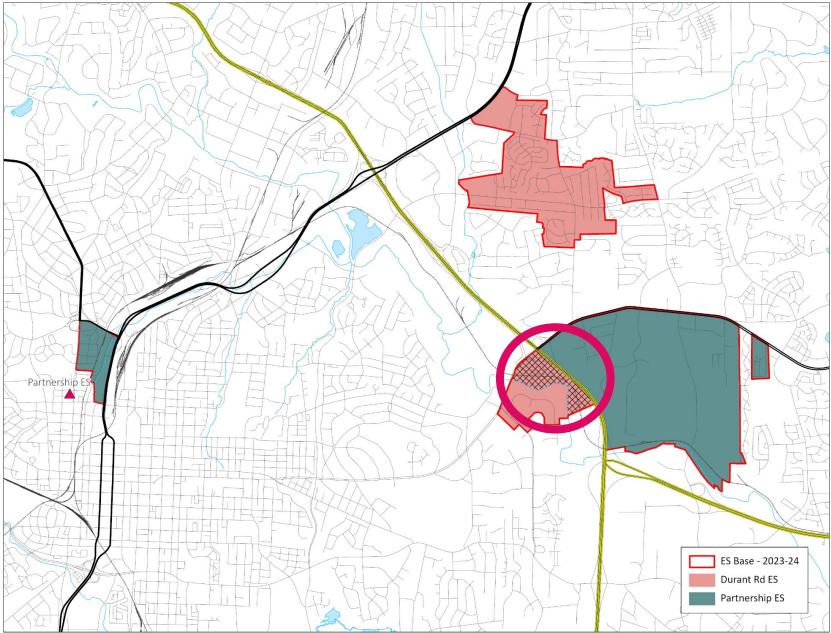
# Existing School – Broughton & Enloe HS (from Leesville Road & Southeast Raleigh HS)

2023-24 Base School	Calendar	Capacity w/ Trailers	2024-25 Util w/ Trailers	2026-27 Util w/ Trailers
Broughton HS	T	2064	100%	98%
Enloe HS	T	2415	108%	107%
Leesville Road HS	T	2477	102%	99%
Southeast Raleigh HS	M	1967	85%	85%

2024-25 Base School	Calendar	Capacity w/ Trailers	2024-25 Util w/ Trailers	2026-27 Util w/ Trailers
Broughton HS	T	2064	102%	101%
Enloe HS	T	2415	110%	109%
Leesville Road HS	T	2477	98%	95%
Southeast Raleigh HS	M	1967	85%	85%

- M-T – Multi-Track Year-Round Calendar
- S-T – Single Track Year-Round Calendar
- T – Traditional Calendar
- Util = Utilization based on building capacity, updated March 2023
- Util w/ Trl = Utilization with Trailers

# Existing School – Partnership ES (from Durant Road ES)



Impacted Areas:



Proposed Base Areas

# Existing School – Partnership ES (from Durant Road ES)

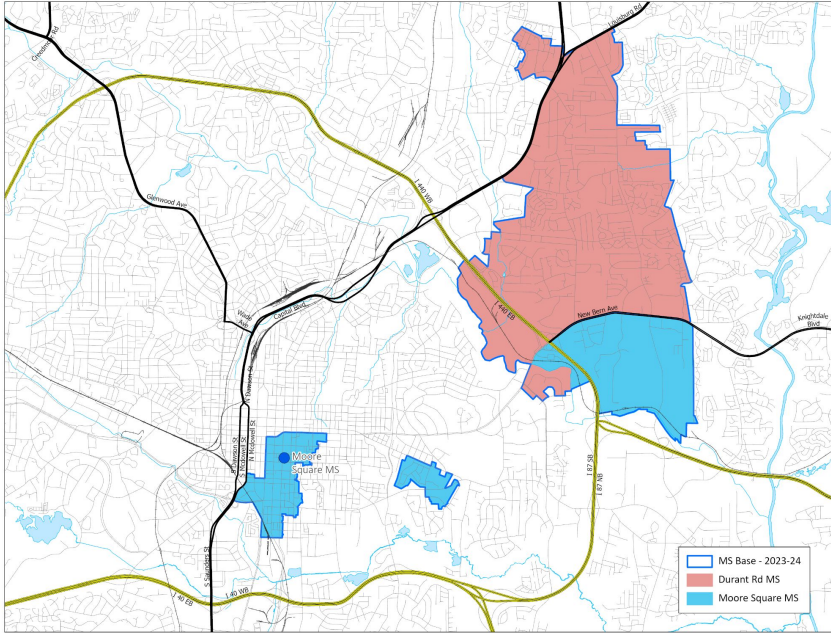
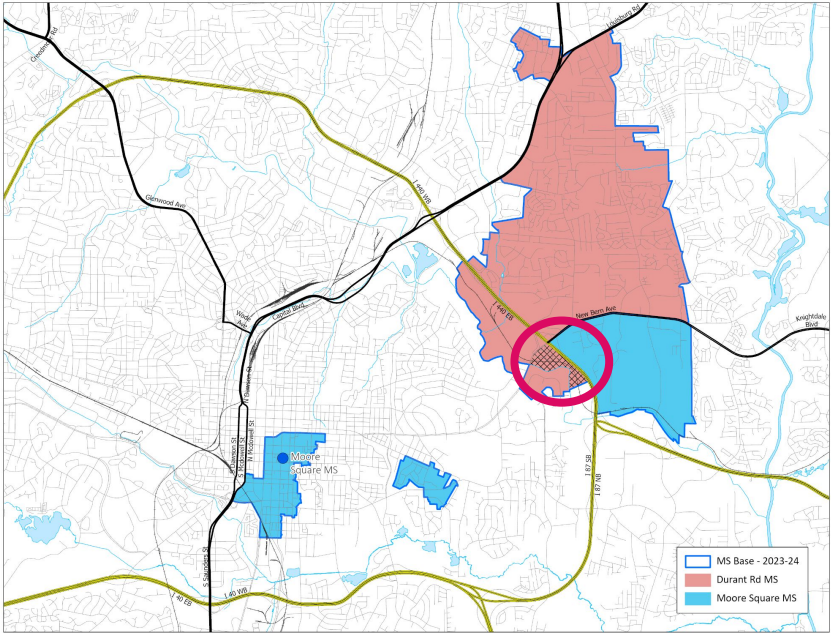
2023-24 Base School	Calendar	Capacity w/ Trailers	2024-25 Util w/ Trailers	2026-27 Util w/ Trailers
Durant Road ES	S-T	768	74%	76%
Partnership ES	M	308	94%	103%

2024-25 Base School	Calendar	Capacity w/ Trailers	2024-25 Util w/ Trailers	2026-27 Util w/ Trailers
Durant Road ES	S-T	768	70%	74%
Partnership ES	M	308	111%	122%

- M-T – Multi-Track Year-Round Calendar
- S-T – Single Track Year-Round Calendar
- T – Traditional Calendar
- Util = Utilization based on building capacity, updated March 2023
- Util w/ Trl = Utilization with Trailers

*Durant Road ES is also impacted by another assignment change*

# Existing School – Moore Square MS (from Durant Road MS)



Impacted Areas: 

Proposed Base Areas

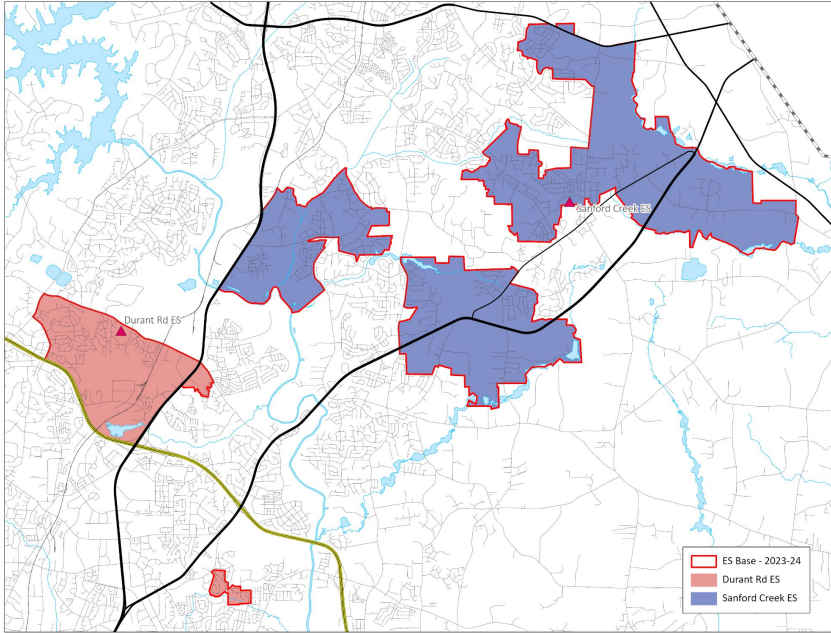
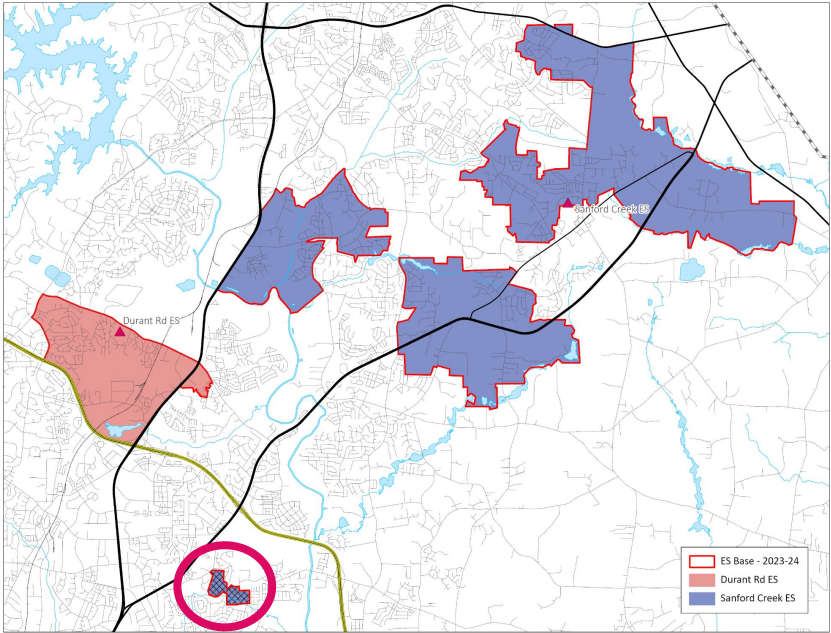
# Existing School – Moore Square MS (from Durant Road MS)

2023-24 Base School	Calendar	Capacity w/ Trailers	2024-25 Util w/ Trailers	2026-27 Util w/ Trailers
Durant Road MS	S-T	1144	62%	60%
Moore Square MS	M	624	98%	99%

2024-25 Base School	Calendar	Capacity w/ Trailers	2024-25 Util w/ Trailers	2026-27 Util w/ Trailers
Durant Road MS	S-T	1144	56%	55%
Moore Square MS	M	624	108%	109%

- M-T – Multi-Track Year-Round Calendar
- S-T – Single Track Year-Round Calendar
- T – Traditional Calendar
- Util = Utilization based on building capacity, updated March 2023
- Util w/ Trl = Utilization with Trailers

# Existing School – Durant Road ES (from Sanford Creek ES)



Impacted Areas:



Proposed Base Areas

# Existing School – Durant Road ES (from Sanford Creek ES)

2023-24 Base School	Calendar	Capacity w/ Trailers	2024-25 Util w/ Trailers	2026-27 Util w/ Trailers
Durant Road ES	S-T	768	74%	76%
Sanford Creek ES	M-T	618	104%	113%

2024-25 Base School	Calendar	Capacity w/ Trailers	2024-25 Util w/ Trailers	2026-27 Util w/ Trailers
Durant Road ES	S-T	768	70%	74%
Sanford Creek ES	M-T	618	99%	95%

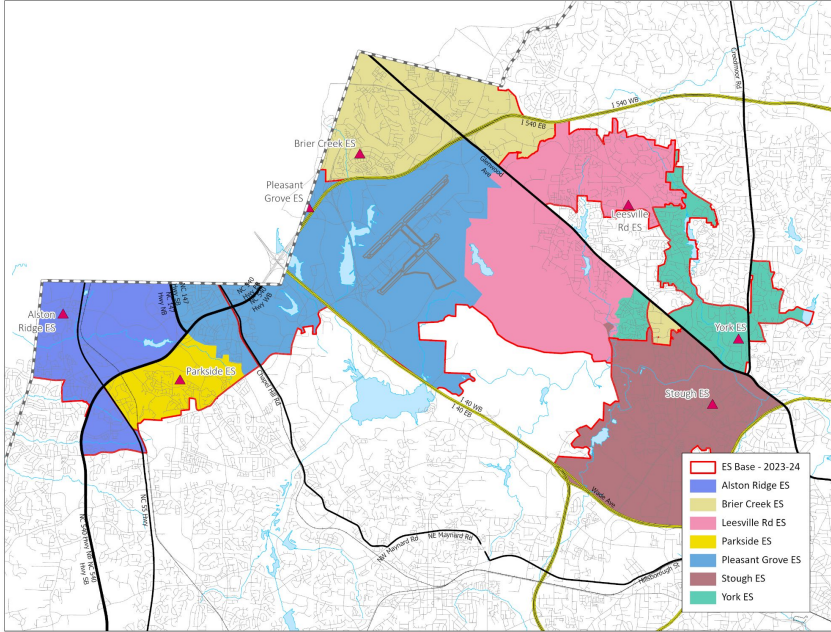
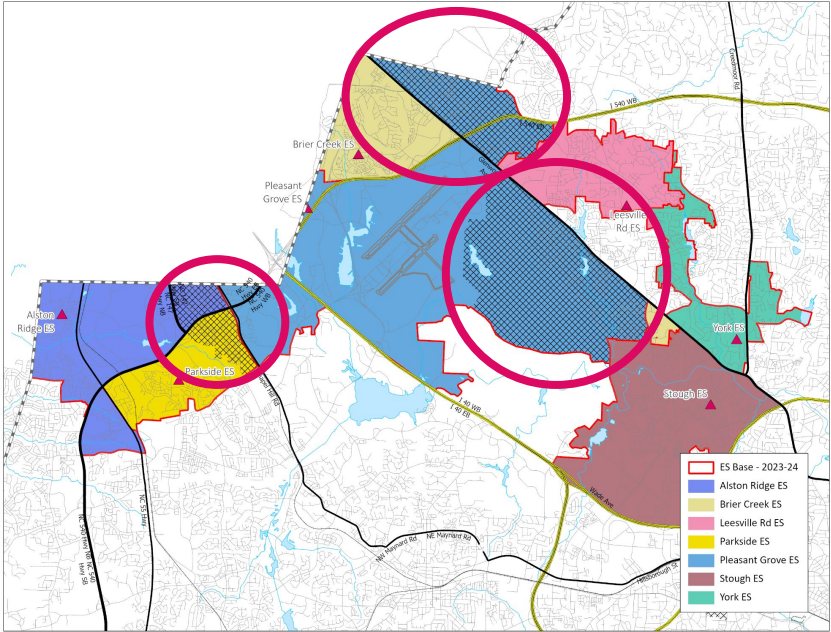
- M-T – Multi-Track Year-Round Calendar
- S-T – Single Track Year-Round Calendar
- T – Traditional Calendar
- Util = Utilization based on building capacity, updated March 2023
- Util w/ Trl = Utilization with Trailers

*Durant Road ES is also impacted by another assignment change*



# Northwestern Area

# Existing School – Pleasant Grove ES



Impacted Areas: 

Proposed Base Areas

# Existing School – Pleasant Grove ES

2023-24 Base School	Calendar	Capacity w/ Trailers	2024-25 Util w/ Trailers	2026-27 Util w/ Trailers
Alston Ridge ES	M-T	996	117%	115%
Brier Creek ES	M-T	736	80%	83%
Leesville Rd ES	T	728	78%	81%
Parkside ES	M-T	814	108%	121%
Pleasant Grove ES	T	616	79%	81%
Stough ES	T	508	110%	111%
York ES	T	616	73%	69%
2024-25 Base School	Calendar	Capacity w/ Trailers	2024-25 Util w/ Trailers	2026-27 Util w/ Trailers
Alston Ridge ES	M-T	996	93%	94%
Brier Creek ES	M-T	736	101%	104%
Leesville Rd ES	T	728	76%	78%
Parkside ES	M-T	814	82%	93%
Pleasant Grove ES	T	616	99%	98%
Stough ES	T	508	110%	111%
York ES	T	616	88%	85%

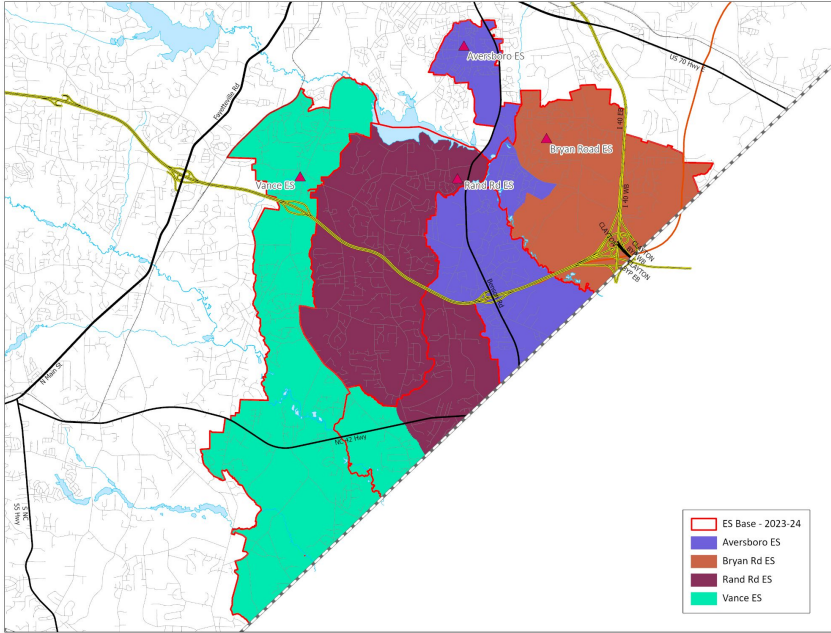
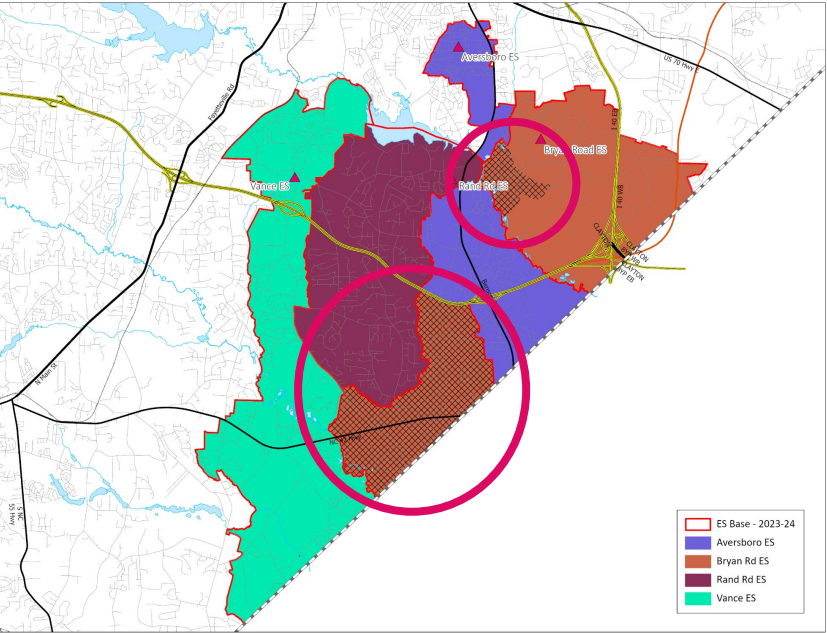
- M-T – Multi-Track Year-Round Calendar
- S-T – Single Track Year-Round Calendar
- T – Traditional Calendar
- Util = Utilization based on building capacity, updated March 2023
- Util w/ Trl = Utilization with Trailers

*Leesville Road ES is also impacted by another assignment change*

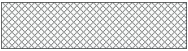


# Southeastern Area

# Existing School – Aversboro, Rand Road & Vance ES (from Bryan Road ES)



Impacted Areas:



Proposed Base Areas

# Existing School – Aversboro, Rand Road & Vance ES (from Bryan Road ES)

2023-24 Base School	Calendar	Capacity w/ Trailers	2024-25 Util w/ Trailers	2026-27 Util w/ Trailers
Aversboro ES	T	588	61%	65%
Bryan Road ES	T	616	121%	133%
Rand Road ES	S-T	550	70%	70%
Vance ES	S-T	428	99%	107%

2024-25 Base School	Calendar	Capacity w/ Trailers	2024-25 Util w/ Trailers	2026-27 Util w/ Trailers
Aversboro ES	T	588	83%	94%
Bryan Road ES	T	616	78%	82%
Rand Road ES	S-T	550	85%	85%
Vance ES	S-T	428	111%	119%

- M-T – Multi-Track Year-Round Calendar
- S-T – Single Track Year-Round Calendar
- T – Traditional Calendar
- Util = Utilization based on building capacity, updated March 2023
- Util w/ Trl = Utilization with Trailers



# Recommendations for Calendar Application Changes

# Elementary Calendar Application Changes

Current Base	Current Calendar Application School(s)	Proposed Calendar Application School
Adams	Reedy Creek	n/a
Alston Ridge	Green Hope, Hortons Creek**	Green Hope*
Ballentine	Fuquay-Varina	n/a
Carver	Forestville Road	n/a
Creech Road	Rand**, Timber Drive**	n/a
Davis Drive	Salem	n/a
Durant Road	Fox, Wakefield	n/a
East Garner	Creech	n/a
Farmington Woods	Adams	n/a
Forestville Road	Lockhart	n/a
Green Hope	Turner Creek	n/a
Heritage	Richland Creek, Wake Forest	Wake Forest*

\* based on address location

\*\*existing students retain transportation

# Elementary Calendar Application Changes

Current Base	Current Calendar Application School(s)	Proposed Calendar Application School
Hilburn	Brier Creek	n/a
Hortons Creek	Alston Ridge**	n/a
Jones Dairy	Richland Creek, Rolesville	n/a
Kingswood	Adams**	n/a
Laurel Park	Baucom, Davis Drive, Penny Road	Baucom*
Lockhart	Forestville, Knightdale	Knightdale*
River Bend	Harris Creek	n/a
Rogers Lane	Lake Myra	n/a
Timber Drive	Creech	n/a
Vance	Aversboro	n/a
Wilburn	Beaverdam	n/a
Yates Mill	Adams, Oak Grove	Oak Grove*

\* based on address location

\*\*existing students retain transportation

# Middle School Calendar Application Changes

Current Base	Current Calendar Application School(s)	Proposed Calendar Application School
Davis Drive	Salem	n/a
Dillard Drive	Lufkin Road, North Garner	Lufkin Road*
Durant Road	East Millbrook, West Millbrook	n/a
East Cary	Lufkin Road, Salem	Salem*
Hilburn Drive	Pine Hollow	n/a
Leesville Road	North Garner, Pine Hollow	Pine Hollow*
Lufkin Road	Apex, Apex Friendship, Dillard, East Cary, Holly Ridge	East Cary*
Rolesville	Wake Forest, Wendell	Wake Forest*
Salem	Apex, Davis Drive	Apex*
West Lake	Dillard Drive, Holly Ridge	Dillard Drive*

\* based on address location

\*\*existing students retain transportation



# Recommendations for Stability Rules for 2024-2025

# Stability Rules: Recommendations

## Opening a New School (Woods Creek ES)

- Students proposed to be assigned from an existing school (Apex, Holly Springs or Oakview Elementary) to the **NEW Woods Creek ES**
  - *Current students rising into 4th or 5th grade are eligible to remain assigned to their current school with transfer status (no transportation) through the terminal grade of the school*
    - *Rising Kindergarten, 1st, 2nd or 3rd siblings of eligible rising 4th and 5th grade students are eligible to join their sibling with transfer status (no transportation) through the terminal grade of the school*

***NOTE: Such requests must be submitted during the designated Stability Transfer Window***

# Stability Rules: Recommendations *(continued)*

## Changing an Existing School's Base Area (Pleasant Grove ES)

- Students proposed to be assigned from **Pleasant Grove ES** to an existing school (Brier Creek, Leesville Road or York Elementary), OR
- Students proposed to be assigned from an existing school (Alston Ridge ES or Parkside ES) to **Pleasant Grove ES**
  - *Current students rising into 4th or 5th grade are eligible to remain assigned to their current school with transfer status (no transportation) through the terminal grade of the school*
    - *Rising Kindergarten, 1st, 2nd or 3rd siblings of eligible rising 4th and 5th grade students are eligible to join their sibling with transfer status (no transportation) through the terminal grade of the school*

***NOTE: Such requests must be submitted during the designated Stability Transfer Window***

# Stability Rules: Recommendations *(continued)*

## All other Existing School to Existing School Changes

- *Current students impacted by assignment changes (excluding Woods Creek ES and Pleasant Grove ES) are eligible to remain assigned to their current school with transfer status (no transportation) through the terminal grade of the school*
  - *Rising Kindergarten, 6th or 9th grade siblings of eligible students are eligible to join their sibling with transfer status (no transportation) through the terminal grade of the school*

***NOTE: Such requests must be submitted during the designated Stability Transfer Window***



# Information & Updates

[www.wcpss.net/2024enrollmentproposal](http://www.wcpss.net/2024enrollmentproposal)



# Timeline / Next Steps

# Timeline 2024-2025 Enrollment Plan

## May 2, 2023 - Initial Planning Discussion [BoE Work Session]

- March-May - Staff hosts regional public engagement sessions
- May-June - Staff continues outreach (website updates, focus groups, etc.)
- May-June - Staff works on developing Draft 1

## June 20, 2023 - Update on Progress of Public Engagement [BoE Work Session]

- June-August - Staff continues outreach
- June-September - Staff continues work on developing Draft 1

## September 19, 2023 - Presentation of Draft 1 [BoE Work Session]

- September-October - Staff hosts public engagement activities
- October - Staff refines original draft

## October 17, 2023 - Presentation of Draft 2 [BoE Work Session]

- October - Staff hosts final public engagement session

## November 8, 2023 - Public Hearing [Special Called Session]

## November 21, 2023 - Presentation of Final Draft for Review & Approval [BoE Work Session & Meeting]

# Next Steps: Public Engagement Activities

## Draft #1 Public Engagement Activities

- September 19:
  - District website is updated with Draft 1 information ([wcpss.net/2024enrollmentproposal](http://wcpss.net/2024enrollmentproposal))
- September 19 - October 6:
  - Open ThoughtExchange: “What are your thoughts or questions about the proposed changes?” ([wcpss.net/draft1feedback](http://wcpss.net/draft1feedback))
- September 26 - October 5:
  - Host Regionally Focused Virtual Public Information Sessions
    - September 26, 6:00-7:30 pm - Northwestern Area
    - September 28, 6:00-7:30 pm - Central Area, Northern Area & Northeastern Area
    - October 4, 6:00-7:30 pm - Southern Area & Southwestern Area
    - October 5, 6:00-7:30 pm - Southeastern Area & General Overview



# Information & Updates

[www.wcpss.net/2024enrollmentproposal](http://www.wcpss.net/2024enrollmentproposal)



# Addendum

Board Policy 4150, Detail Maps, Data Reports

# Board Policy 4150: Drawing of School Attendance Areas

Student Achievement	Stability	Proximity	Operational Efficiency
<i>To the extent practicable...</i>			
<p>student populations at each school will provide an optimal opportunity for academic success for all students</p>	<p>a student rising into a terminal grade (5th, 8th, 12th) who is reassigned will be provided an opportunity to stay at the current school for at least one additional year, siblings will also be provided an opportunity to attend for at least the one year period</p>	<p>base school assignments will be within a reasonable distance of the student's home</p>	<p>assignments will optimize the use of school facilities and transportation resources</p>
<i>Factors for consideration include:</i>			
<ul style="list-style-type: none"> <li>• opportunity to apply to designate application schools</li> <li>• minimize high-concentrations of low-performing students</li> <li>• minimize high concentrations of students from low income families</li> </ul>	<ul style="list-style-type: none"> <li>• additional opportunities to remain at the current school, including for siblings, may be included in the annual student enrollment plan</li> <li>• Early College and Magnet application assignments are valid through the terminal grade of the school</li> </ul>	<ul style="list-style-type: none"> <li>• allow students living within the immediate vicinity of a school, defined by the assignment plan, to attend that school</li> <li>• minimize splitting of neighborhoods when developing base attendance areas</li> </ul>	<ul style="list-style-type: none"> <li>• minimize under-enrolled schools</li> <li>• minimize over-crowded schools</li> <li>• maximize transportation efficiencies</li> </ul>

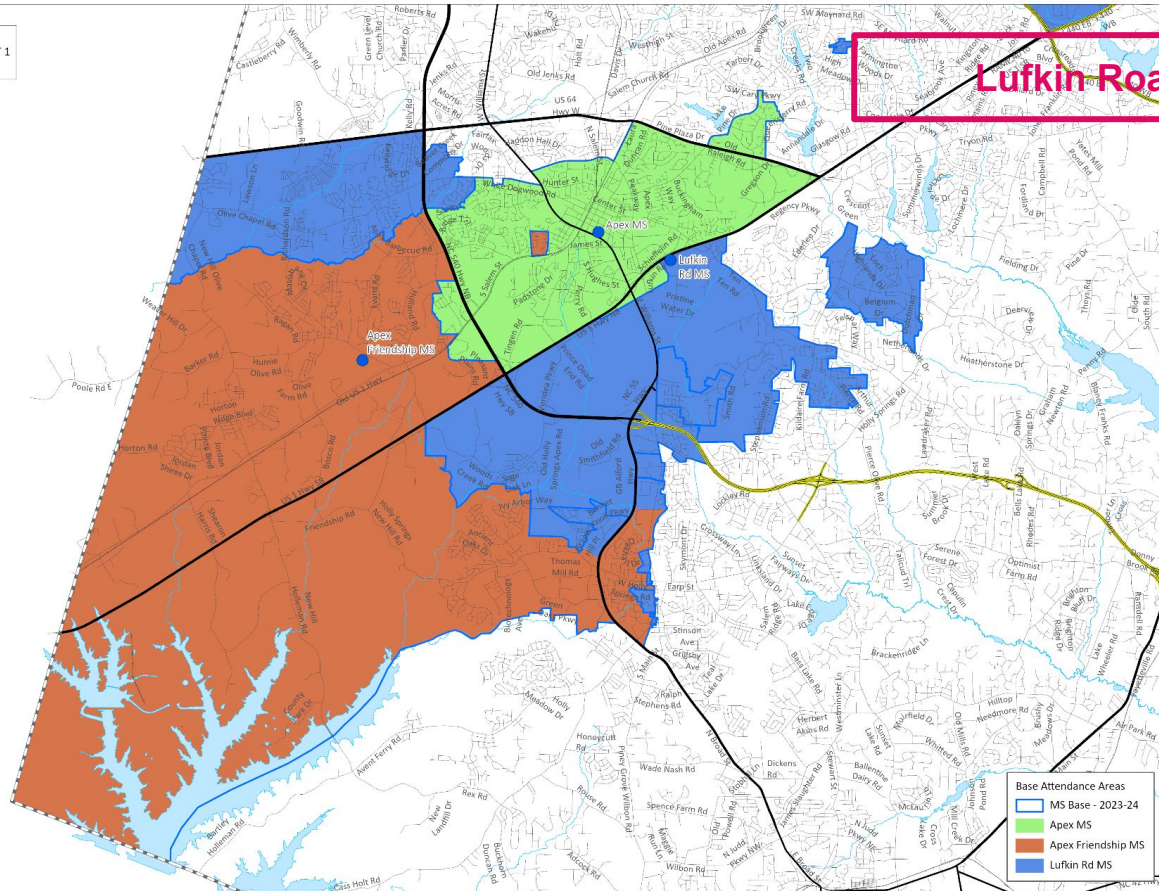


# Detail Maps



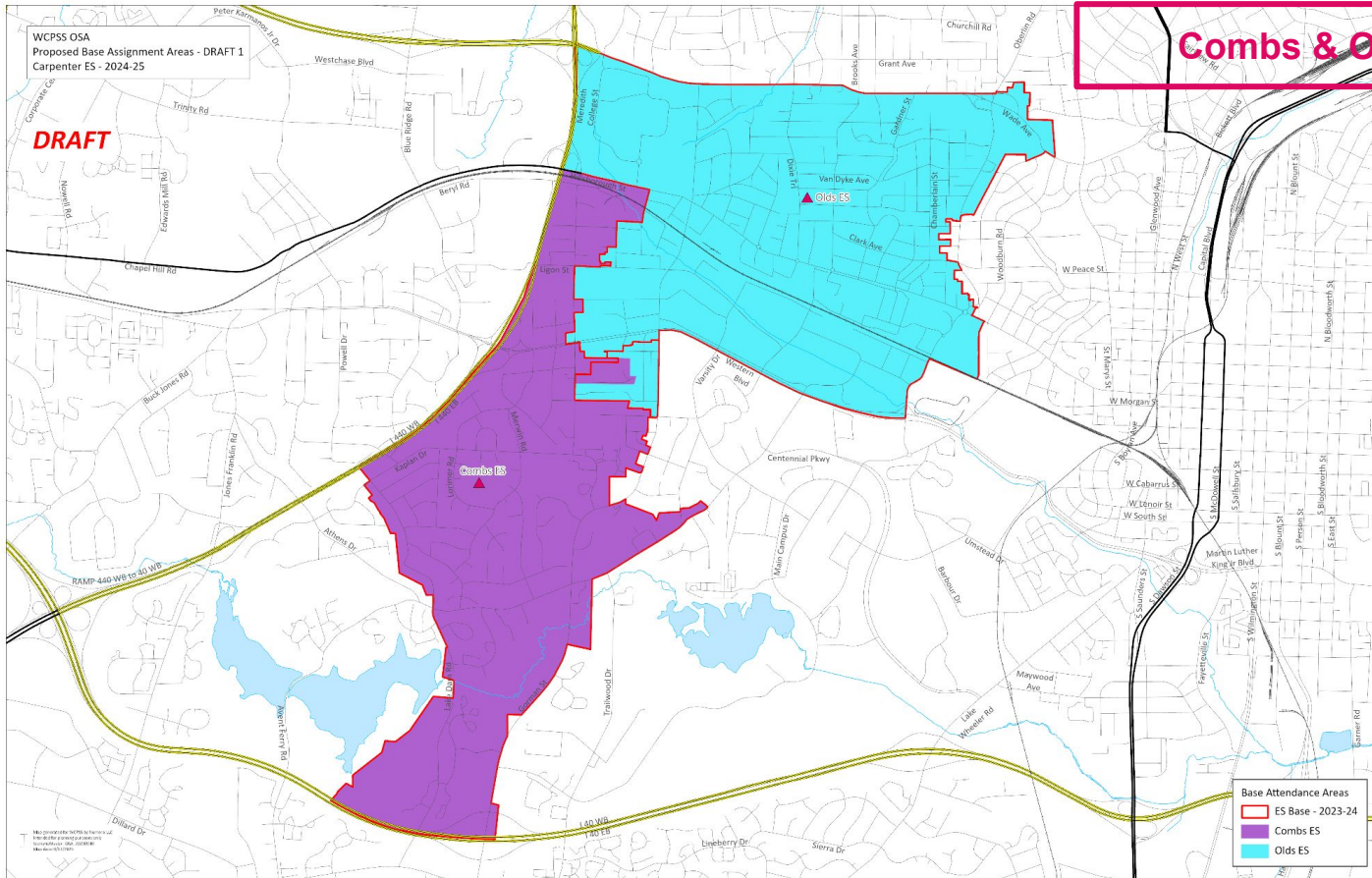
**DRAFT**

# Lufkin Road MS



Map provided for WCPSS by the Office of  
Geographic Information Systems  
on 11/15/2023 at 10:00 AM  
Map Date: 11/15/2023



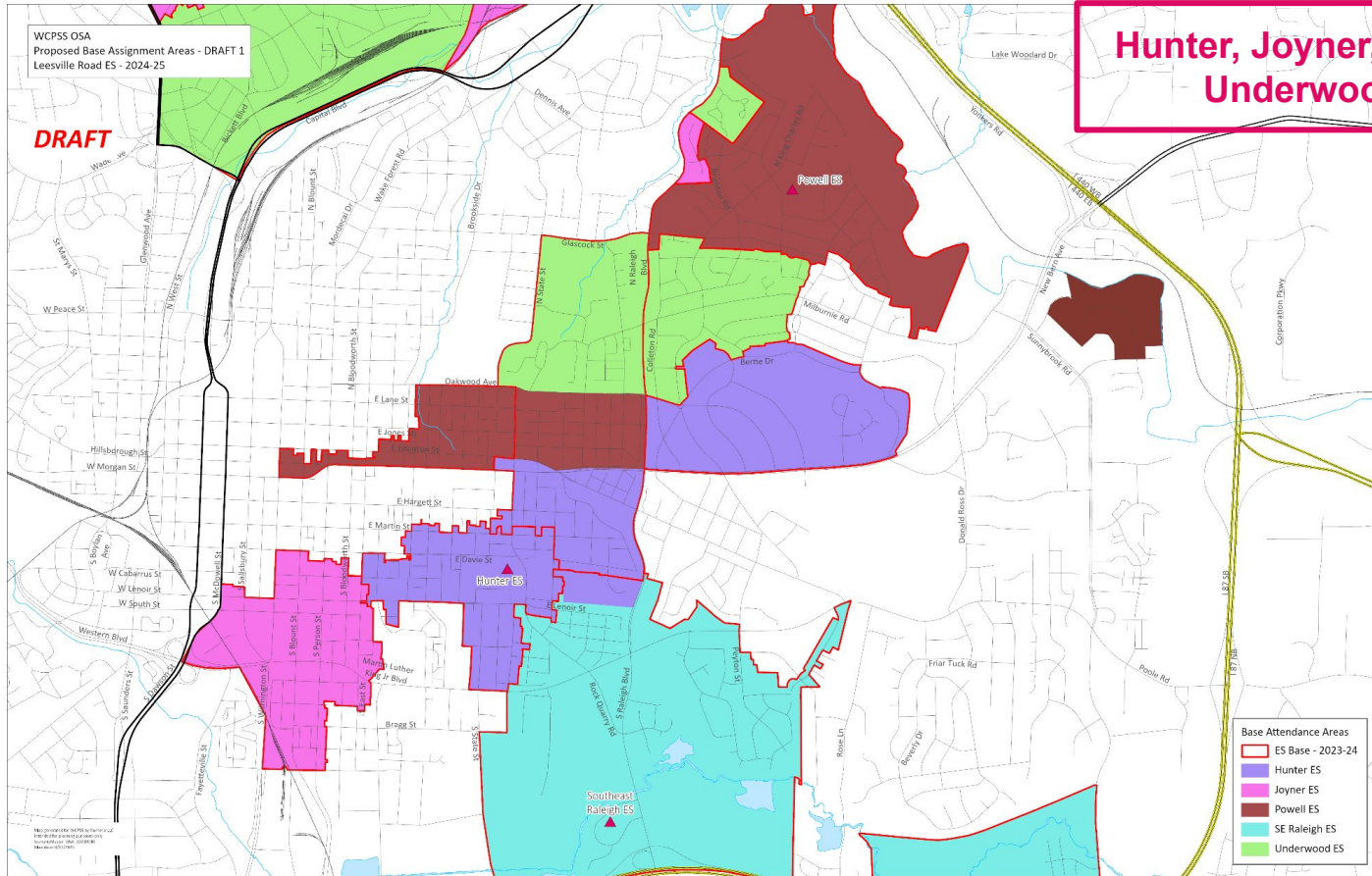




WCPSS OSA  
Proposed Base Assignment Areas - DRAFT 1  
Leesville Road ES - 2024-25

**DRAFT**

# Hunter, Joyner, Powell, & Underwood ES

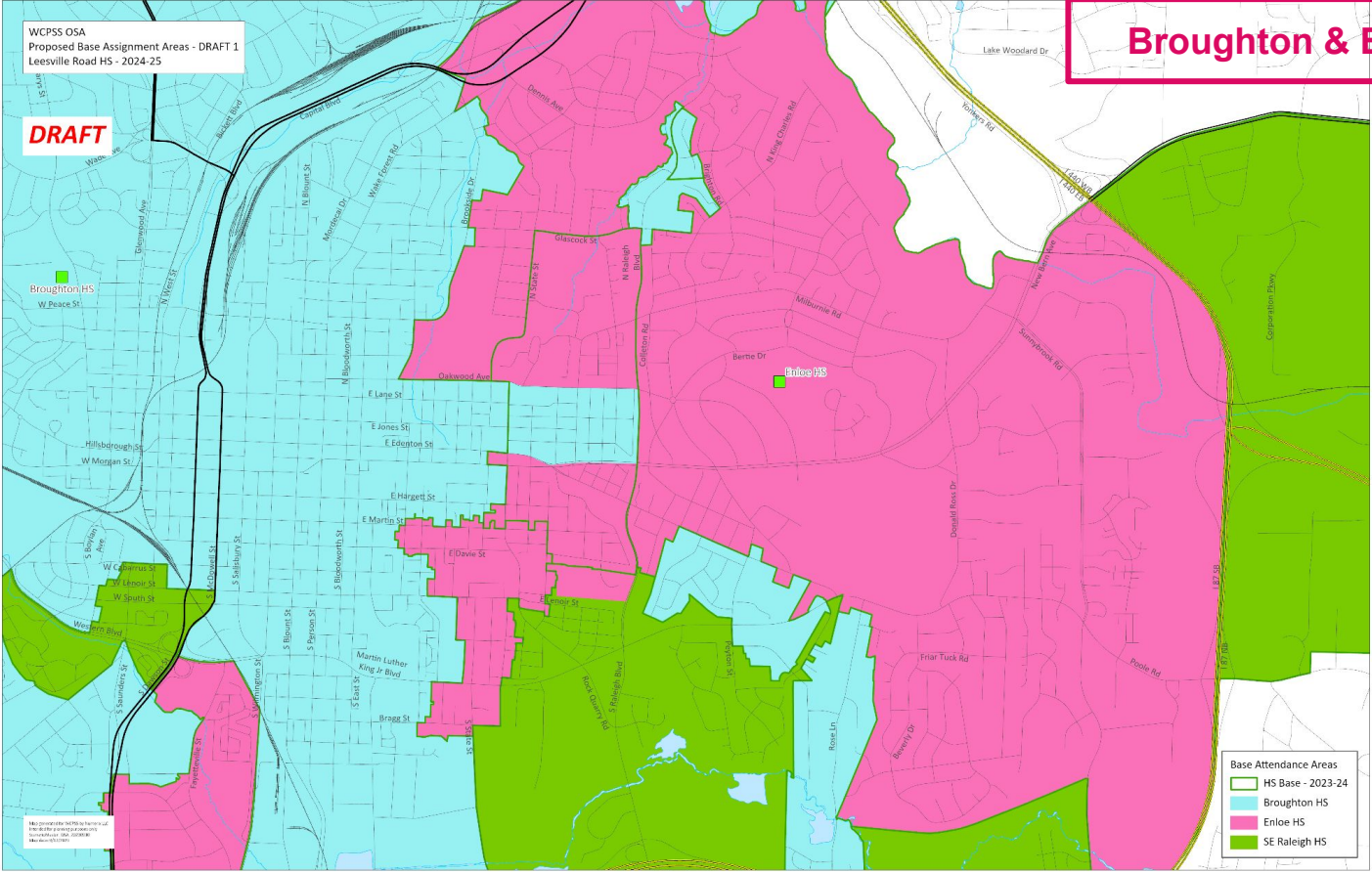




WCPSS OSA  
Proposed Base Assignment Areas - DRAFT 1  
Leesville Road HS - 2024-25

**DRAFT**

# Broughton & Enloe HS



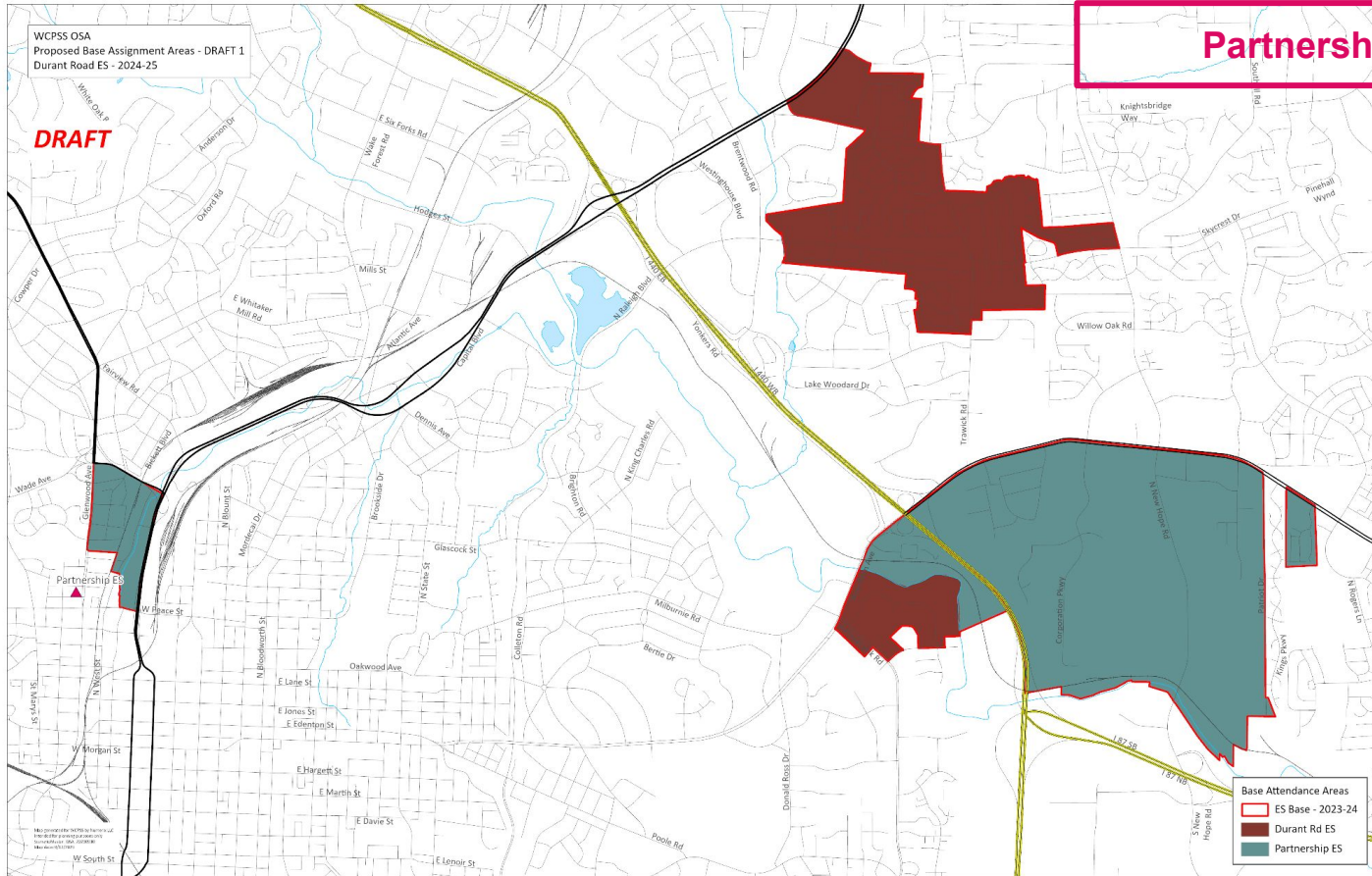
Map prepared for WCPSS by the Office of Information Systems  
Map Date: 08/20/2024  
Map Version: 001  
Map Scale: 1:10000

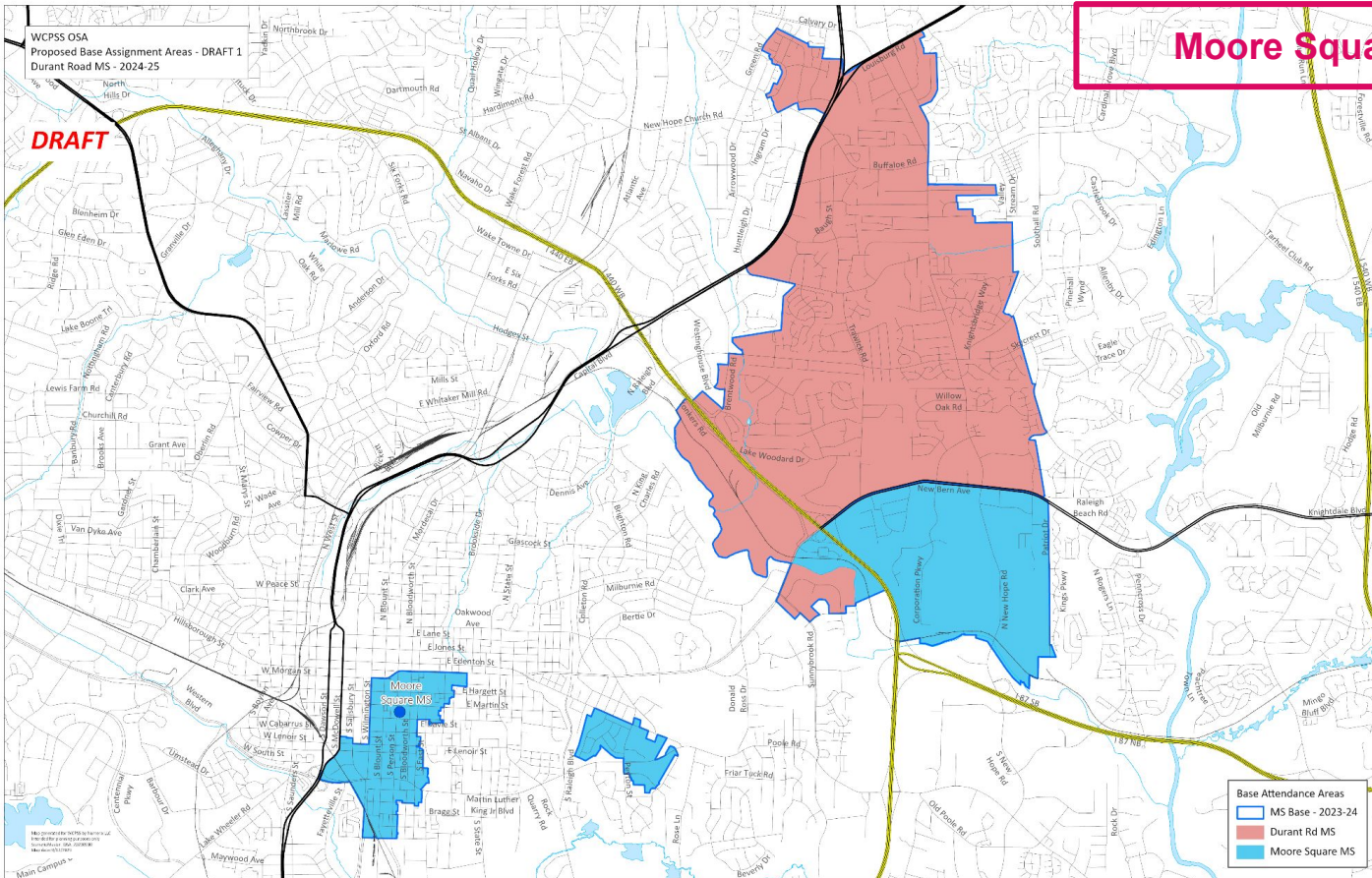
Base Attendance Areas  
HS Base - 2023-24  
Broughton HS  
Enloe HS  
SE Raleigh HS

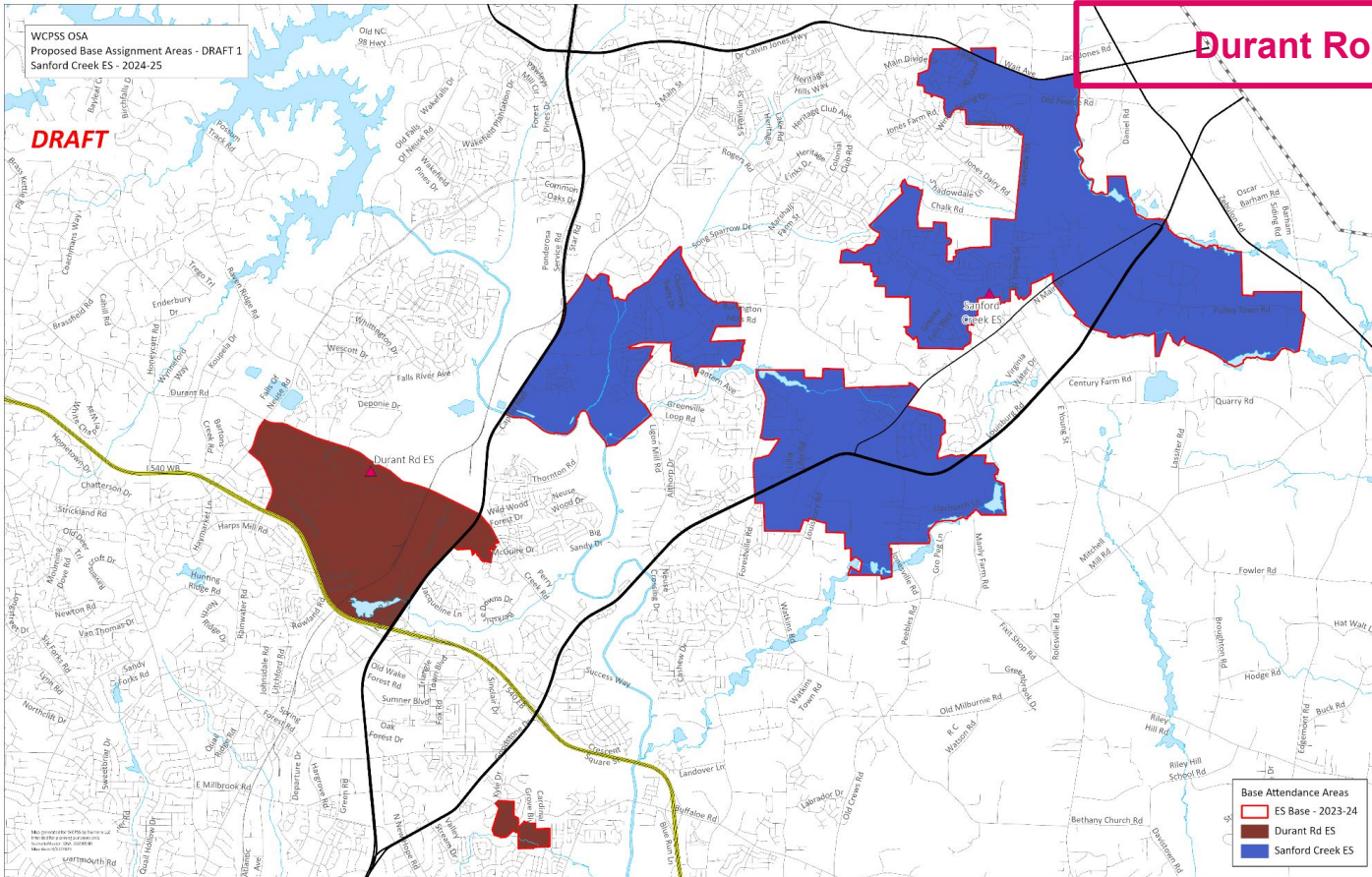
WCPSS OSA  
Proposed Base Assignment Areas - DRAFT 1  
Durant Road ES - 2024-25

**DRAFT**

# Partnership ES

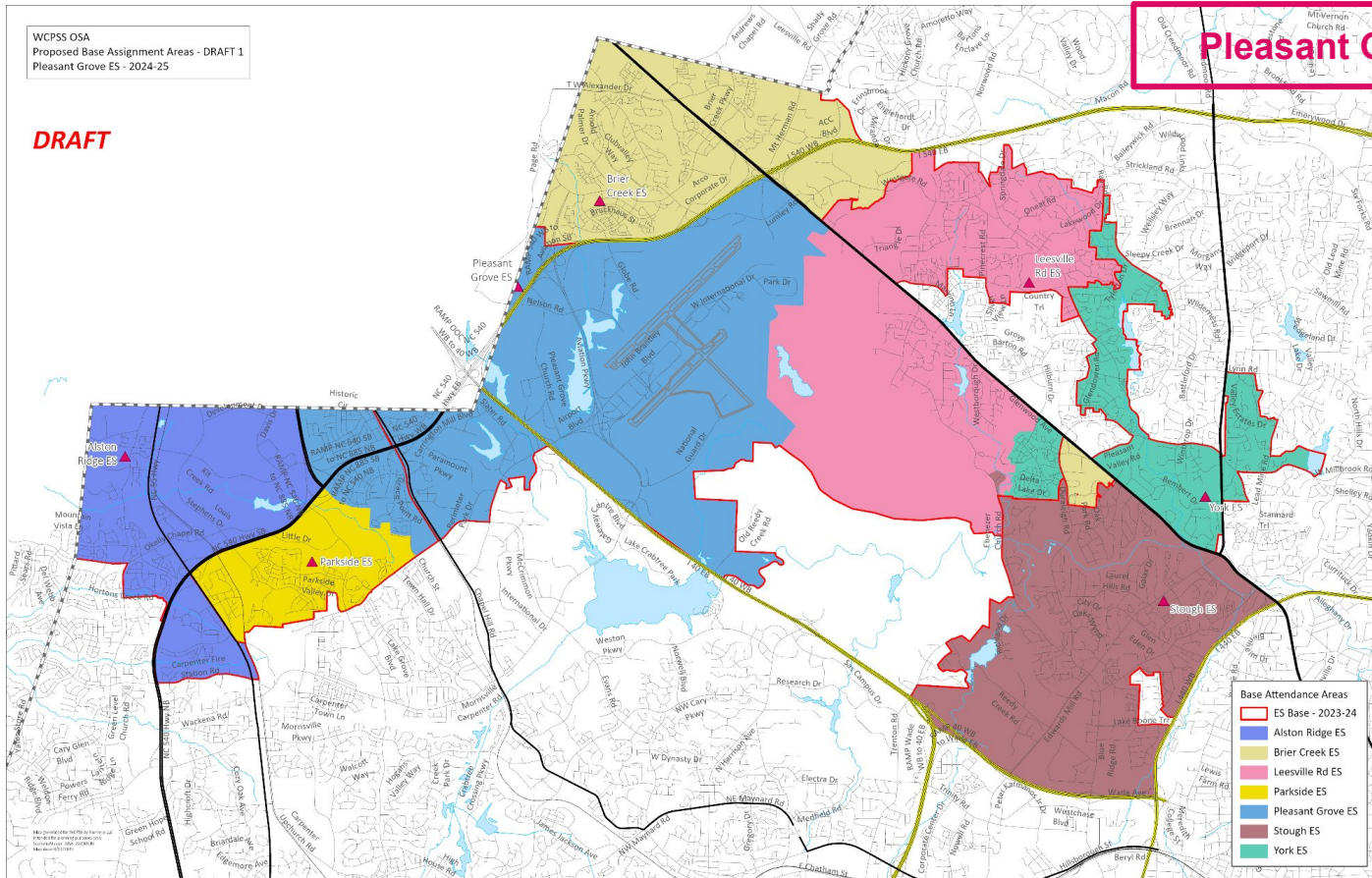






**DRAFT**

# Pleasant Grove ES





Included in the Agenda Attachments for the Work Session:

- 2023-2024 Base Population Report (pdf file)
  - data related to the number of students assigned as base to each school (indicates number of base students attending the base assigned school and number of base students attending other schools as application, transfer, etc.)
- 2023-2024 School Population Report (pdf file)
  - data related to the actual enrollment at each school (includes base, application, transfer, etc.)