

WCPSS 2024-2025 Enrollment Plan

Final Draft

A Multi-year Approach to Growth Management

Prepared by the Office of Student Assignment

Board of Education Work Session
November 21, 2023

Purpose

Staff is here today to share the final draft of the 2024-2025 Enrollment Plan.

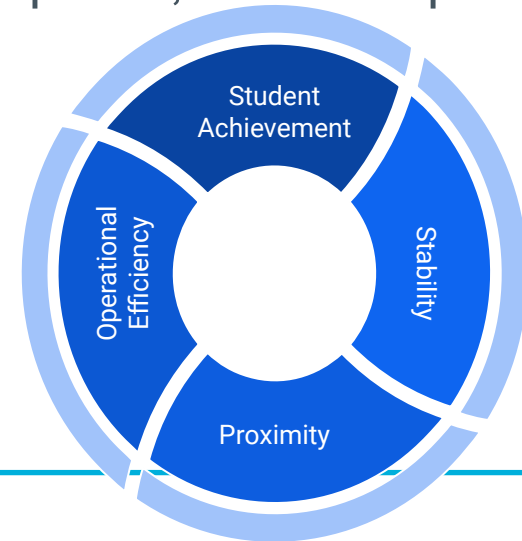
This year's plan focuses on four main objectives: opening the new Woods Creek Elementary, relieving capped and overcrowded schools, addressing historical assignment areas, and increasing transportation efficiency.

Our goal for today's meeting is to share updates from our recent public engagement activities and review the final set of recommendations included in the proposed enrollment plan. Additionally, we are requesting approval of the final version of the 2024-2025 Enrollment Plan at today's Board meeting.

WCPSS Board Policy 4150: School Assignment and Transfers

Section A. Drawing of School Attendance Areas

1. The assignment areas will be developed by balancing, to the extent reasonable, the goals and factors set forth below and will include target ranges, where appropriate, to accomplish these goals and factors:
 - a. **Student Achievement**
 - b. **Stability**
 - c. **Proximity**
 - d. **Operational Efficiency**



WCPSS Board Policy 4150: School Assignment and Transfers *(continued)*

- **Student Achievement**

- To the extent practicable, student populations at each school will provide an optimal opportunity for academic success for all students

- **Stability**

- To the extent practicable, a student rising into a terminal grade (5th, 8th, 12th) who is reassigned will be provided an opportunity to stay at the current school for at least one additional year, siblings will also be provided an opportunity to attend for at least the one year period

- **Proximity**

- To the extent practicable, base school assignments will be within a reasonable distance of the student's home

- **Operational Efficiency**

- To the extent practicable, assignments will optimize the use of school facilities and transportation resources

Overview

- **Updates**

- Public Engagement Progress - Draft #2
- Public Engagement Summary
- Review of Capped and Overcrowded Schools
- Review of Current Capital Improvement Plan (CIP)

- **Final Draft of 2024-2025 Enrollment Plan**


- Recommendations for Base Assignment Changes
- Recommendations for Calendar Application Changes
- Recommendations for Stability Rules for 2024-2025

- **Timeline / Next Steps**

- **Addendum**



Updates



The district website will be updated once the final plan is approved by the Board.

For more information and resources, visit:

www.wcpss.net/enroll



Public Engagement Progress - Draft #2



ThoughtExchange Results - Draft #2

ThoughtExchange: Participation (General Draft 2)

October 17 - November 3, 2023:

“Based on the information shared in Draft #2, what are your outstanding thoughts or questions?”



385
Participants



552
Thoughts



18,723
Ratings

Which of the following best describes your role?



318
Responses

%	Person Icon	Answer (Multi-select)
86%	(272)	Parent/Guardian
1%	(3)	Student
10%	(31)	Community Member
11%	(34)	Staff

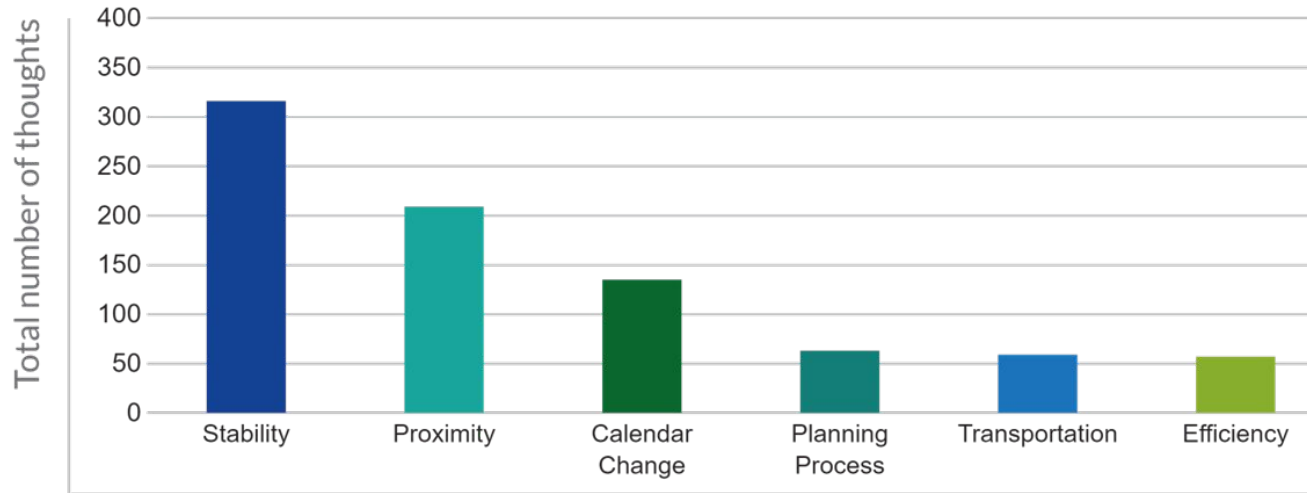
What is your race/ethnicity?

%	Person Icon	Answer
1%	(5)	American Indian or Alaskan Native
29%	(99)	Asian
5%	(17)	Black or African American
4%	(12)	Hispanic or Latino
0%	(1)	Native Hawaiian or Pacific Islander
4%	(15)	Two or More Races/Ethnicities
52%	(177)	White
4%	(14)	Other

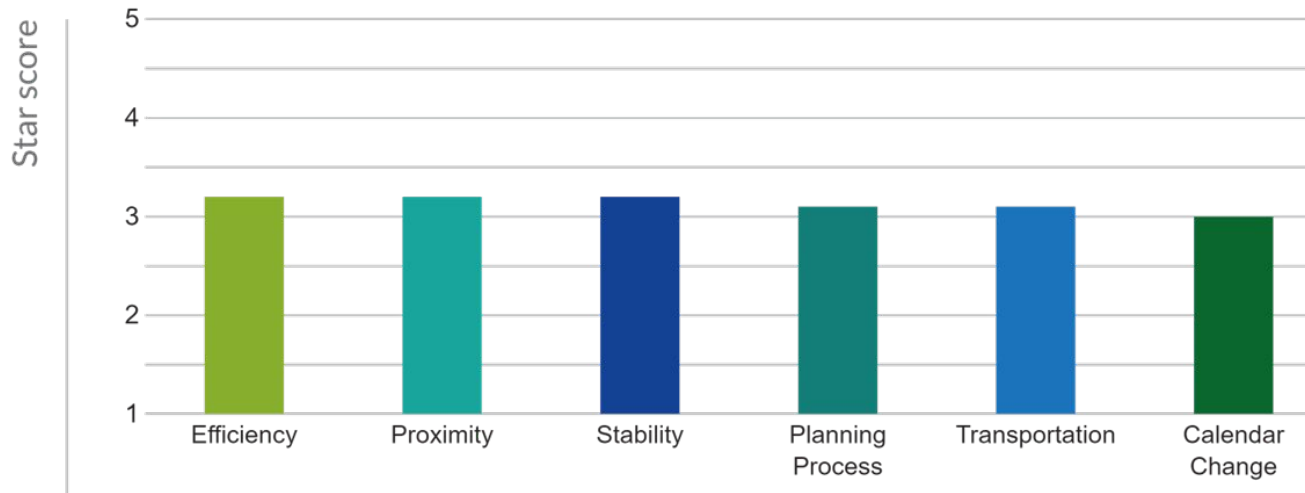
Which of the following best describes where you live within Wake County?

%	Person Icon	Answer
6%	(18)	Central Area
4%	(13)	Eastern Area
2%	(5)	Northern Area
4%	(13)	Northeastern Area
46%	(148)	Northwestern Area
9%	(30)	Southern Area
4%	(14)	Southeastern Area
14%	(46)	Southwestern Area
10%	(32)	Western Area

ThoughtExchange: Summary Data - Counts (General Draft 2)



ThoughtExchange: Summary Data - Ratings (General Draft 2)



ThoughtExchange: Themes (General Draft 2)

→ Stability

- ◆ concerns about impact of assignment changes on students' mental health and academics; desire for expanded stability rules; concerns about losing transportation to calendar options

→ Proximity

- ◆ prefer to be assigned to schools close to home; concerns about road construction projects impacting commute times

→ Calendar Change

- ◆ concerns about lack of calendar options; desire to maintain students' current calendar

→ Planning Process

- ◆ concerns that no changes were included in Draft 2; questions about future growth projections

→ Transportation

- ◆ concerns about length of bus rides; concerns about not having transportation with stability transfers; support for decreasing pressure on bus drivers

→ Efficiency

- ◆ concerns about capped schools; desire to use year-round calendar to increase capacity; concerns about continued residential growth

ThoughtExchange: Key Takeaways (General Draft 2)

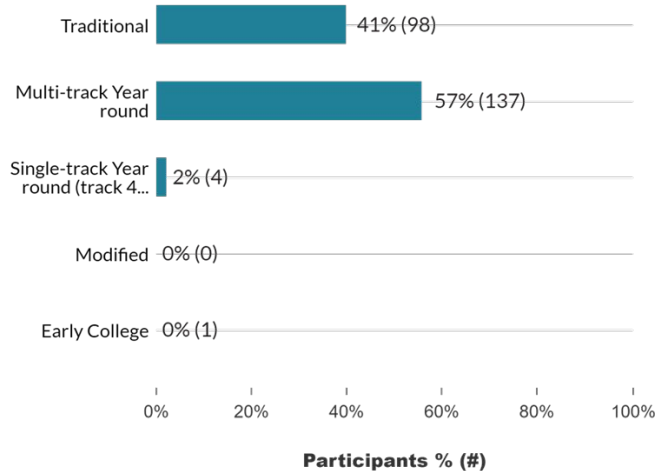
- Concerns about the proposed changes to school calendars and reassignments, particularly moving students from traditional to year-round schools
- Strong desire for stability and continuity in school assignments
- Concerns about the availability of staff and resources for the proposed changes, as well as the potential impact on student achievement and well-being
- Some feel that their feedback and concerns from previous exchanges have been disregarded or not adequately addressed
- Concerns about the impact of school reassignments on transportation, proximity, and accessibility for students and families

ThoughtExchange: Participation (Pleasant Grove ES Calendar)

October 17 - November 3, 2023:

“What are your thoughts or questions about the possibility of Pleasant Grove Elementary becoming a multi-track year-round school?”

Which of the following best describes the school calendar for your student's current school?





265
Participants




303
Thoughts



6,038
Ratings

Which of the following best describes your role?



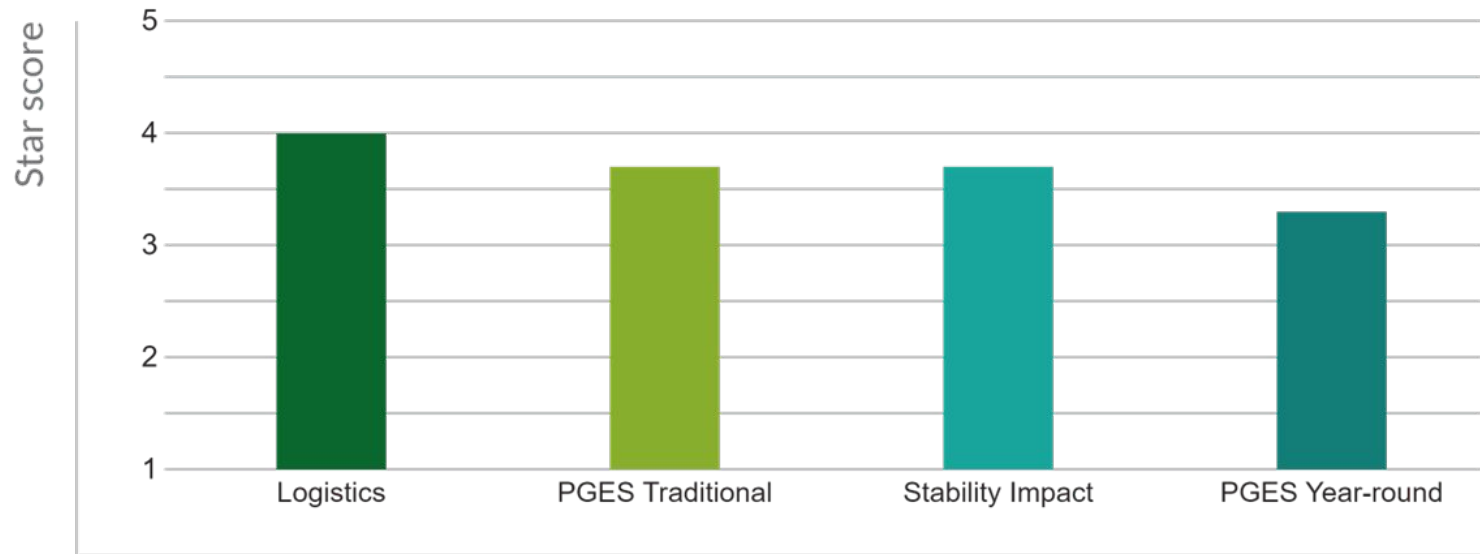
241
Responses

%	#	Answer (Multi-select)
91%	(219)	Parent/Guardian
0%	(1)	Student
4%	(9)	Community Member
11%	(27)	Staff

ThoughtExchange: Summary Data - Counts (PGES Calendar)



ThoughtExchange: Summary Data - Ratings (PGES Calendar)



ThoughtExchange: Themes (PGES Calendar)

→ Stability Impact

- ◆ desire to maintain students' current calendar; preference to not have assignment changes into PGES approved; desire for expanded stability rules

→ Logistics

- ◆ questions about support for staff if calendar change is approved; questions about track assignments

→ PGES Year-round


- ◆ support for changing the calendar to year-round; support for maintaining year-round calendar for students currently attending year-round schools

→ PGES Traditional

- ◆ support for maintaining traditional calendar; concerns about impact of changing the calendar

ThoughtExchange: Key Takeaways (PGES Calendar)

- If reassignment is approved, year-round would generally be preferred for families currently at Alston Ridge and Parkside Elementary
- Some suggestions that all schools in the area should be multi-track year-round to support growth and stability
- Concerns about the impact of calendar changes for families on work schedules, family time, and financial situations
- Concerns about the staffing and support for schools undergoing calendar changes
- Mental health and emotional well-being of students are important factors for families when considering school reassignments and calendar changes



Public Information Sessions & Public Hearing - Draft #2

Public Information Sessions & Public Hearing: Participation

Format	Date(s)	Participants	Views (Recording)*
Virtual Public Information Session	Oct 24 (Draft 2 - General)	42	64
	Oct 25 (Draft 2 - Pleasant Grove Elementary Calendar)	73	82
Public Hearing	Nov 8	11	n/a

**as of 5:00 pm on November 9, 2023*

Public Information Session: Draft 2 General - Key Takeaways

- Concerns about proposed reassignments, particularly those affecting neighborhoods that have had reassignments in the past
- Clarifying questions about the stability rules
- Questions about the impact of calendar application changes and/ or loss of transportation for current calendar application options
- Concerns about the impact of proposed changes to a family's school calendar, such as moving from a traditional to a year-round calendar and vice versa
- Suggested alternative solutions, such as making capped schools year-round, identifying different neighborhoods to be reassigned or delaying assignment changes
- Questions about the impact of new residential developments on future enrollment growth

Public Information Session: Draft 2 Pleasant Grove Calendar- Key Takeaways

- Clarifying questions about the logistics for implementing a calendar change, such as how students will be assigned to tracks
- Concerns about the impact of a calendar change on current Pleasant Grove students that will remain assigned to the school
- Questions about impact of calendar change on the current staff at Pleasant Grove, such as the potential for staff turnover
- Suggestions to convert other capped or overcrowded schools in the region to a year-round calendar

Public Hearing: Key Takeaways

- Requests to not move forward with proposed assignment changes in several areas
- Concerns about the impact of calendar changes for students proposed to be assigned to a school with a school calendar that is different from their current calendar (traditional to year-round OR year-round to traditional)
- Concerns about the potential future impact of Parkside Middle on elementary students proposed to be impacted by the current plan
- Request to add a change to the current plan for the middle school assignment for a neighborhood in the Barton Pond Elementary base
- Suggested alternative solutions for the northwestern area, such as making capped schools year-round or identifying different neighborhoods to be reassigned
- Concerns about the frequency of assignment changes for various neighborhoods proposed to be impacted by the current plan

Questions & Answers: Draft 2

Question:

If my older student is assigned to a year-round middle school and my younger student is assigned to a traditional calendar elementary school, how can I get them on the same calendar?

Families wishing to request a school other than their base school may submit an application during the magnet application period and/ or during the request for transfer application period. More information can be found at www.wcpss.net/magnet and www.wcpss.net/changeyourschool.

Questions & Answers: Draft 2

Question:

Are stability transfers guaranteed to be approved?

YES

If a student is eligible for a stability transfer (see the proposed stability rules) AND an application is submitted during the designated Stability Transfer application period, the request will be approved.

Please note, requests submitted after the Stability Transfer application period are NOT guaranteed and will be reviewed on a case by case basis in accordance with Board Policy 4150.

Questions & Answers: Draft 2

Question:

Can students from other capped elementary schools in the Northwestern area (Cedar Fork Elementary, Northwoods Elementary, etc.) be assigned to Pleasant Grove Elementary instead of the current recommendations that impact Alston Ridge Elementary and Parkside Elementary?

The recommendations included in the proposal are specifically to relieve crowding and address projected enrollment growth at Alston Ridge Elementary and Parkside Elementary, which are both capped schools.

Reassigning areas from Cedar Fork Elementary or Northwoods Elementary would not solve these concerns. Separately, the number of students residing in these areas is significantly lower than the areas included in the proposal and would not be a comparable alternative to the current recommendations.

Questions & Answers: Draft 2

Question:

Can other schools in the Northwestern area (Cedar Fork Elementary, Northwoods Elementary, Hortons Creek Elementary, etc.) be converted to a year-round calendar and then remove the current recommendations that impact Alston Ridge Elementary and Parkside Elementary?

Both Alston Ridge Elementary and Parkside Elementary are capped schools that already operate on a multi-track year-round calendar. Converting other area schools to a multi-track year-round calendar would not relieve the crowding at these schools.

However, staff will continue to evaluate all of the tools available to address other capped and overcrowded schools in this region, including an analysis of the impact of converting existing schools to a multi-track year-round calendar.

Questions & Answers: Draft 2

Question:

Once the enrollment plan is approved, when does it take effect?

The 2024-25 enrollment plan, once approved, will take effect for the 2024-2025 school year. Assignment changes will not take effect until the start of the 2024-2025 school year. Start dates vary based on the operating calendar of the school, for more information on the approved 2024-2025 school calendars, please visit www.wcpss.net/calendars.

Please note that if you need to pre-register for the 2024-2025 school year, you will work with the base assigned school for the current (2023-2024) school year.

Questions & Answers: Draft 2

Question:

For the areas recommended to be assigned to West Lake Elementary from Banks Road Elementary, will they be impacted again when Hilltop Needmore Elementary opens?

No

The recommendation included in the current draft of the proposal would not be subject to another elementary reassignment when Hilltop Needmore Elementary opens in 2025-2026.




Public Engagement Summary

Public Engagement Summary: Activities

- Regional Public Engagement Sessions (March - May)
 - *“What are the most important things that district leadership should be aware of and take into consideration when managing enrollment growth and school crowding?”*
 - *“What are the most important things that leadership should be aware of and take into consideration when opening a new school in your community?”*
- Focus Groups (June)
 - Follow up to concepts of “cohort continuity” and “school calendar alignment” that surfaced in the regional sessions
- Draft 1 ThoughtExchange (September 19 - October 6)
 - *“What are your thoughts or questions about the proposed changes?”*
- Draft 1 Public Information Sessions (September 26 & 28, October 4 & 5)
 - Four regional sessions
- Draft 2 ThoughtExchange (October 17 - November 3)
 - General *“Based on the information shared in Draft #2, what are your outstanding thoughts or questions?”*
 - Pleasant Grove Elementary Calendar *“What are your thoughts or questions about the possibility of Pleasant Grove Elementary becoming a multi-track year-round school?”*
- Draft 2 Public Information Sessions (October 24 & 25)
 - One general session & one Pleasant Grove Elementary calendar session
- Public Hearing (November 8)
 - Board of Education Public Hearing

Public Engagement Summary: Participation

Format	Date(s)	Participants	Views (Recording)*
ThoughtExchange	Sep 19 - Oct 6 (Draft 1)	1,739	n/a
	Oct 17 - Nov 3 (Draft 2 - General)	385	n/a
	Oct 17 - Nov 3 (Draft 2 - Pleasant Grove Elementary Calendar)	265	n/a
Virtual Public Information Session	Sep 26 (Draft 1 - Northwestern Area)	186	66
	Sep 28 (Draft 1 - Central, Northern & Northeastern Areas)	9	91
	Oct 4 (Draft 1 - Southern & Southwestern Areas)	140	160
	Oct 5 (Draft 1 - Southeastern Area & General Overview)	68	87
	Oct 24 (Draft 2 - General)	42	64
	Oct 25 (Draft 2 - Pleasant Grove Elementary Calendar)	73	82
Public Hearing	Nov 8	11	n/a
Totals		2,918	550



The district website will be updated once the final plan is approved by the Board.

For more information and resources, visit:

www.wcpss.net/enroll



Capped and Overcrowded Schools (Review)

Capped/ Overcrowded Schools for 2023-2024

Capped Elementary Schools*

Abbotts Creek

Alston Ridge (MTYR)

Apex

Apex Friendship

Beaverdam

Cedar Fork

Highcroft Drive

Holly Grove (MTYR)

Holly Ridge

Hortons Creek

Mills Park

Northwoods

Oakview

Olive Chapel (MTYR)

Parkside (MTYR)

River Bend

Rogers Lane

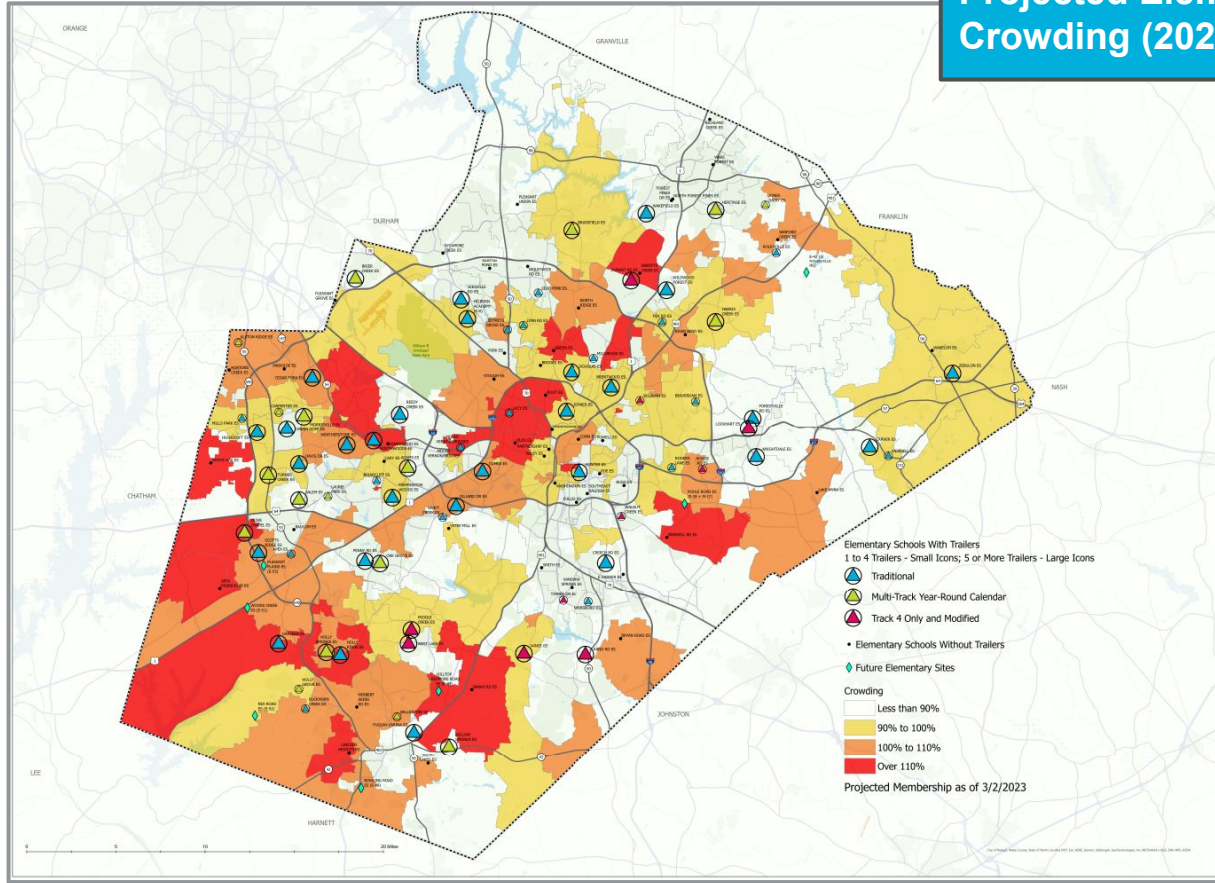
Scotts Ridge

Weatherstone

White Oak

*as of February 21, 2023
(MTYR) = multi-track year round

Projected Elementary School Crowding (2023-24)



Capped/ Overcrowded Schools for 2023-2024 *(continued)*

Capped Middle Schools*

Apex Friendship

Mills Park

Capped High Schools*

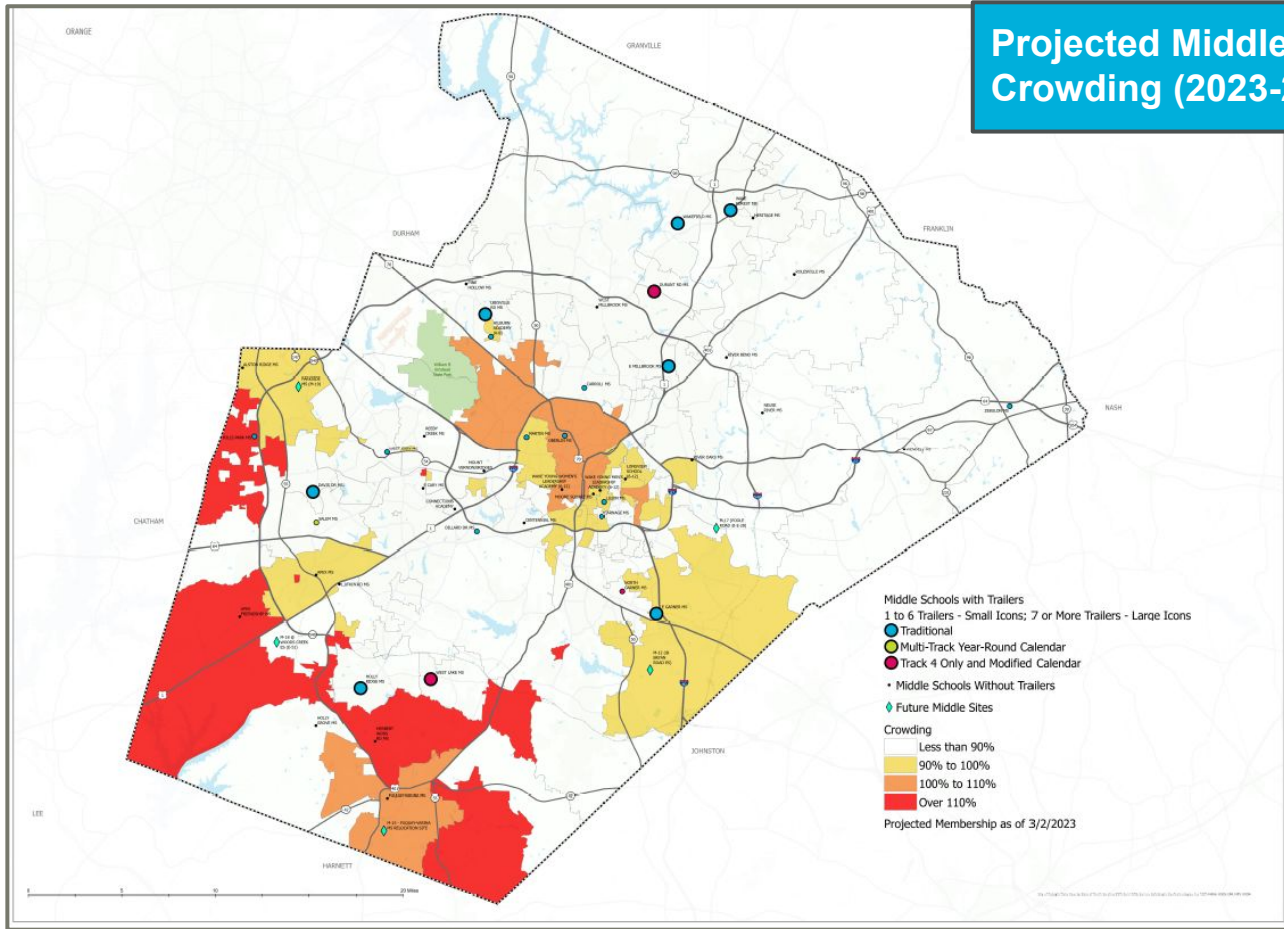
Apex Friendship

Heritage

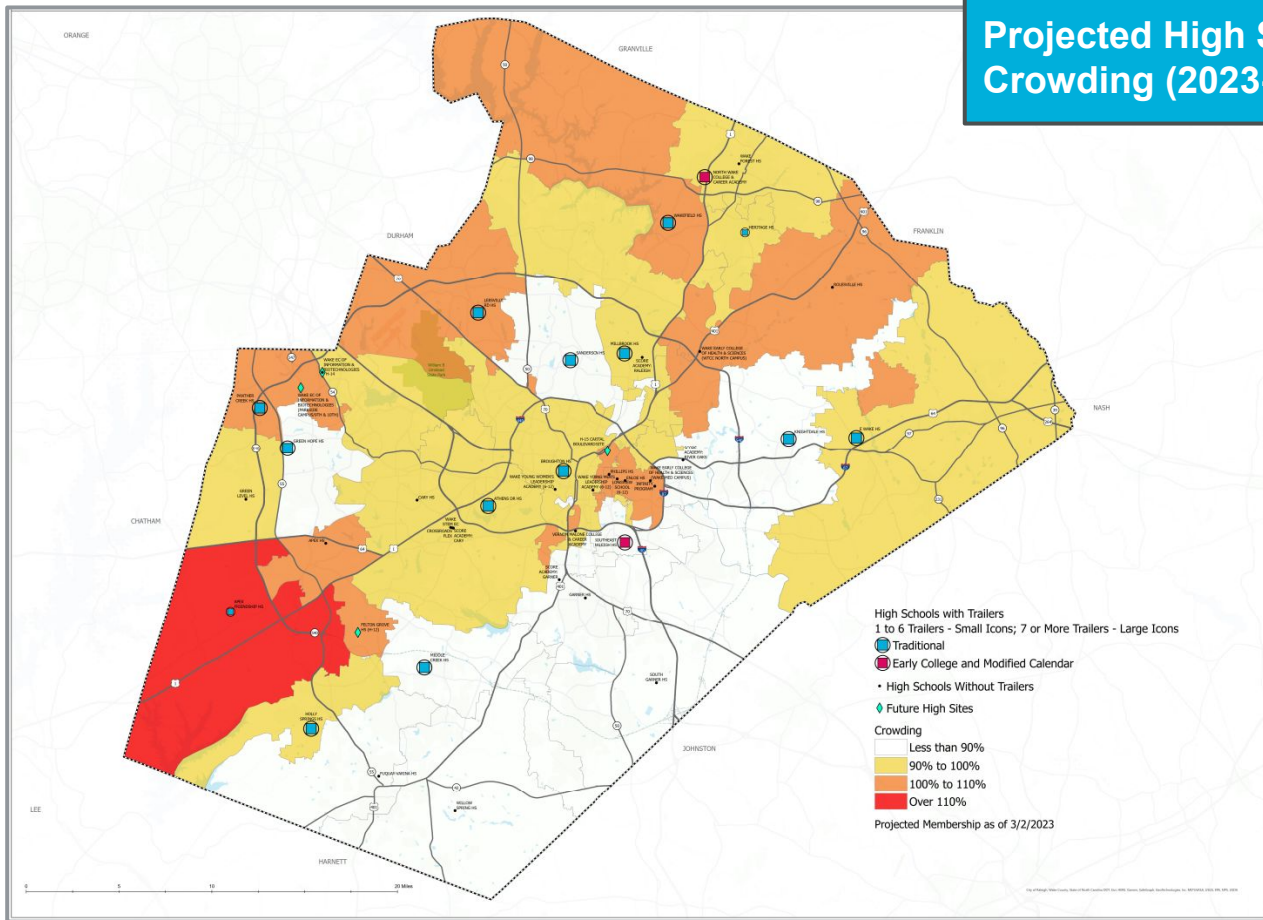
Panther Creek

*as of February 21, 2023

Projected Middle School Crowding (2023-24)



Projected High School Crowding (2023-24)





Current Capital Improvement Plan (CIP) (Review)

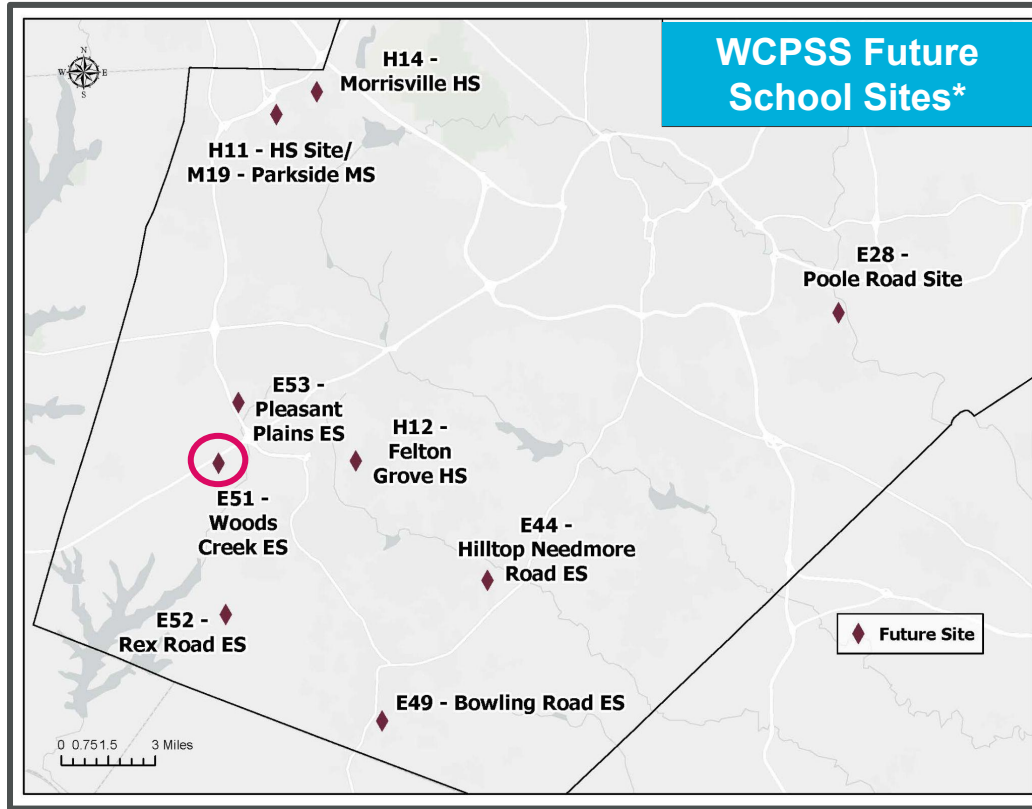
Review of Current CIP: Seven-year Plan for Future School Openings*

Code	School Name	2023-24	2024-25	2025-26	2026-27	2027-28	2028-29	2029-30	2030-31
E51	Woods Creek ES	Baucom ES	E51 ES						
E44	Hilltop Needmore ES			E44 ES					
E52	Rex Road ES			E52 ES					
E49	Bowling Road ES			E49 ES					
H12	Felton Grove HS			H12 HS					
E53	Pleasant Plains ES			E53 ES					
M19	Parkside MS/ Wake EC of Infor. & Biotech.				M19 MS/ H11 EC*				
H14	Morrisville HS					H14 HS			
E28	Poole Road ES								E28 ES
	Swing Space: A new school serves as a swing space for an existing school's renovation before opening with its own population.								
	New school opening with unique base attendance area								

This seven-year plan is designed with flexibility, so that it may be reviewed annually by WCPSS staff and Wake County Planners.

**Note: Market volatility, scope changes & design/ construction schedules have the potential to impact scheduled project completion dates.*

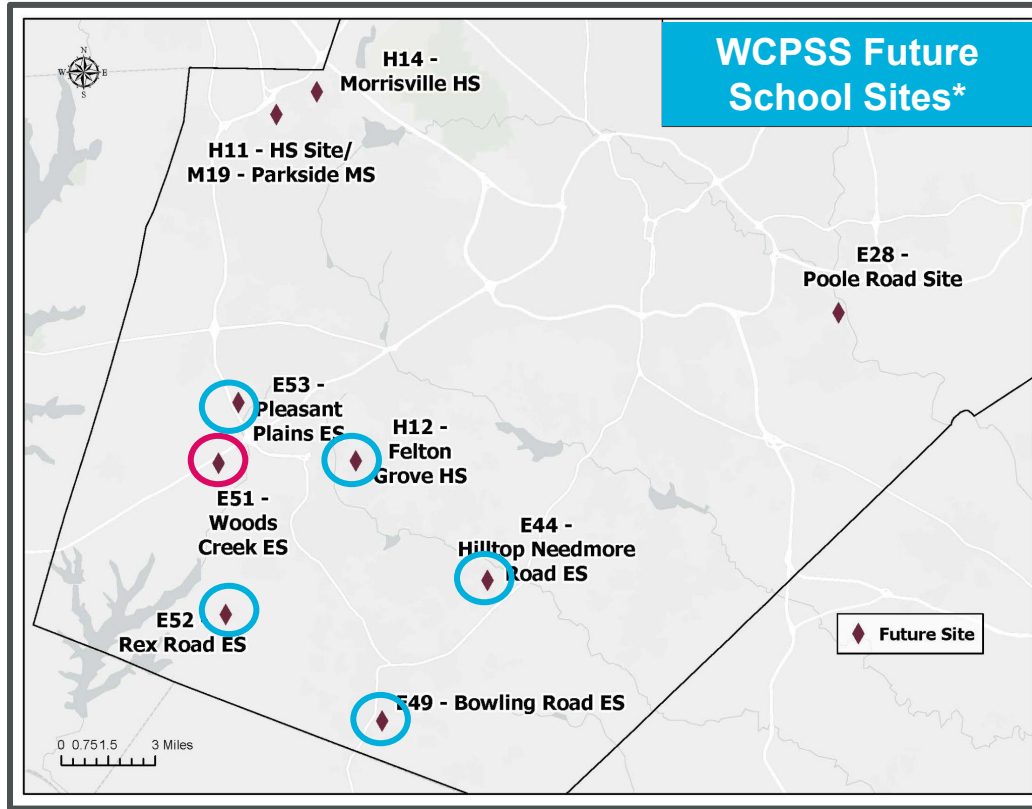
Future School Sites*



WCPSS Future School Sites*

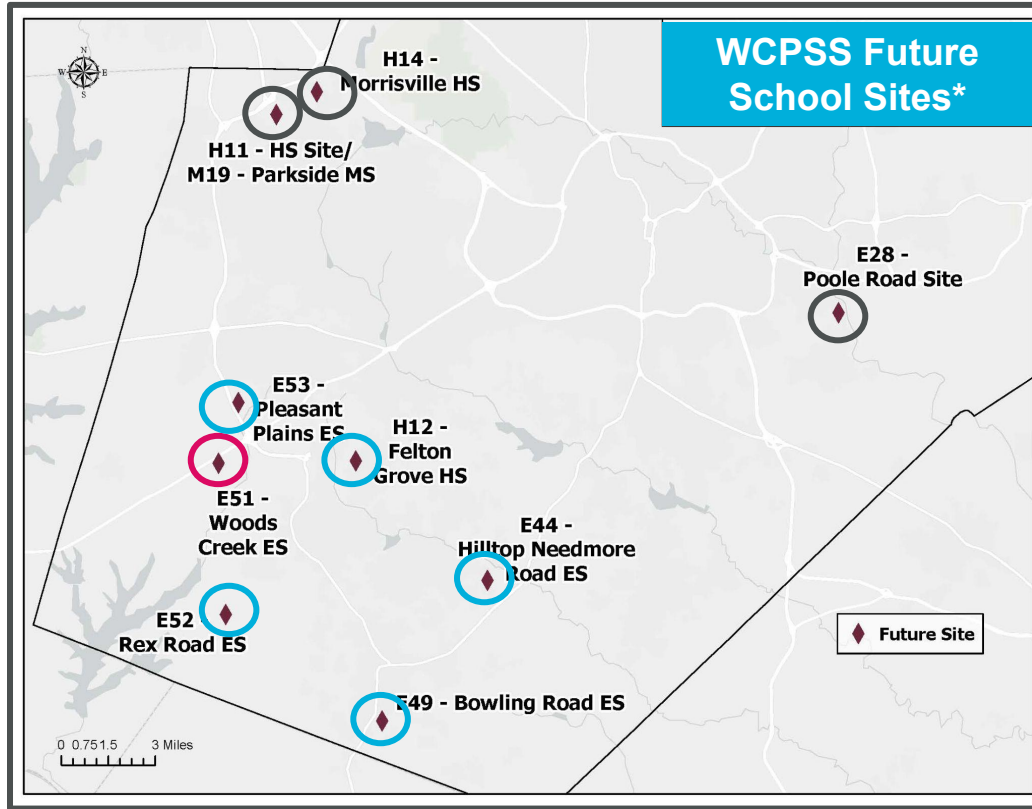
**Note: Market volatility, scope changes & design/ construction schedules have the potential to impact scheduled project completion dates.*

Future School Sites*



**Note: Market volatility, scope changes & design/ construction schedules have the potential to impact scheduled project completion dates.*

Future School Sites*



WCPSS Future School Sites*

**Note: Market volatility, scope changes & design/ construction schedules have the potential to impact scheduled project completion dates.*



Final Draft of 2024-2025 Enrollment Plan



Recommendations for Base Assignment Changes

Base School Impacts (2024-25) – Elementary School

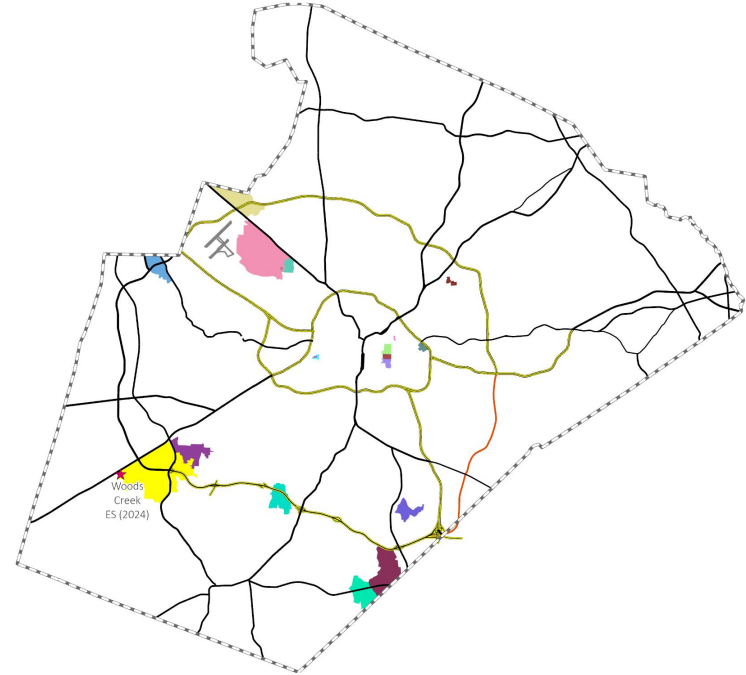
Base Attendance Areas Impacted:

Sending Schools:

Alston Ridge
Apex
Banks Road
Bryan Road
Carpenter
Durant Road
Holly Springs
Leesville Road
Oakview
Parkside
Pleasant Grove
Sanford Creek
Southeast Raleigh

Receiving Schools:

Aversboro
Brier Creek
Combs
Durant Road
Hunter
Joyner
Leesville Road
Oak Grove
Olds
Partnership
Pleasant Grove
Powell
Rand Road
Stough
Underwood
Vance
West Lake
York
Woods Creek - NEW



Base School Impacts (2024-25) – Middle School

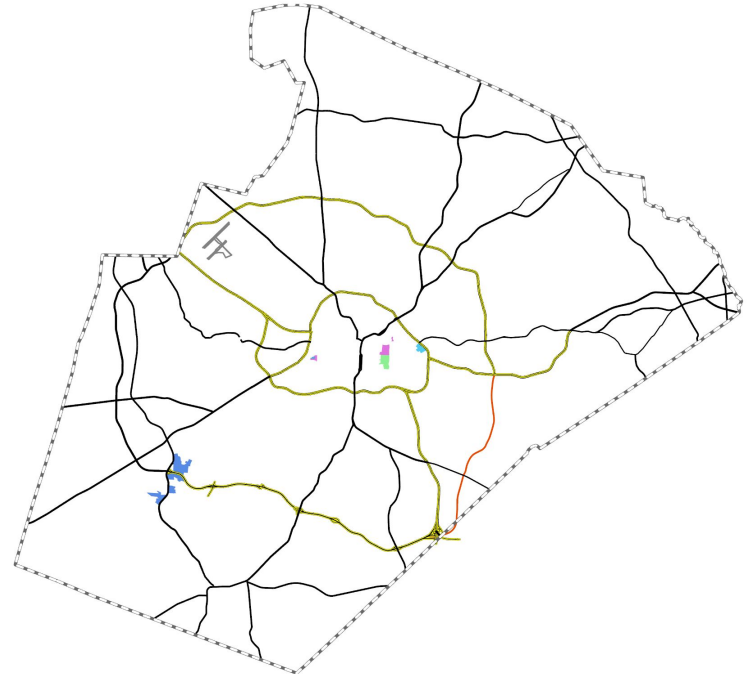
Base Attendance Areas Impacted:

Sending Schools:

Alston Ridge
Apex
Apex Friendship
Centennial
Durant Road
Leesville Road

Receiving Schools:

Centennial
Ligon
Lufkin Road
Martin
Moore Square



Base School Impacts (2024-25) – High School

Base Attendance Areas Impacted:

Sending Schools:

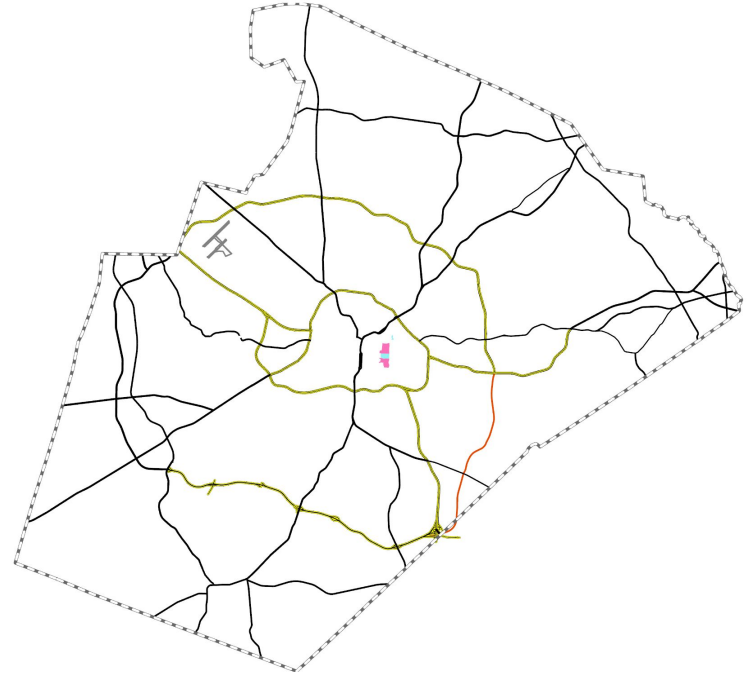
Leesville Road

Southeast Raleigh

Receiving Schools:

Broughton

Enloe





Southern Area & Southwestern Area

Woods Creek Elementary (opening July 2024)



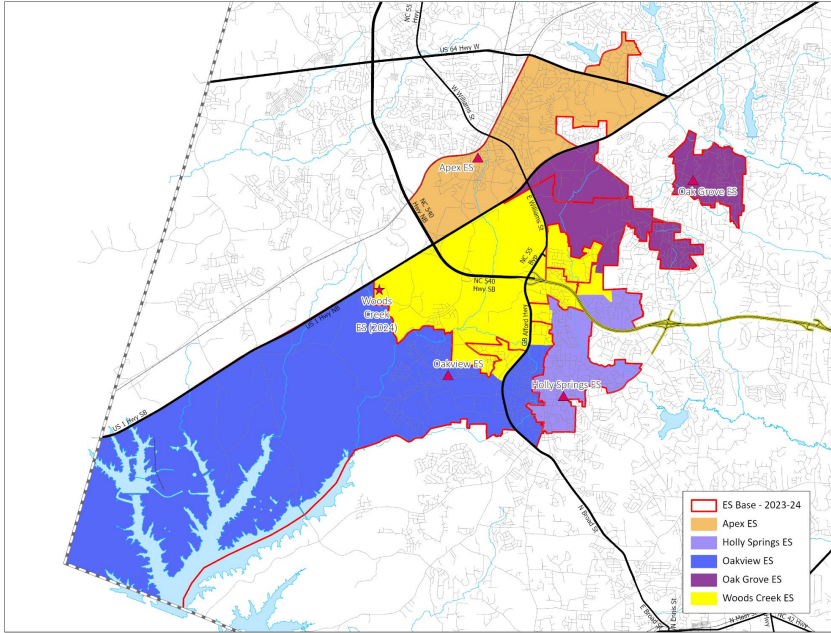
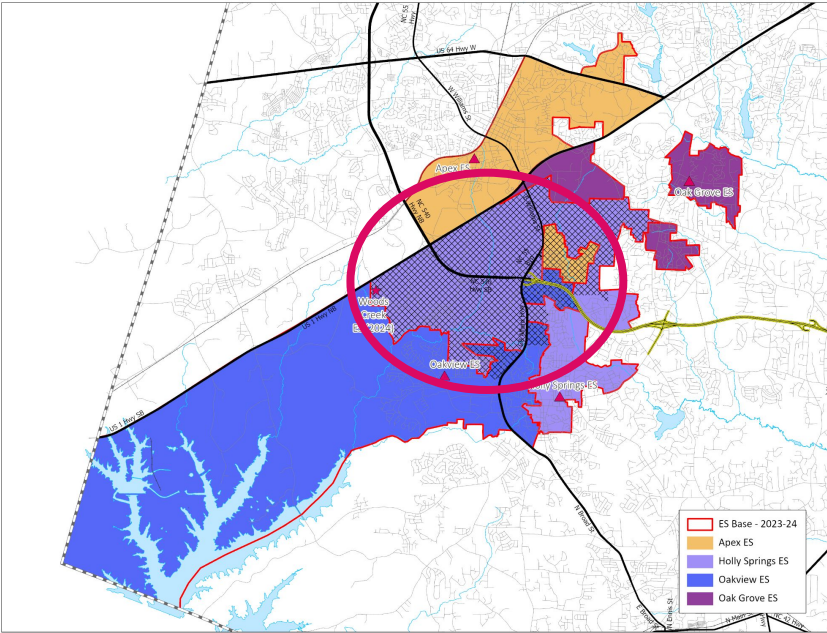
New School – Woods Creek ES (opening July 2024)

- Calendar Recommendation:
 - Multi-track Year-round Calendar (Capacity = 924)
- Impacted Schools:
 - Apex Elementary, Holly Springs Elementary & Oakview Elementary

2023-24 Base School	Calendar	Capacity w/ Trailers	2024-25 Projected Utilization w/ Trailers
Apex ES	T	588	110%
Holly Springs ES	M-T	876	111%
Oakview ES	T	736	138%

- M-T – Multi-Track Year-Round Calendar
- S-T – Single Track Year-Round Calendar
- T – Traditional Calendar
- Util = Utilization based on building capacity, updated March 2023
- Util w/ Trl = Utilization with Trailers

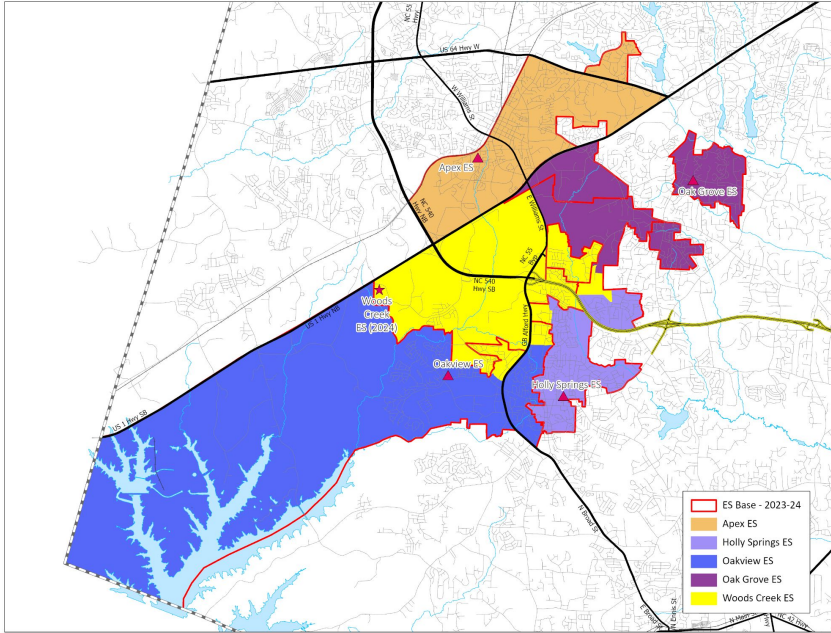
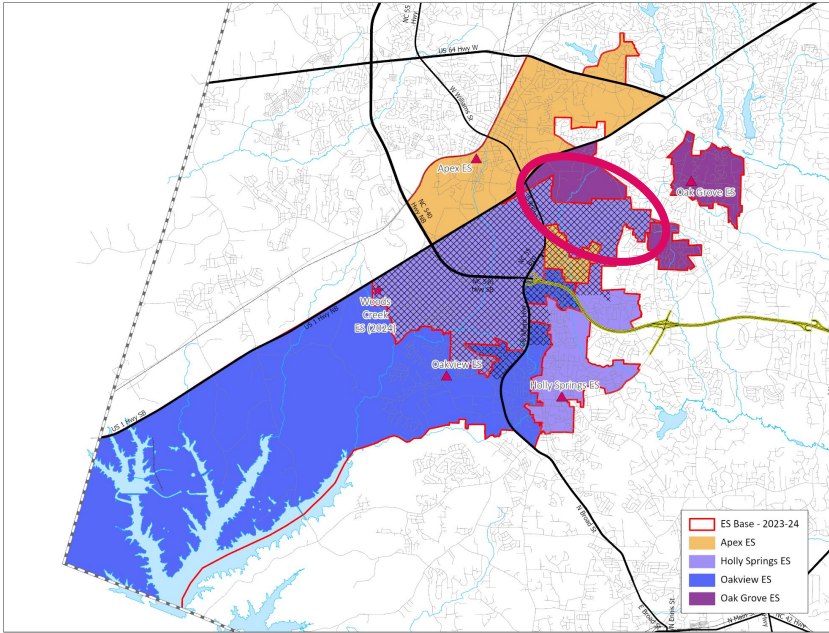
New School – Woods Creek ES



Impacted Areas: 

Proposed Base Areas

Existing School – Oak Grove ES (from Holly Springs ES)



Impacted Areas: 

Proposed Base Areas

New School – Woods Creek ES & Existing School – Oak Grove ES (from Holly Springs ES)

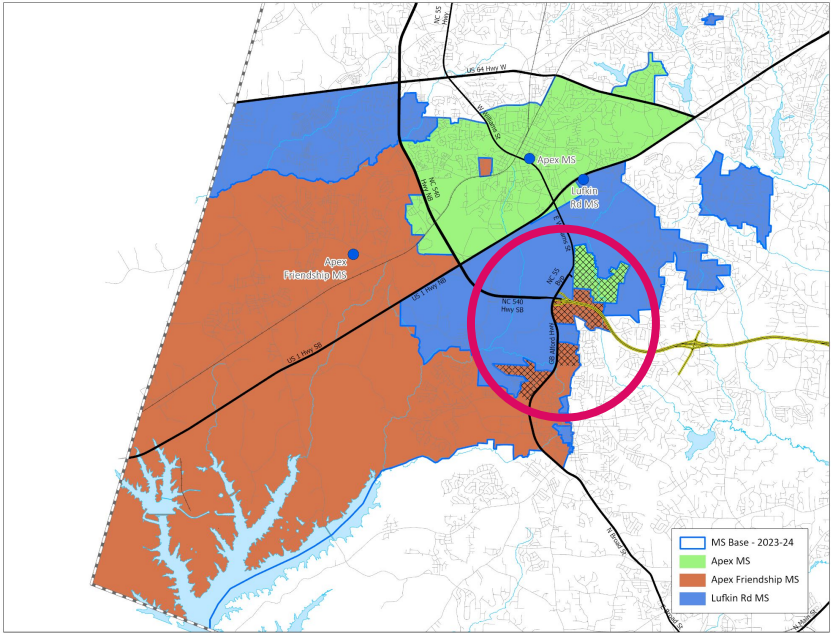
2023-24 Base School	Calendar	Capacity w/ Trailers	2024-25 Util w/ Trailers	2026-27 Util w/ Trailers
Apex ES	T	588	110%	108%
Holly Springs ES	M-T	876	111%	134%
Oakview ES	T	736	138%	156%
Oak Grove ES	M-T	716	78%	76%

2024-25 Base School	Calendar	Capacity w/ Trailers	2024-25 Util w/ Trailers	2026-27 Util w/ Trailers
Apex ES	T	588	93%	93%
Holly Springs ES	M-T	876	83%	91%
Oakview ES	T	736	111%	128%
Oak Grove ES	M-T	716	84%	86%
Woods Creek ES	M-T	924	64%	74%

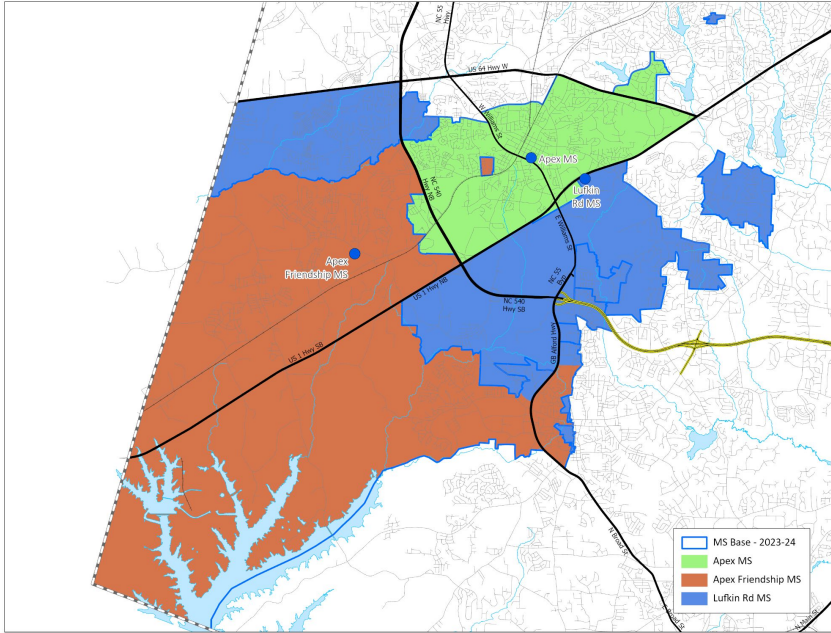
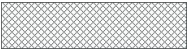
- M-T – Multi-Track Year-Round Calendar
- S-T – Single Track Year-Round Calendar
- T – Traditional Calendar
- Util = Utilization based on building capacity, updated March 2023
- Util w/ Trl = Utilization with Trailers

Technical Correction - Capacity Value

Existing School – Lufkin Road MS (from Apex & Apex Friendship MS)



Impacted Areas:



Proposed Base Areas

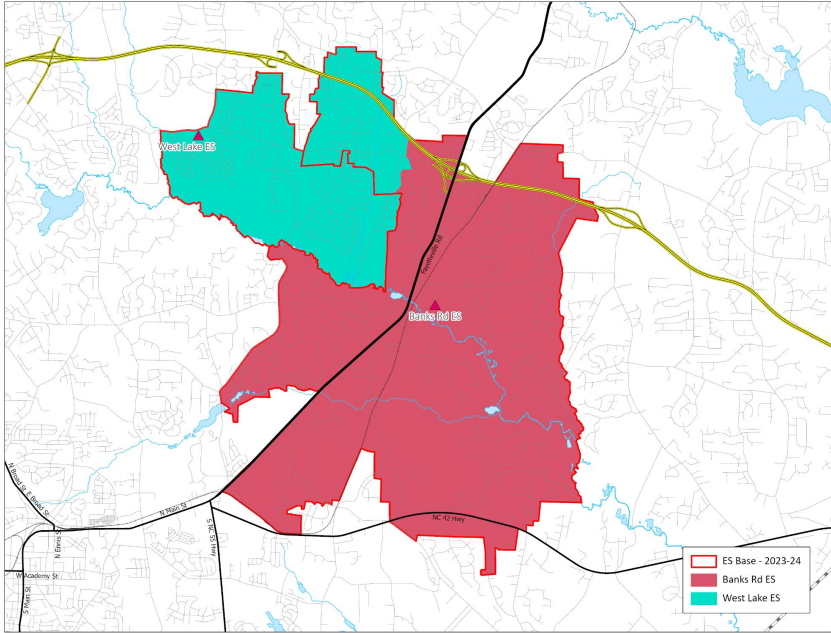
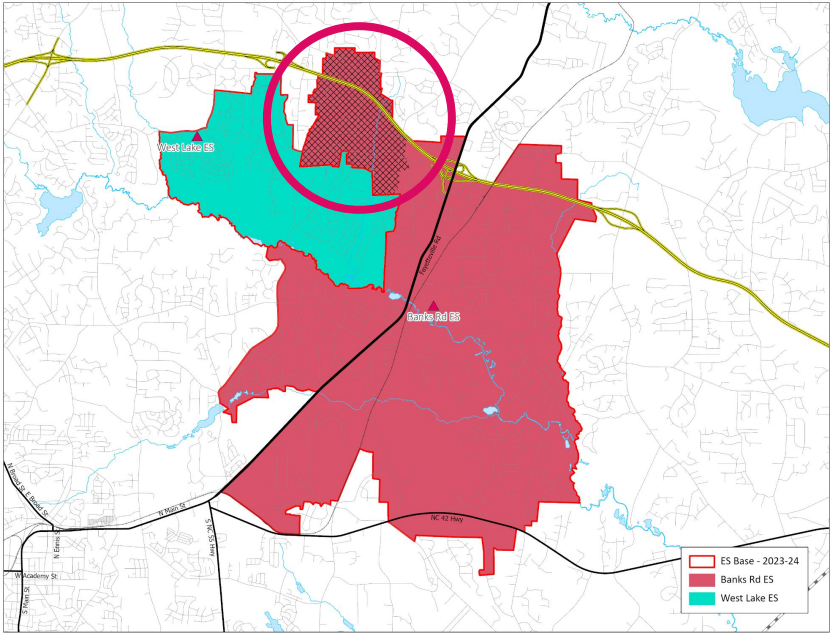
Existing School – Lufkin Road MS (from Apex & Apex Friendship MS)

2023-24 Base School	Calendar	Capacity w/ Trailers	2024-25 Util w/ Trailers	2026-27 Util w/ Trailers
Apex MS	T	936	101%	105%
Apex Friendship MS	T	1248	117%	119%
Lufkin Road MS	M-T	1248	80%	88%

2023-24 Base School	Calendar	Capacity w/ Trailers	2024-25 Util w/ Trailers	2026-27 Util w/ Trailers
Apex MS	T	936	96%	99%
Apex Friendship MS	T	1248	109%	111%
Lufkin Road MS	M-T	1248	91%	101%

- M-T – Multi-Track Year-Round Calendar
- S-T – Single Track Year-Round Calendar
- T – Traditional Calendar
- Util = Utilization based on building capacity, updated March 2023
- Util w/ Trl = Utilization with Trailers

Existing School – West Lake ES (from Banks Road ES)



Impacted Areas:



Proposed Base Areas

Existing School – West Lake ES (from Banks Road ES)

2023-24 Base School	Calendar	Capacity w/ Trailers	2024-25 Util w/ Trailers	2026-27 Util w/ Trailers
Banks Road ES	S-T	616	127%	147%
West Lake ES	S-T	748	79%	81%

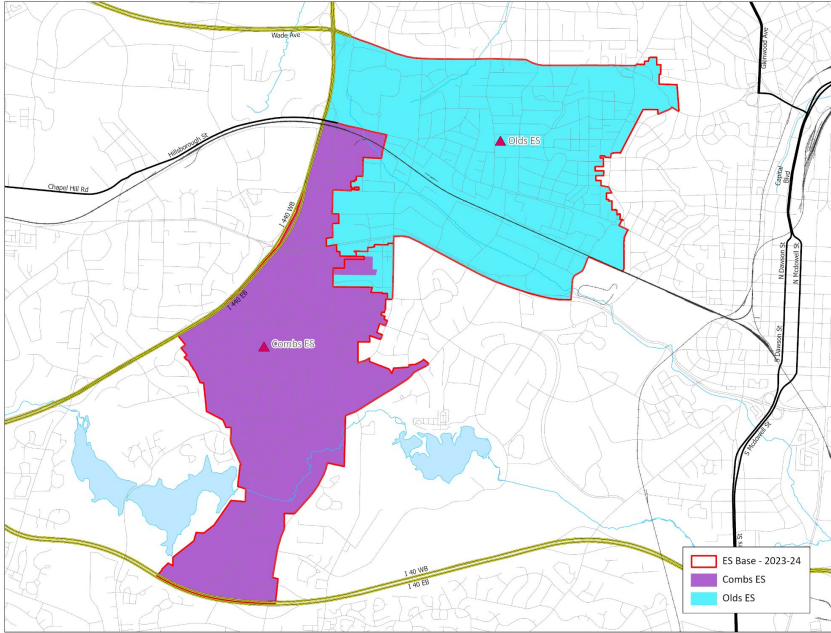
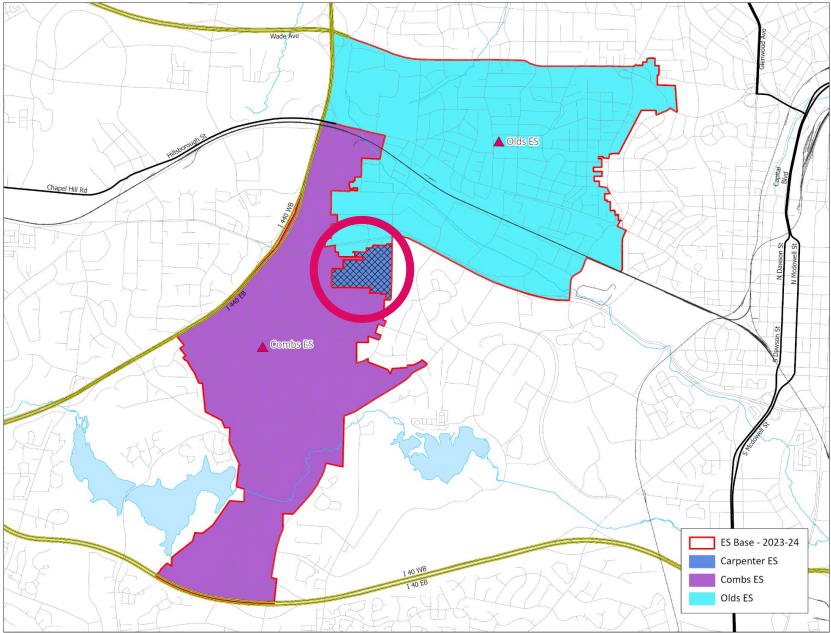
2024-25 Base School	Calendar	Capacity w/ Trailers	2024-25 Util w/ Trailers	2026-27 Util w/ Trailers
Banks Road ES	S-T	616	118%	138%
West Lake ES	S-T	748	87%	90%

- M-T – Multi-Track Year-Round Calendar
- S-T – Single Track Year-Round Calendar
- T – Traditional Calendar
- Util = Utilization based on building capacity, updated March 2023
- Util w/ Trl = Utilization with Trailers



Central Area, Northern Area & Northeastern Area

Existing School – Combs & Olds ES (from Carpenter ES)



Impacted Areas:



Proposed Base Areas

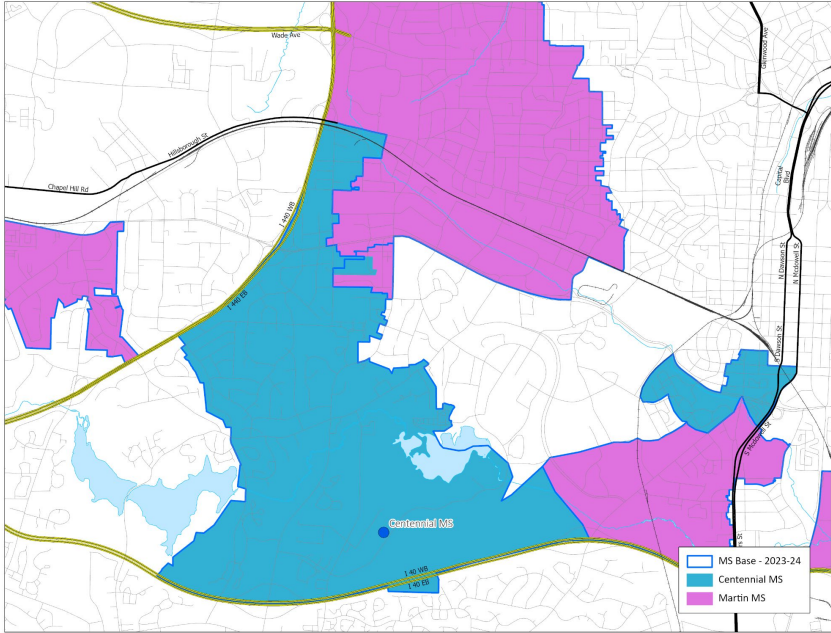
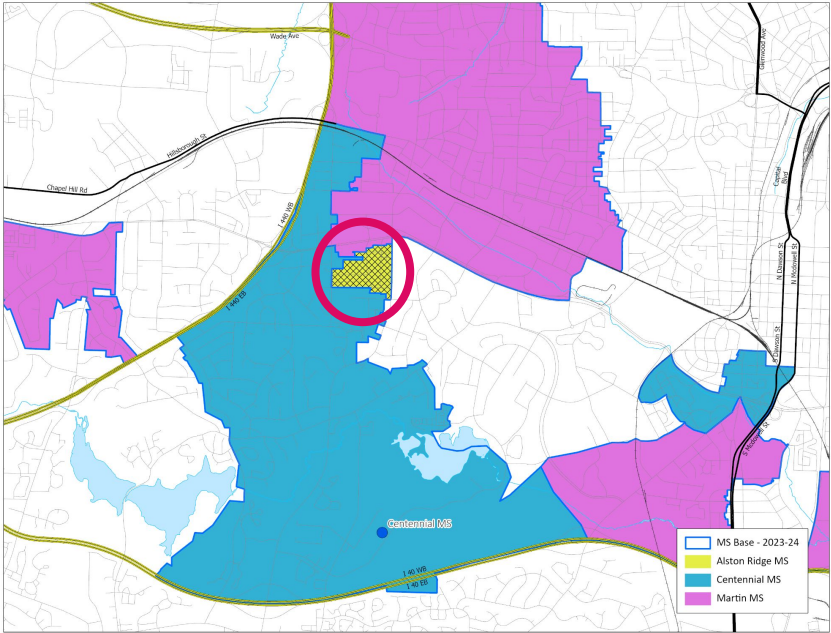
Existing School – Combs & Olds ES (from Carpenter ES)

2023-24 Base School	Calendar	Capacity w/ Trailers	2024-25 Util w/ Trailers	2026-27 Util w/ Trailers
Carpenter ES	M-T	656	113%	118%
Combs ES	T	616	100%	98%
Olds ES	T	220	115%	112%

2024-25 Base School	Calendar	Capacity w/ Trailers	2024-25 Util w/ Trailers	2026-27 Util w/ Trailers
Carpenter ES	M-T	656	106%	112%
Combs ES	T	616	103%	101%
Olds ES	T	220	123%	119%

- M-T – Multi-Track Year-Round Calendar
- S-T – Single Track Year-Round Calendar
- T – Traditional Calendar
- Util = Utilization based on building capacity, updated March 2023
- Util w/ Trl = Utilization with Trailers

Existing School – Centennial & Martin MS (from Alston Ridge MS)



Impacted Areas: 

Proposed Base Areas

Existing School – Centennial & Martin MS (from Alston Ridge MS)

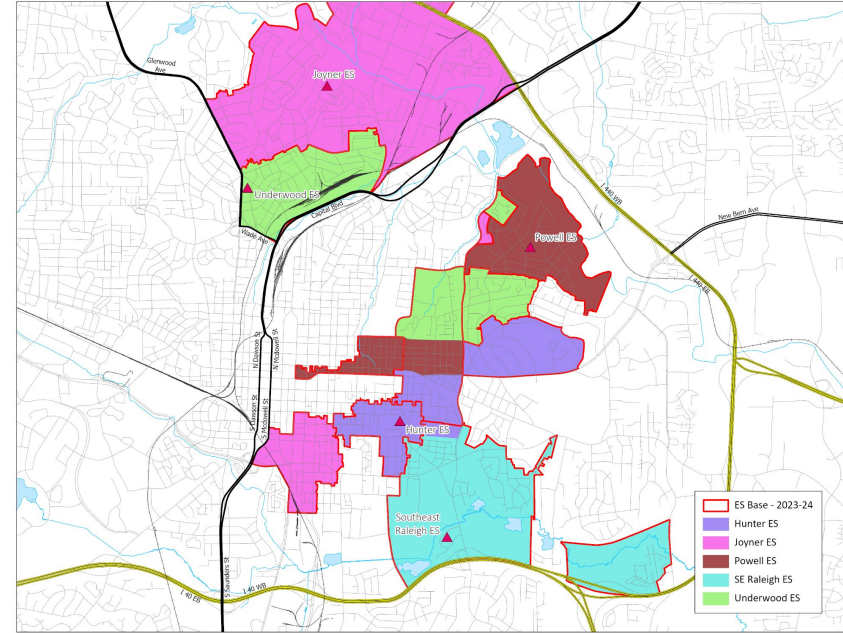
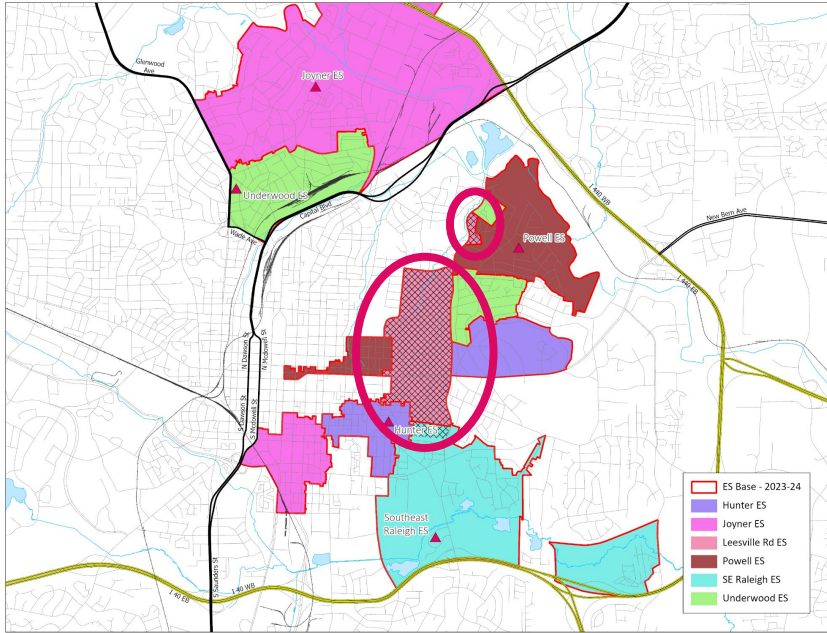
2023-24 Base School	Calendar	Capacity w/ Trailers	2024-25 Util w/ Trailers	2026-27 Util w/ Trailers
Alston Ridge MS	M-T	1560	105%	105%
Centennial MS	M	624	81%	83%
Martin MS	T	1014	101%	100%

2024-25 Base School	Calendar	Capacity w/ Trailers	2024-25 Util w/ Trailers	2026-27 Util w/ Trailers
Alston Ridge MS	M-T	1560	103%	104%
Centennial MS	M	624	84%	86%
Martin MS	T	1014	105%	105%

- M-T – Multi-Track Year-Round Calendar
- S-T – Single Track Year-Round Calendar
- T – Traditional Calendar
- Util = Utilization based on building capacity, updated March 2023
- Util w/ Trl = Utilization with Trailers

*Centennial MS is also impacted by another assignment change
Martin MS is also impacted by another assignment change*

Existing School – Hunter, Joyner, Powell & Underwood ES (from Leesville Road & Southeast Raleigh ES)



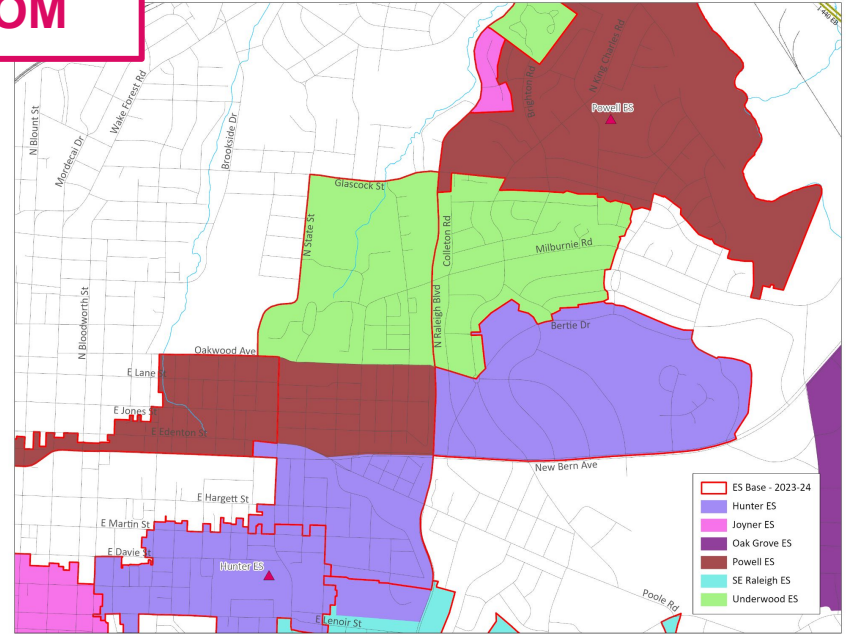
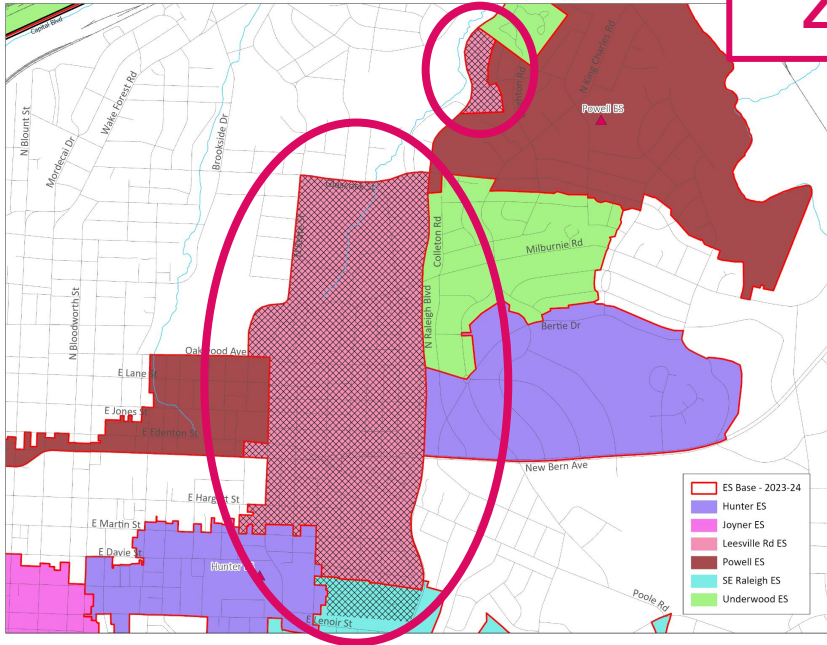
Impacted Areas:



Proposed Base Areas

Existing School – Hunter, Joyner, Powell & Underwood ES (from Leesville Road & Southeast Raleigh ES)

ZOOM



Impacted Areas:



Proposed Base Areas

Existing School – Hunter, Joyner, Powell & Underwood ES (from Leesville Road & Southeast Raleigh ES)

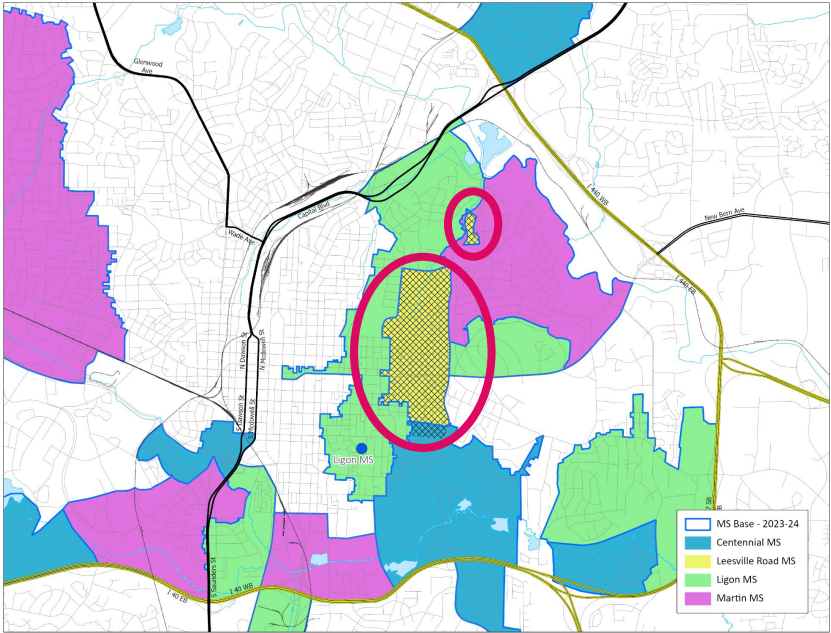
2023-24 Base School	Calendar	Capacity w/ Trailers	2024-25 Util w/ Trailers	2026-27 Util w/ Trailers
Hunter ES	T	628	103%	104%
Joyner ES	T	550	92%	91%
Leesville Rd ES	T	728	78%	81%
Powell ES	T	308	89%	88%
Southeast Raleigh ES	T	410	94%	93%
Underwood ES	T	410	100%	98%

2024-25 Base School	Calendar	Capacity w/ Trailers	2024-25 Util w/ Trailers	2026-27 Util w/ Trailers
Hunter ES	T	628	106%	107%
Joyner ES	T	550	100%	98%
Leesville Rd ES	T	728	76%	78%
Powell ES	T	308	93%	94%
Southeast Raleigh ES	T	410	94%	93%
Underwood ES	T	410	106%	105%

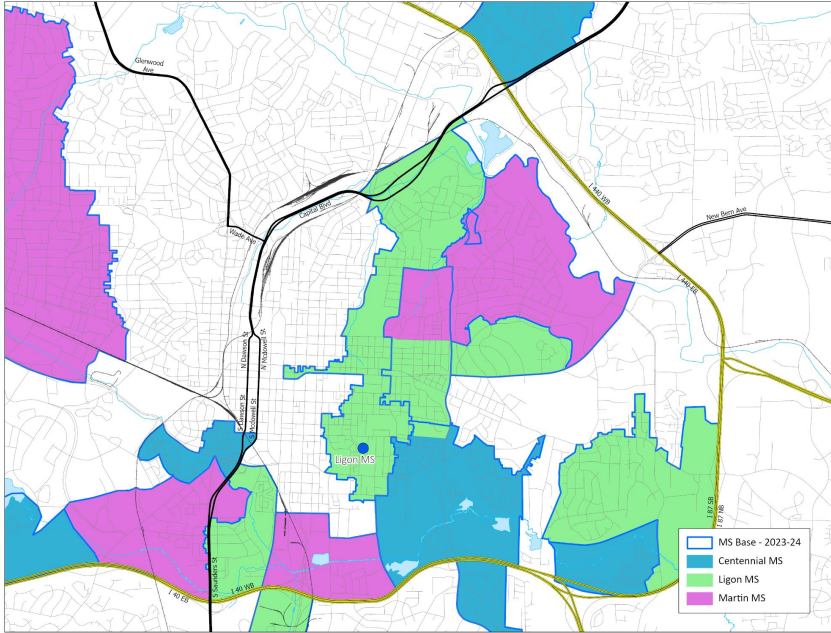
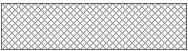
- M-T – Multi-Track Year-Round Calendar
- S-T – Single Track Year-Round Calendar
- T – Traditional Calendar
- Util = Utilization based on building capacity, updated March 2023
- Util w/ Trl = Utilization with Trailers

Leesville Road ES is also impacted by another assignment change

Existing School – Ligon & Martin MS (from Centennial & Leesville Road MS)



Impacted Areas:



Proposed Base Areas

Existing School – Ligon & Martin MS (from Centennial & Leesville Road MS)

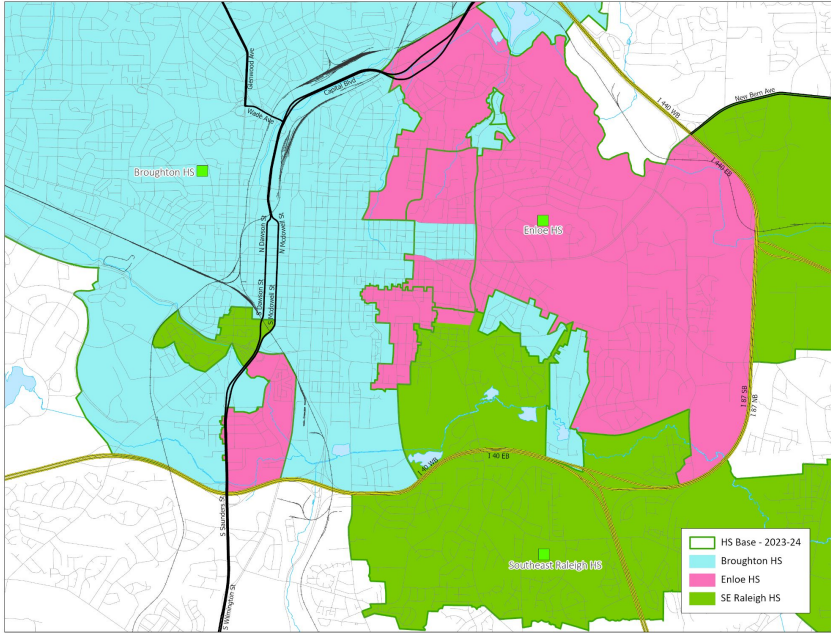
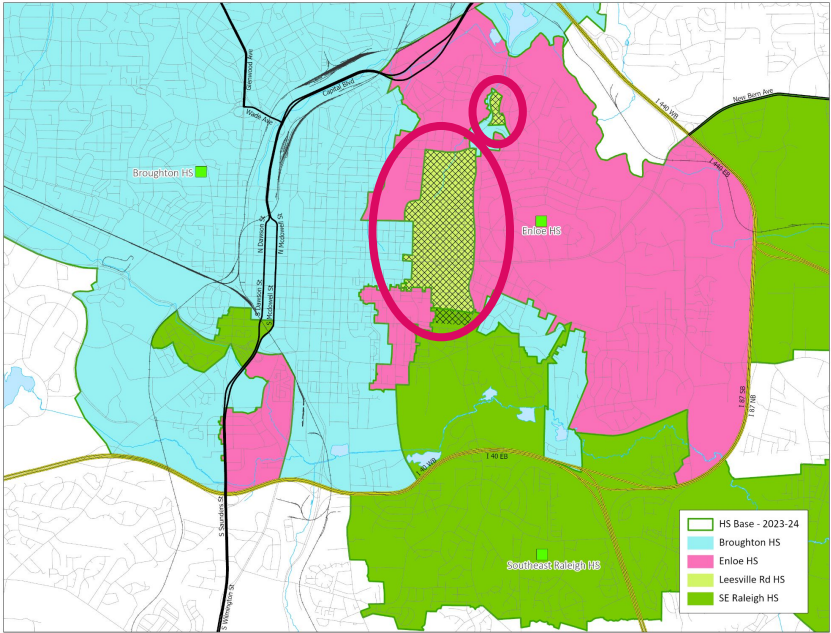
2023-24 Base School	Calendar	Capacity w/ Trailers	2024-25 Util w/ Trailers	2026-27 Util w/ Trailers
Centennial MS	M	624	81%	83%
Leesville Road MS	T	1222	66%	66%
Ligon MS	T	1014	92%	94%
Martin MS	T	1014	101%	100%

2024-25 Base School	Calendar	Capacity w/ Trailers	2024-25 Util w/ Trailers	2026-27 Util w/ Trailers
Centennial MS	M	624	84%	86%
Leesville Road MS	T	1222	62%	61%
Ligon MS	T	1014	94%	96%
Martin MS	T	1014	105%	105%

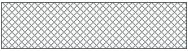
- M-T – Multi-Track Year-Round Calendar
- S-T – Single Track Year-Round Calendar
- T – Traditional Calendar
- Util = Utilization based on building capacity, updated March 2023
- Util w/ Trl = Utilization with Trailers

*Centennial MS is also impacted by another assignment change
Martin MS is also impacted by another assignment change*

Existing School – Broughton & Enloe HS (from Leesville Road & Southeast Raleigh HS)



Impacted Areas:



Proposed Base Areas

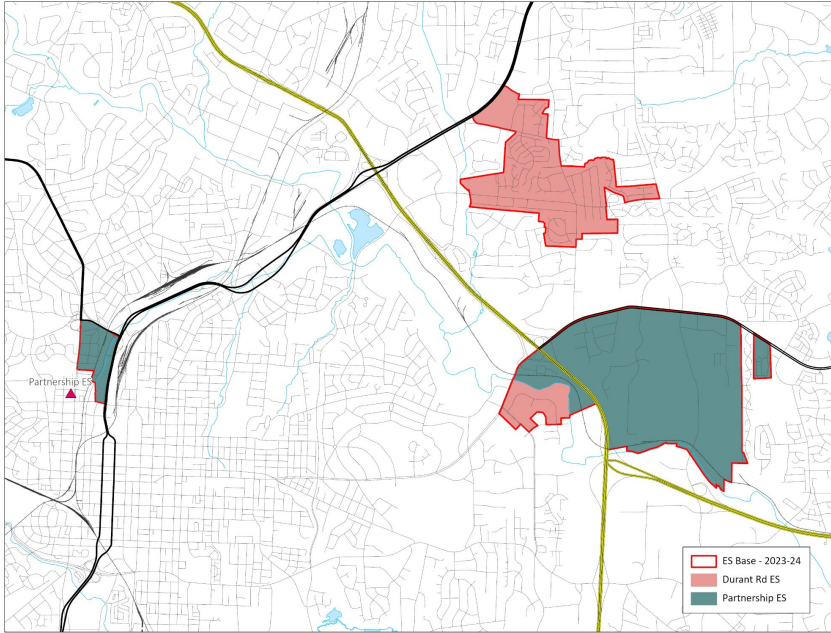
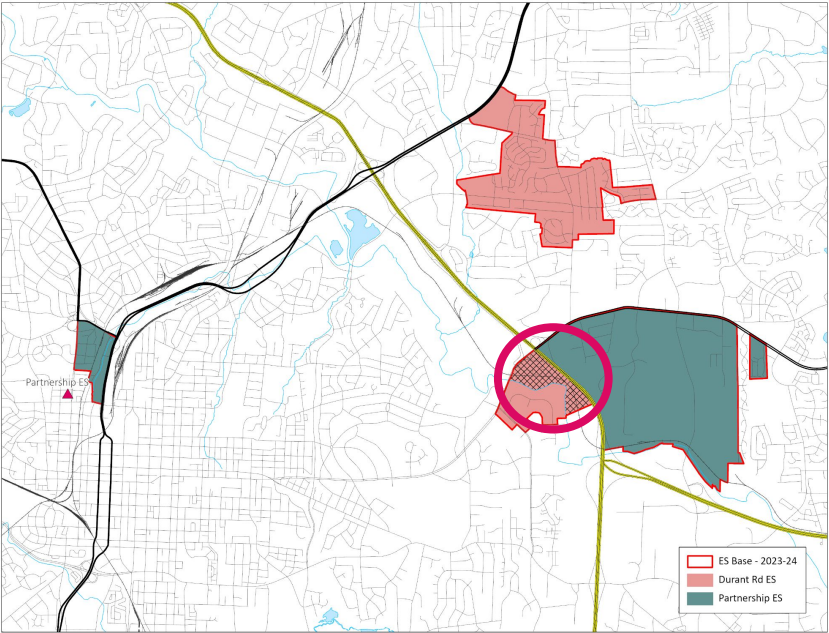
Existing School – Broughton & Enloe HS (from Leesville Road & Southeast Raleigh HS)

2023-24 Base School	Calendar	Capacity w/ Trailers	2024-25 Util w/ Trailers	2026-27 Util w/ Trailers
Broughton HS	T	2064	100%	98%
Enloe HS	T	2415	108%	107%
Leesville Road HS	T	2477	102%	99%
Southeast Raleigh HS	M	1967	85%	85%

2024-25 Base School	Calendar	Capacity w/ Trailers	2024-25 Util w/ Trailers	2026-27 Util w/ Trailers
Broughton HS	T	2064	102%	101%
Enloe HS	T	2415	110%	109%
Leesville Road HS	T	2477	98%	95%
Southeast Raleigh HS	M	1967	85%	85%

- M-T – Multi-Track Year-Round Calendar
- S-T – Single Track Year-Round Calendar
- T – Traditional Calendar
- Util = Utilization based on building capacity, updated March 2023
- Util w/ Trl = Utilization with Trailers

Existing School – Partnership ES (from Durant Road ES)



Impacted Areas:



Proposed Base Areas

Existing School – Partnership ES (from Durant Road ES)

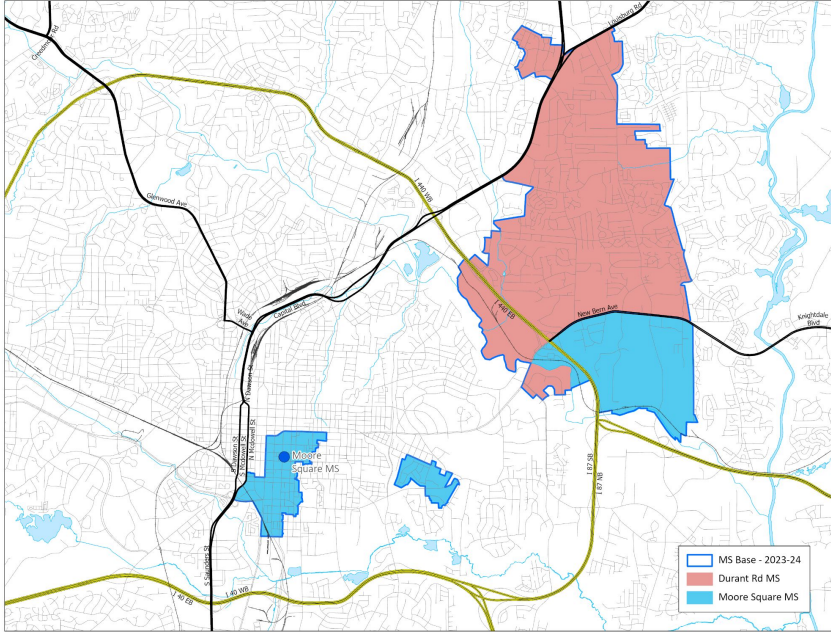
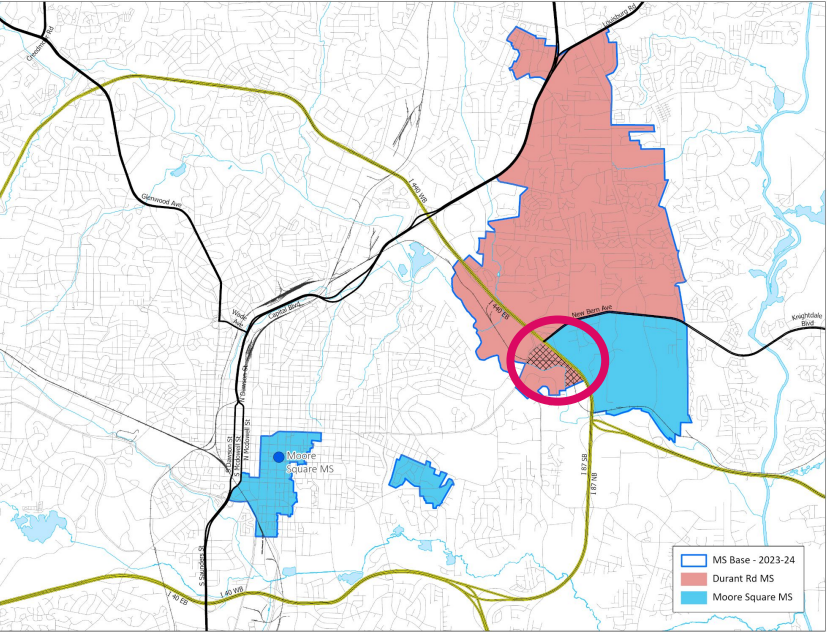
2023-24 Base School	Calendar	Capacity w/ Trailers	2024-25 Util w/ Trailers	2026-27 Util w/ Trailers
Durant Road ES	S-T	768	74%	76%
Partnership ES	M	308	94%	103%

2024-25 Base School	Calendar	Capacity w/ Trailers	2024-25 Util w/ Trailers	2026-27 Util w/ Trailers
Durant Road ES	S-T	768	70%	74%
Partnership ES	M	308	111%	122%

- M-T – Multi-Track Year-Round Calendar
- S-T – Single Track Year-Round Calendar
- T – Traditional Calendar
- Util = Utilization based on building capacity, updated March 2023
- Util w/ Trl = Utilization with Trailers

Durant Road ES is also impacted by another assignment change

Existing School – Moore Square MS (from Durant Road MS)



Impacted Areas: 

Proposed Base Areas

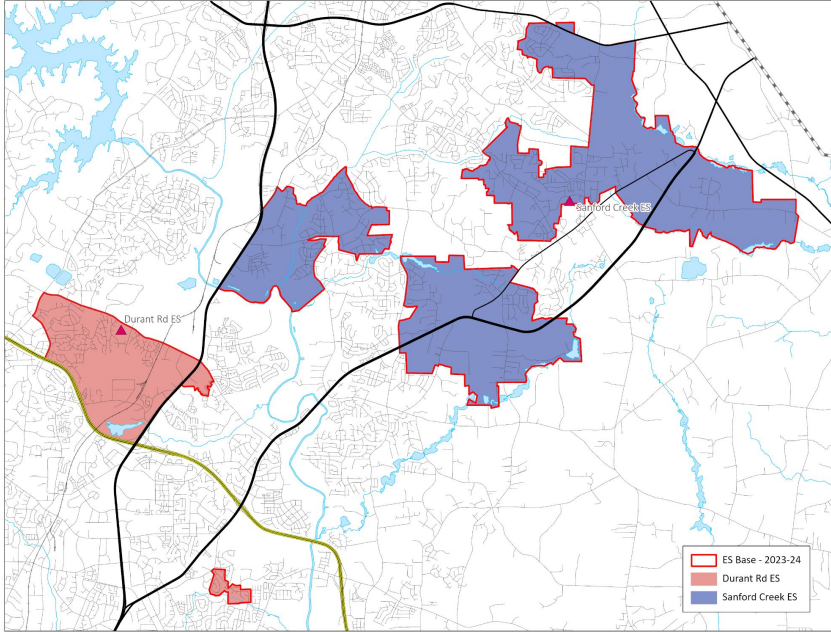
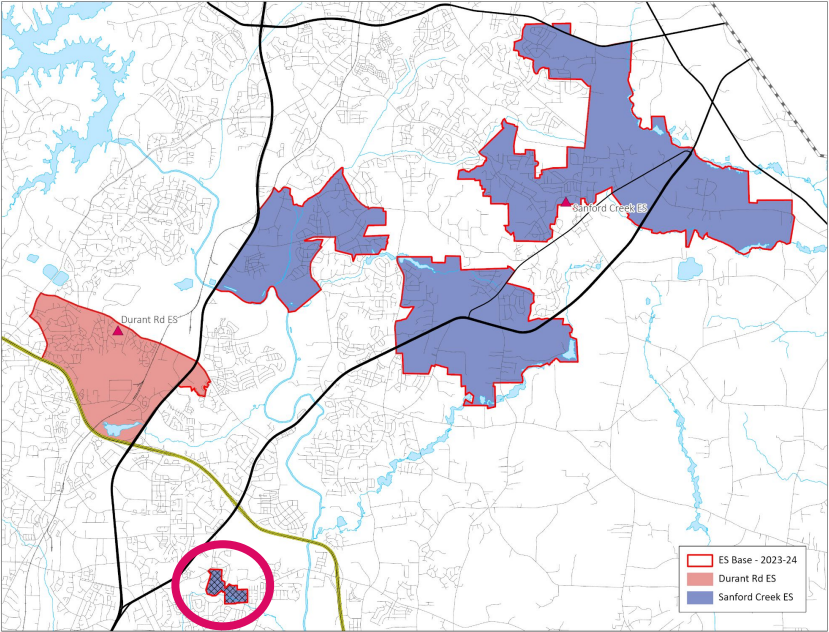
Existing School – Moore Square MS (from Durant Road MS)

2023-24 Base School	Calendar	Capacity w/ Trailers	2024-25 Util w/ Trailers	2026-27 Util w/ Trailers
Durant Road MS	S-T	1144	62%	60%
Moore Square MS	M	624	98%	99%

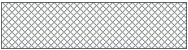
2024-25 Base School	Calendar	Capacity w/ Trailers	2024-25 Util w/ Trailers	2026-27 Util w/ Trailers
Durant Road MS	S-T	1144	56%	55%
Moore Square MS	M	624	108%	109%

- M-T – Multi-Track Year-Round Calendar
- S-T – Single Track Year-Round Calendar
- T – Traditional Calendar
- Util = Utilization based on building capacity, updated March 2023
- Util w/ Trl = Utilization with Trailers

Existing School – Durant Road ES (from Sanford Creek ES)



Impacted Areas:



Proposed Base Areas

Existing School – Durant Road ES (from Sanford Creek ES)

2023-24 Base School	Calendar	Capacity w/ Trailers	2024-25 Util w/ Trailers	2026-27 Util w/ Trailers
Durant Road ES	S-T	768	74%	76%
Sanford Creek ES	M-T	618	104%	113%

2024-25 Base School	Calendar	Capacity w/ Trailers	2024-25 Util w/ Trailers	2026-27 Util w/ Trailers
Durant Road ES	S-T	768	70%	74%
Sanford Creek ES	M-T	618	99%	95%

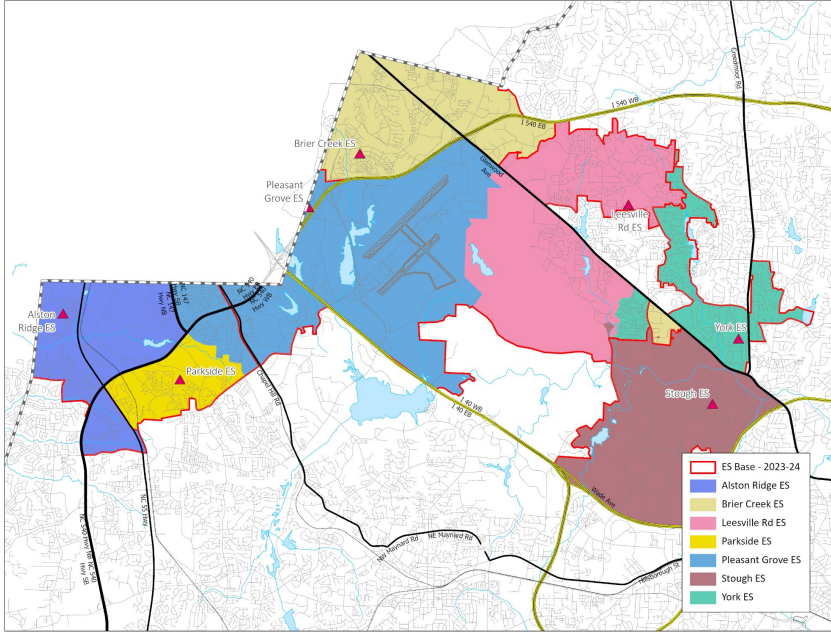
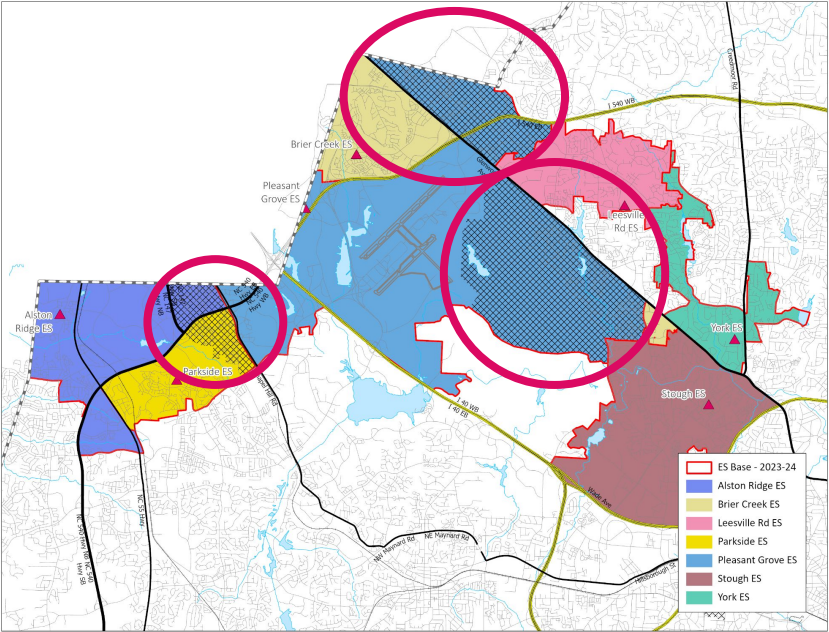
- M-T – Multi-Track Year-Round Calendar
- S-T – Single Track Year-Round Calendar
- T – Traditional Calendar
- Util = Utilization based on building capacity, updated March 2023
- Util w/ Trl = Utilization with Trailers

Durant Road ES is also impacted by another assignment change



Northwestern Area

Existing School – Pleasant Grove ES



Impacted Areas:



Proposed Base Areas

Existing School – Pleasant Grove ES

2023-24 Base School	Calendar	Capacity w/ Trailers	2024-25 Util w/ Trailers	2026-27 Util w/ Trailers
Alston Ridge ES	M-T	996	117%	115%
Brier Creek ES	M-T	736	80%	83%
Leesville Rd ES	T	728	78%	81%
Parkside ES	M-T	814	108%	121%
Pleasant Grove ES	T	616	79%	81%
Stough ES	T	508	110%	111%
York ES	T	616	73%	69%
2024-25 Base School	Calendar	Capacity w/ Trailers	2024-25 Util w/ Trailers	2026-27 Util w/ Trailers
Alston Ridge ES	M-T	996	93%	94%
Brier Creek ES	M-T	736	101%	104%
Leesville Rd ES	T	728	76%	78%
Parkside ES	M-T	814	82%	93%
Pleasant Grove ES	T	616	99%	98%
Stough ES	T	508	110%	111%
York ES	T	616	88%	85%

- M-T – Multi-Track Year-Round Calendar
- S-T – Single Track Year-Round Calendar
- T – Traditional Calendar
- Util = Utilization based on building capacity, updated March 2023
- Util w/ Trl = Utilization with Trailers

Leesville Road ES is also impacted by another assignment change

Existing School – Pleasant Grove ES

2023-24 Base School	Calendar	Capacity w/ Trailers	2024-25 Util w/ Trailers	2026-27 Util w/ Trailers
Alston Ridge ES	M-T	996	117%	115%
Brier Creek ES	M-T	736	80%	83%
Leesville Rd ES	T	728	78%	81%
Parkside ES	M-T	814	108%	121%
Pleasant Grove ES	T	616	79%	81%
Stough ES	T	508	110%	111%
York ES	T	616	73%	69%
2024-25 Base School	Calendar	Capacity w/ Trailers	2024-25 Util w/ Trailers	2026-27 Util w/ Trailers
Alston Ridge ES	M-T	996	93%	94%
Brier Creek ES	M-T	736	101%	104%
Leesville Rd ES	T	728	76%	78%
Parkside ES	M-T	814	82%	93%
Pleasant Grove ES	M-T	814	75%	74%
Stough ES	T	508	110%	111%
York ES	T	616	88%	85%

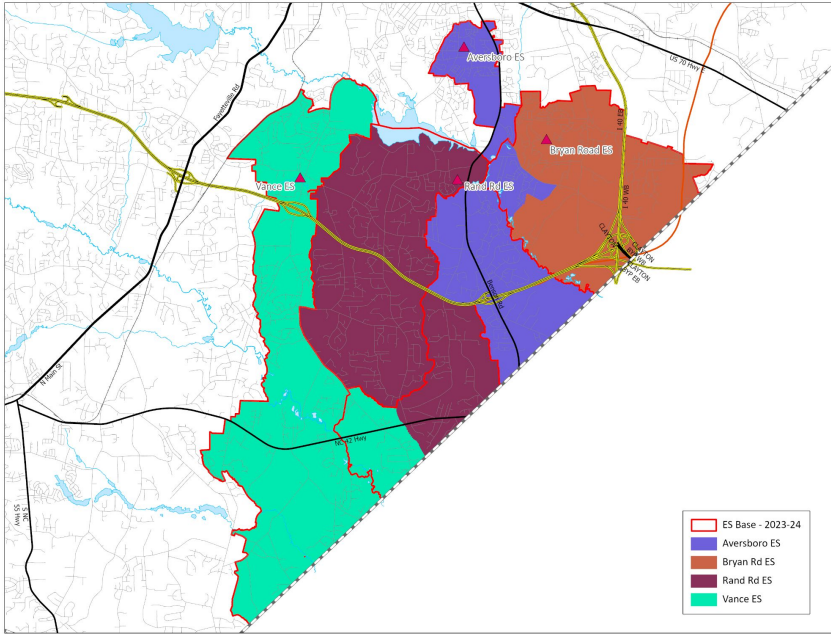
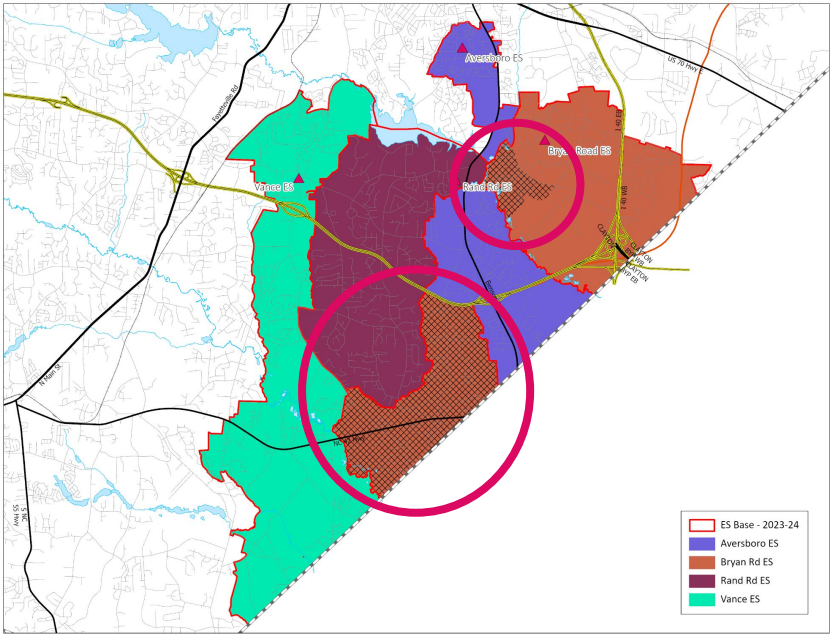
- M-T – Multi-Track Year-Round Calendar
- S-T – Single Track Year-Round Calendar
- T – Traditional Calendar
- Util = Utilization based on building capacity, updated March 2023
- Util w/ Trl = Utilization with Trailers

Leesville Road ES is also impacted by another assignment change

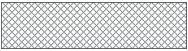


Southeastern Area

Existing School – Aversboro, Rand Road & Vance ES (from Bryan Road ES)



Impacted Areas:



Proposed Base Areas

Existing School – Aversboro, Rand Road & Vance ES (from Bryan Road ES)

2023-24 Base School	Calendar	Capacity w/ Trailers	2024-25 Util w/ Trailers	2026-27 Util w/ Trailers
Aversboro ES	T	588	61%	65%
Bryan Road ES	T	616	121%	133%
Rand Road ES	S-T	550	70%	70%
Vance ES	S-T	428	99%	107%

2024-25 Base School	Calendar	Capacity w/ Trailers	2024-25 Util w/ Trailers	2026-27 Util w/ Trailers
Aversboro ES	T	588	83%	94%
Bryan Road ES	T	616	78%	82%
Rand Road ES	S-T	550	85%	85%
Vance ES	S-T	428	111%	119%

- M-T – Multi-Track Year-Round Calendar
- S-T – Single Track Year-Round Calendar
- T – Traditional Calendar
- Util = Utilization based on building capacity, updated March 2023
- Util w/ Trl = Utilization with Trailers



Recommendations for Calendar Application Changes

Elementary Calendar Application Changes

Current Base	Current Calendar Application School(s)	Proposed Calendar Application School
Adams	Reedy Creek	n/a
Alston Ridge	Green Hope, Hortons Creek**	Green Hope*
Ballentine	Fuquay-Varina	n/a
Carver	Forestville Road	n/a
Creech Road	Rand**, Timber Drive**	n/a
Davis Drive	Salem	n/a
Durant Road	Fox, Wakefield	n/a
East Garner	Creech	n/a
Farmington Woods	Adams	n/a
Forestville Road	Lockhart	n/a
Green Hope	Turner Creek	n/a
Heritage	Richland Creek, Wake Forest	Wake Forest*

* based on address location

**existing students retain transportation

Elementary Calendar Application Changes

Current Base	Current Calendar Application School(s)	Proposed Calendar Application School
Hilburn	Brier Creek	n/a
Hortons Creek	Alston Ridge**	n/a
Jones Dairy	Richland Creek, Rolesville	n/a
Kingswood	Adams**	n/a
Laurel Park	Baucom, Davis Drive, Penny Road	Baucom*
Lockhart	Forestville, Knightdale	Knightdale*
River Bend	Harris Creek	n/a
Rogers Lane	Lake Myra	n/a
Timber Drive	Creech	n/a
Vance	Aversboro	n/a
Wilburn	Beaverdam	n/a
Yates Mill	Adams, Oak Grove	Oak Grove*

* based on address location

**existing students retain transportation

Elementary Calendar Application Changes

Current Base	Current Calendar Application School(s)	Proposed Calendar Application School
Pleasant Grove	Brier Creek	n/a
Brier Creek	Pleasant Grove	n/a
Parkside	Pleasant Grove	n/a
Salem	Baucom, Pleasant Grove	Baucom*

* based on address location

Middle School Calendar Application Changes

Current Base	Current Calendar Application School(s)	Proposed Calendar Application School
Davis Drive	Salem	n/a
Dillard Drive	Lufkin Road, North Garner	Lufkin Road*
Durant Road	East Millbrook, West Millbrook	n/a
East Cary	Lufkin Road, Salem	Salem*
Hilburn Drive	Pine Hollow	n/a
Leesville Road	North Garner, Pine Hollow	Pine Hollow*
Lufkin Road	Apex, Apex Friendship, Dillard, East Cary, Holly Ridge	East Cary*
Rolesville	Wake Forest, Wendell	Wake Forest*
Salem	Apex, Davis Drive	Apex*
West Lake	Dillard Drive, Holly Ridge	Dillard Drive*

* based on address location

**existing students retain transportation



Recommendations for Stability Rules for 2024-2025

Stability Rules: Recommendations

Opening a New School (Woods Creek Elementary)

- Students proposed to be assigned from an existing school to the **NEW Woods Creek Elementary**
 - *Current students rising into 4th or 5th grade are eligible to remain assigned to their current school with transfer status (no transportation) through the terminal grade of the school*
 - *Rising Kindergarten, 1st, 2nd or 3rd siblings of eligible rising 4th and 5th grade students are eligible to join their sibling with transfer status (no transportation) through the terminal grade of the school*

Families potentially impacted by changes included in the adopted plan will be contacted as soon as possible with specific information regarding the process for requesting stability transfers

The online stability transfer request portal will be open for eligible students Nov 29 - Dec 13

Stability Rules: Recommendations *(continued)*

Changing an Existing School's Base Area (Pleasant Grove Elementary)

- Students proposed to be assigned from **Pleasant Grove Elementary** to an existing school
- OR
- Students proposed to be assigned from an existing school to **Pleasant Grove Elementary**
 - *Current students rising into 4th or 5th grade are eligible to remain assigned to their current school with transfer status (no transportation) through the terminal grade of the school*
 - *Rising Kindergarten, 1st, 2nd or 3rd siblings of eligible rising 4th and 5th grade students are eligible to join their sibling with transfer status (no transportation) through the terminal grade of the school*

Families potentially impacted by changes included in the adopted plan will be contacted as soon as possible with specific information regarding the process for requesting stability transfers

The online stability transfer request portal will be open for eligible students Nov 29 - Dec 13

Stability Rules: Recommendations *(continued)*

All other Existing School to Existing School Changes


- Students proposed to be reassigned from an existing school to an existing school

OR

- Students impacted by calendar application changes
 - *Current students impacted by assignment changes (excluding Woods Creek ES and Pleasant Grove ES) are eligible to remain assigned to their current school with transfer status (no transportation) through the terminal grade of the school*
 - *Rising Kindergarten, 6th or 9th grade siblings of eligible students are eligible to join their sibling with transfer status (no transportation) through the terminal grade of the school*

Families potentially impacted by changes included in the adopted plan will be contacted as soon as possible with specific information regarding the process for requesting stability transfers

The online stability transfer request portal will be open for eligible students Nov 29 - Dec 13



The district website will be updated once the final plan is approved by the Board.

For more information and resources, visit:

www.wcpss.net/enroll



Timeline/ Next Steps

Timeline 2024-2025 Enrollment Plan

May 2, 2023 - Initial Planning Discussion [BoE Work Session]

- March-May - Staff hosts regional public engagement sessions
- May-June - Staff continues outreach (website updates, focus groups, etc.)
- May-June - Staff works on developing Draft 1

June 20, 2023 - Update on Progress of Public Engagement [BoE Work Session]

- June-August - Staff continues outreach
- June-September - Staff continues work on developing Draft 1

September 19, 2023 - Presentation of Draft 1 [BoE Work Session]

- September-October - Staff hosts public engagement activities
- October - Staff refines original draft

October 17, 2023 - Presentation of Draft 2 [BoE Work Session]

- October - Staff hosts final public engagement activities
- November - Staff prepares final draft

November 8, 2023 - Public Hearing [Special Called Session]

November 21, 2023 - Presentation of Final Draft for Review [BoE Work Session]

November 21, 2023 - Presentation of Final Plan for Approval [BoE Meeting]

Next Steps for Impacted Families

Following approval of the 2024-2025 Enrollment Plan

- General message sent to **all** WCPSS families notifying them of the approved plan
- Specific message sent to families **directly impacted** by the approved changes (instructions regarding stability transfer process included for eligible students)
- **Stability Transfer application available November 29 - December 13***
- Principals with impacted students receive information to help them support families
- Assignment notifications* sent to families the week of December 11

**due to printing deadlines, printed assignment notifications will NOT reflect the results of stability transfer requests*

Next Steps for Application Processes

- October 14, 2023 - Early College Fair
- October 16, 2023 - Pre-registration Opens for 2024-2025
 - Magnet/ Year-round Application Opens
 - Early College Application Opens
- November 4, 2023 - Magnet and Early College Fair
- **November 29 through December 13, 2023 - Stability Transfer Application Period**
- December 14, 2023 - Early College Application Closes
- January 25, 2024 - Magnet/ Year-round Application Closes
- February 22, 2024 - Early College, Magnet & Year-round Results Posted
- February 26 through March 1, 2024 - Magnet Welcome Week
- March 4 through March 15, 2024 - Official Request for Transfer Application Period



Questions & Discussion



Addendum

Board Policy 4150, Detail Maps, Prior Presentations

Board Policy 4150: Drawing of School Attendance Areas

Student Achievement	Stability	Proximity	Operational Efficiency
<i>To the extent practicable...</i>			
<p>student populations at each school will provide an optimal opportunity for academic success for all students</p>	<p>a student rising into a terminal grade (5th, 8th, 12th) who is reassigned will be provided an opportunity to stay at the current school for at least one additional year, siblings will also be provided an opportunity to attend for at least the one year period</p>	<p>base school assignments will be within a reasonable distance of the student's home</p>	<p>assignments will optimize the use of school facilities and transportation resources</p>
<i>Factors for consideration include:</i>			
<ul style="list-style-type: none"> • opportunity to apply to designated application schools • minimize high concentrations of low-performing students • minimize high concentrations of students from low income families 	<ul style="list-style-type: none"> • additional opportunities to remain at the current school, including for siblings, may be included in the annual student enrollment plan • Early College and Magnet application assignments are valid through the terminal grade of the school 	<ul style="list-style-type: none"> • allow students living within the immediate vicinity of a school, defined by the assignment plan, to attend that school • minimize splitting of neighborhoods when developing base attendance areas 	<ul style="list-style-type: none"> • minimize under-enrolled schools • minimize over-crowded schools • maximize transportation efficiencies

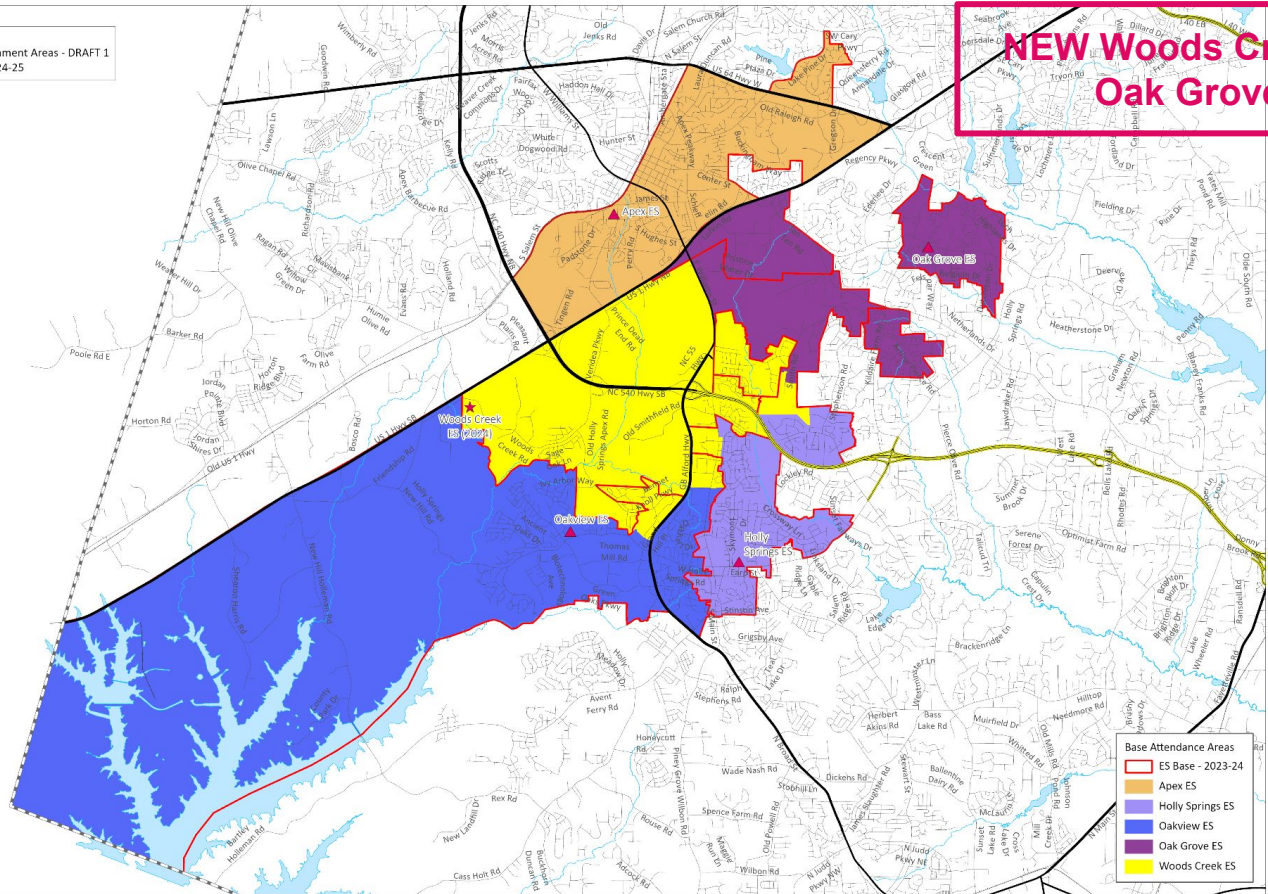


Detail Maps

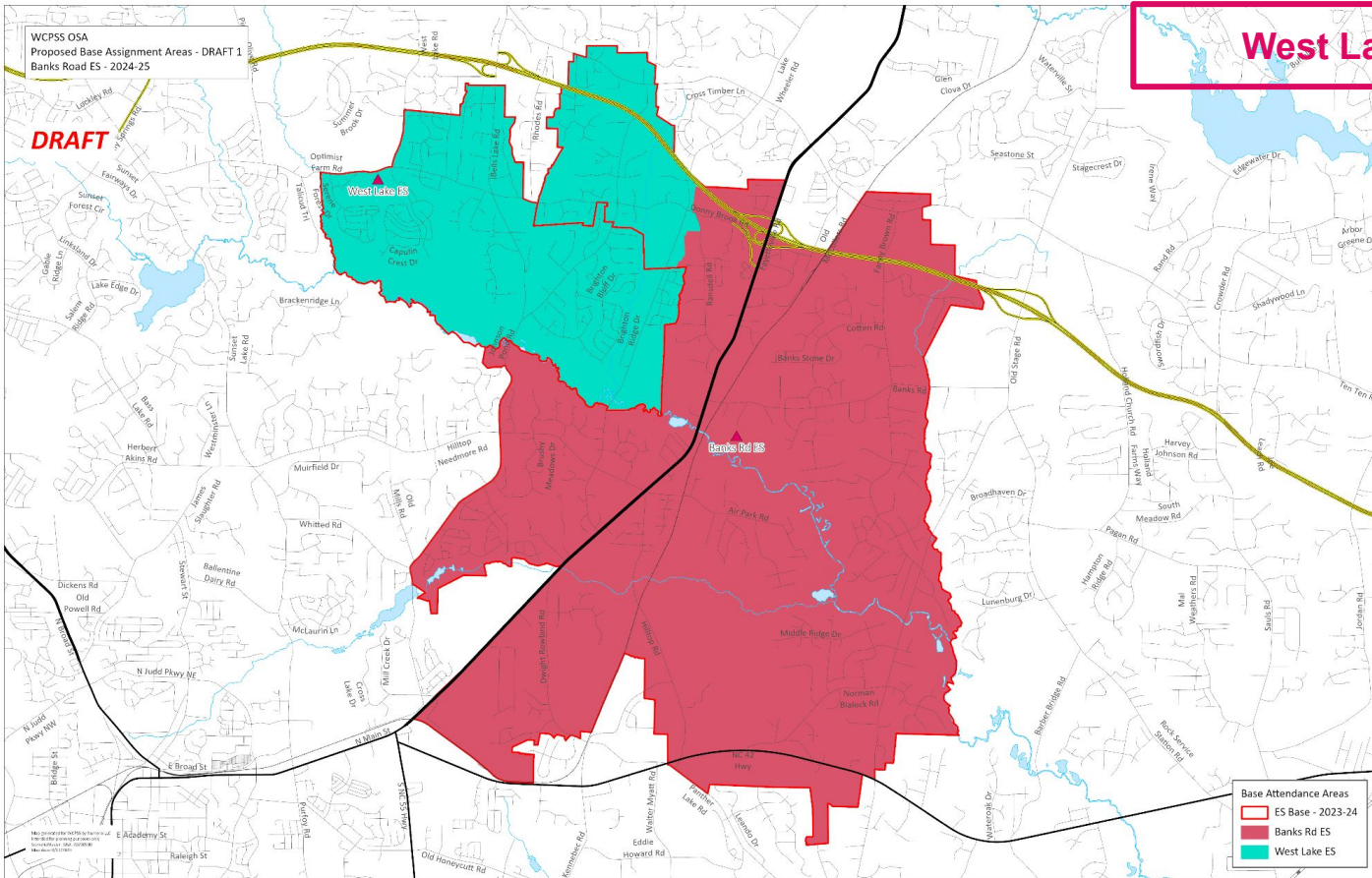
WCPSS OSA
Proposed Base Assignment Areas - DRAFT 1
Woods Creek ES - 2024-25

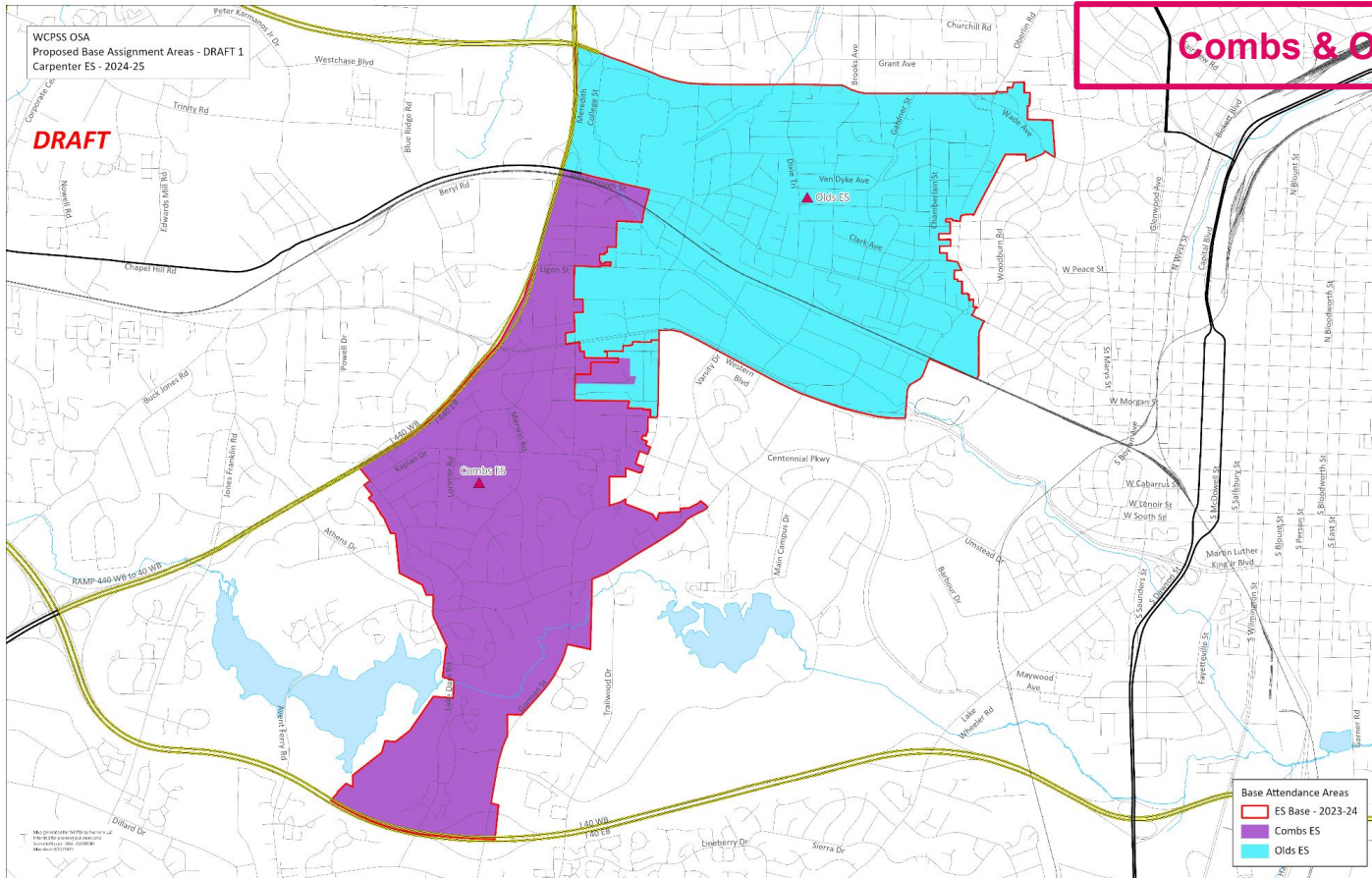
DRAFT

NEW Woods Creek ES & Oak Grove ES



Map provided by WCPSS GIS Services
Last updated: 10/20/2023
Map Scale: 1:50,000
Map Date: 10/20/2023

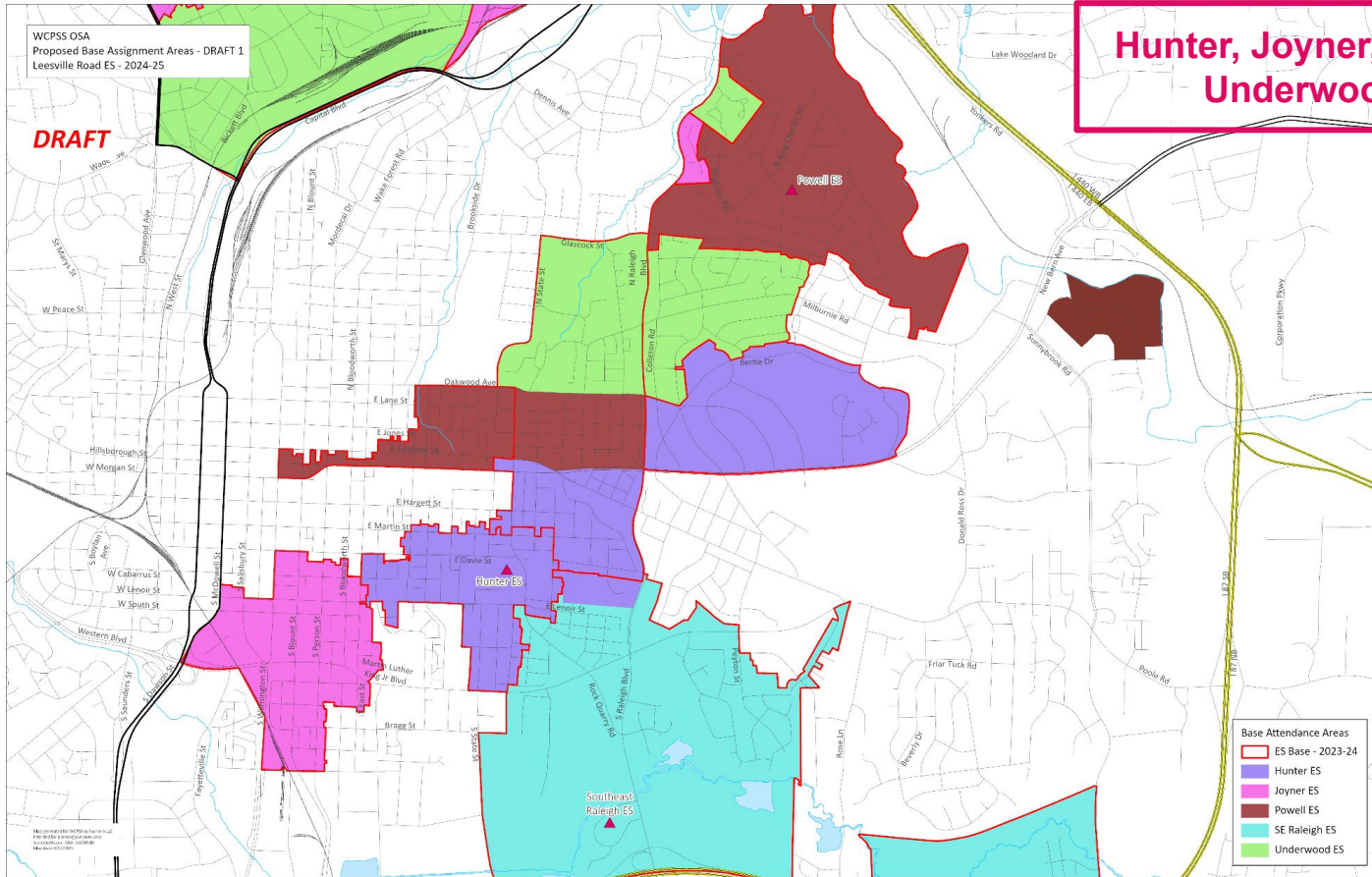




WCPSS OSA
Proposed Base Assignment Areas - DRAFT 1
Leesville Road ES - 2024-25

DRAFT

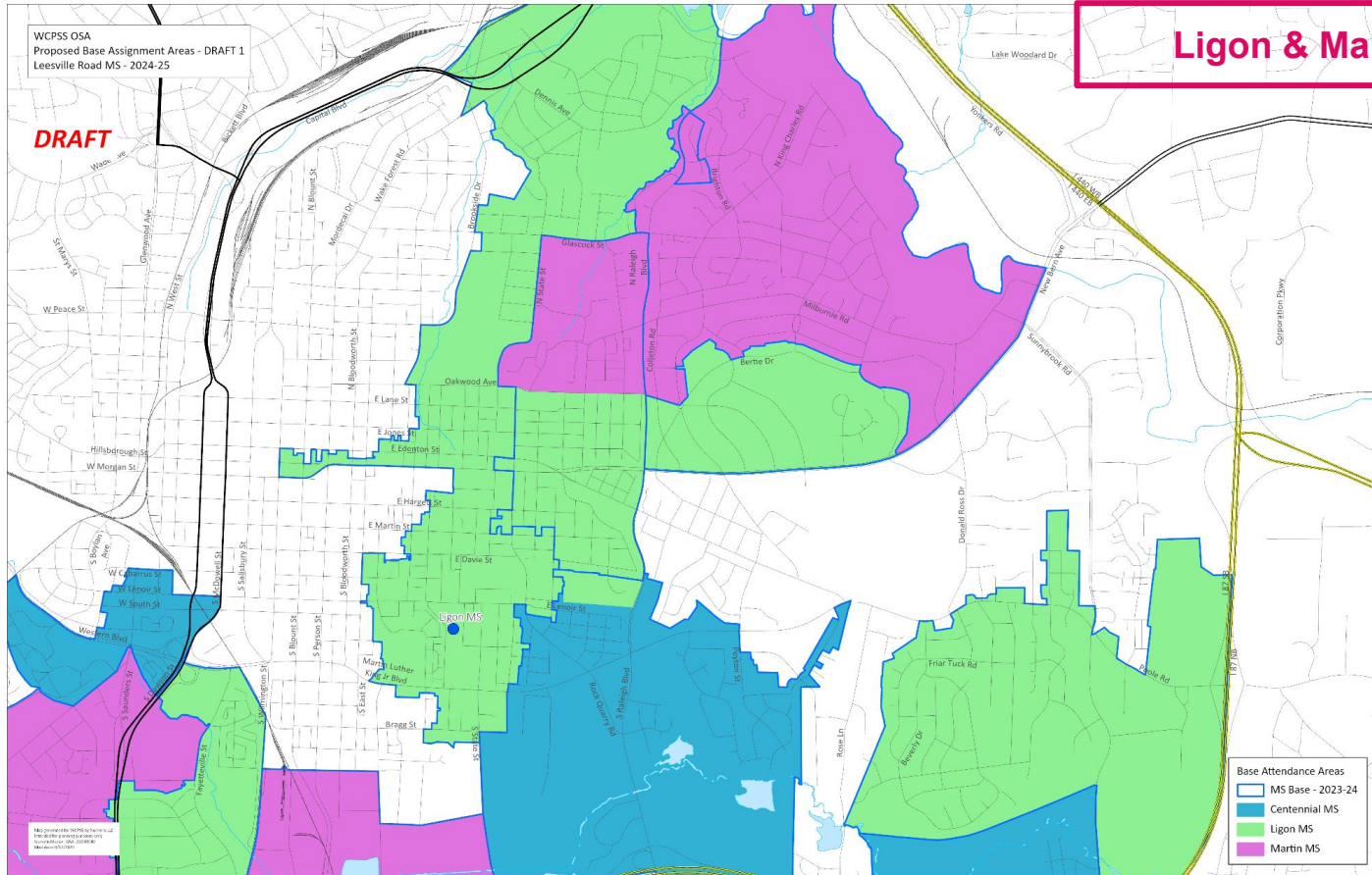
Hunter, Joyner, Powell, & Underwood ES



WCPSS OSA
Proposed Base Assignment Areas - DRAFT 1
Leesville Road MS - 2024-25

DRAFT

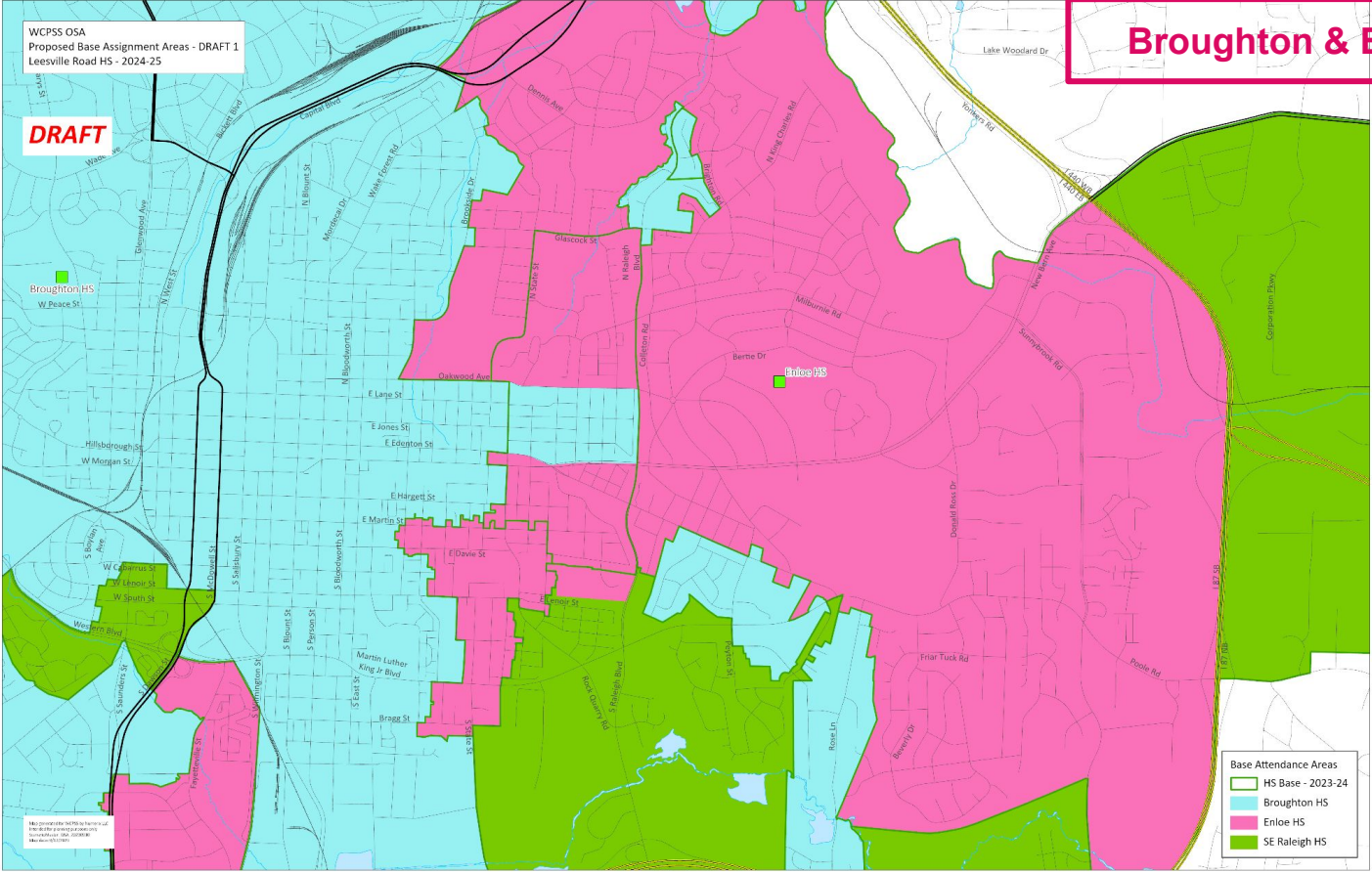
Ligon & Martin MS

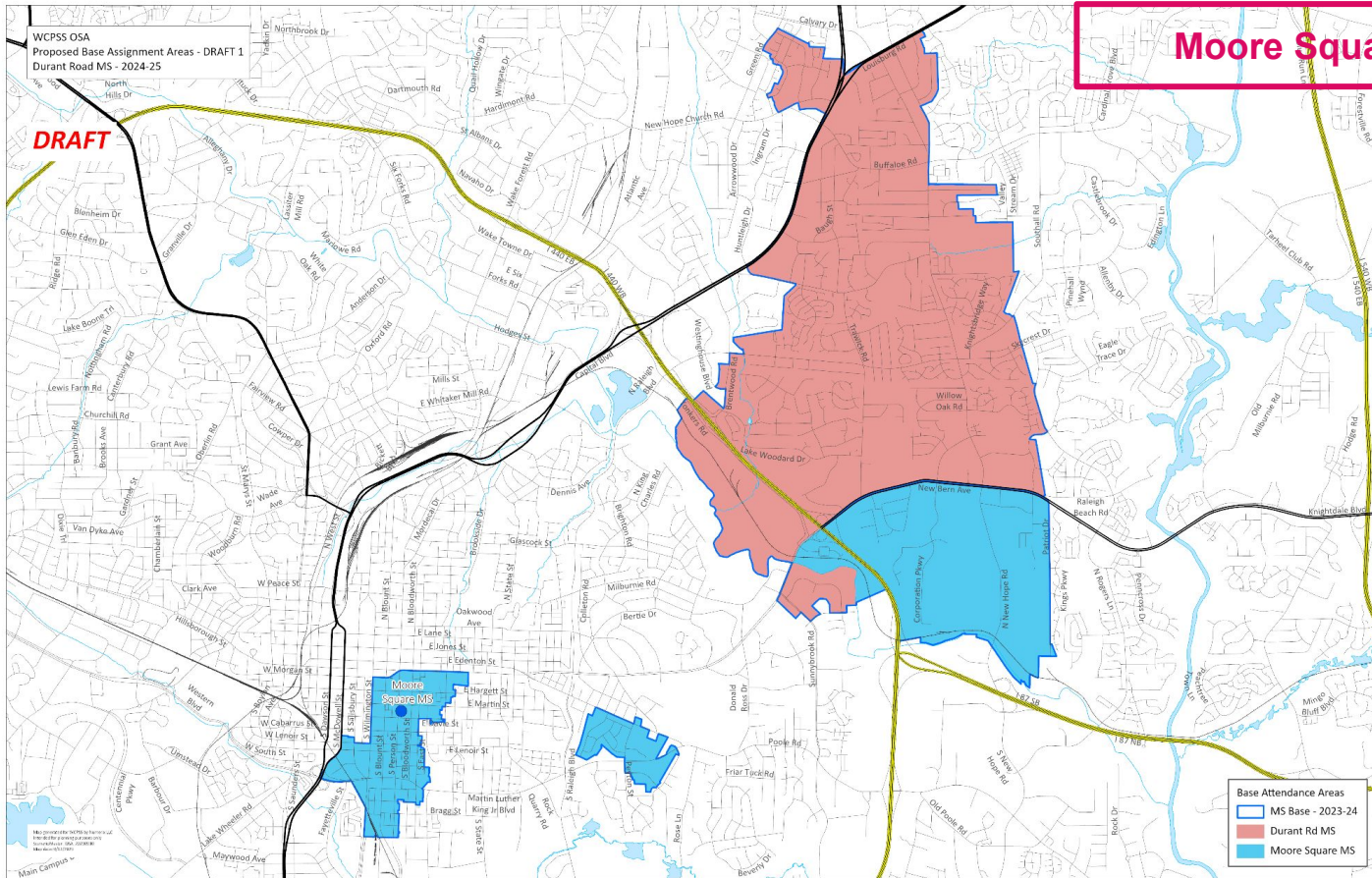


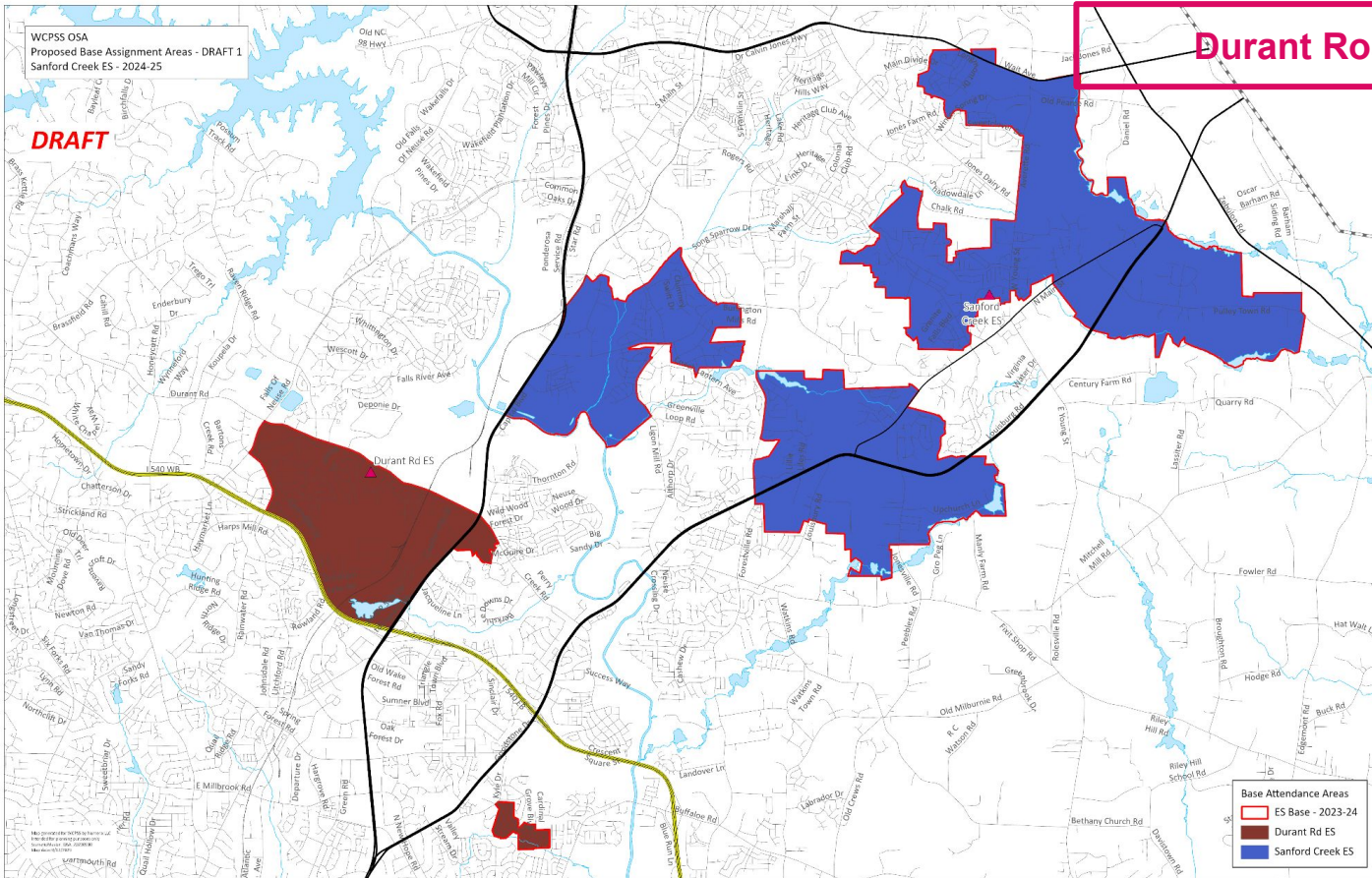
WCPSS OSA
Proposed Base Assignment Areas - DRAFT 1
Leesville Road HS - 2024-25

DRAFT

Broughton & Enloe HS

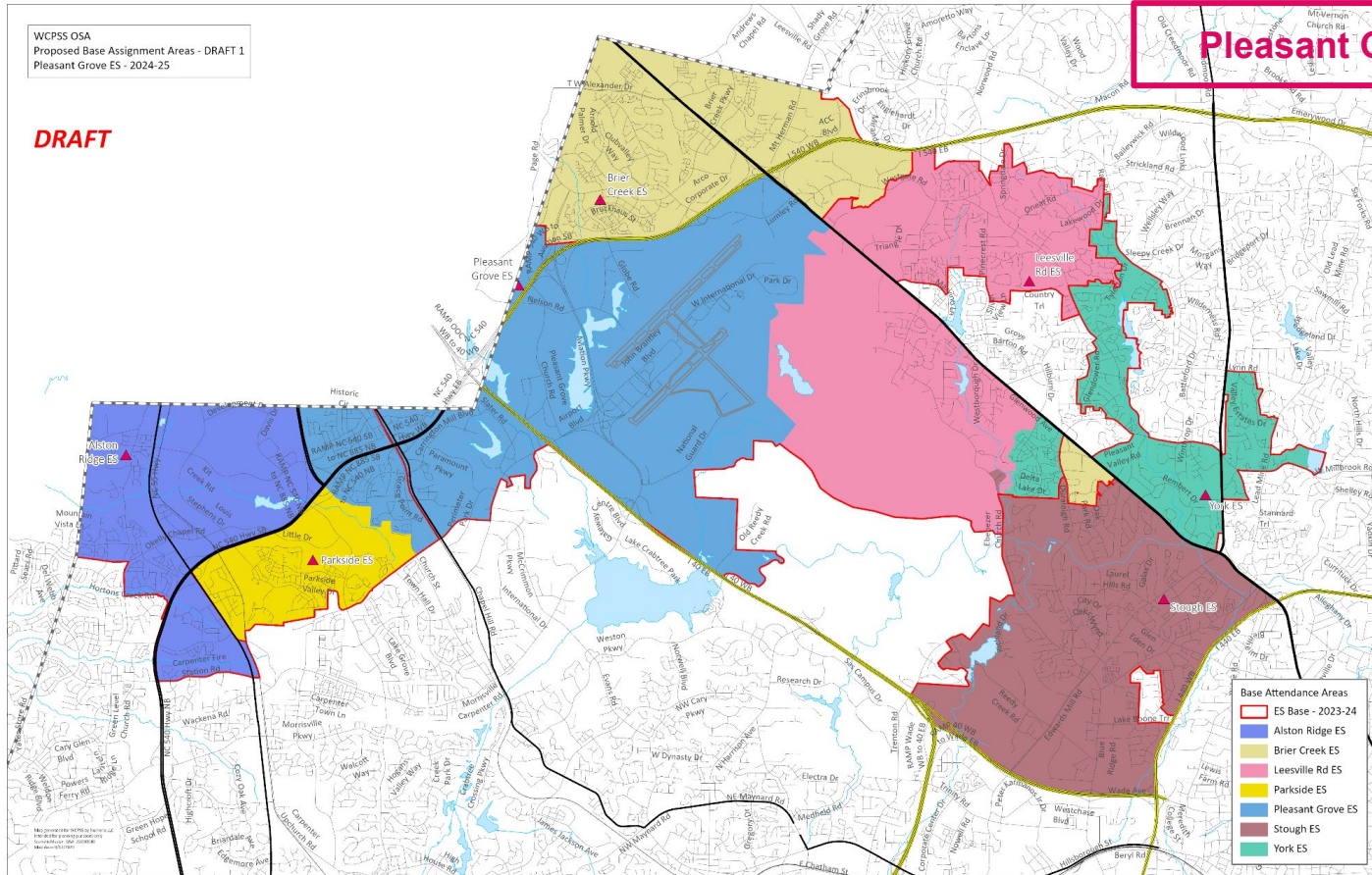


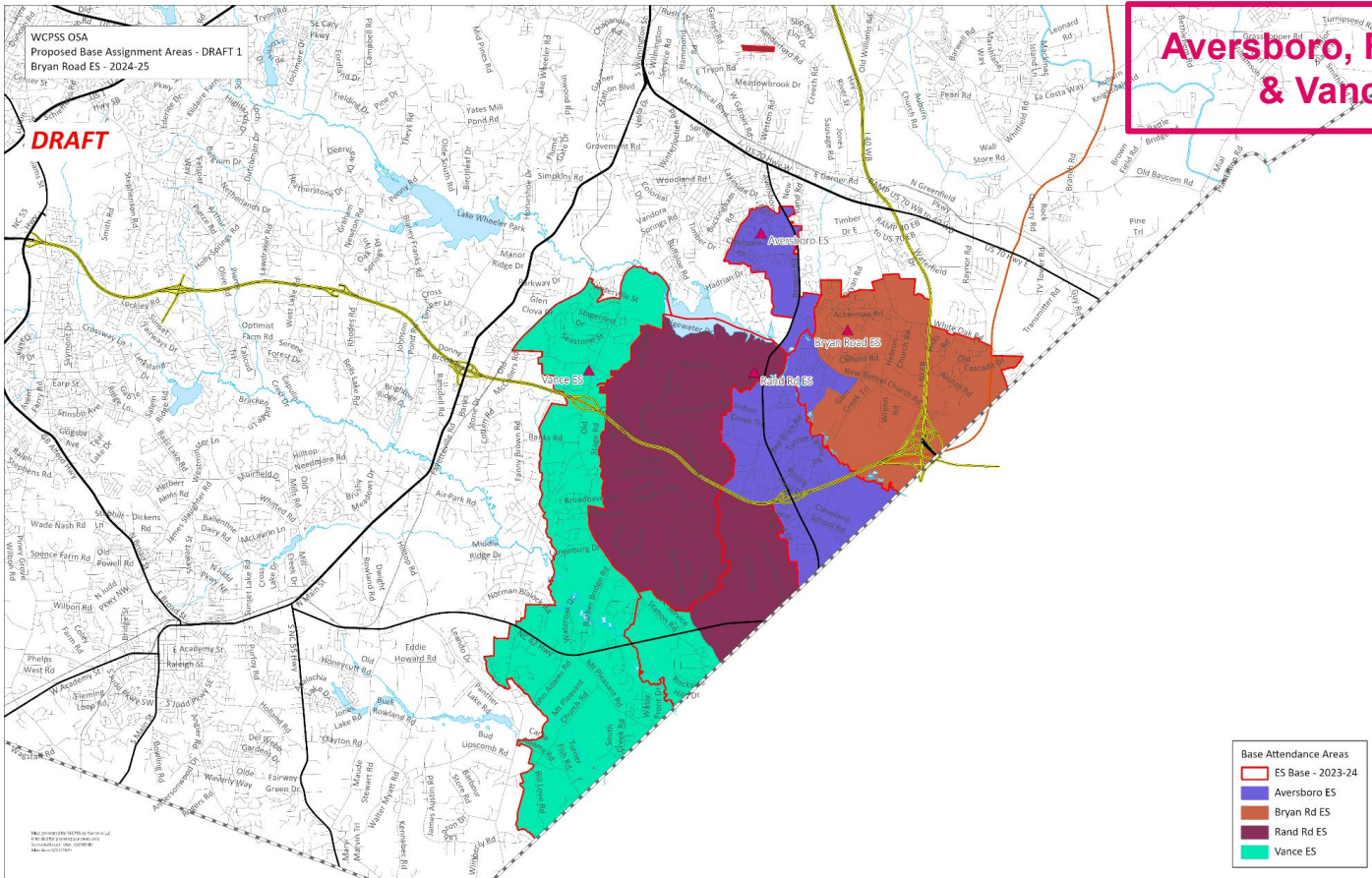




Durant Road ES

DRAFT





Prior Presentations

Included in the Agenda Attachments for the Work Session:

- Draft #2: WCPSS 2024-2025 Enrollment Plan (pdf file)
 - Original presentation as shared during the Board Work Session on October 17, 2023
- Draft #1: WCPSS 2024-2025 Enrollment Plan (pdf file)
 - Original presentation as shared during the Board Work Session on September 19, 2023, **with technical corrections included**

Note: Base Population Report and School Population Report previously posted with September 19, 2023 Board materials