

A photograph of two young women in a classroom. They are looking at a whiteboard. The woman in the foreground has long brown hair and is wearing a white shirt. She is holding a yellow pencil. The woman behind her is wearing glasses and a maroon shirt. The whiteboard has some papers and a large blue arrow pointing upwards. The background shows a classroom with desks and windows.

# Office of Student Assignment

# WCPSS 2025-2026 School Enrollment Plan

*Initial Draft*

*A Multi-year Approach to Growth Management*

Board of Education Work Session  
September 3, 2024

# Purpose

Staff is here today to share the initial draft of the 2025-2026 school enrollment plan.

Our goals for today's session are to:

- Share information related to the development of the initial draft
- Review the recommendations included in the initial draft
- Provide an overview of the next phase of public engagement for this plan
- Seek additional feedback, thoughts and ideas from the Board related to the enrollment planning process

# Strategic Plan Alignment

## Family & Community Engagement

### **Aim 6: District Communications Structures**

Provide clear, accessible, and consistent information about family involvement opportunities.

### **Aim 12: Community Engagement**

Build strong relationships among staff, families, and community organizations in order to share resources and promote well-being.

#### **12.1 Increase support of non-English speaking families**

Ensure multilingual and non-English speaking families and all schools are aware of the support and services available from the district to help them engage fully with their school and our district.

#### **12.2 Build strong community partnerships**

Develop and share with district leaders a systemic approach to building partnerships with and seeking input and support from community organizations with a focus on partners in underserved communities.

# Strategic Plan Alignment

*(continued)*

## Operational Effectiveness

### **Aim 14: Differentiated Resource Allocation**

Differentiate resource allocation to provide PreK-12 students with equitable access to high-quality teachers and principals, and sufficient support services.

#### **14.3 Evaluate School Choice, Planning and Assignment Programs**

Evaluate student assignment policy, practices, and magnet programs to foster the balance and socio-economic integration of schools, in alignment with the magnet objectives of reducing high concentrations of poverty, promoting school integration and diversity, maximizing use of school facilities, and providing innovative and/ or expanded educational opportunities.

### **Aim 19: Transportation Upgrades**

Evaluate practices to ensure safe, timely, efficient, and reliable transportation services.

#### **19.2 Incorporate Bus Routing in Student Assignment Decisions**

Problem-solve bus route challenges with strategic student assignment changes.

# Policy Alignment

## WCPSS Board Policy 4150: School Assignment and Transfers



## Section A. Drawing of School Attendance Areas

1. The assignment areas will be developed by balancing, to the extent reasonable, the goals and factors set forth below and will include target ranges, where appropriate, to accomplish these goals and factors:
  - a. **Student Achievement**
  - b. **Stability**
  - c. **Proximity**
  - d. **Operational Efficiency**

# WCPSS Board Policy 4150 *(continued)*

## **Student Achievement\***

- To the extent practicable, student populations at each school will provide an optimal opportunity for academic success for all students

## **Stability\***

- To the extent practicable, a student rising into a terminal grade (5th, 8th, 12th) who is reassigned will be provided an opportunity to stay at the current school for at least one additional year, siblings will also be provided an opportunity to attend for at least the one year period

## **Proximity\***

- To the extent practicable, base school assignments will be within a reasonable distance of the student's home

## **Operational Efficiency\***

- To the extent practicable, assignments will optimize the use of school facilities and transportation resources

*\*Note: Additional policy language is included in the addendum*

# Overview

- **Review & Updates**

- Overview of Planning Process, including a Review of Public Engagement Progress

- **Initial Draft of 2025-26 School Enrollment Plan**

- Recommendations Related to the Opening of New Schools
- Recommendations Addressing School Choice Options
- Recommendations for Calendar Application Changes to Support Transportation Efficiency
- Recommendations for Stability Rules for 2025-2026

- **Planning Timeline & Next Steps**

- **Addendum**

# Review & Updates

## Information & Updates

[www.wcpss.net/2025enrollmentproposal](http://www.wcpss.net/2025enrollmentproposal)

[www.wcpss.net/assignmentplanning](http://www.wcpss.net/assignmentplanning)

# Overview of Planning Process, Including a Review of Public Engagement Progress

# Presentation of the Annual Enrollment Forecast (1-year and 10-year projections)

Review

1

Presentation of the Annual Enrollment Forecast (1-year and 10-year projections)

2

Review of Projected Crowding for the Next School Year

3

Review of Capital Improvement Plan (CIP) Updates (7-year plan)

4

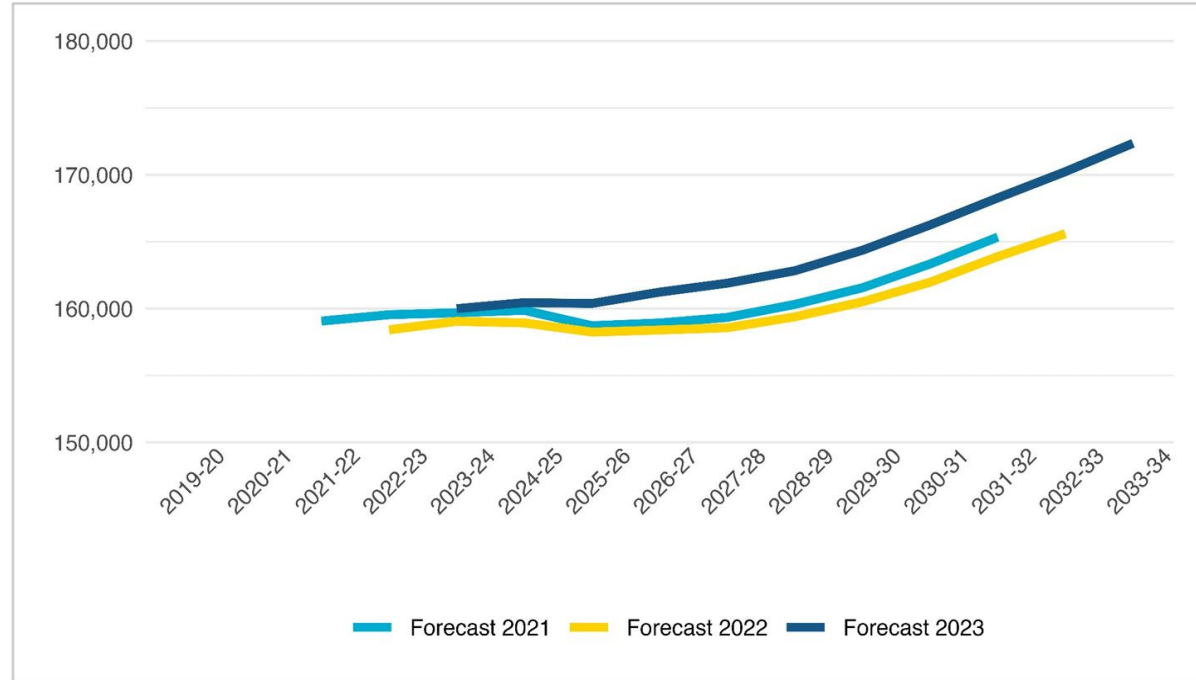
Preparation of the Annual Enrollment Plan

5

Review and Approval of Capped Schools due to Overcrowding Concerns

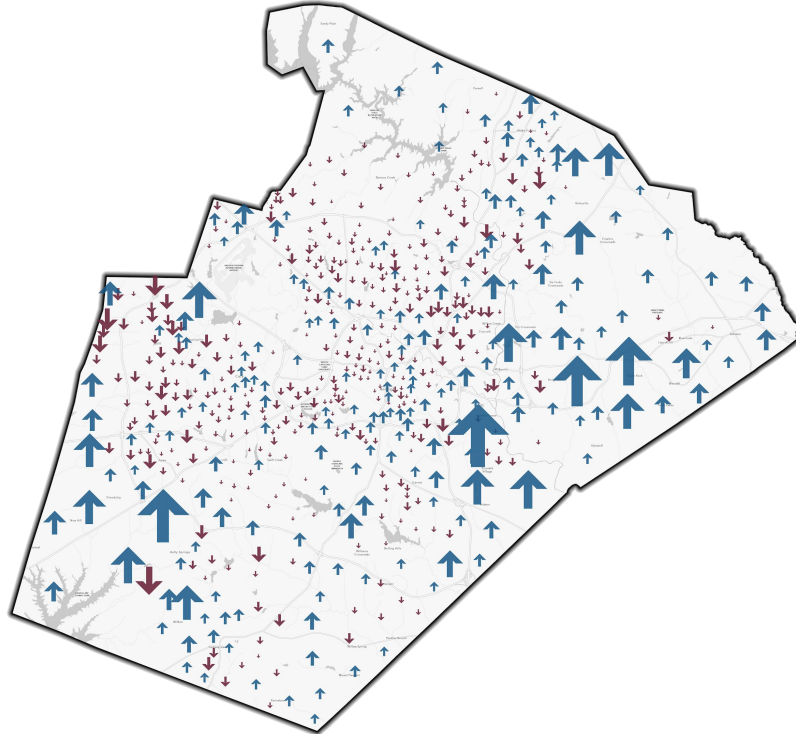
6

Review of Options to Address Other School Utilization Concerns



# Projected Enrollment Change: 2024 to 2033

Review



10 Year Student Membership Forecast  
Projected Enrollment Change 2024 to 2033

↑ > 250  
↑ 0  
↓ < -180

Total K-12 Projected Enrollment	
2024	160,445 students
2033	172,357 students

WAKE COUNTY PUBLIC SCHOOL SYSTEM

# Review of Projected Crowding for the Next School Year

Review

1

Presentation of the Annual Enrollment Forecast (1-year and 10-year projections)

2

Review of Projected Crowding for the Next School Year

3

Review of Capital Improvement Plan (CIP) Updates (7-year plan)

4

Preparation of the Annual Enrollment Plan

5

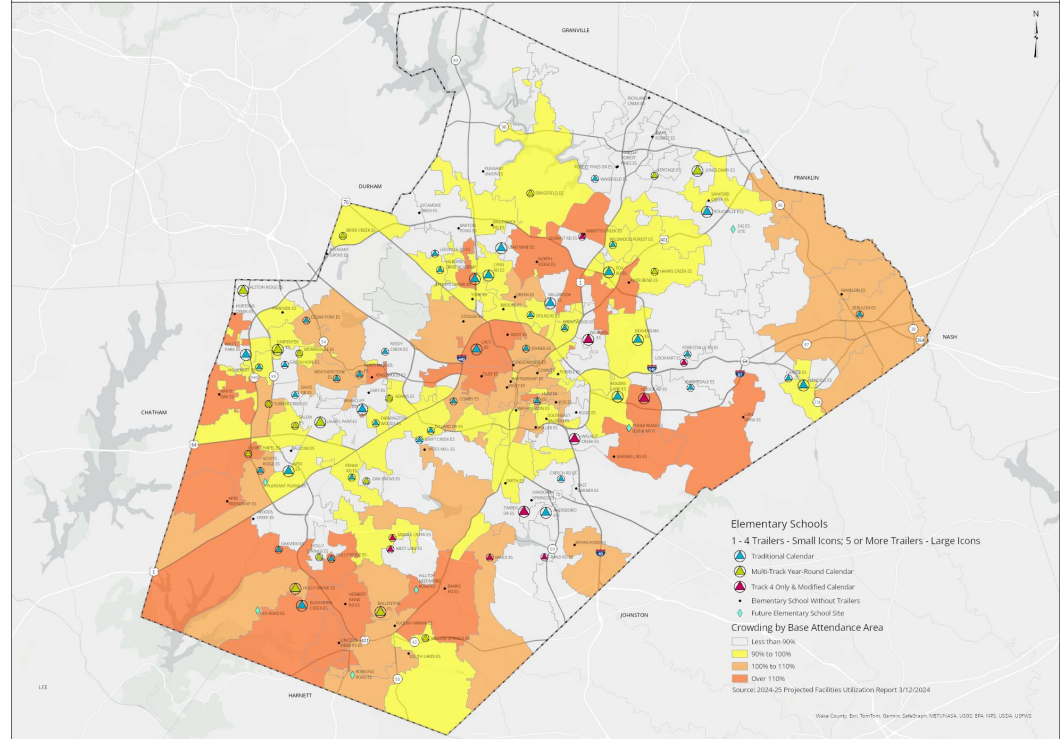
Review and Approval of Capped Schools due to Overcrowding Concerns

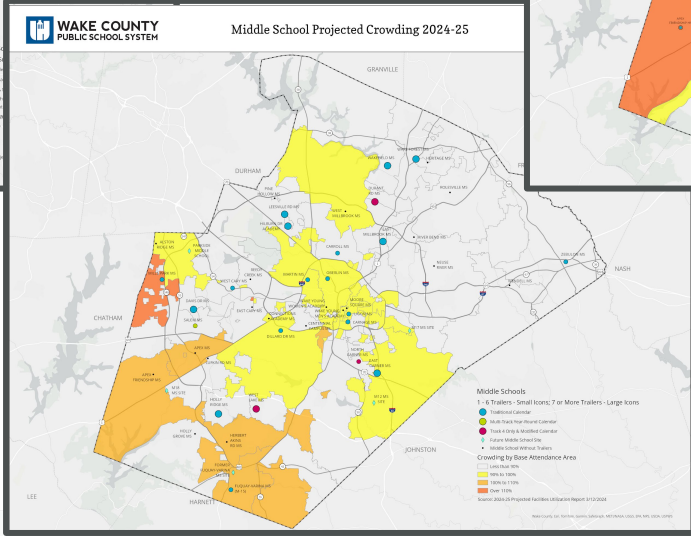
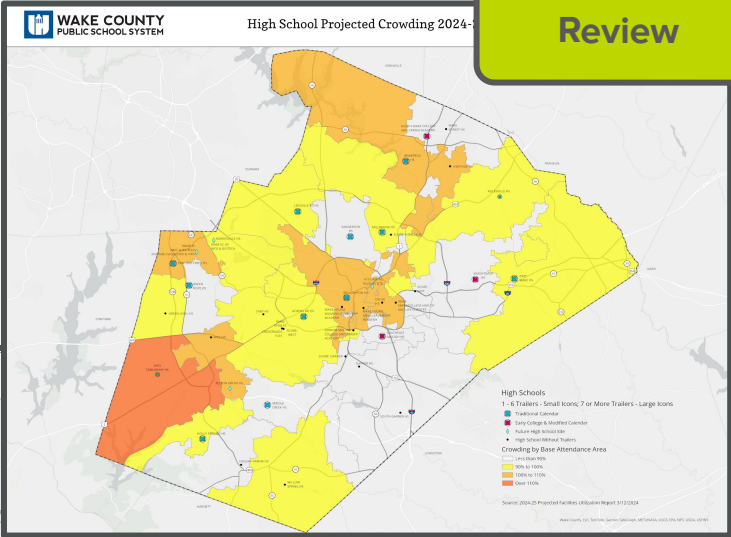
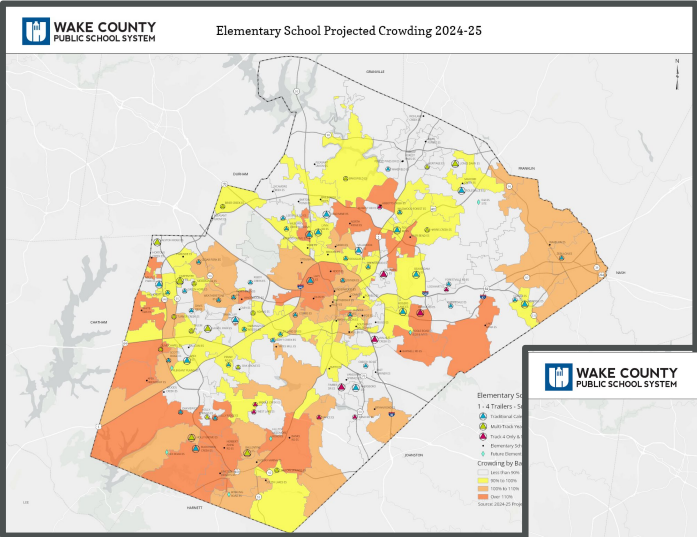
6

Review of Options to Address Other School Utilization Concerns



Elementary School Projected Crowding 2024-25





# Review of Capital Improvement Plan (CIP) Updates (7-year plan)

Update

1

Presentation of the Annual Enrollment Forecast (1-year and 10-year projections)

2

Review of Projected Crowding for the Next School Year

3

Review of Capital Improvement Plan (CIP) Updates (7-year plan)

4

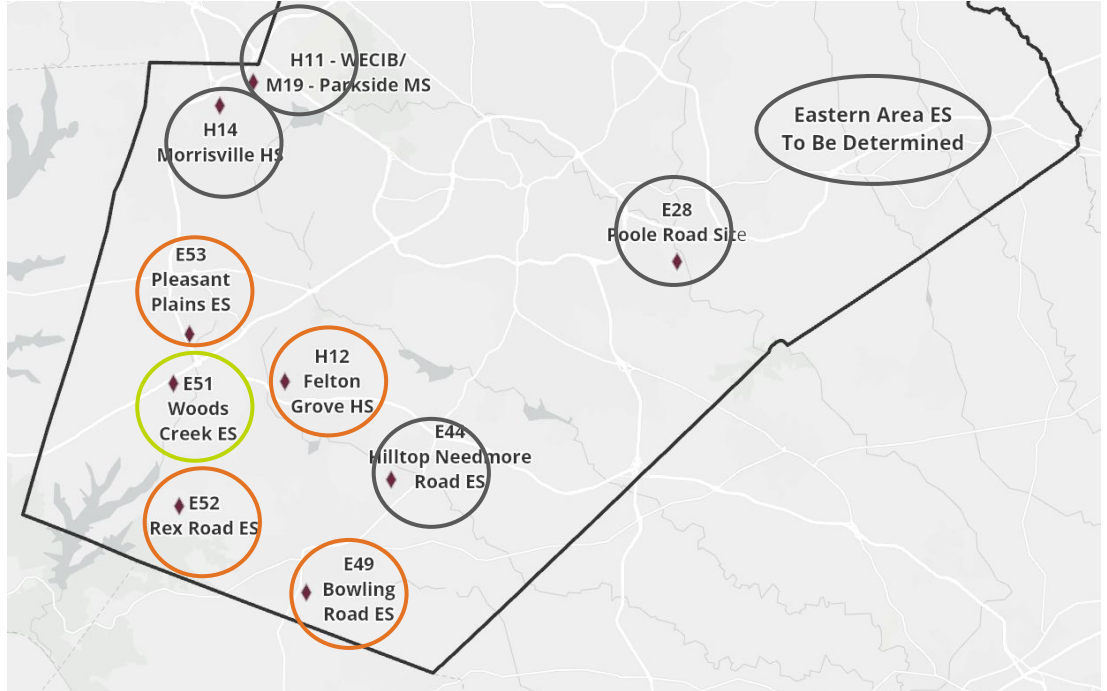
Preparation of the Annual Enrollment Plan

5

Review and Approval of Capped Schools due to Overcrowding Concerns

6

Review of Options to Address Other School Utilization Concerns



School Name	2024-25	2025-26	2026-27	2027-28	2028-29	2029-30	2030-31
Woods Creek ES	E51 / 920623						
Bowling Road ES		E49 ES*					
Pleasant Plains ES		E53 ES*					
Rex Road ES		E52 ES*					
Felton Grove HS		H12 HS*					
Hilltop Needmore ES	E44 ES*	E44 ES*	E44 ES*				
Morrisville HS				H14 HS*			
NEW (Parkside) MS/ Wake EC of Infor. & Biotech.					M19 MS/ H11 EC*		
Eastern Wake ES						TBD*	TBD*
Raleigh Area ES							TBD*
New School: A new school opened/ opening in the current school year that already has an approved attendance area.							
New School: A new school opening with a unique base attendance area that requires an approved attendance area.							
Swing Space: A new school serving as a swing space for an existing school's renovation before opening with its own population.							
Future School: A new future school site that will open with a unique base attendance area.							

**Update**



# Preparation of the Annual Enrollment Plan

1

Presentation of the Annual Enrollment Forecast (1-year and 10-year projections)

2

Review of Projected Crowding for the Next School Year

3

Review of Capital Improvement Plan (CIP) Updates (7-year plan)

4

Preparation of the Annual Enrollment Plan

5

Review and Approval of Capped Schools due to Overcrowding Concerns

6

Review of Options to Address Other School Utilization Concerns

1. Public engagement to capture thoughts and ideas to support the development of the next enrollment plan
2. Review of goals for the next enrollment plan with the Board
3. Presentation of an initial draft of the enrollment plan
4. Public engagement to help families review and understand the recommendations in the initial draft plan
5. Review of public feedback with the Board and presentation of any recommended revisions to the initial draft
6. Public hearing on the draft enrollment plan by the Board
7. Presentation of final draft of the enrollment plan for the Board's review and approval

# Preparation of the Annual Enrollment Plan

1

Presentation of the Annual Enrollment Forecast (1-year and 10-year projections)

2

Review of Projected Crowding for the Next School Year

3

Review of Capital Improvement Plan (CIP) Updates (7-year plan)

4

Preparation of the Annual Enrollment Plan

5

Review and Approval of Capped Schools due to Overcrowding Concerns

6

Review of Options to Address Other School Utilization Concerns

1. Public engagement to capture thoughts and ideas to support the development of the next enrollment plan
2. Review of goals for the next enrollment plan with the Board
3. Presentation of an initial draft of the enrollment plan
4. Public engagement to help families review and understand the recommendations in the initial draft plan
5. Review of public feedback with the Board and presentation of any recommended revisions to the initial draft
6. Public hearing on the draft enrollment plan by the Board
7. Presentation of final draft of the enrollment plan for the Board's review and approval

March  
- May

# Information & Updates

[www.wcpss.net/2025enrollmentproposal](http://www.wcpss.net/2025enrollmentproposal)

[www.wcpss.net/assignmentplanning](http://www.wcpss.net/assignmentplanning)

Review

## Spring Public Engagement: Participation

Future School	Session Date	# Participants
<b>Bowling Road ES</b> <i>@ Lincoln Heights Magnet ES</i>	April 11	5
<b>Felton Grove HS</b> <i>@ Apex HS</i>	March 14	96
<b>Hilltop Needmore ES</b> <i>@ Banks Road ES</i>	April 3	14
<b>Parkside MS</b> <i>@ Alston Ridge MS</i>	April 17	35
<b>Pleasant Plains ES</b> <i>@ Scotts Ridge ES</i>	March 20	45
<b>Rex Road ES</b> <i>@ Buckhorn Creek ES</i>	March 7	18
<b>General Session</b> (virtual) <i>Northern &amp; Eastern Regions</i>	May 8	68
<b>General Session</b> (virtual) <i>Southern &amp; Western Regions</i>	May 9	52
<b>Totals</b>		<b>333</b>

## Increased Participation from 2024-2025 Process



75% Participants

## Spring Public Engagement: *Core Questions*

What are the most important things that district leadership should be aware of and take into consideration when...

- ...opening a new school in your community?
- ...managing enrollment growth and school crowding?

# Spring Public Engagement: *Key Takeaways*

## Traffic and Congestion Concerns

- Be mindful of increased traffic and congestion near new schools and specific intersections

## Calendar Alignment

- Consider the need for K-8 calendar alignment for families to provide continuity and ease family scheduling

## Stability and Cohort Continuity

- Allow siblings to be assigned to the same school and work to keep student cohorts together as they progress through grades

## Proximity and Walkability

- Ensure students who live within safe walking or biking distance to their current school can remain assigned there

## Impact of Reassignments on Families

- Consider the mental health and logistical impacts on families due to reassignments and provide sufficient lead time for adjustments

## Equity of Academic Programs

- Maintain equity in academic programs and extracurricular activities across new and existing schools

## Spring Public Engagement: *Key Takeaways (continued)*

### Quality of Education and Resources

- Ensure the new school and existing schools have high-quality teachers and resources to maintain educational standards

### Assignment and Transportation Efficiency

- Develop efficient bus routes and minimize long bus rides for students, particularly young ones

### Consideration of Existing Community Bonds

- Keep existing communities and neighborhoods together when assigning students to new schools to preserve established relationships

### Notification and Options for Families

- Clarify the options available to families for school assignments and provide timely information about changes and schedules

## Spring ThoughtExchange: Participation

Session	ThoughtExchange*	
	# Participants	# Thoughts
Bowling Road ES	155	97
Felton Grove HS	578	332
Hilltop Needmore ES	256	208
Parkside MS	1044	720
Pleasant Plains ES	846	672
Rex Road ES	210	165
<b>General Session</b> (virtual) <i>Northern &amp; Eastern Regions</i>	222	136
<b>General Session</b> (virtual) <i>Southern &amp; Western Regions</i>		
<b>Totals</b>	<b>3,311</b>	<b>2,330</b>

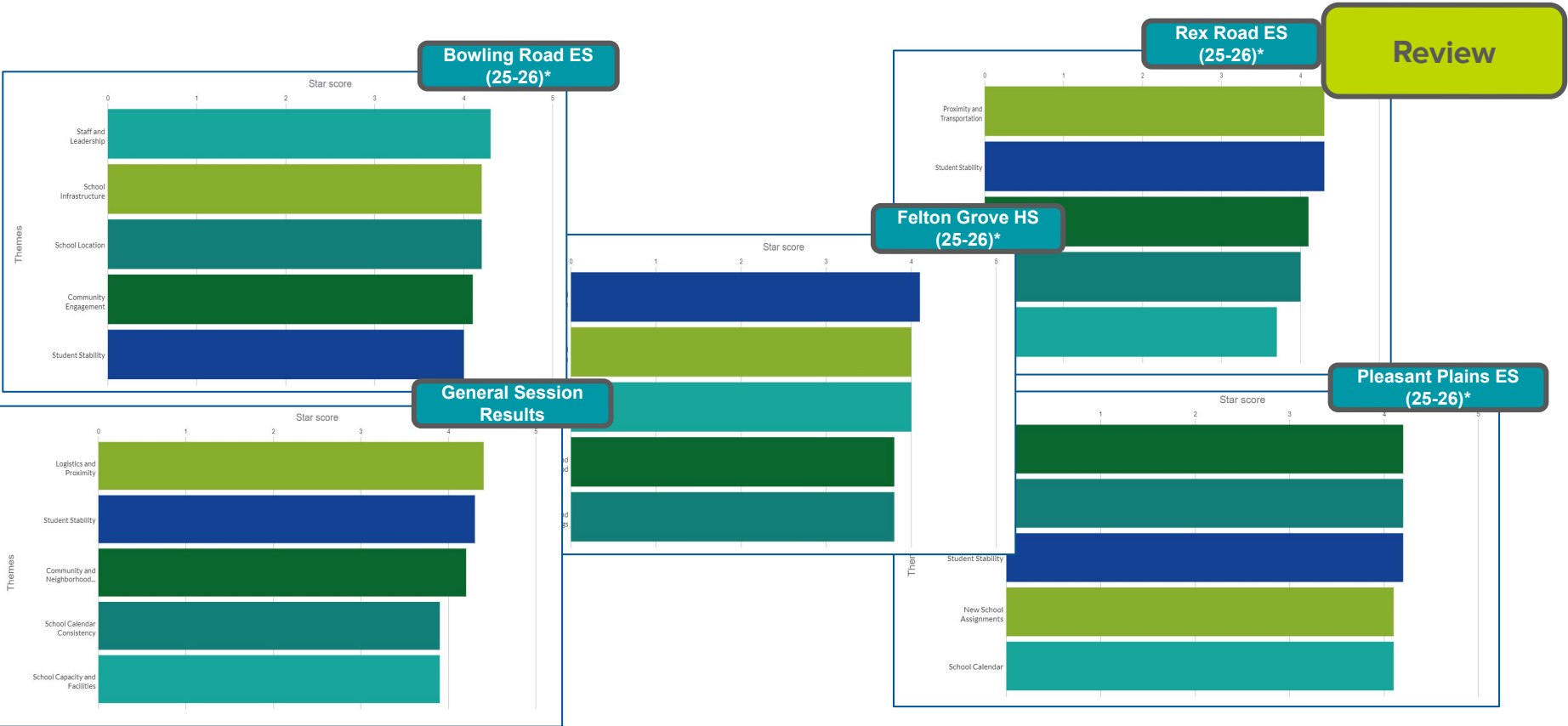
## Increased Participation from 2024-2025 Process



367% Participants



275% Thoughts



# Public Engagement Outcomes: *Impacts on Planning*

## Conduct Focus Groups/ Interviews

- Address topics that require clarity or were not addressed

## Review Stability Rules

- Consider concerns related to stability of assignment, balanced with enrollment growth patterns and operational concerns

## Review Feeder Patterns and other Assignment Change Requests

- Consider concerns related to cohort & calendar continuity

# Preparation of the Annual Enrollment Plan

1

Presentation of the Annual Enrollment Forecast (1-year and 10-year projections)

2

Review of Projected Crowding for the Next School Year

3

Review of Capital Improvement Plan (CIP) Updates (7-year plan)

4

Preparation of the Annual Enrollment Plan

5

Review and Approval of Capped Schools due to Overcrowding Concerns

6

Review of Options to Address Other School Utilization Concerns

1. Public engagement to capture thoughts and ideas to support the development of the next enrollment plan
2. Review of goals for the next enrollment plan with the Board
3. Presentation of an initial draft of the enrollment plan
4. Public engagement to help families review and understand the recommendations in the initial draft plan
5. Review of public feedback with the Board and presentation of any recommended revisions to the initial draft
6. Public hearing on the draft enrollment plan by the Board
7. Presentation of final draft of the enrollment plan for the Board's review and approval

May

## Focus Areas for the 2025-2026 Enrollment Plan

### Opening of New Schools

- Bowling Road Elementary
- Pleasant Plains Elementary
- Rex Road Elementary
- Felton Grove High

### Address Capped/ Overcrowded Schools Where Possible

### Address School Choice Options

Continue to align school choice initiatives that support Policy 4150 and the district's strategic plan to support the magnet objectives of:

- reducing high concentrations of poverty and promoting integration and diversity
- improve operational efficiency by maximizing use of school facilities and improving transportation efficiency

# Preparation of the Annual Enrollment Plan

1

Presentation of the Annual Enrollment Forecast (1-year and 10-year projections)

2

Review of Projected Crowding for the Next School Year

3

Review of Capital Improvement Plan (CIP) Updates (7-year plan)

4

Preparation of the Annual Enrollment Plan

5

Review and Approval of Capped Schools due to Overcrowding Concerns

6

Review of Options to Address Other School Utilization Concerns

1. Public engagement to capture thoughts and ideas to support the development of the next enrollment plan
2. Review of goals for the next enrollment plan with the Board
3. Presentation of an initial draft of the enrollment plan
4. Public engagement to help families review and understand the recommendations in the initial draft plan
5. Review of public feedback with the Board and presentation of any recommended revisions to the initial draft
6. Public hearing on the draft enrollment plan by the Board
7. Presentation of final draft of the enrollment plan for the Board's review and approval

Today

# Review and Approval of Capped Schools due to Overcrowding Concerns

Review

1

Presentation of the Annual Enrollment Forecast (1-year and 10-year projections)

2

Review of Projected Crowding for the Next School Year

3

Review of Capital Improvement Plan (CIP) Updates (7-year plan)

4

Preparation of the Annual Enrollment Plan

5

Review and Approval of Capped Schools due to Overcrowding Concerns

6

Review of Options to Address Other School Utilization Concerns

Capped Elementary Schools*		Capped Middle Schools*
Abbotts Creek	Oakview	Apex Friendship
Alston Ridge (MTYR)	Olive Chapel (MTYR)	Mills Park (FP)
Apex Friendship	Parkside (MTYR)	
Beaverdam	River Bend	Capped High Schools*
Cedar Fork	Rogers Lane	Apex Friendship (FP)
Holly Grove (MTYR)	Scotts Ridge	Heritage
Holly Ridge	Weatherstone	Panther Creek
Hortons Creek	White Oak	
Northwoods		

\*as of February 6, 2024  
 (MTYR) = Multi-track Year-round  
 (FP) = Feeder Pattern Cap

# Review of Options to Address Other School Utilization Concerns

Review

1 Presentation of the Annual Enrollment Forecast (1-year and 10-year projections)

2 Review of Projected Crowding for the Next School Year

3 Review of Capital Improvement Plan (CIP) Updates (7-year plan)

4 Preparation of the Annual Enrollment Plan

5 Review and Approval of Capped Schools due to Overcrowding Concerns

6 Review of Options to Address Other School Utilization Concerns

1. Review the Capped Schools list and other overcrowded areas to identify which schools are not addressed in the Capital Improvement Plan (CIP) or the Annual Enrollment Plan
2. Identify schools that are not operating on a multi-track year-round (MTYR) calendar, but have long-term crowding concerns
3. Identify schools that are operating on a year-round calendar, but do not have long-term crowding concerns
4. Host engagement events for families and school staff to gain additional feedback and insight
5. Make recommendations to the Board based on the data and feedback collected

Approved School Calendar Changes for 2025-2026 (as of August 6, 2024)	
Pine Hollow MS	Traditional Calendar
Rolesville MS	Traditional Calendar

# Initial Draft of 2025-2026 School Enrollment Plan

# 2025-2026 School Enrollment Planning Process



# Preparation of the Annual Enrollment Plan

1

Presentation of the Annual Enrollment Forecast (1-year and 10-year projections)

2

Review of Projected Crowding for the Next School Year

3

Review of Capital Improvement Plan (CIP) Updates (7-year plan)

4

Preparation of the Annual Enrollment Plan

5

Review and Approval of Capped Schools due to Overcrowding Concerns

6

Review of Options to Address Other School Utilization Concerns

1. Public engagement to capture thoughts and ideas to support the development of the next enrollment plan
2. Review of goals for the next enrollment plan with the Board
3. Presentation of an initial draft of the enrollment plan
4. Public engagement to help families review and understand the recommendations in the initial draft plan
5. Review of public feedback with the Board and presentation of any recommended revisions to the initial draft
6. Public hearing on the draft enrollment plan by the Board
7. Presentation of final draft of the enrollment plan for the Board's review and approval

Today

## Information & Updates

[www.wcpss.net/2025enrollmentproposal](http://www.wcpss.net/2025enrollmentproposal)

[www.wcpss.net/assignmentplanning](http://www.wcpss.net/assignmentplanning)

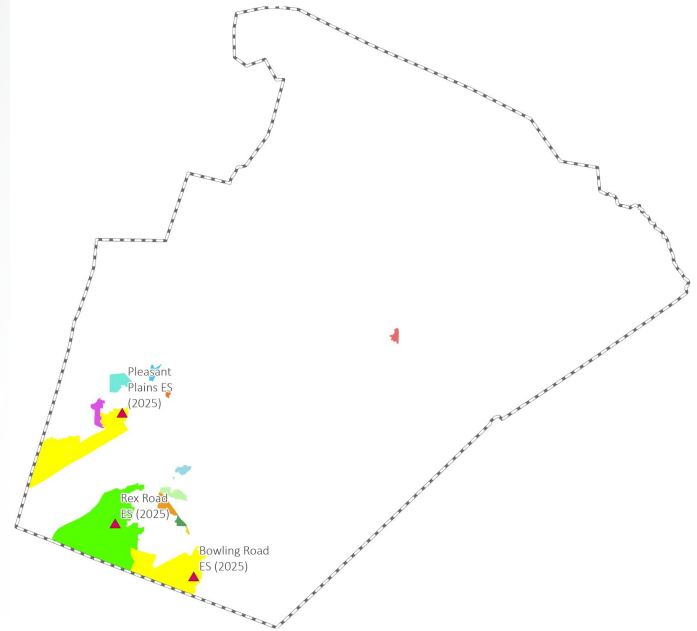
## Base School Impacts: *Elementary School*

### **Sending Schools:**

Apex  
Apex Friendship  
Baucom  
Buckhorn Creek  
Fuquay Varina  
Herbert Akins  
Holly Grove  
Holly Ridge  
Holly Springs  
Lincoln Heights Magnet  
Oak Grove  
Olive Chapel  
Salem  
Scotts Ridge  
South Lakes

### **Receiving Schools:**

Baucom - RENOVATED  
Bowling Road - NEW  
Buckhorn Creek  
Herbert Akins  
Holly Grove  
Holly Ridge  
Laurel Park  
Lincoln Heights Magnet  
Penny Road  
Pleasant Plains - NEW  
Powell Magnet  
Rex Road - NEW  
Scotts Ridge



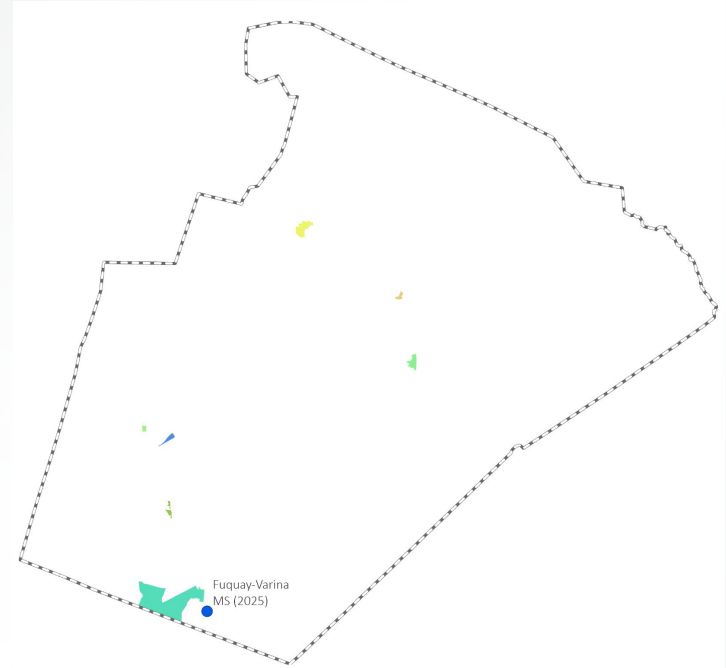
## Base School Impacts: *Middle School*

### **Sending Schools:**

Apex  
Apex Friendship  
Carroll Magnet  
Centennial Magnet  
Dillard Drive Magnet  
Holly Grove  
Lufkin Road

### **Receiving Schools:**

Apex  
Fuquay-Varina - NEW LOCATION  
Holly Ridge  
Leesville Road  
Ligon Magnet  
Lufkin Road  
West Millbrook Magnet



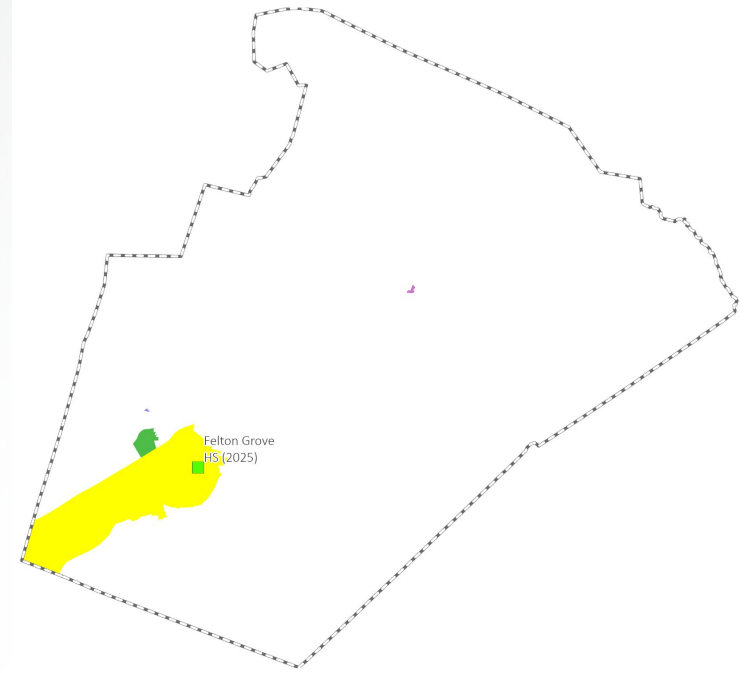
## Base School Impacts: *High School*

### **Sending Schools:**

Apex  
Apex Friendship  
Holly Springs  
Southeast Raleigh Magnet

### **Receiving Schools:**

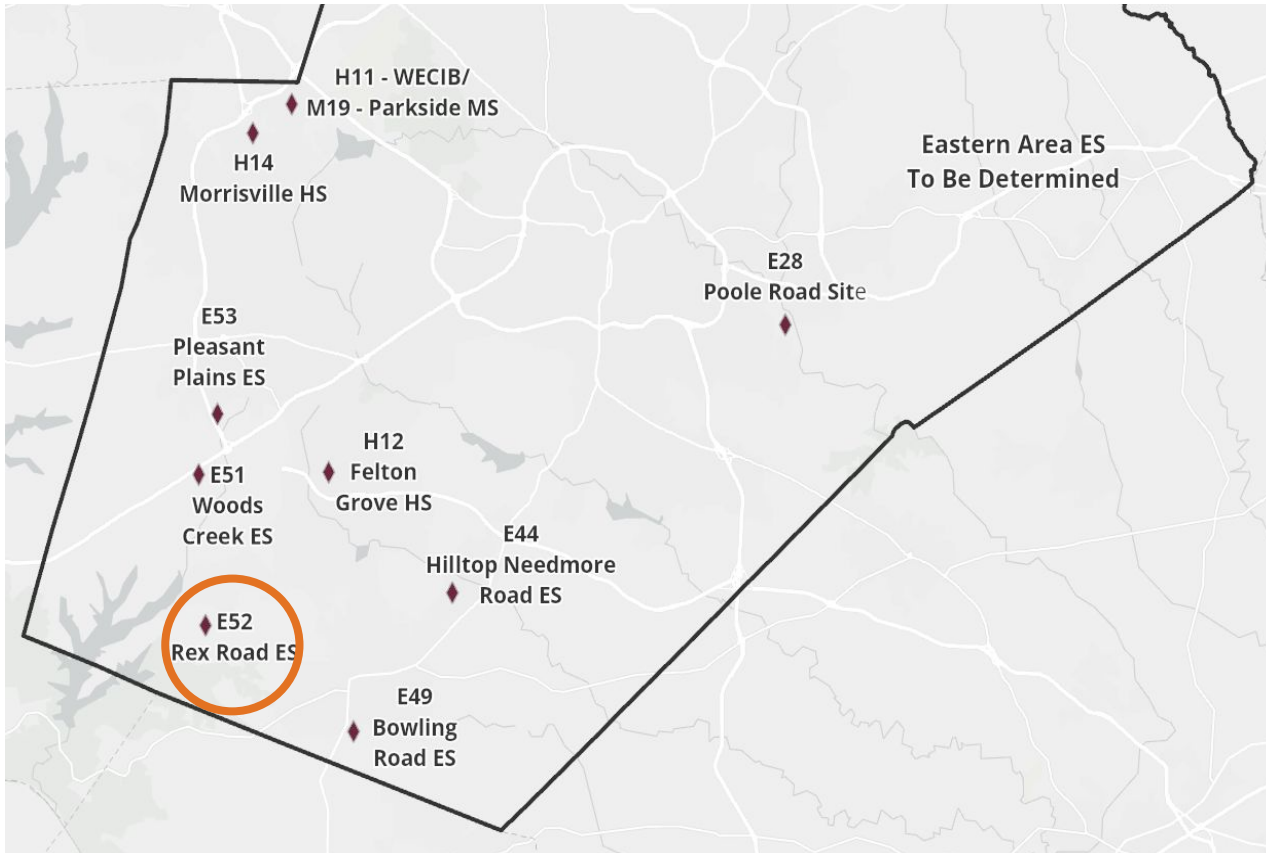
Apex  
Felton Grove - NEW  
Millbrook Magnet



# Recommendations Related to the Opening of New Schools

# Rex Road Elementary





# New School - Rex Road ES (opening July 2025)

## Calendar Recommendation

- Multi-track Year-round, Capacity = 924

## Impacted Schools

- Buckhorn Creek ES & Holly Grove ES

2024-25 Base School	Calendar	Capacity w/ Trailers	2025-26 Projected Utilization w/ Trailers	2026-27 Projected Utilization w/ Trailers
Buckhorn Creek ES	Traditional	696	126%	128%
Holly Grove ES	Multi-track Year-round	874	102%	100%

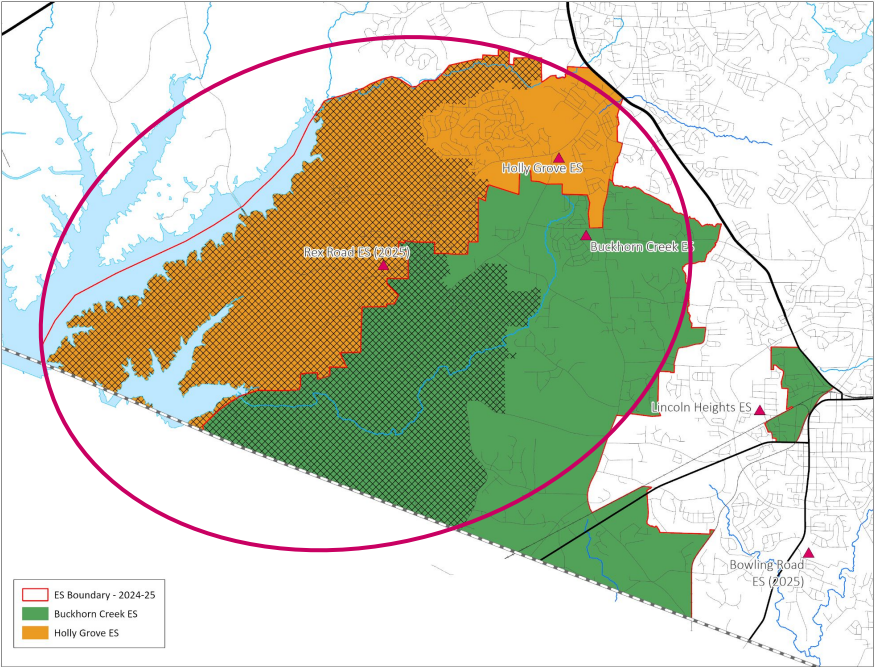
# New School - Rex Road ES (opening July 2025)

## Other Impacted Schools in the Area

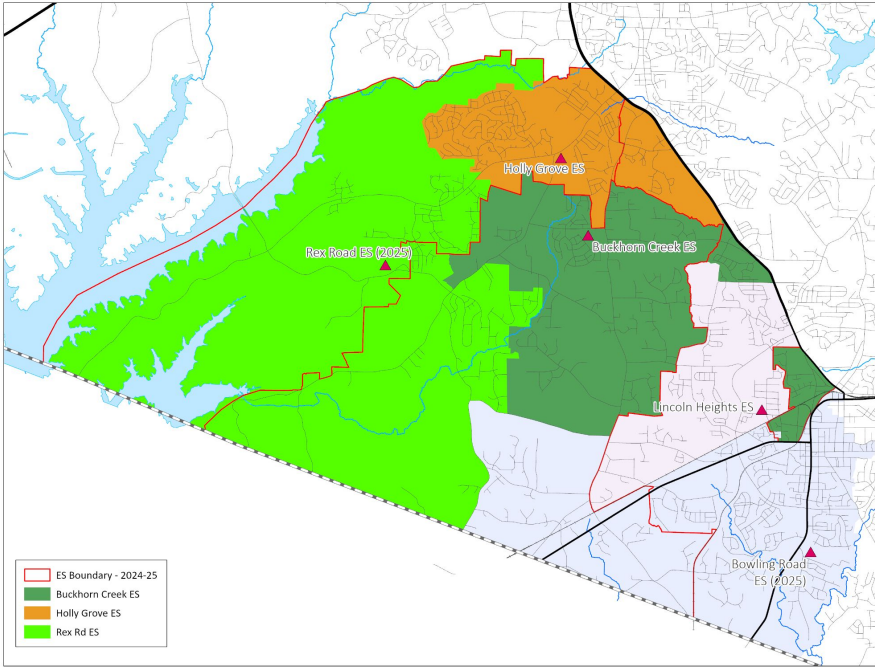
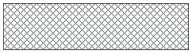
- Herbert Akins Road ES, Holly Ridge ES, Holly Springs ES & Lincoln Heights Magnet ES

2024-25 Base School	Calendar	Capacity w/ Trailers	2025-26 Projected Utilization w/ Trailers	2026-27 Projected Utilization w/ Trailers
Herbert Akins Road ES	Multi-track Year-round	916	106%	106%
Holly Ridge ES	Traditional	648	112%	110%
Holly Springs ES	Multi-track Year-round	896	84%	83%
Lincoln Heights Magnet ES	Traditional	508	125%	126%

# New School - Rex Road ES

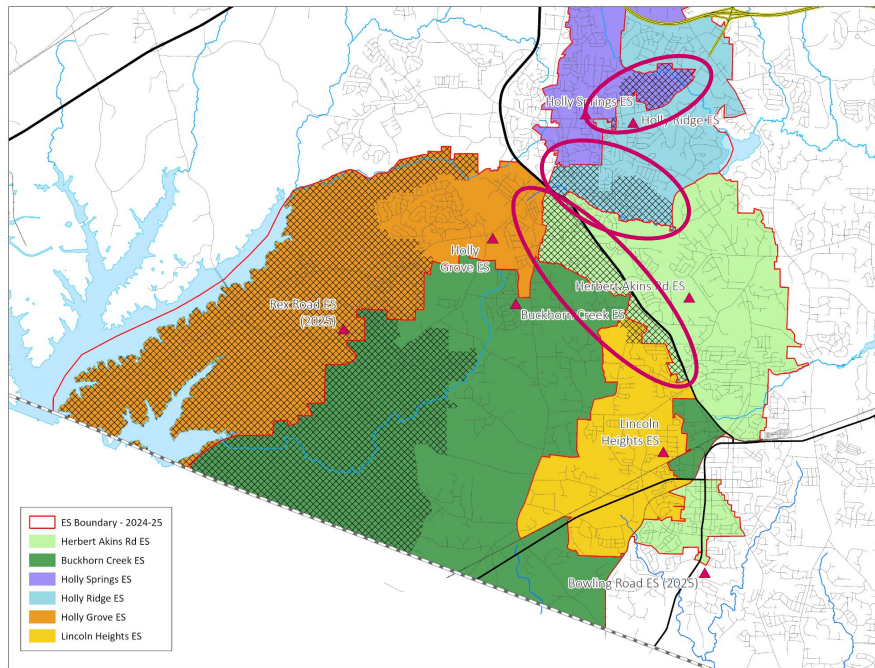


Impacted Areas:

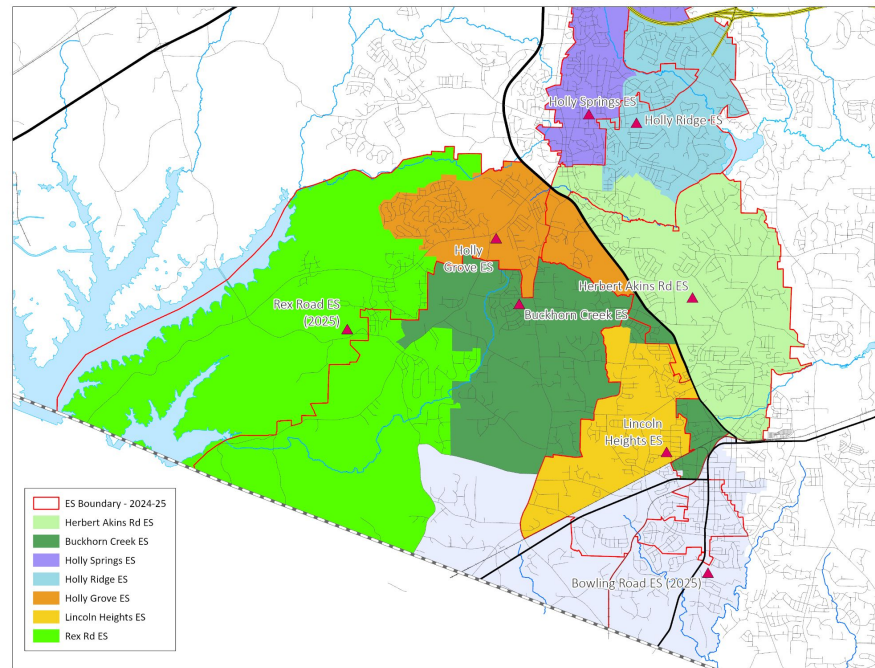


Proposed Base Areas

# Existing Schools - Buckhorn Creek ES, Herbert Akins Road ES, Holly Grove ES, Holly Ridge ES & Lincoln Heights Magnet ES (from Herbert Akins ES, Holly Ridge ES, Holly Springs ES & Lincoln Heights Magnet ES)



Impacted Areas:



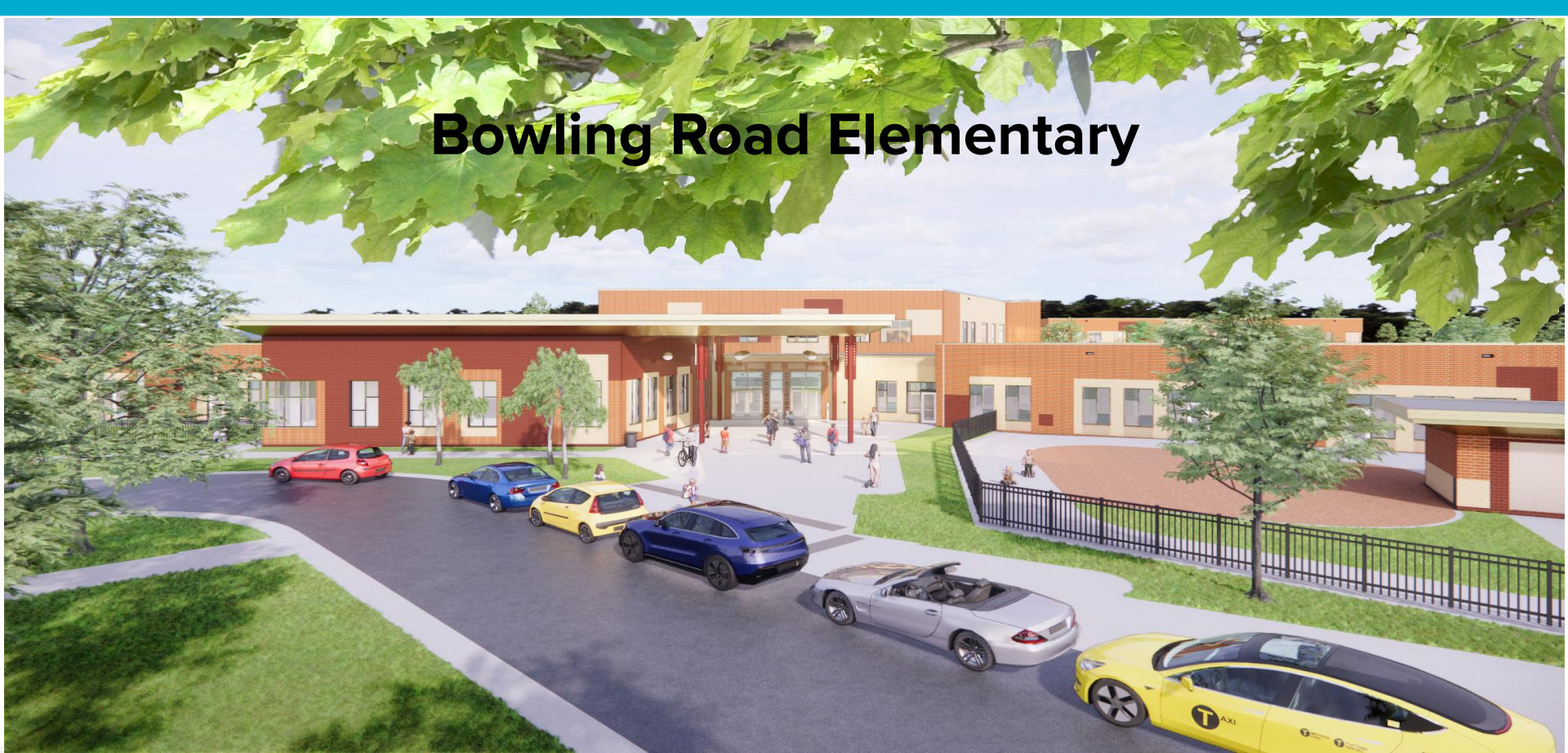
Proposed Base Areas

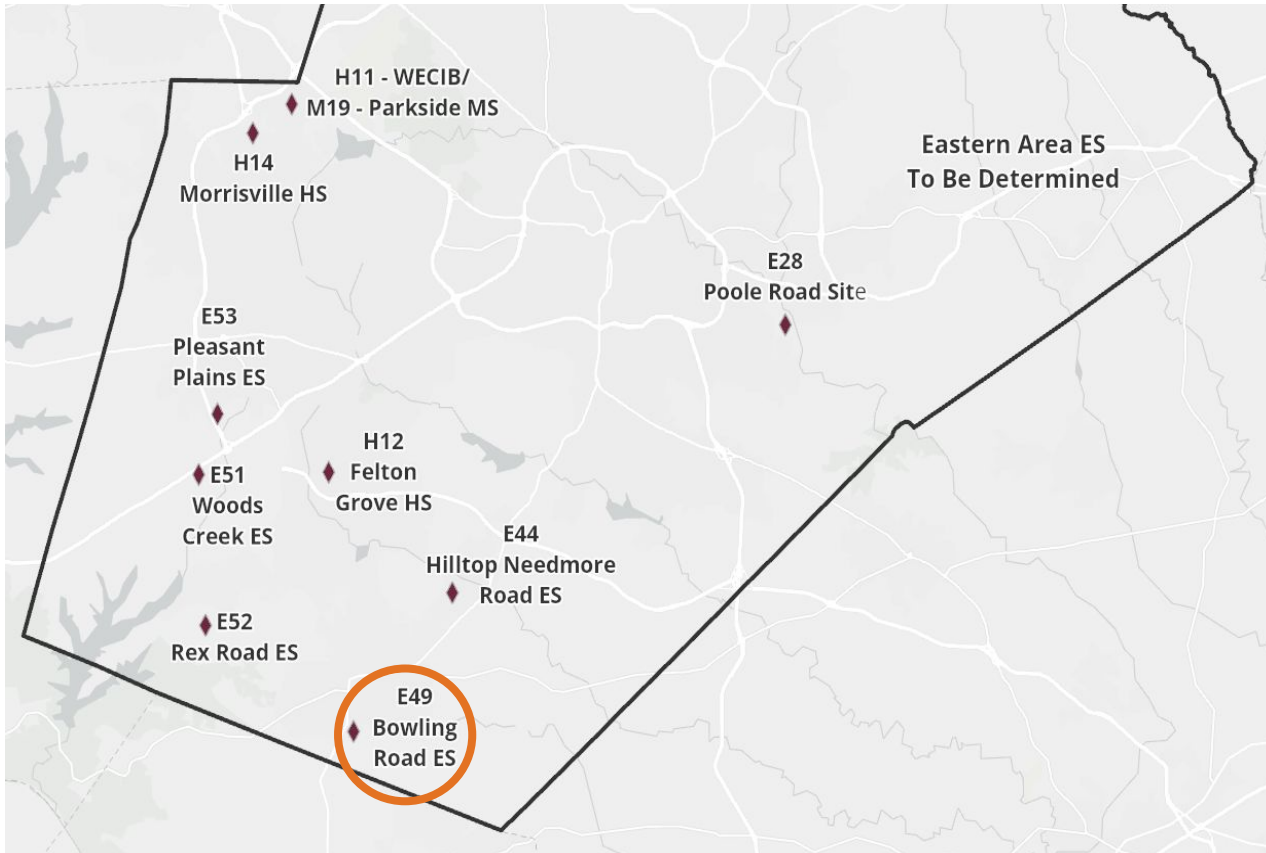
# New School - Rex Road ES & Existing Schools

Buckhorn Creek ES, Herbert Akins Road ES, Holly Grove ES & Holly Ridge ES (from Herbert Akins Road ES, Holly Ridge ES, Holly Springs ES & Lincoln Heights Magnet ES)

2025-26 Base School	Calendar	Capacity w/ Trailers	2025-26 Projected Utilization w/ Trailers	2026-27 Projected Utilization w/ Trailers
Buckhorn Creek ES	Traditional	696	89%*	90%*
Herbert Akins Road ES	Multi-track Year-round	916	94%*	95%*
Holly Grove ES	Multi-track Year-round	874	83%	81%
Holly Ridge ES	Traditional	648	100%	97%
Holly Springs ES	Multi-track Year-round	896	78%	77%
Lincoln Heights Magnet ES	Traditional	508	88%*	90%*
<b>Rex Road ES</b>	<b>Multi-track Year-round</b>	<b>924</b>	<b>51%</b>	<b>52%</b>

# Bowling Road Elementary





# New School - Bowling Road ES (opening July 2025)

## Calendar Recommendation

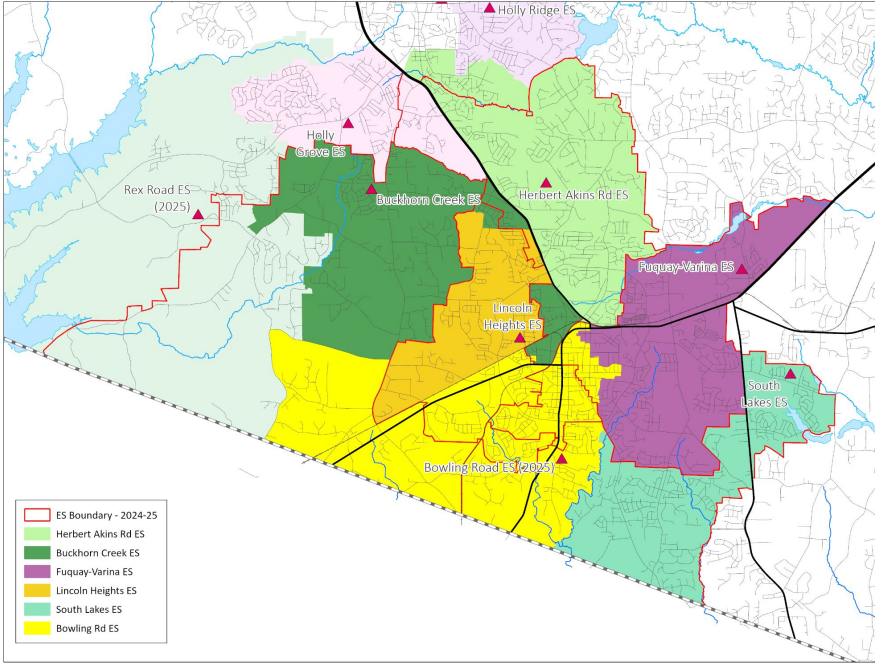
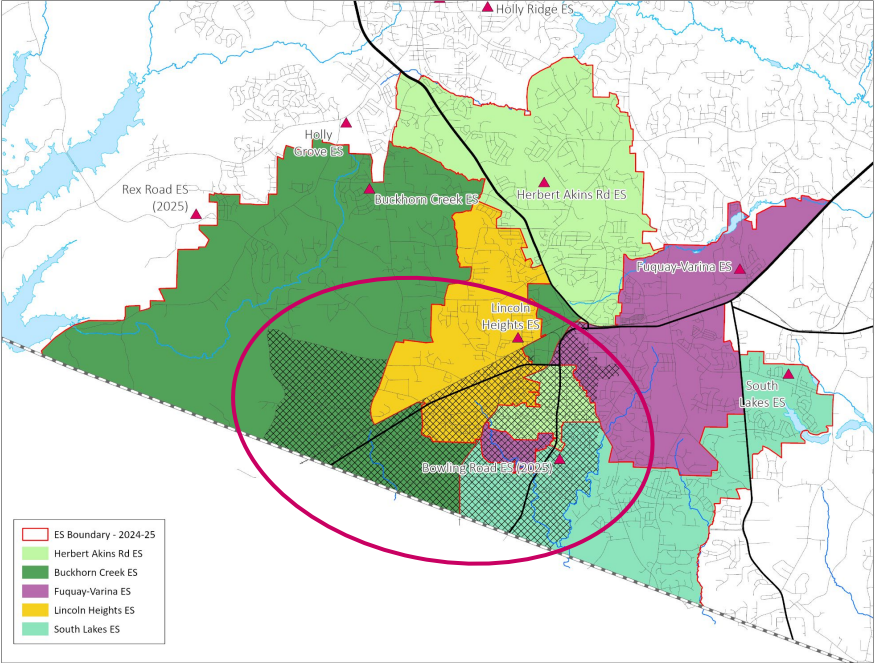
- Multi-track Year-round, Capacity = 924

## Impacted Schools

- Buckhorn Creek ES, Fuquay-Varina ES, Herbert Akins Road ES, Lincoln Heights Magnet ES & South Lakes ES

2024-25 Base School	Calendar	Capacity w/ Trailers	2025-26 Projected Utilization w/ Trailers	2026-27 Projected Utilization w/ Trailers
Buckhorn Creek ES	Traditional	696	126%	128%
Fuquay-Varina ES	Traditional	716	98%	98%
Herbert Akins Road ES	Multi-track Year-round	916	106%	106%
Lincoln Heights Magnet ES	Traditional	508	125%	126%
South Lakes ES	Traditional	716	103%	100%

# New School - Bowling Road ES & Existing Schools



Impacted Areas:



Proposed Base Areas

# New School - Bowling Road ES & Existing Schools

Buckhorn Creek ES, Herbert Akins Road ES, & Lincoln Heights Magnet ES (from Herbert Akins ES, Holly Ridge ES & Lincoln Heights Magnet ES)

2025-26 Base School	Calendar	Capacity w/ Trailers	2025-26 Projected Utilization w/ Trailers	2026-27 Projected Utilization w/ Trailers
Buckhorn Creek ES	Traditional	696	89%*	90%*
Fuquay-Varina ES	Traditional	716	84%	85%
Herbert Akins Road ES	Multi-track Year-round	916	94%*	95%*
Lincoln Heights Magnet ES	Traditional	508	88%*	90%*
South Lakes ES	Traditional	716	82%	79%
<b>Bowling Road ES</b>	<b>Multi-track Year-round</b>	<b>924</b>	<b>70%</b>	<b>71%</b>

# Fuquay-Varina Middle (NEW Location)



# **NEW Location/ Existing School - Fuquay-Varina MS**

## **Operating Calendar**

- Traditional

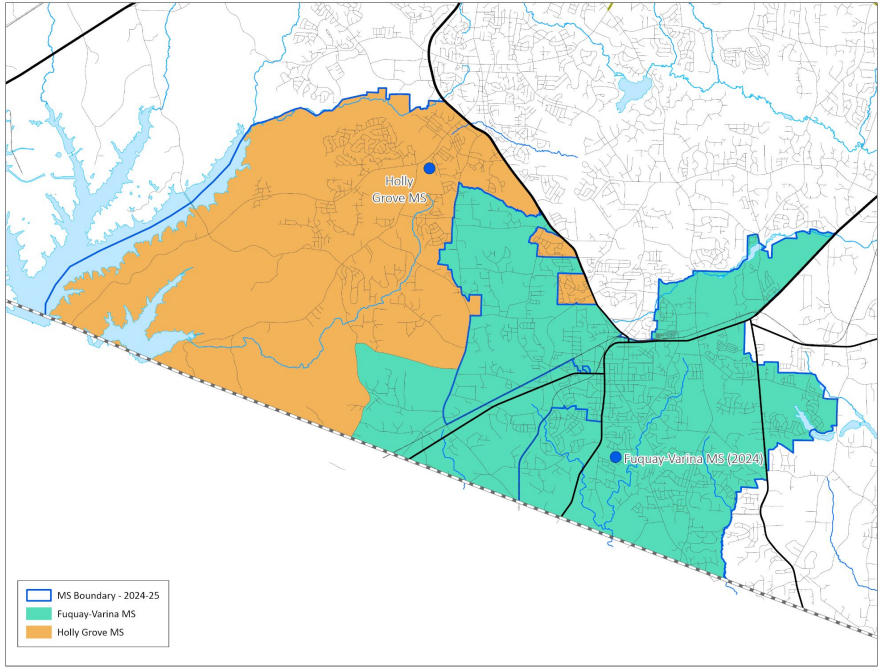
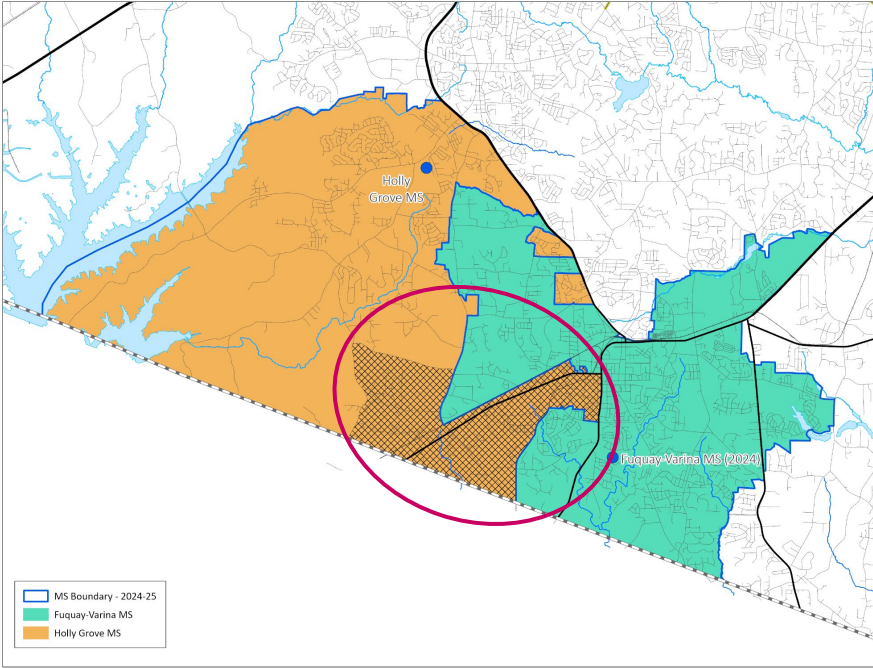
## **NEW Capacity**

- 1404 (increase from 936 at original location)

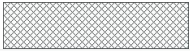
## **Campus Information**

- Bowling Road ES and Fuquay-Varina MS will be located on the same campus

# NEW Location/ Existing School - Fuquay-Varina MS (from Holly Grove MS)



Impacted Areas:



Proposed Base Areas

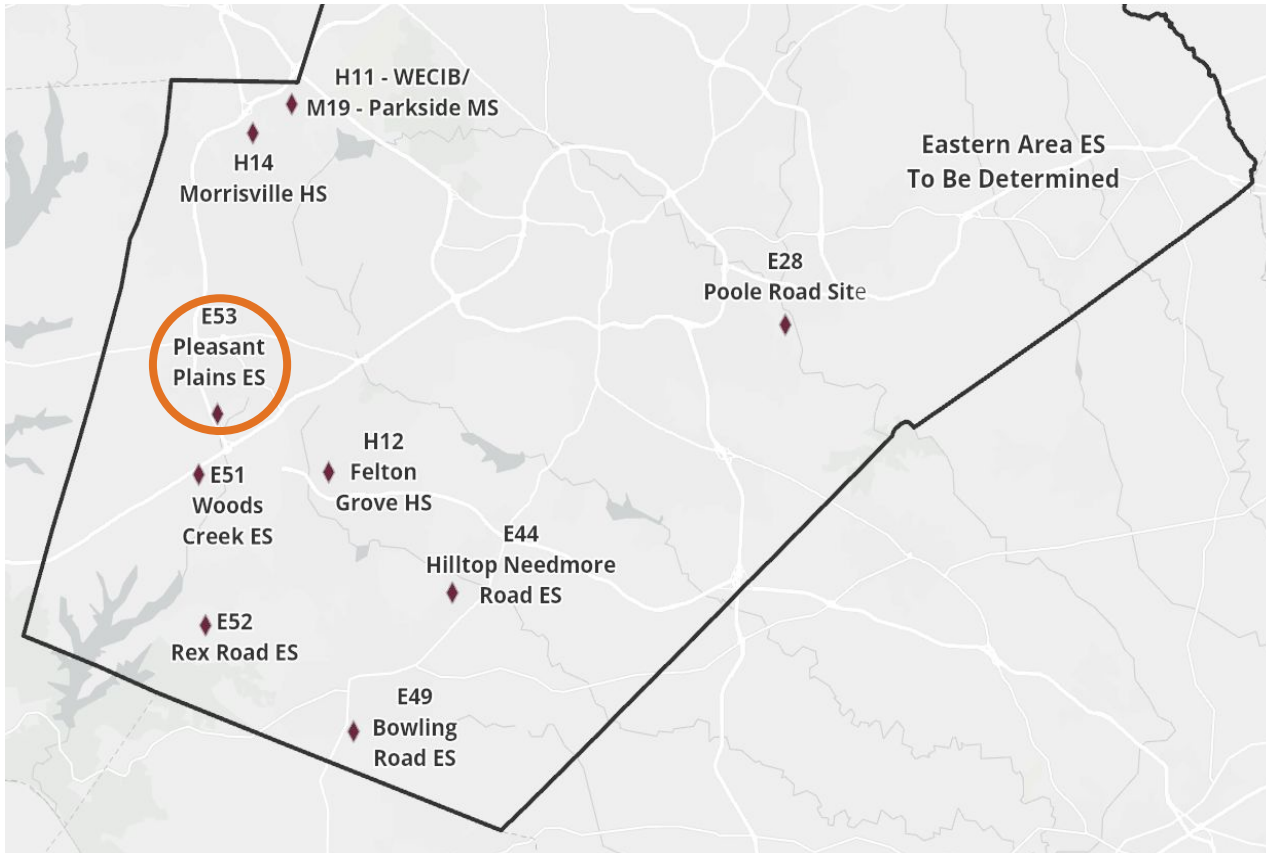
## NEW Location/ Existing School - Fuquay-Varina MS (from Holly Grove MS)

2024-25 Base School	Calendar	Capacity w/ Trailers	2025-26 Projected Utilization w/ Trailers	2026-27 Projected Utilization w/ Trailers
Holly Grove MS	Multi-track Year-round	1560	63%	63%
Fuquay-Varina MS	Traditional	1404	71%	72%

2025-26 Base School	Calendar	Capacity w/ Trailers	2025-26 Projected Utilization w/ Trailers	2026-27 Projected Utilization w/ Trailers
Holly Grove MS	Multi-track Year-round	1560	55%	55%
Fuquay-Varina MS	Traditional	1404	80%	81%

# Pleasant Plains Elementary





# New School - Pleasant Plains ES (opening July 2025)

## Calendar Recommendation

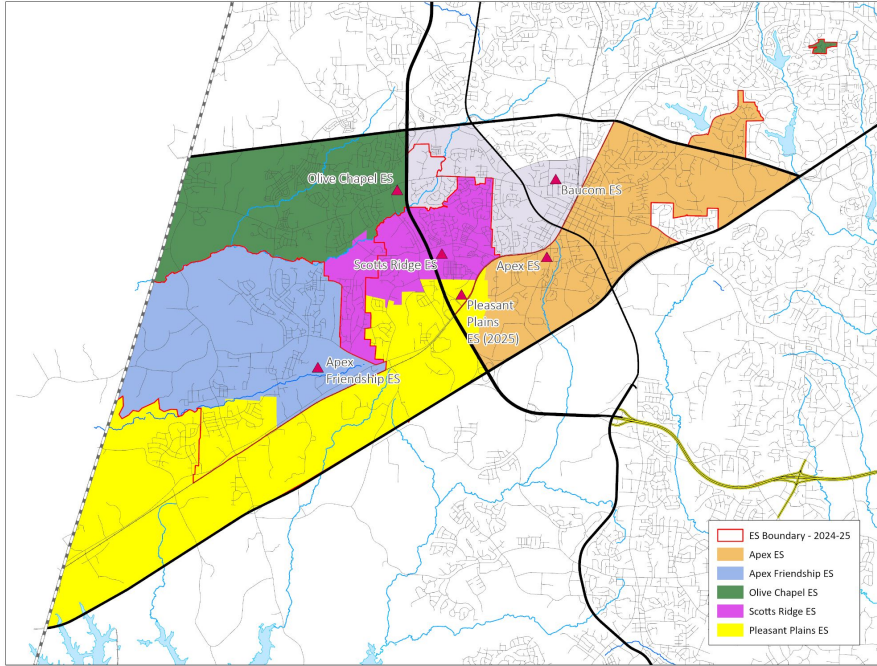
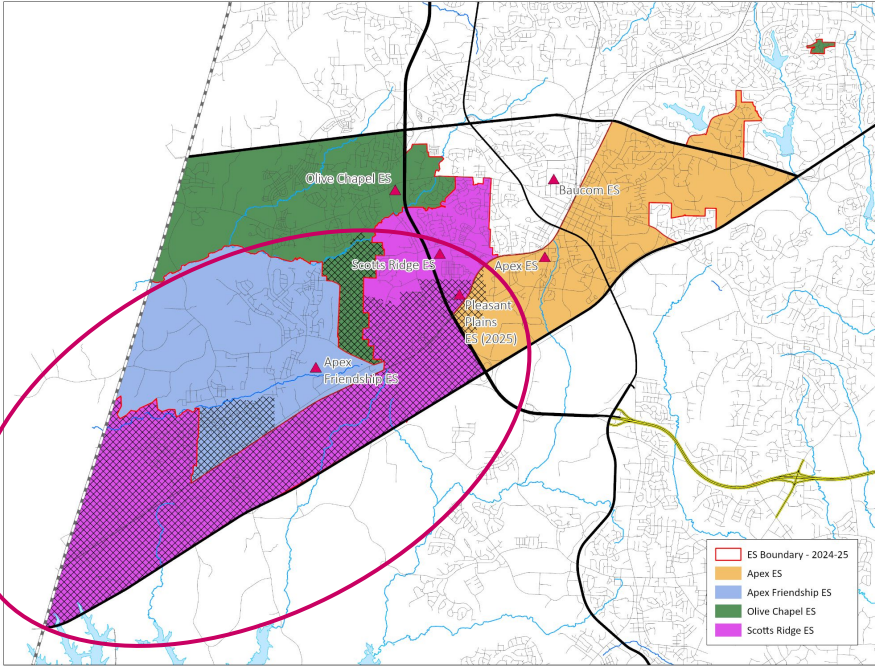
- Multi-track Year-round, Capacity = 924

## Impacted Schools

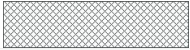
- Apex ES, Apex Friendship ES & Scotts Ridge ES (& Olive Chapel ES)

2024-25 Base School	Calendar	Capacity w/ Trailers	2025-26 Projected Utilization w/ Trailers	2026-27 Projected Utilization w/ Trailers
Apex ES	Traditional	588	96%	99%
Apex Friendship ES	Traditional	716	138%	147%
(Olive Chapel ES)	Multi-track Year-round	856	144%	147%
Scotts Ridge ES	Traditional	736	116%	118%

# New School - Pleasant Plains ES & Existing Schools



Impacted Areas:



Proposed Base Areas

# New School - Pleasant Plains ES & Existing Schools

## Scotts Ridge ES (from Olive Chapel ES)

2025-26 Base School	Calendar	Capacity w/ Trailers	2025-26 Projected Utilization w/ Trailers	2026-27 Projected Utilization w/ Trailers
Apex ES	Traditional	588	96%	99%
Apex Friendship ES	Traditional	716	113%	121%
Olive Chapel ES	Multi-track Year-round	856	119%*	121%*
Scotts Ridge ES	Traditional	736	76%	76%
<b>Pleasant Plains ES</b>	<b>Multi-track Year-round</b>	<b>924</b>	<b>67%</b>	<b>71%</b>

# Baucom Elementary (Renovation)



# Renovated School - Baucom ES

## Operating Calendar

- Traditional

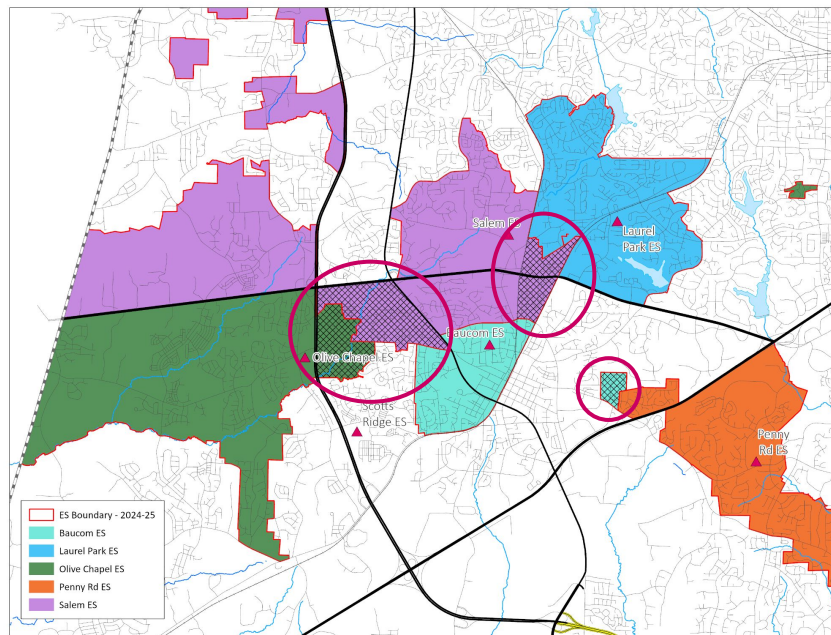
## NEW Capacity

- 716 (increase from 508 prior to renovation)

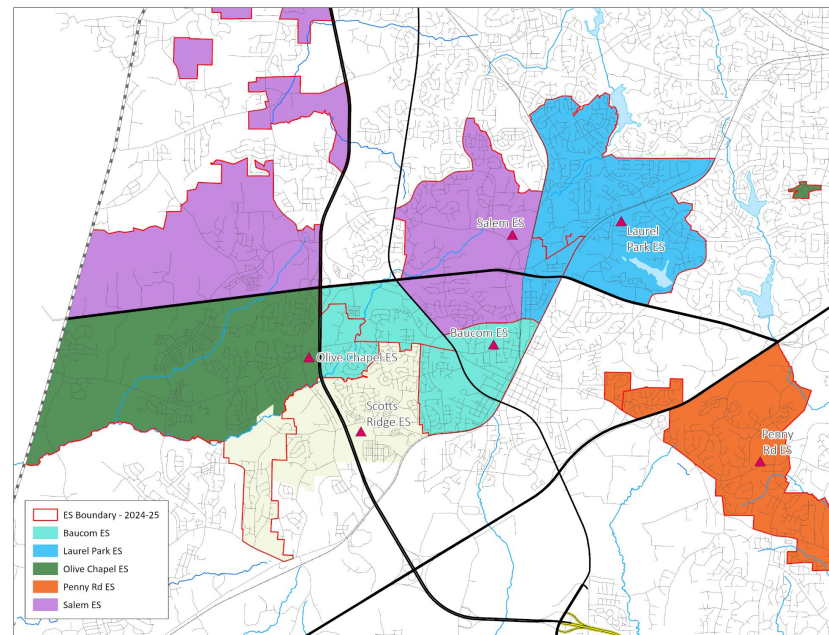
## Recommendations to Expand Base Attendance Area

- Provide relief to nearby schools that are capped or projected to be overcrowded

# Renovated School - Baucom ES (from Olive Chapel ES & Salem ES) & Existing School - Laurel Park ES & Penny Rd ES (from Baucom ES & Salem ES)



Impacted Areas:



Proposed Base Areas

# Renovated School - Baucom ES (from Olive Chapel ES & Salem ES) & Existing School - Laurel Park ES (from Salem ES)

2024-25 Base School	Calendar	Capacity w/ Trailers	2025-26 Projected Utilization w/ Trailers	2026-27 Projected Utilization w/ Trailers
Baucom ES	Traditional	716	91%	91%
Laurel Park ES	Multi-track Year-round	854	79%	77%
Olive Chapel ES	Multi-track Year-round	856	144%	147%
Penny Road ES	Traditional	570	85%	84%
Salem ES	Multi-track Year-round	856	99%	108%

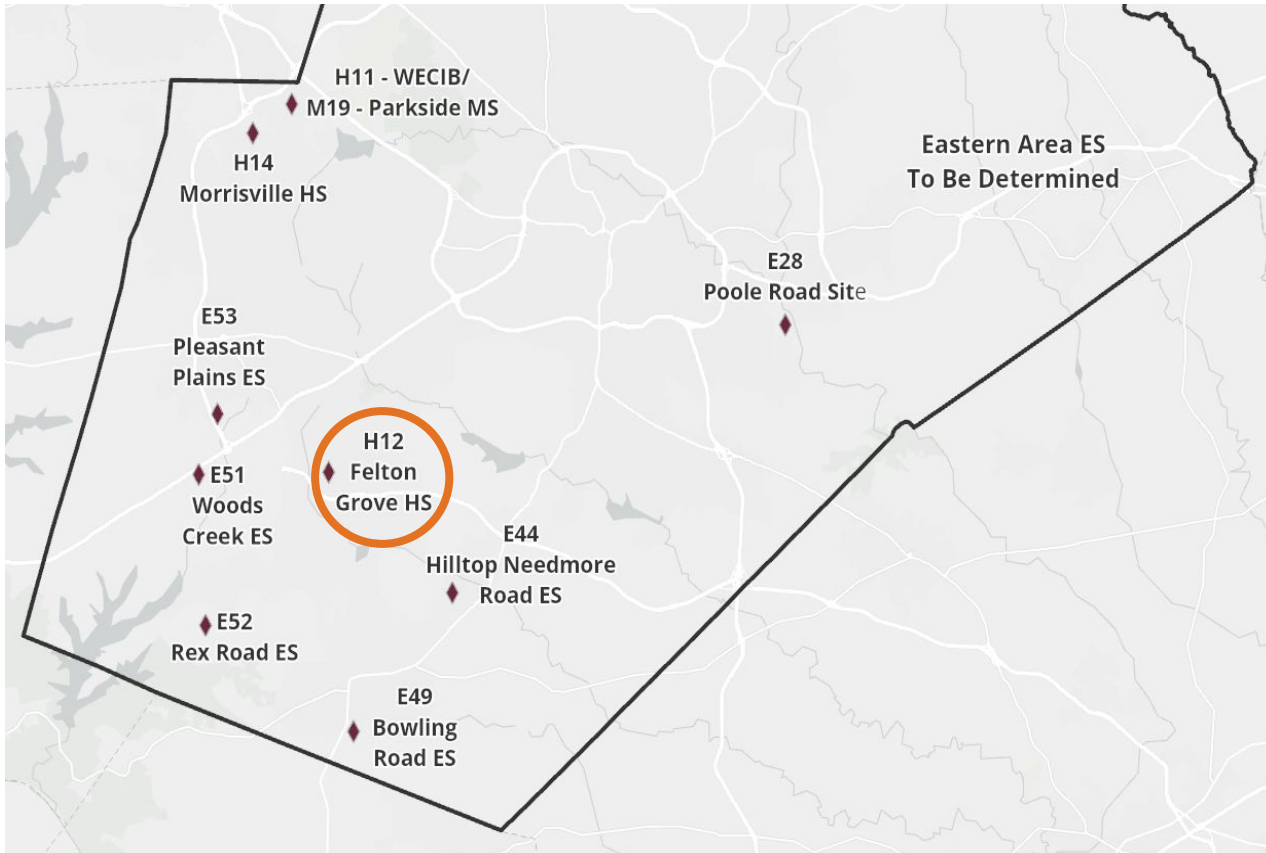
2025-26 Base School	Calendar	Capacity w/ Trailers	2025-26 Projected Utilization w/ Trailers	2026-27 Projected Utilization w/ Trailers
Baucom ES	Traditional	716	112%	112%
Laurel Park ES	Multi-track Year-round	854	89%	87%
Olive Chapel ES	Multi-track Year-round	856	119%*	121%*
Penny Road ES	Traditional	570	90%	89%
Salem ES	Multi-track Year-round	856	77%	85%

\*This school's projected crowding reflects the cumulative impact of multiple assignment adjustments.

*\*Utilization based on building capacity, updated May 2024*

*\*\*"After" Projected Utilization assumes all impacted students will transition to the newly assigned school*

# Felton Grove High



# New School - Felton Grove HS (opening August 2025)

## Calendar Recommendation

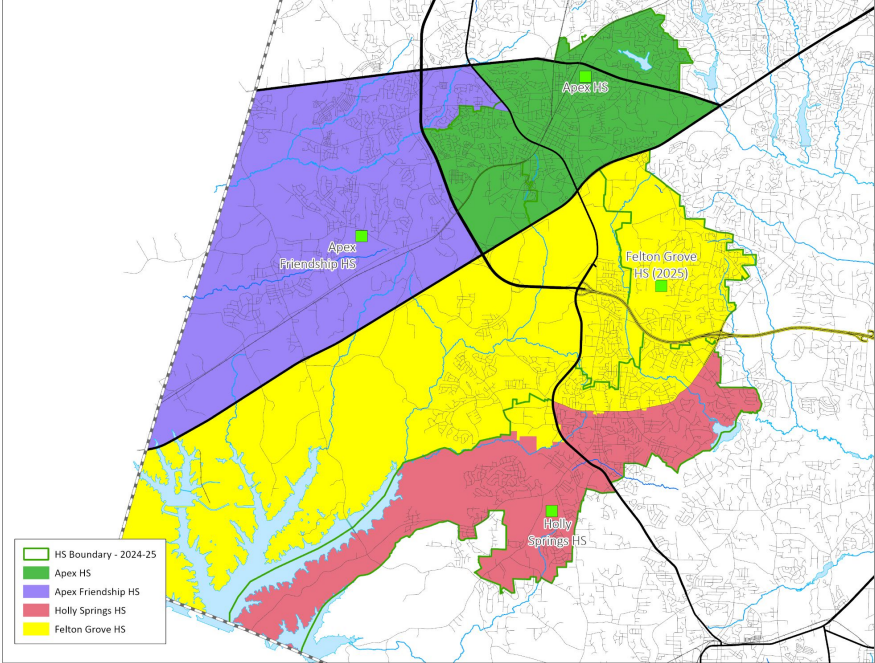
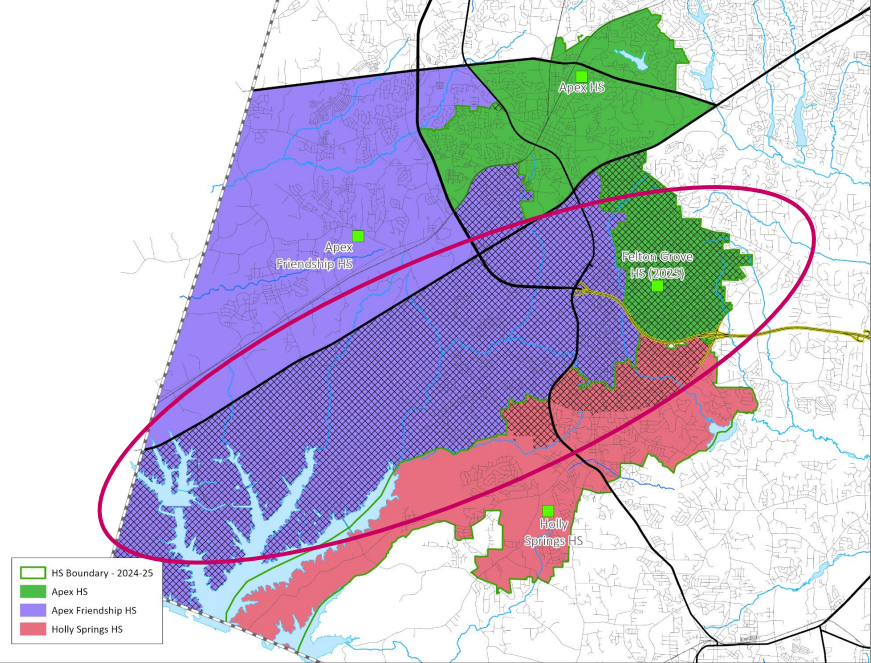
- Traditional, Capacity = 2200

## Impacted Schools

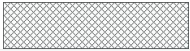
- Apex HS, Apex Friendship HS & Holly Springs HS

2024-25 Base School	Calendar	Capacity w/ Trailers	2025-26 Projected Utilization w/ Trailers	2026-27 Projected Utilization w/ Trailers
Apex HS	Traditional	2240	108%	102%
Apex Friendship HS	Traditional	2384	119%	126%
Holly Springs HS	Traditional	1992	102%	105%

# New School - Felton Grove HS

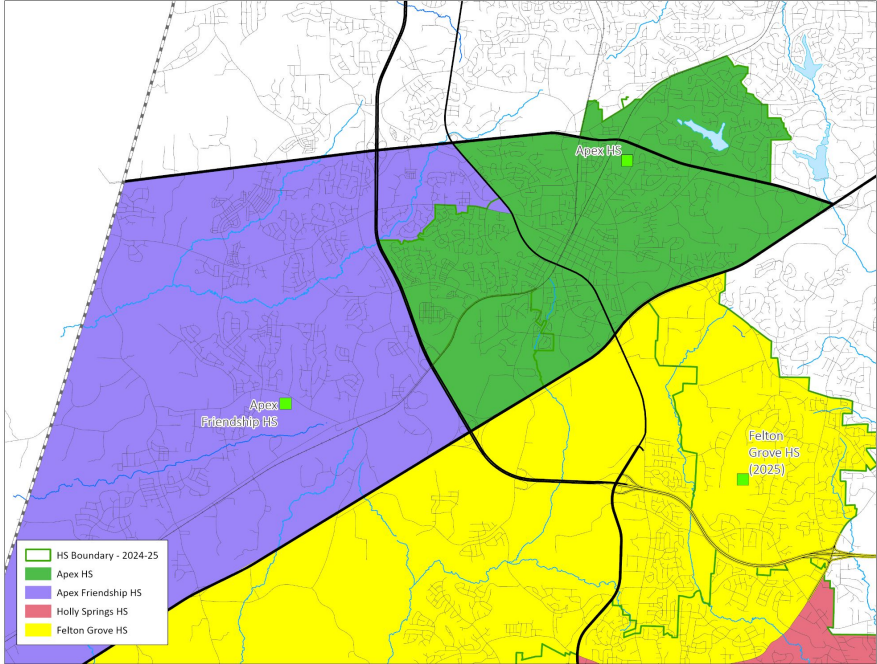
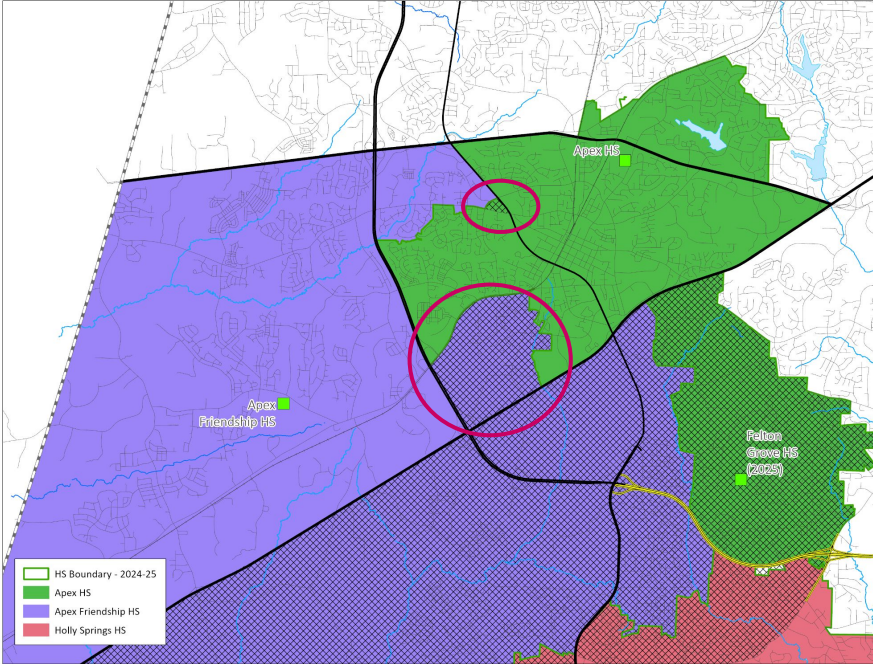


Impacted Areas:

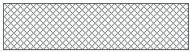


Proposed Base Areas

# Existing School - Apex HS (from Apex Friendship HS)



Impacted Areas:



Proposed Base Areas

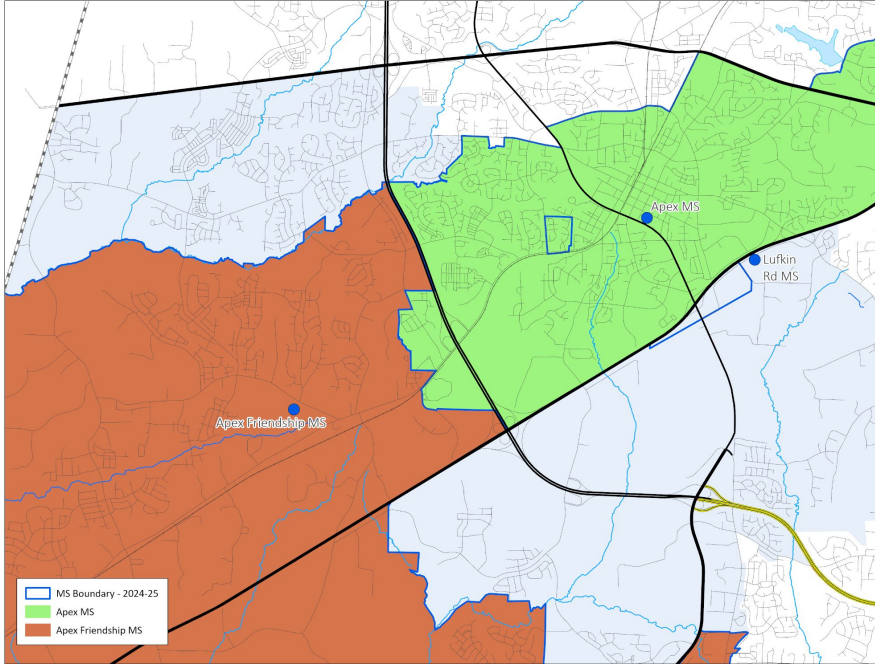
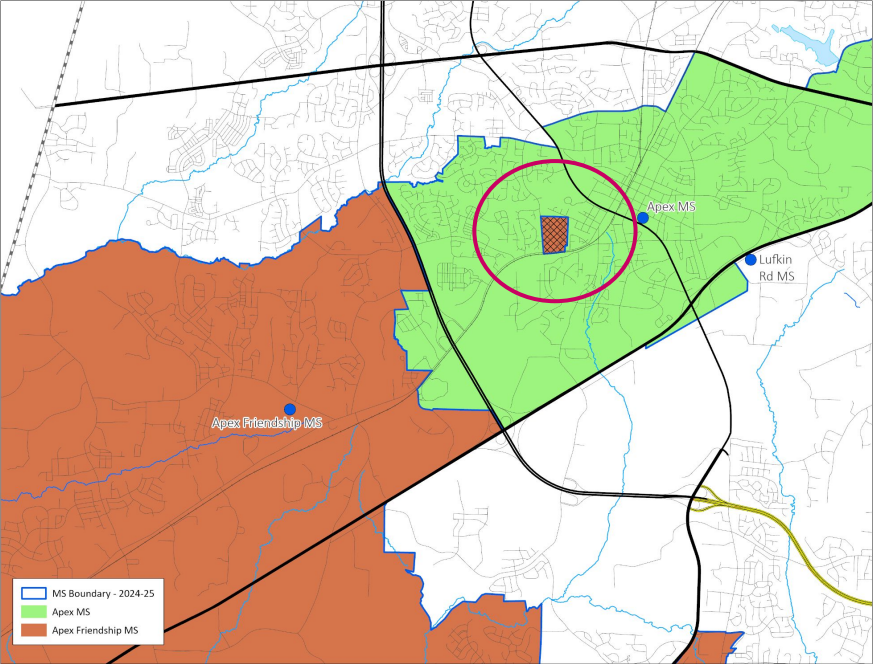
# New School - Felton Grove HS & Existing School

## Apex HS (from Apex Friendship HS)

2025-26 Base School	Calendar	Capacity w/ Trailers <sup>2</sup>	2025-26 Projected Utilization w/ Trailer <sup>1</sup>	2026-27 Projected Utilization w/ Trailers <sup>1</sup>
Apex HS	Traditional	2240	110%	97%*
Apex Friendship HS	Traditional	2384	91%	88%
Holly Springs HS	Traditional	1992	91%	88%
<b>Felton Grove HS</b>	<b>Traditional</b>	<b>2240</b>	<b>41%</b>	<b>63%</b>

<sup>1</sup>The projected capacity for Felton Grove HS reflects full 9th-12th grade enrollment, which will NOT be reached in the first year when only 9th and 10th grades are enrolled. The table shows the expected utilization based on the enrollment of 9th and 10th grade students ONLY at Felton Grove HS for the 2025-26 school year, with the student cohort advancing each year (9th-11th in 2026-27).

# Existing School - Apex MS (from Apex Friendship MS)



Impacted Areas:



Proposed Base Areas

# Existing School - Apex MS (from Apex Friendship MS)

2024-25 Base School	Calendar	Capacity w/ Trailers	2025-26 Projected Utilization w/ Trailers	2026-27 Projected Utilization w/ Trailers
Apex MS	Traditional	936	92%	94%
Apex Friendship MS	Traditional	1248	113%	110%

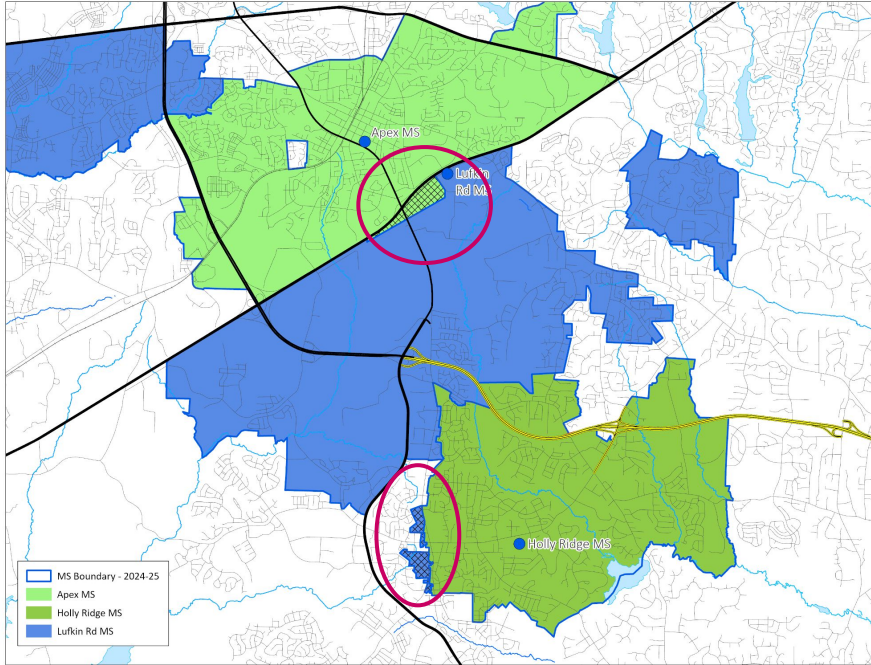
2025-26 Base School	Calendar	Capacity w/ Trailers	2025-26 Projected Utilization w/ Trailers	2026-27 Projected Utilization w/ Trailers
Apex MS	Traditional	936	94%*	95%*
Apex Friendship MS	Traditional	1248	112%	109%

*\*Utilization based on building capacity, updated May 2024*

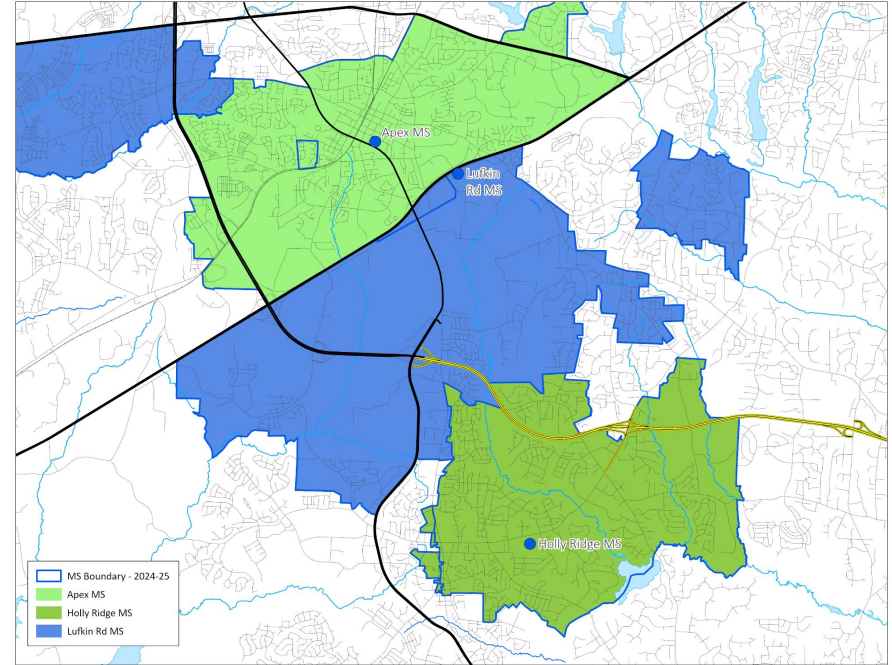
*\*\*"After" Projected Utilization assumes all impacted students will transition to the newly assigned school*

\*This school's projected crowding reflects the cumulative impact of multiple assignment adjustments.

# Existing School - Lufkin Road MS (from Apex MS) & Holly Ridge MS (from Lufkin Road MS)



Impacted Areas:



Proposed Base Areas

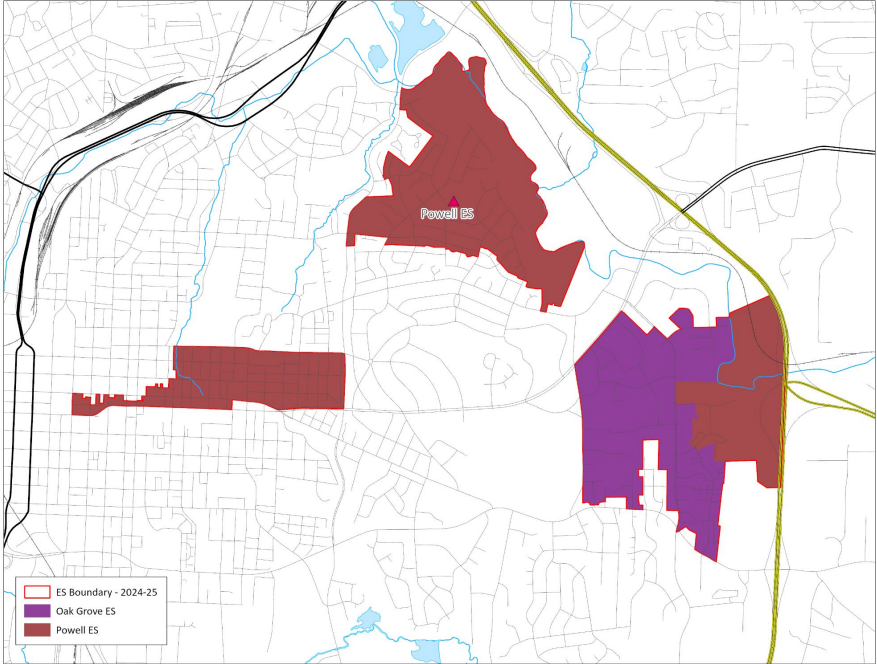
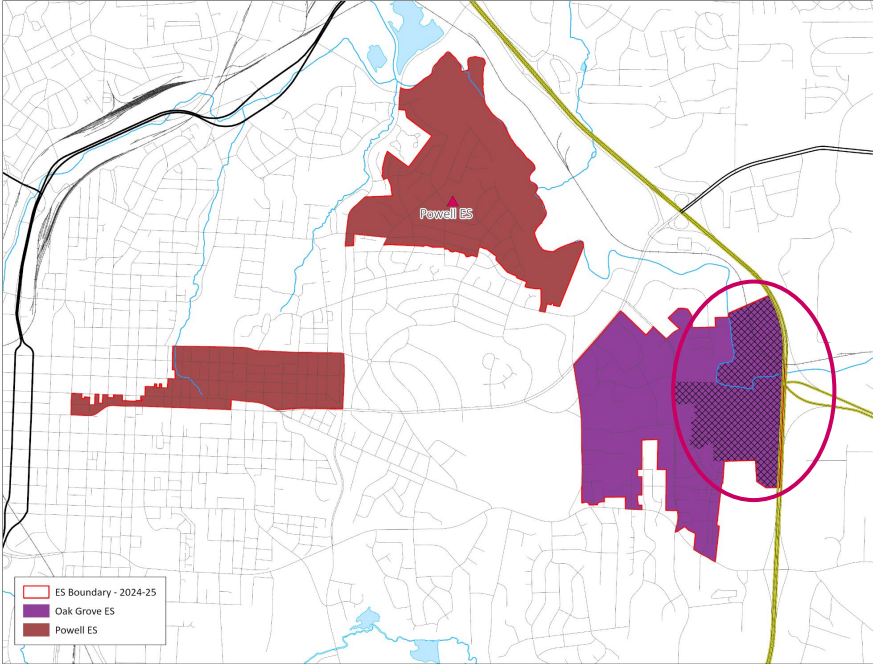
# Existing School - Lufkin Road MS (from Apex MS) & Holly Ridge MS (from Lufkin Road MS)

2024-25 Base School	Calendar	Capacity w/ Trailers	2025-26 Projected Utilization w/ Trailers	2026-27 Projected Utilization w/ Trailers
Apex MS	Traditional	936	92%	94%
Holly Ridge MS	Traditional	1222	79%	80%
Lufkin Road MS	Multi-track Year-round	1248	94%	100%

2025-26 Base School	Calendar	Capacity w/ Trailers	2025-26 Projected Utilization w/ Trailers	2026-27 Projected Utilization w/ Trailers
Apex MS	Traditional	936	94%*	95%*
Holly Ridge MS	Traditional	1222	79%	80%
Lufkin Road MS	Multi-track Year-round	1248	95%	100%

# Recommendations Addressing School Choice Options

# Existing School - Powell Magnet ES (from Oak Grove ES)



Impacted Areas:



Proposed Base Areas

# Existing School - Powell Magnet ES (from Oak Grove ES)

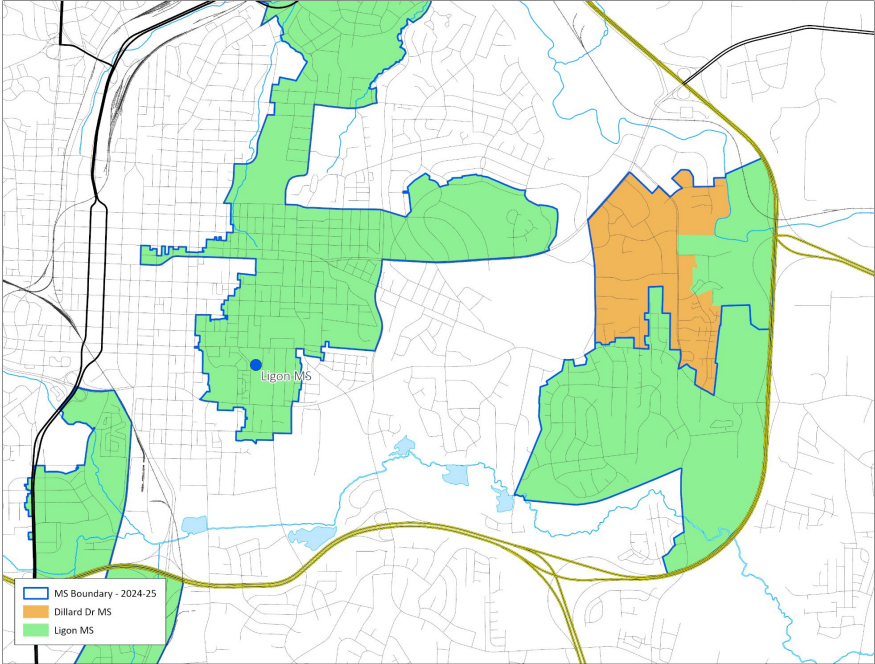
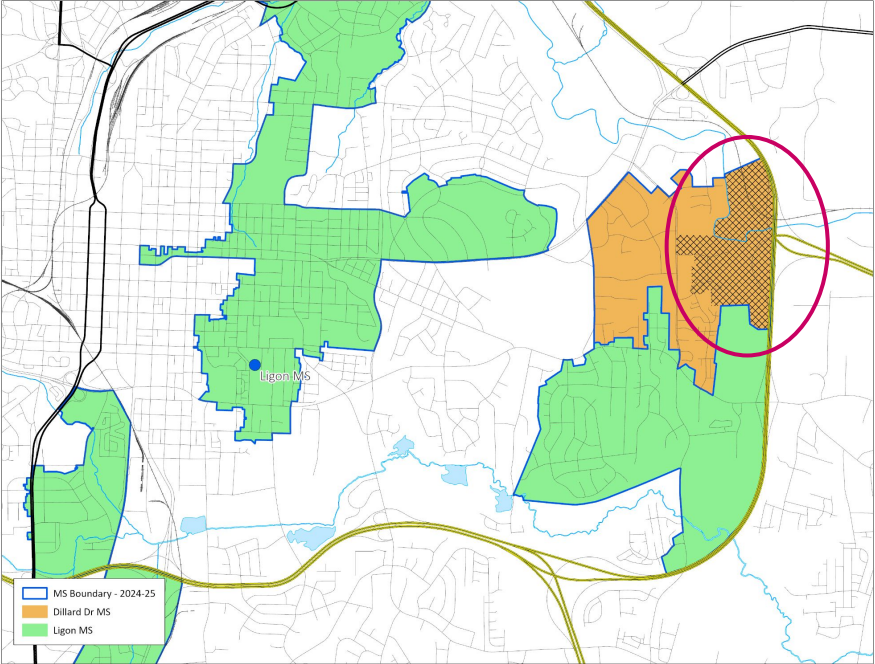
2024-25 Base School	Calendar	Capacity w/ Trailers	2025-26 Projected Utilization w/ Trailers	2026-27 Projected Utilization w/ Trailers
Oak Grove ES	Multi-track Year-round	716	78%	79%
Powell Magnet ES	Traditional	308	102%	101%

2025-26 Base School	Calendar	Capacity w/ Trailers	2025-26 Projected Utilization w/ Trailers	2026-27 Projected Utilization w/ Trailers
Oak Grove ES	Multi-track Year-round	716	78%	78%
Powell Magnet ES	Traditional	308	104%	103%

*\*Utilization based on building capacity, updated May 2024*

*\*\*"After" Projected Utilization assumes all impacted students will transition to the newly assigned school*

# Existing School - Ligon Magnet MS (from Dillard Drive Magnet MS)



Impacted Areas:



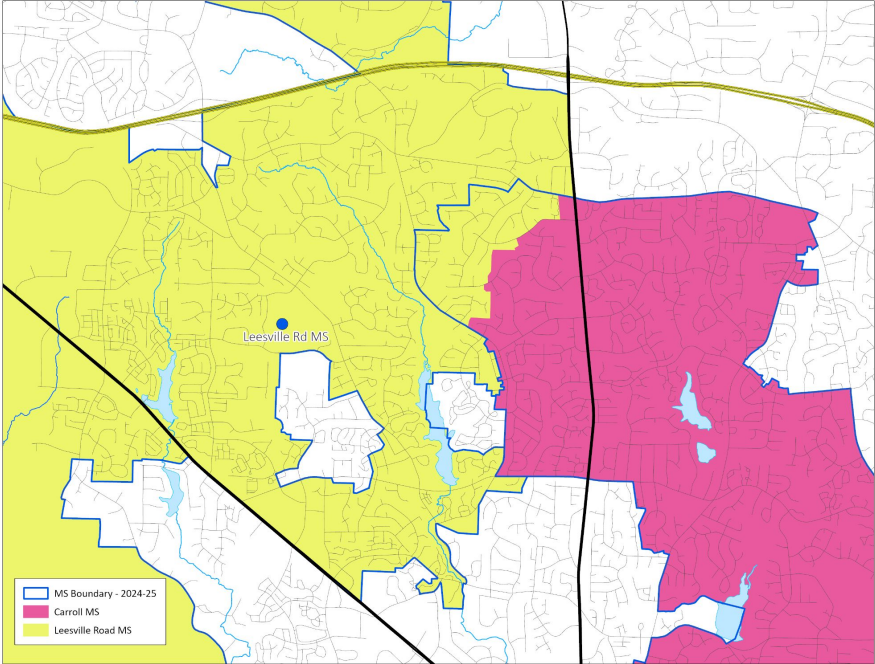
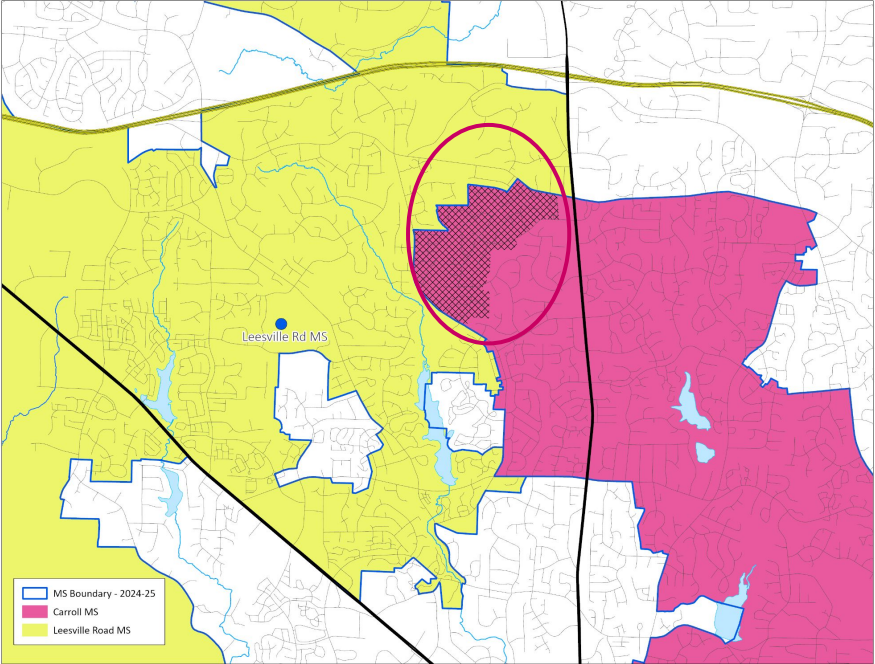
Proposed Base Areas

# Existing School - Ligon Magnet MS (from Dillard Drive Magnet MS)

2024-25 Base School	Calendar	Capacity w/ Trailers	2025-26 Projected Utilization w/ Trailers	2026-27 Projected Utilization w/ Trailers
Dillard Drive Magnet MS	Traditional	1092	91%	95%
Ligon Magnet MS	Traditional	1014	95%	97%

2025-26 Base School	Calendar	Capacity w/ Trailers	2025-26 Projected Utilization w/ Trailers	2026-27 Projected Utilization w/ Trailers
Dillard Drive Magnet MS	Traditional	1092	90%	95%
Ligon Magnet MS	Traditional	1014	95%	97%

# Existing School - Leesville Road MS (from Carroll Magnet MS)



Impacted Areas:



Proposed Base Areas

# Existing School - Leesville Road MS (from Carroll Magnet MS)

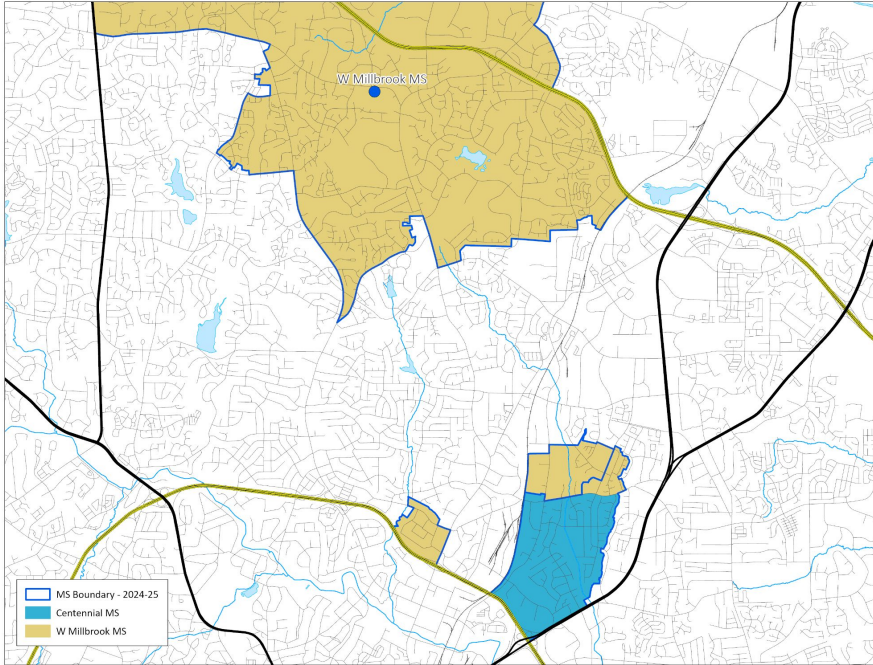
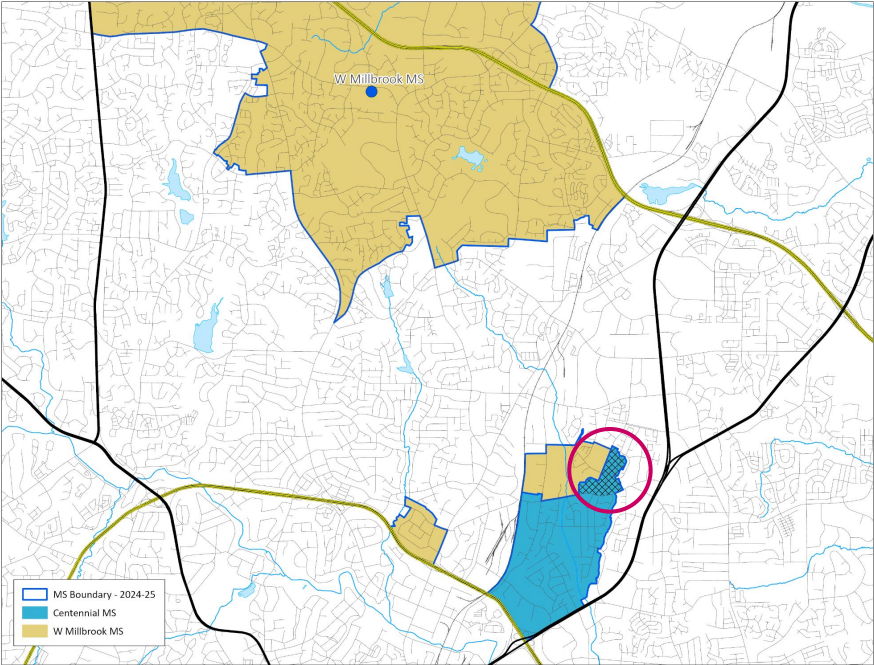
2024-25 Base School	Calendar	Capacity w/ Trailers	2025-26 Projected Utilization w/ Trailers	2026-27 Projected Utilization w/ Trailers
Carroll Magnet MS	Traditional	1014	89%	91%
Leesville Road MS	Traditional	1222	63%	64%

2025-26 Base School	Calendar	Capacity w/ Trailers	2025-26 Projected Utilization w/ Trailers	2026-27 Projected Utilization w/ Trailers
Carroll Magnet MS	Traditional	1014	88%	89%
Leesville Road MS	Traditional	1222	64%	65%

*\*Utilization based on building capacity, updated May 2024*

*\*\*"After" Projected Utilization assumes all impacted students will transition to the newly assigned school*

# Existing School - West Millbrook Magnet MS (from Centennial Magnet MS)



Impacted Areas:



Proposed Base Areas

# Existing School - West Millbrook Magnet MS (from Centennial Magnet MS)

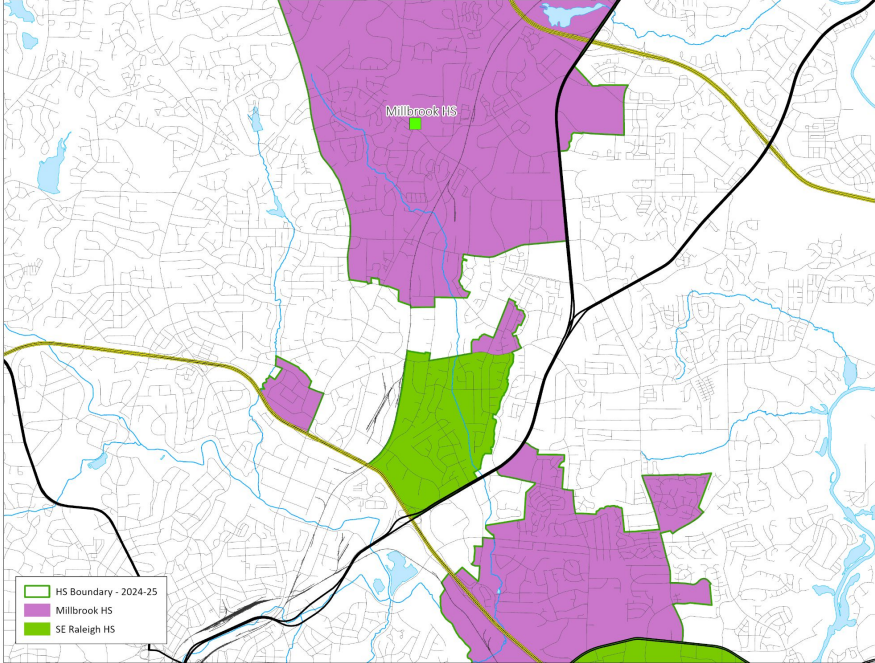
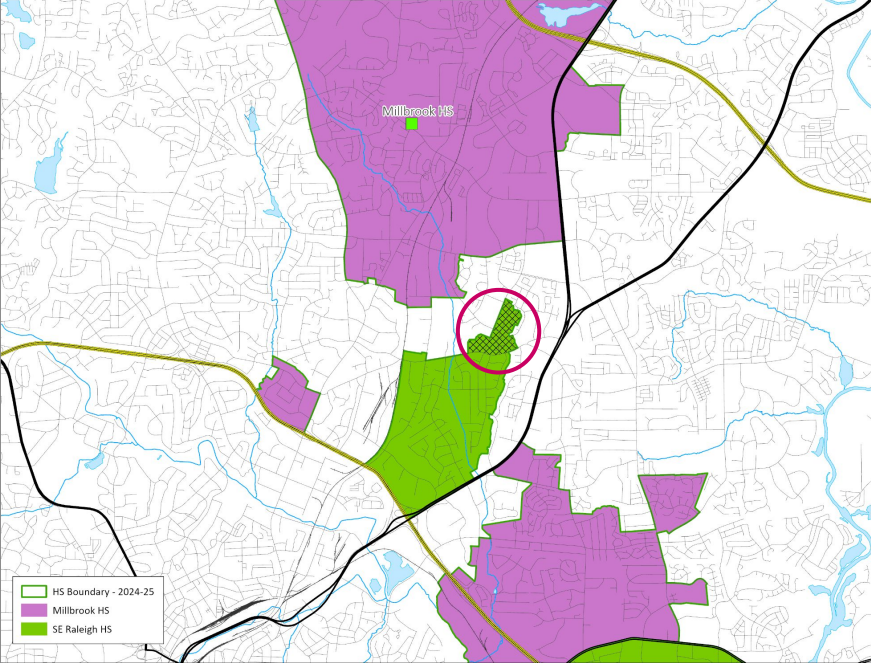
2024-25 Base School	Calendar	Capacity w/ Trailers	2025 Projected Utilization w/ Trailers	2026-27 Projected Utilization w/ Trailers
Centennial Magnet MS	Modified	624	83%	87%
West Millbrook Magnet MS	Traditional	1248	92%	90%

2025-26 Base School	Calendar	Capacity w/ Trailers	2025-26 Projected Utilization w/ Trailers	2026-27 Projected Utilization w/ Trailers
Centennial Magnet MS	Modified	624	79%	83%
West Millbrook Magnet MS	Traditional	1248	94%	93%

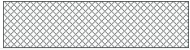
*\*Utilization based on building capacity, updated May 2024*

*\*\*"After" Projected Utilization assumes all impacted students will transition to the newly assigned school*

# Existing School - Millbrook Magnet HS (from Southeast Raleigh Magnet HS)



Impacted Areas:



Proposed Base Areas

# Existing School - Millbrook Magnet HS (from Southeast Raleigh Magnet HS)

2024-25 Base School	Calendar	Capacity w/ Trailers	2025-26 Projected Utilization w/ Trailers	2026-27 Projected Utilization w/ Trailers
Millbrook Magnet HS	Traditional	2558	100%	99%
Southeast Raleigh Magnet HS	Modified	1967	79%	79%

2025-26 Base School	Calendar	Capacity w/ Trailers	2025-26 Projected Utilization w/ Trailers	2026-27 Projected Utilization w/ Trailers
Millbrook Magnet HS	Traditional	2558	102%	100%
Southeast Raleigh Magnet HS	Modified	1967	76%	77%

*\*Utilization based on building capacity, updated May 2024*

*\*\*"After" Projected Utilization assumes all impacted students will transition to the newly assigned school*

# Recommendations for Calendar Application Changes to Support Transportation Efficiency

# Elementary Calendar Application Changes

Current Base	Current Calendar Application School(s)	Proposed Base	Proposed Calendar Application School
Apex (T)	Laurel Park (MTYR)	Pleasant Plains (MTYR)	n/a
Baucom (T)	Laurel Park (MTYR)	Penny Road (T)	Oak Grove (MTYR)
Buckhorn Creek (T)	Ballentine (MTYR) & Herbert Akins Road (MTYR)	Bowling Road (MTYR)	n/a
Buckhorn Creek (T)	Holly Springs (MTYR)	Rex Road (MTYR)	n/a
Fuquay Varina (T)	Ballentine (MTYR)	Bowling Road (MTYR)	n/a
Herbert Akins Road (MTYR)	Buckhorn Creek (T)	Buckhorn Creek (T)	n/a
Herbert Akins Road (MTYR)	Buckhorn Creek (T) & Fuquay-Varina (T)	Bowling Road (MTYR)	n/a
Herbert Akins Road (MTYR)	Buckhorn Creek (T) & Fuquay-Varina (T)	Holly Grove (MTYR)	Buckhorn Creek (T)

# Elementary Calendar Application Changes *(continued)*

Current Base	Current Calendar Application School(s)	Proposed Base	Proposed Calendar Application School
Holly Grove (MTYR)	Buckhorn Creek (T)	Rex Road (MTYR)	n/a
Holly Ridge (T)	Holly Springs (MTYR)	Herbert Akins Road (MTYR)	n/a
Holly Springs (MTYR)	Holly Ridge (T) & Oakview (T)	Holly Ridge (T)	n/a
Lincoln Heights Magnet (T)	Ballentine (MTYR) & Herbert Akins Road (MTYR)	Bowling Road (MTYR)	n/a
Lincoln Heights Magnet (T)	Herbert Akins Road (MTYR)	Buckhorn Creek (T)	n/a
Oak Grove (MTYR)	Penny Road (T)	Powell Magnet (T)	n/a

# Elementary Calendar Application Changes *(continued)*

Current Base	Current Calendar Application School(s)	Proposed Base	Proposed Calendar Application School
Olive Chapel (MTYR)	Baucom (T)	Baucom (T)	n/a
Olive Chapel (MTYR)	Baucom (T)	Scotts Ridge (T)	n/a
Salem (MTYR)	Baucom (T)	Baucom (T)	n/a
Scotts Ridge (T)	Laurel Park (MTYR) & Salem (MTYR)	Pleasant Plains (MTYR)	n/a
South Lakes (T)	Ballentine (MTYR)	Bowling Road (MTYR)	n/a

# Middle School Calendar Application Changes

Current Base	Current Calendar Application School(s)	Proposed Base	Proposed Calendar Application School
Carroll Magnet (T)	Pine Hollow (MTYR)*	Leesville Road (T)	n/a
Centennial Magnet (Mod)	Dillard Drive Magnet (T)	West Millbrook Magnet (T)	n/a
Dillard Drive Magnet (T)	Lufkin Road (MTYR)	Ligon Magnet (T)	n/a
Holly Grove (MTYR)	Holly Ridge (T)	Fuquay-Varina (T)	n/a

\*Pine Hollow Middle will operate on a traditional calendar beginning in the 2025-26 school year.

# Middle School Calendar Application Changes *(continued)*

Current Base	Current Calendar Application School(s)	Proposed Calendar Application School
Carroll Magnet (T)	Pine Hollow (MTYR)*	n/a
Leesville Road (T)	Pine Hollow (MTYR)*	n/a
Pine Hollow (MTYR)*	Leesville Road (T)	n/a
River Bend (T)	Rolesville (MTYR)*	n/a
Rolesville (MTYR)*	Wake Forest (T)	n/a
West Millbrook Magnet (T)	Pine Hollow (MTYR)*	n/a

\*Pine Hollow Middle and Rolesville Middle will operate on a traditional calendar beginning in the 2025-26 school year.

# Recommendations for Stability Rules for 2025-2026

# Opening a New Elementary School (2025-2026)

For students proposed to be assigned from an existing elementary school to one of the NEW elementary schools (**Bowling Road ES, Pleasant Plains ES or Rex Road ES**):

- Current students **rising into 4th or 5th grade** are eligible to remain at their current school with transfer status (no transportation) through the end of 5th grade
  - Rising kindergarten, 1st, 2nd or 3rd grade **siblings** of these students are eligible to join their older sibling with transfer status (no transportation) through the end of 5th grade

**NOTE: These requests must be submitted during the designated Stability Transfer Window**

# Opening a New High School (2025-2026)

For students proposed to be assigned from an existing high school to the **NEW Felton Grove High**:

- Current students **rising into 11th or 12th grade** will remain assigned to their current high school (*Felton Grove High will ONLY serve 9th & 10th grade in the first year*)
  - Rising 9th or 10th grade **siblings** of these students are eligible to join their older sibling with transfer status through the end of 12th grade

**NOTE: These requests must be submitted during the designated Stability Transfer Window**

## Other Elementary Assignment Changes (2025-2026)

For students proposed to be assigned from an **existing elementary school to an existing or renovated elementary school (Baucom Elementary)**

- Current students **rising into 1st through 5th grade** are eligible to remain assigned to their current school with transfer status (no transportation) through the end of 5th grade
  - Rising **kindergarten siblings** of these students are eligible to join their older siblings with transfer status (no transportation) through the end of 5th grade

**NOTE: These requests must be submitted during the designated Stability Transfer Window**

## Other Middle School Assignment Changes (2025-2026)

For students proposed to be assigned from an **existing middle school to an existing school or school with a new location (Fuquay-Varina Middle)**

- Current students **rising into 7th or 8th grade** are eligible to remain assigned to their current school with transfer status (no transportation) through the end of 8th grade
  - Rising **6th grade siblings** of these students are eligible to join their older siblings with transfer status (no transportation) through the end of 8th grade

**NOTE: These requests must be submitted during the designated Stability Transfer Window**

# Other High School Assignment Changes (2025-2026)

For students proposed to be assigned from an **existing high school to an existing high school**

- Current students **rising into 10th through 12th grade** are eligible to remain assigned to their current school with transfer status (no transportation) through the end of 12th grade
  - Rising **9th grade siblings** of these students are eligible to join their older siblings with transfer status (no transportation) through the end of 12th grade

**NOTE: These requests must be submitted during the designated Stability Transfer Window**

## Information & Updates

[www.wcpss.net/2025enrollmentproposal](http://www.wcpss.net/2025enrollmentproposal)

[www.wcpss.net/assignmentplanning](http://www.wcpss.net/assignmentplanning)

# Timeline & Next Steps

# Planning Timeline

**March 5, 2024 - Public Engagement Plan for the 2025-2026 WCPSS Enrollment Plan [BoE Work Session]**

**May 7, 2024 - Initial Planning Discussion [BoE Work Session]**

- May-June - Staff continues outreach (website updates, focus groups, etc.)
- May-June - Staff works on developing Initial Draft of 2025-2026 Enrollment Plan

**June 18, 2024 - Update on Progress of Public Engagement Plan [BoE Work Session]**

- June-September - Staff continues work on developing Initial Draft of 2025-2026 Enrollment Plan

**September 3, 2024 - Presentation of Initial Draft of 2025-2026 Enrollment Plan [BoE Work Session]**

- September-October - Staff hosts public engagement activities (in person and virtual)
- October - Staff prepares summary of feedback received and any recommended revisions

**October 15, 2024 - Review Feedback Received on Initial Draft [BoE Work Session]**

- October - Staff hosts final public engagement session(s)

**October/ November 2024 (TBD) - Public Hearing [BoE Special Called Meeting]**

**November 12, 2024 - Presentation of Final Draft of 2025-2026 Enrollment Plan for Review & Approval [BoE Work Session & Meeting]**

# Next Steps

- **September 3:** District website updated with initial draft information [wcpss.net/2025enrollmentproposal](http://wcpss.net/2025enrollmentproposal) & [www.wcpss.net/assignmentplanning](http://www.wcpss.net/assignmentplanning)
- **September 3 - October 4:** ThoughtExchange open and collecting feedback and questions on the initial draft ([wcpss.net/initialdraftfeedback](http://wcpss.net/initialdraftfeedback))
- **September 5 - September 24:** Host virtual and in-person public engagement sessions
  - September 10, 6:00-7:30 pm - Felton Grove HS (virtual)
  - September 12, 6:00-7:30 pm - Bowling Road ES & Rex Road ES (virtual)
  - September 16, 6:00-7:30 pm - Pleasant Plains ES & Baucom ES (virtual)
  - September 19, 6:00-7:30 pm - Other Recommendations & General Overview (virtual)
  - September 24, 6:00-8:00 pm - Open House/ General Overview (in-person)

# Information & Updates

[www.wcpss.net/2025enrollmentproposal](http://www.wcpss.net/2025enrollmentproposal)

[www.wcpss.net/assignmentplanning](http://www.wcpss.net/assignmentplanning)

**Questions?**

**Feedback, Thoughts & Ideas...**

# Addendum

Board Policy 4150, Detailed Maps, Data Reports

# **Board Policy 4150: Section A**

## **Drawing of School Attendance Areas**

# Board Policy 4150: Section A

## A. Drawing of School Attendance Areas

The superintendent shall recommend to the Board of Education school assignment areas for the schools in the system. The Board will review the Superintendent's recommendation and make adjustments when needed. Assignment area boundaries shall be shown on maps approved by the Board and open to public inspection.

The Board shall complete any review of the assignment areas by January 1. Any proposed changes in the school assignment areas after January 1 shall require notice, a waiver of this policy provision, and a public hearing. Notification of assignment for students for the coming school year shall be made and distributed prior to April 1.

1. The assignment areas will be developed by balancing, to the extent reasonable, the goals and factors set forth below and will include target ranges, where appropriate, to accomplish these goals and factors:

# Board Policy 4150: Section A (*continued*)

## a. Student Achievement

To the extent practicable, student populations at each school will provide an optimal opportunity for academic success for all students. Factors for consideration include:

- 1) providing an opportunity for families to apply to designated application schools;
- 2) minimizing high concentrations of low-performing students at each school; and
- 3) minimizing high concentrations of students from low income families at each school.

# Board Policy 4150: Section A (*continued*)

## b. Stability

To the extent practicable, a student who is reassigned will be provided an opportunity to stay at the current school for one additional year if it is the terminal grade for an elementary or middle school (grades 5 and 8), and the student's siblings will be provided an opportunity to attend the same school for the one year period. The student and siblings must apply for these transfers at the designated time.

To the extent practicable, any student currently in high school who is reassigned from an existing school to an existing school will be provided an opportunity to stay at the current school until the terminal grade (grade 12). The student must apply for this transfer at the designated time.

Additional opportunities to remain at the current school, including for siblings, may be included in the annual student enrollment plan.

A change in domicile does not preserve the previous school assignment. However, Early College and Magnet application assignments are valid through the terminal grade of the school.

# Board Policy 4150: Section A (continued)

## c. Proximity

To the extent practicable, base school assignments will be within a reasonable distance of the student's home. Factors for consideration include:

- 1) allowing students living within the immediate vicinity of a school, defined by the assignment plan, to attend that school; and
- 2) minimizing splitting of neighborhoods when developing base attendance areas.

## d. Operational Efficiency

To the extent practicable, assignments will optimize the use of school facilities and transportation resources. Factors for consideration include:

- 1) minimizing under-enrolled schools;
- 2) minimizing overcrowded schools; and
- 3) maximizing transportation efficiencies.

# Detailed Maps

# Detailed Maps Included in the Agenda Attachments

- Detailed maps in pdf format showing the proposed base areas for all schools included in the initial draft of the WCPSS 2025-2026 School Enrollment Plan
- Additional information, including descriptions of the recommended changes and links to an online address look-up tool are on our district website at [www.wcpss.net/2025enrollmentproposal](http://www.wcpss.net/2025enrollmentproposal)

# Data Reports

# Data Reports Included in the Agenda Attachments

## 2024-2025 Base Population Report (pdf file)

- Data related to the number of students assigned as base to each school (indicated number of base students attending the base assigned school and number of base students attending other WCPSS schools as application, transfer, etc.)

## 2024-2025 School Population Report (pdf file)

- Data related to the actual enrollment at each school (includes base, application, transfers, etc.)