

A photograph of two young women in a classroom setting. They are looking at a large whiteboard or poster. The woman in the foreground has long brown hair and is wearing a white shirt. She is holding a yellow pencil and pointing at the board. The woman behind her is wearing glasses and a maroon shirt. The background shows a classroom with desks, a window, and a television.

Office of Student Assignment

WCPSS 2025-2026 School Enrollment Plan

Feedback Review

A Multi-year Approach to Growth Management

Board of Education Work Session
October 15, 2024

Purpose

Staff is here today to review feedback received on the initial draft of the 2025-2026 school enrollment plan.

Our goals for today's session are to:

- Share feedback received from our public engagement activities
- Provide an overview of recommended adjustments to the initial draft based on feedback
- Seek feedback from the Board to assist staff in preparing the Final Draft of the 2025-2026 School Enrollment Plan for approval by the Board

Strategic Plan Alignment

Family & Community Engagement

Aim 6: District Communications Structures

Provide clear, accessible, and consistent information about family involvement opportunities.

Aim 12: Community Engagement

Build strong relationships among staff, families, and community organizations in order to share resources and promote well-being.

12.1 Increase support of non-English speaking families

Ensure multilingual and non-English speaking families and all schools are aware of the support and services available from the district to help them engage fully with their school and our district.

12.2 Build strong community partnerships

Develop and share with district leaders a systemic approach to building partnerships with and seeking input and support from community organizations with a focus on partners in underserved communities.

Strategic Plan Alignment

(continued)

Operational Effectiveness

Aim 14: Differentiated Resource Allocation

Differentiate resource allocation to provide PreK-12 students with equitable access to high-quality teachers and principals, and sufficient support services.

14.3 Evaluate School Choice, Planning and Assignment Programs

Evaluate student assignment policy, practices, and magnet programs to foster the balance and socio-economic integration of schools, in alignment with the magnet objectives of reducing high concentrations of poverty, promoting school integration and diversity, maximizing use of school facilities, and providing innovative and/ or expanded educational opportunities.

Aim 19: Transportation Upgrades

Evaluate practices to ensure safe, timely, efficient, and reliable transportation services.

19.2 Incorporate Bus Routing in Student Assignment Decisions

Problem-solve bus route challenges with strategic student assignment changes.

Policy Alignment

WCPSS Board Policy 4150: School Assignment and Transfers



Section A. Drawing of School Attendance Areas

1. The assignment areas will be developed by balancing, to the extent reasonable, the goals and factors set forth below and will include target ranges, where appropriate, to accomplish these goals and factors:
 - a. **Student Achievement**
 - b. **Stability**
 - c. **Proximity**
 - d. **Operational Efficiency**

WCPSS Board Policy 4150 *(continued)*

Student Achievement*

- To the extent practicable, student populations at each school will provide an optimal opportunity for academic success for all students

Stability*

- To the extent practicable, a student rising into a terminal grade (5th, 8th, 12th) who is reassigned will be provided an opportunity to stay at the current school for at least one additional year, siblings will also be provided an opportunity to attend for at least the one year period

Proximity*

- To the extent practicable, base school assignments will be within a reasonable distance of the student's home

Operational Efficiency*

- To the extent practicable, assignments will optimize the use of school facilities and transportation resources

**Note: Updated video explaining the four pillars is now available.*

Overview

- **Review & Updates (9)**
 - Review Progression of Planning Process
- **Responses to Community Requests and Questions (39)**
- **Adjustments to the Initial Draft of 2025-26 School Enrollment Plan (109)**
 - Review of Recommended Adjustments
 - Stability Rules for 2025-2026
 - Related to the Opening of New Schools
 - Related to Existing Schools
 - Calendar Application Changes
 - Timelines for District Processes
- **Planning Timeline & Next Steps (132)**
- **Addendum (137)**

Review & Updates

2025-2026 School Enrollment Planning Process



Review Progression of Planning Process

Preparation of the Annual Enrollment Plan

1

Presentation of the Annual Enrollment Forecast (1-year and 10-year projections)

2

Review of Projected Crowding for the Next School Year

3

Review of Capital Improvement Plan (CIP) Updates (7-year plan)

4

Preparation of the Annual Enrollment Plan

5

Review and Approval of Capped Schools due to Overcrowding Concerns

6

Review of Options to Address Other School Utilization Concerns

1. Public engagement to capture thoughts and ideas to support the development of the next enrollment plan
2. Review of goals for the next enrollment plan with the Board
3. Presentation of an initial draft of the enrollment plan
4. Public engagement to help families review and understand the recommendations in the initial draft plan
5. Review of public feedback with the Board and presentation of any recommended revisions to the initial draft
6. Public hearing on the draft enrollment plan by the Board
7. Presentation of final draft of the enrollment plan for the Board's review and approval

March - May

Assignment Planning Information & Updates

www.wcpss.net/2025enrollmentproposal

www.wcpss.net/assignmentplanning

Preparation of the Annual Enrollment Plan

1

Presentation of the Annual Enrollment Forecast (1-year and 10-year projections)

2

Review of Projected Crowding for the Next School Year

3

Review of Capital Improvement Plan (CIP) Updates (7-year plan)

4

Preparation of the Annual Enrollment Plan

5

Review and Approval of Capped Schools due to Overcrowding Concerns

6

Review of Options to Address Other School Utilization Concerns

1. Public engagement to capture thoughts and ideas to support the development of the next enrollment plan
2. Review of goals for the next enrollment plan with the Board
3. Presentation of an initial draft of the enrollment plan
4. Public engagement to help families review and understand the recommendations in the initial draft plan
5. Review of public feedback with the Board and presentation of any recommended revisions to the initial draft
6. Public hearing on the draft enrollment plan by the Board
7. Presentation of final draft of the enrollment plan for the Board's review and approval

May

Focus Areas for the 2025-2026 Enrollment Plan

Opening of New Schools

- Bowling Road Elementary
- Pleasant Plains Elementary
- Rex Road Elementary
- Felton Grove High

Address Capped/ Overcrowded Schools Where Possible

Address School Choice Options

Continue to align school choice initiatives that support Policy 4150 and the district's strategic plan to support the magnet objectives of:

- reducing high concentrations of poverty and promoting integration and diversity
- improve operational efficiency by maximizing use of school facilities and improving transportation efficiency

Preparation of the Annual Enrollment Plan

1

Presentation of the Annual Enrollment Forecast (1-year and 10-year projections)

2

Review of Projected Crowding for the Next School Year

3

Review of Capital Improvement Plan (CIP) Updates (7-year plan)

4

Preparation of the Annual Enrollment Plan

5

Review and Approval of Capped Schools due to Overcrowding Concerns

6

Review of Options to Address Other School Utilization Concerns

1. Public engagement to capture thoughts and ideas to support the development of the next enrollment plan
2. Review of goals for the next enrollment plan with the Board
3. Presentation of an initial draft of the enrollment plan
4. Public engagement to help families review and understand the recommendations in the initial draft plan
5. Review of public feedback with the Board and presentation of any recommended revisions to the initial draft
6. Public hearing on the draft enrollment plan by the Board
7. Presentation of final draft of the enrollment plan for the Board's review and approval

September
3

Enrollment Plan Information & Updates

www.wcpss.net/2025enrollmentproposal

www.wcpss.net/assignmentplanning

Preparation of the Annual Enrollment Plan

1

Presentation of the Annual Enrollment Forecast (1-year and 10-year projections)

2

Review of Projected Crowding for the Next School Year

3

Review of Capital Improvement Plan (CIP) Updates (7-year plan)

4

Preparation of the Annual Enrollment Plan

5

Review and Approval of Capped Schools due to Overcrowding Concerns

6

Review of Options to Address Other School Utilization Concerns

1. Public engagement to capture thoughts and ideas to support the development of the next enrollment plan
2. Review of goals for the next enrollment plan with the Board
3. Presentation of an initial draft of the enrollment plan
4. Public engagement to help families review and understand the recommendations in the initial draft plan
5. Review of public feedback with the Board and presentation of any recommended revisions to the initial draft
6. Public hearing on the draft enrollment plan by the Board
7. Presentation of final draft of the enrollment plan for the Board's review and approval

September

How Feedback Impacts Planning

Stability Rules - New Elementary Schools

- *Historically, ONLY rising 5th grade students & their younger siblings were eligible, and for ONLY one year*
- NOW, both rising 4th and 5th grade students & their younger siblings are eligible through the 5th grade

Stability Rules - New High Schools

- *Historically, younger siblings of eligible older students were allowed to remain until their older sibling graduated*
- NOW, younger siblings of eligible older students are allowed to remain through the 12th grade

Stability Rules - Existing Elementary Schools

- *Historically, ONLY rising 5th grade students & their younger siblings were eligible, and for ONLY one year*
- NOW, rising 1st - 5th grade students & their younger siblings are eligible through the 5th grade

Stability Rules - Existing High Schools

- *Historically, ONLY rising 12th grade students & their younger siblings were eligible, and for ONLY one year*
- NOW, rising 10th - 12th grade students & their younger siblings are eligible through the 12th grade

How Feedback Impacts Planning *(continued)*

Assignment Plan Timeline

- *Historically, the first draft was released in December and the plan was approved in February*
- NOW, the first draft is released in September, and the plan is approved in November

Frequency of Base Assignment Changes

- *Historically, as needed to address enrollment growth - potentially as frequent as every year*
- NOW, no more frequently than every three years

Operating Calendar

- 2024-25: Pleasant Grove Elementary converted to multi-track year-round

Opportunities for Public Input on New Schools

- *Historically, only after the first draft of the plan was released in the fall*
- NOW, as early as March, two years prior to the opening of a new school

Opportunities for Support in Transitioning to New Schools

- *Historically, only after the enrollment plan was approved*
- NOW, an Open House event is held in September, following the release of the first draft of the plan

Stability of Assignment

- *Historically, assigned enough existing neighborhoods to new schools to help fill new schools (led to near-term reassignments)*
- NOW, assign a mixture of existing and new/ incomplete developments to new schools and allow them to fill gradually

Fall Public Engagement: *Participation*

Session/ Topic	Session Date	# Participants
Felton Grove HS & Western Region	September 10	54
Bowling Road ES, Rex Road ES & Southern Region	September 12	57
Pleasant Plains ES, Baucom ES & Western Region	September 16	150
Raleigh Area & General Overview	September 19	23
Open House	September 24	95
<i>Totals</i>		379

Total Participation in Virtual and In-Person Events

379 Total Participants

- 284 Virtual
- 95 In Person

Felton Grove HS & Western Region: *Key Takeaways*

Stability for Rising 10th Graders: minimize disruptions for these students

Impact on Special Programs & 504 Students: assurance of program continuity

Clarity & Transparency in Assignment Decisions: better understanding of planning process

Consistent Reassignments in Some Areas: frustration related to regular assignment changes

Community Input & Influence: assurance that feedback is genuinely considered

Concerns about Transportation Safety: concerns about teen drivers crossing Hwy 55

Future Planning for Growth: what long-term plans are in place, particularly for middle schools

Uncertainty About New School Offerings: ensure access to comprehensive high school experience

Logistics & Timeline for Stability Transfers: clarity on stability transfer process & timeline

Continued Access to Advanced Courses: ensure academic progression is not hindered

Bowling Road ES, Rex Road ES & Southern Region: *Key Takeaways*

Desire for Stability Across Grades & Siblings: minimize disruptions for students & younger siblings

Uncertainty Around the Draft Plan: whether the current plan is draft of final

Impact of Reassignments on Family Logistics: how reassignments will disrupt family routines

Concerns About Track Assignments & Class Sizes: how are tracks assigned & class sizes managed

Quality & Staffing of New Schools: assurance that schools will be staffed with qualified teachers

Need for Clear Communication & Timelines: clear timelines related to final approval of plan

Transportation Concerns: lack of transportation for stability transfers

Request for Alternatives & Consideration of Neighborhood Needs: desire for calendar options

Impact on Future Enrollment & Capacity Planning: impact on enrollment at existing schools over time

Transparency in the Planning Process: concerns are heard & meaningful to final assignment plan

Pleasant Plains ES, Baucom ES & Western Region: *Key Takeaways*

Priority of Established Neighborhoods: existing neighborhoods should have stability

Calendar Consistency: disruptions shifting between year-round & traditional calendars

Transportation & Safety: transportation routes, safety & accessibility

Stability & Community Impact: frustrated over frequent school changes & desire for stability

Impact on Siblings: seek solutions that allow children to attend the same school or calendar

Feedback & Transparency: call for more details earlier in the process

Capacity & Utilization Concerns: current or future overcrowding not sufficiently addressed

Alternatives for Calendar Preferences: options to remain on traditional calendar

Traffic & Infrastructure Planning: traffic patterns & congestion issues

Representation & Influence: how to be heard & have input considered

Raleigh Area & General Overview: *Key Takeaways*

Concern Over Stability & Sibling Cohesion:
assurance that siblings can stay together

Frustration with Inconsistent Stability Rules:
perceived inconsistency across different schools

Impact of Reassignment on Children with Special Needs: potential disruption of moving to new school

Calendar Change Challenges: difficult to manage changes in school calendar

Desire for Clearer Communication: how to involve families without school aged children

Logistical Concerns with Transportation & Proximity: lack of transportation with stability transfers & increased distance to new school

Worries About Increased Bus Dependence & Traffic: greater dependency on busing & increased congestion in some areas

Open House: Helpful Resources

What information or resources were most helpful to you during the event?

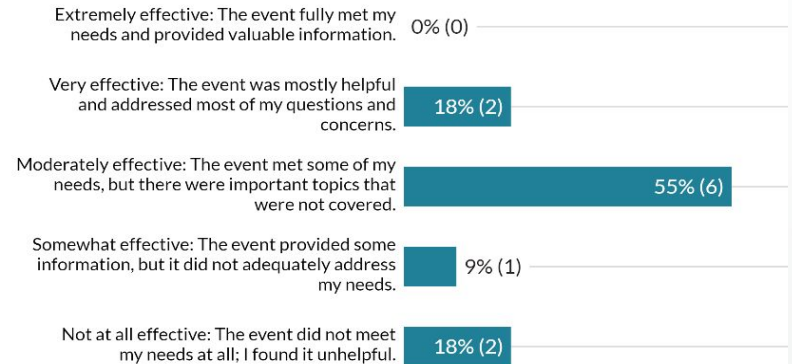
- Academics: 41%
- Other (school tables & Board members): 33%
- Facilities, Design & Construction: 25%
- Long Range Planning: 17%
- Special Education Services: 17%
- Community Partnerships: 8%
- Magnet & Curriculum Enhancement Programs: 8%
- Transportation: 8%

Open House: Opportunities to Improve & Event Effectiveness

Were there any topics or questions you wish had been addressed that could enhance your experience at future events?

- How calendar recommendations are developed for new schools
- More information on the specific recommendations included in the plan
- Option to host later in the process, when more specific information can be provided about new schools (principal, courses, etc.)

How would you rate the overall effectiveness of the event in meeting your needs as a family?



Initial Draft ThoughtExchange

What aspects of the proposed school enrollment plan are most important for your family, and what questions do you still need answered (if any) to help you better understand the potential impacts on your family's school choices?

Overall Participation in Online Forum

1,339 Total Participants

1,503 Thoughts

34,358 Ratings

23 Ratings Ratio



1,339
Participants



1,503
Thoughts



34,538
Ratings

Which of the following best describes your role?



1259
Responses

%	Person Icon	Answer <i>(Multiple select)</i>
94%	(1186)	Parent/Guardian
1%	(10)	Student
6%	(71)	Community Member
2%	(30)	Staff

What is your race/ethnicity?

%	Person Icon	Answer
0%	(6)	American Indian or Alaskan Native
20%	(243)	Asian
4%	(43)	Black or African American
4%	(50)	Hispanic or Latino
0%	(1)	Native Hawaiian or Pacific Islander
5%	(55)	Two or More Races/Ethnicities
64%	(775)	White
3%	(39)	Other

Which of the following best describes where you live within Wake County?

%	Person Icon	Answer
2%	(22)	Northwestern Wake (Northwest Raleigh and Morrisville areas)
4%	(53)	Northern Wake (North Raleigh area)
2%	(27)	Northeastern Wake (Northeast Raleigh, Rolesville and Wake Forest areas)
1%	(8)	Eastern Wake (Knightdale, Wendell and Zebulon areas)
0%	(6)	Central Wake (Central Raleigh and Southeast Raleigh areas)
1%	(11)	Southeastern Wake (Garner area)
10%	(128)	Southern Wake (Fuquay-Varina area)
51%	(624)	Southwestern Wake (South Apex and Holly Springs areas)
28%	(344)	Western Wake (Apex and Cary areas)

Top Themes

Proximity & Commute

- highlight the importance of proximity to schools for reducing travel time, improving safety, and minimizing the burden on families

Stability & Consistency

- emphasize the importance of maintaining existing school assignments to avoid disrupting students' academic progress, social connections, and emotional well-being

Calendar Alignment

- assert calendar alignment is seen as crucial for maintaining family stability and reducing logistical challenges

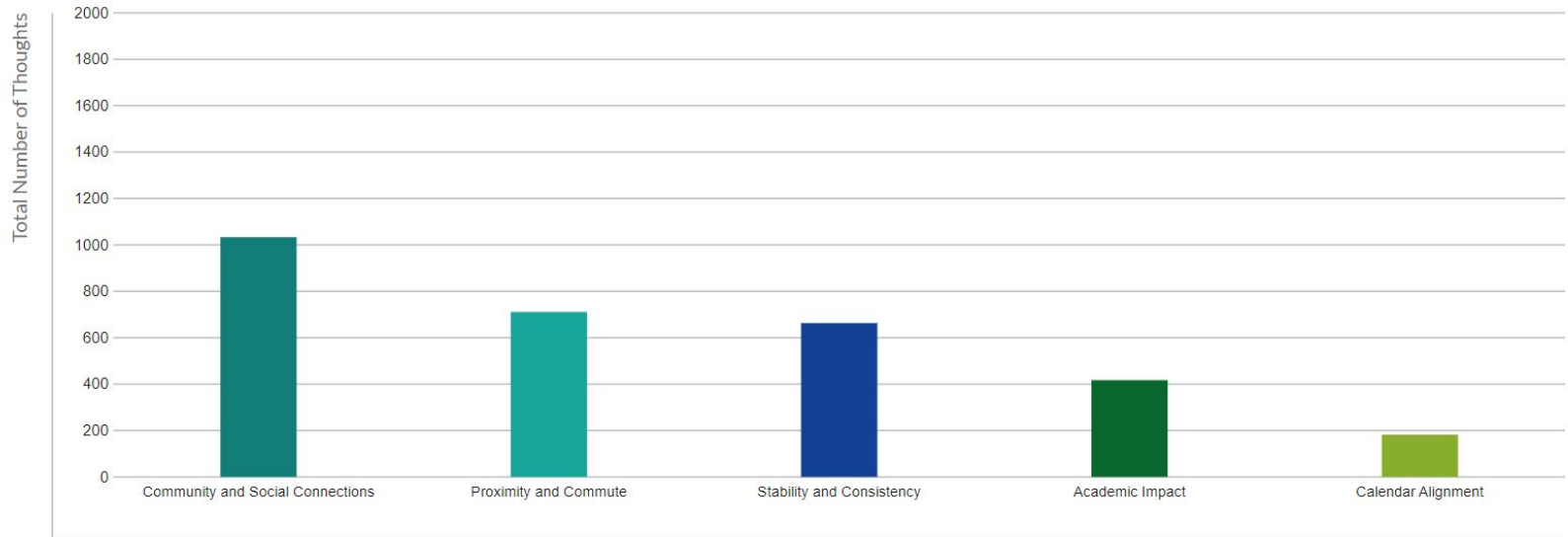
Academic Impact

- concerns about the availability and quality of academic resources at new schools, especially for high school students

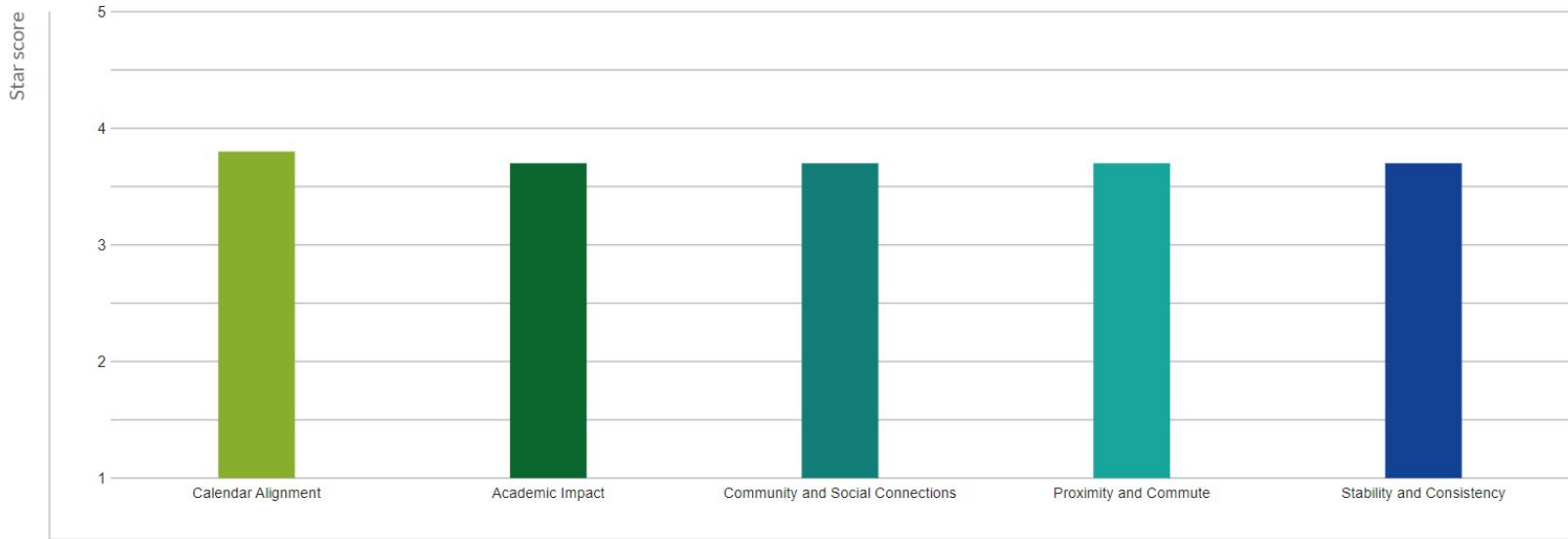
Community & Social Connections

- emphasize the importance of keeping students with their established peer groups to support their social and emotional development

Top Themes by Total Thoughts



Top Themes by Star Score



Top Rated Thoughts

The proposed changes for Pearson Farms has the middle school calendar mis-matching the elem & HS calendar. Consider keeping these kids at OCE. Calendar inconsistencies are detrimental to student success and causes hardship for families. Please re-look at Pearson Farms and the OCE zoning.

4.6  (19 )
Ranked #1 of 1503

We live in Ashley Downs...and NOT zoned for OCE? I'm sorry, but I literally couldn't live closer to OCE and yet, neighborhoods further out are zoned for OCE, but not us? How in the world? REJECT.

4.5  (21 )
Ranked #2 of 1503

Why would you make my child have to be on public transportation when that is lacking and we can WALK to school We can walk to school, but with a change, school transportation will be required.

4.4  (35 )
Ranked #3 of 1503

Key Takeaways

Proximity and Commute Concerns

Increased commute times and distances to new schools; Importance of proximity to current schools for convenience and safety, especially for young children and new teen drivers

Calendar Consistency

Challenges posed by switching between traditional and year-round school calendars; Logistical difficulties and emotional stress caused by having children on different school schedules

Stability and Continuity

Importance of keeping children in the same schools to maintain friendships, academic progress, and emotional well-being; Frequent reassignments are seen as disruptive and detrimental to student success

Key Takeaways *(continued)*

Impact on Social and Academic Well-being

Impact on students' social lives and academic performance due to school changes; Established relationships with peers and teachers, as well as potential disruptions to extracurricular activities and advanced academic courses

Community and Neighborhood Unity

Sense of community and neighborhood unity that comes from attending local schools; Splitting neighborhoods and assigning students to distant schools impacts community bonds and makes parental involvement more challenging

Common Ground and Differences

Side A	Common Ground	Side B
Proximity & Commute Considerations	Stability for Students	Calendar Consistency for Families
Calendar Consistency for Families	Stability for Students	Academic Offerings at New Schools
Stability for Rising 10th Graders	Proximity & Commute Considerations	Calendar Consistency for Families

Enrollment Plan Information & Updates

www.wcpss.net/2025enrollmentproposal

www.wcpss.net/assignmentplanning

Preparation of the Annual Enrollment Plan

1

Presentation of the Annual Enrollment Forecast (1-year and 10-year projections)

2

Review of Projected Crowding for the Next School Year

3

Review of Capital Improvement Plan (CIP) Updates (7-year plan)

4

Preparation of the Annual Enrollment Plan

5

Review and Approval of Capped Schools due to Overcrowding Concerns

6

Review of Options to Address Other School Utilization Concerns

1. Public engagement to capture thoughts and ideas to support the development of the next enrollment plan
2. Review of goals for the next enrollment plan with the Board
3. Presentation of an initial draft of the enrollment plan
4. Public engagement to help families review and understand the recommendations in the initial draft plan
5. Review of public feedback with the Board and presentation of any recommended revisions to the initial draft
6. Public hearing on the draft enrollment plan by the Board
7. Presentation of final draft of the enrollment plan for the Board's review and approval

Today

Responses to Community Requests and Questions

Request/ Question:

Families assigned to the new Felton Grove High prefer the school to open with 9th grade, rather than 9th and 10th grade

Community Rationale:

- *Concerns about stability for students switching schools between 9th and 10th grade*
- *Worries about academic, extracurricular, and athletic opportunities*
- *Families value the community connections they have established at the current school*

Response/ Rationale for Recommendation:

- **Full Program Offerings:** Opening with both 9th and 10th grades ensures there are enough students to support a complete academic program, offer requested extracurricular activities, and field a full range of sports teams.
- **Build a School Community:** Having both 9th and 10th grades will help create a strong sense of community by allowing more students to shape the school's culture and traditions from the start.
- **Relieving Overcrowding:** Nearby schools, especially Apex Friendship High, are severely overcrowded. Opening Felton Grove High with both grades helps alleviate this issue, ensuring a better learning environment for all students.
- **Support for Stability:** WCPSS will honor stability transfer requests for rising 9th and 10th grade students who have **siblings** in 11th or 12th grade that will remain at Apex Friendship High, Apex High or Holly Springs High. This ensures that siblings can stay together, even though the new Felton Grove High will serve 9th and 10th grades when it opens.
- **Transition Support:** WCPSS is committed to supporting families through the transition, with resources available to help students and families feel welcomed and connected in their new school community.
- **Long-term Stability:** WCPSS understands the importance of stability, and opening with both grades helps avoid unnecessary transitions in the future for these students.

Request/ Question:

Families with current 9th grade students in the Academy of Engineering (AoE) at Apex Friendship High or the Academy of Information Technology (AoIT) at Apex High are concerned about being assigned to the new Felton Grove High as rising 10th graders

Community Rationale:

- *The Academy programs are cohort-based, meaning students progress together through a specialized curriculum*
- *Families worry that moving schools would disrupt their student's ability to progress through and complete this program successfully*

Response/ Rationale for Recommendation:

- **Program Continuity & Cohort Considerations:** These are cohort-based programs, where 'new' students cannot join these programs after the 9th grade. In addition, these specific programs will not be available at the new Felton Grove High in its opening year.
- **Historical Perspective:** In previous years, this accommodation has been made for students participating in other CTE Academies. However, these were processed as Request for Transfer applications during the Official Request for Transfer Window in late February/ early March.
- **Transition Support:** For those that elect to attend the new Felton Grove High, instead of remaining in their current Academy, WCPSS is committed to supporting families through the transition. Resources will be available to help students and families feel welcomed and connected in their new school community.
- **Planned Adjustment:** Allow students rising into 10th grade who are verified participants in the Academy of Engineering or Academy of Information Technology to be eligible for a stability transfer (no district transportation) to remain at their current school and continue participating in their respective program.

Request/ Question:

Many families, particularly at the elementary level, have asked why there are different stability rules for those assigned to a new elementary school compared to those being reassigned from one existing school to another

Community Rationale:

- *Desire for expanded stability across all families, regardless of whether they're assigned to a new or existing school*
- *Concerns about the potential disruption to students' academic and social development if required to change schools*
- *Families value the community connections they have established at the current school*

Response/ Rationale for Recommendation:

- **New Schools:** To ensure a strong and equitable academic program at our new elementary schools, it's important to have a sufficient student population. For these transitions, we've eased the rules to allow rising 4th and 5th graders to remain at their current school, along with any younger siblings, including rising Kindergarteners.
- **Existing Schools:** Existing elementary schools already have established academic programs and staffing. As a result, we've extended the stability rules to allow any student (rising 1st-5th grade) and their rising Kindergarten siblings to remain at their current school.
- **Focus on Stability:** The goal is to offer as much stability as possible to families while meeting the district's needs to efficiently operate our new schools. This approach is intended to balance stability with operational needs, ensuring both new and existing schools are well-supported.
- **Transition Support:** WCPSS is committed to supporting families through the transition, with resources available to help students and families feel welcomed and connected in their new school community.

Request/ Question:

Families in the Ashley Downs and Pearson Farms subdivisions have asked to remain assigned to Olive Chapel Elementary, rather than being assigned to the nearby newly renovated Baucom Elementary

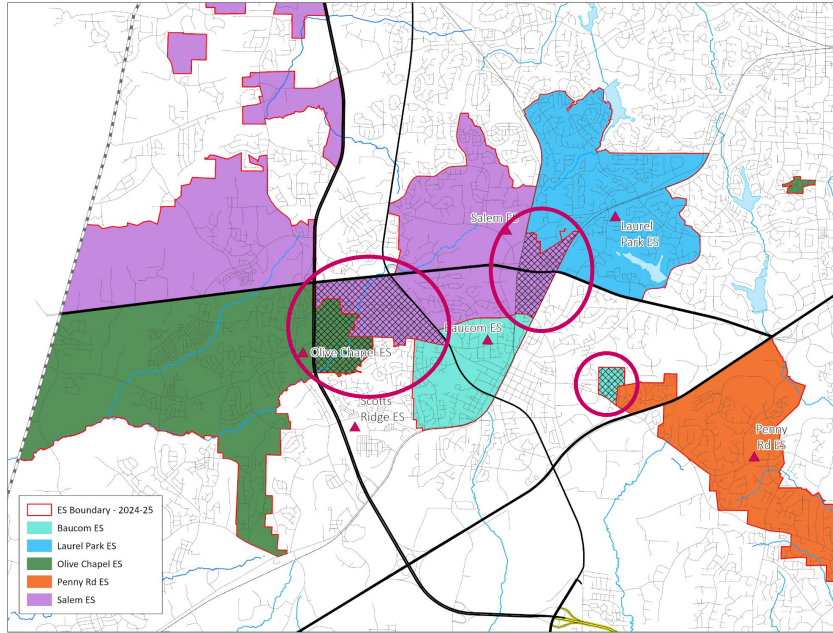
Community Rationale:

- *Current school has a sidewalk connection, though it involves crossing a high-speed road and a major highway (540)*
- *Current school is most proximate school to these neighborhoods*
- *Families value the community connections they have established at the current school*

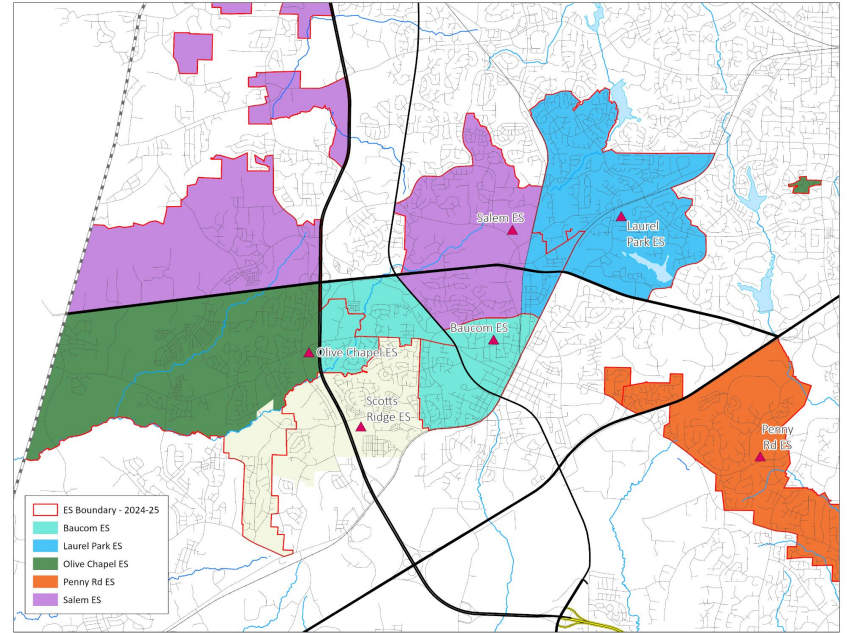
Renovated School - Baucom ES (from Olive Chapel ES & Salem ES)

Existing School - Laurel Park ES & Penny Rd ES (from Baucom ES)

Review

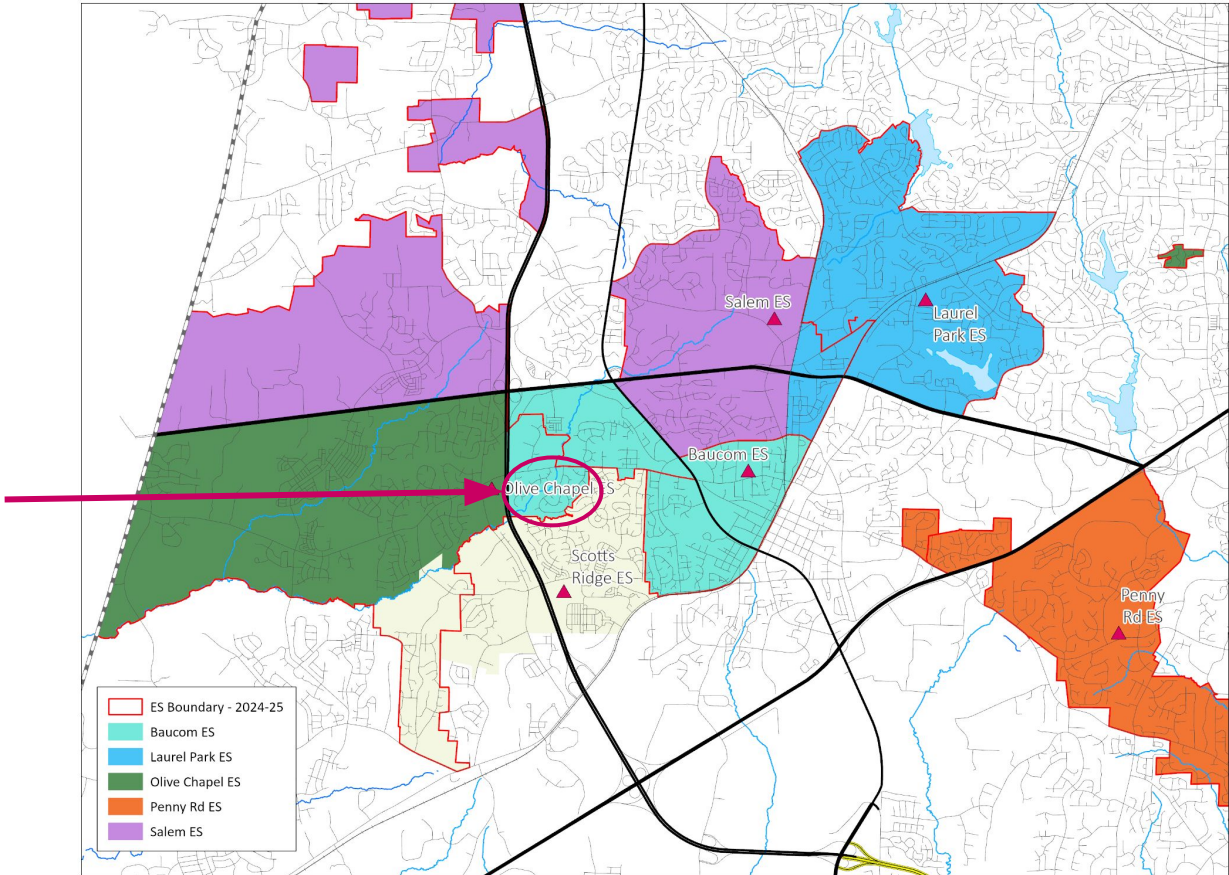


Impacted Areas: 



Proposed Base Areas

Ashley Downs & Pearson Farms subdivisions



Renovated School - Baucom ES (from Olive Chapel ES & Salem ES)

Existing School - Laurel Park ES (from Salem ES)

2024-25 Base School	Calendar	Capacity w/ Trailers	2025-26 Projected Utilization w/ Trailers	2026-27 Projected Utilization w/ Trailers
Baucom ES	Traditional	716	91%	91%
Laurel Park ES	Multi-track Year-round	854	79%	77%
Olive Chapel ES	Multi-track Year-round	856	144%	147%
Penny Road ES	Traditional	570	85%	84%
Salem ES	Multi-track Year-round	856	99%	108%

2025-26 Base School	Calendar	Capacity w/ Trailers	2025-26 Projected Utilization w/ Trailers	2026-27 Projected Utilization w/ Trailers
Baucom ES	Traditional	716	112%	112%
Laurel Park ES	Multi-track Year-round	854	89%	87%
Olive Chapel ES	Multi-track Year-round	856	119%*	121%*
Penny Road ES	Traditional	570	90%	89%
Salem ES	Multi-track Year-round	856	77%	85%

*This school's projected crowding reflects the cumulative impact of multiple assignment adjustments.

*Utilization based on building capacity, updated May 2024

**"After" Projected Utilization assumes all impacted students will transition to the newly assigned school

Office of Student Assignment 49

Response/ Rationale for Recommendation:

- **Overcrowding Concerns:** Olive Chapel Elementary is significantly overcrowded and capped, with new families being assigned to an 'overflow' school because the building is operating above capacity. Additional enrollment is not feasible without compromising the learning environment.
- **Safety Considerations:** While a sidewalk connects the neighborhoods to the current school, the route involves crossing a high-speed road and a major highway. Therefore, these neighborhoods are not located in a “no transportation zone” for Olive Chapel Elementary due to safety concerns along the route to the school.
- **Benefits of Reassignment:** Baucom Elementary school has been fully renovated and now offers more seats to accommodate a larger student population. The reassignment allows for better resource allocation, enhancing the educational experience for all students in this area.
- **Support for Stability:** WCPSS is prepared to honor all stability transfer requests for existing students from these neighborhoods, as this assignment change is from an existing school to another existing school. Allowing these students to stay at Olive Chapel Elementary is an effort to ease the transition.
- **Transition Support:** WCPSS is committed to supporting families through the transition, with resources available to help students and families feel welcomed and connected in their new school community.
- **Distance:** Baucom Elementary is approximately 1.5 to 2 miles farther from these neighborhoods than Olive Chapel Elementary.

Request/ Question:

Families reassigned from Olive Chapel or Salem Elementary (year-round) to Baucom Elementary (traditional) are asking why there isn't a middle school change recommendation to align with a traditional calendar

Community Rationale:

- *Families want K-8 calendar continuity by base assignment to avoid scheduling conflicts between elementary and middle school calendars*

Response/ Rationale for Recommendation:

- **Short Term Solution:** WCPSS acknowledges the calendar mismatch and will allow families impacted by this reassignment to request a traditional calendar assignment to Apex Middle for the 2025-26 school year.
- **Long Term Solution:** A broader middle school realignment will be included in the 2026-27 school enrollment plan. This will address the need for calendar alignment and manage continued crowding and growth in the region. While Parkside Middle School's opening has been delayed, WCPSS will still propose middle school assignment changes for 2026-27 to better serve families in this area.
- **Year-round Continuity:** Families who request a stability transfer to remain at their current year-round elementary school (Olive Chapel or Salem) will still have K-8 calendar alignment, as they will remain base assigned to Lufkin Road or Salem Middle (both are year-round) for the 2025-26 school year.
- **Planned Adjustment:** For consistency, identify Apex Middle as a traditional calendar application option for families in the area recommended to be reassigned from Olive Chapel Elementary to Baucom Elementary. Other impacted areas already have this option.

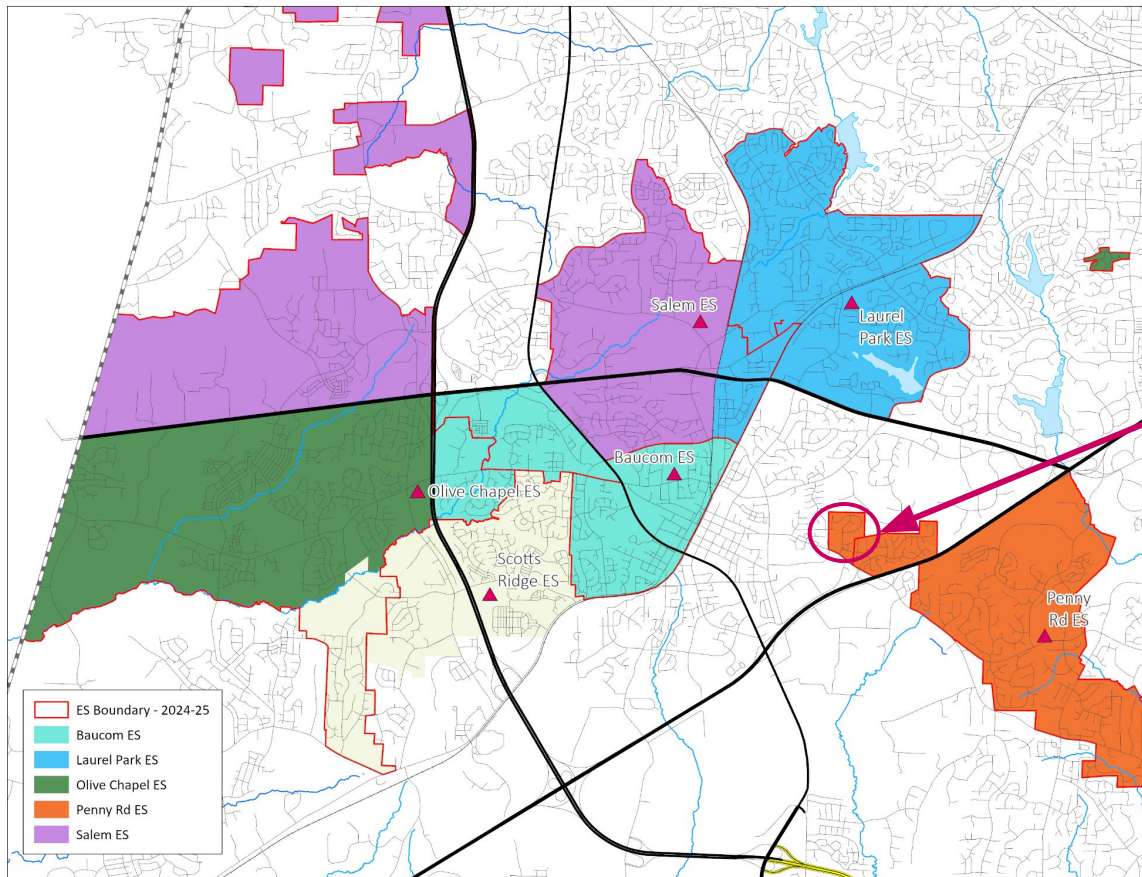
Request/ Question:

Families in the Seagroves Farm subdivision are asking to remain assigned to Baucom Elementary instead of being reassigned to Penny Road Elementary - If staying at Baucom isn't possible, they have asked why they can't be assigned to Apex Elementary instead

Community Rationale:

- *Families value their connection to Baucom Elementary and prefer to remain assigned there for stability and community continuity*
- *If Baucom isn't feasible due to capacity issues, families are requesting Apex Elementary as an alternative assignment*

Review



Seagroves Farm subdivision

New School - Pleasant Plains ES & Existing Schools

Scotts Ridge ES (from Olive Chapel ES)

2025-26 Base School	Calendar	Capacity w/ Trailers	2025-26 Projected Utilization w/ Trailers	2026-27 Projected Utilization w/ Trailers
Apex ES	Traditional	588	96%	99%
Apex Friendship ES	Traditional	716	113%	121%
Olive Chapel ES	Multi-track Year-round	856	119%*	121%*
Scotts Ridge ES	Traditional	736	76%	76%
Pleasant Plains ES	Multi-track Year-round	924	67%	71%

Renovated School - Baucom ES (from Olive Chapel ES & Salem ES) & Existing School - Laurel Park ES (from Salem ES)

2024-25 Base School	Calendar	Capacity w/ Trailers	2025-26 Projected Utilization w/ Trailers	2026-27 Projected Utilization w/ Trailers
Baucom ES	Traditional	716	91%	91%
Laurel Park ES	Multi-track Year-round	854	79%	77%
Olive Chapel ES	Multi-track Year-round	856	144%	147%
Penny Road ES	Traditional	570	85%	84%
Salem ES	Multi-track Year-round	856	99%	108%

2025-26 Base School	Calendar	Capacity w/ Trailers	2025-26 Projected Utilization w/ Trailers	2026-27 Projected Utilization w/ Trailers
Baucom ES	Traditional	716	112%	112%
Laurel Park ES	Multi-track Year-round	854	89%	87%
Olive Chapel ES	Multi-track Year-round	856	119%*	121%*
Penny Road ES	Traditional	570	90%	89%
Salem ES	Multi-track Year-round	856	77%	85%

*This school's projected crowding reflects the cumulative impact of multiple assignment adjustments.

*Utilization based on building capacity, updated May 2024

**"After" Projected Utilization assumes all impacted students will transition to the newly assigned school

Response/ Rationale for Recommendation:

- **Current and Projected Enrollment at Baucom:** Baucom Elementary will be at its capacity limits with the recommendations already included in the plan to take advantage of the newly available capacity at their renovated school.
- **Why Not Apex Elementary?** While families have suggested Apex Elementary as an alternative, it is also at capacity. Apex recently had its enrollment cap removed, but projected development within its current base area will continue to increase enrollment over the next several years, making it unsustainable to add additional students at this time.
- **Reassignment to Penny Road:** The proposed reassignment to Penny Road Elementary is necessary to balance enrollments across schools and avoid overcrowding at both Baucom and Apex, ensuring that students have access to the resources and space they need.
- **Support for Stability:** WCPSS is prepared to honor all stability transfer requests for existing students from these neighborhoods, as this assignment change is from an existing school to another existing school. Allowing these students to stay at Baucom Elementary is an effort to ease the transition.
- **Operational Efficiency:** WCPSS recognizes the importance of school stability and community ties, but effective capacity management is essential to meeting the needs of all students in the region.

Request/ Question:

Families in Bella Casa are concerned about being split across three different elementary schools with the opening of Pleasant Plains Elementary - They're also asking why the newer Depot 499 subdivision wasn't recommended to shift to Pleasant Plains

Community Rationale:

- *Bella Casa is currently split between three elementary schools—Apex Friendship, Olive Chapel, and Scotts Ridge—and families want fewer school assignments to maintain neighborhood cohesion*
- *Depot 499 subdivision is geographically closest to Pleasant Plains, so families are asking why it wasn't initially assigned there*

New School - Pleasant Plains ES (opening July 2025)

Calendar Recommendation

- Multi-track Year-round, Capacity = 924

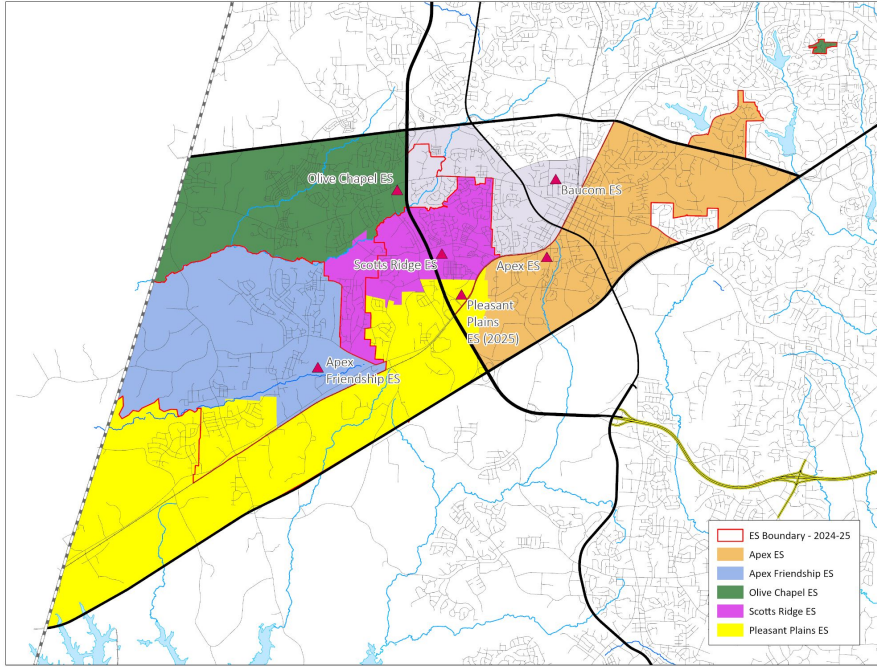
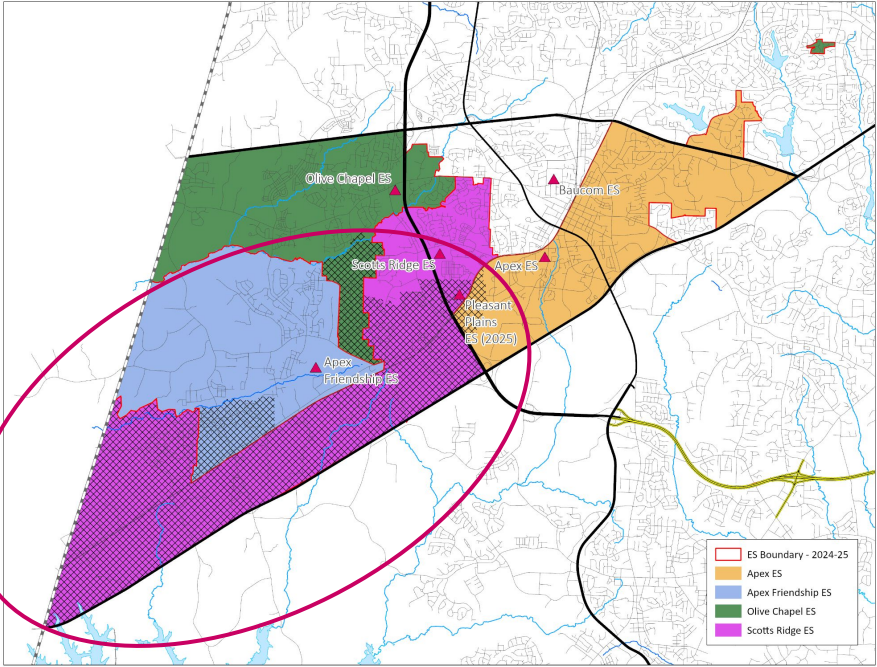
Impacted Schools

- Apex ES, Apex Friendship ES & Scotts Ridge ES (& Olive Chapel ES)

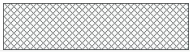
2024-25 Base School	Calendar	Capacity w/ Trailers	2025-26 Projected Utilization w/ Trailers	2026-27 Projected Utilization w/ Trailers
Apex ES	Traditional	588	96%	99%
Apex Friendship ES	Traditional	716	138%	147%
(Olive Chapel ES)	Multi-track Year-round	856	144%	147%
Scotts Ridge ES	Traditional	736	116%	118%

New School - Pleasant Plains ES & Existing Schools

Review



Impacted Areas:

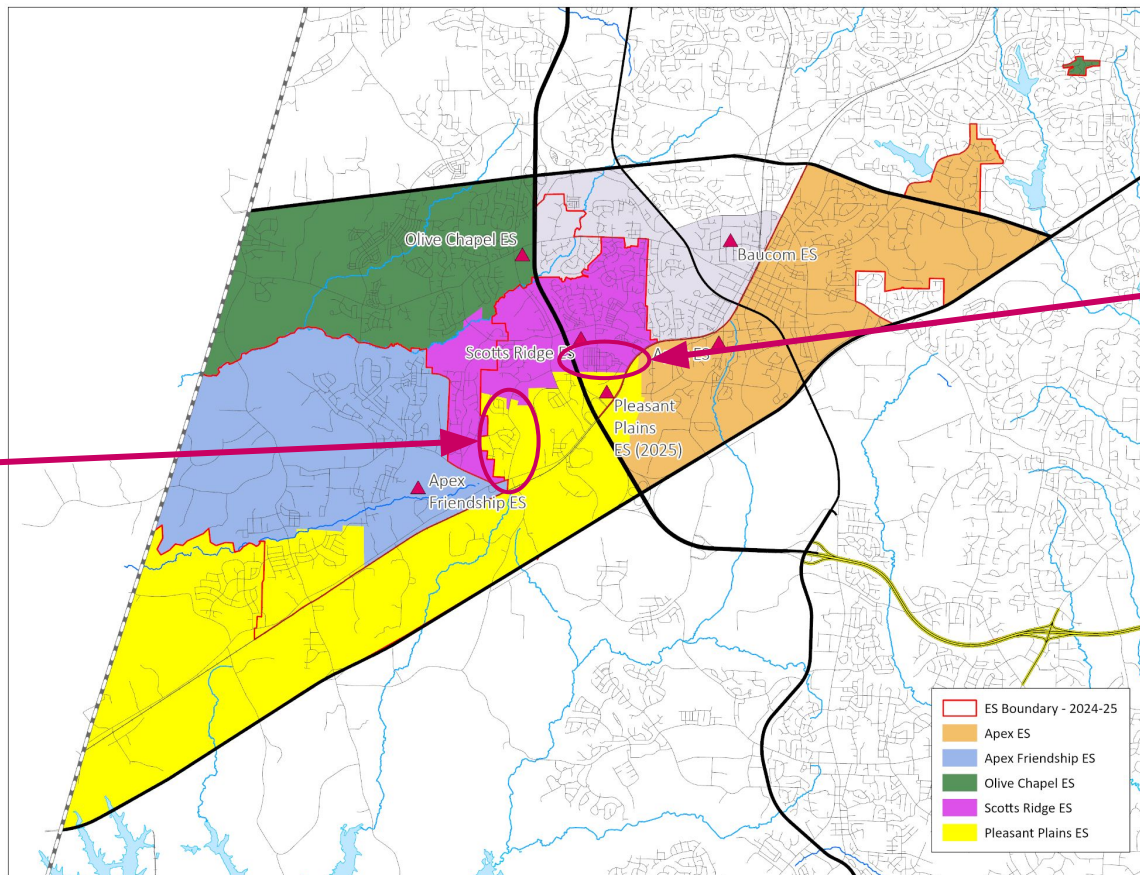


Proposed Base Areas

Review

Depot 499
subdivision

Bella Casa -
Siena & Verona,
& Holland Farms
subdivisions



New School - Pleasant Plains ES & Existing Schools

Scotts Ridge ES (from Olive Chapel ES)

2025-26 Base School	Calendar	Capacity w/ Trailers	2025-26 Projected Utilization w/ Trailers	2026-27 Projected Utilization w/ Trailers
Apex ES	Traditional	588	96%	99%
Apex Friendship ES	Traditional	716	113%	121%
Olive Chapel ES	Multi-track Year-round	856	119%*	121%*
Scotts Ridge ES	Traditional	736	76%	76%
Pleasant Plains ES	Multi-track Year-round	924	67%	71%

Response/ Rationale for Recommendation:

- **Initial Plan:** The initial draft, unintentionally, maintained three school assignments for Bella Casa by keeping part of the neighborhood at Apex Friendship Elementary, shifting some families from Olive Chapel Elementary to Scotts Ridge Elementary, and moving another portion from Scotts Ridge Elementary to Pleasant Plains Elementary.
- **Capacity Assessment:** Adjusting the recommendations to assign Depot 499 to Pleasant Plains, while allowing Holland Farms and the portion of Bella Casa that were initially planned to shift from Scotts Ridge to Pleasant Plains to remain at Scotts Ridge is sustainable long-term based on current projections.
- **Potential Outcome:** If the requested adjustments are made, Bella Casa will have two elementary school assignments—Apex Friendship and Scotts Ridge—ensuring the neighborhood is divided into only two separate elementary schools. In addition, the newer development of Depot 499 will have a stable school assignment at Pleasant Plains, and Holland Farms will remain at Scotts Ridge for the foreseeable future.
- **Planned Adjustment:** Adjust the recommendations to assign Depot 499 to Pleasant Plains. Additionally, the portion of Bella Casa and Holland Farms that were initially planned to shift from Scotts Ridge to Pleasant Plains will now remain at Scotts Ridge.

Request/ Question:

Families in the Jordan Pointe subdivision want to remain assigned to Scotts Ridge Elementary (traditional calendar), rather than being reassigned to the new Pleasant Plains Elementary (year-round calendar)

Community Rationale:

- *Preference for traditional calendar to align with family schedules and other siblings*
- *Families value the community connections they have established at the current school*

New School - Pleasant Plains ES (opening July 2025)

Calendar Recommendation

- Multi-track Year-round, Capacity = 924

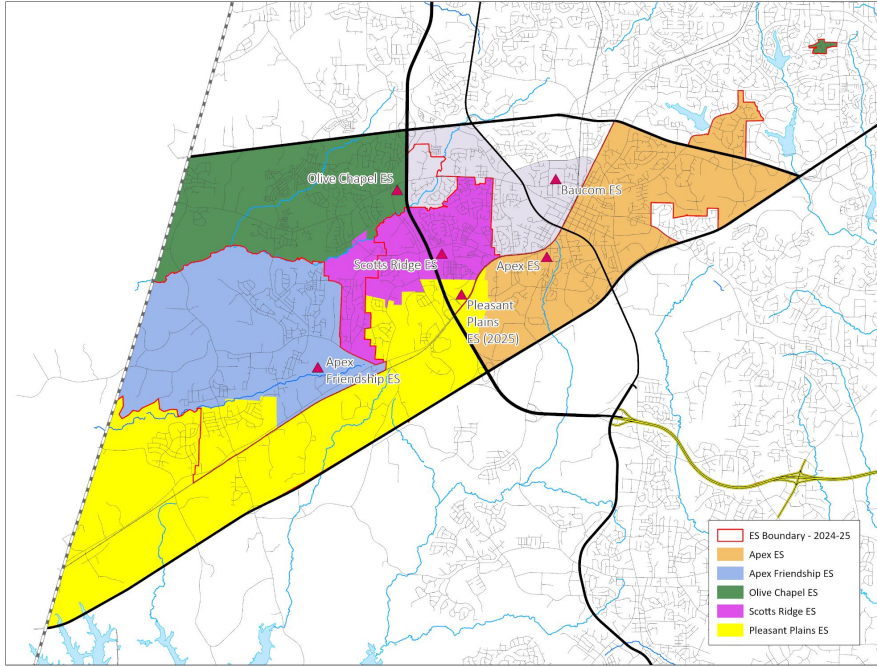
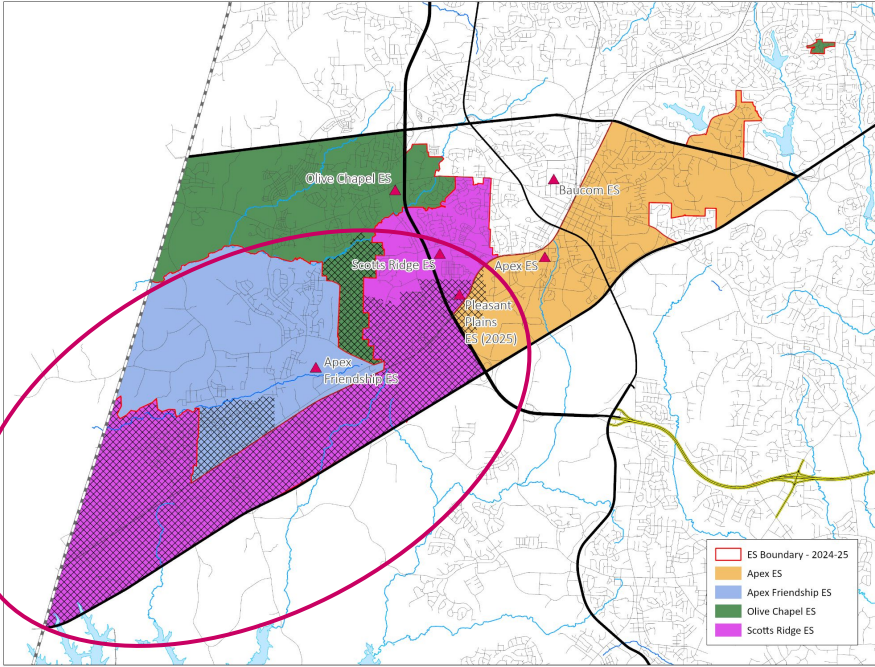
Impacted Schools

- Apex ES, Apex Friendship ES & Scotts Ridge ES (& Olive Chapel ES)

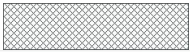
2024-25 Base School	Calendar	Capacity w/ Trailers	2025-26 Projected Utilization w/ Trailers	2026-27 Projected Utilization w/ Trailers
Apex ES	Traditional	588	96%	99%
Apex Friendship ES	Traditional	716	138%	147%
(Olive Chapel ES)	Multi-track Year-round	856	144%	147%
Scotts Ridge ES	Traditional	736	116%	118%

New School - Pleasant Plains ES & Existing Schools

Review

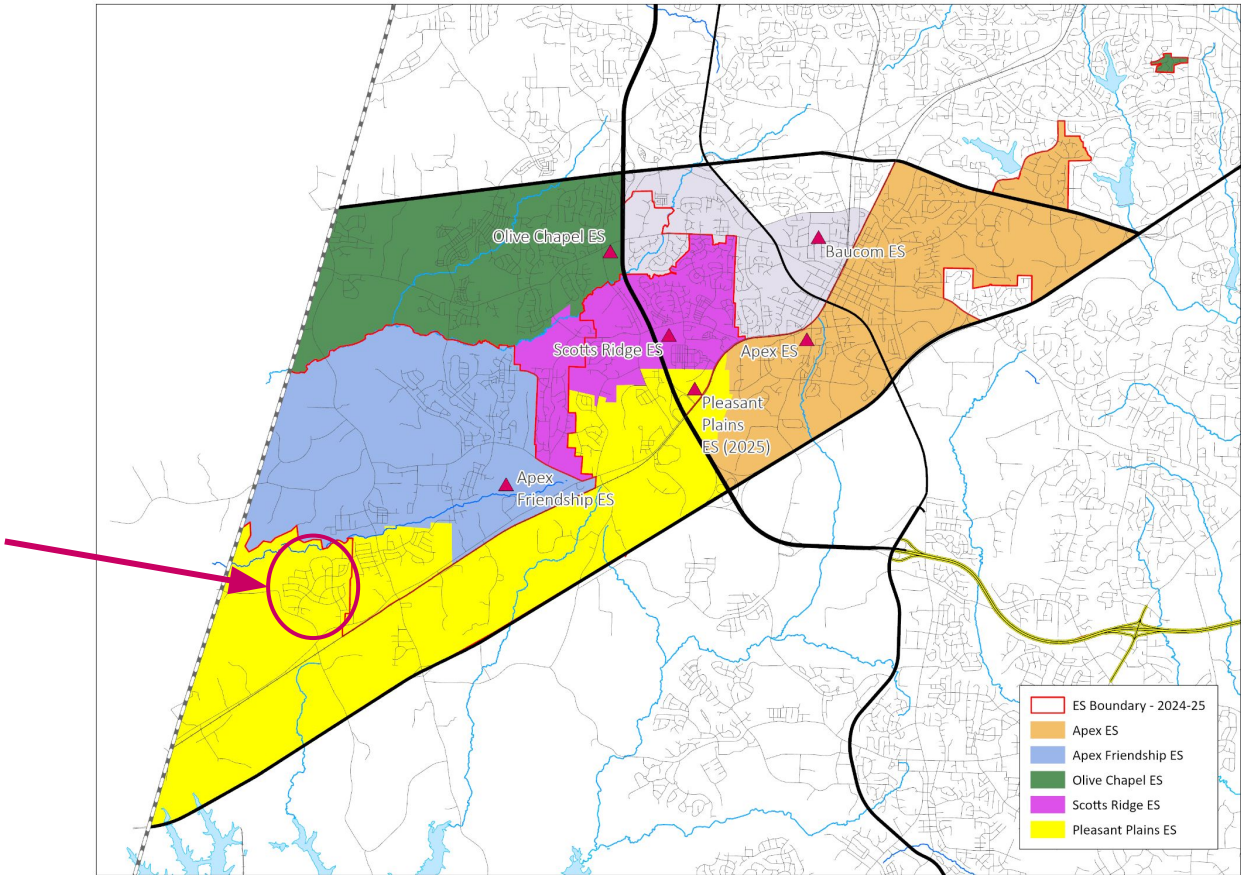


Impacted Areas:



Proposed Base Areas

Jordan Pointe
subdivision



New School - Pleasant Plains ES & Existing Schools

Scotts Ridge ES (from Olive Chapel ES)

2025-26 Base School	Calendar	Capacity w/ Trailers	2025-26 Projected Utilization w/ Trailers	2026-27 Projected Utilization w/ Trailers
Apex ES	Traditional	588	96%	99%
Apex Friendship ES	Traditional	716	113%	121%
Olive Chapel ES	Multi-track Year-round	856	119%*	121%*
Scotts Ridge ES	Traditional	736	76%	76%
Pleasant Plains ES	Multi-track Year-round	924	67%	71%

Response/ Rationale for Recommendation:

- **Overcrowding Concerns:** Scotts Ridge Elementary is overcrowded and capped, with new families being assigned to an 'overflow' school because the building is operating above capacity. Additional enrollment is not feasible without compromising the learning environment.
- **Capacity at New School:** The new school, operating on a year-round calendar, provides the needed capacity to relieve overcrowding and absorb continued growth in the area.
- **Family Calendar Preferences:** While we understand the preference for traditional calendars, the year-round option offers additional capacity to address enrollment growth in the region and allows for greater stability of school assignment overtime.
- **Support for Stability:** WCPSS is prepared to honor stability transfer requests for existing students in this neighborhood that are rising into 4th or 5th grade, along with any younger siblings (including rising Kindergarteners), to remain at Scotts Ridge Elementary. We understand the challenges posed by not providing transportation for these transfers; however, due to ongoing bus driver shortages, we are unable to offer transportation for transfer students at this time.
- **Transition Support:** WCPSS is committed to supporting families through the transition, with resources available to help students and families feel welcomed and connected in their new school community.
- **Distance:** Pleasant Plains Elementary is approximately 0.5 miles closer to these neighborhoods than Scotts Ridge Elementary.

Request/ Question:

Families in the Belterra and Woodbury subdivisions want to remain assigned to Apex Friendship Elementary (traditional calendar), rather than being reassigned to the new Pleasant Plains Elementary (year-round calendar)

Community Rationale:

- *Current school is closer and operates on a traditional calendar*
- *Families prefer a shorter commute and traditional schedule for consistency with family routines*
- *Families value the community connections they have established at the current school*

New School - Pleasant Plains ES (opening July 2025)

Calendar Recommendation

- Multi-track Year-round, Capacity = 924

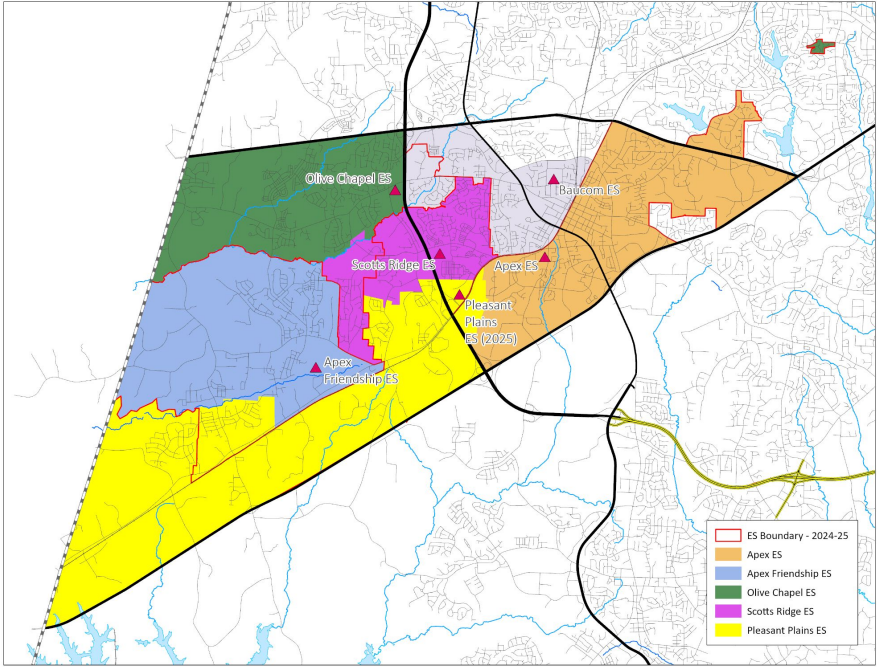
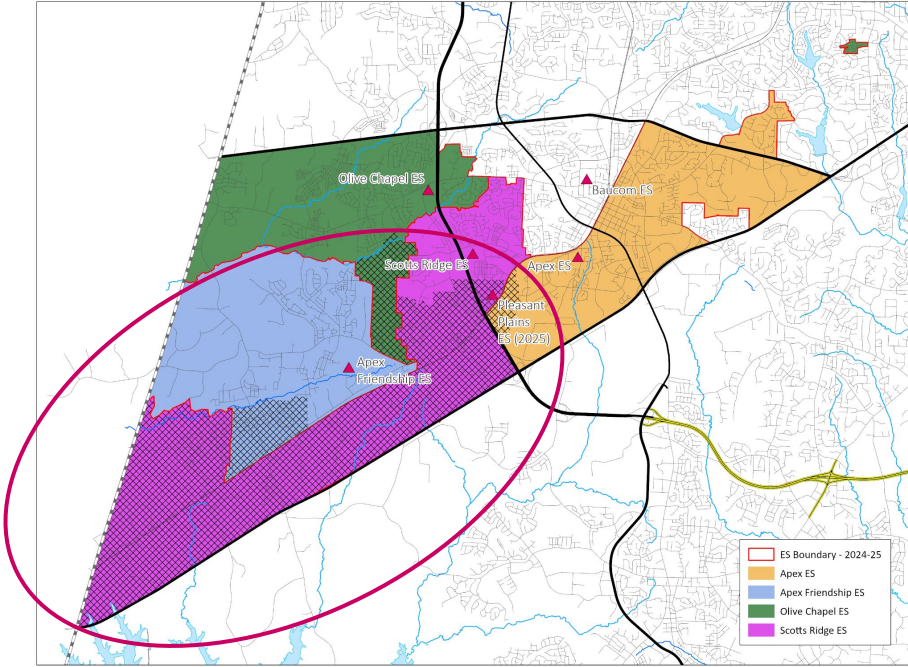
Impacted Schools

- Apex ES, Apex Friendship ES & Scotts Ridge ES (& Olive Chapel ES)

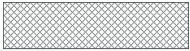
2024-25 Base School	Calendar	Capacity w/ Trailers	2025-26 Projected Utilization w/ Trailers	2026-27 Projected Utilization w/ Trailers
Apex ES	Traditional	588	96%	99%
Apex Friendship ES	Traditional	716	138%	147%
(Olive Chapel ES)	Multi-track Year-round	856	144%	147%
Scotts Ridge ES	Traditional	736	116%	118%

New School - Pleasant Plains ES & Existing Schools

Review

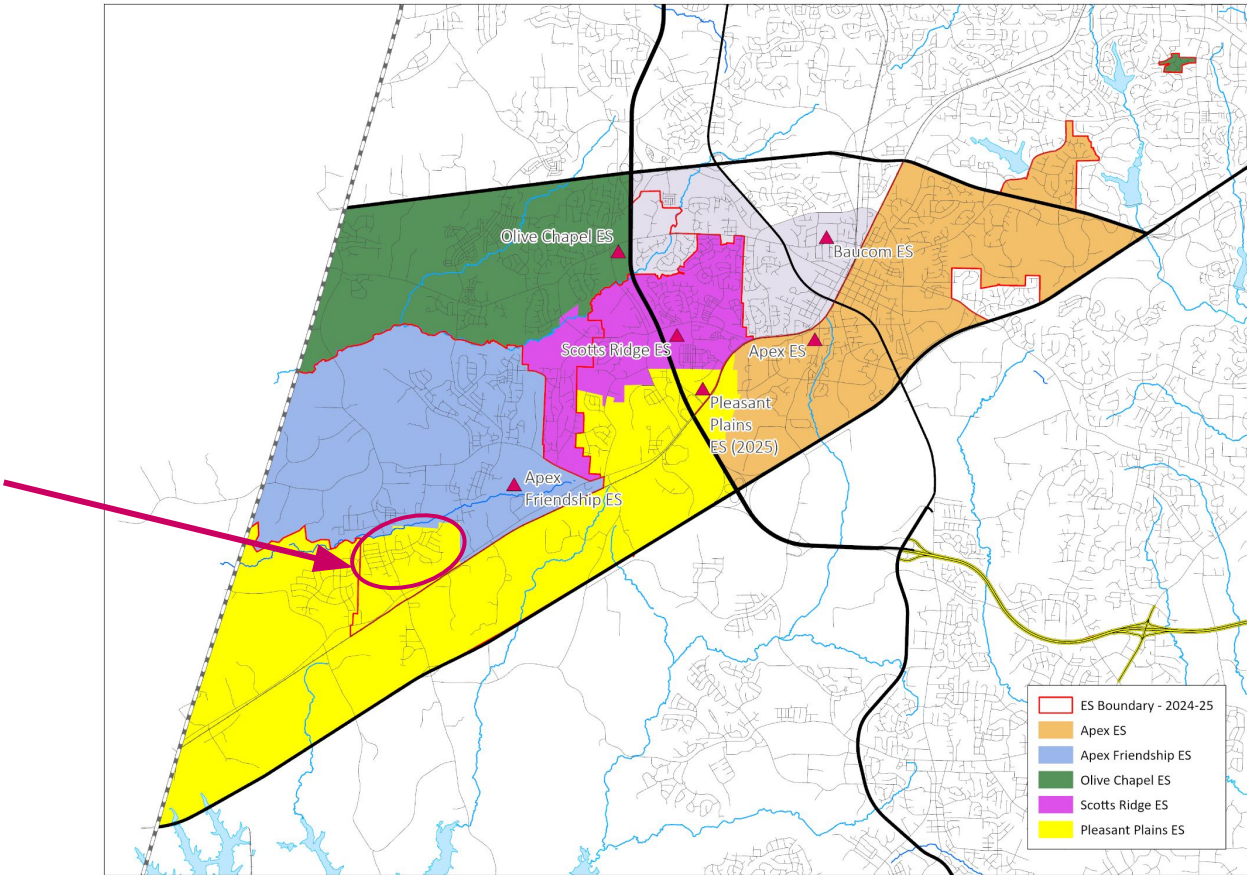


Impacted Areas:



Proposed Base Areas

Belterra &
Woodbury
subdivisions



New School - Pleasant Plains ES & Existing Schools

Scotts Ridge ES (from Olive Chapel ES)

2025-26 Base School	Calendar	Capacity w/ Trailers	2025-26 Projected Utilization w/ Trailers	2026-27 Projected Utilization w/ Trailers
Apex ES	Traditional	588	96%	99%
Apex Friendship ES	Traditional	716	113%	121%
Olive Chapel ES	Multi-track Year-round	856	119%*	121%*
Scotts Ridge ES	Traditional	736	76%	76%
Pleasant Plains ES	Multi-track Year-round	924	67%	71%

Response/ Rationale for Recommendation:

- **Overcrowding Concerns:** Apex Friendship Elementary is capped due to severe overcrowding, and new families are being assigned to an 'overflow' school because the building is operating above capacity. Additional enrollment is not feasible without compromising the learning environment.
- **Capacity at New School:** The new school, operating on a year-round calendar, provides the needed capacity to relieve overcrowding and absorb continued growth in the area.
- **Family Calendar Preferences:** While we understand the preference for traditional calendars, the year-round option offers additional capacity to address enrollment growth in the region and allows for greater stability of school assignment overtime.
- **Support for Stability:** WCPSS is prepared to honor stability transfer requests for existing students in this neighborhood that are rising into 4th or 5th grade, along with any younger siblings (including rising Kindergarteners), to remain at Apex Friendship Elementary. We understand the challenges posed by not providing transportation for these transfers; however, due to ongoing bus driver shortages, we are unable to offer transportation for transfer students at this time.
- **Transition Support:** WCPSS is committed to supporting families through the transition, with resources available to help students and families feel welcomed and connected in their new school community.
- **Distance:** Pleasant Plains Elementary is approximately 2 miles farther from these neighborhoods than Apex Friendship Elementary. In addition, these neighborhoods are not located in a “no transportation zone” for Apex Friendship Elementary as they are more than 1.5 miles from the school.

Request/ Question:

Families in the Stonemont subdivision prefer to remain assigned to Holly Grove Elementary, rather than being reassigned to the new Rex Road Elementary

Community Rationale:

- *Current school is slightly closer*
- *Families value the community connections they have established at the current school*

New School - Rex Road ES (opening July 2025)

Calendar Recommendation

- Multi-track Year-round, Capacity = 924

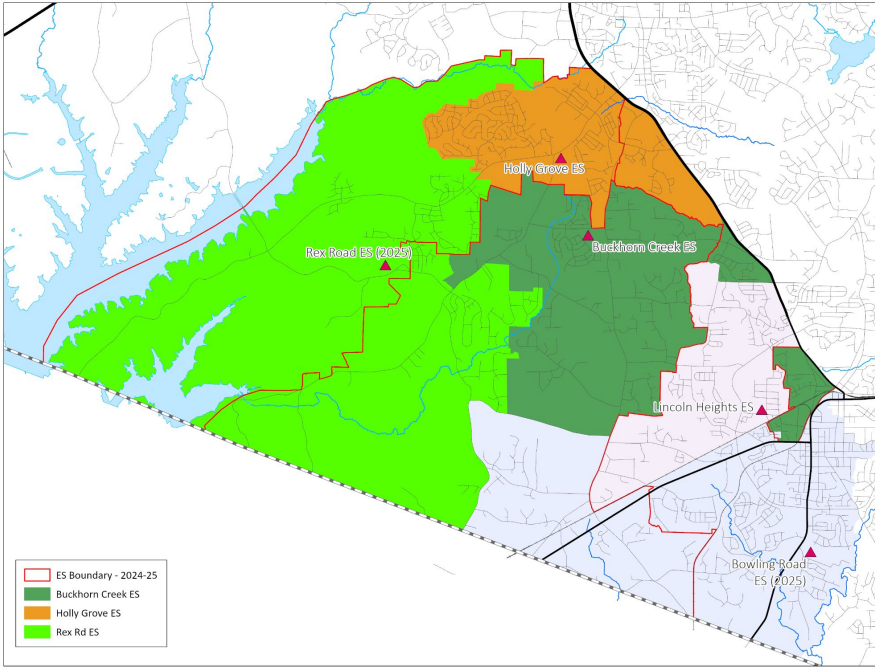
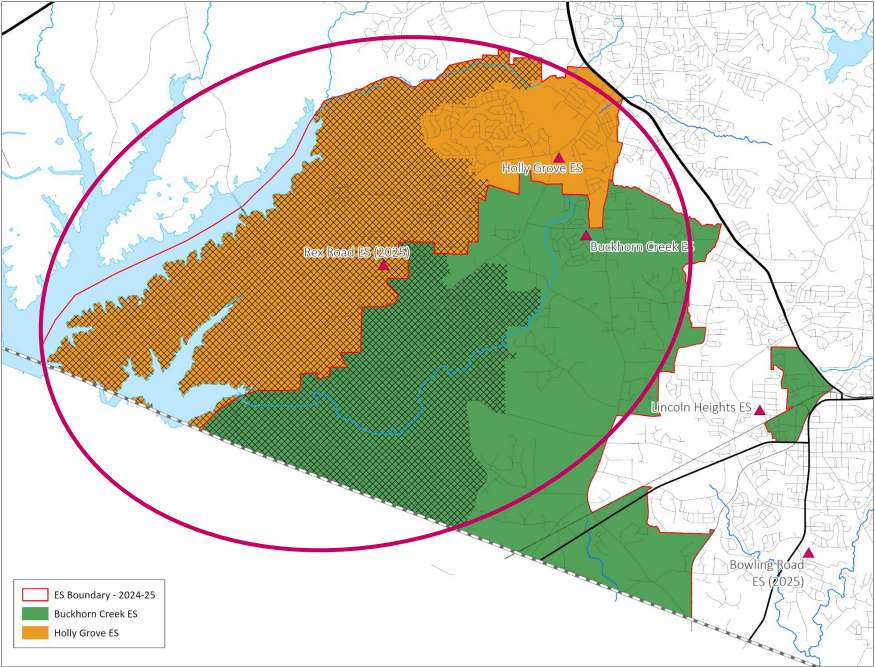
Impacted Schools

- Buckhorn Creek ES & Holly Grove ES

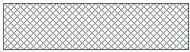
2024-25 Base School	Calendar	Capacity w/ Trailers	2025-26 Projected Utilization w/ Trailers	2026-27 Projected Utilization w/ Trailers
Buckhorn Creek ES	Traditional	696	126%	128%
Holly Grove ES	Multi-track Year-round	874	102%	100%

New School - Rex Road ES

Review

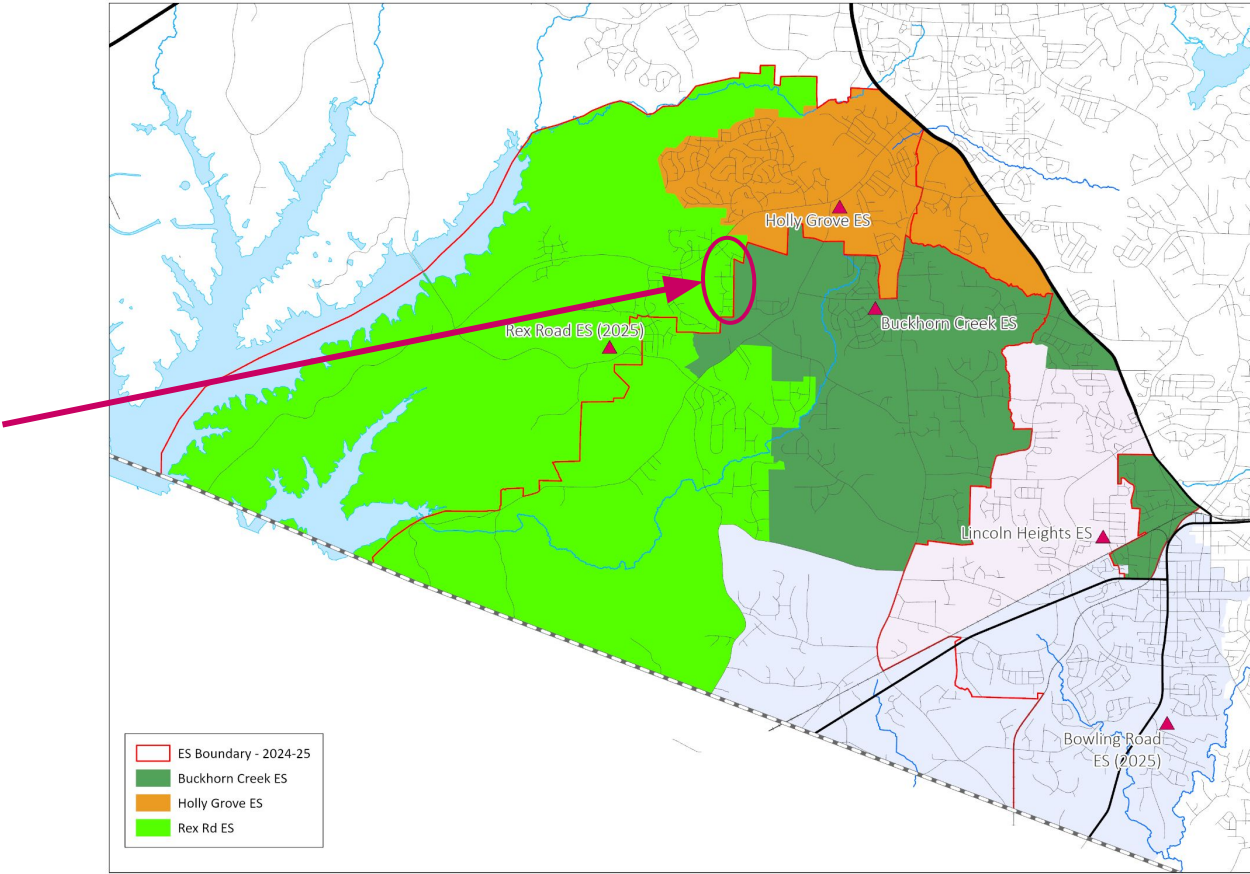


Impacted Areas:



Proposed Base Areas

Stonemont
subdivision



New School - Rex Road ES & Existing Schools

Buckhorn Creek ES, Herbert Akins Road ES, Holly Grove ES & Holly Ridge ES (from Herbert Akins Road ES, Holly Ridge ES, Holly Springs ES & Lincoln Heights Magnet ES)

2025-26 Base School	Calendar	Capacity w/ Trailers	2025-26 Projected Utilization w/ Trailers	2026-27 Projected Utilization w/ Trailers
Buckhorn Creek ES	Traditional	696	89%*	90%*
Herbert Akins Road ES	Multi-track Year-round	916	94%*	95%*
Holly Grove ES	Multi-track Year-round	874	83%	81%
Holly Ridge ES	Traditional	648	100%	97%
Holly Springs ES	Multi-track Year-round	896	78%	77%
Lincoln Heights Magnet ES	Traditional	508	88%*	90%*
Rex Road ES	Multi-track Year-round	924	51%	52%

Response/ Rationale for Recommendation:

- **Overcrowding Concerns:** Holly Grove Elementary is capped due to overcrowding, and new families are being assigned to an 'overflow' school because the building is operating above capacity. Additional enrollment is not feasible without compromising the learning environment.
- **Capacity at New School:** The new school, operating on a year-round calendar, provides the needed capacity to relieve overcrowding and absorb continued growth in the area.
- **Proximity Considerations:** While the new school is slightly farther away (by ~0.5 miles), the benefits of reduced overcrowding outweigh the minimal difference in travel distance.
- **Support for Stability:** WCPSS is prepared to honor stability transfer requests for existing students in this neighborhood that are rising into 4th or 5th grade, along with any younger siblings (including rising Kindergarteners), to remain at Holly Grove Elementary. We understand the challenges posed by not providing transportation for these transfers; however, due to ongoing bus driver shortages, we are unable to offer transportation for transfer students at this time.
- **Transition Support:** WCPSS is committed to supporting families through the transition, with resources available to help students and families feel welcomed and connected in their new school community.
- **Distance:** Rex Road Elementary is approximately 0.5 miles farther from this neighborhood than Holly Grove Elementary.

Request/ Question:

Families in the Addison Pond, Trinity Creek and Twelve Oaks subdivisions, prefer to remain assigned to Apex Friendship High, rather than being reassigned to the new Felton Grove High

Community Rationale:

- *Concerns about highway crossings and potential risks for teen drivers*
- *Concerns about congested traffic patterns along the travel route to the new school*
- *Families value the community connections they have established at the current school*

New School - Felton Grove HS (opening August 2025)

Calendar Recommendation

- Traditional, Capacity = 2200

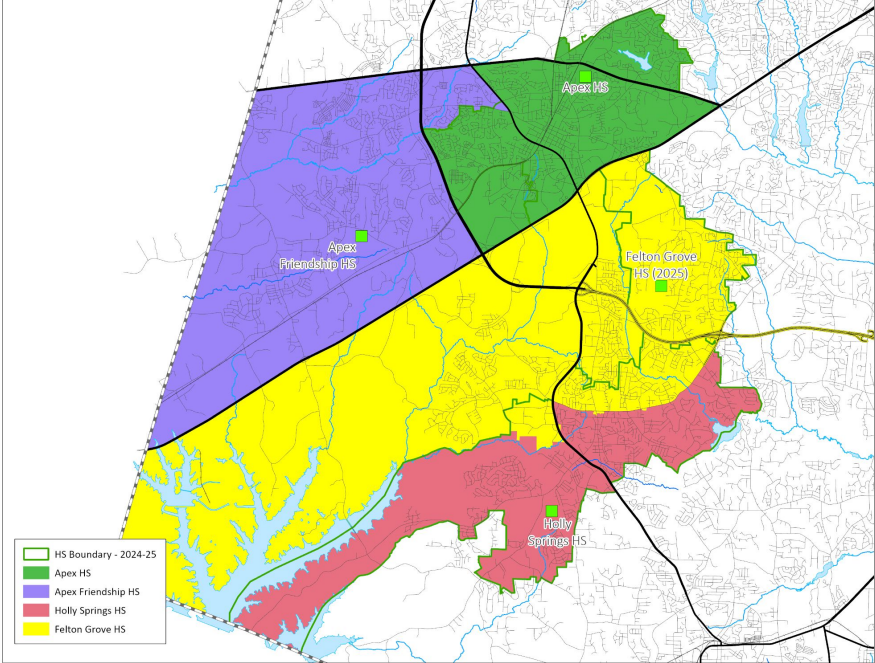
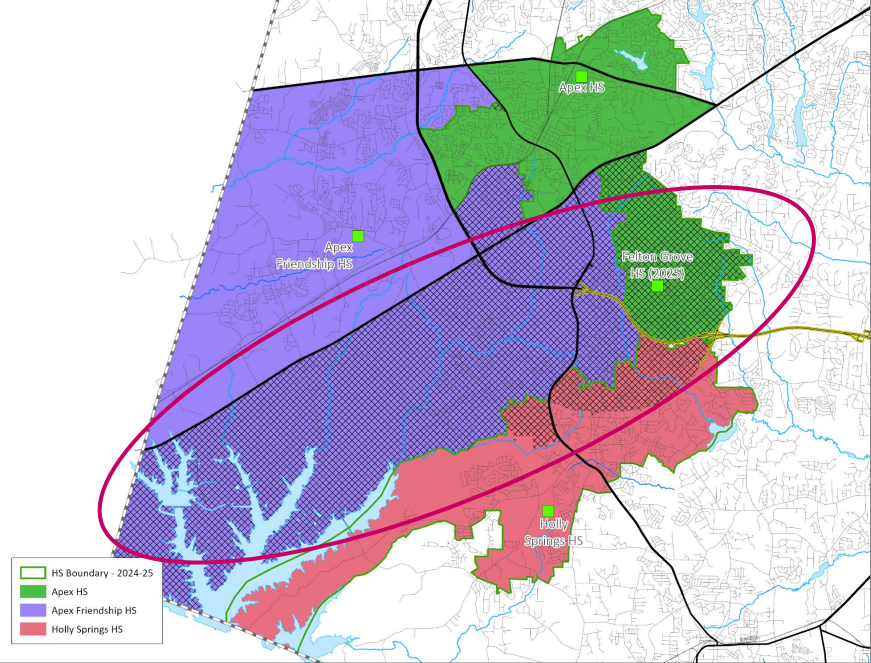
Impacted Schools

- Apex HS, Apex Friendship HS & Holly Springs HS

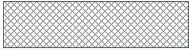
2024-25 Base School	Calendar	Capacity w/ Trailers	2025-26 Projected Utilization w/ Trailers	2026-27 Projected Utilization w/ Trailers
Apex HS	Traditional	2240	108%	102%
Apex Friendship HS	Traditional	2384	119%	126%
Holly Springs HS	Traditional	1992	102%	105%

New School - Felton Grove HS

Review

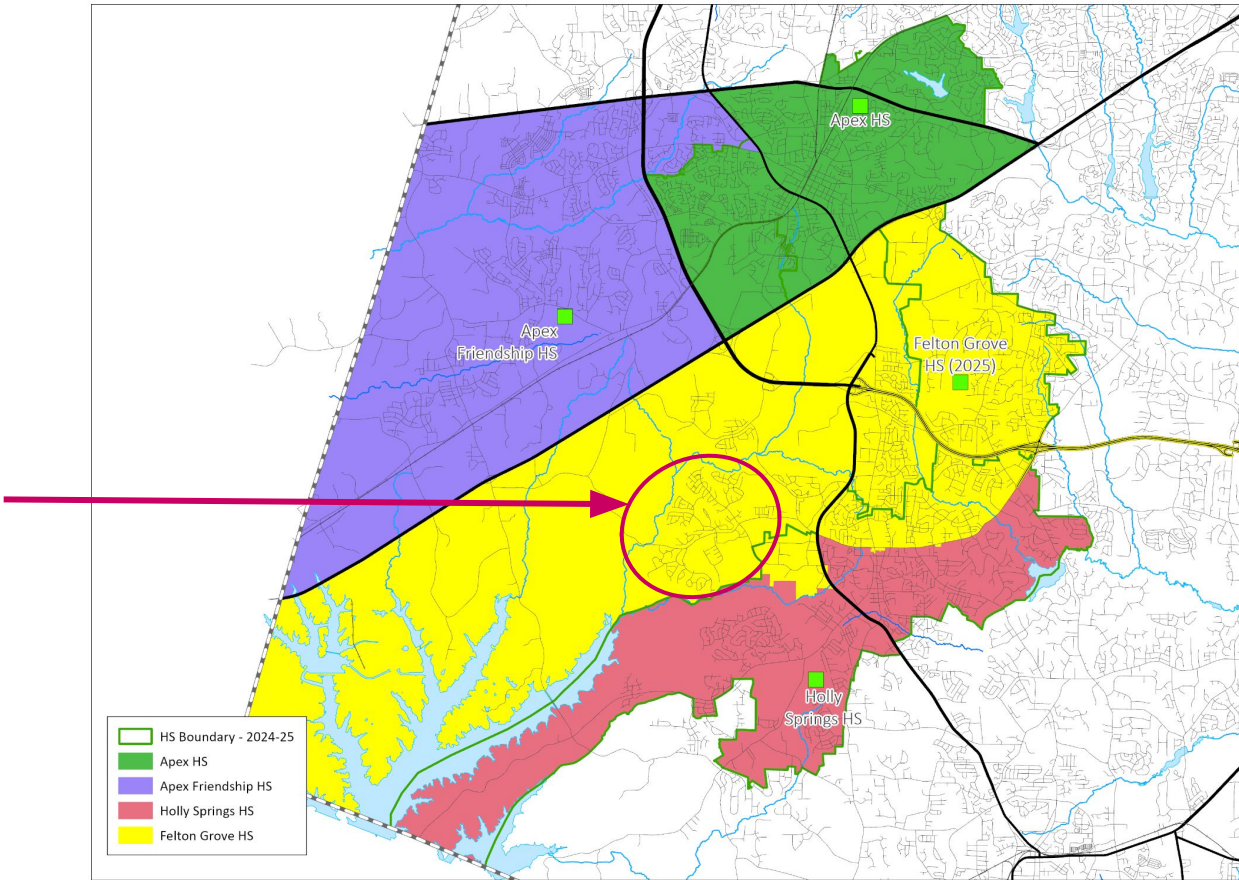


Impacted Areas:



Proposed Base Areas

Addison Pond,
Trinity Creek &
Twelve Oaks
subdivisions



New School - Felton Grove HS & Existing School

Apex HS (from Apex Friendship HS)

2025-26 Base School	Calendar	Capacity w/ Trailers ²	2025-26 Projected Utilization w/ Trailer ¹	2026-27 Projected Utilization w/ Trailers ¹
Apex HS	Traditional	2240	110%	97%*
Apex Friendship HS	Traditional	2384	91%	88%
Holly Springs HS	Traditional	1992	91%	88%
Felton Grove HS	Traditional	2240	41%	63%

¹ The projected capacity for Felton Grove HS reflects full 9th-12th grade enrollment, which will NOT be reached in the first year when only 9th and 10th grades are enrolled. The table shows the expected utilization based on the enrollment of 9th and 10th grade students ONLY at Felton Grove HS for the 2025-26 school year, with the student cohort advancing each year (9th-11th in 2026-27).

Response/ Rationale for Recommendation:

- **Overcrowding Concerns:** Apex Friendship High is capped due to severe overcrowding, and new families are being assigned to an 'overflow' school because the building is operating above capacity. A feeder pattern cap list is also in place based on the size of the current cohorts that feed into the school. No other area high school is facing this level of crowding.
- **Purpose of Felton Grove:** The new high school was built to relieve overcrowding at Apex Friendship High, along with crowding concerns at Apex High.
- **Distance Comparison:** The travel distance to Felton Grove High is comparable to Apex Friendship, ranging from 7.4 to 11.8 miles, depending on the route, versus 7.2 to 9.1 miles for Apex Friendship. The difference is minimal, and both routes require careful consideration of road safety for teen drivers.
- **Avoiding Disruption for Other Students:** To minimize disruptions, the district worked to avoid a domino effect in reassignments, reducing the number of students impacted by high school changes across this region.
- **Support for Stability:** WCPSS will honor stability transfer requests for rising 9th and 10th grade students who have **siblings** in 11th or 12th grade that will remain at Apex Friendship High. This ensures that siblings can stay together, as the new Felton Grove High will only serve 9th and 10th grades when it opens.
- **Transition Support:** WCPSS is committed to supporting families through the transition, with resources available to help students and families feel welcomed and connected in their new school community.

Request/ Question:

Families in the Sunset Ridge subdivisions are asking why Sunset Ridge North has been recommended for assignment to the new Felton Grove High, while Sunset Ridge South remains assigned to Holly Springs High, even though both are fairly close to Felton Grove

Community Rationale:

- *Sunset Ridge is a geographically large area, and families in both North and South portions want consistency in their high school assignments*
- *Families in Sunset Ridge South feel that, because of their proximity to Felton Grove High, they should also be reassigned to the new school*

New School - Felton Grove HS (opening August 2025)

Calendar Recommendation

- Traditional, Capacity = 2200

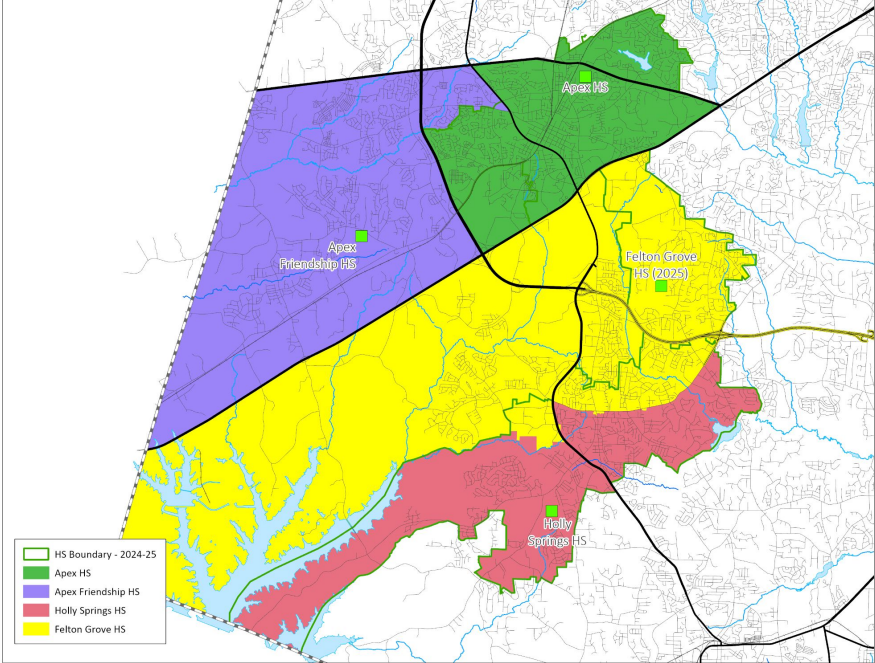
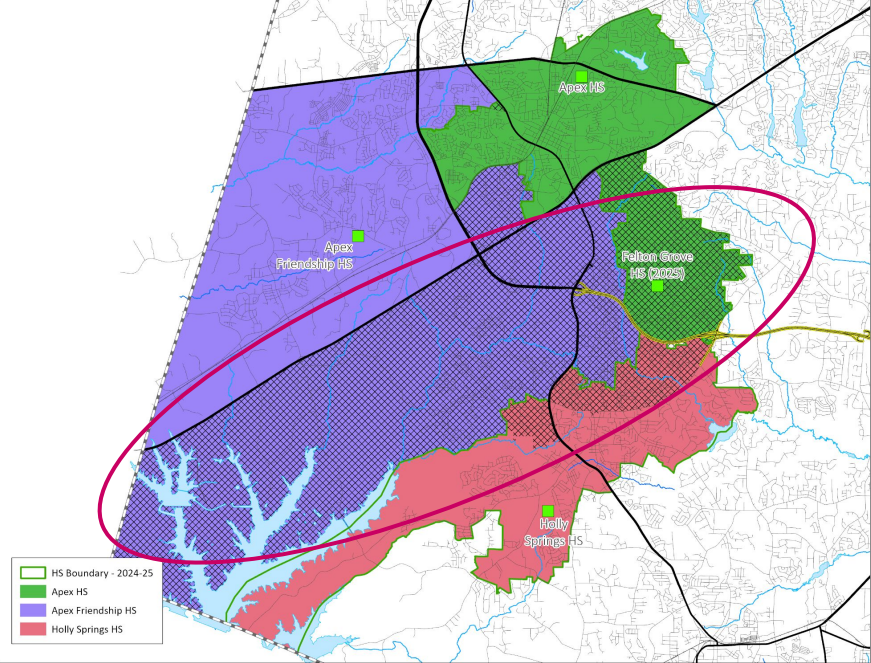
Impacted Schools

- Apex HS, Apex Friendship HS & Holly Springs HS

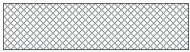
2024-25 Base School	Calendar	Capacity w/ Trailers	2025-26 Projected Utilization w/ Trailers	2026-27 Projected Utilization w/ Trailers
Apex HS	Traditional	2240	108%	102%
Apex Friendship HS	Traditional	2384	119%	126%
Holly Springs HS	Traditional	1992	102%	105%

New School - Felton Grove HS

Review

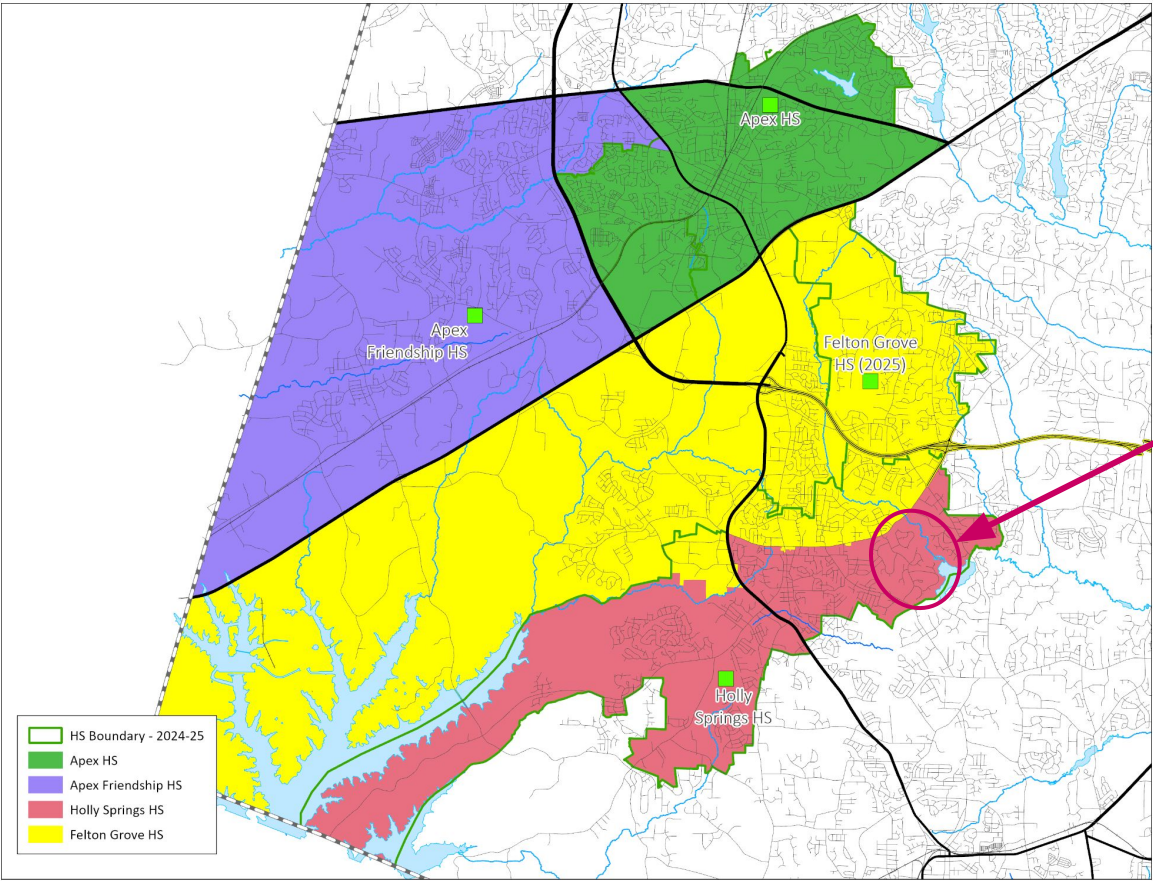


Impacted Areas:



Proposed Base Areas

Review



Sunset Ridge
South
subdivision

New School - Felton Grove HS & Existing School

Apex HS (from Apex Friendship HS)

2025-26 Base School	Calendar	Capacity w/ Trailers ²	2025-26 Projected Utilization w/ Trailer ¹	2026-27 Projected Utilization w/ Trailers ¹
Apex HS	Traditional	2240	110%	97%*
Apex Friendship HS	Traditional	2384	91%	88%
Holly Springs HS	Traditional	1992	91%	88%
Felton Grove HS	Traditional	2240	41%	63%

¹ The projected capacity for Felton Grove HS reflects full 9th-12th grade enrollment, which will NOT be reached in the first year when only 9th and 10th grades are enrolled. The table shows the expected utilization based on the enrollment of 9th and 10th grade students ONLY at Felton Grove HS for the 2025-26 school year, with the student cohort advancing each year (9th-11th in 2026-27).

Response/ Rationale for Recommendation:

- **Primary Objective:** The main goal of this recommendation was to relieve crowding at Apex Friendship and Apex High. Assigning Sunset Ridge South to Felton Grove High would not contribute to relieving the overcrowding at either Apex Friendship or Apex High.
- **Impact on Enrollment:** Adding Sunset Ridge South to Felton Grove High would negatively impact enrollment at Holly Springs High and could quickly lead to overcrowding at Felton Grove High.
- **Stability of Assignment:** To minimize disruptions, the district worked to maintain stable school assignments for as many students as possible. Specifically, the goal was to avoid a domino effect in reassignments, reducing the number of students impacted by high school changes across this region.
- **Future Monitoring:** While this area will remain assigned to Holly Springs High, WCPSS will continue to monitor enrollment growth in the region and may reconsider the assignment in the future if conditions change.

Request/ Question:

Families assigned to the new Bowling Road Elementary prefer a traditional calendar instead of the planned year-round calendar

Community Rationale:

- *Fuquay-Varina Middle, located on the same campus, operates on a traditional calendar, creating a challenge for families with children at both schools*

New School - Bowling Road ES (opening July 2025)

Calendar Recommendation

- Multi-track Year-round, Capacity = 924

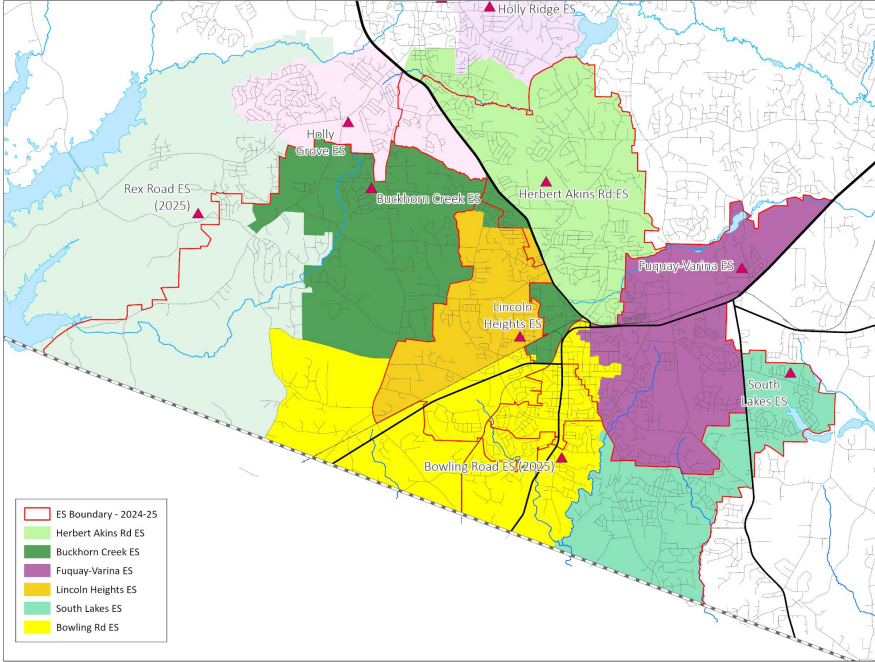
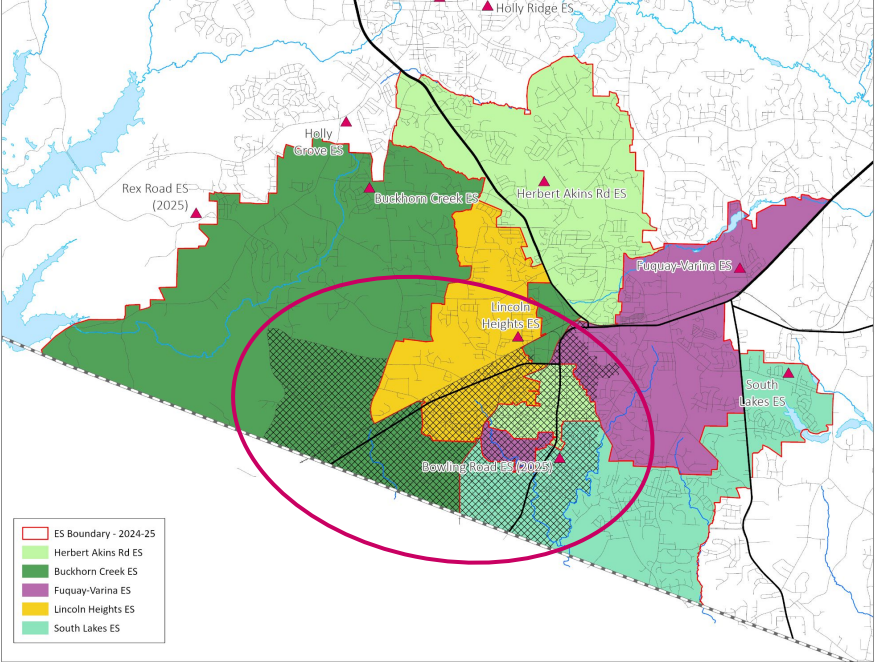
Impacted Schools

- Buckhorn Creek ES, Fuquay-Varina ES, Herbert Akins Road ES, Lincoln Heights Magnet ES & South Lakes ES

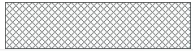
2024-25 Base School	Calendar	Capacity w/ Trailers	2025-26 Projected Utilization w/ Trailers	2026-27 Projected Utilization w/ Trailers
Buckhorn Creek ES	Traditional	696	126%	128%
Fuquay-Varina ES	Traditional	716	98%	98%
Herbert Akins Road ES	Multi-track Year-round	916	106%	106%
Lincoln Heights Magnet ES	Traditional	508	125%	126%
South Lakes ES	Traditional	716	103%	100%

New School - Bowling Road ES & Existing Schools

Review



Impacted Areas:



Proposed Base Areas

New School - Bowling Road ES & Existing Schools

Review

Buckhorn Creek ES, Herbert Akins Road ES, & Lincoln Heights Magnet ES (from Herbert Akins ES, Holly Ridge ES & Lincoln Heights Magnet ES)

2025-26 Base School	Calendar	Capacity w/ Trailers	2025-26 Projected Utilization w/ Trailers	2026-27 Projected Utilization w/ Trailers
Buckhorn Creek ES	Traditional	696	89%*	90%*
Fuquay-Varina ES	Traditional	716	84%	85%
Herbert Akins Road ES	Multi-track Year-round	916	94%*	95%*
Lincoln Heights Magnet ES	Traditional	508	88%*	90%*
South Lakes ES	Traditional	716	82%	79%
Bowling Road ES	Multi-track Year-round	924	70%	71%

New School - Bowling Road ES & Existing Schools

What If...

Buckhorn Creek ES, Herbert Akins Road ES, & Lincoln Heights Magnet ES (from Herbert Akins ES, Holly Ridge ES & Lincoln Heights Magnet ES)

2025-26 Base School	Calendar	Capacity w/ Trailers	2025-26 Projected Utilization w/ Trailers	2026-27 Projected Utilization w/ Trailers
Buckhorn Creek ES	Traditional	696	89%*	90%*
Fuquay-Varina ES	Traditional	716	84%	85%
Herbert Akins Road ES	Multi-track Year-round	916	94%*	95%*
Lincoln Heights Magnet ES	Traditional	508	88%*	90%*
South Lakes ES	Traditional	716	82%	79%
Bowling Road ES	Traditional	716	90%	92%

Response/ Rationale for Recommendation:

- **Enrollment Growth:** Due to current and projected enrollment growth in this region, and K-3 class size legislation, Bowling Road Elementary is recommended to operate on a multi-track year-round calendar to provide the additional capacity needed and avoid future overcrowding.
- **Impact of Traditional Calendar:** Converting Bowling Road to a traditional calendar would reduce the school's capacity and potentially lead to:
 - Continued overcrowding at nearby schools
 - The need to cap enrollment at nearby schools
 - Possible conversion of nearby schools to a year-round calendar to handle extra capacity
 - Additional reassignments in the next 2-3 years to accommodate growth
 - The need for another new elementary school which would delay other planned projects, as we have limited CIP funds
- **Managing Campus Calendars:** WCPSS acknowledges the challenge of two schools on the same campus operating on different calendars yet recognizes the need for the additional capacity to prevent more disruptive future changes.
- **Long-term Stability:** The year-round calendar will help manage growth in this rapidly expanding area, ensuring long-term stability for students and families.

Request/ Question:

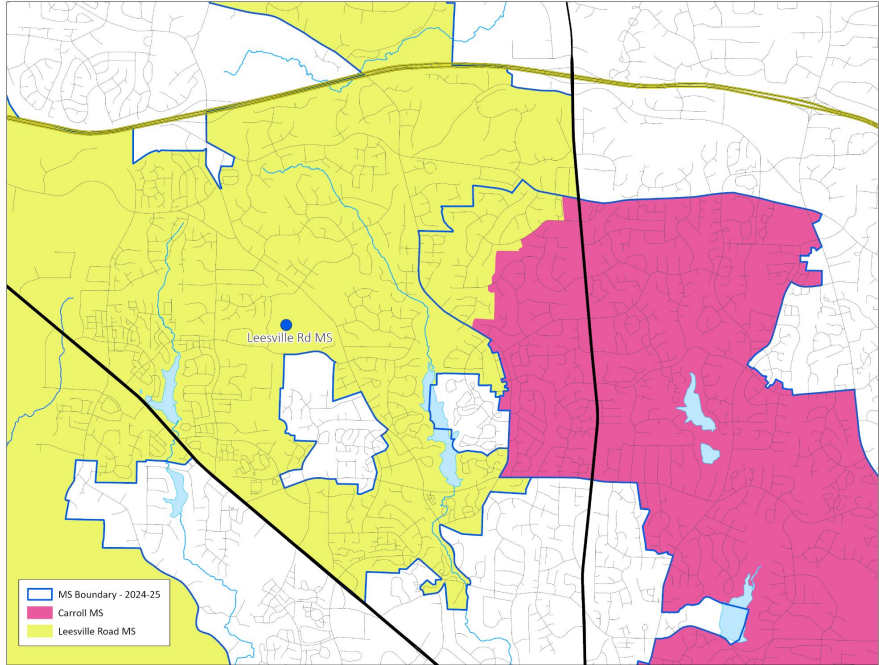
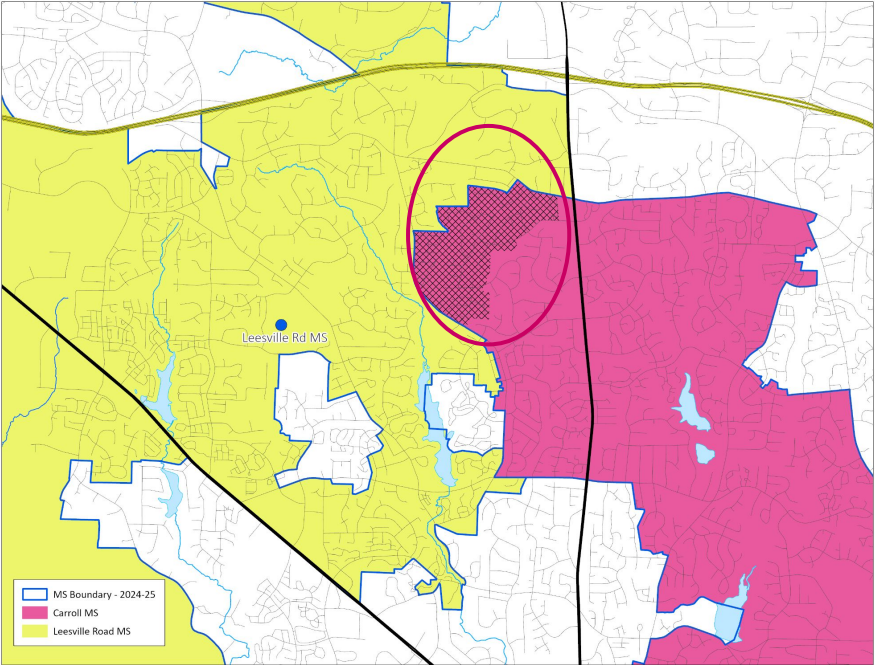
Families recommended for reassignment from Carroll Magnet Middle to Leesville Road Middle have asked to be removed from the plan and remain assigned to Carroll

Community Rationale:

- *Families indicate that the progression from Carroll to Sanderson High is important*
- *Families shared they like having access to the magnet programming at Carroll*

Existing School - Leesville Road MS (from Carroll Magnet

Review



Impacted Areas:



Proposed Base Areas

Existing School - Leesville Road MS (from Carroll Magnet MS)

2024-25 Base School	Calendar	Capacity w/ Trailers	2025-26 Projected Utilization w/ Trailers	2026-27 Projected Utilization w/ Trailers
Carroll Magnet MS	Traditional	1014	89%	91%
Leesville Road MS	Traditional	1222	63%	64%

2025-26 Base School	Calendar	Capacity w/ Trailers	2025-26 Projected Utilization w/ Trailers	2026-27 Projected Utilization w/ Trailers
Carroll Magnet MS	Traditional	1014	88%	89%
Leesville Road MS	Traditional	1222	64%	65%

Response/ Rationale for Recommendation:

- **Acknowledging Family Preferences:** We understand that many families have built strong ties to the Carroll Magnet Middle and Sanderson High progression and are concerned about losing that continuity by transitioning to Leesville Road Middle.
- **Historical Context:** Barton Pond Elementary was opened without a middle school boundary realignment, leading to students from this school transitioning to at least three different middle schools. We initially heard from a neighborhood last year asking for the transition from Carroll to Leesville, but we acknowledge that other families now have differing preferences.
- **Planned Adjustment:** Based on the feedback we have received, staff will recommend removing this reassignment from the current plan. We will continue to engage with this community in the development of future enrollment plans to ensure the best alignment between schools and family needs.

Request/ Question:

Families are requesting calendar options with district-provided transportation, particularly for those assigned to a year-round school but preferring a traditional calendar school

Community Rationale:

- *Families are seeking calendar flexibility with district transportation, especially when preferring a traditional calendar option*

Response/ Rationale for Recommendation:

- **Historical Context:** When the district first introduced both traditional and year-round calendars, we aimed to provide transportation to traditional calendar alternatives for families assigned to a year-round school, and similarly, families at traditional schools had the option to request year-round schools with transportation. Due to the ongoing bus driver shortage, running separate routes for traditional and year-round options in the same area is no longer feasible system-wide.
- **Efforts to Streamline:** In recent years, WCPSS has worked to reduce the strain on our transportation system by gradually removing transportation to ‘opposite’ calendar options for many families. We realize this shift has been challenging, and we are mindful of the impact this may have on family routines.
- **Current Options:** Families are still welcome to request transfers to ‘opposite’ calendar schools through our transfer process, but transportation will not be provided. We genuinely understand that this may create challenges for some families, and while we cannot guarantee approval for all requests, we are committed to working with families within policy and capacity limits to support them as best we can.

Request/ Question:

Families assigned to a capped school but overflowed to an alternate school are concerned about the timing of the stability transfer process - They want to know whether their student will be 'called back' to their base school before having to make a stability transfer decision

Community Rationale:

- *Families are seeking clarity on whether their student will return to their capped base school or remain at the overflow school before making decisions about stability transfers*

Response/ Rationale for Recommendation:

- **Clarifying the Concern:** We understand the difficulty families face in making an informed stability transfer decision if they don't yet know whether their child will be called back to their base (capped) school. The uncertainty of whether they will be asking for a transfer to the overflow school (usually farther from home) or to the base school adds unnecessary stress.
- **Planned Adjustment:** To help alleviate this concern, WCPSS will adjust the callback timeline for impacted schools to ensure families have the information they need before making a stability transfer decision.

Enrollment Plan Information & Updates

www.wcpss.net/2025enrollmentproposal

www.wcpss.net/assignmentplanning

Adjustments to the Initial Draft of 2025-2026 School Enrollment Plan

Review of Recommended Adjustments to Initial Draft

Stability Rules

- AoE and AoIT students
(slides 42-43)

New Schools

- Pleasant Plains Elementary
(slides 58-63)

Existing Schools

- Carroll Middle
(slides 100-103)

Calendar Application Changes

- K-8 alignment option for new Baucom Elementary families
(slides 51-52)

Process Timeline

- Mid-year callbacks for capped schools
(slides 106-107)

Review of Recommended Adjustments: Stability Rules for 2025-2026

Opening a New Elementary School (2025-2026)

For students proposed to be assigned from an existing elementary school to one of the NEW elementary schools (**Bowling Road ES, Pleasant Plains ES or Rex Road ES**):

- Current students **rising into 4th or 5th grade** are eligible to remain at their current school with transfer status (no transportation) through the end of 5th grade
 - Rising kindergarten, 1st, 2nd or 3rd grade **siblings** of these students are eligible to join their older sibling with transfer status (no transportation) through the end of 5th grade

NOTE: These requests must be submitted during the designated Stability Transfer Window

Opening a New High School (2025-2026)

For students proposed to be assigned from an existing high school to the NEW **Felton Grove High**:

- Current students **rising into 11th or 12th grade** will remain assigned to their current high school (*Felton Grove High will ONLY serve 9th & 10th grade in the first year*)
 - Rising 9th or 10th grade **siblings** of these students are eligible to join their older sibling with transfer status through the end of 12th grade
- Current students **rising into 10th grade** that are actively participating in the **Academy of Information Technology (AOIT)** at Apex High or the **Academy of Engineering (AOE)** program at Apex Friendship High are eligible to remain assigned to their current school with transfer status (no transportation) through the end of 12th grade

NOTE: These requests must be submitted during the designated Stability Transfer Window

Other Elementary Assignment Changes (2025-2026)

For students proposed to be assigned from an **existing elementary school to an existing or renovated elementary school (Baucom Elementary)**

- Current students **rising into 1st through 5th grade** are eligible to remain assigned to their current school with transfer status (no transportation) through the end of 5th grade
 - Rising **kindergarten siblings** of these students are eligible to join their older siblings with transfer status (no transportation) through the end of 5th grade

NOTE: These requests must be submitted during the designated Stability Transfer Window

Other Middle School Assignment Changes (2025-2026)

For students proposed to be assigned from an **existing middle school to an existing school or school with a new location (Fuquay-Varina Middle)**

- Current students **rising into 7th or 8th grade** are eligible to remain assigned to their current school with transfer status (no transportation) through the end of 8th grade
 - Rising **6th grade siblings** of these students are eligible to join their older siblings with transfer status (no transportation) through the end of 8th grade

NOTE: These requests must be submitted during the designated Stability Transfer Window

Other High School Assignment Changes (2025-2026)

For students proposed to be assigned from an **existing high school to an existing high school**

- Current students **rising into 10th through 12th grade** are eligible to remain assigned to their current school with transfer status (no transportation) through the end of 12th grade
 - Rising **9th grade siblings** of these students are eligible to join their older siblings with transfer status (no transportation) through the end of 12th grade

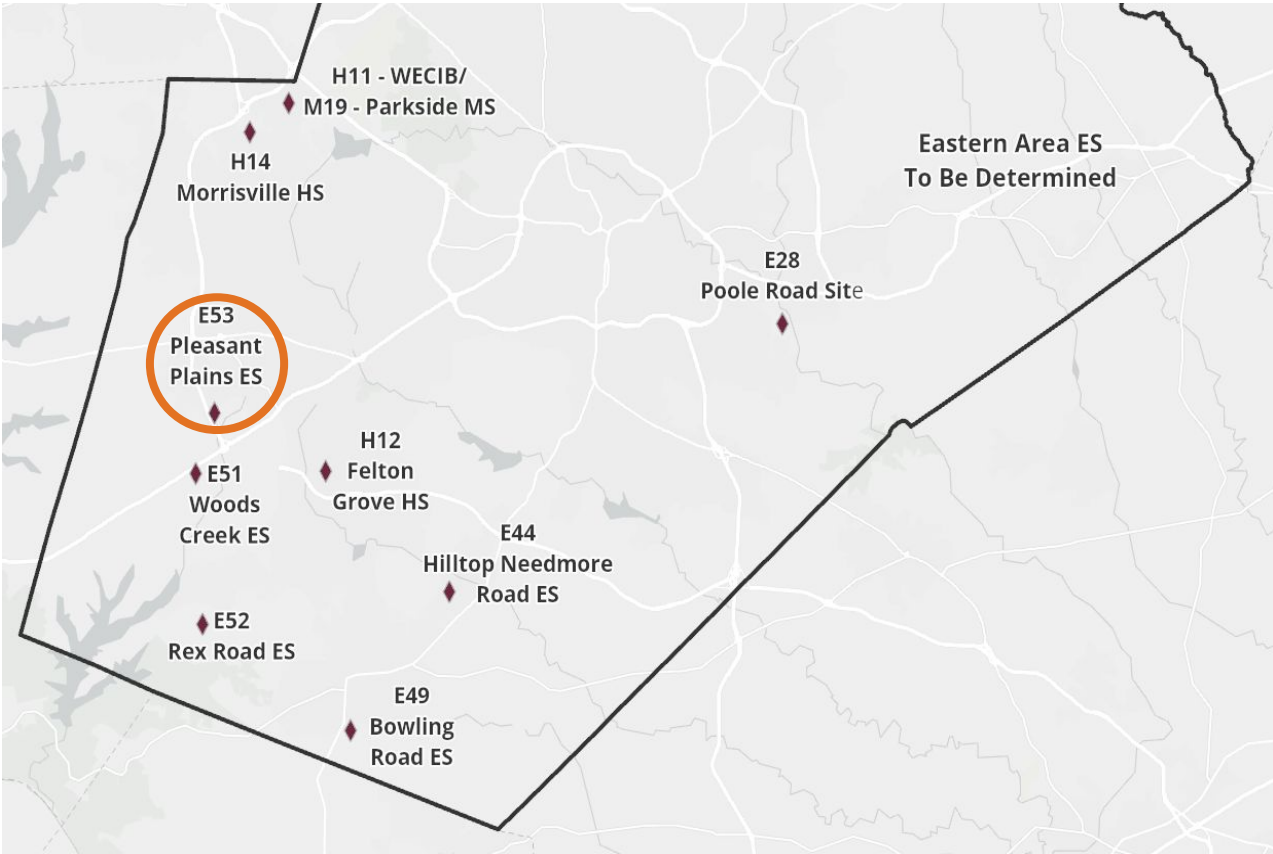
NOTE: These requests must be submitted during the designated Stability Transfer Window

Review of Recommended Adjustments: Related to the Opening of New Schools

Review

Pleasant Plains Elementary





New School - Pleasant Plains ES (opening July 2025)

Calendar Recommendation

- Multi-track Year-round, Capacity = 924

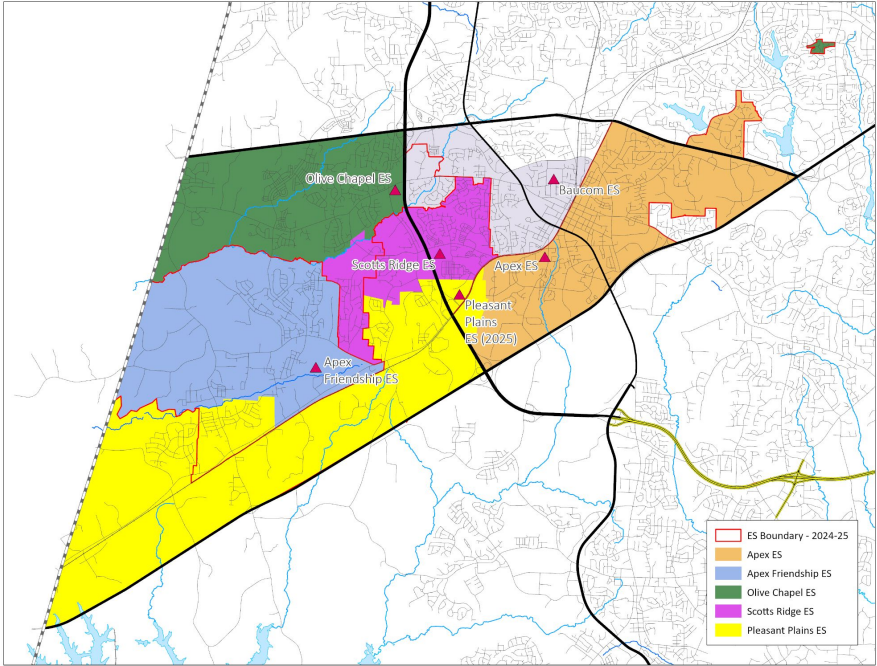
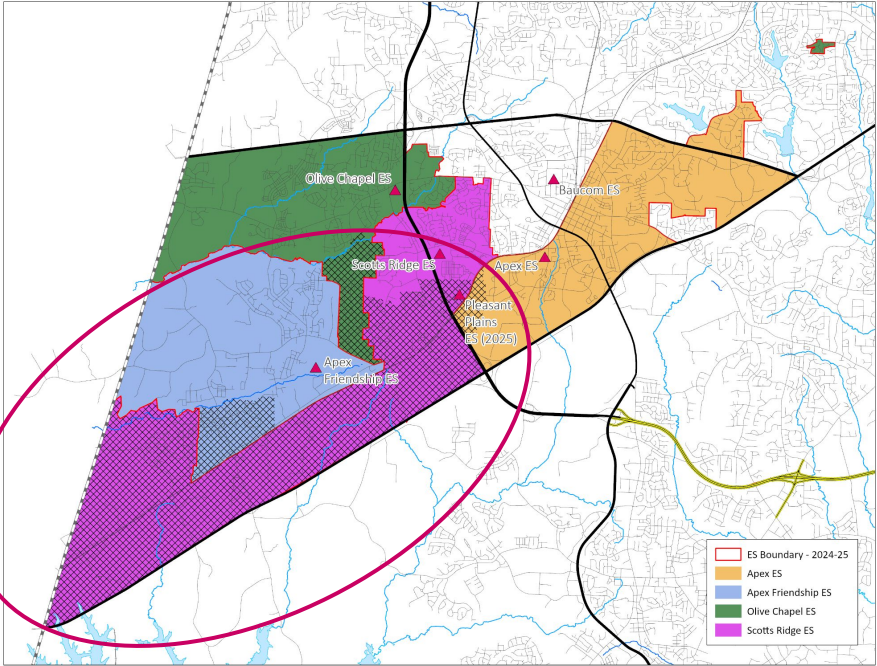
Impacted Schools

- Apex ES, Apex Friendship ES & Scotts Ridge ES (& Olive Chapel ES)

2024-25 Base School	Calendar	Capacity w/ Trailers	2025-26 Projected Utilization w/ Trailers	2026-27 Projected Utilization w/ Trailers
Apex ES	Traditional	588	96%	99%
Apex Friendship ES	Traditional	716	138%	147%
(Olive Chapel ES)	Multi-track Year-round	856	144%	147%
Scotts Ridge ES	Traditional	736	116%	118%

New School - Pleasant Plains ES & Existing Schools

Review



Impacted Areas:



Proposed Base Areas

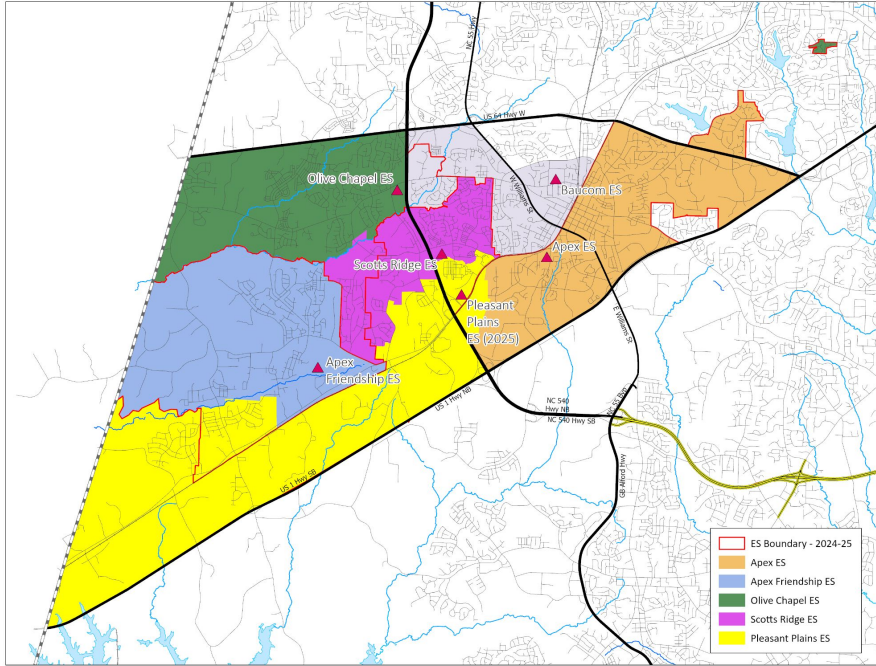
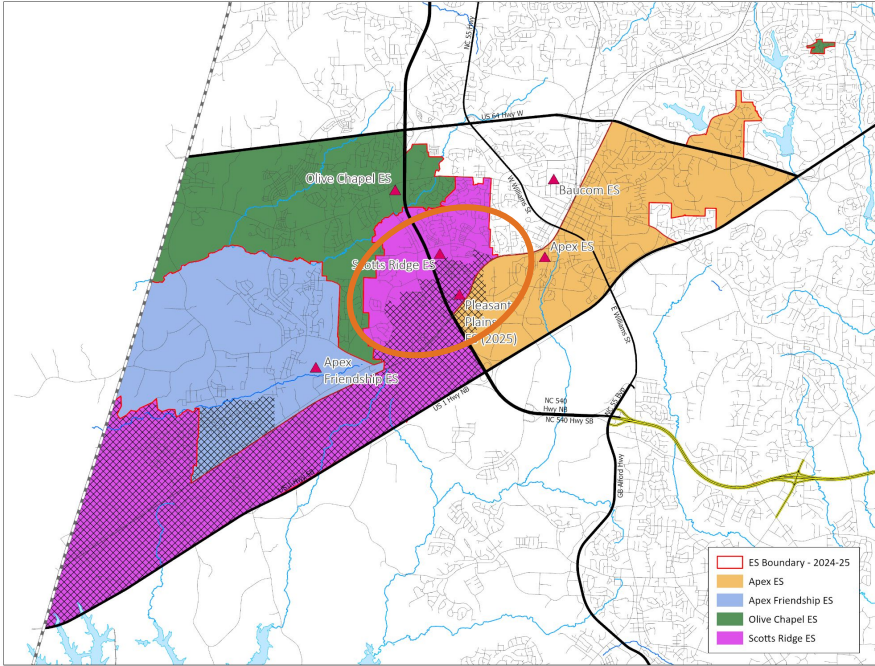
New School - Pleasant Plains ES & Existing Schools

Scotts Ridge ES (from Olive Chapel ES)

2025-26 Base School	Calendar	Capacity w/ Trailers	2025-26 Projected Utilization w/ Trailers	2026-27 Projected Utilization w/ Trailers
Apex ES	Traditional	588	96%	99%
Apex Friendship ES	Traditional	716	113%	121%
Olive Chapel ES	Multi-track Year-round	856	119%*	121%*
Scotts Ridge ES	Traditional	736	76%	76%
Pleasant Plains ES	Multi-track Year-round	924	67%	71%

New School - Pleasant Plains ES & Existing Schools

UPDATE



Impacted Areas:



Proposed Base Areas

New School - Pleasant Plains ES & Existing Schools

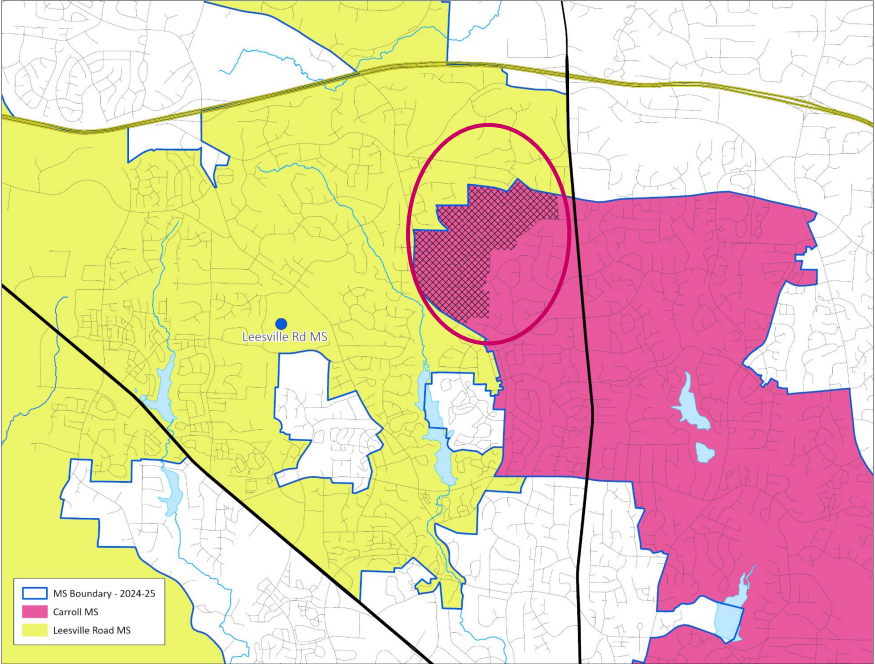
Scotts Ridge ES (from Olive Chapel ES)

2025-26 Base School	Calendar	Capacity w/ Trailers	2025-26 Projected Utilization w/ Trailers	2026-27 Projected Utilization w/ Trailers
Apex ES	Traditional	588	96%	99%
Apex Friendship ES	Traditional	716	113%	121%
Olive Chapel ES	Multi-track Year-round	856	119%*	121%*
Scotts Ridge ES	Traditional	736	88% (was 76%)	88% (was 76%)
Pleasant Plains ES	Multi-track Year-round	924	57% (was 67%)	62% (was 71%)

Review of Recommended Adjustments: Related to Existing Schools

Existing School - ~~Leesville Road MS~~ (from Carroll Magnet I

UPDATE



No change recommended - middle school assignment for this area will remain Carroll Middle

Impacted Areas:



Proposed Base Areas

Existing School - ~~Leesville Road MS~~ (from Carroll Magnet MS)

2024-25 Base School	Calendar	Capacity w/ Trailers	2025-26 Projected Utilization w/ Trailers	2026-27 Projected Utilization w/ Trailers
Carroll Magnet MS	Traditional	1014	89%	91%
Leesville Road MS	Traditional	1222	63%	64%

2025-26 Base School	Calendar	Capacity w/ Trailers	2025-26 Projected Utilization w/ Trailers	2026-27 Projected Utilization w/ Trailers
Carroll Magnet MS	Traditional	1014	88%	89%
Leesville Road MS	Traditional	1222	64%	65%

Review of Recommended Adjustments: Calendar Application Changes

Middle School Calendar Application Changes *(continued)*

Current Base	Current Calendar Application School(s)	Proposed Calendar Application School
Carroll Magnet (T)	Pine Hollow (MTYR)*	n/a
Leesville Road (T)	Pine Hollow (MTYR)*	n/a
Pine Hollow (MTYR)*	Leesville Road (T)	n/a
River Bend (T)	Rolesville (MTYR)*	n/a
Rolesville (MTYR)*	Wake Forest (T)	n/a
West Millbrook Magnet (T)	Pine Hollow (MTYR)*	n/a
Lufkin Road (MTYR)**	n/a	Apex (T)

*Pine Hollow Middle and Rolesville Middle will operate on a traditional calendar beginning in the 2025-26 school year.

**ONLY the portion of base that is east of Hwy 540 and is proposed to be assigned to Baucom Elementary in the 2025-26 school year.

Review of Recommended Adjustments: Timelines for District Processes

Timelines for District Processes

- **October 12** - Early College Fair
- **October 14** - Pre-enrollment Opens for 2025-2026
 - Magnet/ Year-round Application Opens
 - Early College Application Opens
- **October 26** - Magnet and Early College Fair
- **Late November** - Mid-Year Callbacks for Capped Schools
- **December 4 through December 18 (tentative)** - Stability Transfer Application Period
- **December 12** - Early College Application Closes
- **December 16 through December 18** - Distribution of Initial Assignment Notifications for all students
- **January 23** - Magnet/ Year-round Application Closes
- **February 21** - Early College, Magnet & Year-round Results Posted
- **February 24 through February 28** - Magnet Welcome Week
- **March 3 through March 14** - Official Request for Transfer Application Period

Planning Timeline & Next Steps

Planning Timeline

March 5, 2024 - Public Engagement Plan for the 2025-2026 WCPSS Enrollment Plan [BoE Work Session]

May 7, 2024 - Initial Planning Discussion [BoE Work Session]

- May-June - Staff continues outreach (website updates, focus groups, etc.)
- May-June - Staff works on developing Initial Draft of 2025-2026 Enrollment Plan

June 18, 2024 - Update on Progress of Public Engagement Plan [BoE Work Session]

- June-September - Staff continues work on developing Initial Draft of 2025-2026 Enrollment Plan

September 3, 2024 - Presentation of Initial Draft of 2025-2026 Enrollment Plan [BoE Work Session]

- September-October - Staff hosts public engagement activities (in person and virtual)
- October - Staff prepares summary of feedback received and any recommended revisions

October 15, 2024 - Review Feedback Received on Initial Draft [BoE Work Session]

- October - Staff hosts final public engagement session(s) (virtual)

November 12, 2024 - Public Hearing [BoE Meeting]

November 26, 2024 - Presentation of Final Draft of 2025-2026 Enrollment Plan for Review & Approval [BoE Work Session & Meeting]

Next Steps

- **October 15:** District website updated with revised draft information wcpss.net/2025enrollmentproposal & www.wcpss.net/assignmentplanning
- **October 15 - November 3:** Public comment capture tool open and collecting feedback and questions on the revised draft (wcpss.net/draftfeedback)
- **October 22:** Host virtual public engagement session
 - October 22, 6:00-7:30 pm - General Overview (virtual)
- **November 12:** Board of Education Public Hearing

Information & Updates

www.wcpss.net/2025enrollmentproposal

www.wcpss.net/assignmentplanning



Questions?

Feedback, Thoughts & Ideas...

Addendum

Prior Presentations, Updated Map

Prior Presentations Included in the Agenda Attachments

- Initial Draft of WCPSS 2025-2026 School Enrollment Plan (pdf file)
 - Original presentation as shared during the Board Work Session on September 3, 2024

Note: Board Policy 4150, Detailed Maps, and Data Reports were previously posted with the September 3, 2024 Board materials. Additional information, including descriptions of the recommended changes and links to an online address look-up tool are on our district website at www.wcpss.net/2025enrollmentproposal

Updated Map

- Updated version of the map showing the adjusted proposed base areas for schools impacted by the opening of Pleasant Plains Elementary
- Additional information, including descriptions of the recommended changes and links to an online address look-up tool are on our district website at www.wcpss.net/2025enrollmentproposal

Updated Pleasant Plains Elementary Map, including adjustments to Scotts Ridge Elementary (10.15.24)

