

Office of Student Assignment

WCPSS 2025-2026 School Enrollment Plan

Final Draft

A Multi-year Approach to Growth Management

Board of Education Work Session
November 26, 2024

Purpose

Staff is here today to share the final draft of the 2025-2026 school enrollment plan.

Our goals for today's session are to:

- Review the process used to develop this year's plan
- Review the recommendations included in the final draft
- Respond to any clarifying questions from the Board in preparation for the Board's approval of the Final Draft of the 2025-2026 School Enrollment Plan during today's Board Meeting

Strategic Plan Alignment

Family & Community Engagement

Aim 6: District Communications Structures

Provide clear, accessible, and consistent information about family involvement opportunities.

Aim 12: Community Engagement

Build strong relationships among staff, families, and community organizations in order to share resources and promote well-being.

12.1 Increase support of non-English speaking families

Ensure multilingual and non-English speaking families and all schools are aware of the support and services available from the district to help them engage fully with their school and our district.

12.2 Build strong community partnerships

Develop and share with district leaders a systemic approach to building partnerships with and seeking input and support from community organizations with a focus on partners in underserved communities.

Strategic Plan Alignment

(continued)

Operational Effectiveness

Aim 14: Differentiated Resource Allocation

Differentiate resource allocation to provide PreK-12 students with equitable access to high-quality teachers and principals, and sufficient support services.

14.3 Evaluate School Choice, Planning and Assignment Programs

Evaluate student assignment policy, practices, and magnet programs to foster the balance and socio-economic integration of schools, in alignment with the magnet objectives of reducing high concentrations of poverty, promoting school integration and diversity, maximizing use of school facilities, and providing innovative and/ or expanded educational opportunities.

Aim 19: Transportation Upgrades

Evaluate practices to ensure safe, timely, efficient, and reliable transportation services.

19.2 Incorporate Bus Routing in Student Assignment Decisions

Problem-solve bus route challenges with strategic student assignment changes.

Policy Alignment

WCPSS Board Policy 4150: School Assignment and Transfers*



Section A. Drawing of School Attendance Areas

1. The assignment areas will be developed by balancing, to the extent reasonable, the goals and factors set forth below and will include target ranges, where appropriate, to accomplish these goals and factors:
 - a. **Student Achievement**
 - b. **Stability**
 - c. **Proximity**
 - d. **Operational Efficiency**

Overview

- **Review**
 - Overview of Planning Process
- **Final Draft of 2025-26 School Enrollment Plan**
 - Recommendations Related to the Opening of New Schools
 - Recommendations Addressing School Choice Options
 - Recommendations for Calendar Application Changes to Support Transportation Efficiency
 - Recommendations for Stability Rules for 2025-2026
- **Planning Timeline & Next Steps**
- **Addendum**

Review

Overview of Planning Process

Assignment Planning Information & Updates

www.wcpss.net/2025enrollmentproposal

www.wcpss.net/assignmentplanning

1

Presentation of the Annual Membership Forecast (1-year and 10-year projections)

2

Review of Projected Crowding for the Next School Year

3

Review of Capital Improvement Plan (CIP) Updates (7-year plan)

4

Preparation of the Annual Enrollment Plan

5

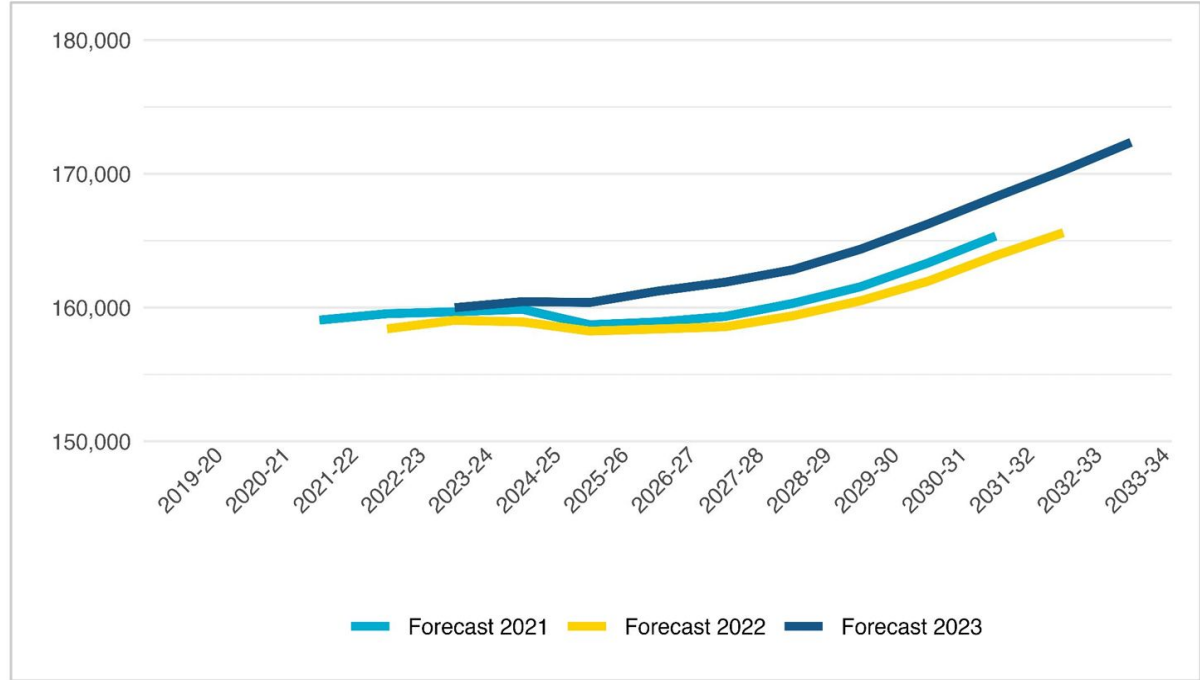
Review and Approval of Capped Schools due to Overcrowding Concerns

6

Review of Options to Address Other School Utilization Concerns

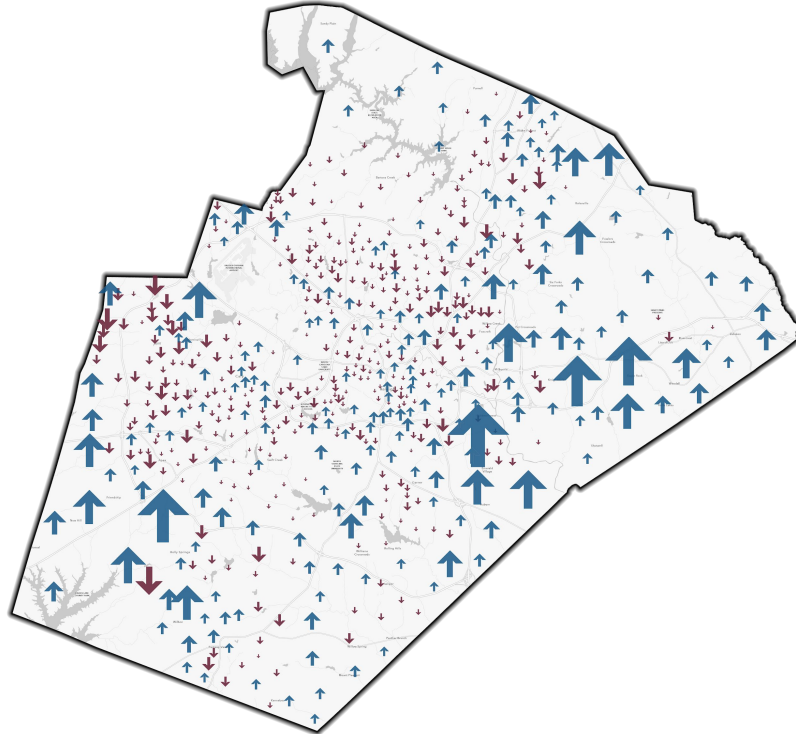
Presentation of the Annual Membership Forecast (1-year and 10-year projections)

Review








Projected Enrollment Change: 2024 to 2033


Review



10 Year Student Membership Forecast
Projected Enrollment Change 2024 to 2033

-  > 250
-  ↑
-  0
-  ↓
-  < -180

Total K-12 Projected Enrollment	
2024	160,445 students
2033	172,357 students

 **WAKE COUNTY**
PUBLIC SCHOOL SYSTEM

1

Presentation of the Annual Membership Forecast (1-year and 10-year projections)

2

Review of Projected Crowding for the Next School Year

3

Review of Capital Improvement Plan (CIP) Updates (7-year plan)

4

Preparation of the Annual Enrollment Plan

5

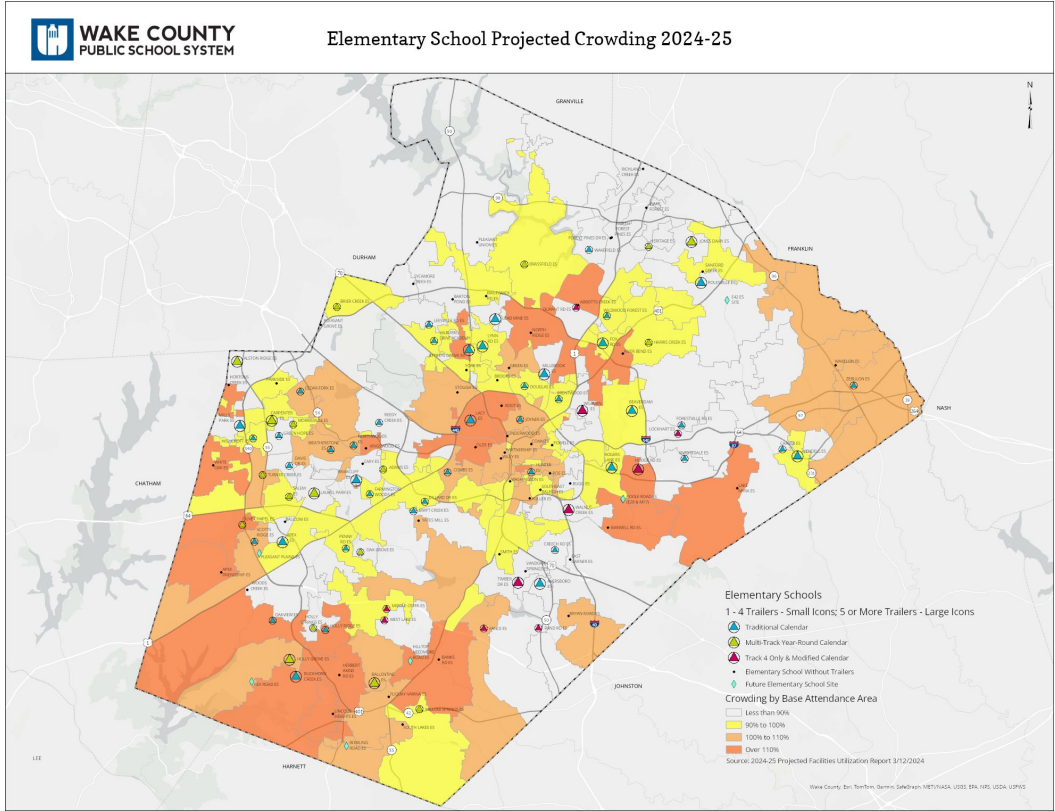
Review and Approval of Capped Schools due to Overcrowding Concerns

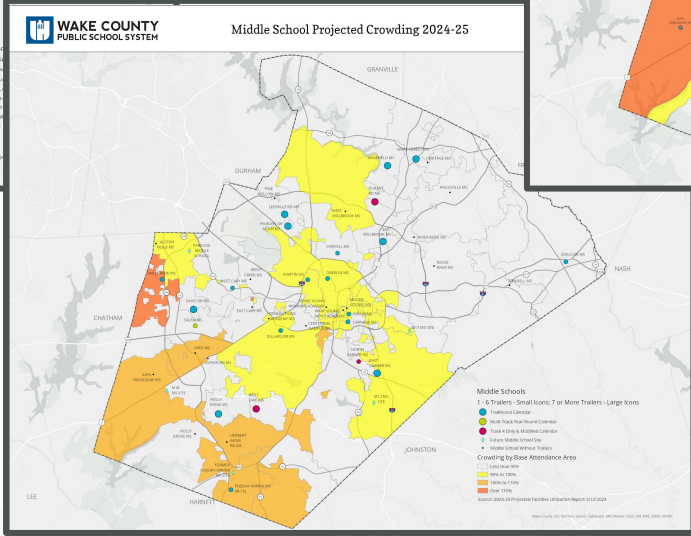
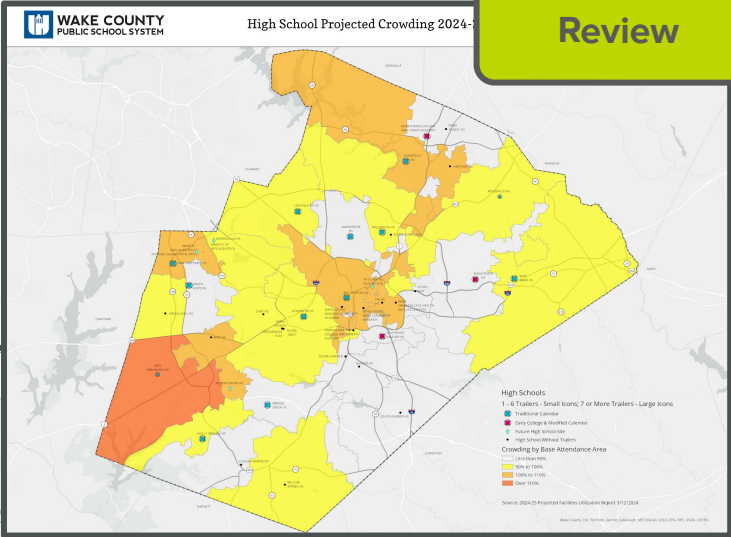
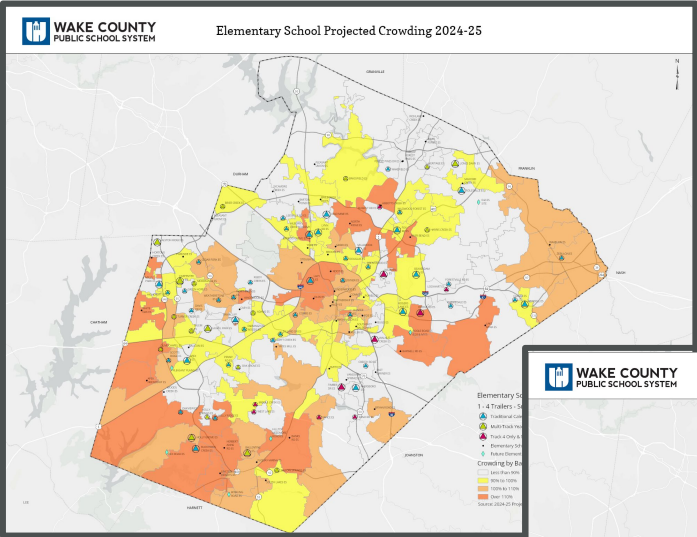
6

Review of Options to Address Other School Utilization Concerns

Review of Projected Crowding for the Next School Year

Review





Review of Capital Improvement Plan (CIP) Updates (7-year plan)

Review

1

Presentation of the Annual Membership Forecast (1-year and 10-year projections)

2

Review of Projected Crowding for the Next School Year

3

Review of Capital Improvement Plan (CIP) Updates (7-year plan)

4

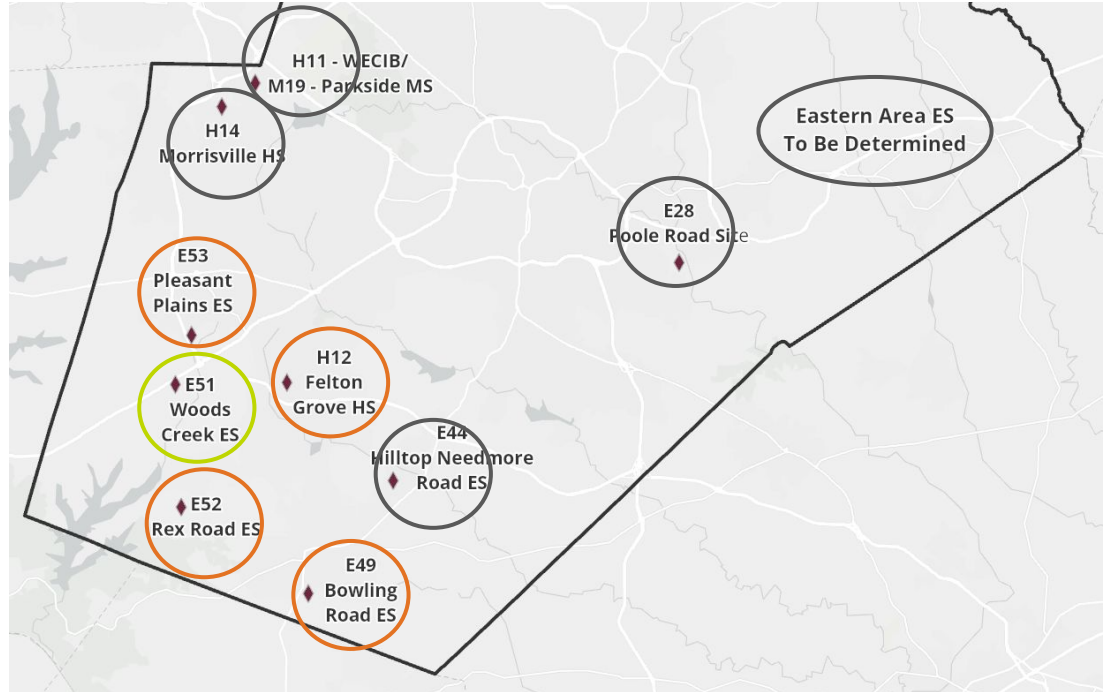
Preparation of the Annual Enrollment Plan

5

Review and Approval of Capped Schools due to Overcrowding Concerns

6

Review of Options to Address Other School Utilization Concerns



School Name	2024-25	2025-26	2026-27	2027-28	2028-29	2029-30	2030-31
Woods Creek ES	E51 / 920623						
Bowling Road ES		E49 ES*					
Pleasant Plains ES		E53 ES*					
Rex Road ES		E52 ES*					
Felton Grove HS		H12 HS*					
Hilltop Needmore ES	E44 ES*	E44 ES*	E44 ES*				
Morrisville HS				H14 HS*			
NEW (Parkside) MS/ Wake EC of Infor. & Biotech.					M19 MS/ H11 EC*		
Eastern Wake ES						TBD*	TBD*
Raleigh Area ES							TBD*
New School: A new school opened/ opening in the current school year that already has an approved attendance area.							
New School: A new school opening with a unique base attendance area that requires an approved attendance area.							
Swing Space: A new school serving as a swing space for an existing school's renovation before opening with its own population.							
Future School: A new future school site that will open with a unique base attendance area.							

Review



1

Presentation of the Annual Membership Forecast (1-year and 10-year projections)

2

Review of Projected Crowding for the Next School Year

3

Review of Capital Improvement Plan (CIP) Updates (7-year plan)

4

Preparation of the Annual Enrollment Plan

5

Review and Approval of Capped Schools due to Overcrowding Concerns

6

Review of Options to Address Other School Utilization Concerns

Preparation of the Annual Enrollment Plan

1. Public engagement to capture thoughts and ideas to support the development of the next enrollment plan
2. Review of goals for the next enrollment plan with the Board
3. Presentation of an initial draft of the enrollment plan
4. Public engagement to help families review and understand the recommendations in the initial draft plan
5. Review of public feedback with the Board and presentation of any recommended revisions to the initial draft
6. Public hearing on the draft enrollment plan by the Board
7. Presentation of final draft of the enrollment plan for the Board's review and approval

1

Presentation of the Annual Membership Forecast (1-year and 10-year projections)

2

Review of Projected Crowding for the Next School Year

3

Review of Capital Improvement Plan (CIP) Updates (7-year plan)

4

Preparation of the Annual Enrollment Plan

5

Review and Approval of Capped Schools due to Overcrowding Concerns

6

Review of Options to Address Other School Utilization Concerns

Preparation of the Annual Enrollment Plan

1. Public engagement to capture thoughts and ideas to support the development of the next enrollment plan
2. Review of goals for the next enrollment plan with the Board
3. Presentation of an initial draft of the enrollment plan
4. Public engagement to help families review and understand the recommendations in the initial draft plan
5. Review of public feedback with the Board and presentation of any recommended revisions to the initial draft
6. Public hearing on the draft enrollment plan by the Board
7. Presentation of final draft of the enrollment plan for the Board's review and approval

March - May
(2023 & 2024)

Pre-Release Public Engagement Activities...

Jun 2022 -
Aug 2024

1

Website Launch (assignment planning)



15,649

Page Views (as of 11.10.24)

10

Information Sessions



402

Information Session Participants

3

Rounds of Focus Groups



134

Focus Group Participants

9

ThoughtExchanges



2314 / 1676

ThoughtExchange Participants / Thoughts

The complete Public Engagement Summary: WCPSS 2025-2026 School Enrollment Plan report is included in the Board agenda attachments.

Key Findings & Planning Adjustments

1. Expanded Eligibility for Stability Transfers
2. Commitment to Cohort and Calendar Continuity
3. Preference for Year-Round Calendars in High-growth Areas
4. Earlier Communication & Engagement
5. Maintain Focus on Teacher Quality & School Operations

The complete Public Engagement Summary: WCPSS 2025-2026 School Enrollment Plan report is included in the Board agenda attachments.

1

Presentation of the Annual Membership Forecast (1-year and 10-year projections)

2

Review of Projected Crowding for the Next School Year

3

Review of Capital Improvement Plan (CIP) Updates (7-year plan)

4

Preparation of the Annual Enrollment Plan

5

Review and Approval of Capped Schools due to Overcrowding Concerns

6

Review of Options to Address Other School Utilization Concerns

Preparation of the Annual Enrollment Plan

1. Public engagement to capture thoughts and ideas to support the development of the next enrollment plan
2. Review of goals for the next enrollment plan with the Board
3. Presentation of an initial draft of the enrollment plan
4. Public engagement to help families review and understand the recommendations in the initial draft plan
5. Review of public feedback with the Board and presentation of any recommended revisions to the initial draft
6. Public hearing on the draft enrollment plan by the Board
7. Presentation of final draft of the enrollment plan for the Board's review and approval

May

Focus Areas for the 2025-2026 Enrollment Plan

Opening of New Schools

- Bowling Road Elementary
- Pleasant Plains Elementary
- Rex Road Elementary
- Felton Grove High

Address Capped/ Overcrowded Schools Where Possible

Address School Choice Options

Continue to align school choice initiatives that support Policy 4150 and the district's strategic plan to support the magnet objectives of:

- reducing high concentrations of poverty and promoting integration and diversity
- improve operational efficiency by maximizing use of school facilities and improving transportation efficiency

1

Presentation of the Annual Membership Forecast (1-year and 10-year projections)

2

Review of Projected Crowding for the Next School Year

3

Review of Capital Improvement Plan (CIP) Updates (7-year plan)

4

Preparation of the Annual Enrollment Plan

5

Review and Approval of Capped Schools due to Overcrowding Concerns

6

Review of Options to Address Other School Utilization Concerns

Preparation of the Annual Enrollment Plan

1. Public engagement to capture thoughts and ideas to support the development of the next enrollment plan
2. Review of goals for the next enrollment plan with the Board
3. Presentation of an initial draft of the enrollment plan
4. Public engagement to help families review and understand the recommendations in the initial draft plan
5. Review of public feedback with the Board and presentation of any recommended revisions to the initial draft
6. Public hearing on the draft enrollment plan by the Board
7. Presentation of final draft of the enrollment plan for the Board's review and approval

September 3

Enrollment Plan Information & Updates

www.wcpss.net/2025enrollmentproposal

www.wcpss.net/assignmentplanning

Preparation of the Annual Enrollment Plan

1

Presentation of the Annual Membership Forecast (1-year and 10-year projections)

2

Review of Projected Crowding for the Next School Year

3

Review of Capital Improvement Plan (CIP) Updates (7-year plan)

4

Preparation of the Annual Enrollment Plan

5

Review and Approval of Capped Schools due to Overcrowding Concerns





6

Review of Options to Address Other School Utilization Concerns

1. Public engagement to capture thoughts and ideas to support the development of the next enrollment plan
2. Review of goals for the next enrollment plan with the Board
3. Presentation of an initial draft of the enrollment plan
4. Public engagement to help families review and understand the recommendations in the initial draft plan
5. Review of public feedback with the Board and presentation of any recommended revisions to the initial draft
6. Public hearing on the draft enrollment plan by the Board
7. Presentation of final draft of the enrollment plan for the Board's review and approval

September

Post-Release Public Engagement Activities...Initial Draft

1		53,486 Page Views (as of 11.10.24)
Website Launch (enrollment proposal)		
4		284/ 587
Information Sessions		Session Participants / Recording Views
1		95
Open House		Open House Attendees
1		1,339 / 1503
ThoughtExchange		ThoughtExchange Participants / Thoughts

The complete Public Engagement Summary: WCPSS 2025-2026 School Enrollment Plan report is included in the Board agenda attachments.

1

Presentation of the Annual Membership Forecast (1-year and 10-year projections)

2

Review of Projected Crowding for the Next School Year

3

Review of Capital Improvement Plan (CIP) Updates (7-year plan)

4

Preparation of the Annual Enrollment Plan

5

Review and Approval of Capped Schools due to Overcrowding Concerns

6

Review of Options to Address Other School Utilization Concerns

Preparation of the Annual Enrollment Plan

1. Public engagement to capture thoughts and ideas to support the development of the next enrollment plan
2. Review of goals for the next enrollment plan with the Board
3. Presentation of an initial draft of the enrollment plan
4. Public engagement to help families review and understand the recommendations in the initial draft plan
5. Review of public feedback with the Board and presentation of any recommended revisions to the initial draft
6. Public hearing on the draft enrollment plan by the Board
7. Presentation of final draft of the enrollment plan for the Board's review and approval

October 15

Review of Recommended Adjustments to Initial Draft

Stability Rules

- Include rising 10th grade AoE and AoIT students

New Schools

- Pleasant Plains Elementary attendance area adjustment

Existing Schools

- Carroll Middle removed from plan

Calendar Application Changes

- K-8 alignment option for new Baucom Elementary families
 - Apex Middle (traditional application)

Process Timeline

- Earlier mid-year callbacks for capped schools impacted by the plan

Post-Release Public Engagement Activities...Revised Draft

1	Website Launch (enrollment proposal)	53,486
		Page Views (as of 11.10.24)
2	Information Sessions	49 / 282
		Session Participants / Recording Views
1	ThoughtExchange	85 / 81
		ThoughtExchange Participants / Thoughts
1	ThoughtExchange Survey	515 / 246
		Survey Participants / Completed Surveys
1	Public Hearing	13
		Speakers

The complete Public Engagement Summary: WCPSS 2025-2026 School Enrollment Plan report is included in the Board agenda attachments.

1

Presentation of the Annual Membership Forecast (1-year and 10-year projections)

2

Review of Projected Crowding for the Next School Year

3

Review of Capital Improvement Plan (CIP) Updates (7-year plan)

4

Preparation of the Annual Enrollment Plan

5

Review and Approval of Capped Schools due to Overcrowding Concerns

6

Review of Options to Address Other School Utilization Concerns

Preparation of the Annual Enrollment Plan

1. Public engagement to capture thoughts and ideas to support the development of the next enrollment plan
2. Review of goals for the next enrollment plan with the Board
3. Presentation of an initial draft of the enrollment plan
4. Public engagement to help families review and understand the recommendations in the initial draft plan
5. Review of public feedback with the Board and presentation of any recommended revisions to the initial draft
6. Public hearing on the draft enrollment plan by the Board
7. Presentation of final draft of the enrollment plan for the Board's review and approval

November 12

Review of Public Hearing

13 Speakers

- 3 representing Jordan Pointe requested their area be removed from the plan for Pleasant Plains Elementary
- 3 representing Woodbury requested their area be removed from the plan for Pleasant Plains Elementary
- 6 representing Ashley Downs & Pearson Farms requested their area be removed from the plan for Baucom Elementary
- 1 representing Seagroves Farm requested their area be removed from the plan for Penny Road Elementary

The complete Public Engagement Summary: WCPSS 2025-2026 School Enrollment Plan report is included in the Board agenda attachments.

Jordan Pointe

Response/ Rationale for Recommendation:

- **Overcrowding Concerns:** Scotts Ridge Elementary is overcrowded and capped, with new families being assigned to an 'overflow' school because the building is operating above capacity. Additional enrollment is not feasible without compromising the learning environment.
- **Capacity at New School:** The new school, operating on a year-round calendar, provides the needed capacity to relieve overcrowding and absorb continued growth in the area.
- **Family Calendar Preferences:** While we understand the preference for traditional calendars, the year-round option offers additional capacity to address enrollment growth in the region and allows for greater stability of school assignment overtime.
- **Support for Stability:** WCPSS is prepared to honor stability transfer requests for existing students in this neighborhood that are rising into 4th or 5th grade, along with any younger siblings (including rising Kindergarteners), to remain at Scotts Ridge Elementary. We understand the challenges posed by not providing transportation for these transfers; however, due to ongoing bus driver shortages, we are unable to offer transportation for transfer students at this time.
- **Transition Support:** WCPSS is committed to supporting families through the transition, with resources available to help students and families feel welcomed and connected in their new school community.
- **Distance:** Pleasant Plains Elementary is approximately 0.5 miles closer to these neighborhoods than Scotts Ridge Elementary.

The complete Public Engagement Summary: WCPSS 2025-2026 School Enrollment Plan report is included in the Board agenda attachments.

Woodbury

Response/ Rationale for Recommendation:

- **Overcrowding Concerns:** Apex Friendship Elementary is capped due to severe overcrowding, and new families are being assigned to an 'overflow' school because the building is operating above capacity. Additional enrollment is not feasible without compromising the learning environment.
- **Capacity at New School:** The new school, operating on a year-round calendar, provides the needed capacity to relieve overcrowding and absorb continued growth in the area.
- **Family Calendar Preferences:** While we understand the preference for traditional calendars, the year-round option offers additional capacity to address enrollment growth in the region and allows for greater stability of school assignment overtime.
- **Support for Stability:** WCPSS is prepared to honor stability transfer requests for existing students in this neighborhood that are rising into 4th or 5th grade, along with any younger siblings (including rising Kindergarteners), to remain at Apex Friendship Elementary. We understand the challenges posed by not providing transportation for these transfers; however, due to ongoing bus driver shortages, we are unable to offer transportation for transfer students at this time.

The complete Public Engagement Summary: WCPSS 2025-2026 School Enrollment Plan report is included in the Board agenda attachments.

Woodbury

Response/ Rationale for Recommendation: *(continued)*

- **Transition Support:** WCPSS is committed to supporting families through the transition, with resources available to help students and families feel welcomed and connected in their new school community.
- **Distance:** Pleasant Plains Elementary is approximately 2 miles farther from these neighborhoods than Apex Friendship Elementary. In addition, these neighborhoods are not located in a “no transportation zone” for Apex Friendship Elementary as they are more than 1.5 miles from the school.
- **UPDATE TO RESPONSE - Frequent Reassignments:** The last base assignment change for this area occurred in 2022, when students were reassigned from Scotts Ridge Elementary to Apex Friendship Elementary. We recognize, however, that some families may have experienced additional changes due to capping, choice applications, or other individual circumstances. Families that fall outside the stability rules will be able to submit requests through the hardship transfer process, and staff will review such requests following the guidelines provided in Board Policy 4150.

The complete Public Engagement Summary: WCPSS 2025-2026 School Enrollment Plan report is included in the Board agenda attachments.

Ashley Downs & Pearson Farms

Response/ Rationale for Recommendation:

- **UPDATED - Overcrowding Concerns:** Olive Chapel Elementary is significantly overcrowded and capped, with new families being assigned to an 'overflow' school because the building is operating above capacity. Additional enrollment is not feasible without compromising the learning environment. **This portion of the Olive Chapel base is the most proximate to Baucom Elementary and allows for a contiguous attendance area for Baucom Elementary.**
- **UPDATED - Transportation Considerations:** While a sidewalk and greenway connect the neighborhoods to the current school, these neighborhoods are not located in a “no transportation zone” for Olive Chapel Elementary as determined by the district’s Transportation Department. **District transportation will remain available to the designated base school for these neighborhoods, regardless of any changes to their base assignment.**
- **Benefits of Reassignment:** Baucom Elementary school has been fully renovated and now offers more seats to accommodate a larger student population. The reassignment allows for better resource allocation, enhancing the educational experience for all students in this area.
- **Support for Stability:** WCPSS is prepared to honor **ALL** stability transfer requests for existing students from these neighborhoods, as this assignment change is from an existing school to another existing school. Allowing these students to stay at Olive Chapel Elementary is an effort to ease the transition.

The complete Public Engagement Summary: WCPSS 2025-2026 School Enrollment Plan report is included in the Board agenda attachments.

Ashley Downs & Pearson Farms

Response/ Rationale for Recommendation: *(continued)*

- **UPDATED - Transition Support:** WCPSS is committed to supporting families through the transition, with resources available to help students and families feel welcomed and connected in their new school community. **Clarifying - Apex Middle has been added as a calendar option for these areas and staff will approve requests to align calendars for families impacted by this recommendation.**
- **Distance:** Baucom Elementary is approximately 1.5 to 2 miles farther from these neighborhoods than Olive Chapel Elementary.
- **UPDATE TO RESPONSE - Planning Process:** As described in prior presentations and detailed on the district website's Assignment Planning webpage, the planning process is structured into six key steps. Each year, this process begins with the release of the annual student membership forecast, which most recently occurred in February 2024. To keep families informed and engaged, the district initiated discussions with impacted communities as early as March 2023, well before the release of the initial draft of the plan. In addition to these early engagement sessions, we continue to maintain and update resources, forecasts, and relevant information on both the Assignment Planning webpage and the Enrollment Proposal page. These resources are available to help families understand the data and guiding principles behind each recommendation, and district staff hosted information sessions for families to help them with questions throughout the process.

The complete Public Engagement Summary: WCPSS 2025-2026 School Enrollment Plan report is included in the Board agenda attachments.

Seagroves Farm

Response/ Rationale for Recommendation:

- **Current and Projected Enrollment at Baucom:** Baucom Elementary will be at its capacity limits with the recommendations already included in the plan to take advantage of the newly available capacity at their renovated school.
- **Why Not Apex Elementary?** While families have suggested Apex Elementary as an alternative, it is also at capacity. Apex recently had its enrollment cap removed, but projected development within its current base area will continue to increase enrollment over the next several years, making it unsustainable to add additional students at this time.
- **Reassignment to Penny Road:** The proposed reassignment to Penny Road Elementary is necessary to balance enrollments across schools and avoid overcrowding at both Baucom and Apex, ensuring that students have access to the resources and space they need.
- **Support for Stability:** WCPSS is prepared to honor **ALL** stability transfer requests for existing students from these neighborhoods, as this assignment change is from an existing school to another existing school. Allowing these students to stay at Baucom Elementary is an effort to ease the transition.
- **Operational Efficiency:** WCPSS recognizes the importance of school stability and community ties, but effective capacity management is essential to meeting the needs of all students in the region.

The complete Public Engagement Summary: WCPSS 2025-2026 School Enrollment Plan report is included in the Board agenda attachments.

Preparation of the Annual Enrollment Plan

1

Presentation of the Annual Membership Forecast (1-year and 10-year projections)

2

Review of Projected Crowding for the Next School Year

3

Review of Capital Improvement Plan (CIP) Updates (7-year plan)

4

Preparation of the Annual Enrollment Plan

5

Review and Approval of Capped Schools due to Overcrowding Concerns

6

Review of Options to Address Other School Utilization Concerns

1. Public engagement to capture thoughts and ideas to support the development of the next enrollment plan
2. Review of goals for the next enrollment plan with the Board
3. Presentation of an initial draft of the enrollment plan
4. Public engagement to help families review and understand the recommendations in the initial draft plan
5. Review of public feedback with the Board and presentation of any recommended revisions to the initial draft
6. Public hearing on the draft enrollment plan by the Board
7. Presentation of final draft of the enrollment plan for the Board's review and approval

Today

Final Draft of 2025-2026 School Enrollment Plan

2025-2026 School Enrollment Planning Process



Information & Updates

www.wcpss.net/2025enrollmentproposal

www.wcpss.net/assignmentplanning

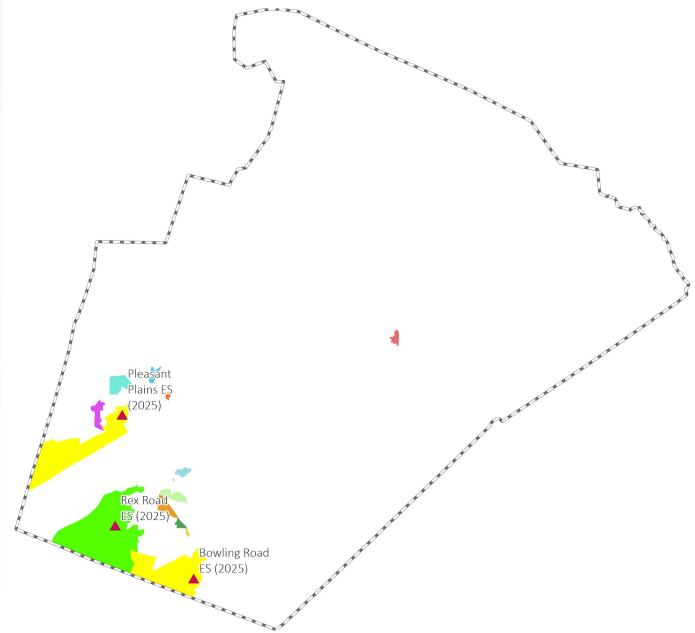
Base School Impacts: *Elementary School*

Sending Schools:

Apex
 Apex Friendship
 Baucom
 Buckhorn Creek
 Fuquay Varina
 Herbert Akins
 Holly Grove
 Holly Ridge
 Holly Springs
 Lincoln Heights Magnet
 Oak Grove
 Olive Chapel
 Salem
 Scotts Ridge
 South Lakes

Receiving Schools:

Baucom - RENOVATED
 Bowling Road - NEW
 Buckhorn Creek
 Herbert Akins
 Holly Grove
 Holly Ridge
 Laurel Park
 Lincoln Heights Magnet
 Penny Road
 Pleasant Plains - NEW
 Powell Magnet
 Rex Road - NEW
 Scotts Ridge



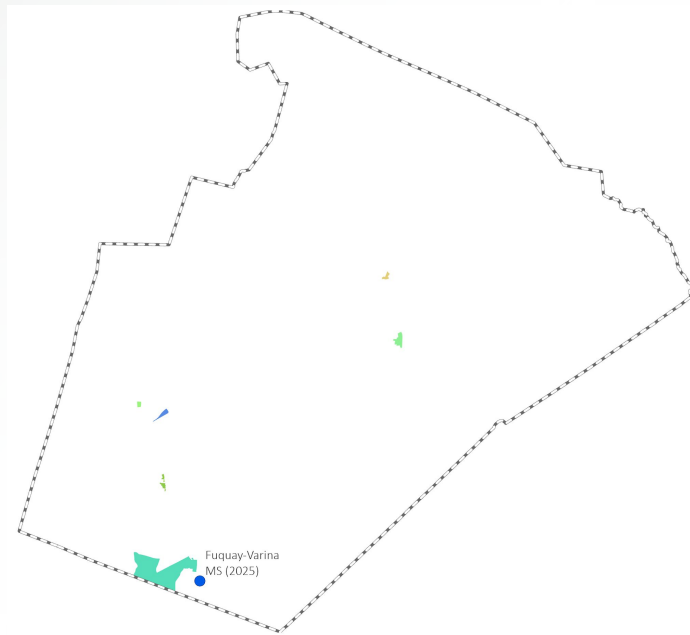
Base School Impacts: *Middle School*

Sending Schools:

Apex
Apex Friendship
Centennial Magnet
Dillard Drive Magnet
Holly Grove
Lufkin Road

Receiving Schools:

Apex
Fuquay-Varina - NEW LOCATION
Holly Ridge
Ligon Magnet
Lufkin Road
West Millbrook Magnet



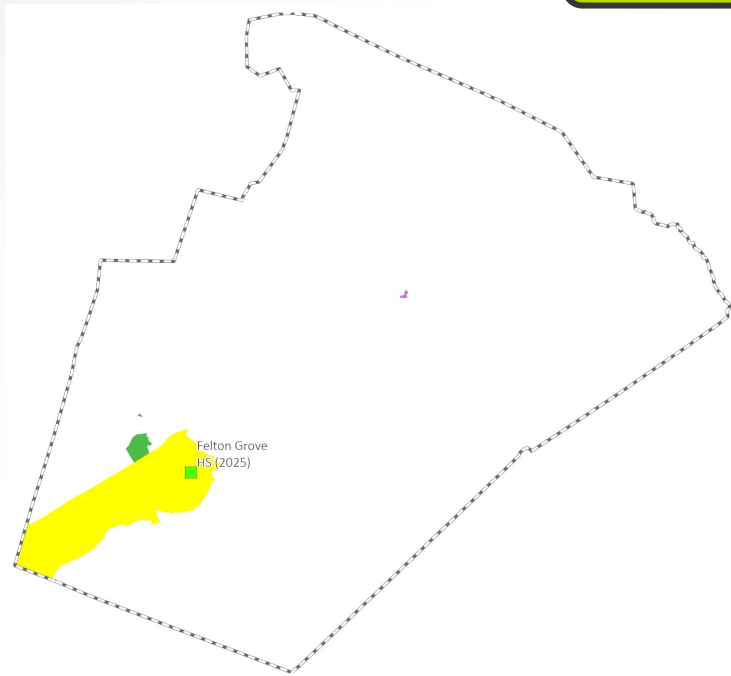
Base School Impacts: *High School*

Sending Schools:

Apex
Apex Friendship
Holly Springs
Southeast Raleigh Magnet

Receiving Schools:

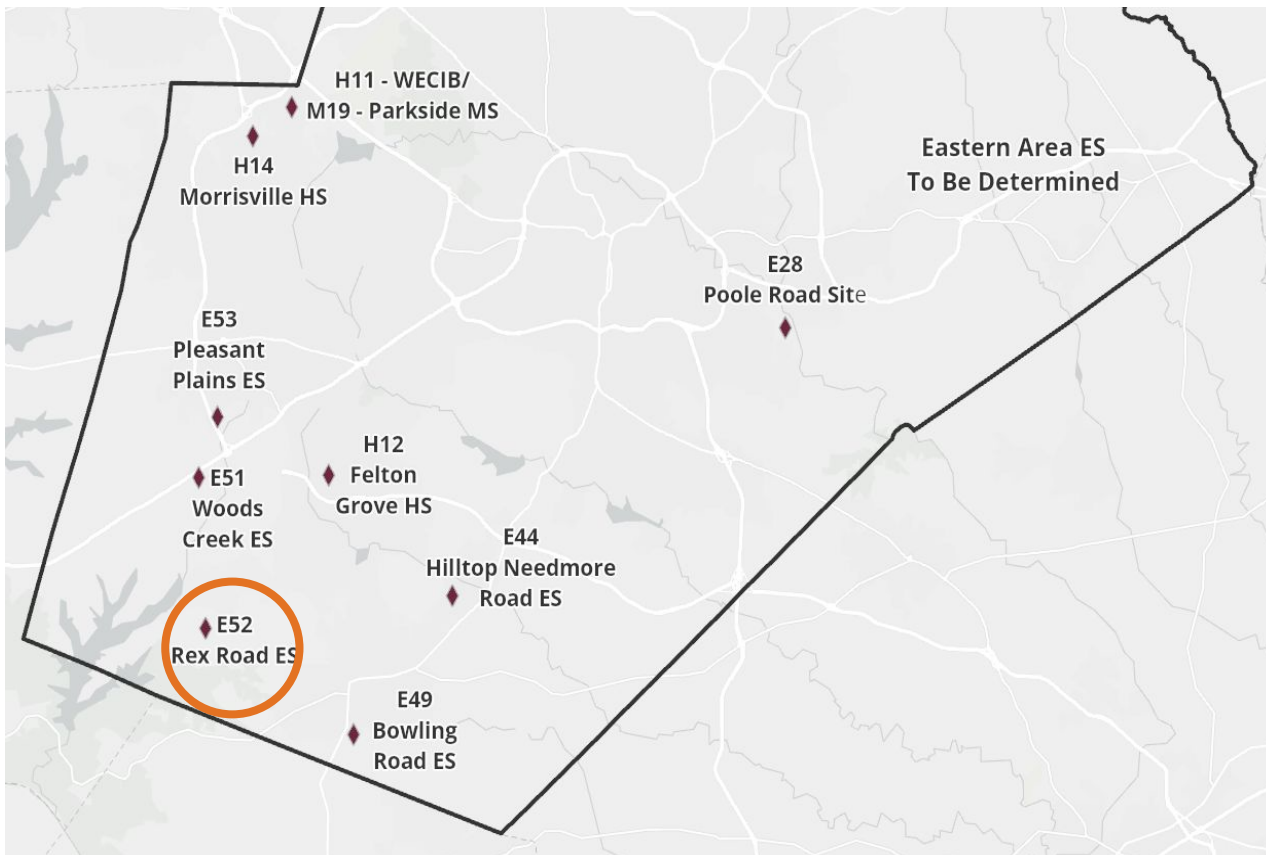
Apex
Felton Grove - NEW
Millbrook Magnet



Recommendations Related to the Opening of New Schools

Rex Road Elementary





New School - Rex Road ES (opening July 2025)

Calendar Recommendation

- Multi-track Year-round, Capacity = 924

Impacted Schools

- Buckhorn Creek ES & Holly Grove ES

2024-25 Base School	Calendar	Capacity w/ Trailers	2025-26 Projected Utilization w/ Trailers	2026-27 Projected Utilization w/ Trailers
Buckhorn Creek ES	Traditional	696	126%	128%
Holly Grove ES	Multi-track Year-round	874	102%	100%

New School - Rex Road ES (opening July 2025)

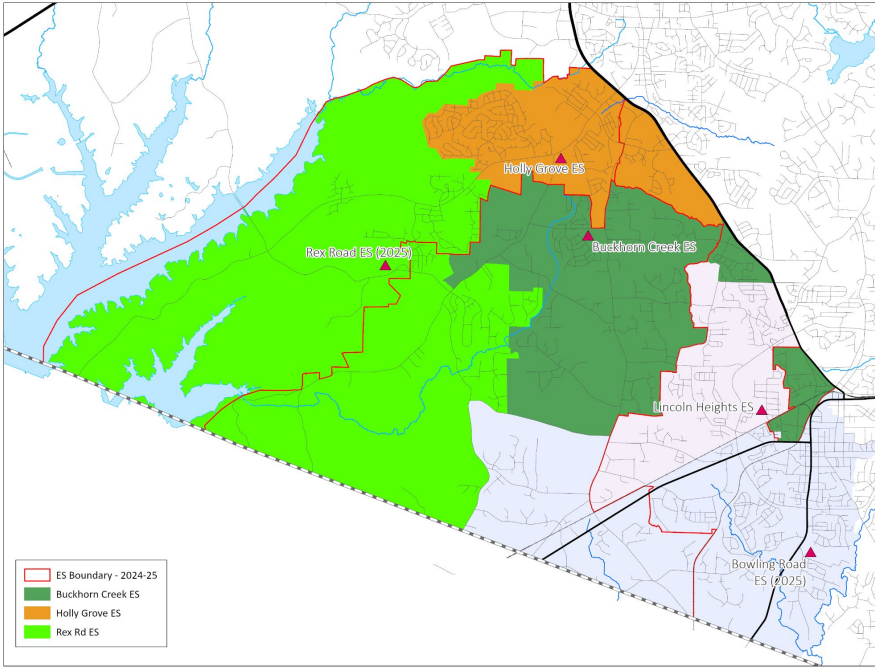
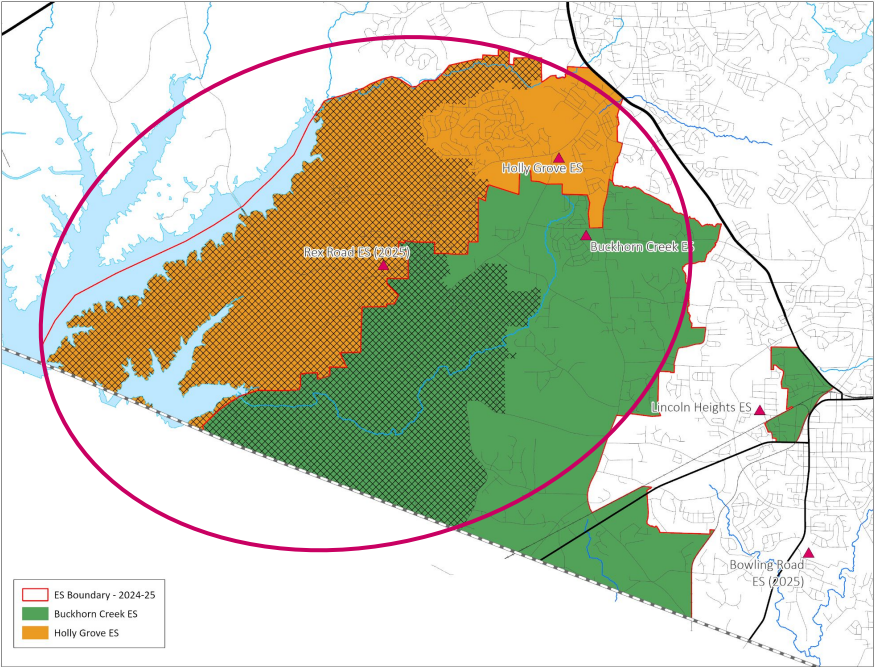
Other Impacted Schools in the Area

- Herbert Akins Road ES, Holly Ridge ES, Holly Springs ES & Lincoln Heights Magnet ES

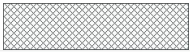
2024-25 Base School	Calendar	Capacity w/ Trailers	2025-26 Projected Utilization w/ Trailers	2026-27 Projected Utilization w/ Trailers
Herbert Akins Road ES	Multi-track Year-round	916	106%	106%
Holly Ridge ES	Traditional	648	112%	110%
Holly Springs ES	Multi-track Year-round	896	84%	83%
Lincoln Heights Magnet ES	Traditional	508	125%	126%

New School - Rex Road ES

Review



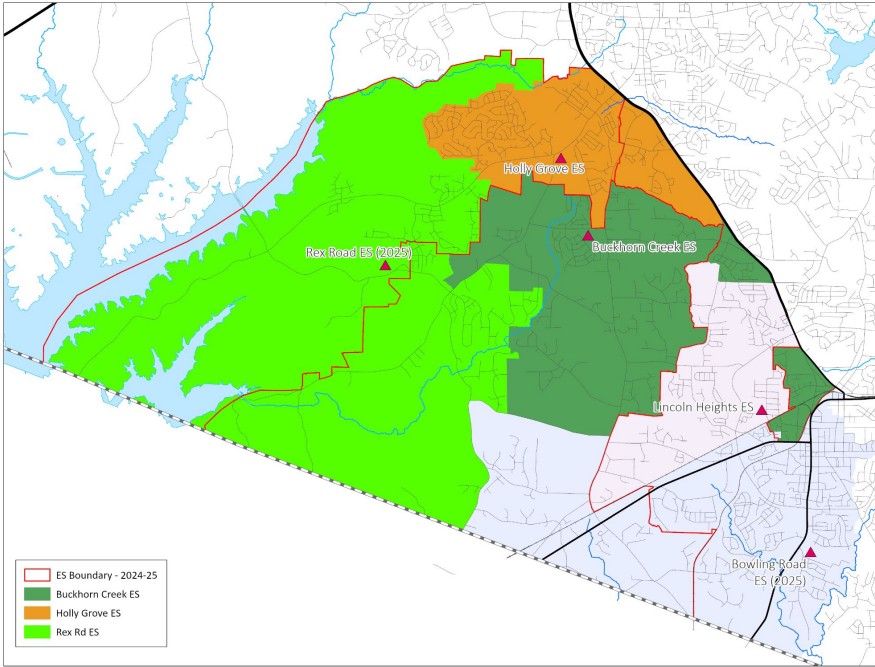
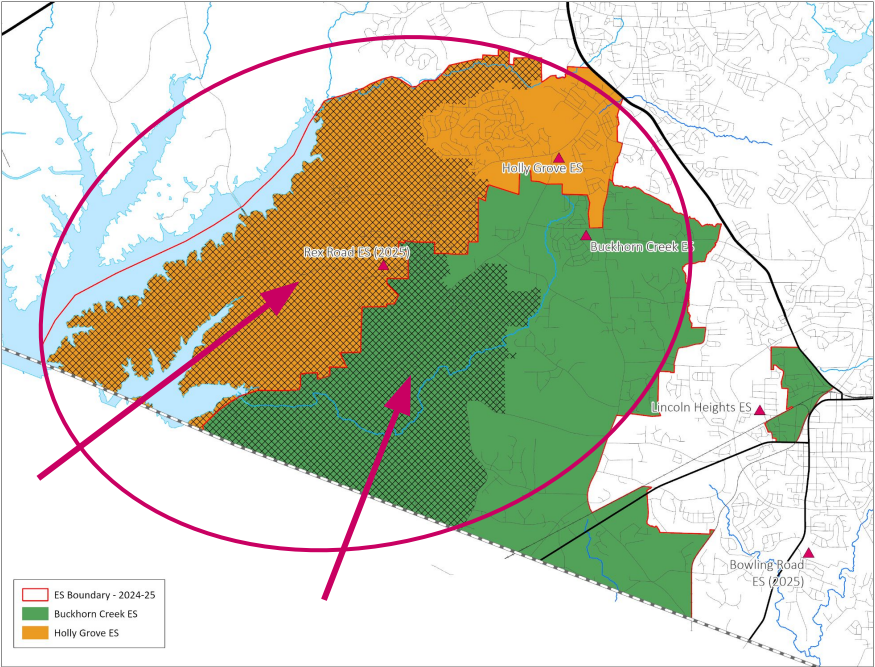
Impacted Areas:



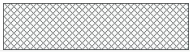
Proposed Base Areas

New School - Rex Road ES

Review



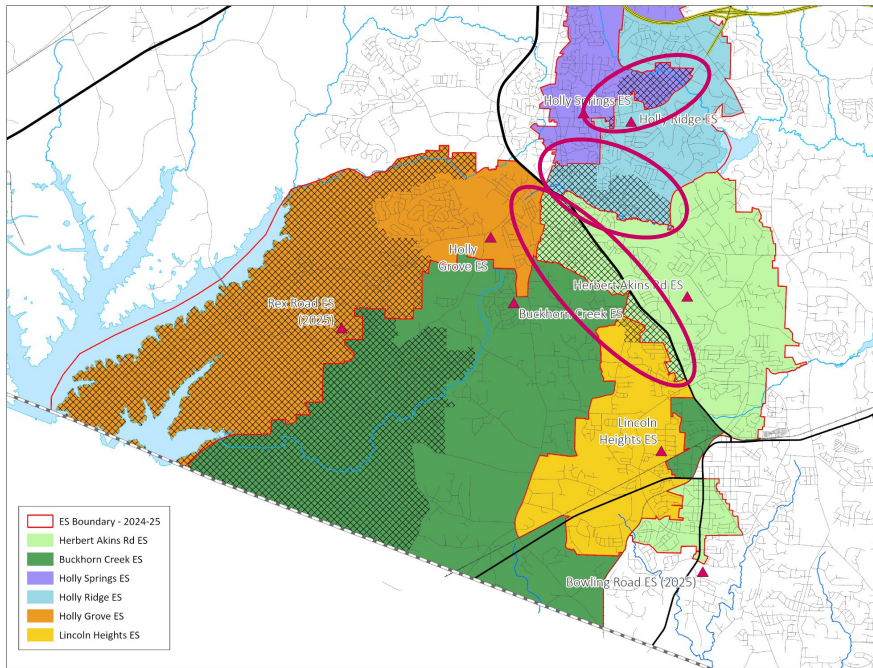
Impacted Areas:



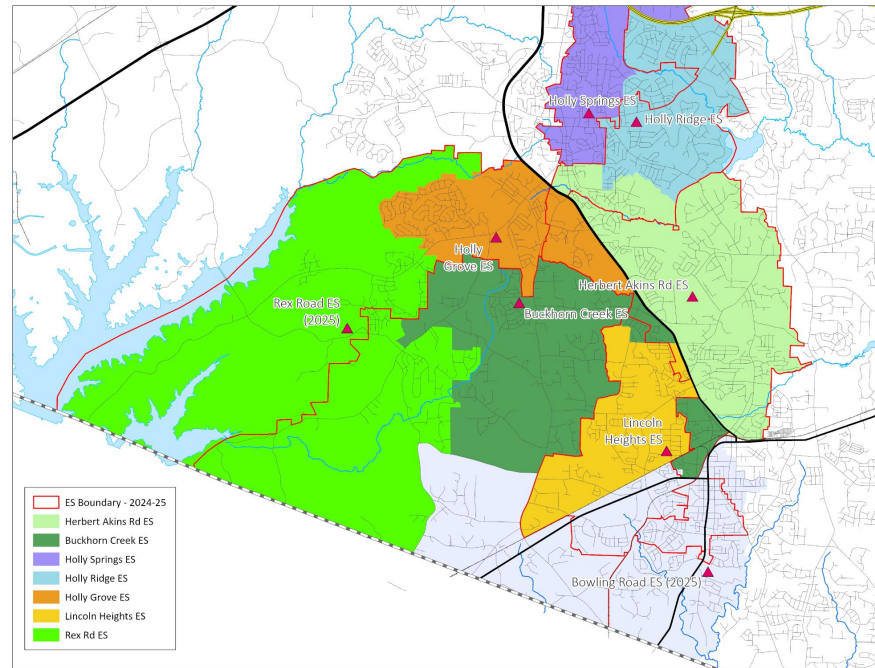
Proposed Base Areas

Existing Schools - Buckhorn Creek ES, Herbert Akins Road ES, Holly Grove ES, Holly Ridge ES & Lincoln Heights Magnet ES (from Herbert Akins ES, Holly Ridge ES, Holly Springs ES & Lincoln Heights Magnet ES)

Review



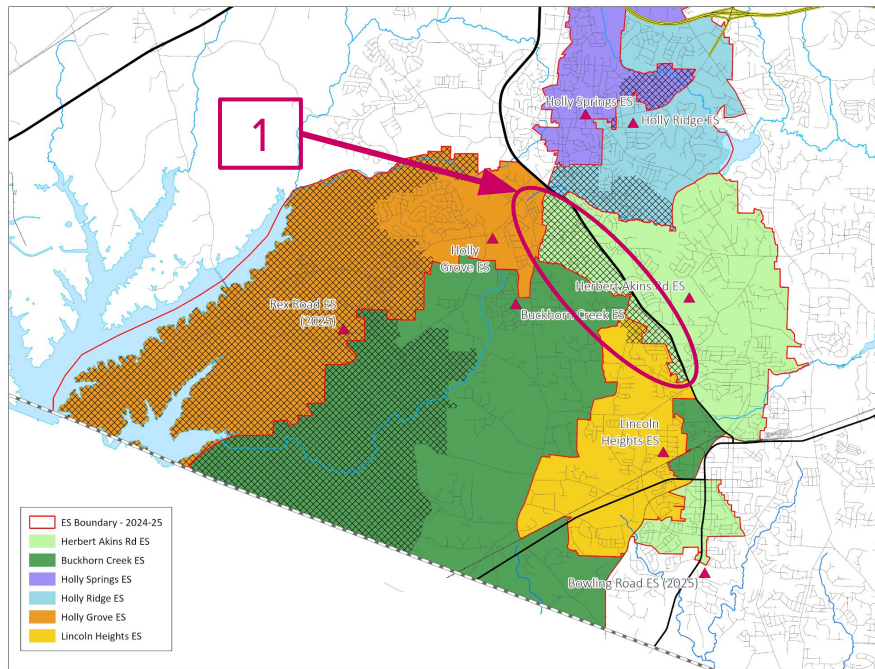
Impacted Areas:



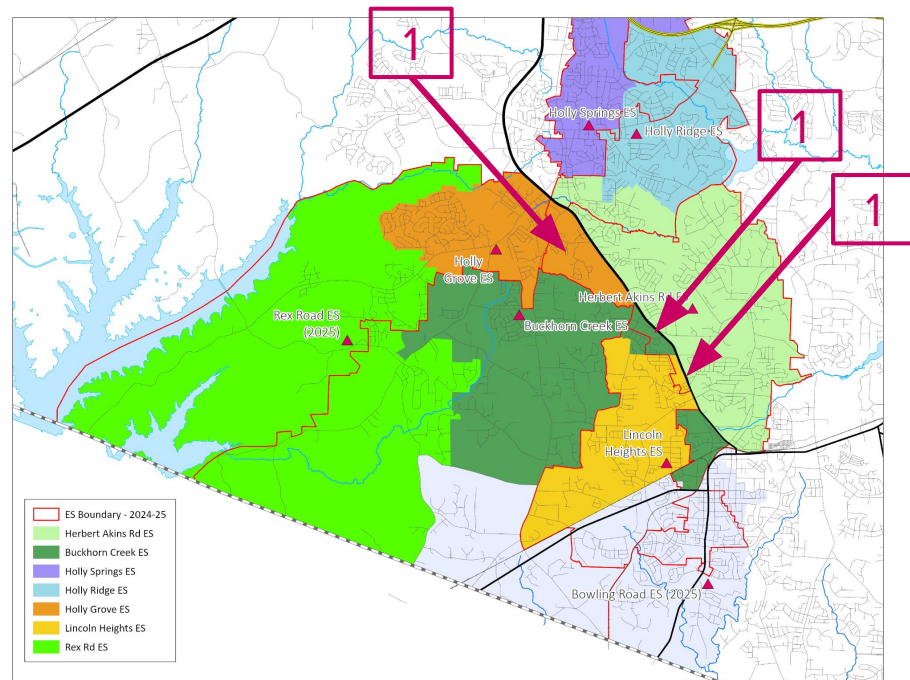
Proposed Base Areas

Existing Schools - Buckhorn Creek ES, Herbert Akins Road ES, Holly Grove ES, Holly Ridge ES & Lincoln Heights Magnet ES (from Herbert Akins ES, Holly Ridge ES, Holly Springs ES & Lincoln Heights Magnet ES)

Review



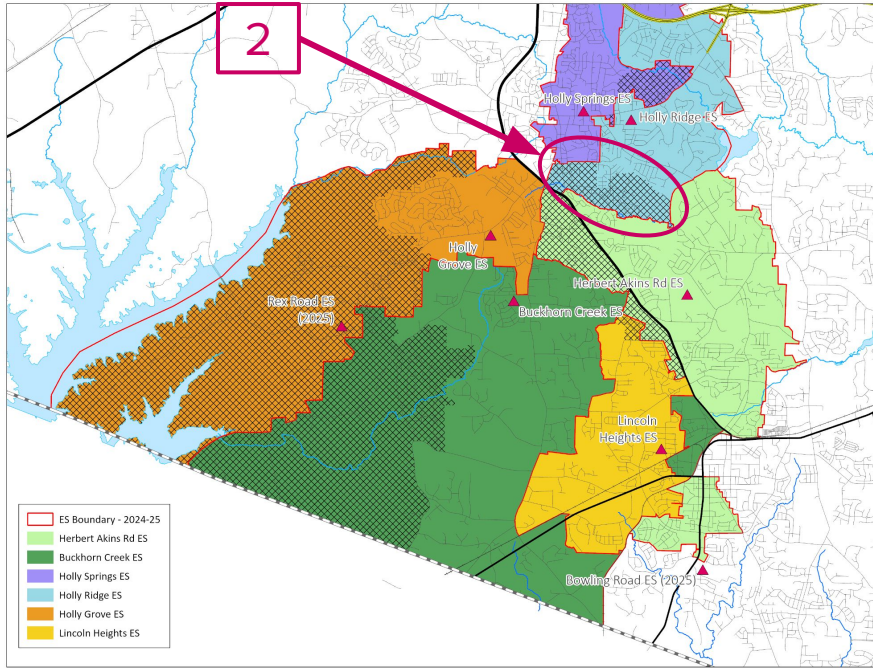
Impacted Areas:



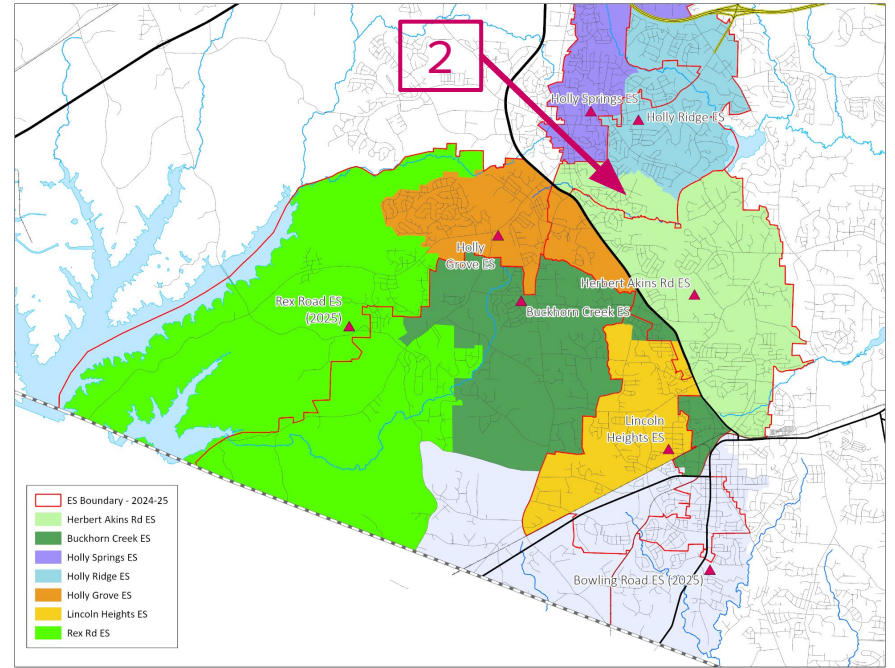
Proposed Base Areas

Existing Schools - Buckhorn Creek ES, Herbert Akins Road ES, Holly Grove ES, Holly Ridge ES & Lincoln Heights Magnet ES (from Herbert Akins ES, Holly Ridge ES, Holly Springs ES & Lincoln Heights Magnet ES)

Review



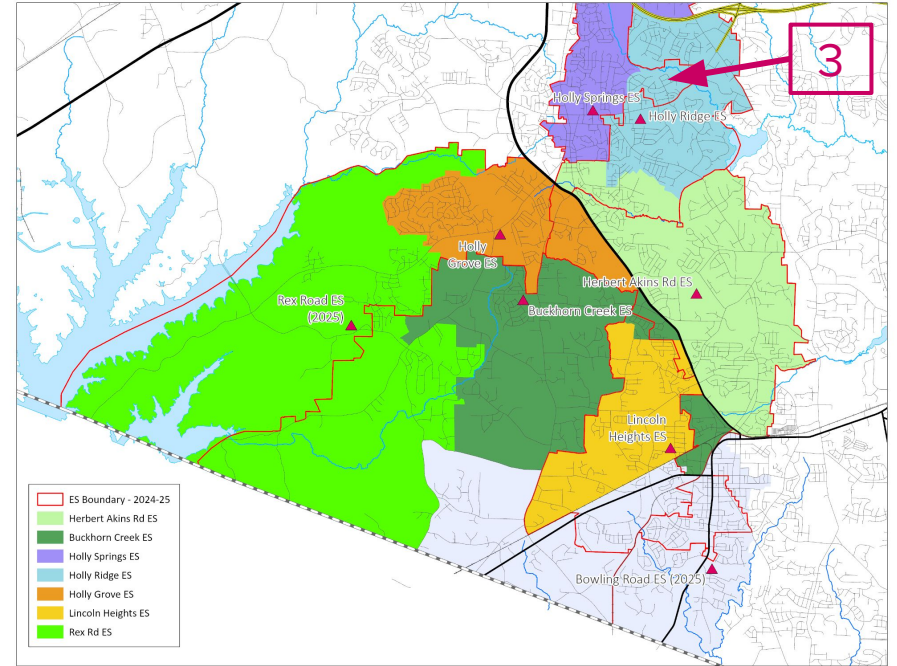
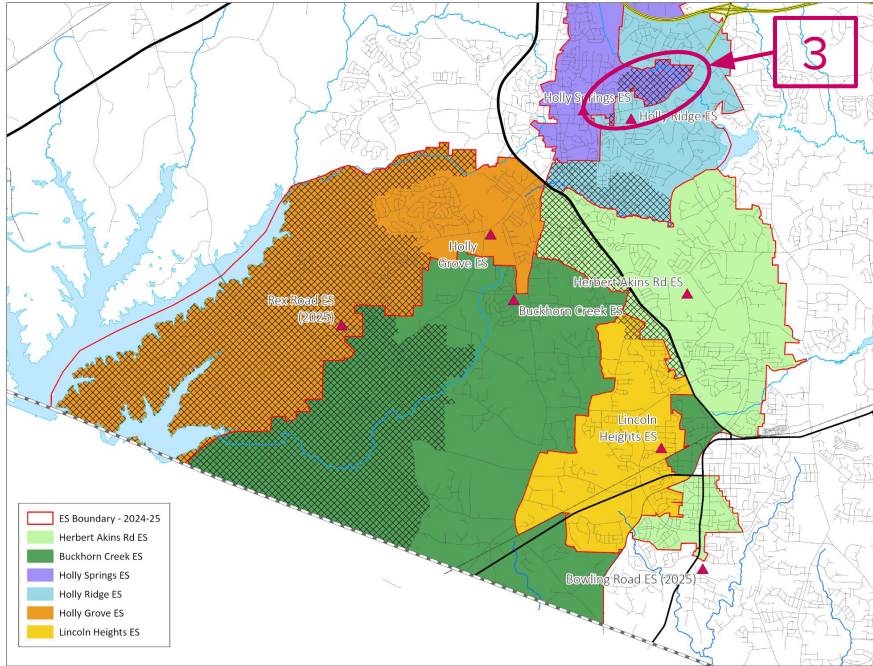
Impacted Areas:



Proposed Base Areas

Existing Schools - Buckhorn Creek ES, Herbert Akins Road ES, Holly Grove ES, Holly Ridge ES & Lincoln Heights Magnet ES (from Herbert Akins ES, Holly Ridge ES, Holly Springs ES & Lincoln Heights Magnet ES)

Review



Impacted Areas:



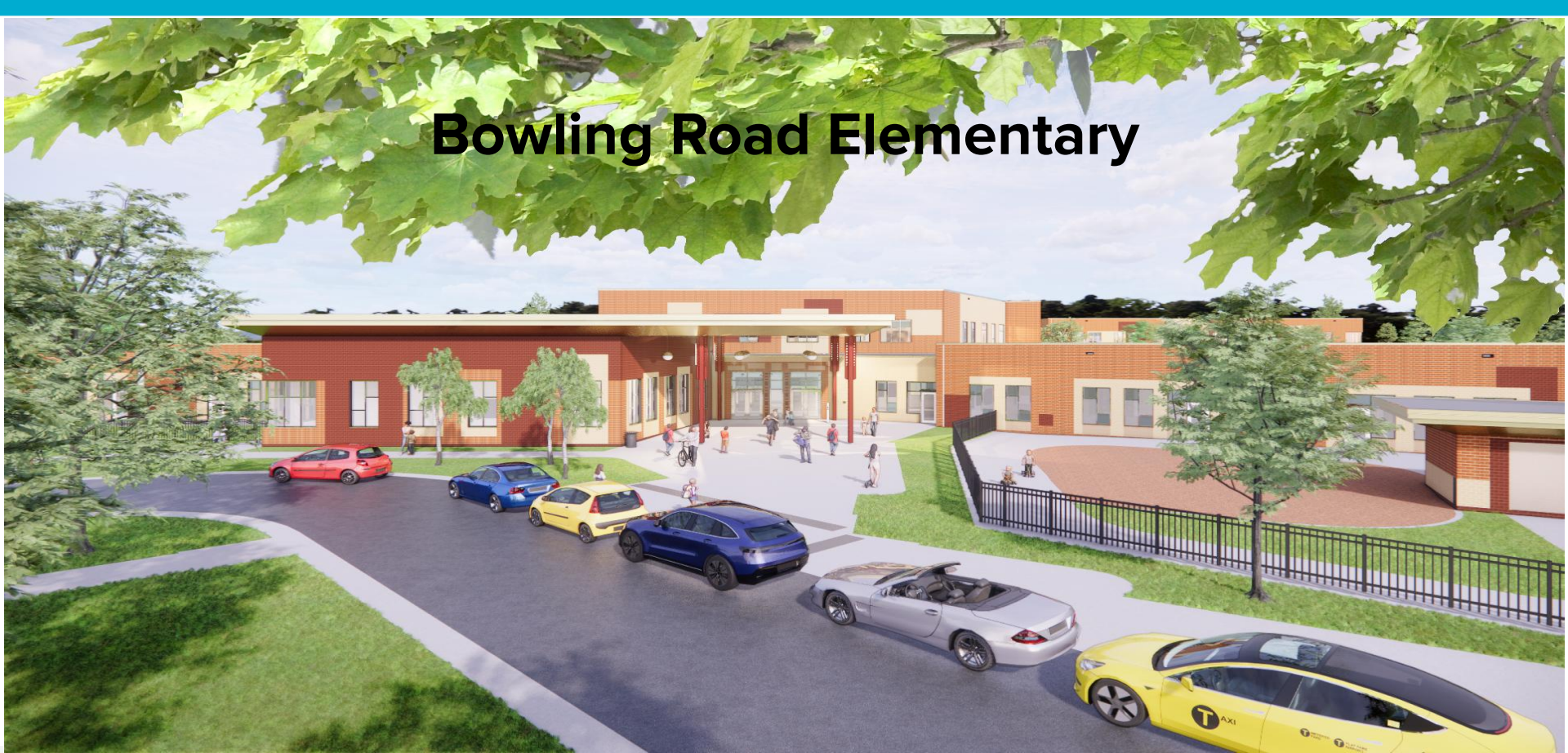
Proposed Base Areas

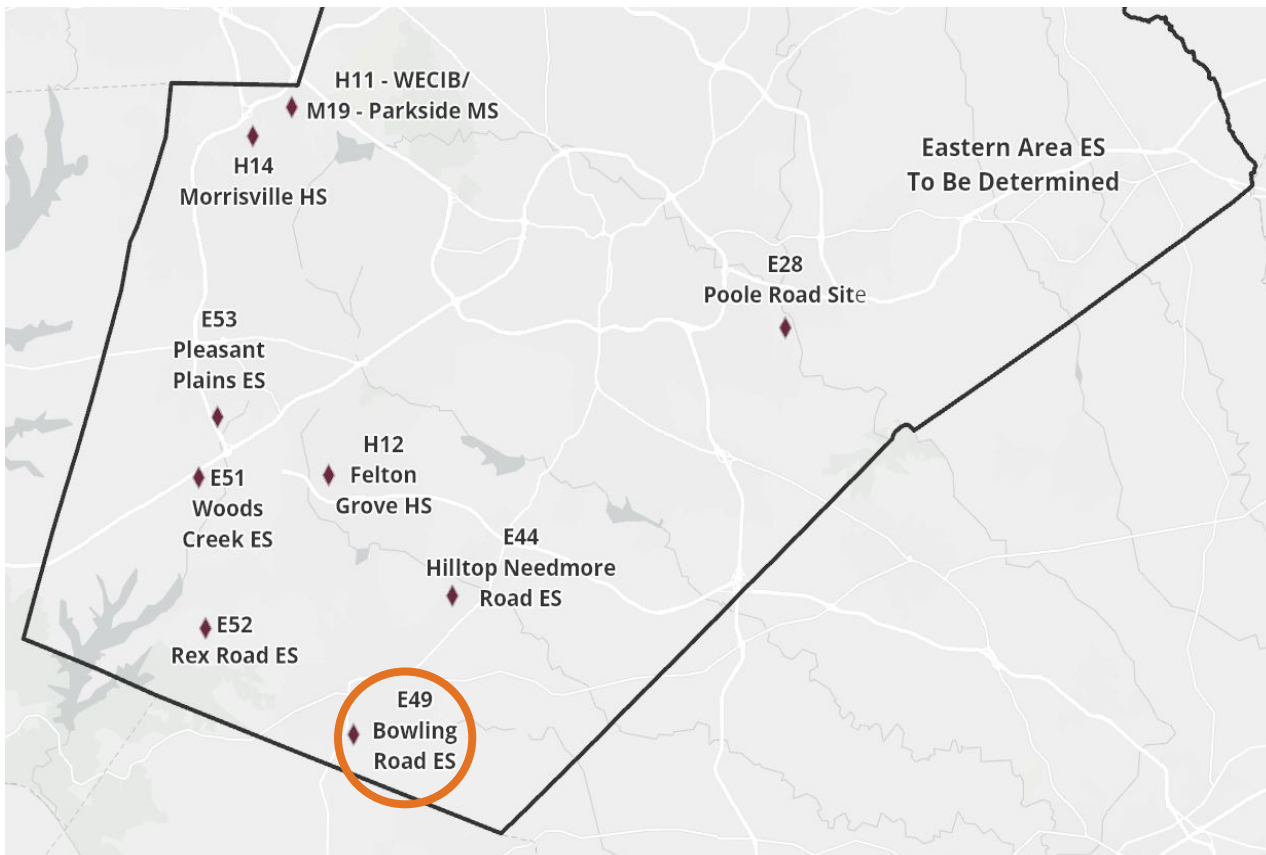
New School - Rex Road ES & Existing Schools

Buckhorn Creek ES, Herbert Akins Road ES, Holly Grove ES & Holly Ridge ES (from Herbert Akins Road ES, Holly Ridge ES, Holly Springs ES & Lincoln Heights Magnet ES)

2025-26 Base School	Calendar	Capacity w/ Trailers	2025-26 Projected Utilization w/ Trailers	2026-27 Projected Utilization w/ Trailers
Buckhorn Creek ES	Traditional	696	89%*	90%*
Herbert Akins Road ES	Multi-track Year-round	916	94%*	95%*
Holly Grove ES	Multi-track Year-round	874	83%	81%
Holly Ridge ES	Traditional	648	100%	97%
Holly Springs ES	Multi-track Year-round	896	78%	77%
Lincoln Heights Magnet ES	Traditional	508	88%*	90%*
Rex Road ES	Multi-track Year-round	924	51%	52%

Bowling Road Elementary





New School - Bowling Road ES (opening July 2025)

Calendar Recommendation

- Multi-track Year-round, Capacity = 924

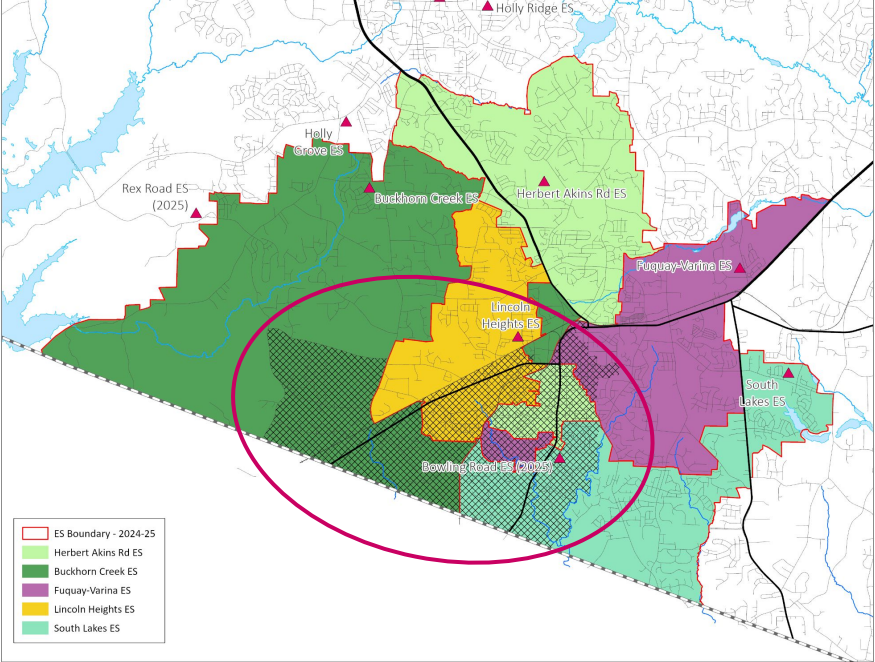
Impacted Schools

- Buckhorn Creek ES, Fuquay-Varina ES, Herbert Akins Road ES, Lincoln Heights Magnet ES & South Lakes ES

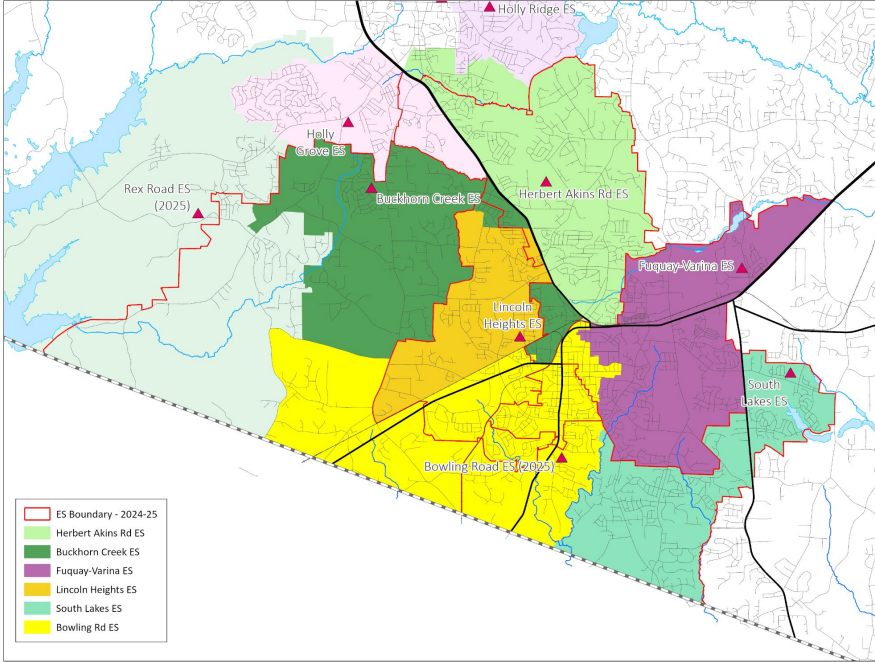
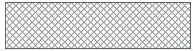
2024-25 Base School	Calendar	Capacity w/ Trailers	2025-26 Projected Utilization w/ Trailers	2026-27 Projected Utilization w/ Trailers
Buckhorn Creek ES	Traditional	696	126%	128%
Fuquay-Varina ES	Traditional	716	98%	98%
Herbert Akins Road ES	Multi-track Year-round	916	106%	106%
Lincoln Heights Magnet ES	Traditional	508	125%	126%
South Lakes ES	Traditional	716	103%	100%

New School - Bowling Road ES & Existing Schools

Review



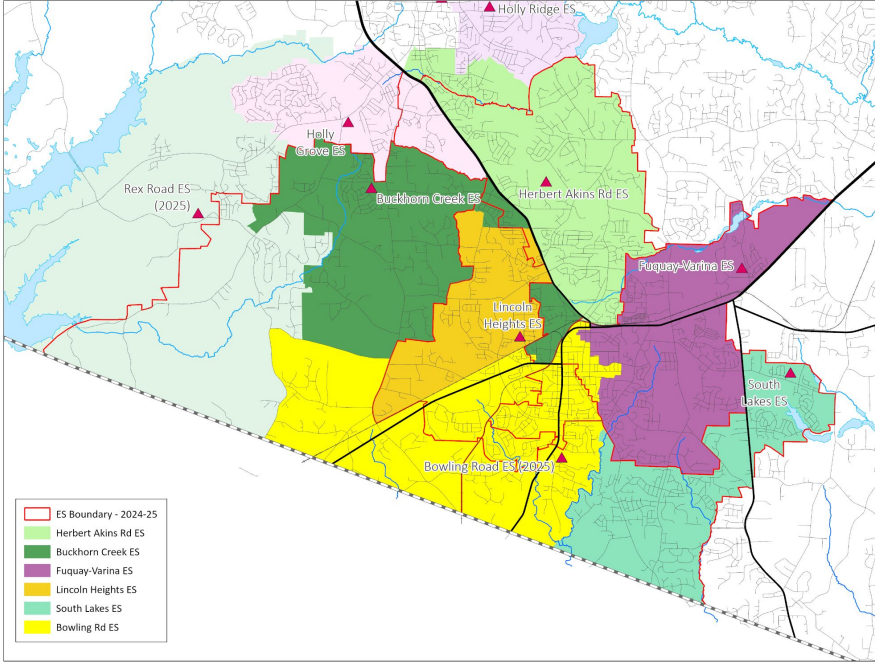
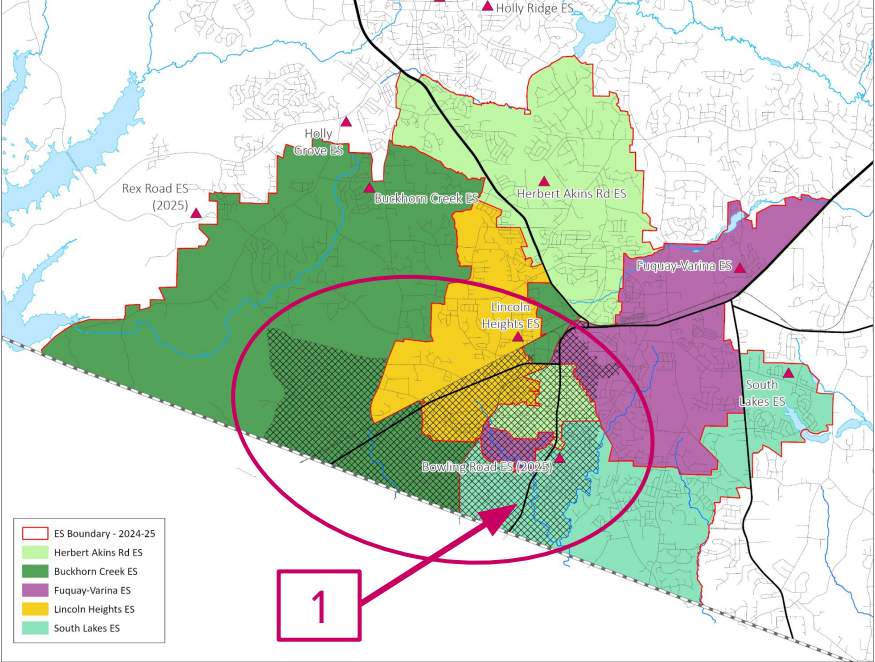
Impacted Areas:



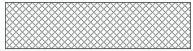
Proposed Base Areas

New School - Bowling Road ES & Existing Schools

Review



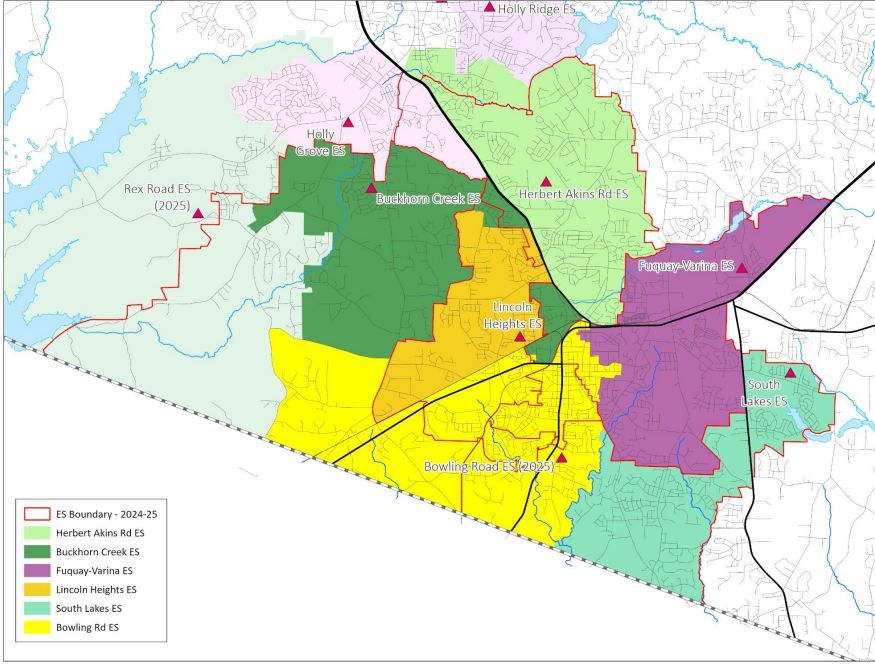
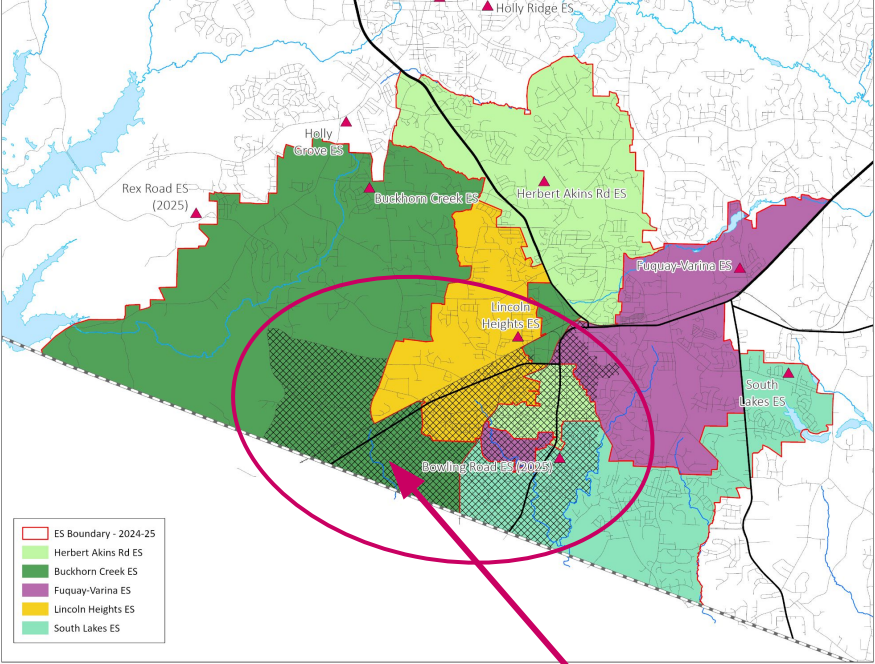
Impacted Areas:



Proposed Base Areas

New School - Bowling Road ES & Existing Schools

Review



Impacted Areas:

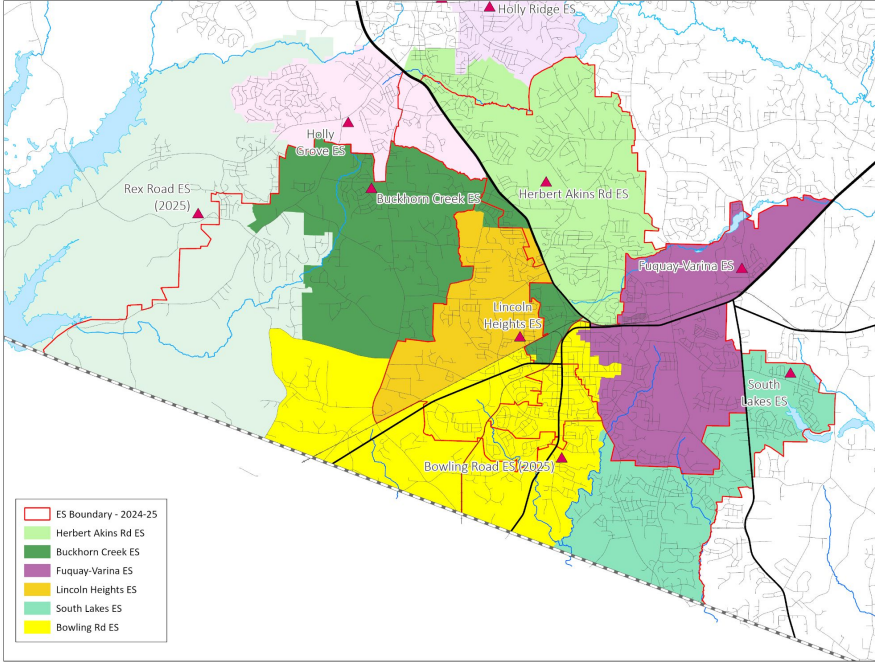
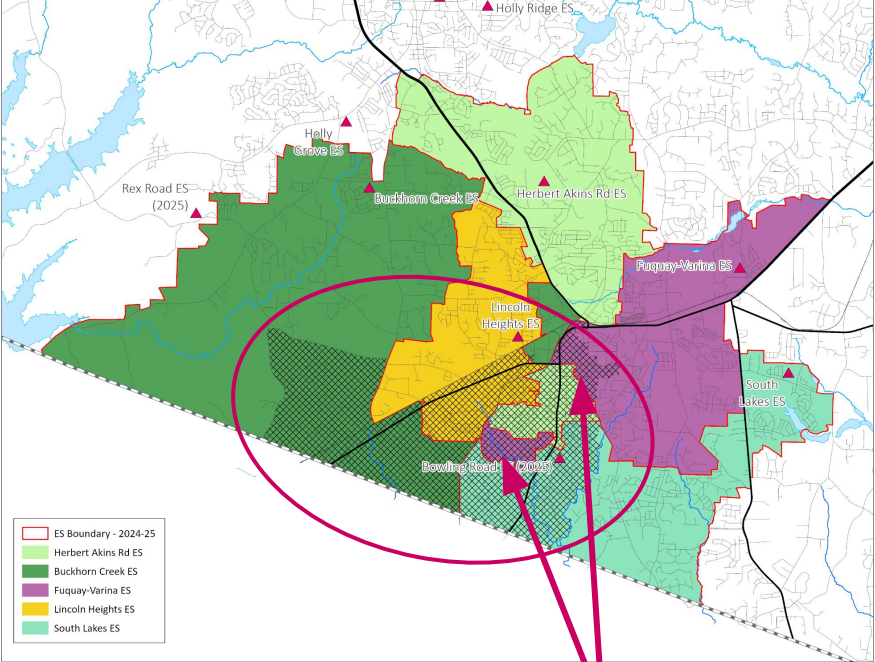


2

Proposed Base Areas

New School - Bowling Road ES & Existing Schools

Review



Impacted Areas:

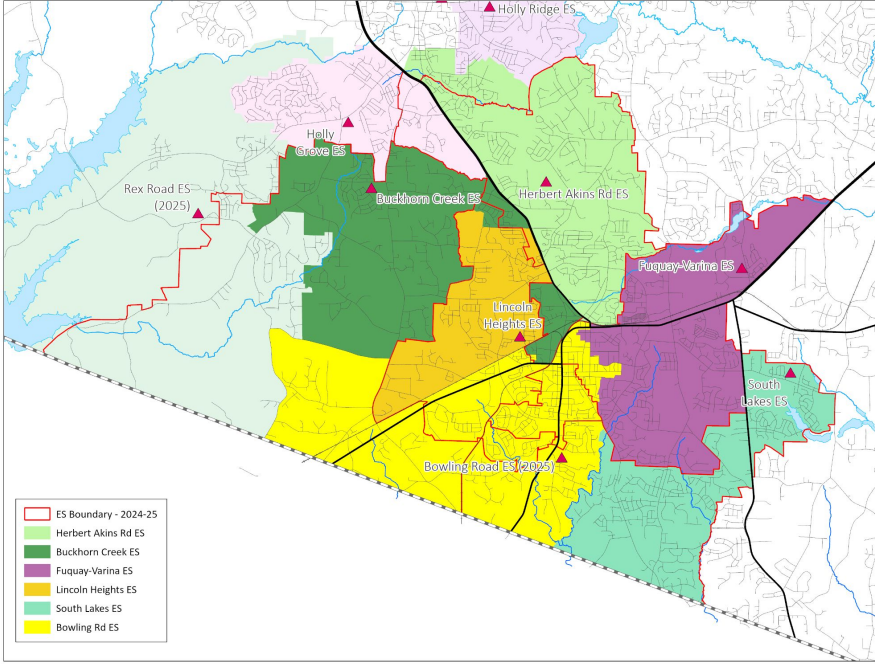
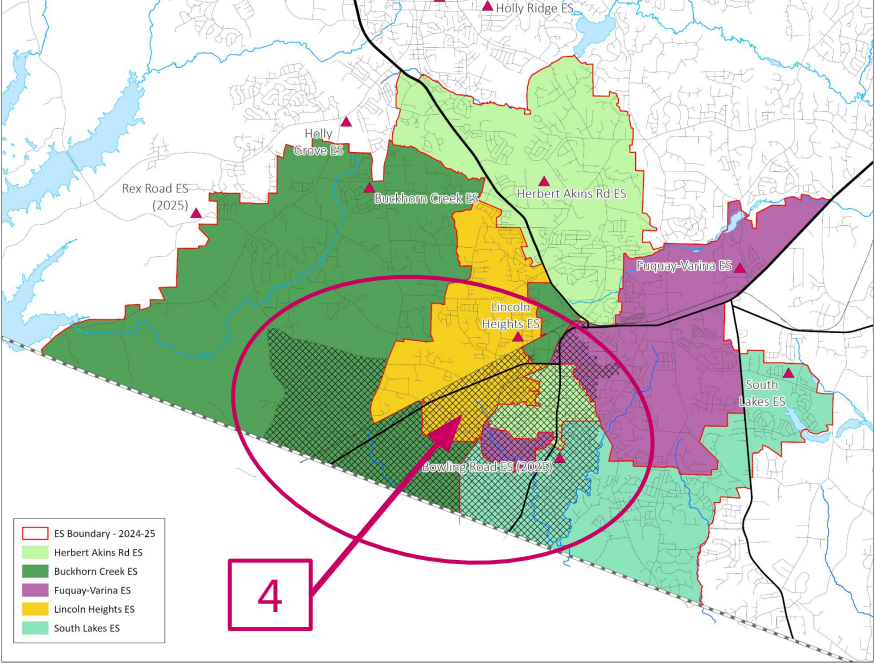


3

Proposed Base Areas

New School - Bowling Road ES & Existing Schools

Review

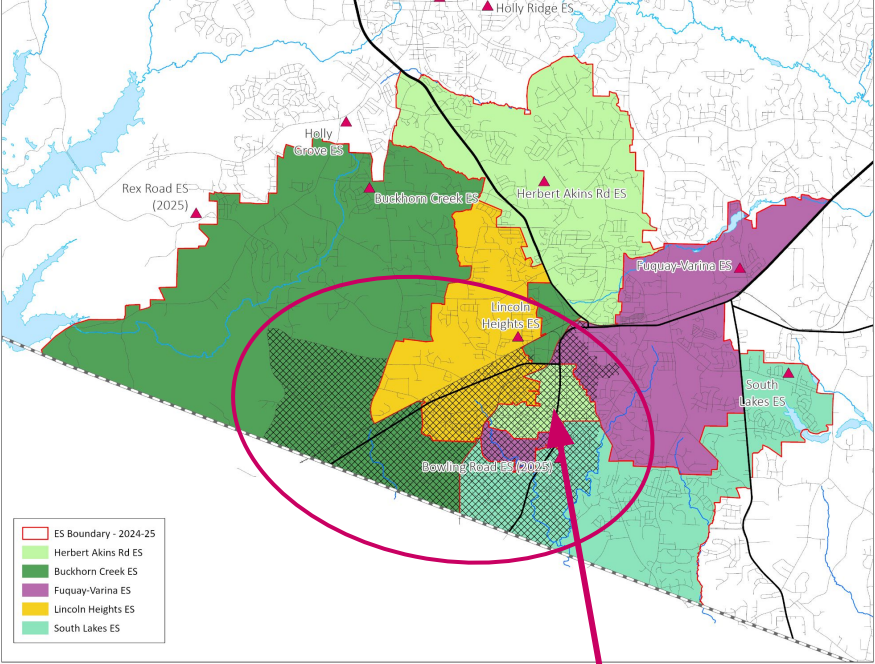


Impacted Areas: 

Proposed Base Areas

New School - Bowling Road ES & Existing Schools

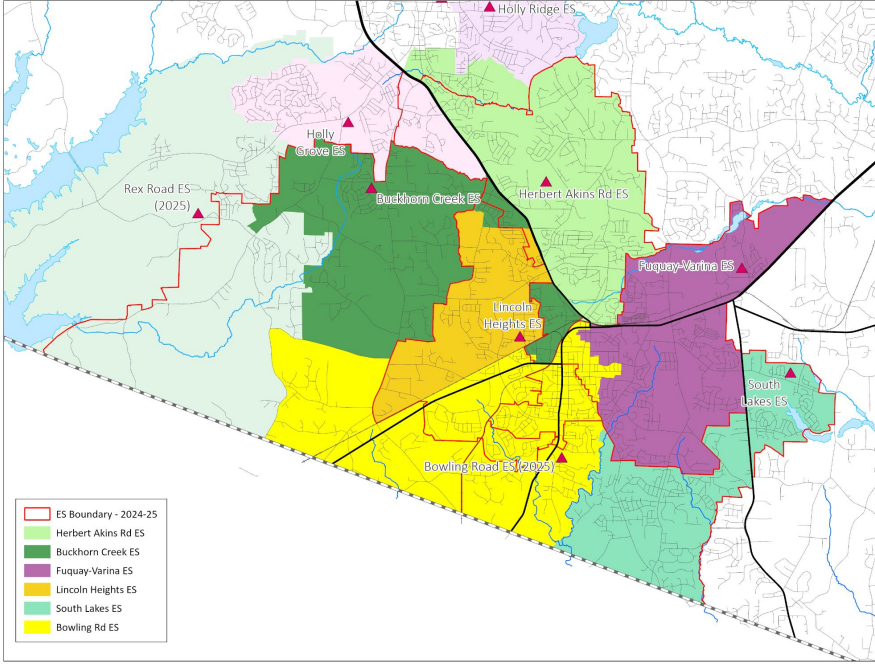
Review



Impacted Areas:



5



Proposed Base Areas

New School - Bowling Road ES & Existing Schools

Review

Buckhorn Creek ES, Herbert Akins Road ES, & Lincoln Heights Magnet ES (from Herbert Akins ES, Holly Ridge ES & Lincoln Heights Magnet ES)

2025-26 Base School	Calendar	Capacity w/ Trailers	2025-26 Projected Utilization w/ Trailers	2026-27 Projected Utilization w/ Trailers
Buckhorn Creek ES	Traditional	696	89%*	90%*
Fuquay-Varina ES	Traditional	716	84%	85%
Herbert Akins Road ES	Multi-track Year-round	916	94%*	95%*
Lincoln Heights Magnet ES	Traditional	508	88%*	90%*
South Lakes ES	Traditional	716	82%	79%
Bowling Road ES	Multi-track Year-round	924	70%	71%

Fuquay-Varina Middle (NEW Location)



NEW Location/ Existing School - Fuquay-Varina MS

Operating Calendar

- Traditional

NEW Capacity

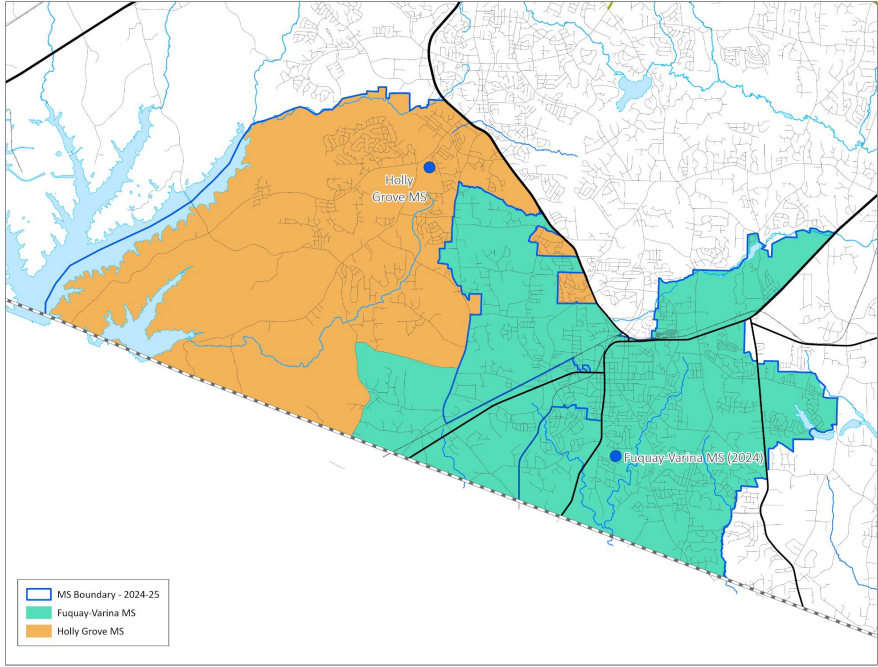
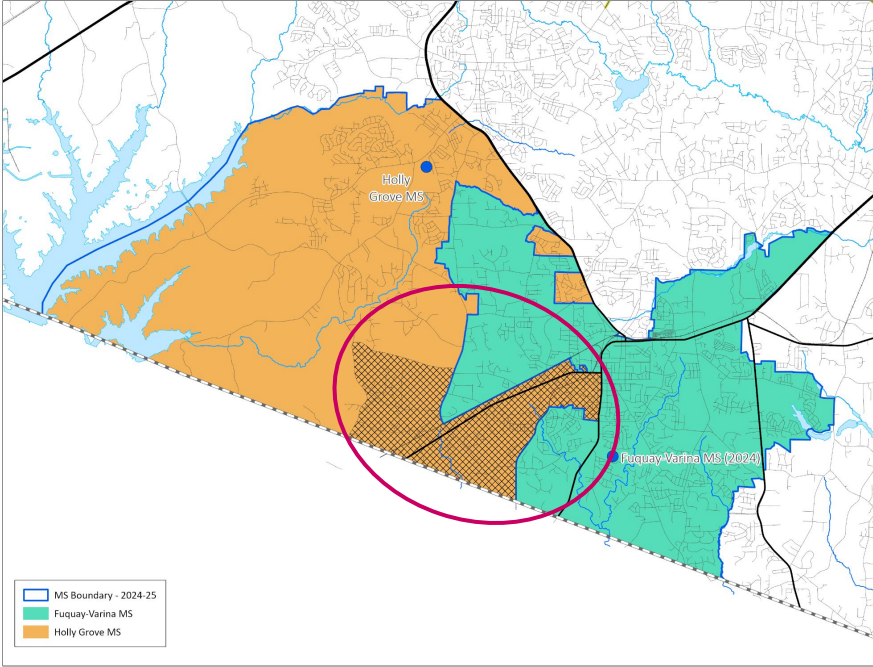
- 1404 (increase from 936 at original location)

Campus Information

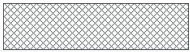
- Bowling Road ES and Fuquay-Varina MS will be located on the same campus

NEW Location/ Existing School - Fuquay-Varina MS (from Holly Grove

Review



Impacted Areas:



Proposed Base Areas

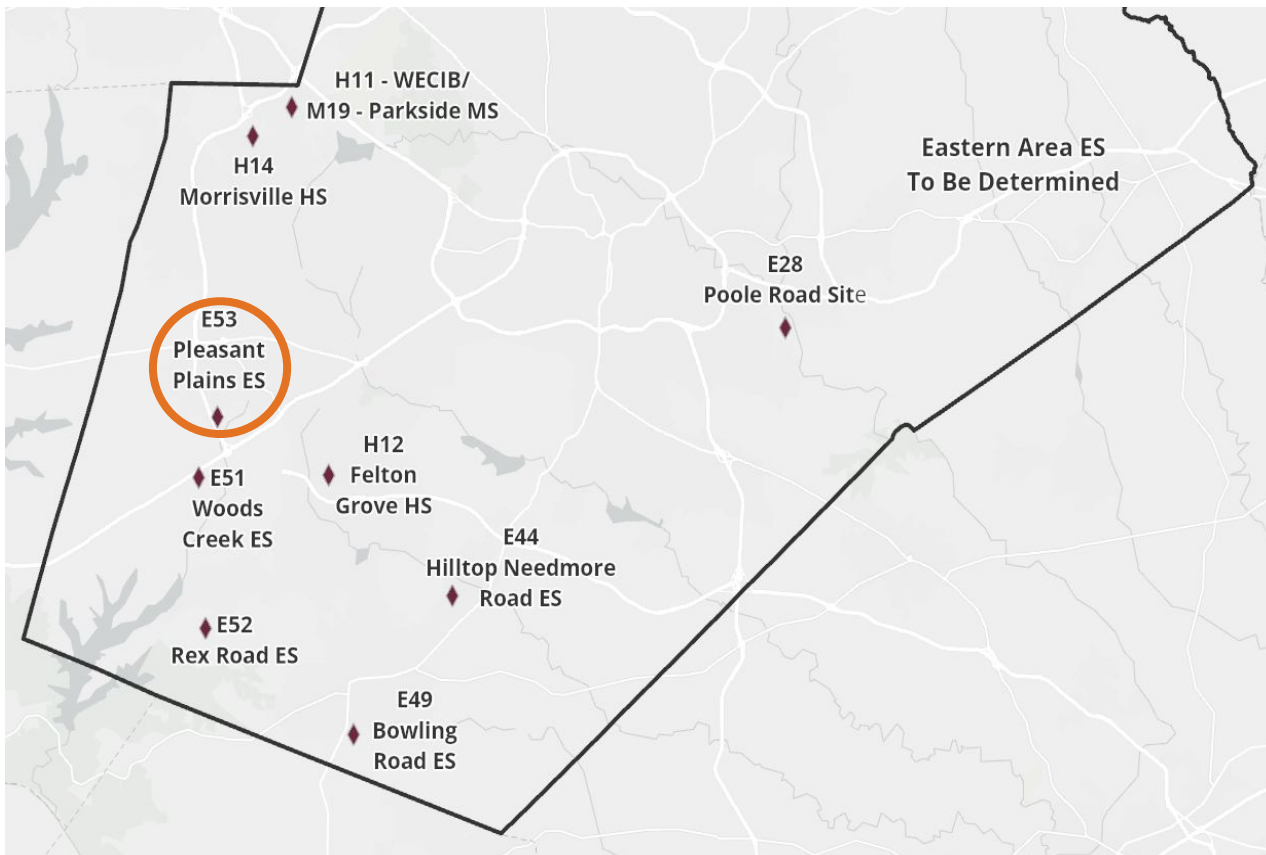
NEW Location/ Existing School - Fuquay-Varina MS (from Holly Grove MS)

2024-25 Base School	Calendar	Capacity w/ Trailers	2025-26 Projected Utilization w/ Trailers	2026-27 Projected Utilization w/ Trailers
Holly Grove MS	Multi-track Year-round	1560	63%	63%
Fuquay-Varina MS	Traditional	1404	71%	72%

2025-26 Base School	Calendar	Capacity w/ Trailers	2025-26 Projected Utilization w/ Trailers	2026-27 Projected Utilization w/ Trailers
Holly Grove MS	Multi-track Year-round	1560	55%	55%
Fuquay-Varina MS	Traditional	1404	80%	81%

Pleasant Plains Elementary





New School - Pleasant Plains ES (opening July 2025)

Calendar Recommendation

- Multi-track Year-round, Capacity = 924

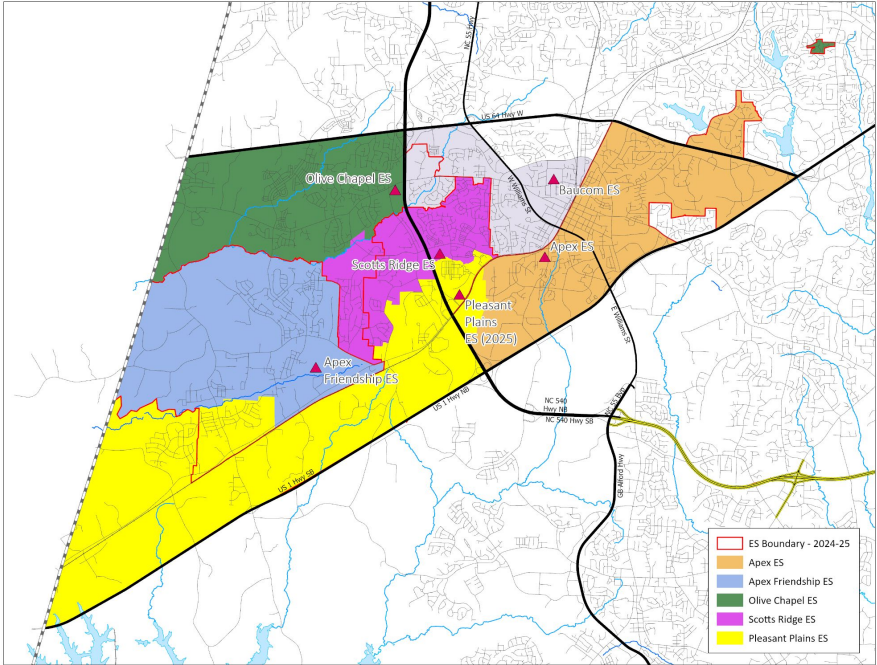
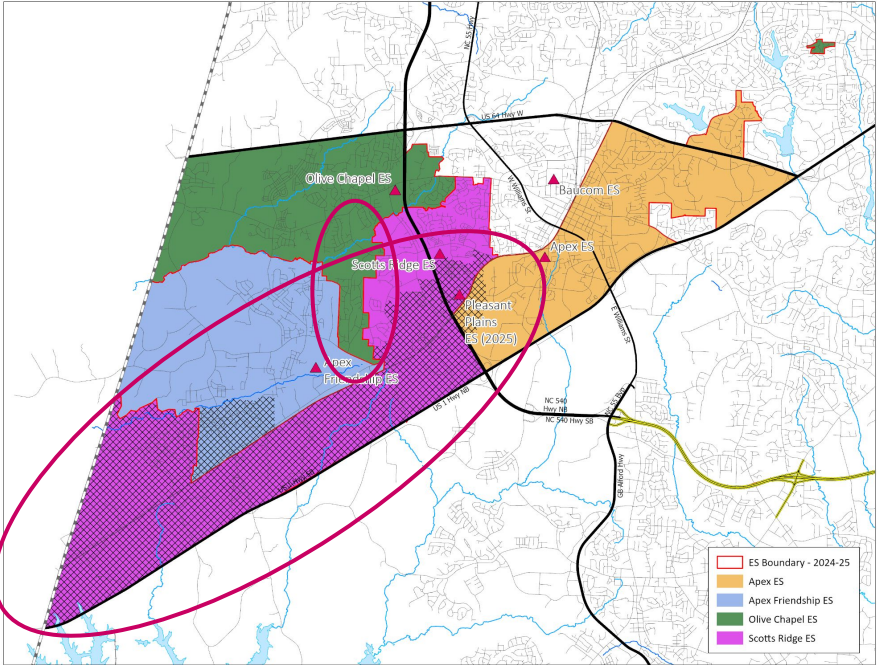
Impacted Schools

- Apex ES, Apex Friendship ES & Scotts Ridge ES (& Olive Chapel ES)

2024-25 Base School	Calendar	Capacity w/ Trailers	2025-26 Projected Utilization w/ Trailers	2026-27 Projected Utilization w/ Trailers
Apex ES	Traditional	588	96%	99%
Apex Friendship ES	Traditional	716	138%	147%
(Olive Chapel ES)	Multi-track Year-round	856	144%	147%
Scotts Ridge ES	Traditional	736	116%	118%

New School - Pleasant Plains ES & Existing Schools

Review



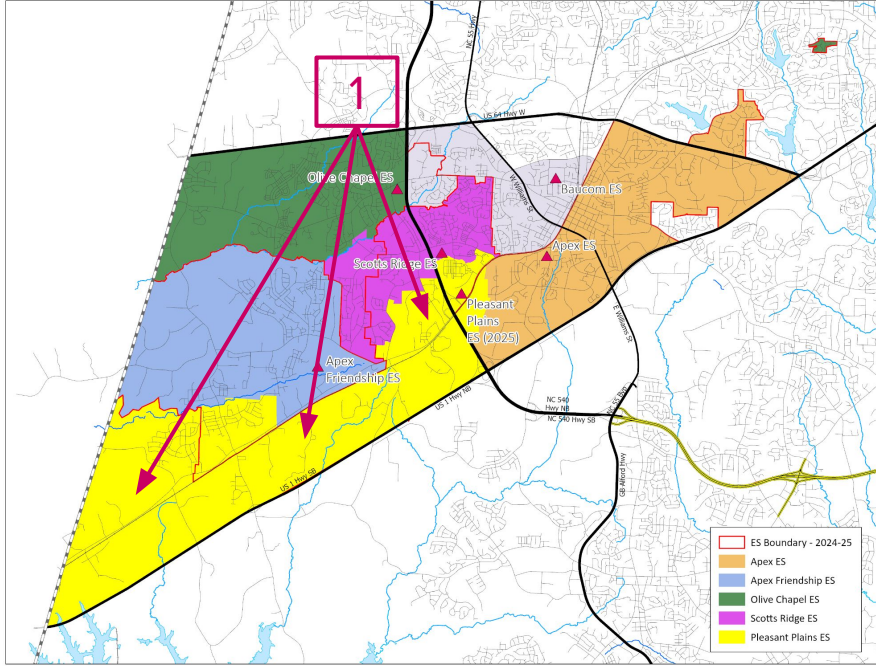
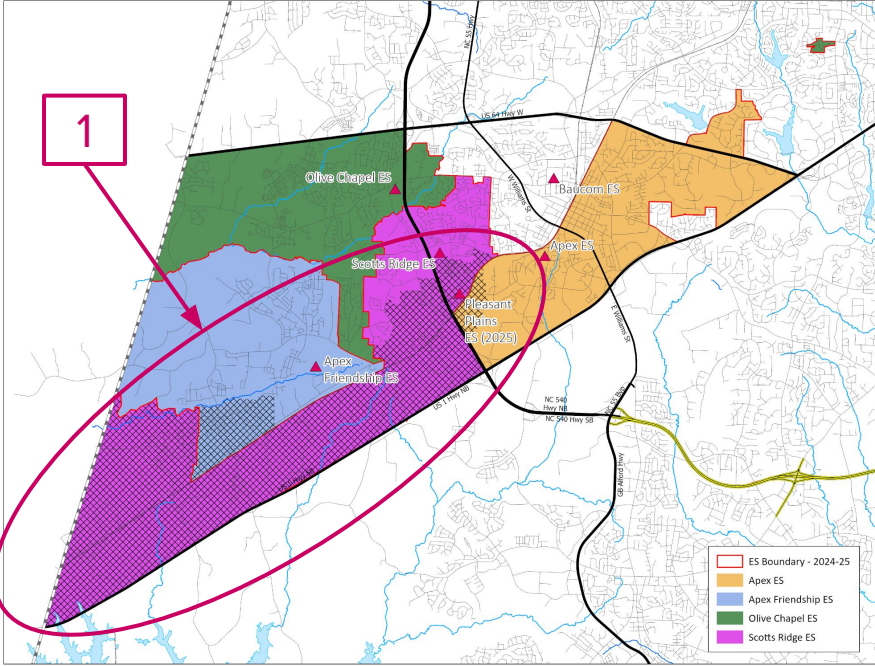
Impacted Areas:



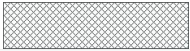
Proposed Base Areas

New School - Pleasant Plains ES & Existing Schools

Review



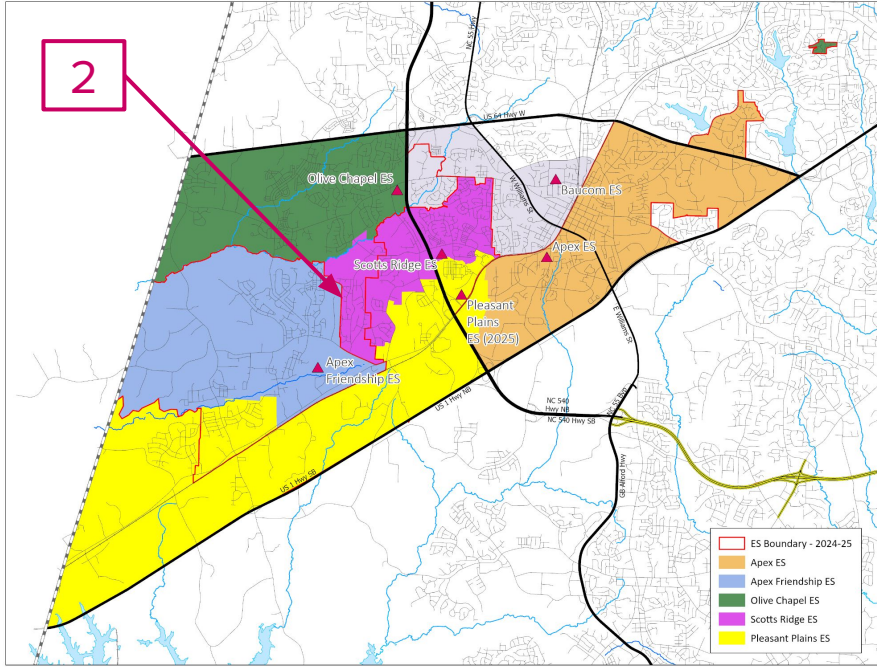
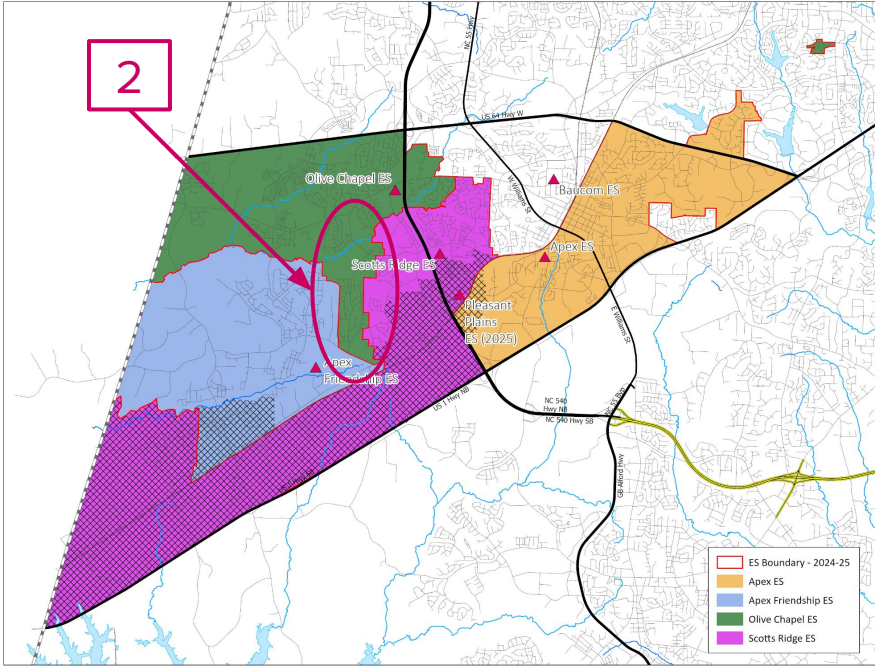
Impacted Areas:



Proposed Base Areas

New School - Pleasant Plains ES & Existing Schools

Review



Proposed Base Areas

New School - Pleasant Plains ES & Existing Schools

Scotts Ridge ES (from Olive Chapel ES)

2025-26 Base School	Calendar	Capacity w/ Trailers	2025-26 Projected Utilization w/ Trailers	2026-27 Projected Utilization w/ Trailers
Apex ES	Traditional	588	96%	99%
Apex Friendship ES	Traditional	716	113%	121%
Olive Chapel ES	Multi-track Year-round	856	119%*	121%*
Scotts Ridge ES	Traditional	736	88%	88%
Pleasant Plains ES	Multi-track Year-round	924	57%	62%

Baucom Elementary (Renovation)



Renovated School - Baucom ES

Operating Calendar

- Traditional

NEW Capacity

- 716 (increase from 508 prior to renovation)

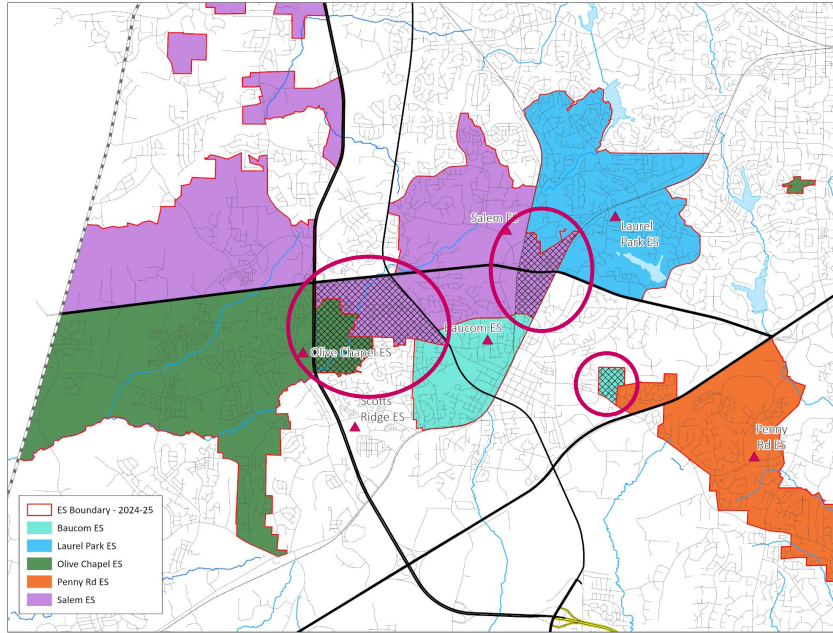
Recommendations to Expand Base Attendance Area

- Provide relief to nearby schools that are capped or projected to be overcrowded

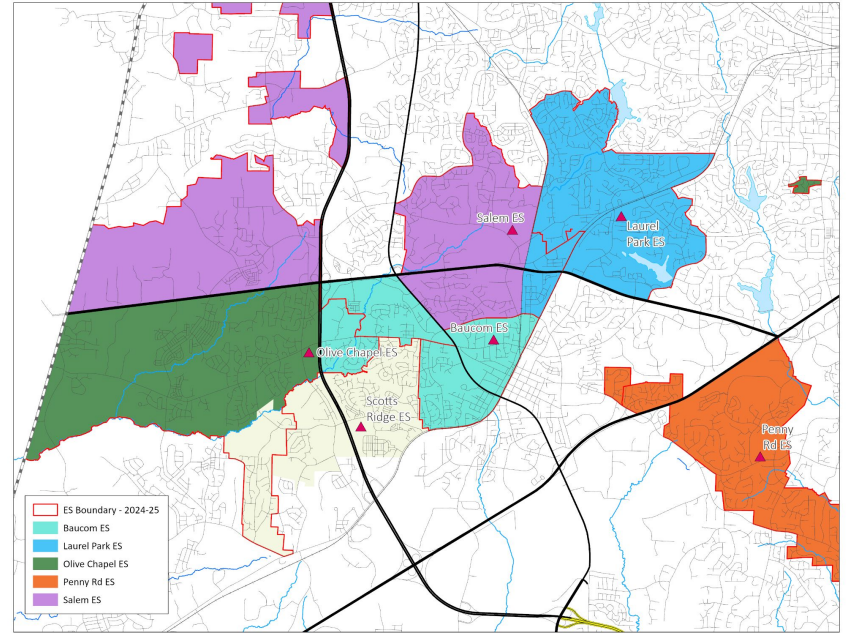
Renovated School - Baucom ES (from Olive Chapel ES & Salem ES)

Existing School - Laurel Park ES & Penny Rd ES (from Baucom Salem ES)

Review



Impacted Areas: 

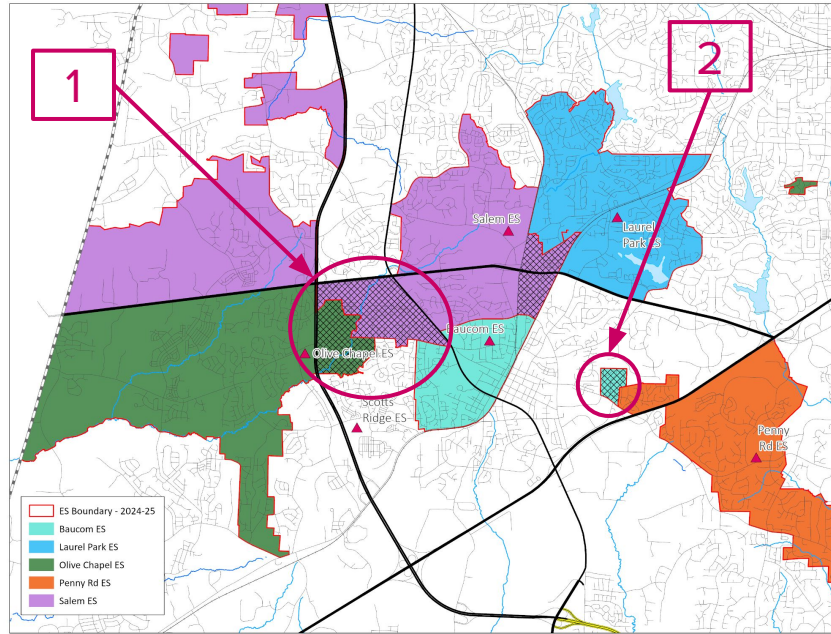


Proposed Base Areas

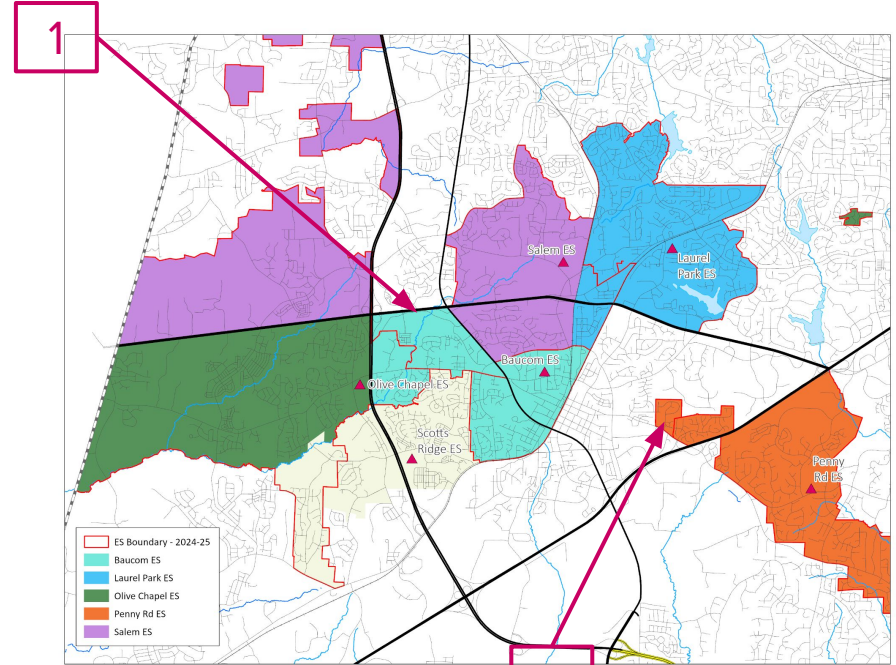
Renovated School - Baucom ES (from Olive Chapel ES & Salem ES)

Existing School - Laurel Park ES & Penny Rd ES (from Baucom ES & Salem ES)

Review



Impacted Areas: 

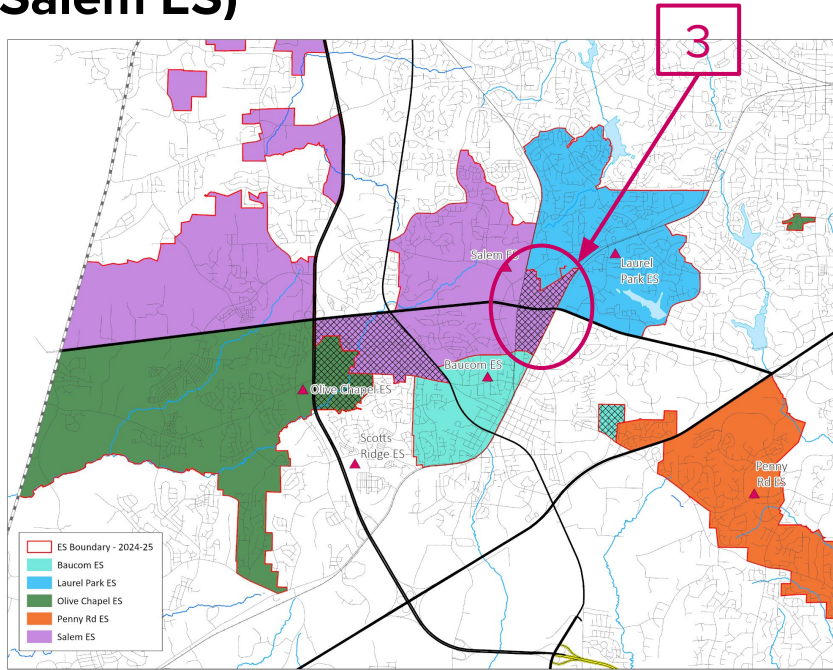


Proposed Base Areas

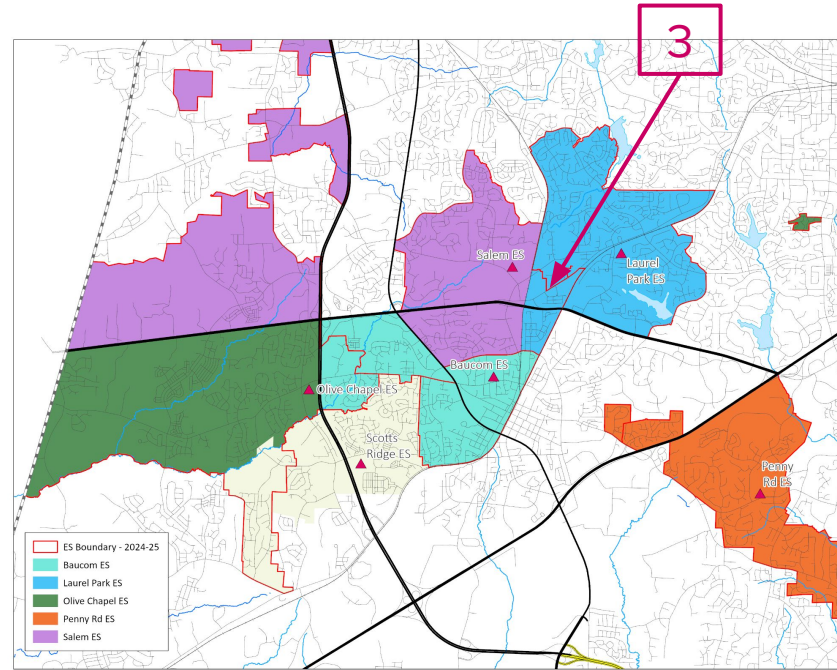
Renovated School - Baucom ES (from Olive Chapel ES & Salem ES)

Existing School - Laurel Park ES & Penny Road ES (from Baucom ES & Salem ES)

Review



Impacted Areas: 



Proposed Base Areas

Renovated School - Baucom ES (from Olive Chapel ES & Salem ES)

Existing School - Laurel Park ES (from Salem ES)

2024-25 Base School	Calendar	Capacity w/ Trailers	2025-26 Projected Utilization w/ Trailers	2026-27 Projected Utilization w/ Trailers
Baucom ES	Traditional	716	91%	91%
Laurel Park ES	Multi-track Year-round	854	79%	77%
Olive Chapel ES	Multi-track Year-round	856	144%	147%
Penny Road ES	Traditional	570	85%	84%
Salem ES	Multi-track Year-round	856	99%	108%

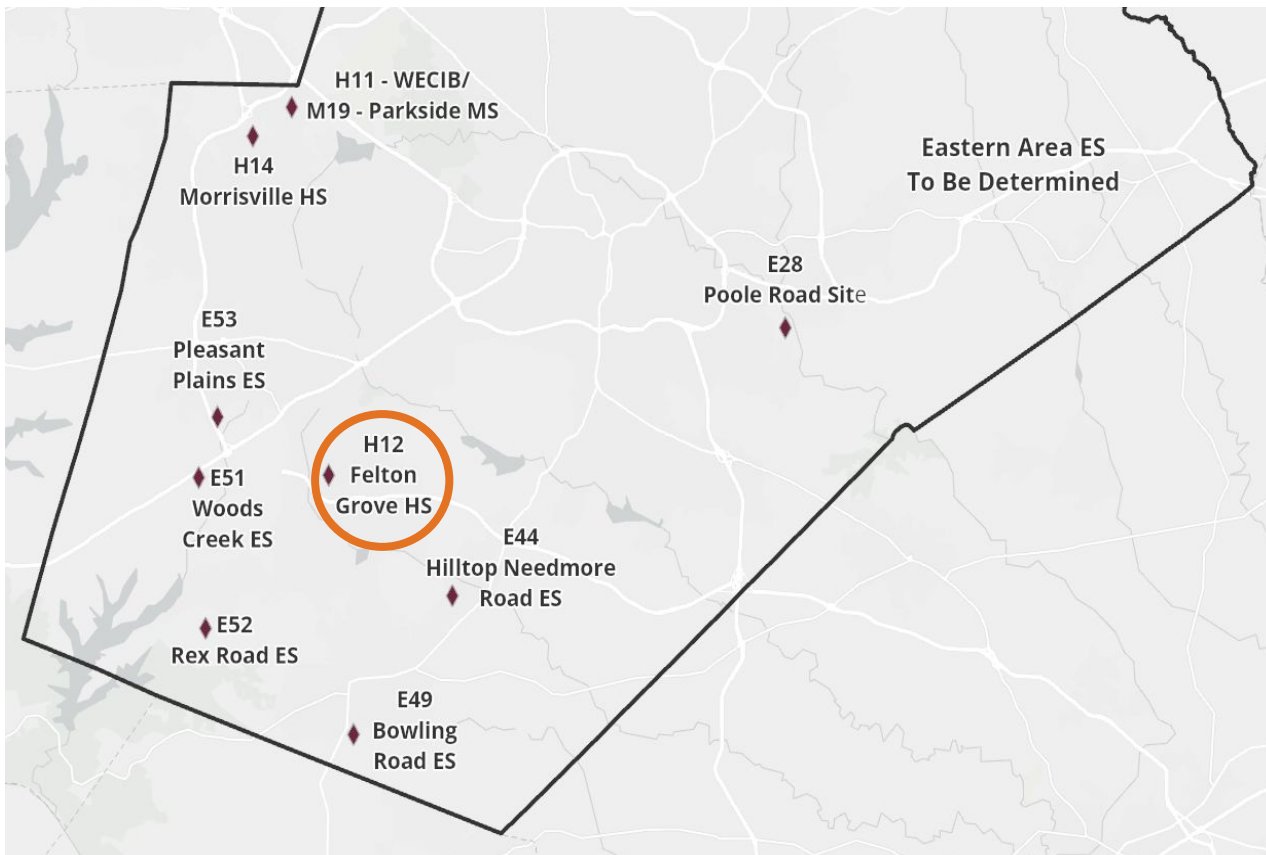
2025-26 Base School	Calendar	Capacity w/ Trailers	2025-26 Projected Utilization w/ Trailers	2026-27 Projected Utilization w/ Trailers
Baucom ES	Traditional	716	112%	112%
Laurel Park ES	Multi-track Year-round	854	89%	87%
Olive Chapel ES	Multi-track Year-round	856	119%*	121%*
Penny Road ES	Traditional	570	90%	89%
Salem ES	Multi-track Year-round	856	77%	85%

*This school's projected crowding reflects the cumulative impact of multiple assignment adjustments.

*Utilization based on building capacity, updated May 2024

**After* Projected Utilization assumes all impacted students will transition to the newly assigned school

Felton Grove High



New School - Felton Grove HS (opening August 2025)

Calendar Recommendation

- Traditional, Capacity = 2200

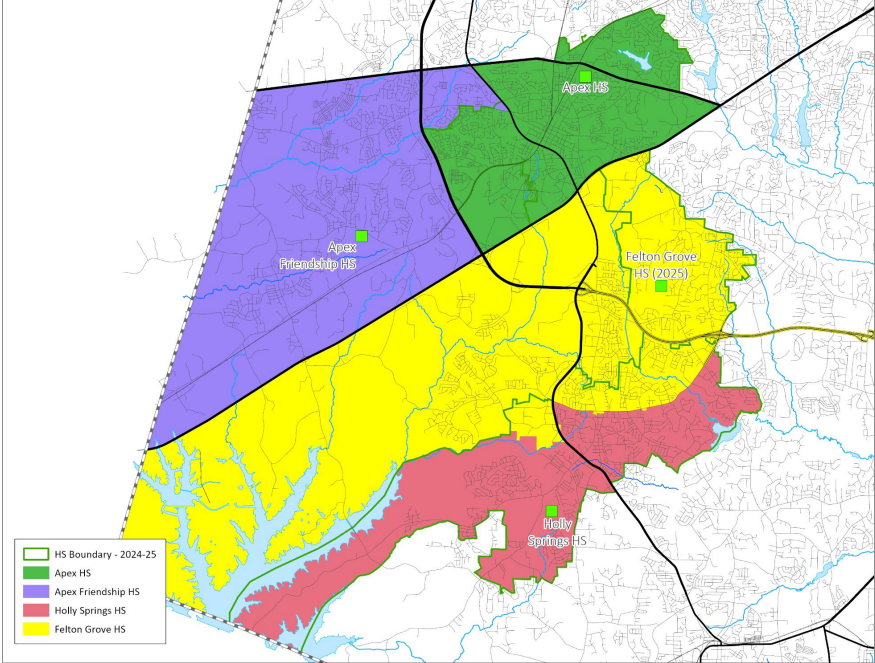
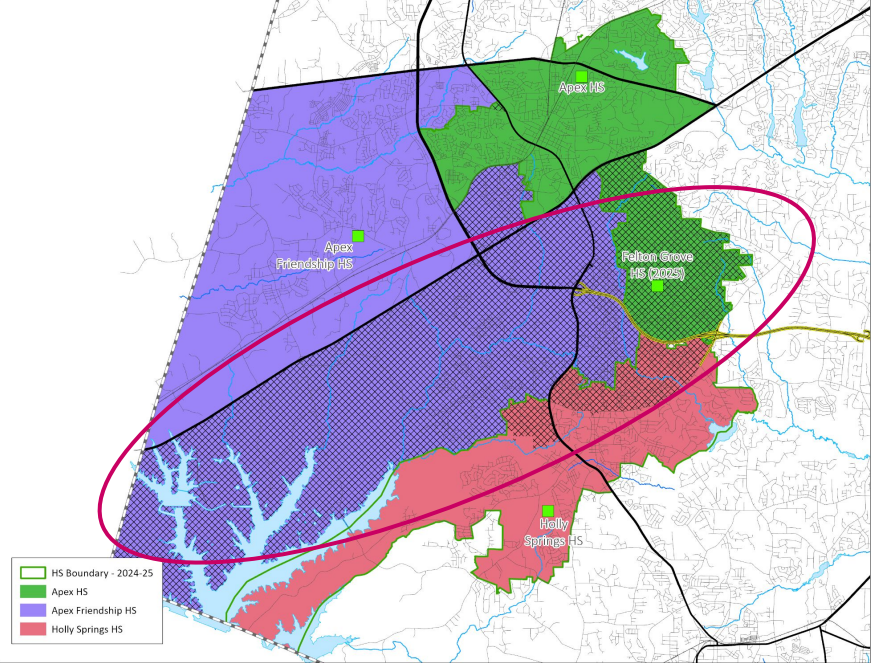
Impacted Schools

- Apex HS, Apex Friendship HS & Holly Springs HS

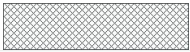
2024-25 Base School	Calendar	Capacity w/ Trailers	2025-26 Projected Utilization w/ Trailers	2026-27 Projected Utilization w/ Trailers
Apex HS	Traditional	2240	108%	102%
Apex Friendship HS	Traditional	2384	119%	126%
Holly Springs HS	Traditional	1992	102%	105%

New School - Felton Grove HS

Review



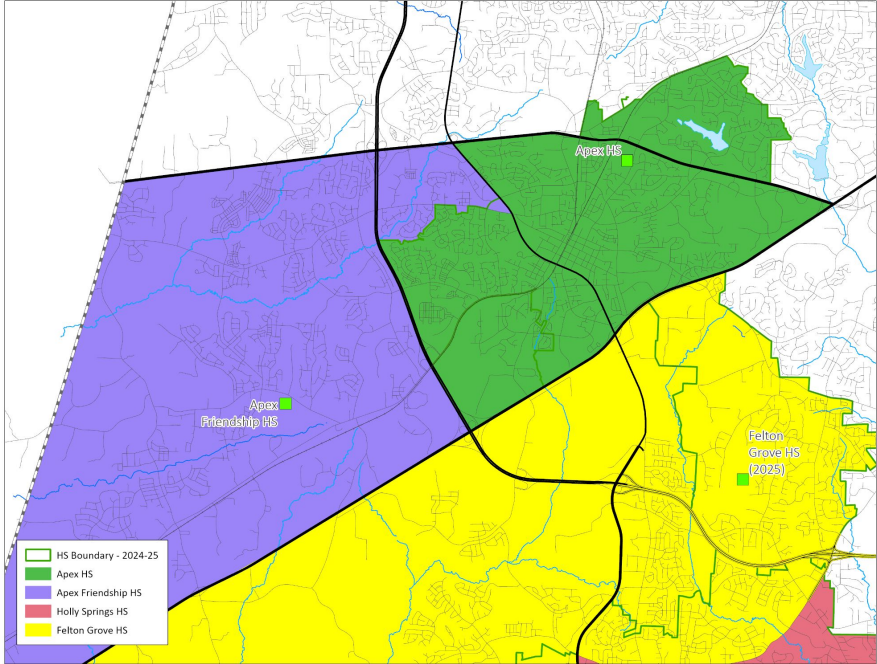
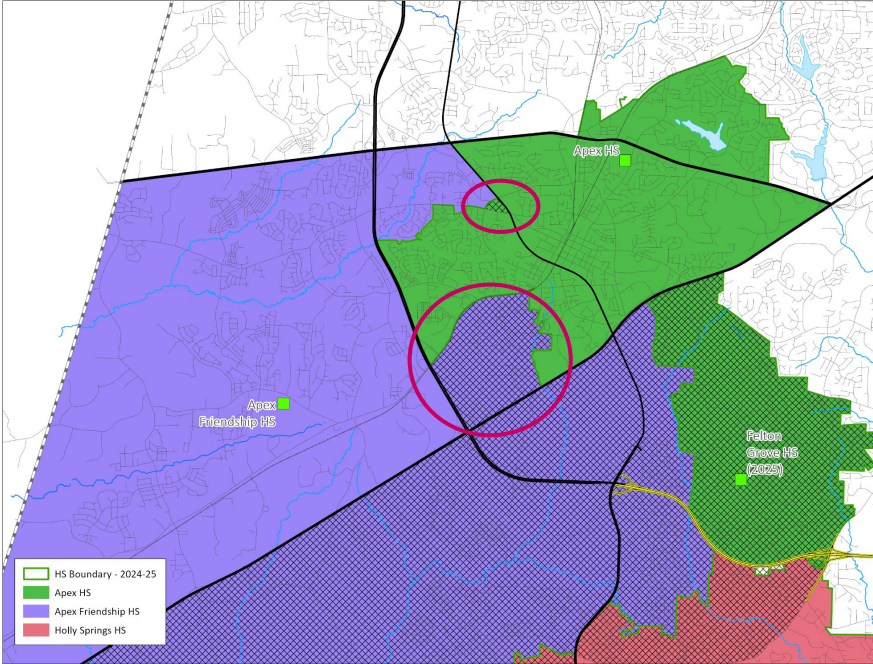
Impacted Areas:



Proposed Base Areas

Existing School - Apex HS (from Apex Friendship H

Review



Impacted Areas:



Proposed Base Areas

New School - Felton Grove HS & Existing School

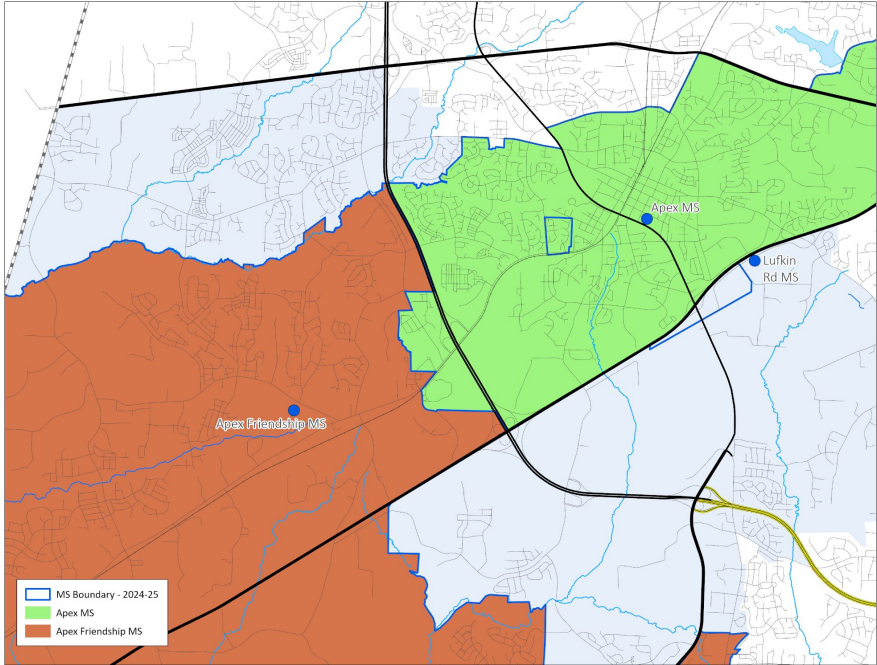
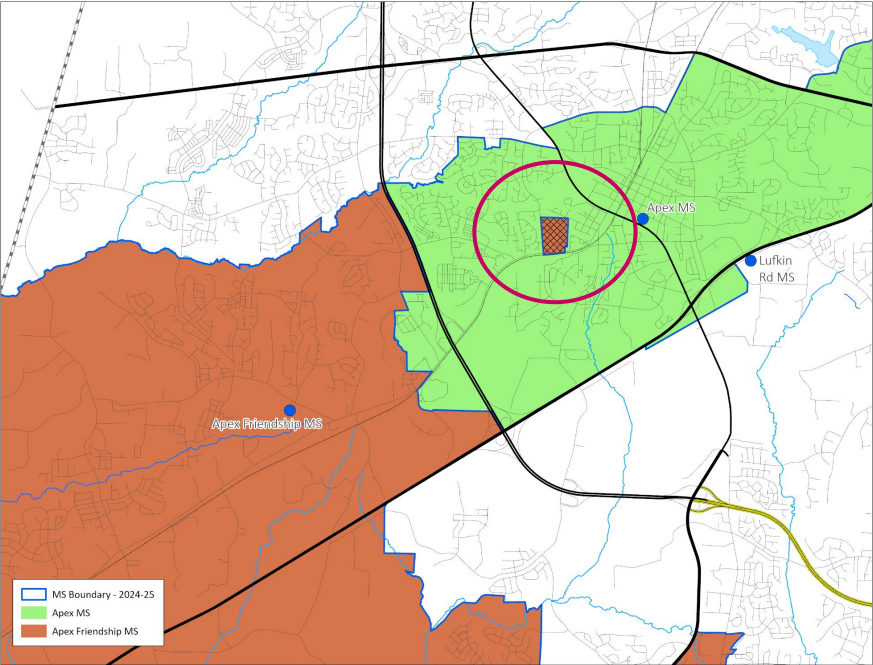
Apex HS (from Apex Friendship HS)

2025-26 Base School	Calendar	Capacity w/ Trailers ²	2025-26 Projected Utilization w/ Trailer ¹	2026-27 Projected Utilization w/ Trailers ¹
Apex HS	Traditional	2240	110%	97%*
Apex Friendship HS	Traditional	2384	91%	88%
Holly Springs HS	Traditional	1992	91%	88%
Felton Grove HS	Traditional	2240	41%	63%

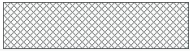
¹The projected capacity for Felton Grove HS reflects full 9th-12th grade enrollment, which will NOT be reached in the first year when only 9th and 10th grades are enrolled. The table shows the expected utilization based on the enrollment of 9th and 10th grade students ONLY at Felton Grove HS for the 2025-26 school year, with the student cohort advancing each year (9th-11th in 2026-27).

Existing School - Apex MS (from Apex Friendship M

Review



Impacted Areas:



Proposed Base Areas

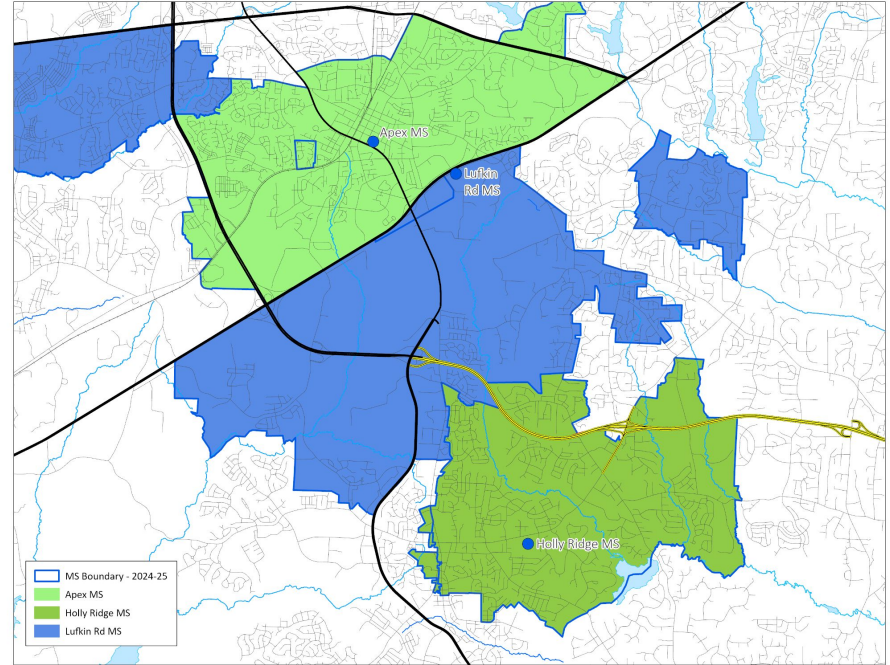
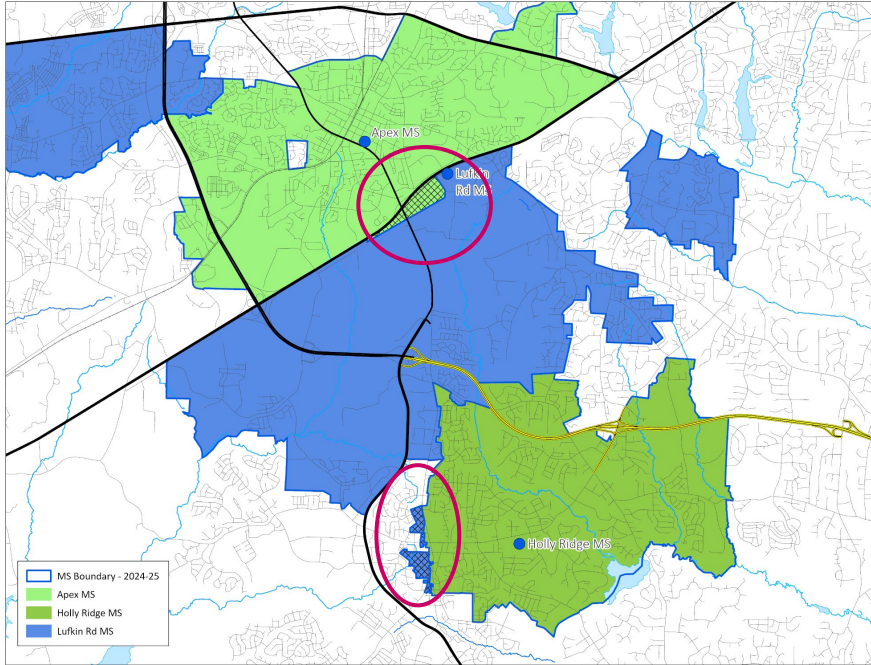
Existing School - Apex MS (from Apex Friendship MS)

2024-25 Base School	Calendar	Capacity w/ Trailers	2025-26 Projected Utilization w/ Trailers	2026-27 Projected Utilization w/ Trailers
Apex MS	Traditional	936	92%	94%
Apex Friendship MS	Traditional	1248	113%	110%

2025-26 Base School	Calendar	Capacity w/ Trailers	2025-26 Projected Utilization w/ Trailers	2026-27 Projected Utilization w/ Trailers
Apex MS	Traditional	936	94%*	95%*
Apex Friendship MS	Traditional	1248	112%	109%

Existing School - Lufkin Road MS (from Apex MS) & Holly Ridge MS (from Lufkin Road MS)

Review



Impacted Areas:



Proposed Base Areas

Existing School - Lufkin Road MS (from Apex MS) & Holly Ridge MS (from Lufkin Road MS)

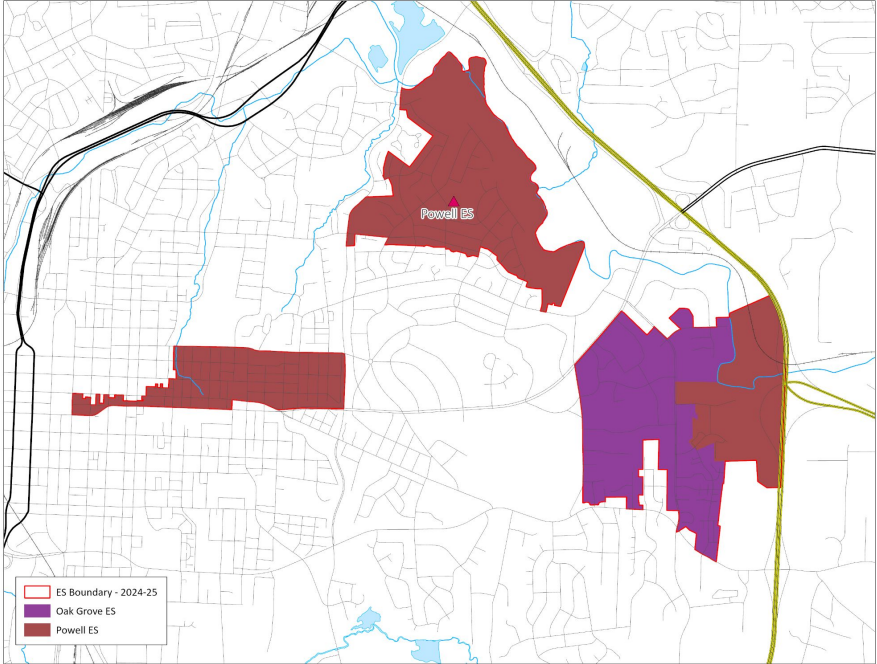
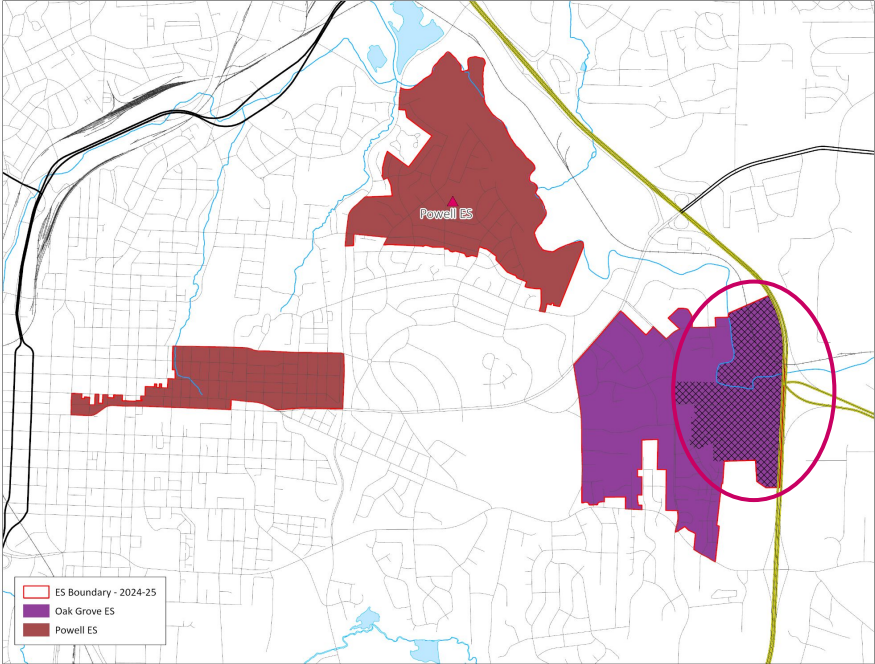
2024-25 Base School	Calendar	Capacity w/ Trailers	2025-26 Projected Utilization w/ Trailers	2026-27 Projected Utilization w/ Trailers
Apex MS	Traditional	936	92%	94%
Holly Ridge MS	Traditional	1222	79%	80%
Lufkin Road MS	Multi-track Year-round	1248	94%	100%

2025-26 Base School	Calendar	Capacity w/ Trailers	2025-26 Projected Utilization w/ Trailers	2026-27 Projected Utilization w/ Trailers
Apex MS	Traditional	936	94%*	95%*
Holly Ridge MS	Traditional	1222	79%	80%
Lufkin Road MS	Multi-track Year-round	1248	95%	100%

Recommendations Addressing School Choice Options

Existing School - Powell Magnet ES (from Oak Grove)

Review



Impacted Areas:



Proposed Base Areas

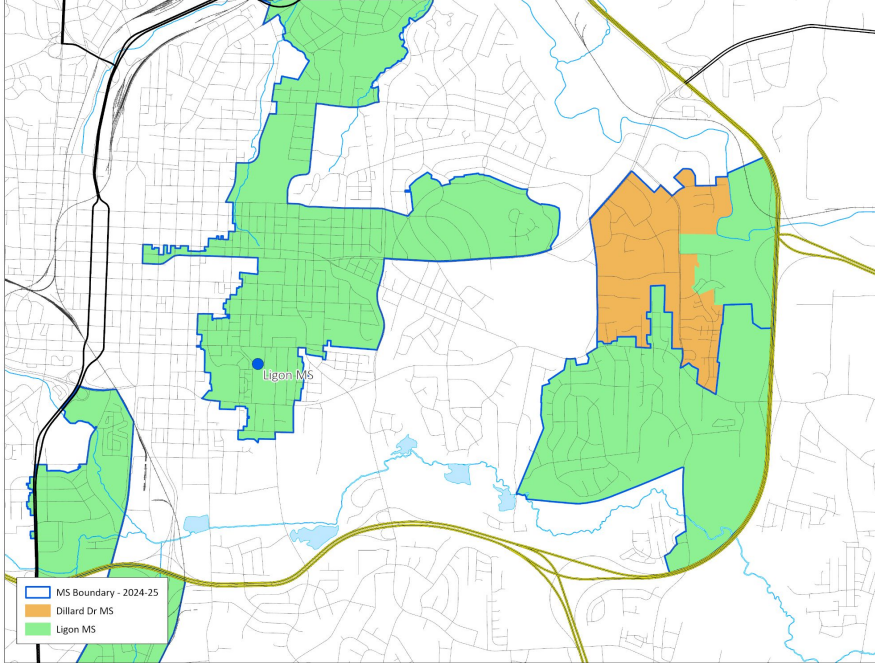
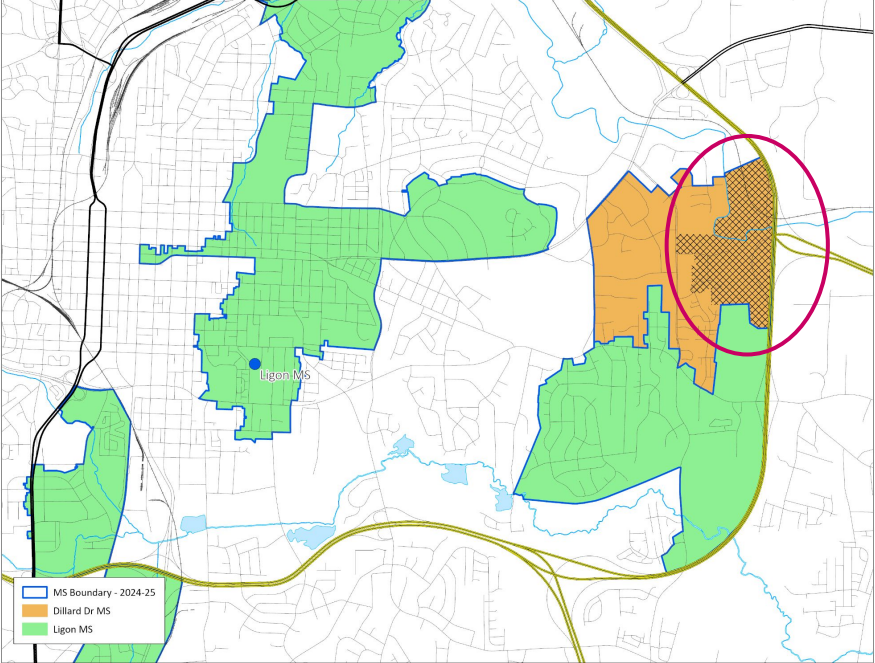
Existing School - Powell Magnet ES (from Oak Grove ES)

2024-25 Base School	Calendar	Capacity w/ Trailers	2025-26 Projected Utilization w/ Trailers	2026-27 Projected Utilization w/ Trailers
Oak Grove ES	Multi-track Year-round	716	78%	79%
Powell Magnet ES	Traditional	308	102%	101%

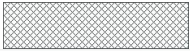
2025-26 Base School	Calendar	Capacity w/ Trailers	2025-26 Projected Utilization w/ Trailers	2026-27 Projected Utilization w/ Trailers
Oak Grove ES	Multi-track Year-round	716	78%	78%
Powell Magnet ES	Traditional	308	104%	103%

Existing School - Ligon Magnet MS (from Dillard Drive Magnet

Review



Impacted Areas:



Proposed Base Areas

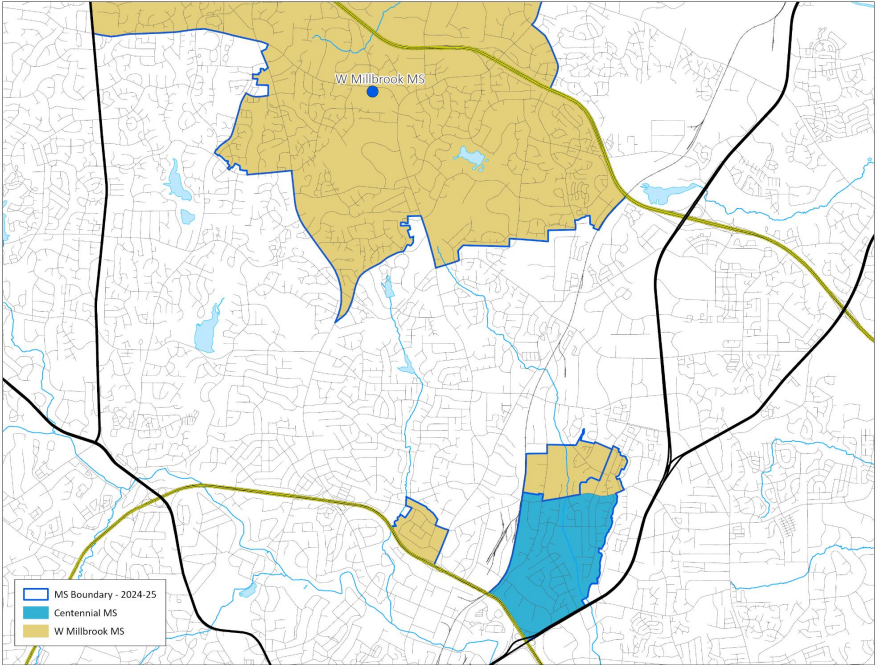
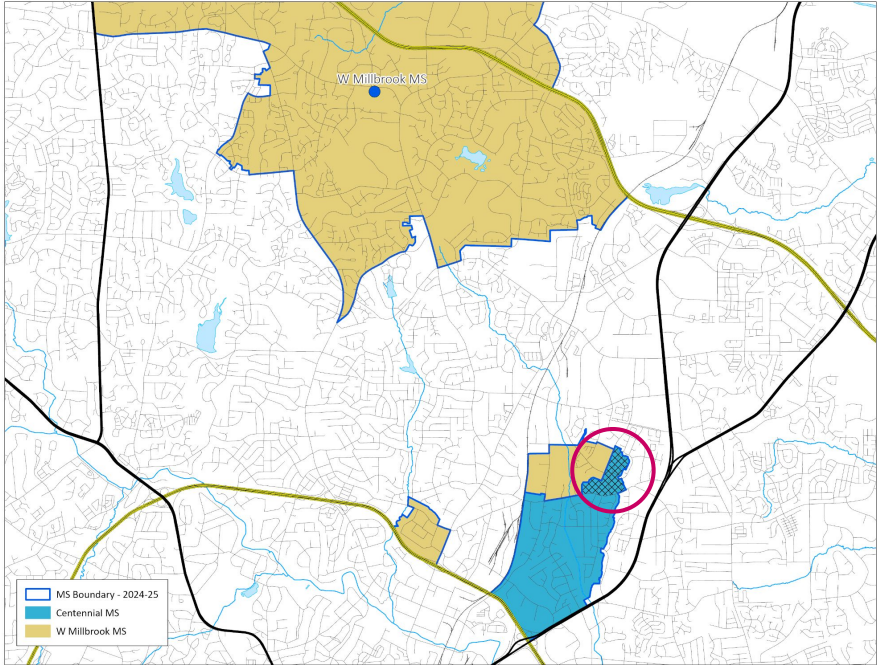
Existing School - Ligon Magnet MS (from Dillard Drive Magnet MS)

2024-25 Base School	Calendar	Capacity w/ Trailers	2025-26 Projected Utilization w/ Trailers	2026-27 Projected Utilization w/ Trailers
Dillard Drive Magnet MS	Traditional	1092	91%	95%
Ligon Magnet MS	Traditional	1014	95%	97%

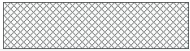
2025-26 Base School	Calendar	Capacity w/ Trailers	2025-26 Projected Utilization w/ Trailers	2026-27 Projected Utilization w/ Trailers
Dillard Drive Magnet MS	Traditional	1092	90%	95%
Ligon Magnet MS	Traditional	1014	95%	97%

Existing School - West Millbrook Magnet MS (from Centennial Magnet)

Review



Impacted Areas:



Proposed Base Areas

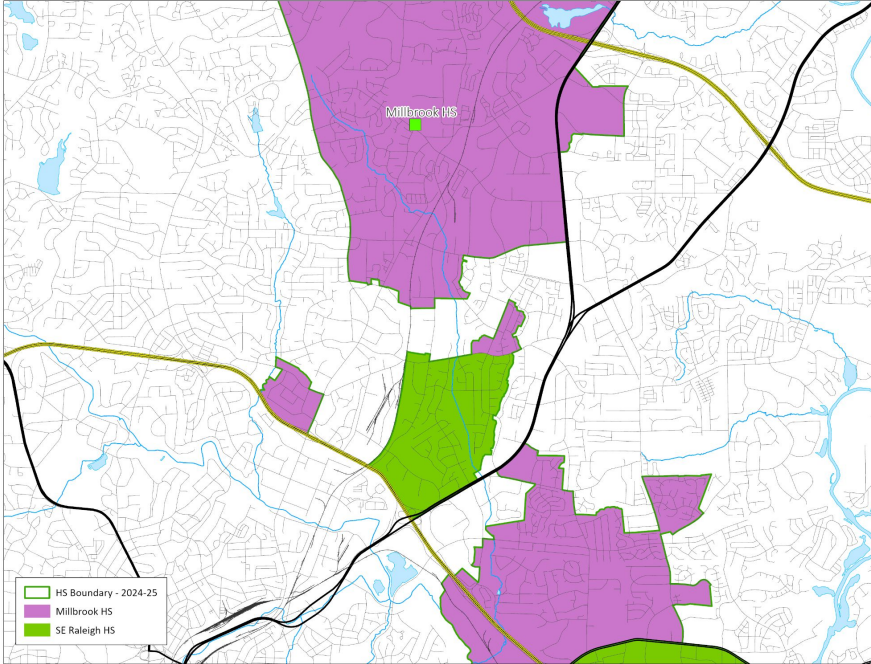
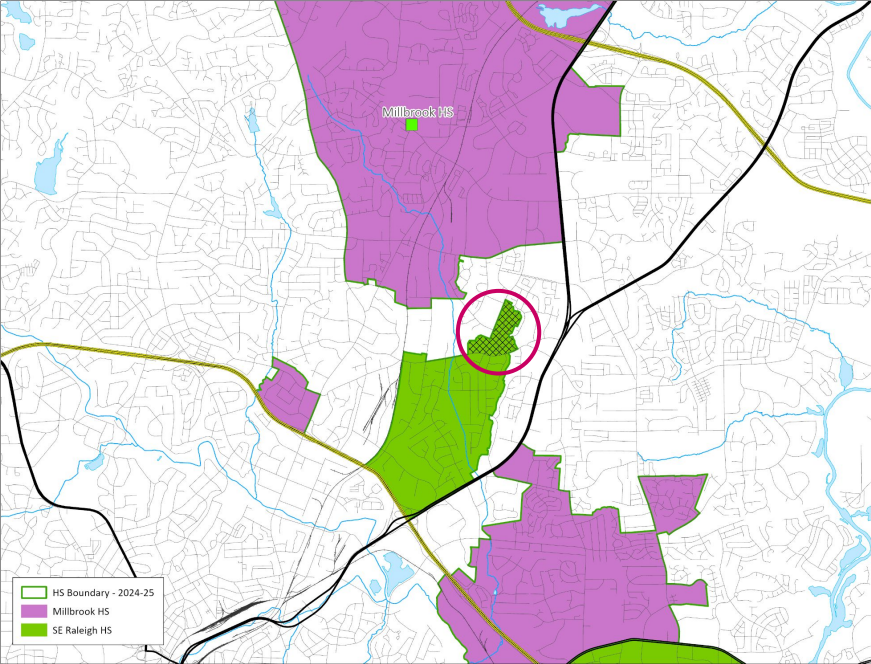
Existing School - West Millbrook Magnet MS (from Centennial Magnet MS)

2024-25 Base School	Calendar	Capacity w/ Trailers	2025 Projected Utilization w/ Trailers	2026-27 Projected Utilization w/ Trailers
Centennial Magnet MS	Modified	624	83%	87%
West Millbrook Magnet MS	Traditional	1248	92%	90%

2025-26 Base School	Calendar	Capacity w/ Trailers	2025-26 Projected Utilization w/ Trailers	2026-27 Projected Utilization w/ Trailers
Centennial Magnet MS	Modified	624	79%	83%
West Millbrook Magnet MS	Traditional	1248	94%	93%

Existing School - Millbrook Magnet HS (from Southeast Raleigh Magne

Review



Impacted Areas:



Proposed Base Areas

Existing School - Millbrook Magnet HS (from Southeast Raleigh Magnet HS)

2024-25 Base School	Calendar	Capacity w/ Trailers	2025-26 Projected Utilization w/ Trailers	2026-27 Projected Utilization w/ Trailers
Millbrook Magnet HS	Traditional	2558	100%	99%
Southeast Raleigh Magnet HS	Modified	1967	79%	79%

2025-26 Base School	Calendar	Capacity w/ Trailers	2025-26 Projected Utilization w/ Trailers	2026-27 Projected Utilization w/ Trailers
Millbrook Magnet HS	Traditional	2558	102%	100%
Southeast Raleigh Magnet HS	Modified	1967	76%	77%

Recommendations for Calendar Application Changes to Support Transportation Efficiency

Elementary Calendar Application Changes

Current Base	Current Calendar Application School(s)	Proposed Base	Proposed Calendar Application School
Apex (T)	Laurel Park (MTYR)	Pleasant Plains (MTYR)	n/a
Baucom (T)	Laurel Park (MTYR)	Penny Road (T)	Oak Grove (MTYR)
Buckhorn Creek (T)	Ballentine (MTYR) & Herbert Akins Road (MTYR)	Bowling Road (MTYR)	n/a
Buckhorn Creek (T)	Holly Springs (MTYR)	Rex Road (MTYR)	n/a
Fuquay Varina (T)	Ballentine (MTYR)	Bowling Road (MTYR)	n/a
Herbert Akins Road (MTYR)	Buckhorn Creek (T)	Buckhorn Creek (T)	n/a
Herbert Akins Road (MTYR)	Buckhorn Creek (T) & Fuquay-Varina (T)	Bowling Road (MTYR)	n/a
Herbert Akins Road (MTYR)	Buckhorn Creek (T) & Fuquay-Varina (T)	Holly Grove (MTYR)	Buckhorn Creek (T)

Elementary Calendar Application Changes *(continued)*

Current Base	Current Calendar Application School(s)	Proposed Base	Proposed Calendar Application School
Holly Grove (MTYR)	Buckhorn Creek (T)	Rex Road (MTYR)	n/a
Holly Ridge (T)	Holly Springs (MTYR)	Herbert Akins Road (MTYR)	n/a
Holly Springs (MTYR)	Holly Ridge (T) & Oakview (T)	Holly Ridge (T)	n/a
Lincoln Heights Magnet (T)	Ballentine (MTYR) & Herbert Akins Road (MTYR)	Bowling Road (MTYR)	n/a
Lincoln Heights Magnet (T)	Herbert Akins Road (MTYR)	Buckhorn Creek (T)	n/a
Oak Grove (MTYR)	Penny Road (T)	Powell Magnet (T)	n/a

Elementary Calendar Application Changes *(continued)*

Current Base	Current Calendar Application School(s)	Proposed Base	Proposed Calendar Application School
Olive Chapel (MTYR)	Baucom (T)	Baucom (T)	n/a
Olive Chapel (MTYR)	Baucom (T)	Scotts Ridge (T)	n/a
Salem (MTYR)	Baucom (T)	Baucom (T)	n/a
Scotts Ridge (T)	Laurel Park (MTYR) & Salem (MTYR)	Pleasant Plains (MTYR)	n/a
South Lakes (T)	Ballentine (MTYR)	Bowling Road (MTYR)	n/a

Middle School Calendar Application Changes

Current Base	Current Calendar Application School(s)	Proposed Base	Proposed Calendar Application School
Centennial Magnet (Mod)	Dillard Drive Magnet (T)	West Millbrook Magnet (T)	n/a
Dillard Drive Magnet (T)	Lufkin Road (MTYR)	Ligon Magnet (T)	n/a
Holly Grove (MTYR)	Holly Ridge (T)	Fuquay-Varina (T)	n/a

Middle School Calendar Application Changes *(continued)*

Current Base	Current Calendar Application School(s)	Proposed Calendar Application School
Carroll Magnet (T)	Pine Hollow (MTYR)*	n/a
Leesville Road (T)	Pine Hollow (MTYR)*	n/a
Lufkin Road (MTYR)**	n/a	Apex (T)
Pine Hollow (MTYR)*	Leesville Road (T)	n/a
River Bend (T)	Rolesville (MTYR)*	n/a
Rolesville (MTYR)*	Wake Forest (T)	n/a
West Millbrook Magnet (T)	Pine Hollow (MTYR)*	n/a

*Pine Hollow Middle and Rolesville Middle will operate on a traditional calendar beginning in the 2025-26 school year.

**ONLY the portion of base that is east of Hwy 540 and is proposed to be assigned to Baucom Elementary in the 2025-26 school year.

Recommendations for Stability Rules for 2025-2026

Opening a New Elementary School (2025-2026)

For students proposed to be assigned from an existing elementary school to one of the NEW elementary schools (**Bowling Road ES, Pleasant Plains ES or Rex Road ES**):

- Current students **rising into 4th or 5th grade** are eligible to remain at their current school with transfer status (no transportation) through the end of 5th grade
 - Rising kindergarten, 1st, 2nd or 3rd grade **siblings** of these students are eligible to join their older sibling with transfer status (no transportation) through the end of 5th grade

Families potentially impacted by changes included in the adopted plan will be contacted as soon as possible with specific information regarding the process for requesting stability transfers

The online stability transfer request portal will be open for eligible students Dec 4 - Dec 18

Opening a New High School (2025-2026)

For students proposed to be assigned from an existing high school to the NEW **Felton Grove High**:

- Current students **rising into 11th or 12th grade** will remain assigned to their current high school (*Felton Grove High will ONLY serve 9th & 10th grade in the first year*)
 - Rising 9th or 10th grade **siblings** of these students are eligible to join their older sibling with transfer status through the end of 12th grade
- Current students **rising into 10th grade** that are actively participating in the **Academy of Information Technology (AOIT)** at Apex High or the **Academy of Engineering (AOE)** program at Apex Friendship High are eligible to remain assigned to their current school with transfer status (no transportation) through the end of 12th grade

Families potentially impacted by changes included in the adopted plan will be contacted as soon as possible with specific information regarding the process for requesting stability transfers

The online stability transfer request portal will be open for eligible students Dec 4 - Dec 18

Other Elementary Assignment Changes (2025-2026)

For students proposed to be assigned from an **existing elementary school to an existing or renovated elementary school (Baucom Elementary)**

- Current students **rising into 1st through 5th grade** are eligible to remain assigned to their current school with transfer status (no transportation) through the end of 5th grade
 - Rising **kindergarten siblings** of these students are eligible to join their older siblings with transfer status (no transportation) through the end of 5th grade

Families potentially impacted by changes included in the adopted plan will be contacted as soon as possible with specific information regarding the process for requesting stability transfers

The online stability transfer request portal will be open for eligible students Dec 4 - Dec 18

Other Middle School Assignment Changes (2025-2026)

For students proposed to be assigned from an **existing middle school to an existing school or school with a new location (Fuquay-Varina Middle)**

- Current students **rising into 7th or 8th grade** are eligible to remain assigned to their current school with transfer status (no transportation) through the end of 8th grade
 - Rising **6th grade siblings** of these students are eligible to join their older siblings with transfer status (no transportation) through the end of 8th grade

Families potentially impacted by changes included in the adopted plan will be contacted as soon as possible with specific information regarding the process for requesting stability transfers

The online stability transfer request portal will be open for eligible students Dec 4 - Dec 18

Other High School Assignment Changes (2025-2026)

For students proposed to be assigned from an **existing high school to an existing high school**

- Current students **rising into 10th through 12th grade** are eligible to remain assigned to their current school with transfer status (no transportation) through the end of 12th grade
 - Rising **9th grade siblings** of these students are eligible to join their older siblings with transfer status (no transportation) through the end of 12th grade

Families potentially impacted by changes included in the adopted plan will be contacted as soon as possible with specific information regarding the process for requesting stability transfers

The online stability transfer request portal will be open for eligible students Dec 4 - Dec 18

The district website will be updated once the final plan is approved by the Board.

For more information and resources, visit:

www.wcpss.net/enroll

Timeline & Next Steps

Planning Timeline

March 5, 2024 - Public Engagement Plan for the 2025-2026 WCPSS Enrollment Plan [BoE Work Session]

May 7, 2024 - Initial Planning Discussion [BoE Work Session]

- May-June - Staff continues outreach (website updates, focus groups, etc.)
- May-June - Staff works on developing Initial Draft of 2025-2026 Enrollment Plan

June 18, 2024 - Update on Progress of Public Engagement Plan [BoE Work Session]

- June-September - Staff continues work on developing Initial Draft of 2025-2026 Enrollment Plan

September 3, 2024 - Presentation of Initial Draft of 2025-2026 Enrollment Plan [BoE Work Session]

- September-October - Staff hosts public engagement activities (in person and virtual)
- October - Staff prepares summary of feedback received and any recommended revisions

October 15, 2024 - Review Feedback Received on Initial Draft [BoE Work Session]

- October - Staff hosts final public engagement session(s) (virtual)

November 12, 2024 - Public Hearing [BoE Meeting]

November 26, 2024 - Presentation of Final Draft of 2025-2026 Enrollment Plan for Review [BoE Work Session]

November 26, 2024 - Presentation of Final Plan for Approval [BoE Meeting]

Next Steps for Impacted Families

Following approval of the 2025-2026 School Enrollment Plan

- General message sent to **all** WCPSS families notifying them of the approved plan
- Specific message sent to families **directly impacted** by the approved changes (instructions for stability transfer process included for eligible students)
- **Stability Transfer application available December 4-18***
- Principals with impacted students receive information to help them support families
- Assignment notifications* sent to families the week of December 16

**due to printing deadlines, printed assignment notifications will NOT reflect the results of stability transfer requests*

Next Steps for District Processes

- **October 12, 2024** - Early College Fair
- **October 14, 2024** - Pre-enrollment opens for 2025-2026
 - Magnet/ Year-round application opens
 - Early College application opens
- **October 26, 2024** - Magnet and Early College Fair
- **Late November, 2024** - Mid-Year callbacks for capped schools impacted by reassignment
- **December 4 - 18, 2024 - Stability Transfer application period**
- **December 12** - Early College application closes
- **Week of December 16** - Distribution of Initial Assignment Notifications for all students
- **January 23, 2025** - Magnet/ Year-round application closes
- **February 21, 2025** - Early College, Magnet & Year-round results posted
- **February 24 - 28, 2025** - Magnet Welcome Week
- **March 3 - 14, 2025** - Official Request for Transfer application period

Questions?

Feedback, Thoughts & Ideas...

Addendum

Board Policy 4150, Prior Presentations, Detailed Maps, Public Engagement Summary

Board Policy 4150: Section A

A. Drawing of School Attendance Areas

The superintendent shall recommend to the Board of Education school assignment areas for the schools in the system. The Board will review the Superintendent's recommendation and make adjustments when needed. Assignment area boundaries shall be shown on maps approved by the Board and open to public inspection.

The Board shall complete any review of the assignment areas by January 1. Any proposed changes in the school assignment areas after January 1 shall require notice, a waiver of this policy provision, and a public hearing. Notification of assignment for students for the coming school year shall be made and distributed prior to April 1.

1. The assignment areas will be developed by balancing, to the extent reasonable, the goals and factors set forth below and will include target ranges, where appropriate, to accomplish these goals and factors:

a. Student Achievement

To the extent practicable, student populations at each school will provide an optimal opportunity for academic success for all students.

Factors for consideration include:

- 1) providing an opportunity for families to apply to designated application schools;
- 2) minimizing high concentrations of low-performing students at each school; and
- 3) minimizing high concentrations of students from low income families at each school.

Board Policy 4150: Section A (continued)

b. Stability

To the extent practicable, a student who is reassigned will be provided an opportunity to stay at the current school for one additional year if it is the terminal grade for an elementary or middle school (grades 5 and 8), and the student's siblings will be provided an opportunity to attend the same school for the one year period. The student and siblings must apply for these transfers at the designated time.

To the extent practicable, any student currently in high school who is reassigned from an existing school to an existing school will be provided an opportunity to stay at the current school until the terminal grade (grade 12). The student must apply for this transfer at the designated time.

Additional opportunities to remain at the current school, including for siblings, may be included in the annual student enrollment plan.

A change in domicile does not preserve the previous school assignment. However, Early College and Magnet application assignments are valid through the terminal grade of the school.

c. Proximity

To the extent practicable, base school assignments will be within a reasonable distance of the student's home. Factors for consideration include:

- 1) allowing students living within the immediate vicinity of a school, defined by the assignment plan, to attend that school; and
- 2) minimizing splitting of neighborhoods when developing base attendance areas.

d. Operational Efficiency

To the extent practicable, assignments will optimize the use of school facilities and transportation resources. Factors for consideration include:

- 1) minimizing under-enrolled schools;
- 2) minimizing overcrowded schools; and
- 3) maximizing transportation efficiencies.

Prior Presentations Included in the Agenda Attachments

Public Engagement Summary for WCPSS 2025-2026 School Enrollment Plan (pdf file)

- Original presentation as shared during the Board Work Session on November 12, 2024

Feedback Review (Revised Draft) of WCPSS 2025-2026 School Enrollment Plan (pdf file)

- Original presentation as shared during the Board Work Session on October 15, 2024

Initial Draft of WCPSS 2025-2026 School Enrollment Plan (pdf file)

- Original presentation as shared during the Board Work Session on September 3, 2024

Detailed Maps Included in the Agenda Attachments

UPDATED Detailed maps in pdf format showing the proposed base areas for all schools included in the FINAL draft of the WCPSS 2025-2026 School Enrollment Plan

- Additional information, including descriptions of the recommended changes and links to an online address look-up tool are on our district website at www.wcpss.net/2025enrollmentproposal

Public Engagement Summary Included in the Agenda Attachments

Version 1.1 of this report was updated, to include information from the recent Public Hearing for the enrollment plant.

- The report provides an overview of community feedback gathered from various public engagement activities held in support of the development of the 2025-2026 School Enrollment Plan.