



Return to In-Person Instruction

WCPSS Board of Education

January 5, 2021



ABC Science Collaborative

Dr. Kanecia Zimmerman

Wake County Public School System Board Meeting

*Uniting science and schools for a data-driven solution to decision
making and implementation*

January 5, 2021



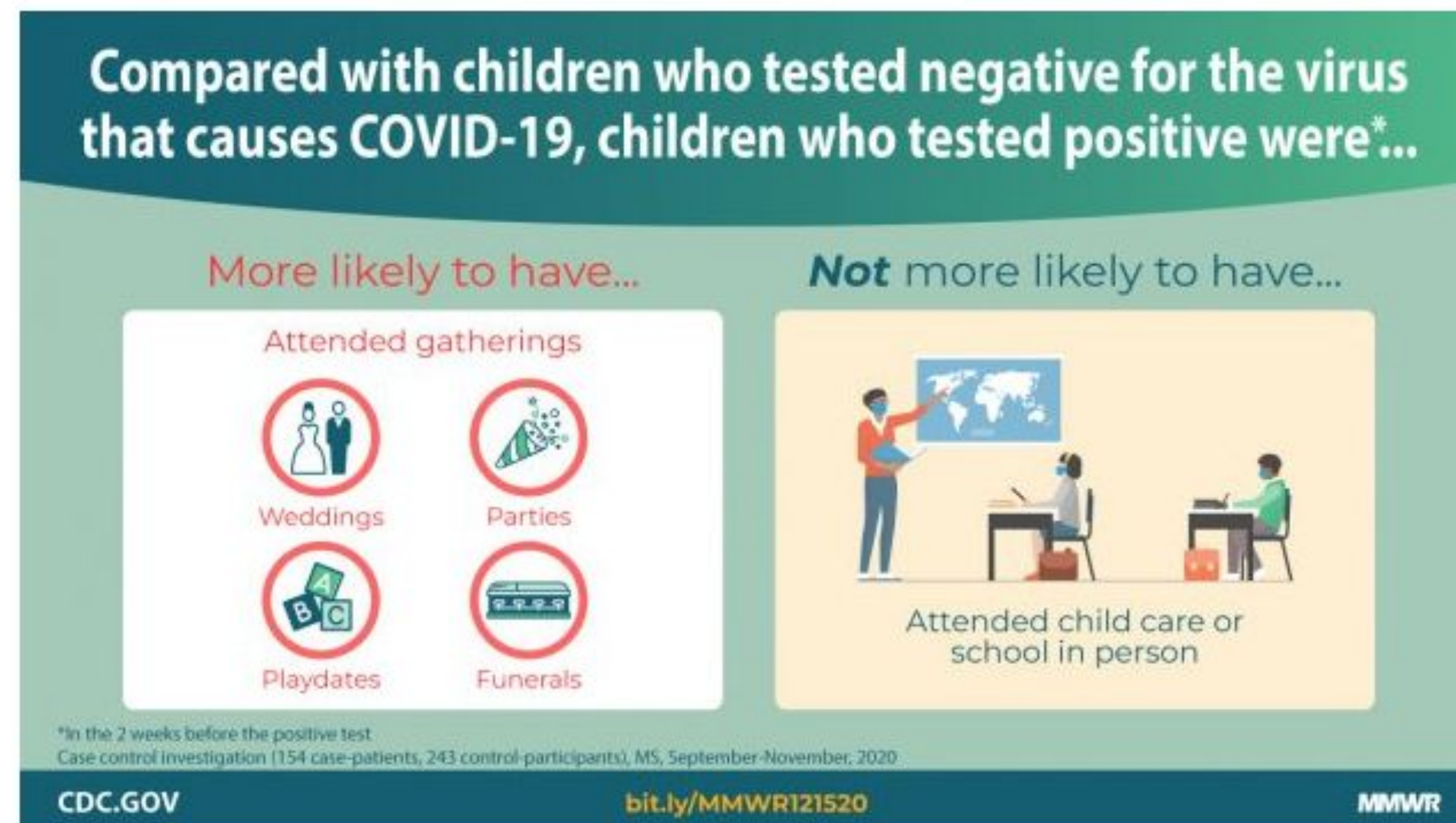
THE ABC SCIENCE
COLLABORATIVE

Learning | Informed Decision-Making | Research

The information presented here is the most up-to-date, data-driven and evidence-based science to help school districts make important decisions regarding face-to-face instruction. Duke University and its partners will not make decisions nor will they advise specific action.

Case control study to evaluate transmission: Mississippi

- <18 years who received COVID-19 testing (September 1–November 5, 2020)
- 397 participants: 154 positive; 243 negative



<https://www.cdc.gov/mmwr/volumes/69/wr/mm6950e3.htm>

Transmission in Educational Settings: England

THE LANCET
Infectious Diseases

Published: December 08, 2020

SARS-CoV-2 infection and transmission in educational settings: a prospective, cross-sectional analysis of infection clusters and outbreaks in England

Sharif A Ismail, Vanessa Saliba, Jamie Lopez Bernal, Mary E Ramsay, Shamez N Ladhani

- Daily school openings
 - ~38, 000 early years settings (<5 year olds)
 - ~15 600 primary schools (5-11 year olds)
 - ~4000 secondary schools (11-18 year olds)
- median daily attendance of 928,000 students (630,000–1,230,000)
- Community rates: 3.8-5.6 cases/100K (children); 8-16 cases/100K (adults) throughout time period
- Mitigation: distinct social bubbles, physical distancing (3ft according to WHO), and frequent handwashing. **NO UNIVERSAL MASKING REQUIREMENT**

Transmission in Educational Settings: England

THE LANCET
Infectious Diseases

Published: December 08, 2020

SARS-CoV-2 infection and transmission in educational settings: a prospective, cross-sectional analysis of infection clusters and outbreaks in England

Sharif A Ismail, Vanessa Saliba, Jamie Lopez Bernal, Mary E Ramsay, Shamez N Ladhani

- 113 single cases of SARS-CoV-2 infection, 9 coprimary cases, and 55 outbreaks.
- Probable direction of transmission: staff to staff in 26 outbreaks, staff to student in 8 outbreaks, student to staff in 16 outbreaks, and student to student in 5 outbreaks.
- Staff had higher incidence than students.
- SARS-CoV-2 infections and outbreaks were uncommon in educational settings during the summer half-term in England.

Schools in England: January 2021

- Rising community cases
- School closures – initially designed to put protocols in place to improve school safety
- New considerations for universal masking (age ≥ 7 years), smaller “bubbles”
- Full lockdown: January 4, 2021

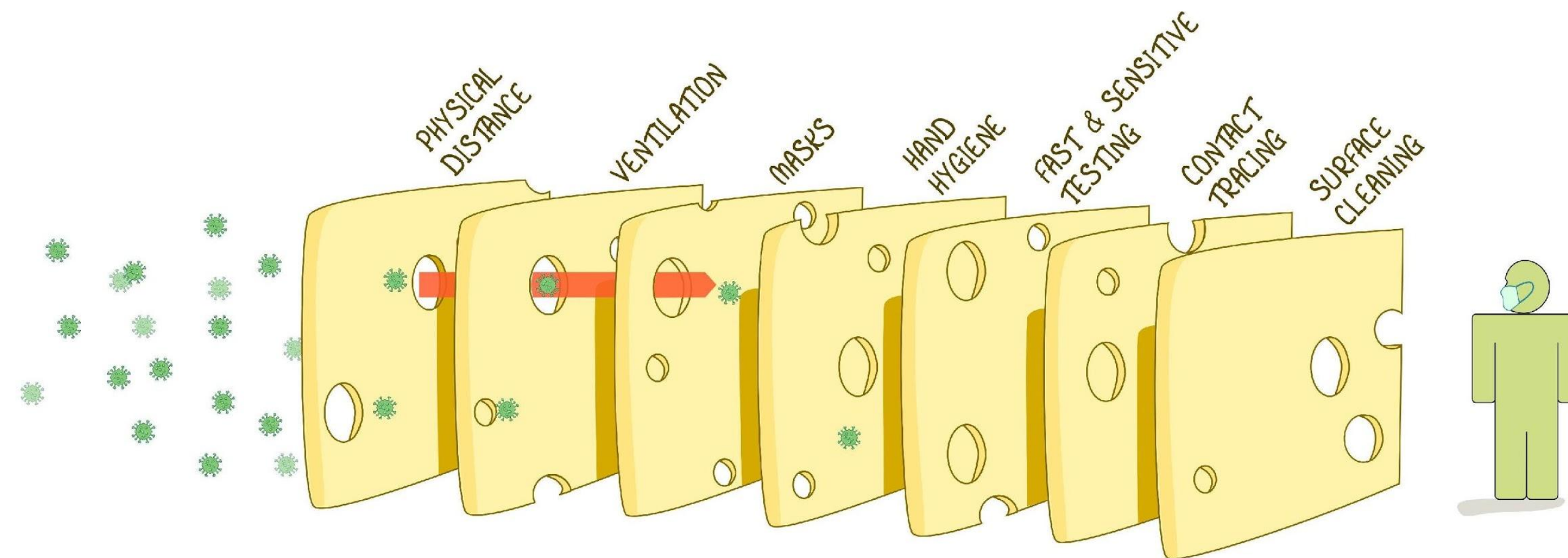
Effectiveness of mitigation strategies

- Factors independently associated with decreased risk for COVID-19
 - distance of >1 m (~3 ft) from a COVID-19 patient (adjusted odds ratio [aOR] 0.15; 95% CI 0.04–0.63);
 - duration of contact <15 minutes (aOR 0.24; 95% CI 0.07–0.90);
 - handwashing often (aOR 0.33; 95% CI 0.13–0.87);
 - wearing a mask all the time during contact with a COVID-19 patient (aOR 0.23; 95% CI 0.09–0.60)

Limitations of some existing data: evaluating mitigation strategies in isolation

THE SWISS CHEESE RESPIRATORY VIRUS DEFENCE

RECOGNISING THAT NO SINGLE INTERVENTION IS PERFECT AT PREVENTING SPREAD



EACH INTERVENTION (LAYER) HAS IMPERFECTIONS (HOLES).
MULTIPLE LAYERS IMPROVE SUCCESS.

IAN M MACKAY
VIOLOGYDOWNUNDER.COM
DERIVED FROM @SKETCHPLANATOR
BASED ON THE SWISS CHEESE MODEL OF ACCIDENT CAUSATION, BY JAMES T REASON, 1990
VERSION 1.3
UPDATE: 12OCT2020

Data from NC schools

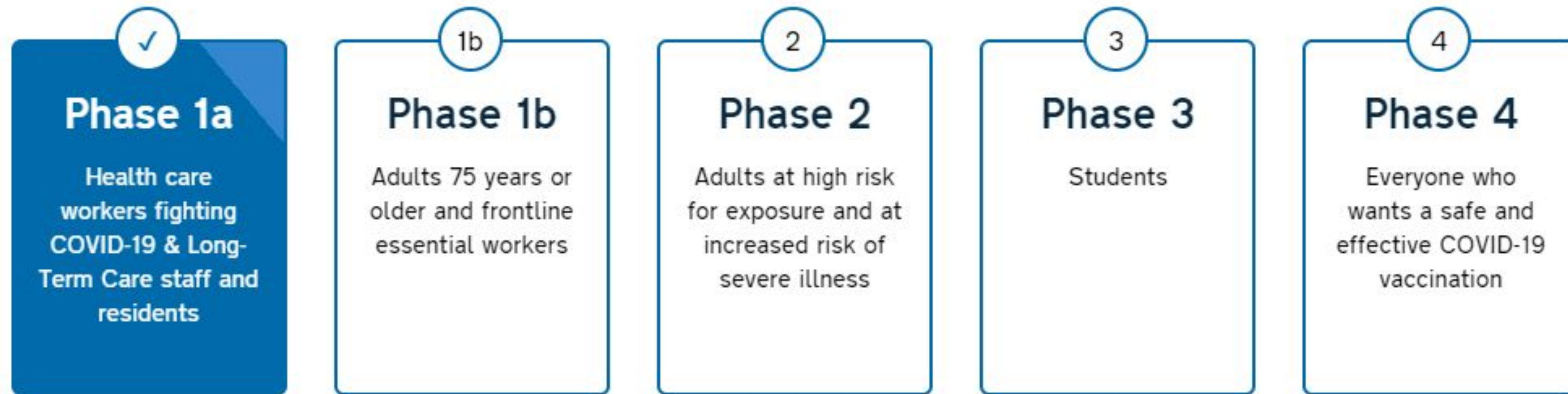
- **Plan B**

- 11 districts
- >90,000 staff and students
- 773 community-acquired SARS-CoV-2 infections were documented by molecular testing
- 32 additional infections were acquired within schools (cases of secondary transmission)
- No instances of child-to-adult transmission of SARS-CoV-2

- **Plan A**

- 6 districts
- > 40,000 staff and students
- Early October-Christmas break
- 14 additional infections within schools (cases of secondary transmission)
- Evidence of pandemic fatigue (masks)

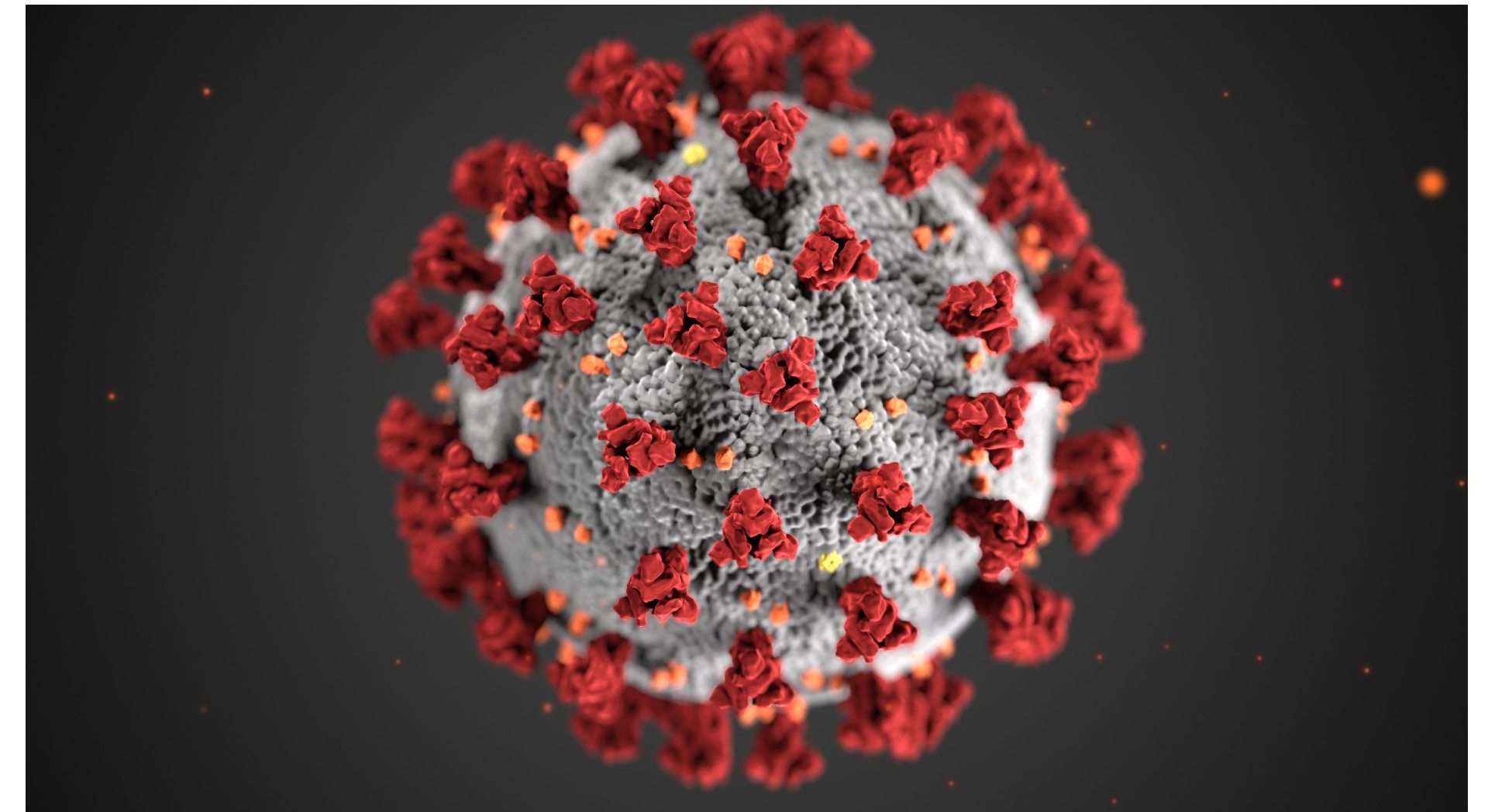
COVID vaccination



- Education sector included in Phase 1b
 - Group 1: Anyone ≥ 75 years
 - Group 2: Health care workers and frontline essential workers ≥ 50 years
 - Group 3: Health care workers and frontline essential workers of any age

Should you be worried about new variants?

- Variants for mRNA viruses are common (mutations during replication)
- Recently described variants in UK (B.1.1.7 lineage) and South Africa (B.1.352) with many mutations
- Concerns for increased spread and false negative results
- **No change to clinical disease**
- Masks, distancing and routine cleaning still work at preventing variants
- Vaccines work against variants



Thank you.



THE ABC SCIENCE
COLLABORATIVE

Learning | Informed Decision-Making | Research

Dialogue and Questions



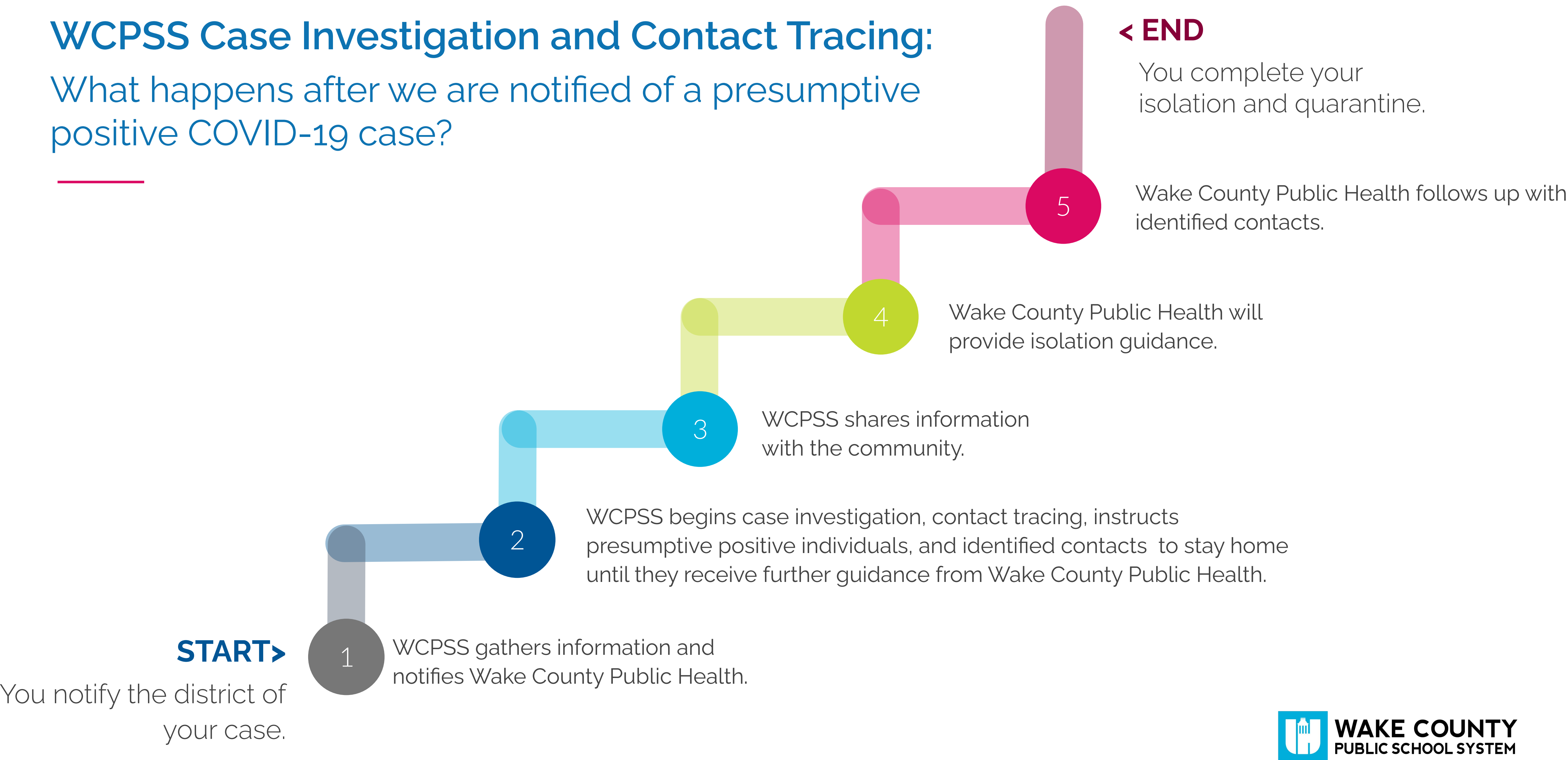
Determining COVID-19 Impact on Classrooms, Grade Levels, and Schools

Paul Koh, Assistant Superintendent, Student Support Services

Kelly Creech, Director, Health Services

WCPSS Case Investigation and Contact Tracing:

What happens after we are notified of a presumptive positive COVID-19 case?



When would a classroom, grade level, or school close?

Wake County Public Health

Considerations: health of staff, students, families, and spread of COVID-19

- WCPSS Health Services notifies Wake County Public Health of presumptive positive case(s)
- Wake County Public Health determines there is need for entire class (both staff and students) to quarantine - classroom is closed
- Wake County Public Health determines there is community spread at the grade level - grade level is closed
- Wake County Public Health determines there is community spread across the school - the whole school is closed

WCPSS

Considerations: number of staff who are out, availability of coverage from substitutes and school staff, impact to the individual school

- Principal notifies Area Supt about staffing issues related to COVID-19
- Area Supt notifies Chief of Schools
- Chief of Schools connects with Chief of Academic Advancement
- Make determination with staffing information to close at the classroom, grade level, or the whole school is closed



Staffing and Substitute Recruitment Update

AJ Muttillo, Assistant Superintendent, Human Resources

Daily Staffing Indicators: December 7 - 18, 2020

TEACHER/IA
ABSENCES

REASSIGNED STAFF

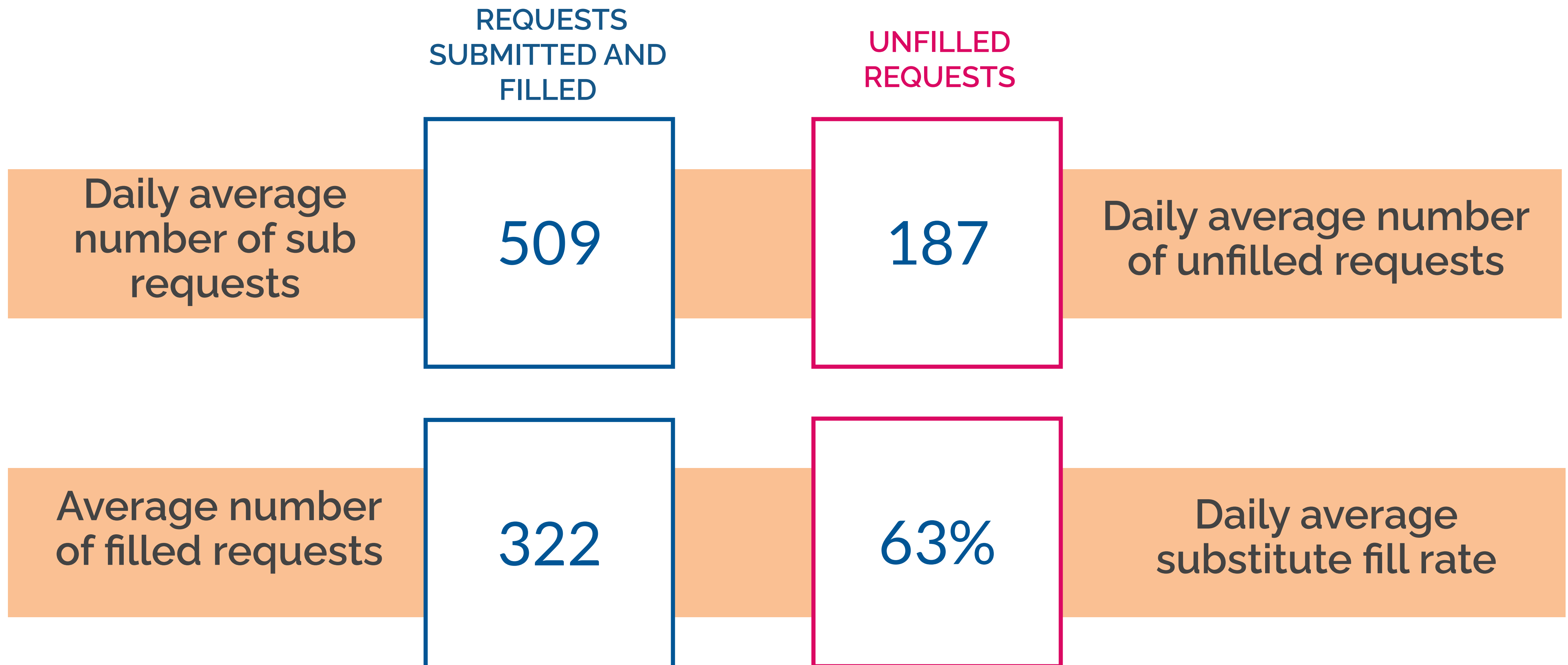
Daily average
number of
teachers/IAs
not reporting

825

356

Daily average
for number of
staff members
reassigned to
cover absences

Daily Substitute Availability: December 7 - 18, 2020



Substitute Feedback

958

As students return to the classroom beginning 2nd semester, I am available and willing to substitute beginning January 20.

506

I am **not** currently picking up substitute jobs.

457

I will begin picking up substitute jobs again once I get the vaccine.

443

I am currently picking up substitute jobs and will continue to do so.

Recruitment Strategies

- Substitute recruitment advertising
- Virtual information sessions
- Additional outreach to key groups
- Temporary Substitute Incentive Pay



**WE NEED YOU.
THEY NEED YOU.**

Be a substitute teacher.

Whether it's for a year or a semester, you're the kind of substitute teacher we need to help keep education on track and bright futures in view. Enjoy flexible work hours, bi-weekly pay and the chance to build a new career. Best of all, no previous teaching experience is required to make a world of difference for yourself and our students.


**WAKE COUNTY
PUBLIC SCHOOL SYSTEM**

Apply online or attend a virtual information session.

Learn more at wcpss.net/subs



**WE NEED YOU.
THEY NEED YOU.**

Be a substitute teacher.

Whether it's for a year or a semester, you're the kind of substitute teacher we need to help keep education on track and bright futures in view. Enjoy flexible work hours, bi-weekly pay and the chance to build a new career. Best of all, no previous teaching experience is required to make a world of difference for yourself and our students.


**WAKE COUNTY
PUBLIC SCHOOL SYSTEM**

Apply online or attend a virtual information session.

Learn more at wcpss.net/subs

Additional Strategies for Support



- Continued monitoring of data with targeted support for schools with greatest needs
- Second Semester Substitutes for each school
- NC Ed Corps Instructional Support Specialists
- Continued support from Central Services volunteers



Middle and High School Athletics

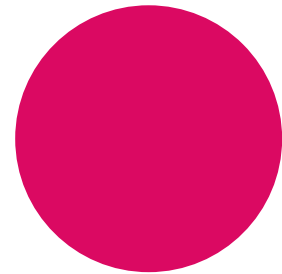
Deran Coe, Director, Athletics

Eric Fitts, Senior Director, Middle School Programs



Middle and High School Athletics

High School



Calendar

- Season schedules
- Optional workouts

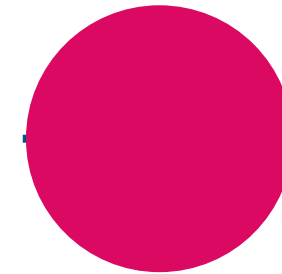
Successes

- Cross Country
- Volleyball
- Swim

Challenges

- Positive cases
- Contact tracing
- Cancelling practices/contests

Middle School



Considerations

- Social-Emotional benefits
- Equitable access

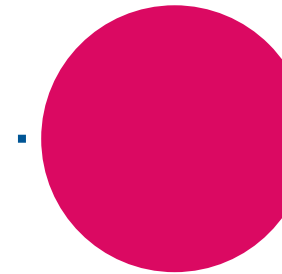
Process for review/feedback

- Focus groups and surveys

Tentative plans for Spring 2021

- Workouts and possible intramural activities within cohorts

Health and Safety Guidelines and Protocols



Health/Safety Guidelines and Protocols

- Daily screenings
- Face coverings at all times
- Social distancing when possible
- Limited spectators



Opening Second Semester

Cathy Moore, Superintendent



Return to In-Person Instruction: Second Semester

K-12 Regional Programs	Daily in-person
PreK - 3	Daily in-person
Grades 4-5	Daily in-person
Grades 6-8	Three-week rotation
Grades 9-12	Three-week rotation

Drivers

- New and/or Additional Executive Orders from the Governor
- Collaboration with and learnings from state/local health officials and the ABC Science Collaborative
- Monitoring implementation of our district's current plan and programming

Reminder: Continue to practice and actively promote the 3 Ws *in all spaces - when in the community and when in school*



Wear.

Wear a cloth facing covering if you will be with other people



Wait.

Wait 6 feet apart. Avoid close contact. (Social distancing)



Wash.

Wash your hands often with soap and water for at least 20 seconds or use hand sanitizer.

Dialogue and Questions

WHAT   
STARTS
 HERE
CHANGES
 EVERYTHING.